

22nd Annual Leukemia Cup Regatta

Eastport Yacht Club and Annapolis Yacht Club

Saturday, May 31, 2014



GENERAL SAILING INSTRUCTIONS

FLEETS A, B & C

Published 24 May 2014

1 RULES

- 1.1 The regatta will be governed by the rules as defined in the current Racing Rules of Sailing (RRS). In the event of any conflict between the; NoR, General Sailing Instructions and Attachments the precedence shall be reverse order of this listing. This changes RRS 63.7.

2 NOTICES TO COMPETITORS

- 2.1 Notices to competitors will be posted on the official notice boards located on the waterside of the Eastport Yacht Club (EYC) and on the lower deck of the Annapolis Yacht Club (AYC).

3 CHANGES TO SAILING INSTRUCTIONS

- 3.1 Any change to the sailing instructions will be posted before 0900 on the day it will take effect, except that any change to the schedule of races will be posted by 2000 on the day before it will take effect.

4 SIGNALS MADE ASHORE

- 4.1 Signals made ashore will be displayed from the yard arm at the EYC and the AYC Clubhouses.
- 4.2 When flag AP is displayed ashore, '1 minute' is replaced by 'not less than 60 minutes'. This changes RRS race signals.
- 4.3 Flag "L" (black and yellow check) over a numeral pennant means notice number "X" has been posted. This changes RRS race signals.
- 4.4 Flag "N" (white and blue small check) over "A" (white and blue vertical stripe) and 3 sounds, all racing is cancelled.

5 SCHEDULE OF RACES

- 5.1 Rendezvous is at **1000** hrs. Fleet A will rendezvous at CBYRA Region 3 mark "A" (Hackett Point G1), and Fleet B at CBYRA Region 3 mark "M" (Severn River 1AH). Fleet C will rendezvous at Green & White Horn Point off the entrance to Back Creek.
- 5.2 A race committee boat will display flag "L", accompanied by a sound signal, then proceed to the starting area.
- 5.3 The warning signal for the first race of the day is intended to be made at **1100** hrs.
- 5.4 No warning signal will be made after 1500 hrs.

6 CHECK IN

- 6.1 Each boat shall sail by the Committee Boat, hail her sail number and be acknowledged by the committee. This shall be done before the first race in which the boat competes.

7 COURSES, STARTING, RECALLS

7.1 Fleet Assignments, Race Locations, and Committees:

Fleet A Outside (EYC is RC)	Fleet B Outside (AYC is RC)	Fleet C Inside (AYC is RC)
North of Severn River R2 VHF 69	South of Severn River R2 VHF 72	Mouth of Severn River VHF 65A
Class	Class	Class
Leukemia Class	PHRF A0	Herreshoff 12.5
PHRF N	PHRF A1	Harbor 20
Multi Hull	PHRF A2	
J/30	J/35	
PHRF B	J/105	
Alerion 28	J/70	
PHRF C		
Cal 25		

7.2 See Attachments A, B and C for further details, including courses, mark descriptions, starting, and finishing.

7.3 A boat in the starting area, whether or not she is racing, shall not touch or cause another boat to touch an anchored race committee boat that is also a starting mark.

8 RECALLS

8.1 The race committee may attempt to notify boats identified as on the course side by announcing their sail numbers on VHF. Failure to transmit or receive such notification will not be grounds for redress. This changes RRS 62. Fleet A will use VHF 69, Fleet B, VHF 72 and Fleet C, VHF 65A.

9 PENALTY SYSTEM

9.1 The turns penalties of RRS 44.1 shall apply.

10 TIME LIMITS

10.1 Time limits shall be as specified in Attachments A, B, C.

10.2 If at least one boat meets the requirements of RRS 35, then a boat still racing at the time limit will be scored two more points than the number of boats which did finish and will be given a scoring abbreviation of TLE (Time Limit Expired). This changes RRS 35, A4 and A5.

11 PROTESTS AND REQUESTS FOR REDRESS

11.1 For each class, the protest time limit is 60 minutes after the RC signal boat docking time.

11.2 The protest time limit and hearing schedule will be posted on the official notice board at EYC.

11.3 RRS 61.1(a) is changed to require: "Notice of intent to protest and the racing number of the protested boat shall be given to the race committee promptly upon finishing by hail acknowledged by the committee. A boat intending to protest but retiring before finishing shall notify the race committee of her intent and the racing number of the protested boat at the first reasonable opportunity."

12 SCORING

12.1 One completed race shall constitute a series. A boat's series score shall be the sum of her total points with no score excluded. This changes RRS A2.

13 SAFETY REGULATIONS

- 13.1 All boats shall carry a VHF radio capable of communicating on channels 9, 13, 16, 69, 72 and 65A.
- 13.2 A boat that retires from a race, or leaves the racing area between races, shall notify the race committee at the first reasonable opportunity.
- 13.3 A boat may not exercise right of way, cross in proximity to, or interfere with reasonable transit of the race area by commercial ships, tugs, or barges. Boats must take evasive action well in advance of a potentially dangerous situation. The US Coast Guard, ship captains, and bay pilots have been encouraged to report any incident they observe.
- 13.4 Boats shall not enter US Coast Guard "Exclusion Zones". These zones rank as "obstructions".
- 13.5 The race committee or protest committee may protest a boat for breaking SI 13.3 based on information received from any source. The protest time limit does not apply. This changes RRS 60.2, 60.3, and 61.3.
- 13.6 Boats may not protest other boats for breaking SI 13.3. This changes RRS 60.1.

14 INLAND RULE

- 14.1 A boat which may have broken a rule of the Inland Rules may be subject to a report to the USCG or DNR, may be referred to the AYC Disciplinary Committee or may be subject to a RRS 69 (Gross Misconduct) hearing by the Protest Committee.

15 RADIO COMMUNICATIONS

- 15.1 The race committee may make courtesy announcements to Fleet A on VHF 69, Fleet B on VHF 72 and Fleet C on VHF 65A.

16 PRIZES

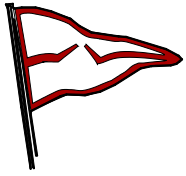
- 16.1 Prizes will be award to the top 3 boats in each class at the Awards Party at EYC, which is scheduled to begin at 1600.

17 DISCLAIMER OF LIABILITY

- 17.1 Competitors participate in the regatta entirely at their own risk. See RRS 4, Decision to Race. The organizing authority will not accept any liability for material damage or personal injury or death sustained in conjunction with or prior to, during, or after the regatta.

18 INSURANCE

- 18.1 Each participating boat shall be insured with valid third-party liability insurance with a minimum coverage of \$300,000 (US\$) per incident or the equivalent.



22nd Annual Leukemia Cup Regatta
Eastport Yacht Club and Annapolis Yacht Club
Saturday, May 31, 2014



Attachment A
For CLASSES PHRF (A0, A1, A2, B, C), J/30, J/35, J/105, J/70,
Alerion 28, Cal 25

1. Starting

1.1 Class flags and starting order for the first race will be:

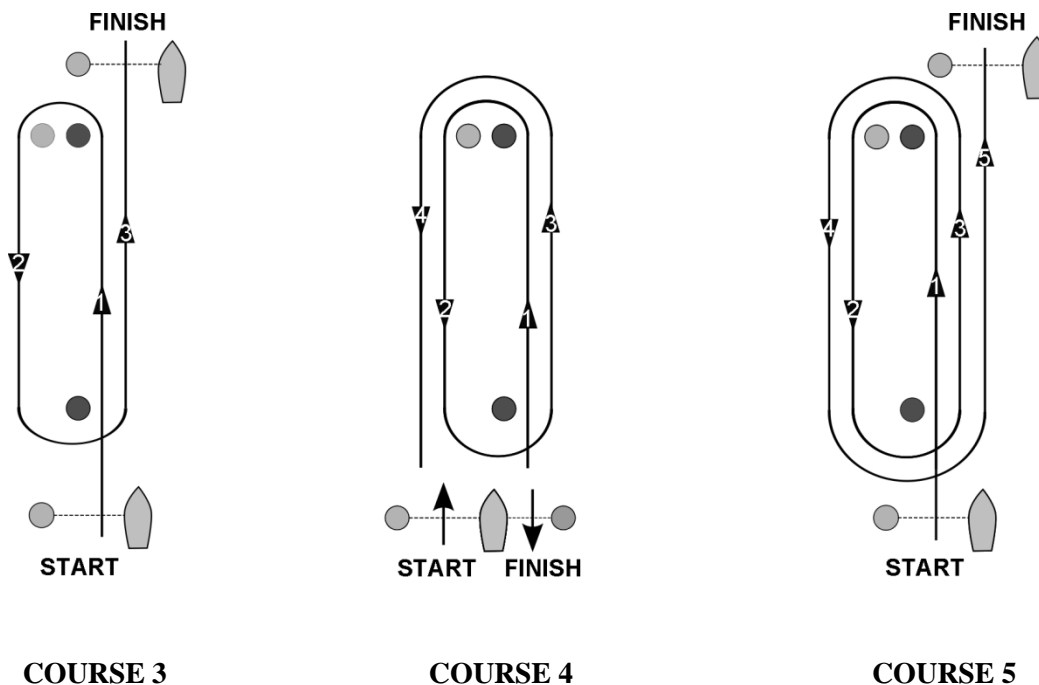
Fleet A Outside (EYC is RC)
 North of Severn River R2
 VHF 69

Fleet B Outside (AYC is RC)
 South of Severn River
 VHF 72

<u>Class</u>	<u>Flag</u>	<u>Class</u>	<u>Flag</u>
J/30	“D”	PHRF A0	“0”
PHRF B	“6”	PHRF A1	“9”
Alerion 28	“Alerion”	PHRF A2	“2”
PHRF C	“7”	J/35	“K”
Cal 25	“T”	J/105	“V”
		J/70	“J/70”

2. Courses

2.1 The courses are as shown in the diagrams (not to scale) and description below.



2.2 The approximate distance between the windward and leeward mark will be shown on a board accompanying the course designator. The magnetic bearing of the first mark will be posted on a board.

2.3 For all courses, a weather mark offset mark may be set.

2.4 The race committee will display a “G” via a placard or flag if it intends to set a leeward gate. When there is a gate, boats shall sail between the gate marks from the direction of the previous mark and round either gate mark.

2.5 For all courses, the leeward mark or gate is not a mark of the course during the first leg of the course. For courses “3” and “5,” the weather mark and offset mark are not marks of the course on the last leg of the course. For course “4” the leeward mark or gate is not a mark of the course on the last leg of the course.

2.6 When the first mark of the course is to be a change mark, code flag C will be displayed by the starting line signal boat before the warning signal, accompanied by a series of repetitive sound signals.

3. Marks

	Fleet A - North Race Area	Fleet B - South Race Area
Location of racing circle	North of Severn River R2	South of Severn River R2
Marks		
Weather and Leeward	Large Orange Cylinders	Large Orange Cylinders
Weather Mark Offset	Small Orange Cylinder	Large Lime Green Cylinder
Change Marks	Yellow Tetrahedrons	Large Orange Cylinder w/Dark Band
Start & Finish Marks	Orange Tetrahedrons	Large Lime Green Cylinder

4. The Start

4.1 The starting line will be between a staff displaying an orange flag on the starboard end race committee boat, and the port end starting mark.

5. Changes to the Course

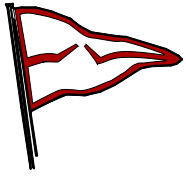
5.1 To change the next leg of the course, the race committee will lay a new mark (or move the finishing line) and remove the original mark as soon as practicable. When in a subsequent change a new mark is replaced, it will be replaced by an original mark.

6. Finishes

6.1 The finishing line will be between the staff displaying a blue flag on the committee boat and the course side of the nearby mark designated by the posted course.

7. Time Limit

7.1 The time limit for an individual race shall be two hours. If no boat has sailed the course within two hours of starting the race shall be abandoned.



22nd Annual Leukemia Cup Regatta
Eastport Yacht Club and Annapolis Yacht Club
Saturday, May 31, 2014



Attachment B
For
Leukemia Class, PHRF N, & Multi Hull

1. Class flags and starting order will be:

Fleet A Outside (EYC is RC)
North of Severn River R2
VHF 69

Class	Flag
Multi Hull	“W”
PHRF N	“5”
Leukemia Class	Leukemia Burgee

2. Course

2.1 The course will be around a combination of CBYRA Region 3 standard racing marks. The RC will designate and post the course using placards no later than 10 minutes prior to the warning signal of each class.

Marks that may be used are:

<i>Letter</i>	<i>Govt. Symbol</i>	<i>Light (if any)</i>	<i>Approx. Location</i>
A	G C “1”		SSE of Hacketts Point
B	R “90”	Fl R 2.5 sec	SSW of Chesapeake Bay Bridge
C	R “88”	Fl R 2.5 sec	North end of Brick House Bar
M	“1AH”	Dolphin Fl R 4 sec	NNE of Tolley Point
J	G “5”	Fl G 4 sec	Severn River Channel
X	R “2”	Fl 2.5 sec BELL	Severn River Channel Entrance
V	Special Inflatable Mark	Orange Cylinder	Approx 1 mile to weather of start

For these courses:

- (a) Marks shall be rounded in the order displayed on the race committee boat, reading from left to right.
- (b) Marks designated in red shall be rounded to port; marks designated in green shall be rounded to starboard.

2.2 Special First Mark The race committee may display a letter “V” to signify that an inflatable large orange cylinder mark is set as the first windward mark of the course. The mark shall be rounded per 2.1 b.

3. The Start

3.1 The starting line will be between a staff displaying an orange flag on the starboard end race committee boat, and the course side of the port end starting mark, which is an orange tetrahedron.

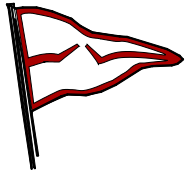
4. The Finish

4.1 The Race Committee will finish boats at a mark of the course. Competitors should look for a boat displaying an “RC Flag” on station at each mark of the course. The finishing line will be between the staff displaying a blue flag and the course side of the nearby mark.

4.2 If the Race Committee decides to shorten the course, it shall be signaled in accordance with RRS 32.2 by displaying code flag “S”.

5. Time Limit

5.1 If no boat in a class sails the course as required by RRS 28 and finishes by 1530, the race committee shall abandon the race for that class.



22nd Annual Leukemia Cup Regatta
Eastport Yacht Club and Annapolis Yacht Club
Saturday, May 31, 2014



Attachment C
Fleet C Sailing Instructions
Herreshoff 12-1/2, Harbor 20

1. RULES

- 1.1 The regatta will be governed by the rules as defined in *The Racing Rules of Sailing* (RRS).
- 1.2 RRS 63.7 (Conflict Between the NOR and SI) is replaced with: "If there is a conflict between a rule in the Notice of Race, one in the Sailing Instructions and/or one in the Fleet C Sailing Instructions, the Fleet C Sailing Instructions shall apply."

- 2. NOTICES TO COMPETITORS** - Notices to competitors will be posted on the official notice boards located on the lower level of EYC outside the clubhouse adjacent to the back door and on the 1st Deck of the AYC Clubhouse outside of the Skipjack Lounge.

- 3. CHANGES TO SAILING INSTRUCTIONS** - Any changes to the Sailing Instructions will be posted before 0900 on the day they will take effect.

4. SIGNALS MADE ASHORE

- 4.1 Signals made ashore will be displayed from the masts at the EYC & AYC Clubhouses.
- 4.2 Flag "AP" with two sound signals means races not started are postponed. Before lowering flag AP, with one sound signal, the approximate time of the warning signal will be posted and will be at least 40 minutes after flag AP is lowered.
- 4.3 Flag "L" over one or more numeral pennant(s) with one sound signal means notice to competitors number __ has been posted.
- 4.4 Flag "N" over "A" and three sound signals means all races scheduled today but not started are cancelled.

5. SCHEDULE OF RACES

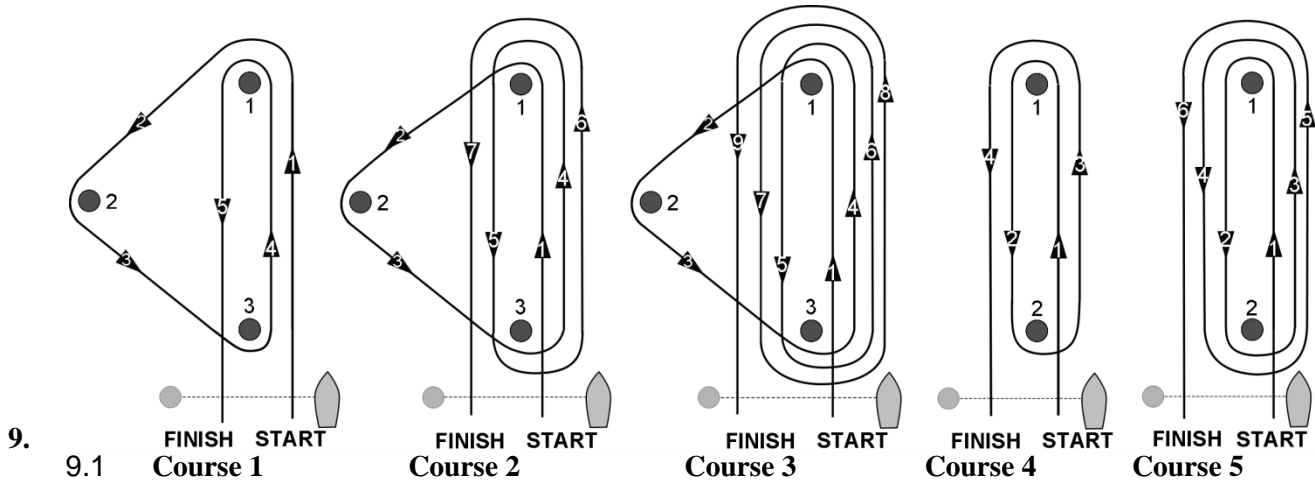
- 5.1 Three races are scheduled.
- 5.2 Rendezvous at 1000 at Green & White Horn Point Mark off Back Creek entrance – Eastport
- 5.3 The warning signal for the first race of the day is intended to be made at 1100.
- 5.4 No warning signal shall be made after 1500.

- 6. CLASS FLAGS** – Boats are not required to fly class Flags.

- 7. RACING AREA** – The racing area will be in the proximity of the mouth of the Severn River.

8. THE COURSES

8.1 The courses will be as shown in the diagrams (not to scale) and description below.



- Course 1: Start, 1, 2, 3, 1, Finish Downwind
- Course 2: Start, 1, 2, 3, 1, 3, 1, Finish Downwind
- Course 3: Start, 1, 2, 3, 1, 3, 1, 3, 1, Finish Downwind
- Course 4: Start, 1, 2, 1, Finish Downwind
- Course 5: Start, 1, 2, 1, 2, 1, Finish Downwind

9.2 No later than the warning signal, the course to be sailed will be displayed on a number board.

10. MARKS

10.1 The leeward, weather and reach marks of the course will be orange tomato type.

10.2 The starting and finish pin may be an orange tomato type or yellow cylinder.

11. THE START

11.1 Starts shall be in accordance with RRS/US Appendix S.

11.2 The starting line will be between the staff or halyard of the orange flag displayed on the race committee signal boat and the course side of the starting mark.

11.3 The starting order for the first race will be: Harbor 20, Herreshoff 12.5.

12. **RECALLS** - The race committee may attempt to notify boats identified as OCS by transmitting sail numbers over VHF Channel 65A. Failure to transmit, hear or receive such transmissions, or the order of sail numbers announced, will not be grounds for redress. This changes RRS 62 (Redress).

13. THE FINISH

13.1 The finish line will be between the staff or halyard of the orange flag displayed on the race committee boat and the course side of the finishing mark.

13.2 Flag A displayed at the finish means no more racing today.

14. **PENALTY SYSTEM** – Penalties while racing: RRS 44.1, One- turn and Two-turn Penalties will apply.

15. TIME LIMITS

15.1 The race will be abandoned if no boat has rounded the first mark within 30 minutes after the start.

15.2 RRS 35 (Time Limit) is replaced by: “If the first boat in her class does not finish within one and one half hours, the race will be abandoned for that class. Boats still racing 20 minutes after the first boat in her class finishes, and not subsequently retiring, being penalized or given redress, will be scored

TLE (Time Limit Expired, see Scoring) and should proceed to the starting area if another race is scheduled.

16. PROTESTS AND REQUESTS FOR REDRESS

- 16.1 A boat displaying a red flag and intending to protest, is encouraged to inform the race committee as soon as possible after finishing by a hail that includes the sail number of the protested boat.
- 16.2 The protest time limit in RRS 61.3 (Protest Time Limit) is 1530. Protest forms are available at the EYC RC office and the front desk of the AYC clubhouse. Protests shall be filed with the race committee at the Race office at EYC.
- 16.3 A list of hearings shall be posted on the Notice Board at EYC and shall constitute notification for **ALL** parties under RRS 61.1(b) and 63.2.

17. SCORING

- 17.1 The Low Point System in RRS Appendix A (Scoring) will apply, except each boats score shall be the total of all her race scores. This changes RRS A2.
- 17.2 One completed race is required to constitute a series.

18. SAFETY

- 18.1 All boats shall carry a VHF radio capable of communications on channels 9, 13, 16 and 65A.
- 18.2 RRS 40 (Personal Flotation Devices) is replaced by: "It shall be the individual responsibility of each competitor to wear adequate personal buoyancy when conditions warrant."
- 18.3 A boat that retires from a race, or between races, shall notify the race committee at the first reasonable opportunity.
- 18.4 Boats may not exercise right of way, cross in close proximity to, or interfere with the reasonable transit of the race area by commercial ships, tugs, or barges. Competitors must take evasive action well in advance of any potentially dangerous situation. The US Coast Guard, ship captains, and bay pilots have been encouraged to report any incident they observe.
- 18.5 Boats shall not enter US Coast Guard "Exclusion Zones". These zones rank as "obstructions".
- 18.6 The race committee or protest committee may protest a boat for breaking Sailing Instruction 17.4 and 17.5 based on information received from any source. The protest time limit does not apply. This changes RRS 60.2 (Race Committee Protest), 60.3 (Protest Committee Protest), and 61.3 (Protest Time Limit).

19. RADIO COMMUNICATIONS

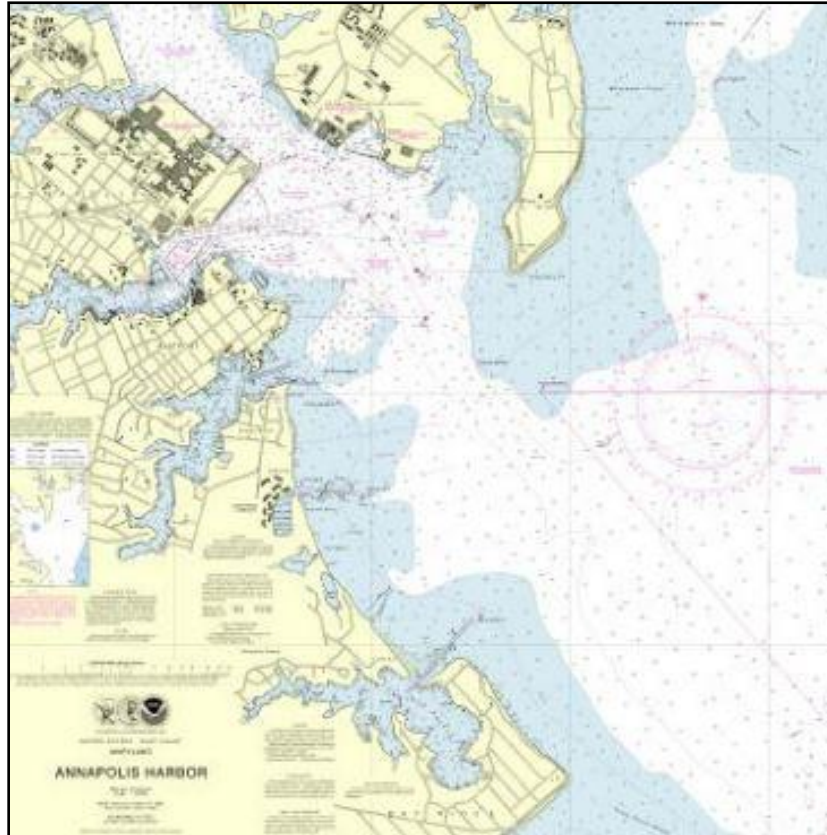
- 19.1 The race committee may attempt to provide information on VHF Channel 65A as a courtesy. In all cases race signals shall govern.
- 19.2 A boat may not make any radio transmissions while racing except on VHF Channel 9, 13, 16, or with the race committee on VHF Channel 65A. While racing, a boat shall not receive ANY communication not available to all boats. This restriction includes mobile telephones.

1. **PRIZES** - First through third place prizes will be awarded.
2. **DISCLAIMER OF LIABILITY** - Competitors participate in the regatta entirely at their own risk. See RRS 4 (Decision to Race). The organising authority will not accept any liability for material damage or personal injury or death sustained in conjunction with or prior to, during, or after the regatta.
3. **INSURANCE** - Each participating boat shall be insured with valid third-party liability insurance with a minimum coverage of \$300,000 (US\$) per event or the equivalent.

Social - Awards will be presented at the Leukemia Cup party at EYC. The party is scheduled after racing.

RACING AREA

The marks on this page are specified in their anticipated 2013 configuration. They have not been verified. It is responsibility of competitors ascertain the actual characteristics and locations these marks.



the
to
of