

2014 Melges 32 World Championship

December 1 – 7, 2014

Miami, Florida, USA

SAILING INSTRUCTIONS

The Organizing Authority (OA) is the International Melges 32 Class Association (IM32CA) with support from the Coconut Grove Sailing Club and Melges USA.

Hosted by: Coconut Grove Sailing Club
Event Headquarters: Miami Beach Marina

1. RULES

- 1.1. The regatta will be governed by the rules as defined in *The Racing Rules of Sailing* (RRS).
- 1.2. The class rules for the purpose of the definition of *rules* are the 2014 International Melges 32 Class Rules (IM32CR).
- 1.3. The *Equipment Rules of Sailing* (ERS), Part I – Use of Equipment, shall apply.
- 1.4. Only the prescriptions of US SAILING to rules 67 and 76.1 as well as rule 61.4 shall apply.
- 1.5. The International Melges 32 Class Rules (IM32CR) Section H (EVENT RULES), shall apply except as specifically changed in the Notice of Race (NOR) or in the Sailing Instructions (SIs).
- 1.6. IM32CR C.1.1 RULES shall apply:
 - RRS 43.1(b) shall not apply.
 - RRS 49 is changed to read:
49 CREW POSITION
49.1 Competitors shall use no device designed to position their bodies outboard, other than hiking straps, stiffeners worn under the thighs and the lower lifeline as described in rule 49.2.
49.2 Lifelines shall meet the tautness requirements in the Class Rules. Competitors shall not position any part of their torsos outside the lifelines, except briefly to perform a necessary task. However, a competitor sitting on the deck facing outboard with his waist inside the lower lifeline may have the upper part of his body outside the upper lifeline.
 - RRS 42.3(c) is modified to allow the spinnaker sheet to be trimmed without restriction.
- 1.7. In accordance with IM32CR H.4.3(a), races will not be started when the Race Committee deems that winds are consistently at or above 25 knots or gusting to 28 knots and above. If a race has been started and the wind increases to 25 knots and above, it remains at the discretion of the Race Committee whether or not to abandon the race. Races will not be started unless winds are consistently above 5 knots at the time of the start.
- 1.8. In accordance with IM32CR H.7 (Competitor Conduct), all owners are responsible for their crew's conduct and shall at all times exemplify the Melges 32 Class Mission Statement and Code of Conduct.
- 1.9. On the water umpiring will be used as described in SI 16.
- 1.10. The Jury may impose suitable penalties, other than disqualification, for violations of the Class Rules, or other non-Part 2 rules. This changes RRS 64.1.
- 1.11. Where there is a conflict between the NOR and these SIs, these SIs shall prevail. This changes RRS 63.7.
- 1.12. In the case of a conflict between languages, this English text shall prevail.
- 1.13. Class Rule C.2.2 (h) (4) is changed so that the requirement for non-owner charterers of completion of a minimum of three (3) regional class events is waived provided the Melges 32 Helmsman Eligibility Committee approves said non-owner charterer.

2. NOTICES TO COMPETITORS

- 2.1. Notices to competitors will be posted on the Official Notice Board located inside the official regatta tent at Miami Beach Marina.
- 2.2. The Race Committee intends to utilize VHF Channel 73 for the purposes of disseminating pertinent race information (including individual recall identifications). Failure of a boat to receive these

communications, the order in which recall numbers are announced, and the timeliness of announcements shall not be grounds for redress. This changes rule 62.1(a).

3. CHANGES TO SAILING INSTRUCTIONS

Any change to the Sailing Instructions will be posted before 0830 on the day it will take effect, except that any change to the schedule of races will be posted by 2000 on the day before it will take effect.

4. SIGNALS MADE ASHORE

- 4.1. Signals made ashore will be displayed on the main flagpole at MBM.
- 4.2. When flag AP is displayed ashore, '1 minute' is replaced with 'not less than 60 minutes' in the race signal AP. This changes rule Race Signals.

5. REGATTA SCHEDULE

- 5.1. The schedule for the event is as follows:

Saturday, 29 November

0800 – 1800	Measurement Checks
0900 – 1800	Registration/Check-in, Crew Weigh-in

Sunday, 30 November

0800 – 1800	Measurement Checks
0900 – 1800	Registration/Check-in, Crew Weigh-in

Monday, 1 December- PRE-WORLD CHAMPIONSHIP

0800 – 1800	Measurement Checks
0900 – 1800	Registration/Check-in, Crew Weigh-in
1100	Initial Warning Signal for Pre-World Championship (three races scheduled)
After Racing	Pre-World Championship Awards Ceremony

Tuesday, 2 December- LAY DAY

0900 – 1800	Registration/Check-in, Crew Weigh-in
1700	All competitors must be afloat by this time
1900	Opening Ceremony

Wednesday, 3 December- WORLD CHAMPIONSHIP RACE DAY ONE

0800 – 0830	Substitute Crew Weigh-in
1100	Initial Warning Signal
After Racing	Daily Awards/Social

Thursday, 4 December- WORLD CHAMPIONSHIP RACE DAY TWO

0800 – 0830	Substitute Crew Weigh-in
1100	Initial Warning Signal
After Racing	Daily Awards/Social

Friday, 5 December- WORLD CHAMPIONSHIP RACE DAY THREE

0800 – 0830	Substitute Crew Weigh-in
1100	Initial Warning Signal
After Racing	Daily Awards/Social

Saturday, 6 December- WORLD CHAMPIONSHIP RACE DAY FOUR

0800 – 0830	Substitute Crew Weigh-in
1100	Initial Warning Signal
After Racing	Daily Awards/Social

Sunday, 7 December- WORLD CHAMPIONSHIP RACE DAY FIVE

0800 – 0830	Substitute Crew Weigh-in
1100	Initial Warning Signal
1400	No initial Warning Signal after this time
After Racing	Final Awards Ceremony

- 5.2. Up to ten (10) races are scheduled. The Race Committee may run fewer races at its discretion and may make up a race on any day, if needed. Two races are scheduled for a given day.
- 5.3. The OA and/or the Race Committee reserve the right to modify the program due to weather conditions or other causes.

6. CLASS FLAGS

The Class flag will be the M32 class insignia in blue on a white background or Numeral Pennant #1.

7. RACING AREAS

The racing area for a given day will be chosen from the locations provided in Attachment A. The Race Committee will post the chosen location on the Official Notice Board and announce via VHF prior to departing the dock.

8. THE COURSES

- 8.1. No later than the Warning Signal, the Race Committee will display the course, approximate compass bearing, and distance of the first leg. Failure to broadcast or to receive this notification shall not constitute grounds for redress. This changes 62.1(a).
- 8.2. The information will be arranged vertically.

Example:

4		<i>Course</i>
300		<i>Approximate bearing to Mark 1 (magnetic)</i>
1.5		<i>Approximate distance to Mark 1 (nautical miles)</i>

Course 4: (4 Legs) Start – 1 – 1a – Gate – 1 – 1a – Finish (Downwind)

Course 5: (5 Legs) Start – 1 – 1a – Gate – 1 – 1a – Gate – Finish (Upwind)

- 8.3. Marks 1 and 1a shall be rounded to port. Mark 1a is an offset mark and will be positioned to port of Mark 1 (looking upwind).
- 8.4. If only one Gate mark is set, boats shall round the single mark to port.
- 8.5. Except when there is a change of course, the Gate will be positioned to windward of the RC Signal Boat and may be laid after the starting signal.
- 8.6. Except for when there is a change of course:
- The finish for course 4 will be to leeward of the Gate
 - The finish for course 5 will be in the approximate position of Mark 1

9. MARKS

- 9.1. The original marks of the course will be orange inflatable marks.
- 9.2. In the event of a change of course, change marks will be yellow inflatable marks.

10. THE START

The starting line will be between a staff displaying an orange flag on the Race Committee Signal Boat and a staff displaying an orange flag on a port end Line Boat. In the event that the port end Line Boat is not on station, it will be replaced by a yellow starting mark and the starting line will be between the staff on the Race Committee Signal Boat and the course side of said mark.

11. CHANGE OF THE NEXT LEG OF THE COURSE

To change the next leg of the course, the race committee will lay a new mark (or move the finishing line) and remove the original mark as soon as practicable. When in a subsequent change a new mark is replaced, it will be replaced by an original mark.

12. THE FINISH

- 12.1. For downwind finishes, the finishing line will be on the opposite side of the Race Committee Signal Boat from the starting line. The finishing line will be between a staff displaying an orange flag on a Race Committee Boat and the course side of a nearby yellow inflatable mark.
- 12.2. For windward finishes, the finishing line will be between a staff displaying an orange flag on a Race Committee Boat and the course side of a nearby yellow inflatable mark to port of said Committee Boat.
- 12.3. Flag A displayed, with no sound, while boats are finishing means “no more racing today.”

13. PENALTY SYSTEM

- 13.1. IM32CR H.4.1 (a) shall apply as modified herein:
The first two sentences of rule 44.1 are changed to read as follows: “A boat may take a One-Turn Penalty when she may have broken a rule of Part 2 or rule 31 while racing. However, when she may have broken a rule of Part 2 while in the zone of a rounding or finishing mark, her penalty shall be a Two-Turns Penalty.”

- 13.2. Unless the course is shortened to finish at the windward mark, penalties within 3 boat lengths of the windward mark or on the offset leg may be delayed and taken as soon as possible on the downwind leg.
- 13.3. Decisions of the jury will be final as provided in RRS 70.5.

14. TARGET TIMES AND TIME LIMIT

- 14.1. The target time for each race is between 60 and 90 minutes. Failure to meet the target time shall not be grounds for redress. This changes rule 62.1(a).
- 14.2. The time limit for the first boat to sail the course and finish in accordance with rule 28 shall be 120 minutes. Boats still racing more than 30 minutes after the first boat sails the course and finishes will be scored DNF without a hearing. This changes rules 35 and A5.

15. PROTESTS AND REQUESTS FOR REDRESS

- 15.1. Boats intending to protest shall communicate their intentions with the Race Committee via VHF at the conclusion of the race to which the protest will apply.
- 15.2. Protest forms are available at the regatta tent at MBM. Protests and requests for redress or reopening shall be delivered there within the appropriate time limit.
- 15.3. The protest time limit is 60 minutes after the RC Signal Boat docks at MBM. The docking time will be posted on the Official Notice Board. Hearings will commence as soon as practicable.
- 15.4. Breaches of instructions 18, 19, and 21 will not be grounds for a protest by a boat. This changes rule 60.1(a). Penalties for these breaches may be less than disqualification if the jury so decides. The scoring abbreviation for a discretionary penalty imposed under this instruction will be "DPI."
- 15.5. On the last scheduled day of racing a request for reopening a hearing shall be delivered:
- Within the protest time limit if the requesting party was informed of the decision on the previous day and;
 - No later than 30 minutes after the requesting party was informed of the decision on that day. This changes rule 66.
- 15.6. On the last scheduled day of racing a request for redress based on a jury decision shall be delivered no later than 30 minutes after the decision was posted. This changes rule 62.2.
- 15.7. In the case of a protest, the representative from each yacht that attends the protest in the protest room shall be the owner or the Group 1 driver. Group 3 sailors from the boat protesting or the boat being protested are not allowed in the protest room or to be in contact with the representative in the protest room. Group 3 sailors from other boats may be allowed in the protest room as a witness. This changes rule 63.3(a).
- 15.8. The Race Committee will post a list of boats that have been given starting penalties or other Race Committee Actions. If this list is posted prior to the filing deadline, requests for redress based on this posting shall be filed no later than 30 minutes after the protest time limit. This changes rule 62.2.
- 15.9. Video and photos taken from any official boat, support boat, or spectator boat shall not be used as evidence at protest hearings. This changes rule 63.6.

16. ON THE WATER UMPIRING

- 16.1. On the water umpiring will be used for rules of Part 2 and RRS 31.
- 16.2. The umpires, comprised of members of the jury, will blow a whistle when they have observed a breach of a rule of Part 2 or a breach of RRS 31, and they expect one or more boats to take a penalty. If the incident results in a protest hearing, the umpire(s) may provide testimony as a witness(es).
- 16.3. Actions or non-actions, positioning on the course or any possible interference by on the water umpires shall not be grounds for redress. This changes RRS 60.1(b) and 62.1.

17. SCORING

The Low Point Scoring System of RRS Appendix A will apply. Rule A2 is modified as follows:

- Three races are required to be completed to constitute a series.
- When fewer than six races have been completed, a boat's series score will be the total of her race scores.
- When six or more races have been completed, a boat's series score will be the total of her race scores excluding her worst score.

18. SAFETY REGULATIONS

A boat that retires from a race or leaves the racing area between races shall notify the Race Committee as soon as practicable.

19. REPLACEMENT OF CREW OR EQUIPMENT

- 19.1. Substitution of competitors will not be allowed without the prior written approval of the OA for the race to which it applies.
- 19.2. Substitution of damaged or lost equipment will not be allowed unless authorized by the OA. Requests for substitution shall be made at the first reasonable opportunity.

20. EQUIPMENT AND MEASUREMENT CHECKS

A boat or equipment may be inspected at any time for compliance with the class rules and Sailing Instructions.

21. SUPPORT BOATS

- 21.1. Restrictions on Support Boats shall apply as described in International Melges 32 Class Rule H.5 OUTSIDE ASSISTANCE.
- 21.2. All support boats shall be registered with the OA and will be required to fly identification.
- 21.3. All support boats shall maintain an active VHF radio tuned to the fleet frequency and shall adhere to any instructions provided by the Race Committee.
- 21.4. Support boats shall not interfere with the racing nor an official boat carrying out its duties in any way and shall stay at a distance outside the race course where their wake causes no problem.
- 21.5. Support boats found in violation of SI 21 may face banishment from the racing area after sufficient warning as deemed appropriate by the OA.
- 21.6. Excessive violations of SI 21 by a support boat may cause their affiliated boat(s) to be liable for a protest by the OA and penalty at the discretion of the jury.

22. OFFICIAL BOATS

The OA may appoint one or more press and/or photo boats that may be allowed within the race course. The actions of any boat appointed under this sailing instruction shall not be grounds for redress. This changes RRS 62.1.

23. PRIZES

IM32CR H.6 (PRIZES) shall apply:

Trophies and Prizes will be awarded to:

- (a) The best boat that has an all Corinthian crew.
- (b) The winning helmsman and each crew member for the top five boats overall.
- (c) The winner of each race.
- (d) Additional prizes at the discretion of the OA

24. DISCLAIMER OF LIABILITY

- 24.1. Liability Waiver Form - As a condition of entry, each owner, skipper and individual participating crew member shall sign a liability waiver/media release. The fully executed Liability Waiver Form shall be submitted at registration prior to racing. The Liability Waiver Form will be posted on the regatta website and available at registration.
- 24.2. Sailing is an activity that carries with it an inherent risk of damage and injury. Competitors participate in the regatta entirely at their own risk. See rule 4, Decision to Race. The Coconut Grove Sailing Club, International Melges 32 Class Association, any sponsors and affiliated companies, and each of their officers, directors, employees, sponsors and agents (collectively as "Releasees"), will not accept any liability for material damage or personal injury or death sustained in conjunction with or prior to, during, or after the regatta.

25. FURTHER INFORMATION

For further information please contact:

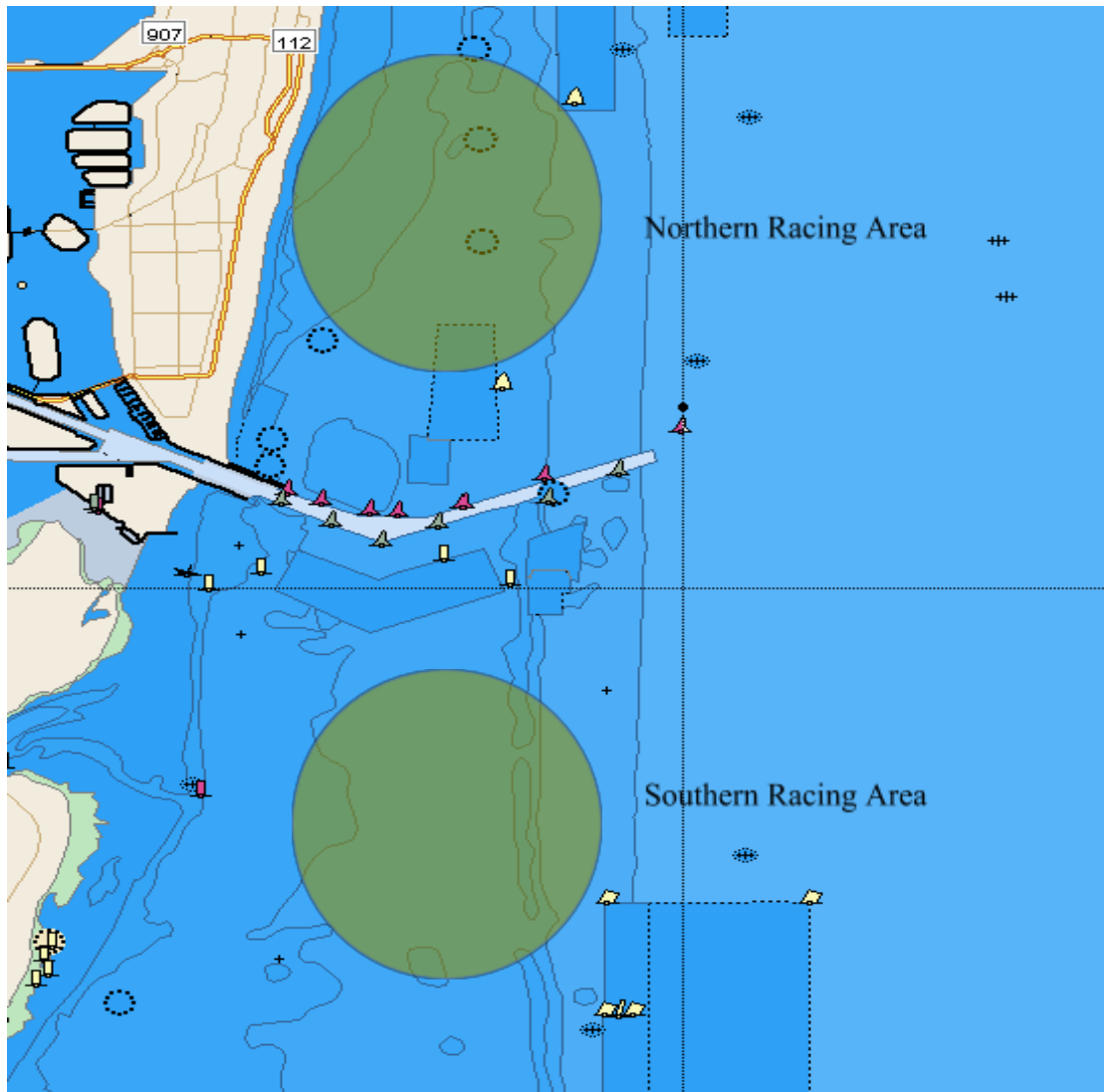
Joy Dunigan- International Class Administrator // +1.912.398.5776 // classadmin@melges32.com

Anderson Reggio- Principal Race Officer // +1.267.304.1873 // andersonreggio@gmail.com

Ron Rostorfer- Coconut Grove Sailing Club Regatta Chair

ATTACHMENT A

VENUE- Racing Areas



Not to be used for navigation