

# MELGES 32 WORLD CHAMPIONSHIP 2014

NOTICE OF RACE



**MELGES**<sup>32</sup>

WORLD CHAMPIONSHIP  
2014

MIAMI BEACH MARINA ★ DECEMBER 1-7

[MELGES32WORLDCHAMPIONSHIP.COM](http://MELGES32WORLDCHAMPIONSHIP.COM)



The Organizing Authority (OA) is the International Melges 32 Class Association (IM32CA) with support from the Coconut Grove Sailing Club and Melges USA.

## 1. VENUE

- 1.1 The International Melges 32 Class Association (IM32CA) is the Organizing Authority (OA) and the Coconut Grove Sailing Club (CGSC) is the host.
- 1.2 Onshore functions will be at the Miami Beach Marina located at 300 Alton Road, Miami FL 33139, +1.305.673.6000.
- 1.3 Dockage for all competitors shall be at the Miami Beach Marina.
- 1.4 Websites:  
International Melges 32 Class Association [www.melges32.com](http://www.melges32.com)  
Coconut Grove Sailing Club [www.cgsc.org](http://www.cgsc.org)  
Miami Beach Marina [www.miamibeachmarina.com](http://www.miamibeachmarina.com)  
Melges USA [www.melges.com](http://www.melges.com)

## 2. RULES

- 2.1 The regatta will be governed by the rules as defined in *The Racing Rules of Sailing (RRS)*.
- 2.2 The class rules for the purpose of the definition of rules are the International Melges 32 Class Rules (IM32CR).
- 2.3 *The Equipment Rules of Sailing (ERS)*, Part I – Use of Equipment, shall apply.

- 2.4 Only the prescriptions of US SAILING to rules 67 and 76.1 as well as rule 61.4 shall apply. These prescriptions will be posted on the regatta website.
- 2.5 The International Melges 32 Class Rules (IM32CR) Section H (EVENT RULES), shall apply except as specifically changed in this Notice of Race (NOR) or in the Sailing Instructions (SIs).
- 2.6 IM32CR C.1.1 (b) is changed as follows:  
(b) RRS 49 is changed to read:  
  
49 CREW POSITION  
49.1 Competitors shall use no device designed to position their bodies outboard, other than hiking straps, stiffeners worn under the thighs and the lower lifeline as described in rule 49.2.  
49.2 Lifelines shall meet the tautness requirements in the Class Rules. Competitors shall not position any part of their torsos outside the lifelines, except briefly to perform a necessary task. However, a competitor sitting on the deck facing outboard with his waist inside the lower lifeline may have the upper part of his body outside the upper lifeline.
- 2.7 In accordance with IM32CR H.4.3(a), races will not be started when the Race Committee deems that winds are consistently at or above 25 knots or gusting to 28 knots and above. If a race has been started and the wind increases to 25 knots and above, it remains at the discretion of the Race Committee whether or not to abandon the race. Races will not be started unless winds are consistently above 5 knots at the time of the start.

- 2.8 In accordance with IM32CR H.8 (Competitor Conduct), all owners are responsible for their crew's conduct and shall at all times exemplify the Melges 32 Class Mission Statement and Code of Conduct.
- 2.9 On the water umpiring may be used and, if so, will be fully described in the SIs.
- 2.10 The Jury may impose suitable penalties, other than disqualification, for violations of the Class Rules, or other non-Part 2 rules. This changes RRS 64.1.
- 2.11 Where there is a conflict between this NOR and the SIs, the SIs shall prevail. This changes RRS 63.7.
- 2.12 In the case of a conflict between languages, this English text shall prevail.

**3. ADVERTISING**

- 3.1 IM32CR C.4, (ADVERTISING), will apply.
- 3.2 Boats may be required to display advertising chosen and supplied by the Organizing Authority. If provided, flags and/or decals shall be displayed beginning Monday, December 1 through Sunday, December 7, 2014.

**4. ELIGIBILITY AND ENTRY**

- 4.1 The event is open to all boats of the International Melges 32 Class that meet the requirements of the IM32CR.
- 4.2 In accordance with IM32CR H.7 (CREW LISTS), no later than Monday, November 11, 2014, each entry is required to submit an online Crew Declaration (IM32CR Appendix 1) to the IM32CA Administrator. The form shall include ISAF ID numbers, Group Classifications and expiration dates for each participating crew member, as well as all approved helmsmen. Boats will not be eligible for racing until all classifications have been checked.
- 4.3 All Melges 32s competing shall race with International Melges 32 Class Association Bow Numbers affixed as instructed in IM32CA Bow Number Policies and Procedures.
- 4.4 Each entry shall submit a completed Entry Form by registering online via [www.yachtscore.com](http://www.yachtscore.com) and pay the entry fee no later than Saturday, November 1, 2014. Entries received after that date will be accepted only with the prior approval of the Organizing Authority and IM32CA. Original signatures shall be provided at registration.
- 4.5 Each entry is required to provide the IM32CA Administrator with a completed Sail Declaration (IM32CR Appendix 2) and Owner Compliance Declaration Form (IM32CR Appendix 5) before the close of registration on Tuesday, December 2, 2014.

**5. CLASSIFICATION**

- 5.1 The ISAF Sailor Classification Code 22 shall apply. Details of the ISAF Classification Code and information on how to apply can be found on ISAF's website at [www.sailing.org/classification](http://www.sailing.org/classification).
- 5.2 All submitted Crew Declarations will be posted online at [www.melges32.com](http://www.melges32.com).
- 5.3 Classification protests may be submitted to the IM32CA beginning, Monday, November 24, 2014. The Classification .. Protest Time Limit under ISAF Regulation 22.1 is 1800 hours on Sunday, November 30, 2014.
- 5.4 A representative of the ISAF Sailor Classification Commission may be present during registration and may carry out spot checks.

**6. REGISTRATION**

- 6.1 To complete registration, all competitors shall have:
  - completed entry online;
  - submitted all required Class forms;
  - paid all entry fees; and
  - submitted a completed Entry Form and Signed Release Agreement with original signatures.
- 6.2 Only boats that have completed registration by 1800 hours on Tuesday, December 2, 2014, will be eligible to race. Late registration may be allowed only with the prior approval of the OA.

**7. FEES**

- 7.1 The entry fee is US \$1,600 for entries received prior to July 1. For entries received between July 1 and August 31, the fee shall be US \$1,800. For entries received between September 1 and November 1, the fee shall be US \$2,000. This entry fee includes dockage between November 30 and December 7, 2014 as well as tickets for up to eight crew members to all social events. Additional tickets to social events may be purchased.
- 7.2 Teams are responsible for any costs associated with, launching and hauling, trailer storage, and car parking other than that described in NOR 7.1.

**8. REGATTA SCHEDULE**

- Friday, 28 November
  - Measurement Checks..... 0800 - 1800
- Saturday, 29 November
  - Measurement Checks..... 0800 - 1800
  - Registration/Check-in, Crew Weigh-in ..... 0900 - 1800

**8. REGATTA SCHEDULE (CONTINUED)**

**Sunday, 30 November**

Measurement Checks.....	0800 - 1800
Registration/Check-in, Crew Weigh-in .....	0900 - 1800
Informal Practice Racing .....	1300
Robertissima Christmas Party .....	TBD

**Monday, 1 December - PRE-WORLD CHAMPIONSHIP**

Measurement Checks.....	0800 - 1800
Registration/Check-in, Crew Weigh-in .....	0900 - 1800
Initial Warning Signal for Pre-World Championship.....	1100 (three races scheduled)
Pre-World Championship Awards Ceremony .....	After Racing

**Tuesday, 2 December - LAY DAY**

Registration/Check-in, Crew Weigh-in .....	0900 - 1800
All competitors must be afloat by this time .....	1700
Opening Ceremony.....	1900

**Wednesday, 3 December - WORLD CHAMPIONSHIP RACE DAY 1**

Substitute Crew Weigh-In.....	0800 - 0830
Initial Warning Signal.....	1100
Daily Awards/Social .....	After Racing

**Thursday, 4 December - WORLD CHAMPIONSHIP RACE DAY 2**

Substitute Crew Weigh-In.....	0800 - 0830
Initial Warning Signal.....	1100
Daily Awards/Social .....	After Racing

**Friday, 5 December - WORLD CHAMPIONSHIP RACE DAY 3**

Substitute Crew Weigh-In.....	0800 - 0830
Initial Warning Signal.....	1100
Daily Awards/Social .....	After Racing

**Saturday, 6 December - WORLD CHAMPIONSHIP RACE DAY 4**

Substitute Crew Weigh-In.....	0800 - 0830
Initial Warning Signal.....	1100
Daily Awards/Social .....	After Racing

**Sunday, 7 December - WORLD CHAMPIONSHIP RACE DAY 5**

Substitute Crew Weigh-In.....	0800 - 0830
Initial Warning Signal.....	1100
No initial Warning Signal after this time .....	1400
Final Awards Ceremony .....	After Racing

8.1 Up to ten (10) races are scheduled. The Race Committee (RC) may run fewer races at its discretion and may make up a race on any day, if needed. A maximum of three races may be sailed on any day.

**9. MEASUREMENTS**

- 9.1 Crews shall weigh in during any of the times listed in NOR 8. There will be no further weight checks during the championship.
- 9.2 The OA and/or Class Association representative may weigh, measure, or inspect any boat and/or her equipment and sails

before, during, or after the races.

- 9.3 There will be the following measurement checks:
  - Sail Measurement
  - Lifeline
  - Random Measurement Checks
  - Corrector Weight
  - Safety Equipment
  - Mast Cylinder
- 9.4 In accordance with RRS G3, chartered or loaned boats may display national letters and sail numbers in contravention of class rules.
- 9.5 IM32CR H.3 (SAIL LIMITATIONS MARKS) shall apply. Sails without valid certification marks may be fully measured by prior appointment outside of the designated measurement times listed in NOR 8. Boats seeking such measurement may be charged for services.
- 9.6 All measurements will be done by appointment only to be coordinated with IM32CA Administrator. A schedule of measurements will be posted on the event website. The schedule is subject to change. Changes will be announced via email and posted on the event website.

**10. REPLACEMENT OF CREW**

- 10.1 Crew substitutions before and during the event are permitted with the prior written approval of the OA. A revised crew list must be submitted for approval prior to the race(s) to which it applies.
- 10.2 Crew substitutions may weigh in during the designated Substitute Crew Weigh-in Period. Weigh-in must be completed before 0830 on the first day that the substitute will compete.

**11. SAILING INSTRUCTIONS**

- 11.1 The Sailing Instructions (SIs) will be available no later than 1400 hours on Friday, November 28, at Registration, and online on the event website.

**12. VENUE | RACING AREA**

- 12.1 The racing area will be located in the waters adjacent to Miami Government Cut, east of Key Biscayne Beach. Attachment A shows the approximate location of the racing areas.

**13. THE COURSES**

- 13.1 The courses to be sailed will be a windward/leeward configuration as described in the SIs.

**14. PENALTY SYSTEM**

- 14.1 IM32CR H.4.1 (a) shall apply as modified herein: The first two sentences of rule 44.1 are changed to read as follows: "A boat may take a One-Turn Penalty when she may have broken a rule of Part 2 or rule 31 while racing. However, when she may have broken a rule of Part 2 while

in the zone of a rounding or finishing mark, her penalty shall be a Two-Turns Penalty.”

- 14.2 Unless the course is shortened to finish at the windward mark, penalties within the zone of the windward mark or on the offset leg may be delayed and taken as soon as possible on the downwind leg.
- 14.3 Decisions of the International Jury will be final as provided in RRS70.5.

#### 15. PROTESTS AND REQUESTS FOR REDRESS

- 15.1 IM32CR H.1 (PROTEST TIME LIMITS) shall apply. The protest time limit will be described in the SIs.
- 15.2 IM32CR H.4.1(b) shall apply (this supersedes IM32CR H.2): In the case of a protest, the representative from each yacht that attends the protest in the protest room shall be the owner or the Group 1 driver. Group 3 sailors from the boat protesting or the boat being protested are not allowed in the protest room or to be in contact with the representative in the protest room. Group 3 sailors from other boats may be allowed in the protest room as a witness.

#### 16. SCORING

- 16.1 In accordance with IM32CR H.4.2 (Scoring), the following changes to rule A2 shall apply:
- (a) Three races are required to be completed to constitute a series.
  - (b) When fewer than six races have been completed, a boat's series score will be the total of her race scores.
  - (c) When six or more races have been completed, a boat's series score will be the total of her race scores . excluding her worst score.

#### 17. COACH AND SUPPORT BOATS

- 17.1 IM32CR H.5 (OUTSIDE ASSISTANCE) will apply. (See Attachment B)
- 17.2 Coach and support boats shall be registered with the OA during Check-in. Only support boats that have registered with the OA and carry identification provided by the OA will be allowed in the racing area.
- 17.3 In addition to the requirements of IM32CR H.5, Coach and support boats shall keep clear of the racing area at all times during racing. Any coach or support boat that interferes with the racing in any way, including creating excess wash or hindering an official boat carrying out its duties, shall cause their affiliated boat(s) to be liable for a penalty at the discretion of the Jury.

#### 18. PRESS AND OFFICIAL SPECTATOR BOATS

- 18.1 All press and official spectator boats shall be registered with the OA during Check-in.
- 18.2 Press and spectator boats shall not interfere with the racing in any way and shall stay at a distance outside the race course where their wake causes no problem.
- 18.3 The OA may appoint one or more press and photo boat(s) that may be allowed within the race course. The position or effects of this boat(s) shall not be grounds for redress. This changes rule 62.1.
- 18.4 Press and spectator boats may be required to display an identification flag, which shall be supplied by the OA.

#### 19. LAUNCHING AND BERTHING

- 19.1 As part of the entry fee, each boat shall be provided with dockage at the Miami Beach Marina.
- 19.2 Each team is responsible for making its own arrangements for launching/hauling, trailer storage, work trailer storage, RIB/support boat and trailer storage and dockage.
- 19.3 Information about other support facilities in the area will be posted on the regatta website.

#### 20. HAUL-OUT RESTRICTIONS

- 20.1 All competing boats shall be afloat by 1700 Tuesday, December 2, 2014.
- 20.2 Boats shall not be hauled out during the Championship except with and according to the terms of prior written permission of the OA.

#### 21. RADIO COMMUNICATIONS

- 21.1 The Race Committee will endeavor to hail each yacht that is OCS via VHF radio. The timing of such hail, the sequence of the hails, or the failure to make, or for the competitor to hear, such an announcement shall not be grounds for redress. This changes rule 62.1(a).
- 21.2 A boat shall neither make radio transmissions while racing nor receive radio communications not available to all boats. This restriction also applies to mobile phones and any other electronic device.

#### 22. PRIZES

- 22.1 IM32CR H.6 (PRIZES) will apply:  
Trophies and Prizes will be awarded to:
- (a) The best boat that has an all Corinthian crew
  - (b) The winning helmsman and each crew member for the top five boats overall
  - (c) The winner of each race
  - (d) Additional prizes at the discretion of the OA



### 23. DISCLAIMER OF LIABILITY

- 23.1 Liability Waiver Form — As a condition of entry, each owner, skipper and individual participating crew member shall sign a liability waiver/media release. The fully executed Liability Waiver Form shall be submitted at registration prior to racing. The Liability Waiver Form will be posted on the regatta website and available at registration.
- 23.2 Sailing is an activity that carries with it an inherent risk of damage and injury. Competitors participate in the regatta entirely at their own risk. See rule 4, Decision to Race. The Coconut Grove Sailing Club, International Melges 32 Class Association, any sponsors and affiliated companies, and each of their officers, directors, employees, sponsors and agents (collectively as “Releasees”), will not accept any liability for material damage or personal injury or death sustained in conjunction with or prior to, during, or after the regatta.

### 24. INSURANCE

- 24.1 Each participating boat shall be insured with valid third-party liability insurance with a minimum cover of \$1,000,000.00 per event or the equivalent if expressed in other currency. Proof of insurance shall be provided upon request.

### 25. CHANGES TO NOTICE OF RACE

- 25.1 The organization reserves the right to amend this Notice of Race in accordance with rule 89.2 (a). Any change made to this Notice of Race will be published on the regatta website.

### 26. MEDIA RIGHTS

- 26.1 Each participant shall acknowledge that all media and commercial rights belong exclusively to the OA and the IM32CA and shall grant to the OA and IM32CA the unrestricted right and permission to use and publish any biographical information, text and images arising from the Championship including name, voice, image, likeness, biographical material as well as representations of the boats in any media worldwide (being television, print and digital

media), including video footage, for the sole purposes of advertising, promoting, reporting and disseminating information regarding the Melges 32 World Championship and the participants in the regatta. The OA will exercise these rights in its sole discretion or as it may agree with the event sponsors. Unless previously authorized by the OA or IM32CA, participants shall not reproduce, publicly communicate or distribute images of the race in any way or form.

### 27. FURTHER INFORMATION

[International Melges 32 Class Association](#)

[Website: www.melges32.com](#)

[Twitter: Melges32](#)

[Facebook: Melges 32](#)

Joy Dunigan, International Class Administrator

E-mail: [classadmin@melges32.com](mailto:classadmin@melges32.com)

M: +1 (912) 398-5776

F: +1 (912) 756-6728

Egidio Babbi, International Class Measurer

E-mail: [info@egidiobabbi.it](mailto:info@egidiobabbi.it)

Luisa Bambozzi, European Fleet Secretary

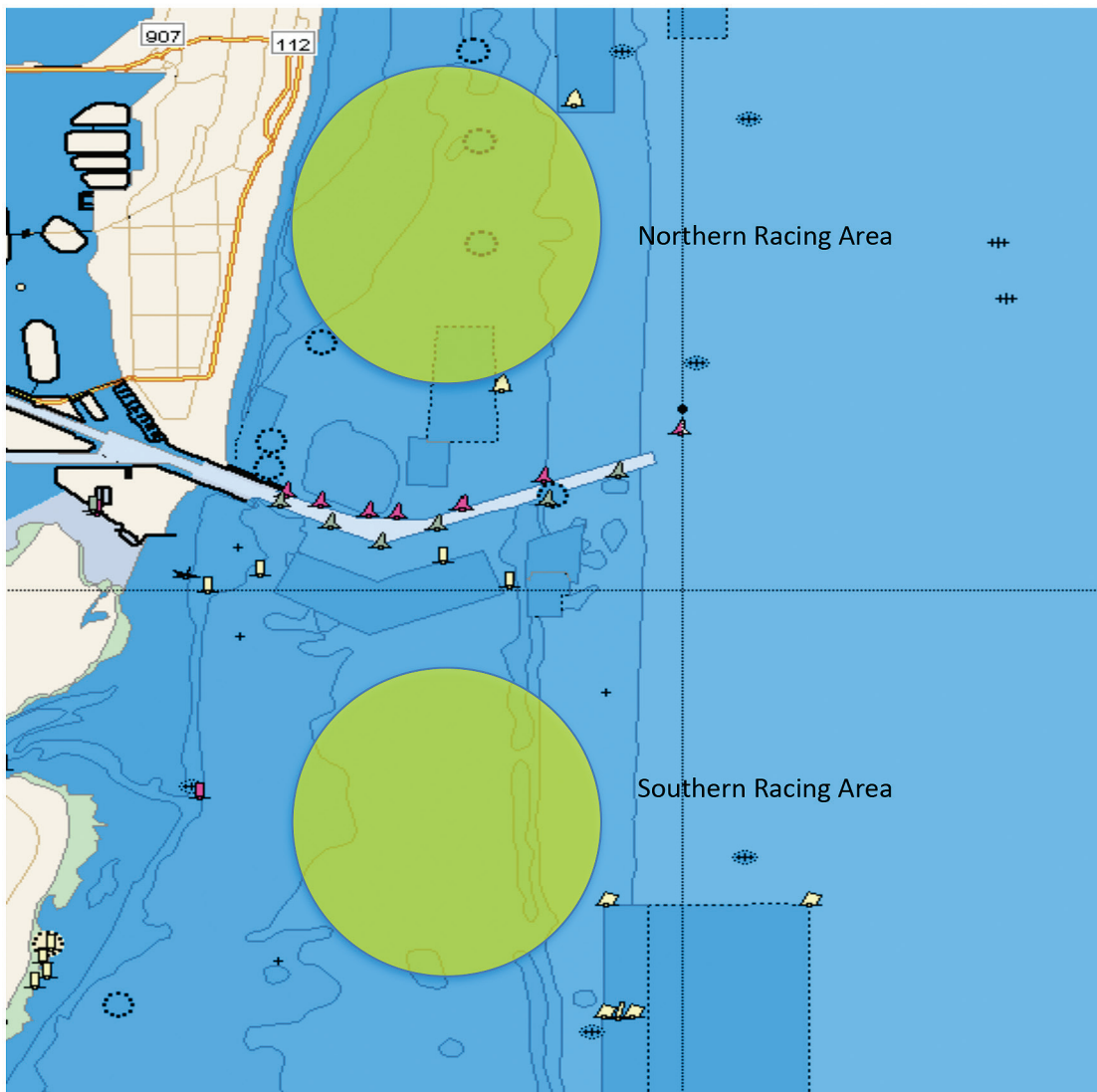
E-mail: [eurofleet@melges32.com](mailto:eurofleet@melges32.com)

Andy Burdick, Melges USA

E-mail: [adny@melges.com](mailto:adny@melges.com)

T: +1 (262) 275-1110

**ATTACHMENT A**  
VENUE - RACING AREAS  
*(Not to be used for navigation)*



**MELGES**  
**USA**

Via Tucidide, 56 (Staz. 32)  
20134 Milano • Italy  
Tel: +39 02 94435078 • Fax: +39 02 94435079  
[melgeseurope.com](http://melgeseurope.com)

**MELGES**  
**EUROPE**

Via Tucidide, 56 (Staz. 32)  
20134 Milano • Italy  
Tel: +39 02 94435078 • Fax: +39 02 94435079  
[melgeseurope.com](http://melgeseurope.com)

Cover photo by Carlo Borlenghi | Borlenghi Studio | BPSE