



2014 Melges 32 Gold Cup

Hosted by Coconut Grove Sailing Club
Event Headquarters at Miami Beach Marina

November 7 - 9, 2014

NOTICE OF RACE

1. VENUE

- 1.1. The International Melges 32 Class Association (IM32CA) is the Organizing Authority (OA) and the Coconut Grove Sailing Club is the host.
- 1.2. In the water dockage for all Melges 32s shall be at Miami Beach Marina.
- 1.3. Websites:
 - International Melges 32 Class Association (melges32.com)
 - Coconut Grove Sailing Club (cgsc.org)
 - Miami Beach Marina (miamibeachmarina.com)
 - Melges USA (melges.com)

2. RULES

- 2.1. The regatta will be governed by the rules as defined in *The Racing Rules of Sailing* (RRS), including US Sailing Prescriptions.
- 2.2. The 'class rules' for the purposes of the definition of 'rules' are the International Melges 32 Class Rules (IM32CR).
- 2.3. All boats must carry minimum equipment as required by the U.S. Coast Guard and the IM32CR.
- 2.4. The protest committee may impose suitable penalties, other than disqualification, for violations of the Class Rules, or other non-part 2 rules. This changes RRS 64.1(a).
- 2.5. The IM32CR, including Section H (Event Rules), will apply except as specifically changed in the Notice of Race (NOR) or in the Sailing Instructions (SIs).
- 2.6. Only the prescriptions of US SAILING to rules 67 and 76.1 as well as rule 61.4 and Appendix R shall apply. These prescriptions will be posted on the regatta website.
- 2.7. RRS 42.3(c) is changed to allow the spinnaker sheet to be trimmed without restriction.

3. ELIGIBILITY AND ENTRY

- 3.1. The 2014 Melges 32 Gold Cup is open to all boats of the International Melges 32 Class Association.
- 3.2. Boats may enter by filling out the appropriate registration form and paying the associated entry fee online at yachtscoring.com.
- 3.3. The entry fee will be \$1,175 (USD) for those entries submitted prior to Friday, October 24, 2014. For entries received thereafter, the entry fee will be \$1,375

(USD). No entries will be accepted after 1700 on November 6, 2014.

4. CLASSIFICATION

- 4.1. The ISAF Classification Code, Regulation 22, will apply. Details of the ISAF Classification Code and information on how to apply can be found on the ISAF website at www.sailing.org/classification.
- 4.2. No later than Friday, 24 October 2014, each entrant shall submit a completed Crew Declaration Form (IM32CR Appendix 3.1) to Joy Dunigan, IM32CA Administrator at classadmin@melges32.com or fax at +1 (912) 756-6728 for verification. The Crew Declaration Form should list all crew, together with their classification and, for Group 1 sailors, their ISAF Sailor ID number and ID Expiration.
- 4.3. All Crew Declaration Forms will be posted on the Melges 32 website, www.melges32.com, upon receipt.
- 4.4. The earliest time a classification protest may be submitted is 0900 EDT hours on Monday, 7 October. The Classification Protest Time Limit under ISAF Regulation 22.1 is 1700 hours on Tuesday, 4 November.
- 4.5. A boat will not be eligible to race until all crew classifications have been checked for compliance.

5. SCHEDULE

Wednesday, 5 November

1400-1800 Registration, Crew Weigh-in at Miami Beach Marina

Thursday, 6 November- PRACTICE DAY

0800-1100 Registration, Crew Weigh-in at Miami Beach Marina

1400-1800 Registration, Crew Weigh-in at Miami Beach Marina

Informal practice races to be held- more information to follow

1800 Skippers' Meeting

Friday, 7 November- RACE DAY ONE

1100 Initial Warning Signal

Après Racing Social (Location TBD)

Saturday, 8 November- RACE DAY TWO

1100 Initial Warning Signal

Après Racing Social (Location TBD)

Sunday, 9 November- RACE DAY THREE

1100 Initial Warning Signal

1430 No initial Warning Signal will be made after this time

Après Racing Social and Awards (Location TBD)

- 5.1. Eight (8) races are scheduled. The Race Committee may conduct as many as three (3) races per day.
- 5.2. The OA and the Race Committee reserve the right to modify the program due to weather conditions or other causes.

6. MEASUREMENT

- 6.1. For measurement, please contact IM32CA Admin, Joy Dunigan via email at classadmin@melges32.com for more information.

7. REPLACEMENT OF CREW

- 7.1. Crew substitutions before and during the events are permitted. A revised crew list must be submitted to Joy Dunigan, IM32CA Administrator and approval received prior to the race to which it applies.
- 7.2. Crew substitutions may weigh-in during the designated Substitute Crew Weigh-In period, from 0800 – 0830 hours, on the first day that they will compete.

8. SAILING INSTRUCTIONS

- 8.1. Sailing Instructions will be provided to entrants on the event web site and at Miami Beach Marina.

9. VENUE

- 9.1. Attachment A shows the location of the racing areas.

10. COURSES

- 10.1. The courses to be sailed will be a windward/leeward configuration as described in the Sailing Instructions.

11. SCORING

- 11.1. The Low Point Scoring System of RRS Appendix A will apply, with the following modification: when fewer than six races have been sailed, a boat's series score will be the total of all her race scores; when six or more races have been sailed, a boat's series score will be the total of her race scores excluding her worst score. This changes rule Appendix A2.
- 11.2. Three (3) races must be completed to constitute a regatta.

12. SUPPORT & COACH BOATS

- 12.1. Restrictions on Support and Coach Boats shall apply as described in Class Rule C.11 OUTSIDE ASSISTANCE.

13. HAUL OUT INSTRUCTIONS

- 13.1. For Event No. 2, boats shall not be hauled-out during the regatta except with and according to the terms of prior written permission of the race committee. All boats shall be launched prior to 1800, Thursday, 27 February 2014.

14. RADIO COMMUNICATION

- 14.1. While on the water, the RC may communicate with competing boats via VHF radio, including starting penalties.

15. TROPHIES

- 15.1. Trophies will be awarded to the top three boats overall.
- 15.2. Additional trophies may be awarded at the discretion of the OA.

16. DISCLAIMER OF LIABILITY

- 16.1. Competitors in this event are participating entirely at their own risk. See RRS 4, Decision to Race. By participating in this event, each competitor agrees to release the race organizers (organizing authority, host yacht club, race committee, protest committee, sponsors, and any others acting in an official capacity for this event) from any and all liability associated with such competitor's participation in this event to the fullest extent permitted by law.

17. MEDIA RIGHTS

17.1. Each participant shall acknowledge that all media and commercial rights belong exclusively to the organizing authority and the IM32CA and shall grant to the OA and IM32CA the unrestricted right and permission to use and publish any biographical information, text and images arising from the event including name, voice, image, likeness, biographical material as well as representations of the boats in any media worldwide (being television, print and digital media), including video footage, for the sole purposes of advertising, promoting, reporting and disseminating information regarding the event and the participants in the regatta. The OA will exercise these rights in its sole discretion or as it may agree with the event sponsors. Participants shall not reproduce, publicly communicate or distribute images of the race in any way or form without previous authorization from the OA or the IM32CA.

18. INSURANCE

18.1. The boat is required to hold adequate third-party insurance, and it is the owner or owner's representative's sole and inescapable responsibility to ensure that the insurance is in place and is adequate.

19. FURTHER INFORMATION

Boat Launching and Boat Storage

For information and arrangements regarding boat launching and storage contact the IM32CA at +1.912.398.5776.

Dockage

Miami Beach Marina- +1.305.673.6000

International Class Administrator

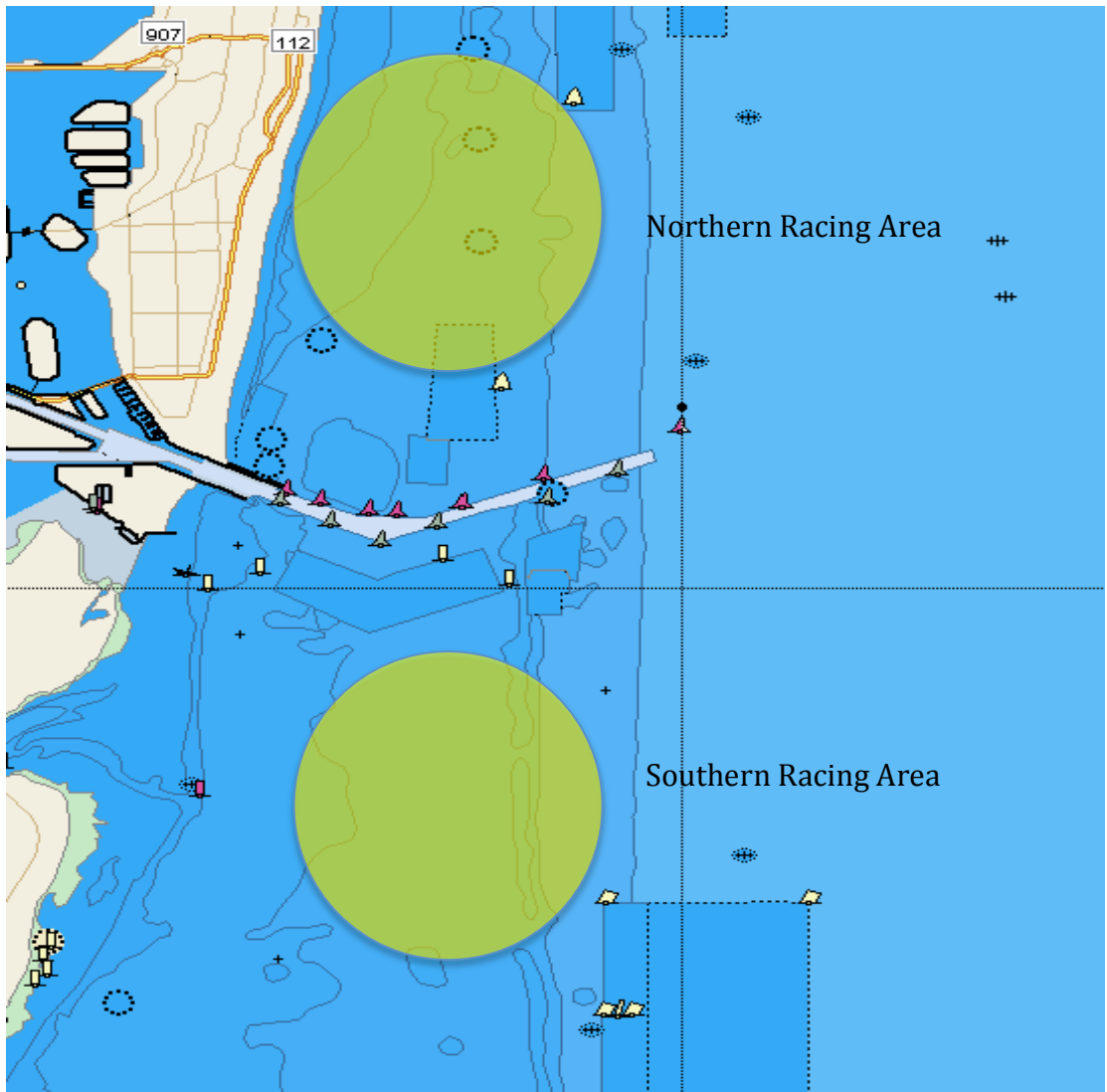
Joy Dunigan- +1.912.398.5776 // classadmin@melges32.com

Principal Race Officer

Anderson Reggio- +1.267.304.1873 // andersonreggio@gmail.com

ATTACHMENT A

VENUE- Racing Areas



Not to be used for navigation