



2021 Bayfield Race Week

July 4 - July 9, 2021

Wayzata Yacht Club (WYC) - Apostle Islands Station (AIS)
Bayfield Wisconsin, USA

SAILING INSTRUCTIONS

The organizing authority of the 2021 Bayfield Race Week is the Apostle Islands Station /Wayzata Yacht Club, Inc. (AIS/WYC).

The notation [NP] in a rule in the Notice of Races means that breaches in this rule will not be grounds for a protest by a boat. This changes RRS 60.1 (a).

1. RULES

- 1.1. The series will be governed by the rules as defined in *The Racing Rules of Sailing* (RRS).
- 1.2. The Racing Rules will be changed as follows:
 - 1.2.1. Any use of a waypoint, defined by latitude and longitude coordinates, that the course requires a boat to leave on a specified side shall be in accordance with World Sailing (WS) Appendix WP. This appendix changes RRS 18 and RRS 28 and adds a definition of a waypoint. WS Appendix WP can be found at the relevant Yachtscore.com event page.
 - 1.2.2. [DP] RRS Appendix G will be enforced per RRS 77.

2. CHANGES TO SAILING INSTRUCTIONS

- 2.1. Changes to the SIs will be posted on the Official Notice Board at the relevant Yachtscore.com event page by 0900 each day. Changes to the SIs will also be announced approximately two hours prior to the warning signal for the first race of the day by the Race Committee (RC) on VHF Radio (VHF), SI 3.2. Any change to the schedule of races shall be posted by 2000 on the day before it will take effect except as defined in SI 6.2 and SI 6.3.
- 2.2. In accordance with RRS 90.2(c) the RC may alter the SI on the water by flying Code Flag L, hailing the fleets, and announcing the change on VHF.
- 2.3. Competitors are expected to obtain all relevant race documents on their own.

3. COMMUNICATIONS WITH COMPETITORS

- 3.1. The online Official Notice Board (ONB) is located at the relevant Yachtscore.com event page.
- 3.2. The race office and is located at the Bayfield City Pavilion, 2 East Front Street, at the end of Rittenhouse Avenue. The Unofficial Notice Board (UNB) is located at the entrance doors on the south side of the building.
- 3.3. On the water, the RC intends to monitor and communicate with competitors on the following VHF radio channels:
 - 3.3.1. Circle 1 will use VHF channel 72.
 - 3.3.2. Circle 2 will use VHF channel 68.
- 3.4. The following communications may be made by the RC on VHF:



- 3.4.1. A courtesy hail will be made each day at 0900 on VHF 72. This hail will contain relevant racing information such as the intended location of the Starting Area for each Circle, as well as any expected Postponement on Shore due to weather.
- 3.4.2. The RC may report all visual signals displayed on their respective Circle's, and report OCS boats after the start on the VHF channel. Failure to hear her number, failure of her to hear such a hail, or the order in which boats are hailed shall not be grounds for a request for redress. This changes RRS 62.1(a).
- 3.5. [DP] While racing from the first warning signal until the end of the last race of the day, except in an emergency or when notifying the RC of a retirement or withdrawal, a boat shall not make voice or data transmissions and shall not receive voice or data communication, that are not available to all boats.
- 3.6. [DP] Any boat using a sail with an alternate sail number shall report the proper sail number to the RC in writing before 0900 at the Apostle Island Marina dock office, or via VHF hail no later than 30-minutes prior to the warning signal for the first race of the day.

4. CODE OF CONDUCT

- 4.1. [DP] Competitors and support persons shall comply with reasonable requests from race officials.
- 4.2. [DP] The registered competitor shall be responsible for conduct of the entire crew before, during, and after the Race while at Race related locations for Race related events. See RRS 2 and 69.

5. SIGNALS MADE ASHORE

- 5.1. Signals made ashore will be displayed on the RC Signal Boat at dock at the Blackhawk Boat Yard located at East Dock Road, Bayfield, WI 54814.
- 5.2. When flag AP is displayed ashore, '1 minute' is replaced with 'not less than 1 hour' in the Race Signal AP. This changes RRS Race Signal AP.

6. SCHEDULE OF RACES

- 6.1. Dates of racing

Fleet	Race Dates	Number of Races per Day
Buoy	July 5 – July 9, 2021	Up to 3 races
MD and JAM	July 5 – July 9, 2021	Up to 2 races

- 6.2. The scheduled time of the first warning signal for the first race each day will be 1100 hrs. Postponement on shore may be announced via VHF at 0900 hrs. each day.
- 6.3. The five planned days of racing are intended to include:
 - 6.3.1. The WYC/AIS Memorial Cup is intended to be a 1-day pursuit start race for all fleets. This race honors the memory of those who have passed away who have made significant contributions to Bayfield Race Week. This shall be a pursuit race, with each yacht's start time provided at the competitors' meeting or during the social the night before the event and on the relevant Yachtscoring.com event page.
 - 6.3.2. There is intended to be a 1-day Mid-Distance race for all fleets. This race will serve to bring all competitors together on one common course, the exact length of which may be adjusted for some fleets.
 - 6.3.3. There is intended to be three days of racing within the established fleet designations.



- 6.4. On the last scheduled day of racing no warning signal will be made after 1430 hrs.
- 6.5. Flag A displayed, with no sound, while boats are finishing means, ‘No more racing today’.

7. CLASS FLAGS

- 7.1. Classes will be defined and posted on the ONB and the UNB prior to the mandatory competitors’ meeting.
- 7.2. Class flags for boats will be provided during registration and/or at the mandatory competitors’ meeting.
- 7.3. [DP] Class flags shall be flown from the backstay. Any boats without a backstay shall affix the class flag to the end of their boom.

8. RACING AREA

- 8.1. Racing may be held anywhere in, near or around the Apostle Islands. SI Appendix A shows the partial area in which racing may be held.
- 8.2. Racing Circles:
 - 8.2.1. Buoy A will race on Circle 2 when racing Windward/Leeward courses. The initial starting area will be announced at the 0900 VHF courtesy hail. When racing the mid-distance course or Memorial Cup, Buoy A will race on Circle 1.
 - 8.2.2. Buoy B, MD, and JAM will race on Circle 1 for all races.

9. COURSES

- 9.1. Buoy Fleets - Course diagrams are included in Appendix B.
 - 9.1.1. Courses will be Windward/Leeward with 2, 4, or 6 legs.
 - 9.1.2. Windward mark is to be rounded to port.
 - 9.1.3. A leeward mark (one mark) or leeward gate (two marks) may be used. The location of the leeward mark or gate will be approximately 0.2 nm to windward of the starting line. If one of the leeward gate marks is missing, boats shall round the existing leeward mark to port.
 - 9.1.4. A windward offset mark may be laid. Windward offset marks will be located to port of the windward mark, approximately perpendicular to the course axis. The windward offset mark is rounded to port. If no offset mark is in place, the windward mark shall be rounded to port.
 - 9.1.5. Marks for the Buoy Courses shall be designated as follows:

Mark	Description	Mark	Description
S	Start	L	Leeward
W	Windward	F	Finish
G	Gate	O	Offset

- 9.2. MD and JAM Fleets - Appendix A shows the approximate location of the marks that might be used to define the course for the MD and JAM fleets.
- 9.3. Buoy Fleets, at the discretion of the RC, may sail a windward leeward course as described in SI 9.1 or a mid-distance course as described in SI 9.2.
- 9.4. Courses will be posted on a display board on the RC Signal boat. They will show the course, the order in which the marks are to be passed, and the side on which each mark is to be passed. The RC will also announce the course on VHF.



- 9.5. The approximate compass bearing and distance from the starting line to Windward Mark will be displayed from RC Signal Boat.
- 9.6. Memorial Cup: course may use any combination of marks to provide a course of the desired distance.
- 9.7. The one-day Mid-Distance Race for all fleets may use any combination of marks to provide a course of the desired distance.

10. MARKS

- 10.1. Marks may be:
 - 10.1.1. Temporary buoys (which may be red, orange, white, yellow, or green and be in the form of cylinders, spheres, tetrahedrons, or robotic marks),
 - 10.1.2. Islands,
 - 10.1.3. Government navigation marks/buoys, and/or
 - 10.1.4. Virtual Waypoints as defined by SI 1.2.1.
- 10.2. All boats shall obey all government navigation marks/buoys while racing, except if the navigation mark/buoy is a mark of the course, when such navigation mark/buoy shall be rounded pursuant to RC instructions.
- 10.3. New marks, as provided in SI 12 are yellow cylinders.

11. THE START

- 11.1. Races will be started using RRS 26. The warning signal of each succeeding class may be made with the start signal of the preceding class.
- 11.2. The start order will be announced at the competitors' meeting and posted to the ONB and UNB.
- 11.3. The starting line will be between a staff displaying an orange flag on an RC Signal Boat and course side of the starting mark.
- 11.4. [DP] Boats whose warning signal has not been made shall avoid the starting area during the starting sequence for other races.
- 11.5. [DP] A boat shall start within 5 minutes of her starting signal.

12. CHANGE OF THE NEXT LEG OF THE COURSE

- 12.1. To change the next leg of the course, the RC will lay a new mark and remove the original mark as soon as practicable. When in a subsequent change a new mark is replaced, it will be replaced by an original mark.
- 12.2. Offset marks will not be set on a changed windward leg of the course.
- 12.3. The RC may broadcast a change on designated VHF channel as a courtesy.
- 12.4. The RC may make minor changes to the orientation of the course, approximately 5 degrees or less, without signaling a change of course. This changes RRS 33(a).

13. THE FINISH

- 13.1. Buoy Fleets:
 - 13.1.1. The Finish will be between a staff displaying a Blue flag on a RC Signal Boat and the course side of the mark nearest to the RC Signal Boat, unless an alternative location is announced with the course description.
- 13.2. MD/JAM Fleet:
 - 13.2.1. The finish will be between the Blue Flag located at the Bayfield Fishing Dock and the course side of a buoy approximately 200 yards from the pier, unless an alternative location is announced with the course description.



- 13.3. Memorial Cup will be finished at the Fishing Dock between the Blue Flag located at the Bayfield Fishing Dock and the course side of a buoy approximately 200 yards from the pier, unless an alternative location is announced with the course description
- 13.4. [DP] At the discretion of the RC, a race may be finished at a waypoint. A waypoint is defined by latitude and longitude coordinates. When finishing at a waypoint, the finish line is a line through the waypoint at a 90-degree angle to the last leg and of the shortest practical length. Boats shall log their GPS finish time. Boats finishing shall also log the sail number of the boat ahead and behind their finish position if available.
- 13.5. [DP] If the RC is absent when a boat finishes, the boat shall report their finishing time, and their position in relation to nearby boats, to the RC at the first reasonable opportunity.

14. **PENALTY SYSTEM**

- 14.1. For all classes, RRS 44.1 is changed so that the Two-Turns Penalty is replaced by the One-Turn Penalty in accordance with RRS Appendix V1.
- 14.2. RRS Appendix T – Arbitration will be in effect for the series.

15. **TIME LIMITS**

- 15.1. Buoy Fleet:
 - 15.1.1. The time limit for the first boat of a class to finish each buoy race shall be 3 hours from their start signal.
 - 15.1.2. If the Buoy Fleet is racing a mid-distance course, the time limit shall be 4 hours.
 - 15.1.3. Any boat within the class not finishing a race within 1 hour after the first boat of the class finishes shall be scored Time Limit Expired (TLE). This changes RRS 35, A4 and A5.
- 15.2. MD/JAM Fleets:
 - 15.2.1. For all MD/JAM classes the time limit for the first boat to finish shall be 4 hours from their start signal.
 - 15.2.1.1. Any MD boat not finishing a race within 90-minutes after the first boat in their MD class finishes shall be scored TLE. This changes RRS 35, A4 and A5.
 - 15.2.1.2. Any JAM boat not finishing a race within 120-minutes after the first boat in the JAM class finishes shall be scored TLE. This changes RRS 35, A4 and A5.
- 15.3. Memorial Cup: Any boat not finishing within 90-minutes after the first boat to finish shall be scored TLE. This changes RRS 35, A4 and A5.

16. **HEARING REQUESTS**

- 16.1. Protest Time Limits
 - 16.1.1. The protest time limit for all fleets shall be 90 minutes after the last boat in their respective fleet has finished the last race of the day, or the RC signals no more racing today, whichever is later.
 - 16.1.2. The protest time limit for the Memorial Cup shall be 90 minutes after the last boat has finished the race.
 - 16.1.3. The protest time limit will be posted on the ONB and the UNB.
- 16.2. Protest forms will be available at the protest table located on the patio on the east end of the Pavilion, or from a member of the RC, or can be downloaded from YachtScoring.com.
- 16.3. Notices will be posted on the ONB and on the UNB no later than 30 minutes after the protest time limit to inform competitors of hearings in which they are parties, or named as witnesses.



Where reasonably possible, hearings will be scheduled for the day the protests were received and in the order the protests were received. In unusual circumstances and with sufficient notice, the Protest Committee may schedule a hearing for a different day, time or order.

17. SCORING

- 17.1. A boat's corrected time shall be determined using the PHRF Time on Distance calculation.
 - 17.1.1. Course length for handicapping purposes will be determined using:
 - 17.1.1.1. Recorded mark coordinates as determined by the PRO.
 - 17.1.1.2. Fixed mark coordinates as published in the current USCG Light List – Volume VII.
- 17.2. Boats failing to finish within their time limit, and not subsequently retiring, penalized or given redress, will be scored TLE without a hearing. A boat scored TLE shall be scored points for finishing place one more than the points scored by the last boat the finished within the time limit. This changes RRS 35, A5.1 and A5.2, and A10.
- 17.3. In accordance with RRS Appendix A2.1, no score shall be excluded..
- 17.4. The score of each boat's Memorial Cup finishing position, within its respective class, shall also be included within their respective class for overall scoring of Bayfield Race Week.
- 17.5. One race is required to be completed to constitute a Regatta.

18. SAFETY REGULATIONS

- 18.1. [NP] [DP] Each boat shall comply with the following:
 - 18.1.1. Each boat shall comply with all USCG and other applicable governmental laws, rules and regulations.
 - 18.1.2. All boats shall have a working motor appropriate for the size of the boat.
 - 18.1.3. Each boat shall have a functioning VHF marine-grade radio while racing.
 - 18.1.4. Each boat shall have a functioning GPS receiver capable of displaying a boat's latitude and longitude position while racing.
 - 18.1.5. Personal Flotation Devices
 - 18.1.5.1. At the Start and Finish of each race, each person on board each boat is required to wear a USCG or ISO approved personal flotation device (PFD). The use of an ISO approved PFD does not negate the USCG requirement that each vessel shall have at least one (1) USCG approved Type III or V life jacket for each person on board. Belt pack style PFD's are not allowed.
 - 18.1.5.2. For any boat with only two (2) individuals on board, both individuals shall wear a life jacket at all times while afloat, except briefly while changing or adjusting clothing or personal equipment.
- 18.2. A boat that retires from a race shall notify the RC as soon as possible. RC will monitor VHF.
- 18.3. Abandonment Due to Weather
 - 18.3.1. Races for individual fleets may be abandoned or postponed when the 5-minute mean wind speed exceeds 24 knots or wind gusts exceed 30 knots, as determined by RC Principal Race Officer ('PRO'). If these conditions exist 90 minutes before the scheduled warning signal, signals may be made ashore. If these conditions develop less than 90 minutes prior to the scheduled warning signal start, signals may be made by RC Signal Boat.
 - 18.3.2. Should the 5-minute mean wind speed exceed 20 knots but not 24 knots, RC PRO may change the course for some or all fleets to a mid-distance course, as determined by the PRO (with input from the OA at PRO's discretion).



19. EQUIPMENT AND MEASUREMENT CHECKS

- 19.1. A boat or equipment may be inspected at any time for compliance with the class rules, Notice of Race, and Sailing Instructions.

20. HAUL-OUT RESTRICTIONS

- 20.1. [DP] Boats shall not be hauled out during the event except with and according to the terms of prior written permission of the RC.

21. DIVING EQUIPMENT AND PLASTIC POOLS

- 21.1. [DP] Underwater breathing apparatus and plastic pools or their equivalent shall not be used around keelboats between the preparatory signal of the first race and the end of the last race of the event.
- 21.2. [DP] Keelboats shall not be cleaned below the waterline by any means during the event.

22. RISK STATEMENT, DISCLAIMER OF LIABILITY; WAIVERS AND RELEASE

- 22.1. “**Event Organizer(s)**” means AIS/WYC Station, Inc. (“AIS”), Wayzata Yacht Club (“WYC”), Organizing Authority, Race Committee, Principal Race Officer (PRO), race officers, Protest Committee, judges, competition managers, fleets, sponsors, promoters, advertisers, licensors, venue providers, supporting organizations, host clubs and venue provider(s) (and each of their respective insurers, affiliates, shareholders, officers, directors, board members, personnel, supervisors, managers, employees, staff, licensees, contractors, officials, members, guests, volunteers, agents, representatives and all other persons or entities involved or associated with an **Event(s)**).
- 22.2. “**Event(s)**” includes without limitation race(s), series, cup(s), regatta(s), social(s), party(ies), and/or associated or related activity(ies) or event(s) sponsored, promoted, scheduled, conducted, or operated by **Event Organizer(s)**.
- 22.3. RRS *Rule 3*, “Decision to Race”, states: “The responsibility for a boat’s decision to participate in a race or to continue *racing* is hers alone.”
- 22.4. Each person (including without limitation competitor, *support persons*, volunteer, and/or spectator) attends and/or participates in **Event(s)** entirely at his/her own risk.
- 22.5. **ACKNOWLEDGEMENT OF INJURIES**. By attending or participating in **Event(s)**, each person knowingly, willingly, and voluntarily acknowledges and agrees that sailing, sailboat racing and/or associated **Event(s)** are potentially dangerous activities with inherent dangers, hazards and risks of injury and/or death [including without limitation hypothermia; drowning; personal injury; pain and suffering; trauma; bodily injury (including broken bones, head or neck injuries, and serious bodily injury); sickness, disease or illness (including without limitation **COVID 19**, virus and other infectious or communicable diseases); paralysis; dismemberment, disability and permanent disability; and/or loss or damage to boat, vehicle or personal property] (collectively, “**Injuries**”).
- 22.6. **ACKNOWLEDGMENT OF DANGERS**. Dangers, hazards and risks that may result in **Injuries** include without limitation: close physical proximity or contact with crew, skippers, other persons and/or other boats; weather, lake conditions or other acts of God (including without limitation cold water, gusts, downburst, straight line winds, strong winds, rough waves, sudden changes in weather, storms, etc.); boat or equipment failure; poor seamanship or boat handling errors by participant, participant’s boat or other boats; loss of balance on an unstable platform; fatigue; falling overboard; exposure to extreme conditions and circumstances; facilities issues and/or premises conditions; inadequate (or failure by) protective equipment, safety equipment, or safety measures; accidents, contact or collision with other participants or natural or



manmade objects; contact with (or actions or inactions of) others (including without limitation competitors, spectators, race officers, and others on the lake); receiving/giving assistance, aid, care, emergency care, advice, rescue, first aid, treatment or emergency medical services; situations beyond the control of the participants or **Event Organizer(s)**; act, error, omission or alleged negligence by participant or other participants; act, error, omission or alleged negligence or misconduct of attendees, spectators, **Event Organizer(s)**, or other boats or traffic on the water; AND/OR OTHER UNDEFINED, NOT READILY FORESEEABLE AND PRESENTLY UNKNOWN DANGERS, HAZARDS AND RISKS. The foregoing dangers, hazards, and risks are collectively “**Dangers**”.

- 22.7. **ASSUMPTION OF RISK**. Each participant understands the **Injuries** may be caused in whole or in part or result directly or indirectly from **Dangers** or from the negligence of the actions, inactions, errors or omissions of participant, **Event Organizers**, or others. Each participant knowingly, willingly, and voluntarily assumes the risk of all such **Injuries** and **Damages**, whether known or unknown, or foreseen or unforeseeable. Each participant agrees to be responsible for damages, liabilities, losses, or expenses that are incurred by him/her as a result of his/her participation in any **Event(s)**. Participant also agree to be responsible for any **Injury** or **Danger** caused by participant at any **Event(s)**.
- 22.8. **DISCLAIMER OF LIABILITY. EVENT ORGANIZER(S) WILL NOT BE RESPONSIBLE OR LIABLE FOR ANY PRESENT AND FUTURE DEMANDS, ACTIONS, SUITS, AND CLAIMS, WHETHER KNOWN OR UNKNOWN, IN LAW OR IN EQUITY, IN CONTRACT, IN TORT, OR UNDER COMMON LAW, OR UNDER ANY STATE OR FEDERAL STATUTE OR OTHERWISE, (COLLECTIVELY, “CLAIM(S)”), INJURY(IES), DAMAGES, LOSSES, LIABILITY, ACCIDENT, COST, FEE OR EXPENSE (INCLUDING COURT COSTS AND REASONABLE ATTORNEYS FEES) OF ANY KIND OR NATURE (COLLECTIVELY, “DAMAGES”) TO ANY ATTENDEE, PARTICIPANT, RELEASORS (DEFINED BELOW), PROPERTY OR BOAT THAT MAY BE SUFFERED, BASED UPON, ARISING OUT OF, LOGICALLY, OR CAUSALLY RELATED TO, OR IN ANY WAY CONNECTED WITH PARTICIPATION IN OR PRESENCE AT ANY EVENT(S) (INCLUDING WITHOUT LIMITATION INJURIES, DAMAGES OR CLAIMS THAT MAY BE CAUSED BY OR ARISE OUT OF, IN WHOLE OR IN PART, BY NEGLIGENCE OR FAULT OF EVENT ORGANIZER(S)).**
- 22.9. **WAIVERS AND RELEASE OF LIABILITY**
- 22.9.1. IN CONSIDERATION OF ATTENDANCE OR PARTICIPATING IN ANY **EVENT(S)**, TO THE FULLEST EXTENT PERMITTED BY LAW, EACH PARTICIPANT (FOR THEMSELF AND ON BEHALF OF THEIR SPOUSE, EXECUTORS, ADMINISTRATORS, HEIRS, NEXT OF KIN, LEGAL AND PERSONAL REPRESENTATIVES, AND SUCCESSORS AND ASSIGNS, AND ANYONE ELSE WHO MAY SUE ON BEHALF OF PARTICIPANT) (COLLECTIVELY, “**RELEASORS**”) HEREBY **FOREVER WAIVES, DISCHARGES, AND RELEASES ALL CLAIMS AGAINST EVENT ORGANIZERS FOR ANY INJURIES, DANGERS, AND DAMAGES OF ANY KIND OR NATURE THAT PARTICIPANT OR RELEASORS MIGHT SUFFER, BASED UPON, ARISING OUT OF, LOGICALLY, OR CAUSALLY RELATED TO, RESULT FROM, OR IN ANY WAY CONNECTED WITH PARTICIPATION IN OR PRESENCE AT ANY EVENT(S) (INCLUDING WITHOUT LIMITATION INJURIES, DAMAGES OR CLAIMS THAT MAY BE CAUSED BY OR ARISE OUT OF, IN WHOLE OR IN PART, THE NEGLIGENCE OR FAULT OF EVENT ORGANIZER(S)).**



22.9.2. WITHOUT LIMITING THE FOREGOING, PARTICIPANT FURTHER WAIVES, DISCHARGES AND RELEASES ALL **EVENT ORGANIZERS** FROM ALL **CLAIMS, INJURIES, DANGERS, AND DAMAGES** WHATSOEVER ON ACCOUNT OF **EVENT ORGANIZER(S)** AUTHORIZING (OR GIVING) ASSISTANCE, AID, CARE, EMERGENCY CARE, ADVICE, RESCUE, FIRST AID, TREATMENT OR EMERGENCY MEDICAL SERVICES (INCLUDING WITHOUT LIMITATION **INJURIES, DAMAGES OR CLAIMS** THAT MAY BE CAUSED BY OR ARISE OUT OF, IN WHOLE OR IN PART, THE NEGLIGENCE OR FAULT OF **EVENT ORGANIZER(S)**).

15.10 **AGREE NOT TO SUE**. ALL ATTENDEES, PARTICIPANTS AND **RELEASORS** WILL NOT SUE, OR MAKE ANY **CLAIM(S)** AGAINST, ANY **EVENT ORGANIZER** (AND SURRENDER ANY RIGHT ATTENDEE, PARTICIPANT OR **RELEASORS** MAY HAVE OR MAY LATER ACCRUE TO RECOVER, THROUGH A COURT OF LAW OR BY OTHER MEANS, COMPENSATION) FOR ANY **INJURIES, DANGERS, OR DAMAGES** BASED UPON, ARISING OUT OF, LOGICALLY OR CAUSALLY RELATED TO, OR IN ANY WAY CONNECTED WITH PARTICIPATION IN OR PRESENCE AT ANY **EVENT(S)** (INCLUDING WITHOUT LIMITATION SUITS, **CLAIMS, INJURIES OR DAMAGES** THAT MAY ARISE OUT OF NEGLIGENCE OR FAULT OF **EVENT ORGANIZER(S)**).

15.11 **CHILDREN & MINORS**. WHERE A MINOR OR CHILD PARTICIPATES IN ANY **EVENT(S)**, ALL PARENTS AND GUARDIANS HEREBY ACCEPT AND AGREE TO THE TERMS AND CONDITIONS OF THE FOREGOING **ACKNOWLEDGMENTS, ASSUMPTION OF RISK, DISCLAIMER OF LIABILITY, WAIVERS AND RELEASE OF LIABILITY**, AND **AGREE NOT TO SUE** ON BEHALF OF, AND FOR, THEIR CHILD(REN) AND/OR MINOR(S).

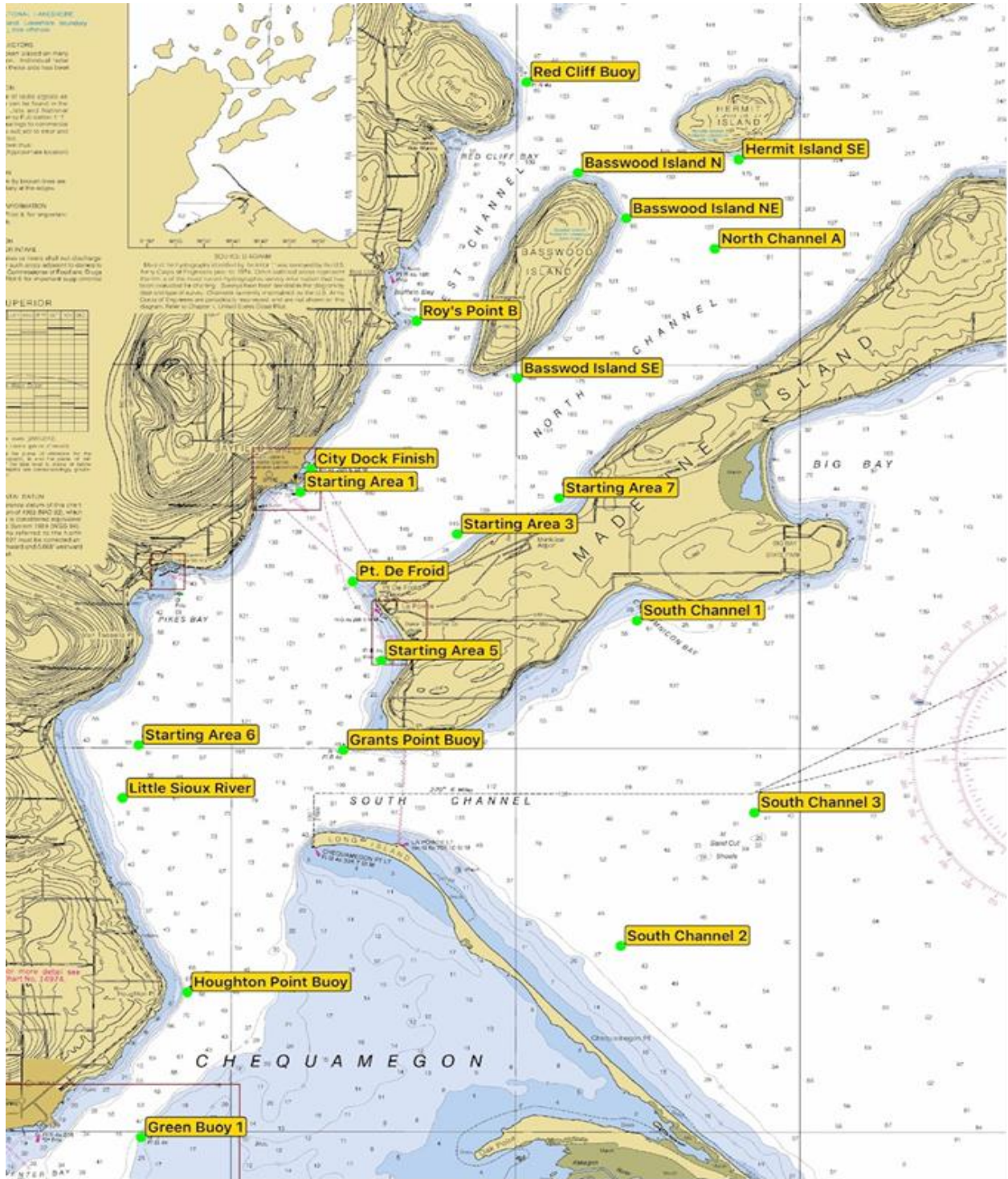
23. **INSURANCE**

23.1. Each participating boat shall be insured with valid third-party liability insurance with a minimum coverage of \$300,000 for bodily injury and minimum coverage of \$100,000 for property damage per incident.

23.2. Each boat shall present proof of insurance upon OA's request.



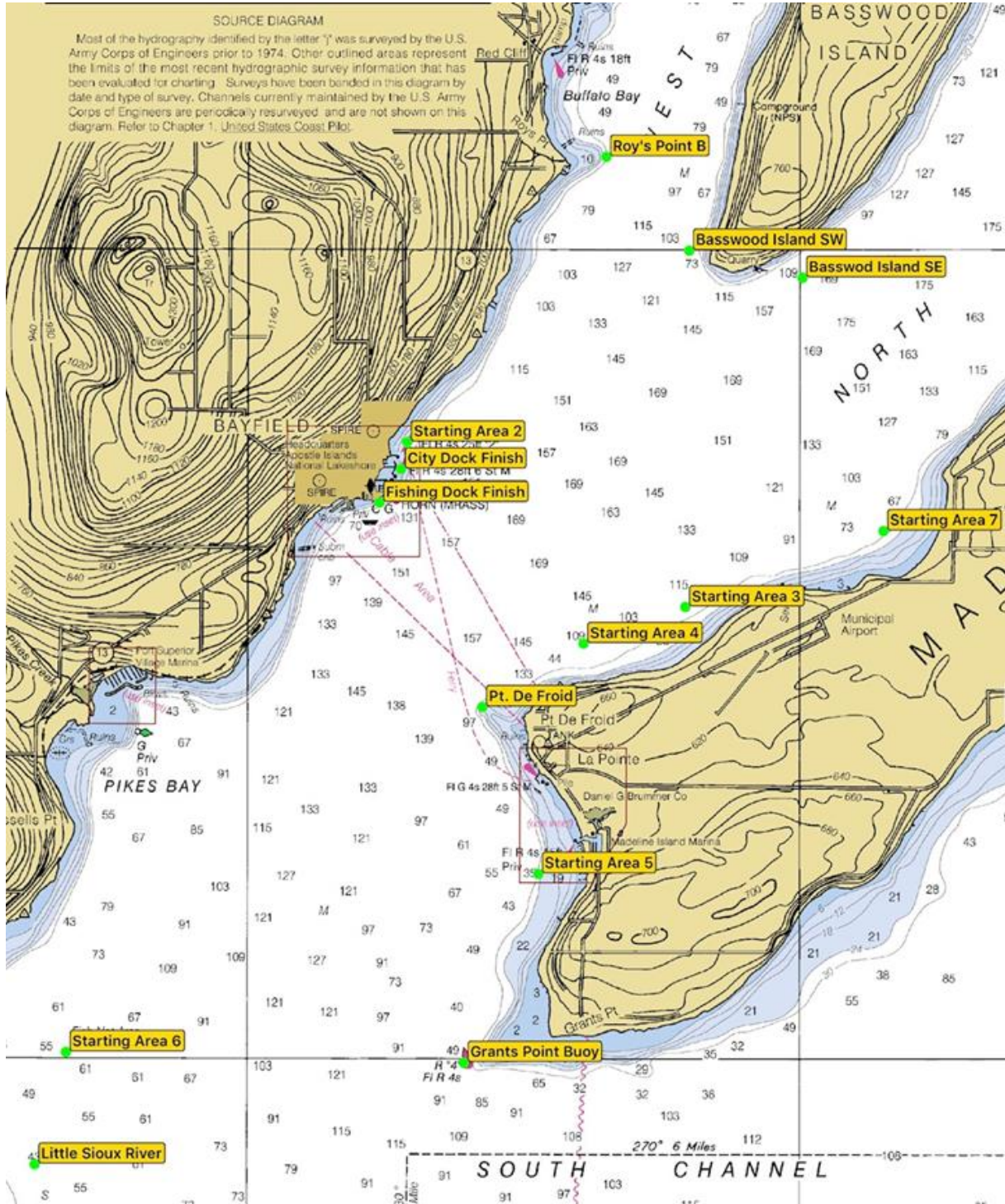
Appendix A – Racing Area



Note: All Mark locations are approximate.



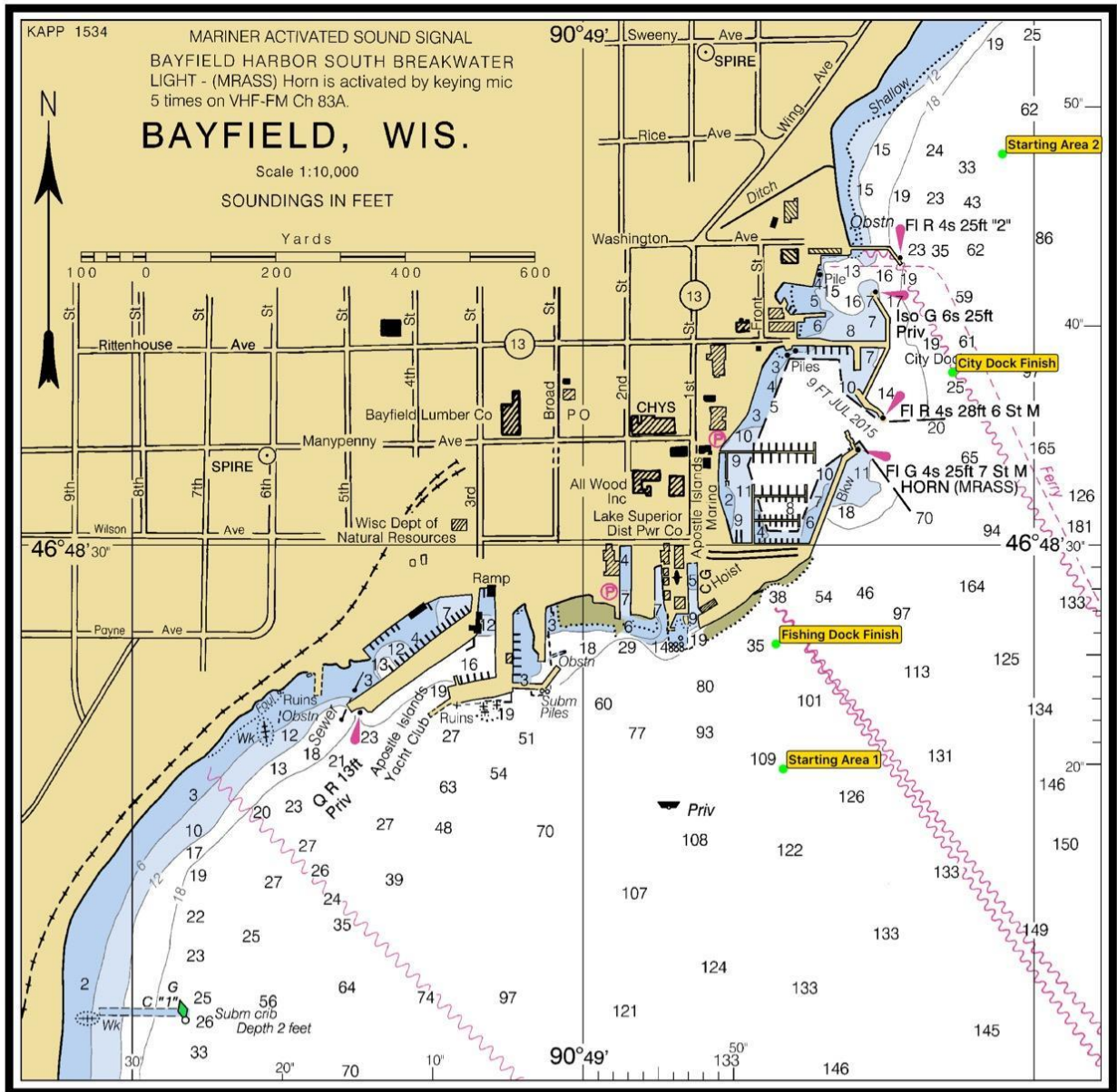
Appendix A – Racing Area



Note: All Mark locations are approximate.



Appendix A – Racing Area



Note: All Mark locations are approximate.



Appendix A - Waypoint Coordinates

Starting Areas		DMS		DMM	
Waypoint	Description	Latitude	Longitude	Latitude	Longitude
SA1	Starting Area 1 off USCG Station	46°48'19.8"N	90°48'46.7"W	46°48.330'N	90°48.778'W
SA2	Starting Area 2 - N of Bayfield Ferry Dock	46°48'47.9"N	90°48'32.1"W	46°48.798'N	90°48.535'W
SA3	Starting Area 3 off Madeline Island Airport	46°47'46.9"N	90°46'00.9"W	46°47.782'N	90°46.014'W
SA4	Starting Area 4 off Pt. De Froid	46°47'33.3"N	90°46'56.2"W	46°47.555'N	90°46.936'W
SA5	Starting Area 5 off of La Pointe	46°46'08.0"N	90°47'20.7"W	46°46.133'N	90°47.344'W
SA6	Starting Area 6 - South of Pikes Bay	46°45'01.7"N	90°51'37.1"W	46°45.029'N	90°51.618'W
SA7	Starting Area 7 - Sunset Bay	46°48'29.2"N	90°43'54.5"W	46°48.486'N	90°44.909'W
Finish Areas		DMS		DMM	
Waypoint	Description	Latitude	Longitude	Latitude	Longitude
CDF	City Dock Finish	46°48'37.9"N	90°48'35.4"W	46°48.632'N	90°48.590'W
FDF	Fishing Dock Finish	46°48'25.5"N	90°48'47.1"W	46°48.425'N	90°48.786'W
Fixed Government Marks		DMS		DMM	
Waypoint	Description	Latitude	Longitude	Latitude	Longitude
GP	Grants Point Buoy	46°44'58.0"N	90°48'01.0"W	46°44.967'N	90°48.017'W
GB1	Green Buoy 1 - South of Houghton Point	46°39'54.9"N	90°51'33.5"W	46°39.915'N	90°51.558'W
HPB	Houghton Point Buoy	46°41'48.4"N	90°50'45.2"W	46°41.807'N	90°50.754'W
RCB	Red Cliff Bouy	46°53'40.5"N	90°44'47.5"W	46°53.675'N	90°44.791'W
Drop Marks		DMS		DMM	
Waypoint	Description	Latitude	Longitude	Latitude	Longitude
BSE	Basswood Island SE	46°49'49.0"N	90°44'57.3"W	46°49.816'N	90°44.954'W
BS	Basswood Island South Tip	46°49'47.0"N	90°45'41.0"W	46°49.784'N	90°45.683'W
BSW	Basswood Island SW	46°49'59.0"N	90°45'58.8"W	46°49.983'N	90°45.980'W
BNNW	Basswood Island NNW	46°52'22.2"N	90°44'20.7"W	46°52.370'N	90°44.344'W
BN	Basswood Island N	46°52'29.6"N	90°43'53.1"W	46°52.494'N	90°43.886'W
BNNE	Basswood Island NNE	46°52'20.4"N	90°43'18.1"W	46°52.340'N	90°43.301'W
BNE	Basswood Island NE	46°51'53.9"N	90°43'02.0"W	46°51.898'N	90°43.033'W
HSE	Hermit Island SE	46°52'40.0"N	90°41'03.2"W	46°52.666'N	90°41.054'W
LSR	Little Sioux River	46°44'20.1"N	90°51'54.0"W	46°44.335'N	90°51.900'W
NCA	North Channel A	46°51'30.0"N	90°41'28.4"W	46°51.500'N	90°41.474'W
PDF	Point De Froid	46°47'09.8"N	90°47'51.2"W	46°47.163'N	90°47.853'W
RPB	Roy's Point B	46°50'33.7"N	90°46'43.9"W	46°50.562'N	90°46.732'W
SC1	South Channel 1 - Chebomnicon Bay	46°46'39.3"N	90°42'50.9"W	46°46.656'N	90°42.848'W
SC2	South Channel 2 - N of Chequamegon Pt.	46°42'24.9"N	90°43'08.0"W	46°42.415'N	90°43.133'W
SC3	South Channel 3 - 5 nm east of Grants Pt.	46°44'09.1"N	90°40'46.9"W	46°44.152'N	90°40.782'W

Note: All Mark locations are approximate.



Appendix B – Buoy Course Descriptions

<p>Course Examples:</p> <ul style="list-style-type: none"> • W/L 2 = S-W-F • W/L 4 = S-W-L-W-F • W/L 6 = S-W-L-W-L-W-F • W/L 2 O = S-W-O-F (with Offset) • W/L 4 G = S-W-G-W-F (with Gate) • W/L 4 O G = S-W-O-G-W-O-F (with Offset & Gate) 	<p>Course Examples:</p> <ul style="list-style-type: none"> • W/L 6 G = S-W-L-W-L-W-F (with Gate) • W/L 6 O = S-W-L-W-L-W-F (with Offset) • W/L 6 O G = S-W-L-W-L-W-F (with Offset & Gate) 	

Note: Course diagrams and examples do not illustrate all potential course configurations. Any Buoy Course may be changed to finish at the Bayfield Fishing Dock