



CHARLESTON APRIL 8-11
RACE WEEK 2021



2021 Charleston Race Week

Sailing Instructions

For Inshore Circles 1, 2, 3 & 4

Page 2

For Offshore ORC Circle 5

Page 12

For Pursuit Class Circle 6

Page 22

SAILING INSTRUCTIONS

Inshore Circles 1, 2, 3 & 4

Charleston Race Week - April 8-11, 2021
Organizing Authority: Charleston Ocean Racing Association

The notation '[DP]' in a rule in the SI means that the penalty for a breach of that rule may, at the discretion of the protest committee, be less than disqualification. The notation '[NP]' denotes that a breach of this rule will not be grounds for protest by a boat. This change is added to RRS 60.1(a).

1. RULES

- 1.1. The regatta will be governed by the rules as defined in The Racing Rules of Sailing (RRS), and the Charleston Race Week (CRW) PHRF Policies and Procedures, which are listed online at [Charleston Race Week Yacht Scoring](#).
- 1.2. US Sailing Prescriptions to RRS 63.1 and 63.2 will not apply. The US Sailing Prescriptions can be found online at [Charleston Race Week Yacht Scoring](#).
- 1.3. Appendix V, Alternative Penalties, will apply.
- 1.4. Appendix T, Arbitration, will apply.
- 1.5. If there is a conflict between languages the English text will take precedence.

2. NOTICES TO COMPETITORS

- 2.1. Notices to competitors will be posted on the official notice board online at [Charleston Race Week Yacht Scoring](#).
- 2.2. Any questions concerning the notice of race, these sailing instructions, scoring, or any other issue shall be submitted online at [Charleston Race Week Yacht Scoring](#). Forms are available on line and can be emailed to scoring@charlestonraceweek.com. All inquiries and responses will be posted on the official notice board.

3. CHANGES TO SAILING INSTRUCTIONS

- 3.1. Any change to the sailing instructions will be posted on the official notice board before 0900 on the day it will take effect, except that any change to the schedule of races will be posted by 2000 on the day before it will take place.
- 3.2. For an on the water change to the sailing instructions, in accordance with RRS 90.2(c): "L" flag shall be displayed with class flag, if appropriate, and will be followed by a broadcast hail of the change on the designated VHF channel.

4. SIGNALS MADE ASHORE

- 4.1. Signals made ashore will be displayed at the flagpole located on the dock outside the marina office and posted on the official notice board.
- 4.2. When flag "AP" is displayed ashore, "1 minute" is replaced with "not less than 30 minutes" in the race signal AP.

5. SCHEDULE OF RACES & EVENTS

Date	Time	Event
Thursday, April 8	1200-1700 1730-1800	Registration packet pickup (Lookout Pavilion) Skippers Meeting (Online)
Friday, April 9	1100 1750-1950	Inshore (Circles 1-2-3-4) First Warning Signal Dinner / Beverage Pick-up
Saturday, April 10	1100 1750-1950	Inshore (Circles 1-2-3-4) First Warning Signal Dinner / Beverage Pick-up
Sunday, April 11	1100 1630-1800	Inshore (Circles 1-2-3-4) First Warning Signal Awards Ceremony

- 5.2. Ten races (10) are planned, subject to weather conditions. One (1) race for each class shall be completed to constitute a regatta for that class.
- 5.3. The race committee may run up to, but not more than, four (4) races in a single day.
- 5.4. To alert boats that a race or sequence of races will begin soon, the orange starting line flag will be displayed with one sound at least five minutes before a warning signal is made.
- 5.5. On the last day of the regatta, no warning signal will be made after 1400.

6. CLASS FLAGS, BOW NUMBERS, STICKERS, & SAIL NUMBERS [NP][DP]

6.1.

Circle 1:		Circle 2:		Circle 3:		Circle 4:	
VX One	Blue	J/70	White	ORC D	Blue	J/22	Green
RS21	Green	M24	Blue	J105	Purple	J/24	Pink
				J/88	Pink	Inshore PHRF	White

- 6.2. Certain classes will be assigned bow numbers. These bow numbers shall be displayed on both sides of the bow.
- 6.3. Event bow stickers shall be attached to both sides of the boats' hull at all times while racing. The event stickers are to be mounted approximately 2-4 inches below deck level and 6-8 inches aft of any bow numbers, if applied. Boats failing to display event bow stickers may be subject to protest. [NP] [DP]
- 6.4. All boats shall display only the sail numbers under which she has entered, unless prior approval is obtained from the race committee and posted on the official notice board.

7. RACING AREA

- 7.1. The racing areas are shown in Circle Locations in "Illustration A"
- 7.2. The racing area will be in Charleston Harbor.

8. THE COURSES

- 8.1. The diagrams in "Illustration A" detail the courses, including the approximate angle between legs, the order in which the marks are to be passed and the side on which a mark is to be left.

- 8.2. Numeral pennants will be displayed at or before the warning signal to signify the specific course.
- 8.3. The bearing and distance to the first mark will be displayed on the signal boat on placards at or before the warning signal.
- 8.4. If one of the leeward gate marks is missing, boats shall sail around the existing leeward mark leaving it to port.

9. MARKS

9.1.

	Circle 1	Circle 2	Circle 3	Circle 4
Mark 1	Yellow Tetrahedron	Green Mark Bot	Orange Mark Bot	Orange Tetrahedron
Mark 0 (offset)	White ball	Orange Ball or Bot	White Ball	White Ball
Marks 2A/2B	Yellow Tetrahedron	Green Mark Bot	Orange Tetrahedron	Orange Tetrahedron
Start/Finish Marks	RC vessel	RC vessel	RC vessel	RC vessel
Start Pin , if used		Green Mark Bot	Yellow Mark Bot	
Finish Pin, if used	Orange Ball	Green Mark Bot	White Ball	Orange Ball
Change Mark	Orange Tetrahedron	Red Tetrahedron	Yellow Tetrahedron	Yellow Tetrahedron

- 9.2. A race committee vessel signaling a change of leg of the course is a mark as provided in instruction 14.3.

10. CHECK-IN

- 10.1. Before the warning signal of the first race in which she intends to start, each boat shall sail past the stern of the signal vessel on starboard tack and check-in by hailing their bow number. They shall continue to do so until their bow number is verbally acknowledged by the race committee.
- 10.2. Boats failing to check in accordance with 10.1 will be given a 20% scoring penalty as stated in rule 44.3(c). This will apply to each boat's first race of the day.

11. THE START

- 11.1. Races will be started by using RRS 26.
- 11.2. The starting line will be between the staff displaying orange flags on the starting marks. In the event that the port end mark vessel is not on station, it will be replaced by an inflatable mark. The course side of the inflatable mark will define the line.
- 11.3. For Circle 2 ONLY the race committee may set a buoy or mark bot as a mid-line guide, near the middle of the start line. This is neither a starting mark or a mark of the course.
- 11.4. Boats whose warning signal has not been made shall avoid the starting area during the starting sequence for other races. The starting area is defined as 100 yards in all directions from the starting line. [DP][NP]

11.5. A boat that does not *start* within 4 minutes after her starting signal will be scored Did Not Start (DNS) without a hearing. This supplements RRS A4 and A5.3.

12. RECALLS

12.1. The RC will broadcast twice the bow or sail numbers of all boats observed to be OCS at the start. The list will not be updated based on a boat's actions to start properly while the broadcast is being made.

12.2. For classes using bow numbers: Boats identified under RRS 30.3 or 30.4 will be broadcast on designated VHF channels using bow numbers. This changes RRS 30.4.

12.3. Failure of the RC to make a broadcast or to time it accurately or the order of boat(s) hailed will not be grounds for granting redress. This is an addition to RRS 62.1(a).

13. CHANGE OF COURSE BEFORE THE START

13.1. If there is a significant wind shift the signal vessel may signal a change of course for classes/fleets not yet started.

13.2. If the race committee signal vessel displays flag "C" before or with the warning signal, accompanied by a series of repetitive sounds, the first mark of the course will be a new / change mark. When in a subsequent change a new mark is replaced, it will be replaced by an original mark. This changes RRS 26 and 33.

14. CHANGE OF THE NEXT LEG OF THE COURSE

14.1. To change the next leg of the course, the race committee will lay a new mark (or move the finishing line) and remove the original mark as soon as practical. When in a subsequent change a new mark is replaced, it will be replaced by an original mark.

14.2. The Offset (Mark 0) will not be set after a course change or a change of course before the start SI 13.

14.3. Except at a gate, boats shall pass between the race committee vessel signaling change of the next leg and the nearby turning mark, leaving the mark to port and the race committee vessel to starboard.

14.4. The race committee may make small adjustments to the angle of a gate without making any signals.

14.5. The race committee will attempt to broadcast any course changes over the designated VHF channel as a courtesy. Failure of a boat to hear such notification or failure to broadcast will not be grounds for granting redress. This supplements RRS 60.1(b) and 62.1(a).

15. THE FINISH

15.1. For windward finishes, the finishing line will be between a staff displaying a checkered flag on the finish vessel and a staff displaying a checkered flag on the nearby finish vessel or an inflatable buoy. This changes Race Signals.

15.2. For downwind finishes, the finish will be on the opposite side of the signal vessel from the starting line between a staff displaying a checkered flag on signal vessel and a staff displaying a checkered flag on a nearby finish vessel or an inflatable buoy. This changes Race Signals.

16. PENALTY SYSTEM

- 16.1. Unless the course is shortened to finish at the windward mark, penalties within the zone of the windward mark or on the offset leg may be delayed and taken as soon as possible on the downwind leg.
- 16.2. Penalty declarations - A boat that has taken a penalty turn(s) in accordance with SI 1.3 shall complete the penalty declaration form before the end of protest time limit. A boat wishing to take a post-race penalty in accordance with SI 1.3 or wishes to retire after finishing shall complete the penalty declaration form. Forms are available online and may be emailed to scoring@charlestonraceweek.com. [NP][DP]

17. TIME LIMITS

- 17.1. The time limit for the first boat to finish in each class will be 90 minutes.
- 17.2. Boats still racing more than 30 minutes after the first boat to sail the course in accordance with RRS 28.1 finishes will be scored TLE (Time Limit Expired) without a hearing (see Scoring). This change is added to RRS 35, 63.1, A5.1, and A5.2.

18. PROTESTS AND REQUESTS FOR REDRESS

- 18.1. Protest forms are available online at [Charleston Race Week Yacht Scoring](#). Protests and requests for redress or reopening shall be delivered there within the appropriate time limit and must include the name of the skipper of the boat, that person's email address, and phone numbers. This supplements RRS 61.2.
- 18.2. Protest time limit is 60 minutes after the race committee signal vessel of the appropriate circle docks. The race committee will make the number of sound signals corresponding to its circle number upon docking and post the docking time on the official notice board.
- 18.3. Notices will be posted online at [Charleston Race Week Yacht Scoring](#) ; no later than 30 minutes after the protest time limit to inform competitors of hearings in which they are parties or named as witnesses. Hearings will be held beginning at the time set forth in the posted notice in a virtual hearing to be held beginning at the time set forth in the posted notice using connection links to be provided by the hearing panel before the hearing time.
- 18.4. For the purpose of RRS 64.4(b) the "authority responsible" is the measurer appointed by the organizing authority (Charleston Ocean Racing Association).
- 18.5. Notices of protests by the race committee, the technical committee or protest committee will be posted to inform boats under RRS 61.1(b).
- 18.6. Hearings conducted in accordance with the rules of RRS Part 5, Section B [Hearings & Decisions] will be virtual hearings, and parties and witnesses to such hearings shall have access to a device that has internet accessibility with audio and video capability; parties and witnesses must use audio and video to appear before a hearing panel unless advised otherwise by the hearing panel. See *Information for Competitors* posted on the event website: [Charleston Race Week Yacht Scoring](#).
- 18.7. Hearings conducted in accordance with RRS Part 5, Section C [Misconduct] shall be virtual hearings, and parties, party representatives, and witnesses to such hearings shall have access to a device that has internet accessibility with audio and video capability; parties, their representatives and witnesses must use audio and video to appear before a hearing panel unless advised otherwise by the hearing panel.

- 18.8. On the last scheduled day of racing, a request for redress based on a protest committee decision shall be delivered no later than 30 minutes after the decision was posted. This changes RRS 62.2.
- 18.9. If the race committee posts a list of boats scored OCS, ZFP, UFD, BFD, NSC or TLE on the official board before the protest time limit, a request for redress based on such a posted score shall be made no later than one hour after the protest time limit. This changes RRS 62.2(a).

19. PROTEST ARBITRATION

Arbitrations conducted in accordance with Appendix T [Arbitration] to the RRS shall be conducted virtually and parties to arbitrations shall have access to a device that has internet accessibility with audio and video capability; parties must use audio and video to appear before an arbitrator unless advised otherwise by the arbitrator. See *Information for Competitors* posted on the event website: [Charleston Race Week Yacht Scoring](#).

20. SCORING

- 20.1. (a) When five (5) or fewer races have been completed, a boat's series score will be the total of its race scores. (b) When six (6) or more races have been completed, a boat's series score will be the total of its scores excluding its worst score.
- 20.2. Boats scored TLE will be scored points equal to the number of boats finishing within the time limit plus two points by the race committee without a hearing. The total shall not exceed the total number of boats in that class. This supplements RRS A4, & A5.3.
- 20.3. A boat that did not start, did not finish, or was disqualified shall be scored points for the finishing place one more than the number of boats entered in that race. This change is added to RRS A5.1.
- 20.4. Inshore ORC classes will be scored using time on time, triple number ratings for Windward/Leeward courses. Prior to the warning signal, the RC will announce its intention to use Low, Medium or High wind rating for scoring the race.

21. SAFETY REGULATIONS [NP][DP]

- 21.1. Each competitor is solely responsible for his own safety and, by participation, agrees to sail and use Charleston Harbor Resort and Marina facilities at his or her own risk. Neither the Charleston Ocean Racing Association nor persons assisting with the conduct of races shall be responsible for damage or injury suffered during races or related activities.
- 21.2. A boat that retires from a race, leaves the course area or returns to the course area between races shall notify the race committee as soon as possible. Failure to do so may result in protest.
- 21.3. A boat and its crew shall at all times keep clear of all commercial vessels and shall not maneuver in any manner which would cause a commercial vessel to be unable to sail its proper course or carry out its commercial functions in a normal manner. a.) A boat whose actions or maneuvers result in a danger signal (5 or more Blasts) from commercial vessels shall be protested by the race committee or protest committee. b.) The penalty for breaking this rule may be disqualification from the entire regatta.
- 21.4. There will be a courtesy announcement on each circle's designated VHF channel each morning and at the end of the day's racing to communicate expected commercial traffic needs to the fleets. Boats are reminded that Charleston Harbor and its approaches have a high level of commercial traffic.

21.5. Inshore Circles 1, 2, and 3 competitors, please be advised that when transiting to the race area from Charleston Harbor Marina, leave G29 to starboard. Passing between G29 and Castle Pinckney is not recommended.

22. REPLACEMENT OF CREW OR EQUIPMENT

22.1. Substitution of competitors will not be allowed without prior written approval of the event Principal Race Officer or the Race Director.

22.2. Approved changes will be posted on the official notice board by 0800hrs on the day the change will take effect.

23. EQUIPMENT AND MEASUREMENT CHECKS

A boat or equipment may be inspected at any time for compliance with the class rules and sailing instructions. On the water, a boat can be instructed by a member of the race committee or the technical committee to proceed immediately to a designated area for inspection.

24. SUPPORT BOATS [NP][DP]

24.1. Support boats shall register online at [Charleston Race Week Yacht Scoring](#).

24.2. Support boats shall be marked by a pennant supplied by the race committee and remain 150 yards from the race course from preparatory signal until all boats have finished or retired or the race committee signals postponement, general recall or abandonment.

24.3. Failure of a support boat to register shall be considered a breach of RRS 2 (Fair Sailing), by the boats associated with the support boat, and is subject to protest.

24.4. Support boats shall carry a VHF radio tuned to the designated race committee VHF channel of the nearest race circle and be ready to assist the race committee if so instructed.

24.5. Support drivers shall have valid third-party liability insurance or the equivalent and provide proof upon request by the race committee or organizing authority.

25. HAUL OUT [NP][DP]

Boats shall not be hauled during the regatta except with and according to the terms of prior written permission of the event Principal Race Officer or the Race Director.

26. PRESS AND SPECTATOR VESSELS [NP][DP]

26.1. All press and official spectator vessels shall be registered with the race organizers during registration. Press and official spectator vessels shall monitor the designated VHF channel for the course they are on and be ready to assist the race committee if so instructed.

26.2. Press and spectator vessels shall not interfere with the racing, in any way and remain 150 yards from any boat that is racing and on the outside of the race course as defined by the location of the rounding marks at a distance outside the race course where their wake causes no problem.

26.3. The organizers may appoint one or more photo boats, which will be allowed within the race course. The position of these boats shall not be grounds for redress.

26.4. Press and spectator vessels shall display a flag, or other identification symbols as may be required by the race committee.

27. RADIO COMMUNICATION [NP][DP]

27.1. The race committee will broadcast its intentions for racing that day on the designated VHF Channel at 0930 and again at 1000.

27.2. The race committee may broadcast the bearing and distance to the first mark, or may report other visual signals, on the applicable VHF channel before the warning signal. Information broadcast by the race committee is provided as a courtesy to competitors and does not in any way alter the competitors' responsibility to observe the race committee's visual signals which govern the conduct of the racing. Errors or omissions on the part of the race committee will not be grounds for granting redress. This change is added to RRS 60.1(b) and 62.1(a)

27.3. The designated VHF channels for each circle are as follows:

Circle 1	VHF Channel 66A
Circle 2	VHF Channel 69
Circle 3	VHF Channel 71
Circle 4	VHF Channel 78A

27.4. All boats shall carry an operating VHF radio.

28. PRIZES

28.1. One daily trophy will be awarded in each class for each day of racing. One overall trophy will be awarded in each class for every three boats entered up to a maximum of three trophies per class.

28.2. The entry that wins the most competitive one-design class will receive recognition on the Charleston Race Week Cup Perpetual Trophy.

28.3. Jubilee Sportsmanship Perpetual Trophy will be awarded to the participant who has displayed outstanding examples of good sportsmanship during Charleston Race Week.

28.4. The entry that wins the most competitive handicap class will receive recognition on the Palmetto Cup Perpetual Trophy.

28.5. The Organizing Authority may award additional prizes at their discretion.

29. DISCLAIMER OF LIABILITY

29.1. Competitors participate in the regatta entirely at their own risk. (See RRS 3, Decision to Race). The Organizing Authority will not accept any liability for material damage or personal injury or death sustained in conjunction with or prior to, during, or after the regatta.

29.2. The safety of a boat and its crew is the sole and inescapable responsibility of the skipper who shall ensure that the boat is fully sound, thoroughly seaworthy, and manned by an experienced and physically able crew. Neither the establishment of regulations or inspection of a boat in any way limits or reduces the complete and unlimited responsibility of the skipper.

29.3. Charleston Ocean Racing Association, Sponsors of the Charleston Race Week, and their employees and volunteers do not accept responsibility for the loss of life or injury to participants or others, or for the loss or damage to any vessel in any way or from any cause during or relating to this event.

29.4. The skipper shall be responsible for the conduct of his crew. In the event of a serious breach of conduct, the destruction of property or the failure to comply with a reasonable request of any race officer or committee member, the skipper will be responsible for all damages and the boat may be subject to protest which may include disqualification from the regatta.

30. INSURANCE

Each participating boat shall be insured with valid third-party liability insurance with a minimum coverage of \$300,000 (USD) per event or the equivalent.

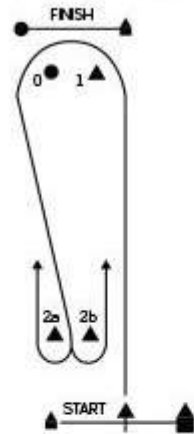
31. INSHORE RACE OFFICIALS



Event/Race Director:	Randy Draftz	rdraftz@charlestonyachting.com
Event PRO:	Taran Teaque	janetaranteague@gmail.com 703.851.2552
Circle One RO:	Tommy Harken	tharken@comcast.net
Circle Two RO	Mark Foster	mfoster1053@gmail.com 361.816.9801
Circle Three RO	Chip Till	chiptill5351@gmail.com
Circle Four RO	Kevin Keogh	keoghke@gmail.com
Chief Judge:	Sarah Ashton	ashtonsh1@me.com

INSHORE RACE COURSES CIRCLES 1,2,3&4 • ILLUSTRATION A

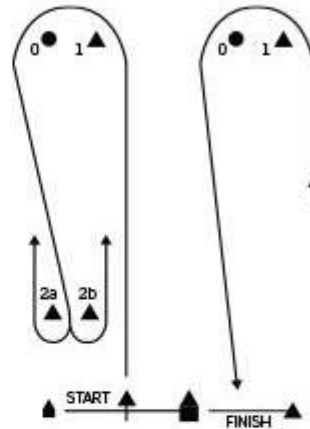
The courses sailed shown in the diagrams below apply to the courses sailed on the inshore course. The leeward gate (mark 2 ab) may be adjusted at the discretion of the Race Committee to keep the course square without further signals.



Course 3 and 5 are Windward-Leeward with a finish to Windward.

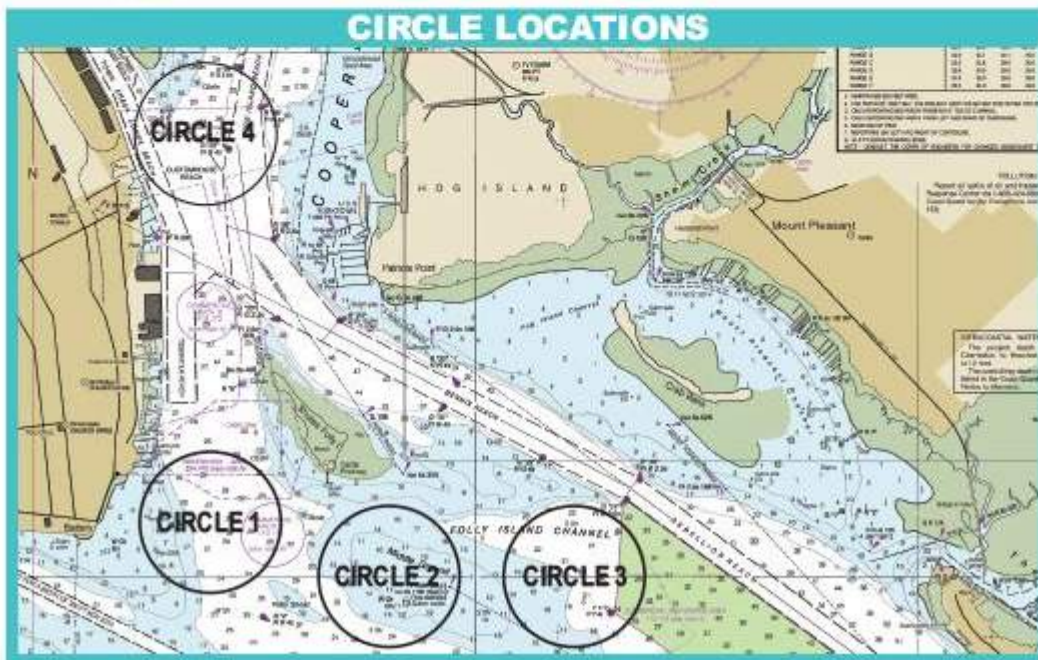


-  Course 3: 3 Legs
Marks: S - 1 - 0 - 2a/b - F
-  Course 5: 5 Legs
Marks: S - 1 - 0 - 2a/b - 1 - 0 - 2a/b - F

Course 4 and 6 are Windward-Leeward with a finish to Leeward.



-  Course 4: 4 Legs
Marks: S - 1 - 0 - 2a/b - 1 - 0 - F
-  Course 6: 6 Legs
Marks: S - 1 - 0 - 2a/b - 1 - 0 - 2a/b - 1 - 0 - F



SAILING INSTRUCTIONS

Offshore ORC Circle 5

Charleston Race Week - April 8-11, 2021

Organizing Authority: Charleston Ocean Racing Association

The notation '[DP]' in a rule in the SI means that the penalty for a breach of that rule may, at the discretion of the protest committee, be less than disqualification. The notation '[NP]' denotes that a breach of this rule will not be grounds for protest by a boat. This changes RRS 60.1(a)

1. RULES

- 1.1. The regatta will be governed by the rules as defined in The Racing Rules of Sailing (RRS), the 2021 ORC Rules, [ORC - US Sailing](#) and the Charleston Race Week (CRW) PHRF Policies and Procedures [Charleston Ocean Racing Association](#) .
- 1.2. The Equipment Rules of Sailing will apply. [The Equipment Rules of Sailing](#) .
- 1.3. The ORC class sailing on the Offshore Circle 5 shall comply with WS Offshore Special Regulations Category 4 requirements. For more information, refer to www.sailing.org/specialregs .
- 1.4. US Sailing Prescriptions to RRS 63.1 and 63.2 will not apply. All the US Sailing Prescriptions can be found on the event Yacht Scoring webpage.
- 1.5. Appendix V, Alternative Penalties, will apply.
- 1.6. Appendix T, Arbitration, will apply.
- 1.7. If there is a conflict between languages the English text will take precedence.

2. NOTICES TO COMPETITORS

- 2.1. Notices to competitors will be posted on the official notice board located online at [Charleston Race Week Yacht Scoring](#).
- 2.2. Any questions concerning the notice of race, these sailing instructions, scoring, or any other issue shall be submitted online at [Charleston Race Week Yacht Scoring](#). Forms for submission will be available there and can be emailed to scoring@charlestonraceweek.com. All inquiries and responses will be posted on the official notice board.

3. CHANGES TO SAILING INSTRUCTIONS

- 3.1. Any shore side change in the sailing instructions will be posted on the official notice board before 0800 on the day it will take effect, except that any change to the schedule of races will be posted by 2000 on the day before it will take place.
- 3.2. For an on the water change to the sailing instructions, in accordance with RRS 90.2(c): "L" flag shall be displayed with class flag, if appropriate, and will be followed by a broadcast of the change on the designated VHF channel. This changes RRS Race Signals.

4. SIGNALS MADE ASHORE

- 4.1. Signals made ashore will be displayed on the flagpole located on the dock outside the marina office and posted on line on the official notice board.

- 4.2. When flag “AP” is displayed ashore, the warning signal for the first start will be signaled not less than 60 minutes after “AP” is lowered. This changes RRS Race Signals.

5. SCHEDULE OF RACES AND EVENTS

5.1.

Date	Time	Event
Thursday, April 8	1200-1700 1730-1800	Registration packet pickup (Lookout Pavilion) Skippers Meeting (Online)
Friday, April 9	1100 1750-1950	Offshore Circle 5 Warning Signal Dinner/Beverage Pick-up
Saturday, April 10	1100 1750-1950	Offshore Circle 5 Warning Signal Dinner/Beverage Pick-up
Sunday, April 11	1100 1630-1800	Offshore Circle 5 Warning Signal Awards Ceremony

- 5.2. Six (6) races are scheduled for Offshore ORC Circle 5. One race for each class shall be completed to constitute a regatta for that class.

5.3. No warning signal will be made after 1400 on Sunday April 11.

6. CLASS FLAGS, STICKERS & SAIL NUMBERS [NP][DP]

- 6.1. Event bow stickers shall be attached to both sides of the boats’ hull at all times while racing. The event stickers are to be mounted approximately 6-10 inches below deck level and 8-14 inches aft of the bow. Boats failing to display event bow stickers may be subject to protest.
- 6.2. Boats shall display the appropriate class flag from the backstay at least 5 feet above the deck. Flags are available in the skipper’s packages.
- 6.3. All boats shall display only the sail numbers under which she has entered, unless prior written approval is obtained from the race committee and posted on the official notice board.
- 6.4. Class flag will be: ORC A - White, ORC B – Green/Pink.

7. RACING AREA

The racing area will be the Charleston Harbor and ocean as shown in “Illustration B” Race Areas.

8. COURSES

8.1 The diagram in the SI “Illustration B” shows the intended courses 1,1E, 1X, 2L, 3L, and 4L. The “E” and “X” courses offer a longer Government mark course. The “L” courses offer two laps of offshore windward leeward.

Course 1 - 10.5 nm (ORC): start, leave G25 to starboard, pass through GATE (G21/R22), pass through GATE (G15/R16), pass through GATE (G21/R22), leave G25 to port, finish.

Course 1E - 13.5 nm (ORC): start, leave G25 to starboard, pass through GATE (G21/ R22), pass through GATE (G13/R14), pass through GATE (G21/R22), leave G25 to port, finish.

Course 1X - 16.5 nm (ORC): start, leave G25 to starboard, pass through GATE (G21/R22), pass through GATE (G11/R12), pass through GATE (G21/R22), leave G25 to port, finish.

Course 2L - 16.5 nm (ORC): start, leave G25 to starboard, pass through GATE (G21/ R22), pass through GATE (G15/R16), leave Mark 1 to port, leave Mark 2 to port, leave Mark 1 to port, pass through GATE (G15/R16), pass through GATE (G21/ R22), leave G25 to port, finish. Mark 1 from GATE (G15/R16) 2.0 nm, Mark 2 from GATE (G15/R16) 1.0 nm.

Course 3L - 19.5 nm (ORC): start, leave G25 to starboard, pass through GATE (G21/ R22), pass through GATE (G13/R14), leave Mark 1 to port, leave Mark 2 to port, leave Mark 1 to port, pass through GATE (G13/R14), pass through GATE (G21/ R22), leave G25 to port, finish. Mark 1 from GATE (G13/R14) 2.0 nm, Mark 2 from GATE (G13/R14) 1.0 nm.

Course 4L - 20.3 nm (ORC): start, leave G25 to starboard, pass through GATE (G21/R22), round R14 to port, round N2 (off Rattlesnake Shoal) to port, round Mark 1 to port, round R16 to starboard, pass through GATE (G21/R22), leave G25 to port, finish. Mark 1 is located at approximately 32 44.55N and 079 46.65W.

Course 4LR - 20.3 nm (ORC): start, leave G25 to starboard, pass through GATE (G21/R22), round R16 to port, round Mark 1 to starboard, round N2 (off Rattlesnake Shoal) to starboard, round R 14 to starboard, pass through GATE (G21/R22), leave G25 to port, finish. Mark 1 is located at approximately 32 44.55N and 079 46.65W

8.2 Placards showing the course to be sailed for each class and the direction to Marks 1 and 2 (if used) from the gate marks will be displayed on the signal boat and announced on VHF 73 no later than the warning signal.

9. MARKS

The start marks will be a race committee vessel and an inflatable mark. Government marks are: G“25”, G“21”, R“22”, G“15”, R“16”, G“13”, R“14”, G“11”, R“12” and N“2” off Rattlesnake Shoal. Mark 1 is a yellow tetrahedron and Mark 2 is an orange cylinder with a black band. Finish marks will be a race committee vessel and an inflatable mark.

10. CHECK IN

Boats intending to race shall check in with the Race Committee via VHF channel 73 at the harbor starting area before their warning time. Boats shall confirm the number of persons on board. A boat shall continue to check in until it has been acknowledged by the Race Committee.

11. THE START

11.1. The harbor starting area will be in the area bounded by Rebellion Reach to the southwest and the access to the Mt Pleasant Channel G “1” to the northeast and FL R “130” at the access to the ICW/Sullivan Island Narrows to the east. (Approximately 32 46.00N and 79 52.50W.) The Pursuit Classes on Circle 6 and Offshore ORC on Circle 5 will both be using the same start/finish line location.

11.2. The starting line will be between the staff displaying orange flag on the RC vessel and the course side of an inflatable mark.

11.3. The race committee will use RRS 26.

11.4. A boat starting later than 10 minutes after her starting signal will be scored Did Not Start (DNS) without a hearing. This change supplements RRS 63.1 and A5.

12. RECALLS

Failure of a boat to hear her recall notification and the timing and order of such hails, or failure to hail will not be grounds for granting redress. This change supplements RRS 62.1(a).

13. CHANGE OF THE NEXT LEG OF THE COURSE

The course configuration will not be changed. However, the Race Committee may shorten the course at any mark of the course.

14. THE FINISH

- 14.1. The finish line will be in the vicinity of the harbor start which is the area bounded by Rebellion Reach to the southwest and the access to the Mt Pleasant Channel G "1" to the northeast and FL R "130" at the access to the ICW/Sullivan Island Narrows to the east. (Approximately 32 46.00N and 79 52.50W.)
- 14.2. The finish line will be between a staff displaying a checkered flag on the RC vessel at the port end and an inflatable mark at the starboard end.

15. PENALTY SYSTEM

Penalty declarations - A boat that has taken a penalty turn(s) in accordance with SI 1.5 shall complete the penalty declaration form available at [Charleston Race Week Yacht Scoring](#) before the end of protest time limit. A boat wishing to take a post-race penalty in accordance with RRS V2 or wishes to retire after finishing shall complete the penalty declaration form. Forms are available online and may be emailed to scoring@charlestonraceweek.com. [NP][DP]

16. TIME LIMIT

- 16.1. All boats shall finish by 1600 on Friday and Saturday.
- 16.2. All boats shall finish by 1500 on Sunday.
- 16.3. Boats not finishing within the time limit will be scored TLE (Time Limit Expired) without a hearing. This change is added to RRS 35, 63.1, A5.1 and A5.2.

17. PROTESTS AND REQUESTS FOR REDRESS

- 17.1. Protest forms are available online at [Charleston Race Week Yacht Scoring](#). Protests and requests for redress or reopening shall be delivered there within the appropriate time limit and must include the name of the skipper of the boat, that person's email address, and phone numbers. This supplements RRS 61.2.
- 17.2. Protest time limit is 60 minutes after the race committee signal vessel of the appropriate circle docks. The race committee will make the number of sound signals corresponding to its circle number upon docking and post the docking time on the official notice board.
- 17.3. Notices will be posted online at [Charleston Race Week Yacht Scoring](#); no later than 30 minutes after the protest time limit to inform competitors of hearings in which they are parties or named as witnesses. Hearings will be held beginning at the time set forth in the posted notice in a virtual hearing to be held beginning at the time set forth in the posted notice using connection links to be provided by the hearing panel before the hearing time.
- 17.4. For the purpose of RRS 64.4(b) the "authority responsible" is the measurer appointed by the organizing authority (Charleston Ocean Racing Association).
- 17.5. Notices of protests by the race committee, the technical committee or protest committee will be posted to inform boats under RRS 61.1(b).

- 17.6. Hearings conducted in accordance with the rules of RRS Part 5, Section B [Hearings & Decisions] will be virtual hearings and parties and witnesses to such hearings shall have access to a device that has internet accessibility with audio and video capability; parties and witnesses must use audio and video to appear before a hearing panel unless advised otherwise by the hearing panel. See *Information for Competitors* posted on the event website: [Charleston Race Week Yacht Scoring](#).
- 17.7. Hearings conducted in accordance with RRS Part 5, Section C [Misconduct] shall be virtual hearings and parties, party representatives, and witnesses to such hearings shall have access to a device that has internet accessibility with audio and video capability; parties, their representatives and witnesses must use audio and video to appear before a hearing panel unless advised otherwise by the hearing panel.
- 17.8. On the last scheduled day of racing a request for redress based on a protest committee decision shall be delivered no later than 30 minutes after the decision was posted. This changes RRS 62.2.
- 17.9. If the race committee posts a list of boats scored OCS, ZFP, UFD, BFD, NSC or TLE on the official board before the protest time limit, a request for redress based on such a posted score shall be made no later than one hour after the protest time limit. This changes RRS 62.2.

18. PROTEST ARBITRATION

Arbitrations conducted in accordance with Appendix T [Arbitration] to the RRS shall be conducted virtually and parties to arbitrations shall have access to a device that has internet accessibility with audio and video capability; parties must use audio and video to appear before an arbitrator unless advised otherwise by the arbitrator. See *Information for Competitors* posted on the event website: [Charleston Race Week Yacht Scoring](#).

19. SCORING

- 19.1. When five (5) or fewer races have been completed, a boat's series score will be the total of her race scores. This changes RRS A2.1. When six (6) races have been completed, a boat's series score will be the total of her race scores excluding her worst score. This changes A2.1.
- 19.2. Boats scored TLE will be scored points equal to the number of boats finishing within the time limit plus two points by the race committee without a hearing. The total shall not exceed the total number of boats in that class. This supplements RRS A4.1, A4.2 and A5.
- 19.3. Offshore ORC Classes will be scored Time-on-Time using ORC Triple Number ORC ratings for the All Purpose course model. Prior to the warning signal the RC will announce its intention to use Low, Medium or High wind rating for scoring.
- 19.4. If conditions permit, a scoring gate will be used at a designated mark of the course. Times will be taken as boats round the designated mark and this will be scored as one race. The complete race will constitute a second race. Prior to the warning signal the RC will announce the mark to be designated as the scoring gate.

20. SAFETY REGULATIONS [DP][NP]

- 20.1. Each competitor is solely responsible for his own safety and, by participation, agrees to sail and use Charleston Harbor Resort and Marina facilities at his or her own risk. The

Charleston Ocean Racing Association nor persons assisting with the conduct of races shall be responsible for damage or injury suffered during races or related activities.

- 20.2. A boat that retires from a race or leaves the course area between races shall notify the race committee before leaving the course area or immediately after arriving ashore on the designated VHF channel or by telephone. Failure to do so may result in protest.
- 20.3. A boat and its crew shall at all times keep clear of all commercial vessels and shall not maneuver in any manner which would cause a commercial vessel to be unable to maneuver its proper course or carry out its commercial functions in a normal manner. a.) A boat whose actions or maneuvers result in a danger signal (5 or more blasts) from commercial vessels shall be protested by the race committee. b.) The penalty for breaking this rule shall be disqualification from the entire regatta.
- 20.4. There will be a courtesy announcement on the designated VHF channel each morning and at the end of the day's racing to communicate expected commercial traffic needs to the fleets. Boats are reminded that Charleston Harbor and its approaches have a high level of commercial traffic.
- 20.5. Before the first warning signal of each day, boats shall have provided to the OA their crew list. Crew list updates may be sent via email to [Charleston Race Week Yacht Scoring](#). Forms for submission will be available there.

21. REPLACEMENT OF CREW OR EQUIPMENT

- 21.1. Boats shall sail with the same number of crew each day, as registered and conforming to any crew weight limitations, in all races unless prior written permission to change crew is granted by the race committee.
- 21.2. Approved changes will be posted on the official notice board by 0800 hrs on the day the change will take effect.

22. EQUIPMENT AND MEASUREMENT CHECKS

A boat or equipment may be inspected at any time for compliance with the class rules and sailing instructions. On the water, a boat can be instructed by a member of the race committee or technical committee to proceed immediately to a designated area for inspection.

23. PRESS AND SPECTATOR VESSELS [NP]

- 23.1. All press and official spectator vessels shall be registered with the race organizers during registration. Press and official spectator vessels shall monitor the designated VHF channel for the course they are on and be ready to assist the Race Committee if so instructed.
- 23.2. Press and spectator vessels shall not interfere with the racing, in any way and remain 150 yards from any boat that is racing and on the outside of the race course where as defined by the location of the rounding marks at a distance outside the race course where their wake causes no problem.
- 23.3. The organizers may appoint one or more photo vessels, which will be allowed within the race course. The position of these vessels shall not be grounds for redress.
- 23.4. Press and spectator vessels shall display a flag, or other identification symbol as may be required by the race committee.

24. RADIO COMMUNICATION [NP]

- 24.1. The designated VHF channel for Offshore Circle 5 will be VHF channel 73.

24.2. The race committee will broadcast its intent on the designated VHF channel at 0830 and again at 1000.

25. PRIZES

25.1. One daily trophy will be awarded in each class for each day of racing. One overall trophy will be awarded in each class for every three boats entered up to a maximum of three trophies per class. The entry that wins the most competitive handicap class will receive recognition on the Palmetto Cup Perpetual Trophy.

25.2. Jubilee Sportsmanship Perpetual Trophy will be awarded to the participant who has displayed outstanding examples of good sportsmanship during Charleston Race Week.

25.3. The Organizing Authority may award additional prizes at their discretion.

26. DISCLAIMER OF LIABILITY

26.1. Competitors participate in the regatta entirely at their own risk. (see RRS3, Decision to Race). The Organizing Authority will not accept any liability for material damage or personal injury or death sustained in conjunction with or prior to, during, or after the regatta.

26.2. The safety of a boat and its crew is the sole and inescapable responsibility of the Skipper who shall ensure that the boat is fully sound, thoroughly seaworthy, and manned by an experienced and physically able crew. Neither the establishment of regulations or inspection of a boat in any way limits or reduces the complete and unlimited responsibility of the Skipper.

26.3. Charleston Ocean Racing Association, Sponsors of the Charleston Race Week, and their employees and volunteers do not accept responsibility for the loss of life or injury to participants or others or for the loss or damage to any vessel in any way or from any cause during or relating to this event.

26.4. The Skipper shall be responsible for the conduct of his crew. In the event of a serious breach of conduct, the destruction of property or the failure to comply with a reasonable request of any Race Officer or Committee Member, the Skipper will be responsible for damages and the boat may be subject to protest which may include disqualification from the regatta.

27. OFFSHORE RACE OFFICIALS

Event/Race Director: Randy Draftz rdraftz@charlestonyachting.com

Event PRO: Taran Teaque janetaranteague@gmail.com

Offshore RO: Bruce Bingman blocrunner@aol.com

Chief Judge Sarah Ashton ashtonsh1@me.com

ORC OFFSHORE COURSES 1, 1E, 1X • ILLUSTRATION B

Course 1 - 10.5nm (ORC):
Start, leave G25 to starboard, pass through GATE (G21/ R22), pass through GATE (G15/R16), pass through GATE (G21/R22) leave G25 to port, finish.



Course 1E - 13.5 nm (ORC):
Start, leave G25 to starboard, pass through GATE (G21/ R22), pass through GATE (G13/R14), pass through GATE (G21/R22) leave G25 to port, finish.



Course 1X - 16.5 nm (ORC):
Start, leave G25 to starboard, pass through GATE (G21/ R22), pass through GATE (G11/R12), pass through GATE (G21/R22) leave G25 to port, finish.

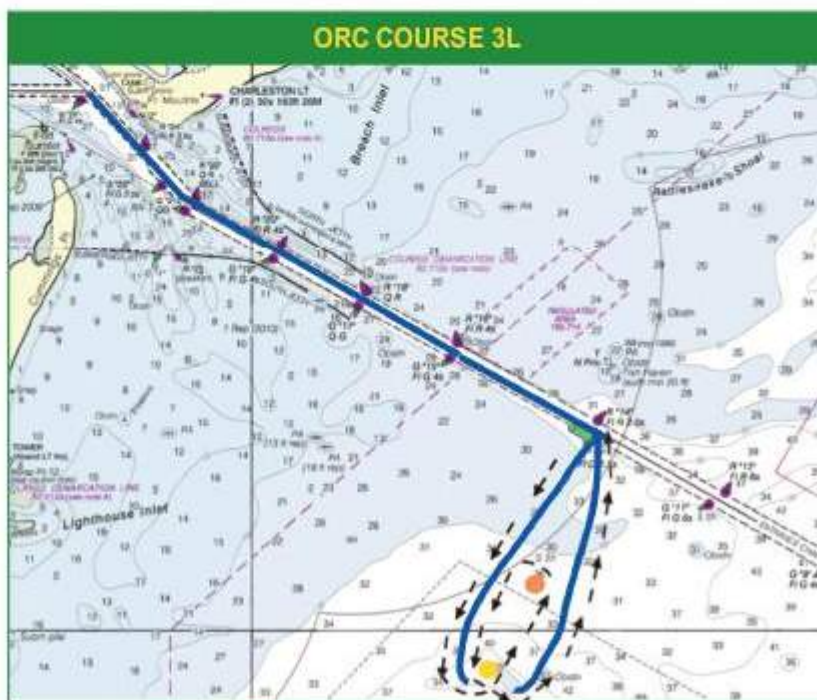


ORC COURSES 2L & 3L • ILLUSTRATION B

Course 2L - 16.5nm (ORC):
Start, leave G25 to starboard,
pass through GATE (G21/ R22),
pass through GATE (G15/R 16),
leave Mark 1 to port, leave mark
2 to port, leave Mark 1 to port,
pass through GATE (G15/R 16),
pass through GATE (G21/ R22),
leave G25 to port, finish.
Mark 1 from GATE (G15/R16)
2.0nm, Mark 2 from GATE
(G15/R16) 1.0nm.



Course 3L - 19.5nm (ORC):
Start, leave G25 to starboard,
pass through GATE(G21/ R22),
pass through GATE (G13/R14),
leave Mark 1 to port, leave
Mark 2 to port, leave Mark 1 to
port, pass through GATE
(G13/R14), pass through GATE
(G21/ R22), leave G25 to port,
finish.
Mark 1 from GATE (G13/R14)
2.0nm, Mark 2 from GATE
(G13/14) 1.0nm.



ORC OFFSHORE COURSES 4L & 4LR • ILLUSTRATION B



Course 4L - 20.3 nm (ORC):

Start, leave G25 to starboard, pass through GATE (G21/ R22), round R14 to port, round N2 (off Rattlesnake shoal) to port, round Mark 1 to port, round R16 to starboard, pass through GATE (G21R22) to port, finish.
Mark 1 is located at approximately 32.44.59N and 079 46.65OW.

Course 4LR-20.3 nm (ORC):

Start, leave G25 to starboard, pass through GATE (G21/ R22), round R16 to port, round Mark 1 to starboard, round N2 (off Rattlesnake shoal) to starboard, round R14 to starboard, pass through GATE (G21R22) leave G25 to port, finish.
Mark 1 is located at approximately 32.44.59N and 079 46.65OW.

SAILING INSTRUCTIONS

Pursuit Class Circle 6

Charleston Race Week - April 8-9, 2021

Organizing Authority: Charleston Ocean Racing Association

1. RULES

- 1.1. The regatta will be governed by the rules as defined in The Racing Rules of Sailing (RRS) and the Charleston Race Week (CRW) PHRF Policies and Procedures which are listed online at [Charleston Ocean Racing Association](#).
- 1.2. The Equipment Rules of Sailing will apply. [The Equipment Rules of Sailing](#).
- 1.3. The Pursuit class sailing on the offshore Pursuit Class Circle 6 shall comply with the WS Offshore Special Regulations Category 4 requirements. For more information refer to www.Sailing.org/specialregs
- 1.4. U S Sailing Prescriptions to RRS 63.1 and 63.2 will not apply. All the US Sailing Prescriptions can be found on the event Yacht Scoring webpage.
- 1.5. RRS 44.3 Scoring Penalties, will apply.
- 1.6. Appendix V2, Alternative Penalties will apply.
- 1.7. Appendix T, Arbitration, will apply.
- 1.8. If there is a conflict between languages the English text will take precedence.

2. NOTICES TO COMPETITORS

- 2.1. Notices to competitors will be posted on the official notice board located online at [Charleston Race Week Yacht Scoring](#).
- 2.2. Any questions concerning the notice of race, these sailing instructions, scoring, or any other issue shall be submitted online at [Charleston Race Week Yacht Scoring](#). Forms for submission will be available there and can be emailed to scoring@charlestonraceweek.com. All inquiries and responses will be posted on the official notice board.

3. CHANGES TO SAILING INSTRUCTIONS

- 3.1. Any change in the sailing instructions will be posted on the official notice board before 0800 on the day it will take effect, except that any change to the schedule of races will be posted by 2000 on the day before it will take place.
- 3.2. For an on the water change to the sailing instructions, in accordance with RRS 90.2(c): "L" flag shall be displayed with class flag, if appropriate, and will be followed by a broadcast of the change on the designated VHF channel.

4. SIGNALS MADE ASHORE

- 4.1. Signals made ashore will be displayed on the flagpole located on the dock outside the marina office and posted on the official notice board.
- 4.2. When flag "AP" is displayed ashore, the warning signal for the first start will be signaled not less than 60 minutes after "AP" is lowered. This changes RRS Race Signals.

5. SCHEDULE OF RACES AND EVENTS

- 5.1.

Date	Time	Event
Thursday, April 8	1200-1700 1730-1800	Registration packet pickup (Lookout Pavilion) Skippers Meeting (Online)
Friday, April 9	0930 1750-1950	Pursuit Class Warning Signal Dinner/Beverage Pick-up
Saturday, April 10	0930 1750-1950	Pursuit Class Warning Signal Dinner/Beverage Pickup
Sunday, April 11	0930 1630-1800	Pursuit Class Warning Signal Awards Ceremony

5.2. Three (3) races are scheduled. One race shall be completed to constitute a regatta.

5.3. No warning signal will be made after 1200 on Sun., April 11.

6. CLASS FLAGS AND SAIL NUMBERS [NP][DP]

6.1. Class flags - Circle 6: Spinnaker A (SA) Blue; Spinnaker B (SB) Pink; Non-Spinnaker (NS) Green/White

6.2. All boats shall display only the sail numbers under which she has entered, unless prior written approval is obtained from the race committee and posted on the official notice board.

7. RACING AREA

The racing area will be Charleston Harbor and ocean as shown on the race course diagrams.

8. COURSES

8.1. The diagram in the SI "Illustration C" shows the intended courses 1,1E, 1X, 2, 3 and 4. The "E" and "X" courses offer a longer Government mark course. There will be three classes: Spinnaker Class A (SA), Spinnaker Class B (SB), and Non-spinnaker Class (NS).

Course 1 - 10.5 nm (SA), (SB) and (NS): start, leave G25 to starboard, pass through GATE (G21/R22), pass through GATE (G15/R16), pass through GATE (G21/R22), leave G25 to port, finish.

Course 1E - 13.5 nm (SA), (SB) and (NS): start, leave G25 to starboard, pass through GATE (G21/ R22), pass through GATE (G13/R14), pass through GATE (G21/R22), leave G25 to port, finish.

Course 1X - 16.5 nm (SA), (SB) and (NS): start, leave G25 to starboard, pass through GATE (G21/R22), pass through GATE (G11/R12), pass through GATE (G21/R22), leave G25 to port, finish.

Course 2 - 14.5 nm (SA), 12.5 nm (SB) and (NS): start, leave G25 to starboard, pass through GATE (G21/ R22), pass through GATE (G15/R16), leave Mark 1 to port, pass through GATE (G15/R16), pass through GATE (G21/ R22), leave G25 to port, finish. Mark 1 from GATE (G15/R16) 2.0 nm (SA), 1.0 nm(SB) and (NS).

Course 3 - 17.5 nm (SA), 15.5 nm (SB) and (NS): start, leave G25 to starboard, pass through GATE (G21/ R22), pass through GATE (G13/R14), leave Mark 1 to port, pass through GATE (G13/R14), pass through GATE (G21/ R22), leave G25 to port, finish. Mark 1 from GATE (G13/R14) 2.0 nm (SA), 1.0 nm (SB) and (NS).

Course 4 - 19.3 nm (SA), (SB) and (NS): start, leave G25 to starboard, pass through GATE (G21/R22), round R14 to port, round N2 (off Rattlesnake Shoal) to port, round R16 to starboard, pass through GATE (G21/R22), leave G25 to port, finish.

Course 4R - 19.3 nm (SA), (SB) and (NS): start, leave G25 to starboard, pass through GATE (G21/R22), round R16 to port, round N2 (off Rattlesnake Shoal) to starboard, round R14 to starboard, pass through GATE (G21/R22), leave G25 to port, finish.

- 8.2. The scheduled course and start times for each boat on each course will be posted on the official notice board no later than 2100 on the day prior to the scheduled race. The Course to be sailed will be announced prior to the warning of the race.
- 8.3. Placards showing the course to be sailed for each class and the direction to Mark 1 (if used) from gate marks will be displayed on the signal boat and announced on VHF 11 no later than the warning signal.

9. MARKS

The marks of the Course will be: Start/finish mark is an inflatable mark and a race committee vessel. Mark 1 for the (SA) class is an orange tetrahedron. Mark 1 for the (SB) and (NS) classes is a white tetrahedron. Government marks: G"25", G"21", R"22", G"15", R"16", G"13", R"14", G"11", R"12" and N"2" off Rattlesnake Shoal.

10. CHECK IN

Boats intending to race shall check in with the Race Committee via VHF channel 11 before their start time. After the first start, there will be no preparatory signals. Boats shall confirm the number of persons on board. A boat shall continue to check in until it has been acknowledged by the Race Committee.

11. THE START

- 11.1. The starting area will be in the area bounded by Rebellion Reach to the southwest and the access to Mt. Pleasant Channel G"1" to the northeast and FL R "130" at the access to the ICW/Sullivan Island Narrows to the east. (Approximately 32°46.00N and 79°52.50W). The ORC Circle 5 and the Pursuit Circle 6 will both be using the same start/finish line.
- 11.2. The starting line will be between a staff displaying an orange flag on a RC vessel that is at the starboard end of the starting line and an inflatable mark on the port end.
- 11.3. Pursuit style starting, boats will start according to their PHRF handicap. This changes Rule 26.
- 11.4. The race committee will use RRS 26 for the first boat to start. All other boats will start based on their assigned starting time, the RC will not display flags or make sounds. This changes RRS 26.

0930	Warning for 1st boat to start	Display class flag
0931	Preparatory Signal for 1st boat to start	Display of prep flag

0934	Preparatory flag removed for 1st boat	Prep flag removed
0935	Start of 1st boat	Class flag removed
	Starting times for boats following the 1st boat to start as published & posted	No other flags displayed

11.5. RRS 26 is changed by deleting the words “preparatory signal.” The preparatory signal is four (4) minutes before that boat’s starting time as identified in SI 11.6.

11.6. The Start Times for the Pursuit Class will be listed on the event document section of the [Charleston Race Week Yacht Scoring](#) and on the official notice board.

11.7. A boat starting later than 10 minutes after her starting signal will be scored Did Not Start (DNS) without a hearing. This change supplements RRS A4 and A5.3.

12. RECALLS

12.1. RRS 29.1 (Individual Recall) is changed. No “X” flag will be used. The race committee will make a sound signal for all boats who are on the course side (OCS) at their start and notify them via VHF channel 11. This changes RRS 29.1.

12.2. Failure of a boat to hear her recall notification and the timing and order of such hails or failure to hail will not be grounds for granting redress. This is an addition to RRS 62.1(a).

13. CHANGE OF THE NEXT LEG OF THE COURSE

The course configuration will not be changed. However, the race committee may shorten course at any mark of the course.

14. THE FINISH

14.1. The finish line will be in the vicinity of the harbor start which is the area bounded by Rebellion Reach to the southwest and the access to the Mt. Pleasant Channel G”1” to the northeast and FL R”130” at the access to the ICW/Sullivan Island Narrows to the east. (Approximately 32 46.00N and 79 52.50W)..

14.2. The finishing line will be between a staff displaying a checkered flag on the RC vessel at the port end and an inflatable mark to starboard.

15. PENALTY SYSTEM

Penalty declarations - A boat wishing to take a post-race penalty in accordance with SI 1.6 or wishes to retire after finishing shall complete the penalty declaration form available available online at [Charleston Race Week Yacht Scoring](#) before the end of protest time limit. Forms are available on line and may be emailed to scoring@charlestonraceweek.com. [NP][DP]

16. TIME LIMIT

16.1. All boats shall finish by 1600 on Friday and Saturday.

16.2. All boats shall finish by 1500 on Sunday.

16.3. Boats not finishing within the time limit will be scored TLE (Time Limit Expired) without a hearing. This change is added to RRS 35, 63.1, A5.1 and A5.2.

17. PROTESTS

17.1. Protest forms are available online at [Charleston Race Week Yacht Scoring](#). Protests and requests for redress or reopening shall be delivered there within the appropriate time

- limit and must include the name of the skipper of the boat, that person's email address, and phone numbers. This supplements RRS 61.2.
- 17.2. Protest time limit is 60 minutes after the race committee signal vessel of the appropriate circle docks. The race committee will make the number of sound signals corresponding to its circle number upon docking and post the docking time on the official notice board.
 - 17.3. Notices will be posted online at <https://yachtscoring.com/emenu.cfm?eID=12954>; no later than 30 minutes after the protest time limit to inform competitors of hearings in which they are parties or named as witnesses. Hearings will be held beginning at the time set forth in the posted notice in a virtual hearing to be held beginning at the time set forth in the posted notice using connection links to be provided by the hearing panel before the hearing time.
 - 17.4. For the purpose of RRS 64.4(b) the "authority responsible" is the measurer appointed by the Organizing Authority (Charleston Ocean Racing Association).
 - 17.5. Notices of protests by the race committee, the technical committee or protest committee will be posted to inform boats under RRS 61.1(b).
 - 17.6. Hearings conducted in accordance with the rules of RRS Part 5, Section B [Hearings & Decisions] will be virtual hearings and parties and witnesses to such hearings shall have access to a device that has internet accessibility with audio and video capability; parties and witnesses must use audio and video to appear before a hearing panel unless advised otherwise by the hearing panel. See *Information for Competitors* posted on the event website: [Charleston Race Week Yacht Scoring](#).
 - 17.7. Hearings conducted in accordance with RRS Part 5, Section C [Misconduct] shall be virtual hearings and parties, party representatives, and witnesses to such hearings shall have access to a device that has internet accessibility with audio and video capability; parties, their representatives and witnesses must use audio and video to appear before a hearing panel unless advised otherwise by the hearing panel.
 - 17.8. On the last scheduled day of racing a request for redress based on a protest committee decision shall be delivered no later than 30 minutes after the decision was posted. This changes RRS 62.2.
 - 17.9. If the race committee posts a list of boats scored OCS, ZFP, UFD, BFD, NSC or TLE on the official board before the protest time limit, a request for redress based on such a posted score shall be made no later than one hour after the protest time limit. This changes RRS 62.2.

18. PROTEST ARBITRATION

Arbitrations conducted in accordance with Appendix T [Arbitration] to the RRS shall be conducted virtually and parties to arbitrations shall have access to a device that has internet accessibility with audio and video capability; parties must use audio and video to appear before an arbitrator unless advised otherwise by the arbitrator. See *Information for Competitors* posted on the event website: [Charleston Race Week Yacht Scoring](#).

19. SCORING

19.1 All completed races will be scored. This changes RRS A2.1.

19.2 Boats scored TLE will be scored points equal to the number of boats finishing within the time limit plus two points by the race committee without a hearing. This shall not exceed the total number of boats in that class. This supplements RRS A4.1, A4.2, and A5

20. SAFETY REGULATIONS [DP][NP]

- 20.1. Each competitor is solely responsible for his own safety and, by participation, agrees to sail and use Charleston Harbor Resort and Marina facilities at his or her own risk. The Charleston Ocean Racing Association nor persons assisting with the conduct of races shall be responsible for damage or injury suffered during races or related activities.
- 20.2. A boat that retires from a race or leaves the course area without finishing shall notify the race committee as soon as possible. Failure to do so may result in protest.
- 20.3. A boat and its crew shall at all times keep clear of all commercial vessels and shall not maneuver in any manner which would cause a commercial vessel to be unable to maneuver its proper course or carry out its commercial functions in a normal manner. a.) A boat whose actions or maneuvers result in a danger signal (5 or more blasts) from commercial vessels shall be protested. b.) The penalty for breaking this rule shall be disqualification from the entire regatta. c.) If the wind velocity is low and it is apparent a boat cannot avoid an oncoming commercial vessel, it may start its engine and motor away from the oncoming vessel at an angle of 90 degrees or less. There shall be no forward movement on the course. It shall cut off its motor as soon as it is clear from the oncoming vessel. A boat using its engine in this manner shall inform the Race Committee of its actions upon returning to shore within the protest time limit.
- 20.4. There will be a courtesy announcement on the designated VHF channel 11 each morning and at the end of the day's racing to communicate expected commercial traffic needs to the fleets. Boats are reminded that Charleston Harbor and its approaches have a high level of commercial traffic.
- 20.5. Crew lists: Each boat shall provide the race committee a list of crew for each day of the regatta, before her preparatory signal. The number of persons sailing on each boat may change each day. You may email the list to info@charlestonraceweek.com.

21. RADIO/TELEPHONE COMMUNICATIONS [NP]

- 21.1. Race committee announcements will be over VHF Channel 11.
- 21.2. The race committee will broadcast its intentions for the day on VHF 11 at 0830.
- 21.3. The race committee will broadcast the course to be sailed and the direction to Mark 1 (if used) on VHF channel 11 before the warning signal. Failure to receive this notification shall not constitute grounds for granting redress. This change supplements RRS 60.1(b) and 62.1(a)
- 21.4. Competitors may call the race committee via cell phone: 443-795-1040.

22. PRIZES

- 22.1 One daily trophy will be awarded in each class for each day of racing. One overall trophy will be awarded in each class for every three boats entered up to a maximum of three trophies per class.
- 22.2 Jubilee Sportsmanship Perpetual Trophy will be awarded to the participant who has displayed outstanding examples of good sportsmanship during Charleston Race Week.

23. DISCLAIMER OF LIABILITY

- 23.1. Competitors participate in the regatta entirely at their own risk. (See RRS 3, Decision to Race). The Organizing Authority will not accept any liability for material damage or

personal injury or death sustained in conjunction with or prior to, during, or after the regatta.

- 23.2. The safety of a boat and its crew is the sole and inescapable responsibility of the skipper who shall ensure that the boat is fully sound, thoroughly seaworthy, and manned by an experienced and physically able crew. Neither the establishment of regulations or inspection of a boat in any way limits or reduces the complete and unlimited responsibility of the skipper.
- 23.3. Charleston Ocean Racing Association, Sponsors of the Charleston Race Week, and their employees and volunteers do not accept responsibility for the loss of life or injury to participants or others, or for the loss or damage to any vessel in any way or from any cause during or relating to this event.
- 23.4. The skipper shall be responsible for the conduct of his crew. In the event of a serious breach of conduct, the destruction of property or the failure to comply with a reasonable request of any race officer or committee member, the skipper will be responsible for all damages and the boat may be subject to protest which may include disqualification from the regatta.

24. PURSUIT RACE OFFICIALS

Event/Race Director:	Randy Draftz	rdraftz@charlestonyachting.com
Event PRO:	Taran Teaque	janetaranteague@gmail.com
Circle 6 RO:	Bruce Bingman	blocrunner@aol.com 443.795.1040
Chief Judge:	Sarah Ashton	ashtonsh1@me.com

PURSUIT COURSES 1, 1E, 1X • ILLUSTRATION C

Course 1 - 10.5nm (SA), (SB), and (NS):

Start, leave G25 to starboard, pass through GATE (G21/ R22), pass through GATE (G15/R16), pass through GATE (G21/R22) leave G25 to port, finish.



Course 1E - 13.5 nm (SA), (SB), and (NS):

Start, leave G25 to starboard, pass through GATE (G21/ R22), pass through GATE (G13/R14), pass through GATE (G21/R22) leave G25 to port, finish.



Course 1X - 16.5 nm (SA), (SB), and (NS):

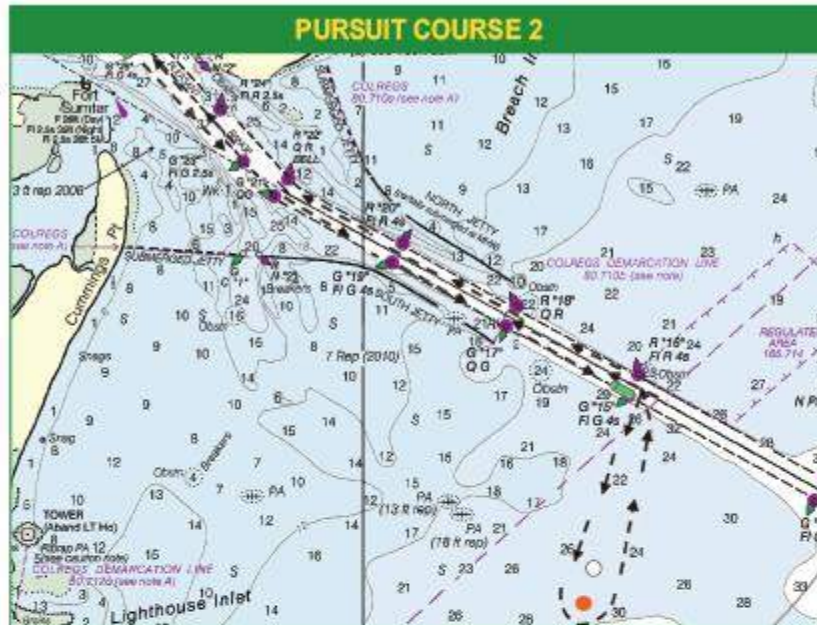
Start, leave G25 to starboard, pass through GATE (G21/ R22), pass through GATE (G11/R12), pass through GATE (G21/R22) leave G25 to port, finish.



PURSUIT COURSES 2 & 3 • ILLUSTRATION C

**Course 2 - 14.5nm (SA),
12.5nm (SB), and (NS):**

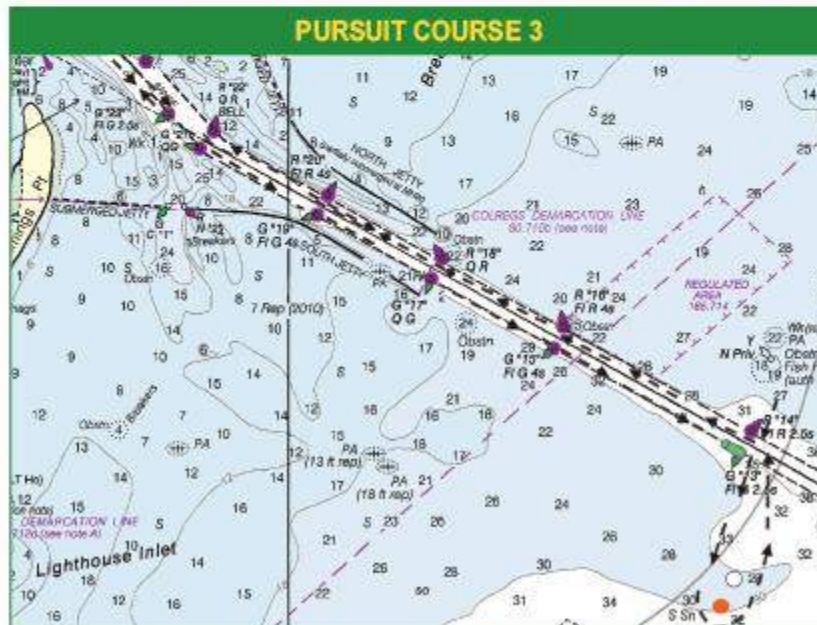
Start, leave G25 to starboard,
pass through GATE (G21/ R22),
pass through GATE (G15/R16),
leave Mark 1 to port, pass
through GATE (G21/R22),
leave G25 to port, finish.
**Mark 1 from GATE (G15/R16)
2.0nm (SA), 1.0nm (SB) and
(NS)**



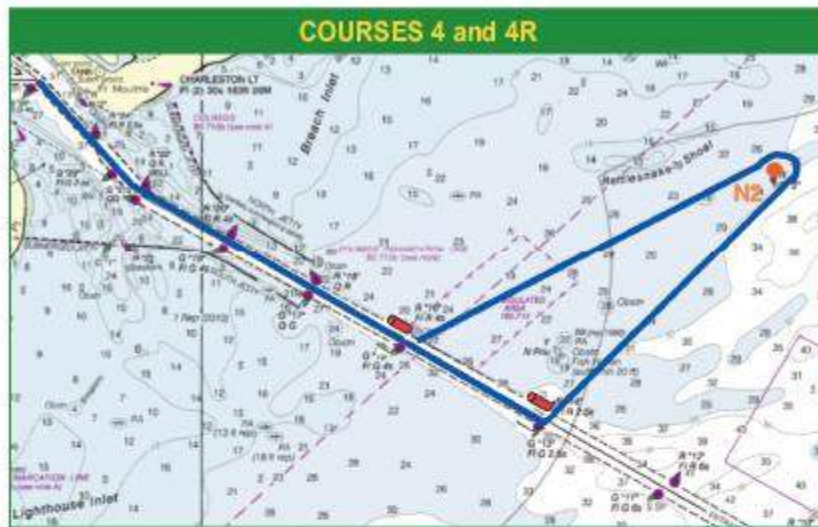
**Course 3 - 17.5nm (SA),
15.5nm (SB), and (NS):**

Start, leave G25 to starboard,
pass through GATE (G21/ R22),
pass through GATE (G13/R14),
leave Mark 1 to port, pass
through GATE (G13/R14), pass
through GATE (G21/ R22),
leave G25 to port, finish.

**Mark 1 from GATE (G13/R14)
2.0nm (SA), 1.0nm (SB) and
(NS)**



PURSUIT COURSES 4 & 4R • ILLUSTRATION C



Course 4 - 19.3 nm (SA), (SB), and (NS):
Start, leave G25 to starboard, pass through GATE (G21/ R22), round R14 to port, round N2 (off Rattlesnake shoal) to port, round R16 to starboard, pass through GATE (G21R22) leave G25 to port, finish.

Course 4R - 19.3 nm (SA), (SB), and (NS):
Start, leave G25 to starboard, pass through GATE (G21/ R22), round R16 to port, round N2 (off Rattlesnake shoal) to starboard, round R14 to starboard, pass through GATE (G21R22) leave G25 to port, finish.