

SAILING INSTRUCTIONS

Cape to Cape Challenge Cup XII

Saturday August 8th 2020 Version 1.1

Lewes Yacht Club Lewes, Delaware & CYCCM Cape May, New Jersey

1. Rules

This regatta will be governed by the current Racing Rules of Sailing (RRS), the prescriptions of the United States Sailing Association, the Notice of Race (except as any of these are altered by these Sailing Instructions) and by these Sailing Instructions.

1.1 Any questions in regard to these sailing instructions must be submitted in writing to the Race Committee Chairman at don@bland.com. A response will be posted on the Official Regatta Notice Board and C2C/Yacht Scoring website.

1.2 If there is a conflict between the NOR and these SI the SI will prevail.

2. Entries

Eligible boats may be entered by completing registration with the organizing authority and paying all fees.

3. Notice to Competitors

Notices to competitors will be posted on the official notice board located on the first floor of the Lewes Yacht Club (LYC) and C2C/Yacht Scoring website.

4. Changes in Sailing Instructions

Changes to the Sailing instructions will be posted and announced on VHF Channel 78 by 0930 on Saturday. RC will answer questions about the SI Saturday 0930 - 1000 on VHF 78. Due to Covid-19 restrictions there will not be a skippers meeting.

5. Signals Made Ashore

5.1 Signals made ashore will be displayed on the Club signaling mast located on the bay side of the upper deck of the LYC clubhouse.

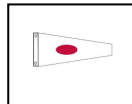
5.2 When flag AP is displayed ashore, '1 minute' is replaced with 'not less than 30 minutes' in the race signal AP.

6. Schedule of Races

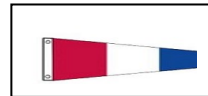
6.1 Saturday first signal at 1100 for non-spinnaker class. All other classes first signal will be at 1130. No starts after 1430. The course will be announced on VHF 78 by 0930 hours Saturday.

7. Class Flags

7.1 Signal flag "1" will be used for Spinnaker Class including J boats. Red dot on white

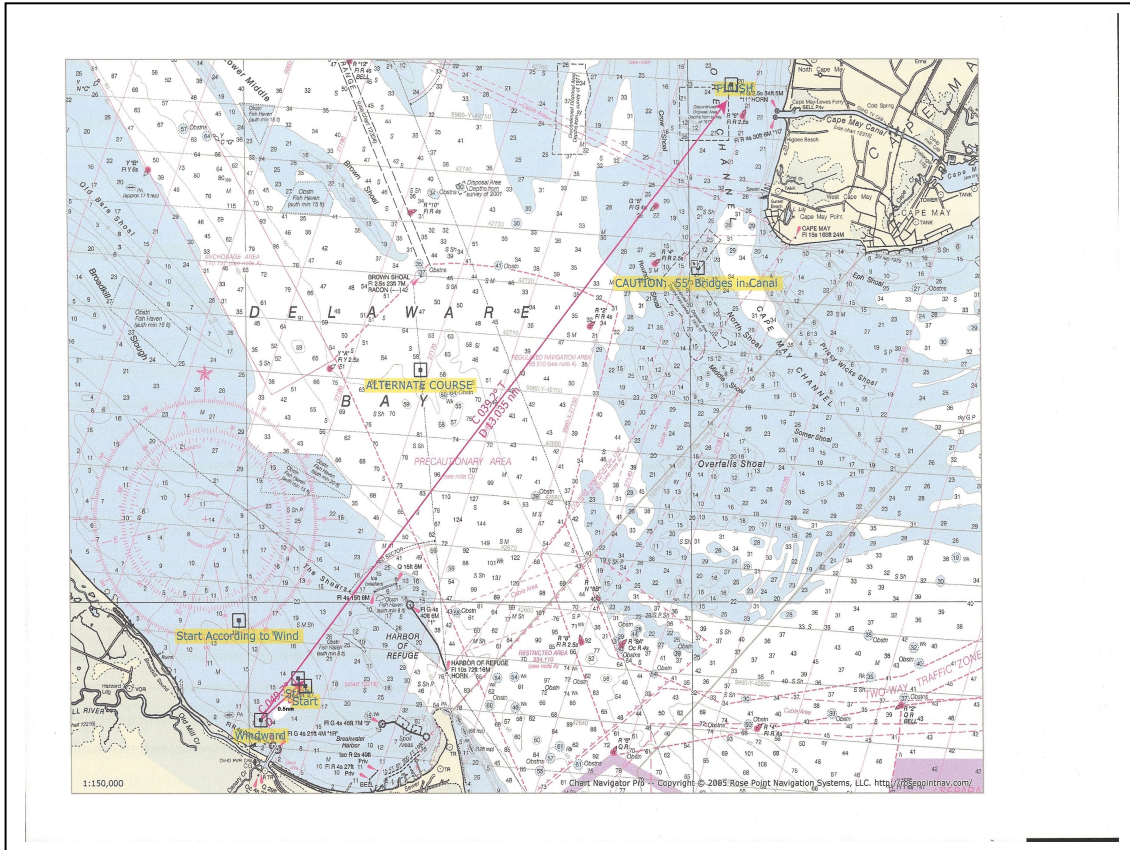


7.2 Signal Flag "3" will be used for Non-Spinnaker Class
Red white blue.



8. Reserved

9.2 Course “B” Alternate Course showing 0.5nm upwind leg.



9.3 The start for course A and B will be 0.5nm downwind from the weather mark located approximately at N38 48.343, W75 09.370. If the weather mark begins, ends, or bounds a leg of the course then how to round that mark (port or starboard) will be announced on VHF 78 before the first signal.

10. Marks

10.1 Weather mark will be a yellow shape.

11. Checking In

11.1 All boats that may compete in a day's race must check in with the RC boat before her fleet's first signal of that day.

12. The Starts

12.1 The start shall be between an orange flag on the RC boat and a red mark at the port end of the line. The start will be signaled in accordance with RRS 26.

There will be two starts, Non-spinnaker followed by all other classes. A boat that starts more than 10 min after her starting signal will be scored DNS/DNC without a hearing. This changes RRS A5.

13. Recalls

Individual recalls will be signaled in accordance with RRS 29.1. In addition the Race Committee will attempt to broadcast the sail number of each recalled boat on channel 78. If RRS 30.1 or 30.3 or 30.4 is in effect, boats which are OCS in the minute before the start may be notified before the starting signal. The following shall not be grounds for redress:

- a) Failure of the boat to receive or understand a recall broadcast.
- b) A boat's position in the sequence of broadcast numbers.

14. Reserved.

15. The Finish

The Finish line will be between a staff bearing an orange flag on a Race Committee Vessel and an Orange tetrahedron. The finishing line will be located off Cape May Beaches at approximately N38.55.599, W74.52.952 which is located off the CM beach West of 2 CM . The Finish line is to be crossed in the direction from the Prissywick gate.

16. Time Limits

16.3 Time limit for first boat in a class to finish will be 5 hours.

16.4 Subsequent boats must finish 1 hour after the first boat in its class to finish. Boats in that class arriving after that time will be scored TLE and be scored one point more than the last boat finishing within the time limit.

17. Penalties

Alternative penalty rules (RRS Appendix V) V1 and V2 are in effect .

18. Protests

18.1 The protesting boat shall display a red flag flown conspicuously from the backstay in accordance with RRS 61.1.

18.2 Protests shall be written on USSA forms and lodged with the Protest Committee within the Protest Time which will begin at the time of the docking of the Race Committee Signal boat and end 45 minutes thereafter. Docking time will be posted on the Official Notice Board located in the clubhouse.

18.3 Protest notices will be posted within 30 minutes after the end of the Protest Time limit to inform competitors where and when there is a hearing in which they are interested parties or witnesses.

18.4 The Protest Committee will hear protests in approximately the order of receipt.

19. Scoring

19.1 The Low Point Scoring System RRS Appendix A will be used. Scores will be separate by fleet spinnaker (including J boats) and non-spinnaker.

20. Radio Equipment

20.1 All boats shall carry a VHF radio capable of receiving and transmitting. A boat shall neither make nor receive radio transmissions while racing that are not available to all boats. The Race Committee will use VHF channel 78 for communications to the boats.

21. Safety

21.1 A boat which retires from a race shall notify the Race Committee on VHF channel 78 before leaving the course area. If a boat is not able to notify the Race Committee prior to departure from the course due to damage or injury she shall notify the Race Committee as soon as her situation safely allows.

21.2 This race is being conducted in a major commercial traffic area and across shipping lanes. Give way to ships and ferries that are sailing in channels and may have restricted maneuverability. Monitor ship to ship VHF channel 13. Remember the rule “ships much bigger than you always have the right of way”.

22. Responsibility

The responsibility for supervising this race is solely that of the Lewes Yacht Club who assumes no liability whatsoever in connection therewith. The responsibility of the Race Committee is to provide a start and to record times/position at a finish. The decision to start, continue or retire is the responsibility of the competitor.

23. Tides at Lewes.

Friday	08/07/20	1204 High	1808 Low
Saturday	08/08/20	1244 High	1853 Low

24. Prizes

Prizes will be awarded.