



# Bayview Yacht Club Centennial Anniversary Race

May 17<sup>th</sup>, 2015

## SAILING INSTRUCTIONS

### 1 RULES

The race will be governed by the rules as defined in the current "Racing Rules of Sailing" (RRS) and as modified by these sailing instructions. In the event of a conflict between the Notice of Race and these sailing instructions, the sailing instructions shall prevail (this changes RRS 63.7).

### 2 NOTICES TO COMPETITORS

Notices to Competitors including any changes to the sailing instructions will be posted on the Official Notice Board in the Mackinac Room by 1000 hours May 17, 2015.

### 3 SIGNALS MADE A SHORE

Signals made a shore will be displayed from the Race Committee Station on the balcony of the BYC "Commodores Room".

### 4 RACE SCHEDULE

One race is scheduled for Sunday, May 17, 2015. The warning signal for the first start will be at 1200 hours.

### 5 STARTING ORDER

<u>Sequence</u>	<u>Class</u>	<u>Class Flag</u>
Start 1	Ultimate 20	1
Start 2	PHRF C (PHRF JAM 156 and Higher)	2
Start 3	PHRF B (PHRF JAM 90 to 153)	3
Start 4	PHRF A (PHRF JAM 87 and Below)	4

- 5.1 All PHRF classes shall sail with jib and main (JAM) only. JAM ratings or equivalent will be used for the regatta.

### 6 THE COURSE

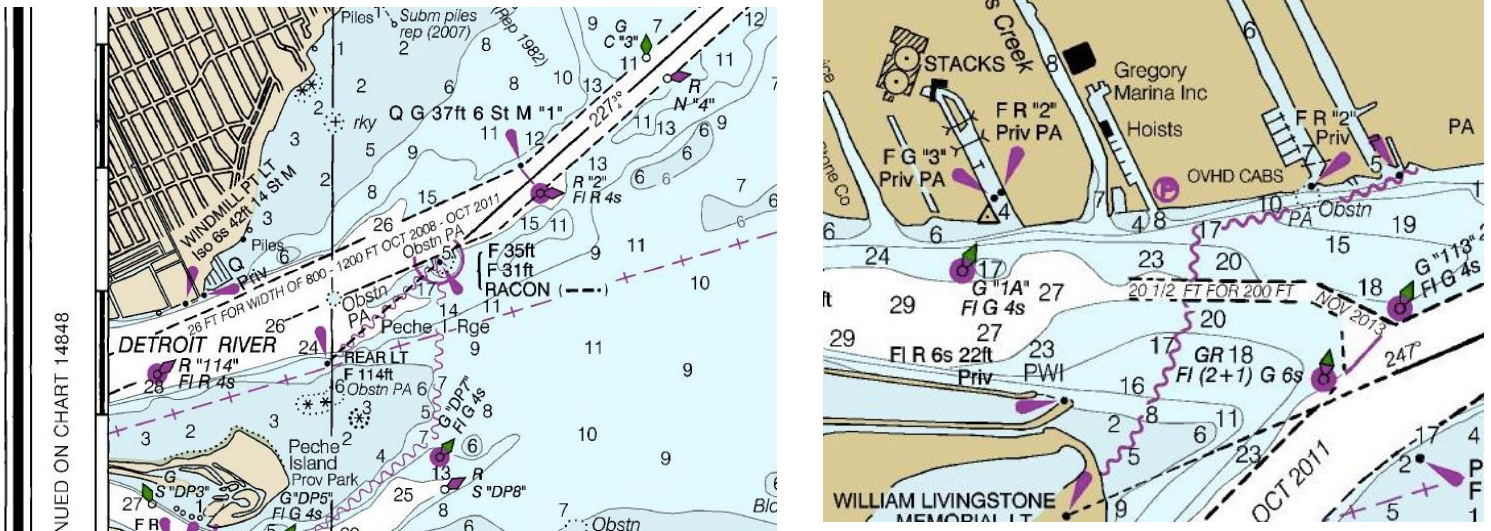
#### 6.1 Marks to Starboard - signaled by a GREEN cylinder shape displayed from the downstream end of the Race Committee Station.

The course will be from the start to Government Mark R2 in Lake St. Clair which shall be rounded to starboard, then to Government Mark G1A in the Detroit River which shall be rounded to starboard, keeping clear of the Start/Finish Line, then to the finish.

**6.2 Marks to Port - signaled by a RED cylinder shape displayed from the downstream end of the Race Committee Station.**

The course will be from the start to Government Mark G1A in the Detroit River which shall be rounded to port, then to Government Mark R2 in Lake St. Clair which shall be rounded to Port, keeping clear of the Start/Finish Line, then to the finish.

See chart insets for approximate location on the marks.



**NOT FOR NAVIGATION**

**6.3** The Race Committee may give a courtesy announcement of the course selected on VHF Channel 72 prior to the first start. The Race Committee may also hail, or announce the sail numbers of boats subject to individual recall. The failure to do so, an incorrect or late hail or announcement or the order in which sail numbers are hailed or announced shall not be grounds for redress. This changes RRS 62.1.

**7 SHORTENED COURSE BEFORE THE START**

**7.1** The Race Committee may shorten the course before the start of the race by displaying an "S" flag (blue rectangle on white field) prior to the start of the first class. In this event, competitors are instructed to sail a shortened course as described in Paragraph 7.3 or 7.4 below.

**7.2** In the event of a shortened course before the start, the Race Committee will set BYC Mark 1 which is a yellow inflatable buoy located at a bearing of approximately 095 degrees from the start/finish line at a distance of 0.8nm.

**7.3 Marks to Starboard - signaled by a GREEN cylinder shape displayed from the downstream end of the Race Committee Station.**

The course will be from the start to BYC Mark 1 Which shall be rounded to starboard, then to Government Mark G1A in the Detroit River which shall be rounded to starboard, keeping clear of the Start/Finish Line, then to the finish.

**7.4 Marks to Port - signaled by a RED cylinder shape displayed from the downstream end of the Race Committee Station.**

The course will be from the start to Government Mark G1A in the Detroit River which shall be rounded to port, then to BYC Mark 1 which shall be rounded to Port, keeping clear of the Start/Finish Line, then to the finish.

**8 THE START**

**8.1** Races will be started by using RRS rule 26 with the first warning signal at 1200 hours.

**8.2** Numeral boards corresponding to the class flags assigned in Paragraph 5 may be displayed from the Race Committee Station identifying the upcoming start.

**8.3** The starting line will be between the orange flag or shape displayed from the Race Committee Station on the balcony of the BYC "Commodores Room" and the nearby inflatable orange buoy in the Detroit River.

**9 THE FINISH**

The finish line will be between the orange flag or shape displayed from the Race Committee Station on the balcony of the BYC "Commodores Room" and the nearby inflatable orange buoy in the Detroit River.

**10 TIME LIMIT**

The time limit for each class to complete the course is two (2) hours after its start. Boats failing to finish within two (2) hours after its start shall be scored 'Did Not Finish' (DNF). (This changes rules 35, A4 and A5)

**11 PROTESTS AND REQUESTS FOR REDRESS**

Protests shall be delivered to the Race Committee no later than one hour after the last boat in its class has finished. The time and place of protest hearings, if any, will be notified by the Race Committee. At the Race Committee's discretion, arbitration may be available with a twenty (20%) percent penalty. Protest forms are available on line at <http://www.ussailing.org/racemgt/documents/ussapf.pdf>.

**12 SCORING**

Each boat shall be ranked by her corrected time in its class. The lowest corrected time wins. Corrected times in PHRF Classes shall be calculated using PHRF Time-on Time. The Ultimate 20 class will be scored using elapsed time.

## 13 AWARDS

13.1 Awards will be presented as soon as practicable after all boats have finished the race.

13.2 Awards will be presented for each class as follows: first, second, and third place flags will be awarded for classes having 5 or more boats registered, first and second place flags for classes having 4 boats registered, and a first place flag for classes having less than 4 boats registered.

## 14 RADIO COMMUNICATION

The Race Committee will monitor VHF Channel 72 and any communications with the competitors will occur on this channel.

## 15 RETIRING FROM THE RACE

A boat that retires from a race shall notify the Race Committee as soon as possible on VHF Channel 72

## 16 INTERFERENCE WITH COMMERCIAL SHIPPING

**Boats are required to stay clear of all Commercial Shipping Traffic, including Tug/Barge Combinations, Lakers and Commercial Passenger Vessels.** In addition, boats crossing the shipping channel are forbidden to interfere with major ships (Federal law 89-764). No restriction is placed on use of the water by other parties. Competitors therefore shall adhere to USCG Rule 18, which reads in part: "(b) A sailing vessel underway shall keep out of the way of: ... (ii) a vessel restricted in her ability to maneuver." Any boat not complying with this may be subject to protest by the Race Committee and may be reported to the Coast Guard. Infraction of this requirement is not subject to protest by another boat (this changes RRS 60.1).