



Organizer



ETCHELLS WORLDS 2015
HONG KONG • NOVEMBER 1-7
ROYAL HONG KONG YACHT CLUB

SAILING INSTRUCTIONS
FOR THE
INTERNATIONAL ETCHELLS CLASS
2015 WORLD CHAMPIONSHIP

Hong Kong, HKSAR

29 October to 7 November 2015

ORGANISING AUTHORITY

Hong Kong Sailing Federation

REGATTA CO-ORGANIZERS

Royal Hong Kong Yacht Club

Hong Kong Etchells Class Association

REGATTA OFFICIALS

Race Committee	International Jury
Ronan Collins (HKG), Event Chairman	Jim Capron (USA), Chairman
Kevin Wilson (AUS), Race Officer	Tom Sheppard (HKG)
Ross Wilson (AUS), Deputy Race Officer	Ruth Miller (ISV)
Brenda Davies (HKG), Assistant Race Officer, RHKYC Representative	Peter Johnson (GBR)
Greg Farrell, HKG Fleet Captain	Stephen Lam (HKG)
Jenny Cooper, Organising Committee	Neil Semple (GBR)



Co-Organizers

1 RULES

- 1.1 The regatta will be governed by the rules as defined in *The Racing Rules of Sailing 2013-2016* (RRS).
- 1.2 The Hong Kong Sailing Federation (HKSF) prescriptions set out in Attachment A to these Sailing Instructions (SIs) will apply.
- 1.3 The rules of the International Etchells Class Association (IECA) will apply except as modified by these SIs. All competitors shall meet the eligibility requirements of the International Etchells Class and shall comply with the ISAF Eligibility Code, Regulation 19.
- 1.4 The Championship is an ISAF Recognized Event and is sanctioned by the IECA as a Class A event.
- 1.5 In accordance with ISAF Regulation 20.5.1, no advertising shall be displayed pursuant to ISAF Regulation 20.3.2. The Organizing Authority (OA) may require all participating boats to display the event sponsor's advertising in accordance with ISAF Regulation 20.4.1.
- 1.6 Any Notice to Mariners that may have an impact on racing will be posted on the official notice board (ONB) and shall be deemed part of these SIs. In accordance with RRS 48.2, a boat shall comply with the Traffic Separation Scheme (TSS) regulations.
- 1.7 If there is a conflict between languages, the English text will take precedence.

2 NOTICES TO COMPETITORS

- 2.1 The Official Notice Board (ONB) will be located at the Regatta Venue (Clearwater Bay Marina) from 1 November until the start of racing on the last day. At all other times, it will be located outside the Main Bar at RHKYC Kellett Island.
- 2.2 Notices to competitors will be posted on the ONB.
- 2.3 When possible, notices will also be posted online at www.2015.etchellsworlds.org.

3 CHANGES TO SAILING INSTRUCTIONS

- 3.1 Any change to the SIs will be posted before 08:00 hours on the day it will take effect, except that any change to the schedule of races will be posted by 20:00 hours on the day before it will take effect.

4 SIGNALS MADE ASHORE

- 4.1 Signals made ashore will be displayed at the flagpole located at the Regatta Venue.
- 4.2 When flag AP is displayed ashore, '1 minute' is replaced with 'not less than 60 minutes' in the race signal AP. This changes RRS Race Signals.

5 REGISTRATION

- 5.1 All registration requirements, including payment of all class and event fees, boat and sail measurement, and presentation of original Hull and Sail Measurement Certificates, are required to be completed by 16:00 hours on Sunday 1 November.
- 5.2 Bow numbers and event sponsor's advertising will be provided and fitted by the OA.

6 SCHEDULE OF RACES

- 6.1 Dates of racing:

Date	Time	Event
Saturday 31 October	18:30 – 19:00	Skippers' Meeting at RHKYC Kellett Island
	19:00	Opening Reception at RHKYC Kellett Island
Sunday 1 November	08:00 – 10:00	Crew Weigh-In at Clearwater Bay Marina
	13:00	Practice Race, Warning Signal
Monday 2 November	11:00	Race Day 1 – First Warning Signal
Tuesday 3 November	11:00	Race Day 2 – First Warning Signal
Wednesday 4 November	11:00	Race Day 3 – First Warning Signal
	16:30 – 18:30	Crew Reweigh at Clearwater Bay Marina
Thursday 5 November	11:00	Race Day 4 – First Warning Signal
Friday 6 November	11:00	Race Day 5 – First Warning Signal
Saturday 7 November	10:00	Race Day 6 – First Warning Signal
	19:00	Prizegiving at RHKYC Kellett Island

- 6.2 Nine races are scheduled and more than one race may be sailed on any race day.
- 6.3 The Class International Governing Committee members present may permit the Race Committee to deviate from the above schedule.

6.4 When more than one race will be held on the same day, the warning signal for each succeeding race will be made as soon as is practicable. To alert boats that another race will begin soon:

- (a) flag L will be displayed at the finish of the previous race; and
- (b) the orange starting line flag will be displayed with one sound signal at least 5 minutes before a warning signal is made.

6.5 No warning signal will be made after 15:00 hours on Saturday 7 November, unless posted by 20:00 hours on Friday 6 November. In the case of one or more general recall(s) when the initial warning signal was made prior to 15:00 hours, the Race Committee may display subsequent warning signals after that time. This exception will not apply for a race that is postponed or abandoned.

7 CLASS FLAG

7.1 The class flag will be the Etchells Class insignia on a white background.

8 RACING AREA AND VENUE

8.1 The races will be sailed on the waters around The Ninepins, southeast of Clearwater Bay as shown in Attachment B.

8.2 All boats will be initially launched at RHKYC Kellett Island and then sailed (or towed by the OA if a boat takes advantage of the offer of towing by the OA) to Clearwater Bay Marina (the Regatta Venue) as shown in Attachment B. Throughout the regatta, all boats shall be berthed at Clearwater Bay Marina.

8.3 On the last day of racing it is anticipated that all boats will sail back to Kellett Island after racing, and arrangements will be made by the OA to facilitate transport of equipment left at Clearwater Bay Marina back to Kellett Island.

9 THE COURSES

9.1 The diagrams in Attachment C show the course configuration, including the order in which marks are to be passed, and the side on which each mark is to be left. The approximate length of the windward legs will be 2 nm.

9.2 No later than the warning signal, the Race Committee may display the approximate compass bearing from the starting line to Mark 1.

10 MARKS

- 10.1 Marks 1, 3P and 3S will be large black inflatable buoys. Sponsors' advertising may be attached to these marks.
- 10.2 Mark 2 will be a white cylindrical buoy.
- 10.3 New marks, as provided in SI 13.1, will be large orange squared cone buoys, except when a gate is moved, only one mark of the gate will be different.
- 10.4 Starting marks will be race committee boats.
- 10.5 Finishing marks will be a race committee boat at the starboard end of the line and either an orange cylindrical buoy or another race committee boat at the port end of the line.

11 AREAS THAT ARE OBSTRUCTIONS

- 11.1 Anchored commercial vessels, construction work areas and buoys laid around them shall be considered prohibited zones and obstructions. See SI 1.6.
- 11.2 Commercial vessels underway, of over 40 metres in length, and vessels engaged in towing shall be considered to be a "Moving Prohibited Zone" and obstruction as follows:
- Ahead of the vessel, 200 metres or two lengths of the vessel, whichever is greater. For a vessel towing, 100 metres.
 - Abeam of the vessel, 100 metres of two widths of the vessel, whichever is greater.
 - Astern of the vessel, 50 metres.
- 11.3 Boats shall not enter any prohibited zone.
- 11.4 Boats shall keep clear of commercial traffic at all times.

12 THE START

- 12.1 Races will be started using RRS 26.
- 12.2 The starting line will be between staffs displaying orange flags on the starting marks.
- 12.3 A boat starting later than 10 minutes after her starting signal will be scored Did Not Start without a hearing. This changes RRS 63.1, A4.1 and A5.
- 12.4 If flag U has been displayed as the preparatory signal, no part of a boat's hull, crew or equipment shall be in the triangle formed by the ends of the starting line and the first mark during the last minute before her starting signal. If a boat breaks this rule and is identified, she shall be disqualified without a hearing but not if the race is restarted or resailed or postponed

or abandoned. This changes RRS 26 *Starting Races*. When flag U is used as the preparatory signal, RRS 29.1 *Individual Recall* does not apply. The scoring abbreviation for a flag U penalty is UFD. This changes RRS A11 *Scoring Abbreviations*.

12.5 The Race Committee will attempt to notify OCS, UFD and BFD boats by bow number or sail number by radio on VHF channel 72. Failure of equipment, failure to hear a hail, delay in hailing or the order in which hails are given will not be grounds for redress. This changes RRS 62.1(a).

12.6 A race committee boat stationed near Mark 1 will display the bow numbers of boats that have violated RRS 30.3 or SI 12.4. Other race committee boats may also be used along the first windward leg for such display. Boats identified under this instruction shall promptly leave the race course and not interfere with boats still racing.

13 CHANGE OF THE NEXT LEG OF THE COURSE

13.1 To change the next leg of the course, the Race Committee will lay a new mark (or move the finishing line) and remove the original mark as soon as practicable. When in a subsequent change a new mark is replaced, it will be replaced by an original mark.

13.2 Except at a gate, boats shall pass between the race committee boat signaling the change of the next leg and the nearby mark, leaving the mark to port and the race committee boat to starboard. This changes RRS 28.

14 THE FINISH

14.1 The finishing line will be between staffs displaying orange flags on the finishing marks when they are both race committee boats, or will be between a staff displaying an orange flag on the finishing mark at the starboard end and the course side of the port-end finishing mark.

15 PENALTY SYSTEM

15.1 The penalty for breaking a rule of Part 2 shall be a One-Turn Penalty (one tack and one gybe in the same direction) except that for infringements occurring within the Zone as defined in the RRS shall be a Two-Turns Penalty (two tacks and two gybes in the same direction). This changes RRS 44.1 and 44.2.

15.2 A boat that has taken a penalty or retired under RRS 44.1 shall complete an acknowledgement form at the Clearwater Bay Regatta Office within the protest time limit. On the last day of the regatta acknowledgement forms will be available at the RHKYC Kellett Island Regatta Office and shall be delivered there within the protest time limit.

15.3 An International Jury will be appointed in accordance with RRS 91(b).

16 TIME LIMITS

16.1 The time limit for Course 1 will be 4 hours from the starting signal and for Course 2 will be 3 hours from the starting signal. If one boat finishes within the time limit, then the race will stand.

16.2 If no boat has passed the first windward mark one hour after the starting signal, the race shall be abandoned.

16.3 Boats failing to finish within 60 minutes after the first boat sails the course and finishes will be scored Did Not Finish without a hearing. This changes RRS 35, A4 and A5.

17 PROTESTS AND REQUESTS FOR REDRESS

17.1 Protest forms are available at the Clearwater Bay Regatta Office. Protests and requests for redress or reopening shall be delivered there within the appropriate time limit. On the last day of the regatta protest forms will be available at the RHKYC Kellett Island Regatta Office and shall be delivered there within the appropriate time limit.

17.2 The protest time limit is 90 minutes after the last boat has finished the last race of the day or the Race Committee signals no more racing today, whichever is later. On the last day of racing the protest time limit will be 150 minutes after the last boat has finished the last race of the day.

17.3 Notices will be posted no later than 30 minutes after the protest time limit to inform competitors of hearings in which they are parties or named as witnesses. Hearings will be held in the protest room, located at the Clearwater Bay Regatta Centre (or on the last day of the regatta in a room at Kellett Island to be notified on the ONB), beginning at the time posted.

17.4 Notices of protests by the Race Committee, Protest Committee or Jury will be posted on the ONB to inform boats under RRS 61.1(b).

17.5 Prior to a protest hearing and with the permission of the International Jury, a boat that has broken a rule of Part 2 of the RRS and has not complied with the requirements of RRS 31 or 44.1, may accept a 40% place penalty, calculated on the number of boats entered rounded to the nearest whole number (rounding 0.5 upwards), except that she shall not be scored worse than DNF. The penalty for a boat that has caused injury, serious damage or gained a significant advantage from her breach shall be to retire.

-
- 17.6 For infringements of the rules other than Part 2, the International Jury may award a lesser penalty than DSQ.
- 17.7 For the purpose of RRS 64.3(b), the 'authority responsible' is the Class International Governing Committee.
- 17.8 Breaches of SI 5.2, 15.2, 19, 20.1, 20.2, 24, 25, 26 and 27.1 will not be grounds for protest by a boat. This changes RRS 60.1(a). Penalties for these breaches may be less than disqualification if the International Jury so decides.
- 17.9 On the last day of the regatta:
- (a) a request for reopening a hearing shall be delivered within the protest time limit if the party requesting reopening was informed of the decision on the previous day;
 - (b) a request for reopening a hearing held on the last day shall be delivered no later than 30 minutes after the party requesting reopening was informed of the decision on that day;
 - (c) the time limit to request redress based upon an action or omission of the Race Committee or International Jury shall be 30 minutes after the final results are posted. This changes RRS 62 and 66.
- 17.10 Decisions of the International Jury will be final as provided in RRS 70.5.
- 17.11 Parties to a protest involving a rule of RRS Part 2 or Rule 31 may be invited to attend an arbitration hearing. At the posted time, one designated representative from each boat will testify before the arbitrator. No witnesses will be allowed.
- 17.12 After hearing the testimony of each representative, the arbitrator shall make one of the following designations;
- (a) There was no rule broken or the protest is found invalid. If the protestor agrees, the protest is then withdrawn and cannot be reopened or appealed.
 - (b) There was a rule broken by one or more of the parties involved. The boats(s) that may have broken a rule may take a scoring penalty as provided in SI 17.5.
- If the penalty is accepted by the offending boat and the protestor agrees, the protest is then withdrawn and cannot be reopened, redressed or appealed. A boat that accepts this penalty cannot be penalized further in respect of the incident in a protest hearing - RRS 64.1(b) will apply.

- (c) Direct that the protest be submitted to the jury for a hearing.

This changes RRS 63.1.

18 SCORING

- 18.1 The Low Point System of RRS Appendix A will apply.

- 18.2 Six races are required to be completed to constitute a series.

19 SAFETY REGULATIONS

- 19.1 Each crew member shall wear a personal flotation device (PFD) to the minimum standard EN 393 5 (Level 50), or USCG Type III, or AUS PFD 1 at all times whilst afloat. The PFD shall have a whistle attached.

- 19.2 In addition to the equipment required to be carried in accordance with Etchells class rule C.5, the following equipment shall be carried:

- (a) Buoyant rescue quoit with 15 metres of line or lifebuoy with 30 metres of line;
- (b) Flares – 2 red and 2 orange;
- (c) Compass and chart of area (approaches to Hong Kong - suitable charts will be available at registration);
- (d) Water – a minimum of 2 litres per person; and
- (e) an operating VHF radio as per SI 27.

- 19.3 Each boat shall check-out before racing by one crew member signing the tally sheet at the tally control point located at the Clearwater Bay Regatta Office. Competitors shall check-in promptly on returning to shore after racing, by one crew member signing the tally sheet at the tally control point.

- 19.4 Boats shall sail past the Race Committee Signal Boat at the commencement of the day's sailing by passing close aboard on starboard tack and hailing her bow number. When a boat has been recognized, the Race Committee will hail the boat's bow number. Any boat that fails to comply with this rule may be scored DNS without a hearing. This changes RRS 35 A4 and A5.

- 19.5 A boat that retires from a race shall notify the Race Committee as soon as possible.

- 19.6 No boat shall leave Clearwater Bay Marina unless flag D is displayed on the flagpole.

20 REPLACEMENT OF CREW OR EQUIPMENT

- 20.1 Substitution of competitors will not be allowed without prior written approval of the International Jury, and such requests shall be submitted to the Race Committee for verification of eligibility and crew weight of the substitute crew. This changes class rule C.2.1.
- 20.2 After measurement until completion of racing, no boat, sail or any item of measured equipment shall be removed from RHKYC or Clearwater Bay Marina (save for the purpose of travelling between the two as specified in clause SI 8.2) without being posted on the Official Equipment Sign-Out Sheet on the ONB. It is the sole responsibility of each skipper to ensure proper recording.
- 20.3 After measurement until completion of racing, no sail shall be recut or altered. Repairs to sails pursuant to all applicable rules are permissible only upon written approval of the International Jury. All such sails may be subject to re-measurement on completion of repairs.
- 20.4 Substitution of damaged or lost equipment will not be allowed unless authorized by the International Jury. Requests for substitution shall be made to the Jury at the first reasonable opportunity.

21 EQUIPMENT AND MEASUREMENT CHECKS

- 21.1 A boat or equipment may be inspected at any time for compliance with the class rules and SIs. On the water, a boat can be instructed by a race committee equipment inspector, measurer or the International Jury to proceed immediately to a designated area for inspection.

22 CREW WEIGHING

- 22.1 The weights and total combined crew weight of each crew including the skipper shall be determined prior to racing and the total combined weight of crewmembers for each boat will be posted on the ONB.
- 22.2 Each crewmember on each boat shall be reweighed together at the Clearwater Bay Marina Regatta Office on Wednesday 4 November 2015 between the hours of 16:30 and 18:30 or as adjusted by the OA, to ensure compliance with class rule C.2.2. Crews that fail to reweigh by the designated time or fail to make the weight limit by the designated time shall be scored DNS for all races sailed that day and for all subsequent races until such time as they comply with class rule C.2.2. The Race Committee may approve an extension of time in extenuating circumstances, and such requests are to be submitted in writing to the Race Committee.

-
- 22.3 Crews shall be weighed wearing light clothing, the minimum being outerwear shorts and T-shirt.
- 22.4 Crew substitutions shall not be permitted for the purpose of making the weight limit.
- 22.5 Weighing scales will be available on each race day in the Clearwater Bay Regatta Office from 08:00 to 10:00 hours and after racing.

23 OFFICIAL BOATS

- 23.1 Official boats will be marked as follows:

Judges White flag with JURY in black letters

Race Committee White flag with RC in black letters

Measurer White flag with black letter M

24 COACH AND SUPPORT BOATS

- 24.1 Coach and support boats must be registered with the OA prior to acting as a coach or support boat and shall be clearly marked with the nationality of the boats they are supporting on the engine cowling, or in some other prominent position at all times.
- 24.2 All registered coach and support boats must carry on board and operate while on the water a marine band VHF radio capable of transmitting and receiving on the normal international channels, and agree to assist the Race Committee if directed to do so.
- 24.3 Competitors shall have no communication with, and boats shall not be tied to, coach or support boats from the first warning signal of the day (or any other time the OA considers appropriate) until racing has been concluded for the day. Between races, coach and support boats shall not approach, communicate with or transfer provisions or equipment to or from their supported boats unless in a medical or emergency requirement threatening the health of the crew or the flotation of the boat and only with a report to the Race Committee as soon as practicable.
- 24.4 Registered coach and support boats and their personnel shall stay at least 100 metres below the starting line from the time of the preparatory signal until 5 minutes after the start of any race. After this time, coach and support boats may then proceed parallel to the course on the starboard side of the course facing the wind at a distance of at least 100 metres outside areas where boats are racing. Coach and support boats shall not go above the weather marks of the Course 1 finishing line or below the leeward marks or the Course 2 finishing line at any other time while boats are racing.

24.5 Any breach of SI 24.1, 24.2, 24.3 or 24.4 by a coach or support boat may result in a penalty being applied to any or all boats serviced by that coach or support boat. The penalty may be disqualification or some other penalty as determined by the International Jury.

24.6 Coach and support boats shall, when requested by the Race Committee, tow or assist boats not associated with them. Coach and support boats will monitor VHF channel 72 and shall follow all instructions from the Race Committee.

25 BERTHING & HAUL-OUT RESTRICTIONS

25.1 All boats shall be afloat before 13:00 hours on Sunday 1 November 2015 and shall not be hauled out during the regatta except with and according to the terms of prior written permission of the Jury.

26 PLASTIC POOLS

26.1 Plastic pools or their equivalent shall not be used around competing yachts between the close of registration and the end of the regatta.

27 RADIO COMMUNICATION

27.1 All boats must carry a marine band VHF receiver capable of receiving normal international channels. A radio check will be made with each boat on VHF channel 72 on the way out to the race course at least once during the regatta. Boats must use the radio to report retirement from racing and may use the radio to request assistance in an emergency. No other transmissions are permitted by competing yachts during each racing day from the first warning signal until the end of the last race of the day.

27.2 The Race Committee may use the radio to advise competitors of race information.

27.3 The use of mobile/cell phones or any device capable of sending and/or receiving external electronic communication and/or connecting to the internet is prohibited after the first warning signal (or any other time considered appropriate by the OA) on each race day until the boat has completed its day's racing, except as provided in SI 27.1 or in an emergency threatening the safety of any member of the crew or the flotation of the boat.

28 PRIZES

28.1 Prizes will be given as follows:

- i) The World Championship Perpetual Trophy will be awarded to the overall winner.
- ii) Perpetual trophies will also be awarded to the individual race winners of races one through nine, the Masters' Division winner, the Seniors' Division winner, the Grandmasters' Division winner, the Bill Munster Sportsmanship Trophy and the Corinthian Cup.
- iii) Keeper trophies will be awarded to the first ten finishers overall and to the other race winners. Other prizes may be awarded at the discretion of the OA.

29 DISCLAIMER OF LIABILITY

29.1 Competitors participate in the regatta entirely at their own risk. It is the competitor's decision to enter or to start or continue in any race. Competitors' attention is drawn to RRS Fundamental Rule 4, which states: "The responsibility for a boat's decision to participate in a race or to continue racing is hers alone."

29.2 The OA (HKSF) and co-organizers (RHKYC and HK Etchells Class Association) are not responsible for the seaworthiness of a yacht whose entry is accepted or the sufficiency or adequacy of its equipment. The Race Committee, the sponsors, the OA, the co-organizers and their employees servants and agents will not accept any liability for material damage or personal injury or death sustained in conjunction with, prior to, during or after the regatta.

30 INSURANCE

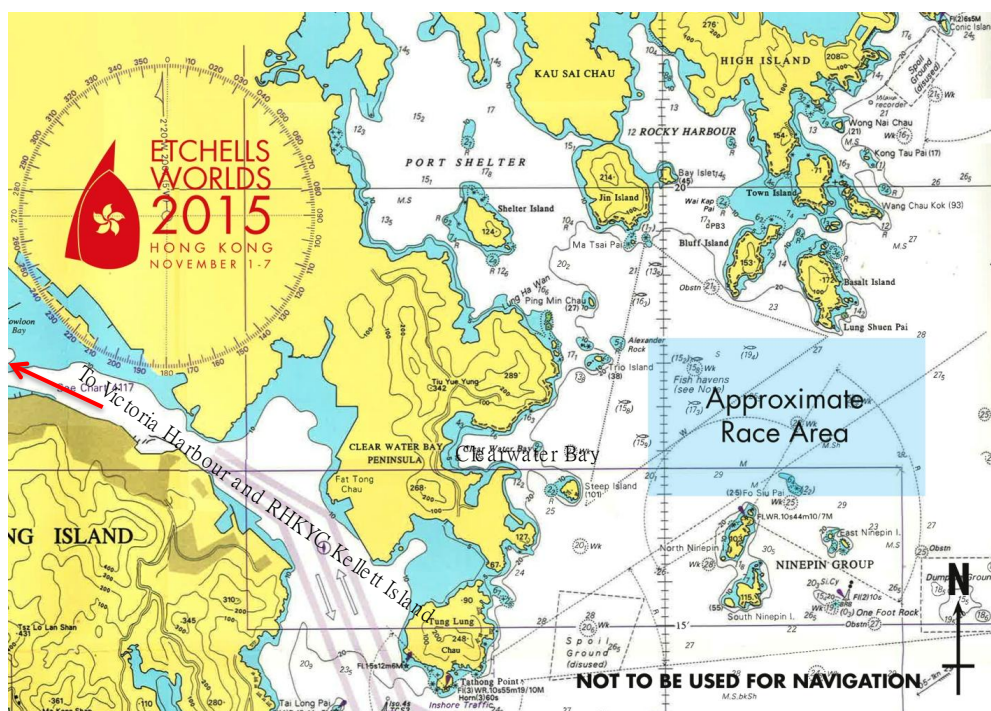
30.1 Each participating boat shall be insured with valid third-party liability insurance with a minimum cover of HKD 1million per event or the equivalent, as required by Hong Kong law.

Attachment A – HKSF Prescriptions

The HKSF prescriptions to the Racing Rules of Sailing **set out in this Attachment** shall apply:

Rule 67 Damages:

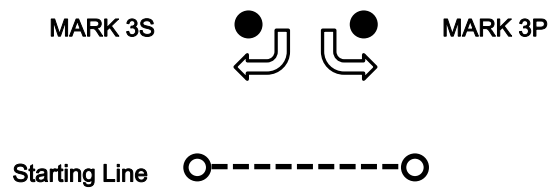
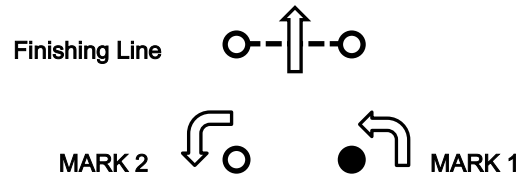
- 1 No claim for damages arising from breaches of these rules or the sailing instructions shall be adjudicated upon by any race committee or appeal authority, but shall be subject to the jurisdiction of the courts.
- 2 A boat which acknowledges infringing a rule by retiring or taking a penalty does not thereby admit liability for damage.
- 3 The findings of fact and decisions of protest committees shall be relevant only to the purposes of the ISAF Racing Rules of Sailing and shall not be referred to in any proceedings for damages without the written consent of the protest committee.
- 4 Notwithstanding 3 above, any owner of a boat may be liable for damages arising from a breach of these rules and may be subject to limitations under the Merchant Shipping Ordinance or related ordinances or regulations of the laws of Hong Kong.

Attachment B - Racing Area and Venue Location

Attachment C - The Courses

Course 1

Start – 1 – 2 – 3P/3S – 1 – 2 – 3P/3S – Finish



Course 2

Start – 1 – 2 – 3P/3S – 1 – 2 – Finish

