

	81st AYC Fall Series October 2-3 and 9-10, 2021 Organizing Authority: Annapolis Yacht Club Annapolis, Maryland, USA http://www.annapolisyc.com/racing/regattas
	SAILING INSTRUCTIONS inc. Amendment No.1
<p><i>The notation '[DP]' in a rule in the sailing instructions (SIs) or notice of race (NoR) means that the penalty for a breach of that rule may, at the discretion of the protest committee, be less than disqualification. The notation '[NP]' in a rule of the SIs or NoR means that a boat may not protest another boat for breaking that rule. This changes RRS 60.1(a).</i></p>	

1 RULES

- 1.1 The regatta will be governed by the rules as defined in The Racing Rules of Sailing (RRS).
- 1.2 [DP] For ORC only, the "Nearshore" category of the US Sailing Safety Equipment Requirements (available at <https://www.ussailing.org/competition/offshore/safety-information/ser-world-sailing-special-regulations>) will apply.
- 1.3 J/105 Class Rules are modified by Article IX of the local J-105 Fleet-3 Article/Rules. This event is designated a Level 1A event. J/105 Fleet-3 Articles/Rules can be found at <https://www.j105fleet3.org/rules>

2 CHANGES TO SAILING INSTRUCTIONS

- 2.1 Any change to the SIs will be posted no later than 2 hours before the first scheduled warning signal on the day it will take effect, except that any change to the schedule of races will be posted by 2000 on the day before it will take effect.

3 COMMUNICATIONS WITH COMPETITORS

- 3.1 Notices to competitors will be posted on the official notice board which is electronic and located at: <https://yachtscoring.com/emenu.cfm?eID=14304>.
- 3.2 The race office can be reached by telephone at 410-858-4964 or by email at raceoffice@annapolisyc.org. Forms can be found online at <https://www.annapolisyc.com/racing/raceoffice>.
- 3.3 On the water, the race committee intends to monitor and communicate with competitors via VHF radio on channel 72 for the Bay Courses and Channel 74 for the River Course (Oct 9). This includes announcements and confirmation of race committee signals before, during, and after racing.

4 CODE OF CONDUCT

- 4.1 [DP] Competitors and support persons shall comply with reasonable requests from race officials.

5 SIGNALS MADE ASHORE

- 5.1 Signals flown ashore will be flown from flagpole at the AYC Clubhouse.
- 5.2 When flag AP is displayed ashore, the approximate time of the next warning signal will be announced to all competitors before it is removed.










6 SCHEDULE OF RACES

- 6.1 The scheduled time of the warning signal for the first race of the day is 1100.
- 6.2 For Fall Series 1 on October 2 and 3:
 - (a) Classes racing: J/30 and J/70
 - 6.2.a.1 5 races using drop marks courses are scheduled. A maximum of 3 races per day will be sailed.
 - 6.2.a.2 No warning signal will be made after 1530 on Sunday.
- 6.3 For Fall Series 2 on October 9-10:

- (a) River Course (Saturday Only)
 - 6.3.a.1 Classes racing: Alerion 28, Harbor 20
 - 6.3.a.2 3 races using drop marks courses are scheduled.
 - 6.3.a.3 No warning signal will be made after 1530.
- (b) Bay Course (Sat and Sun)
 - 6.3.b.1 Classes racing: ORC, J/105, J/35, and ORC Cruiser
 - 6.3.b.2 On Saturday, up to 2 races are scheduled. On Sunday, one government mark race is scheduled.
 - 6.3.b.3 No warning signal will be made after 1530 on Sunday.

7 CLASS FLAGS

7.1 The class flags are:

Class		Class flag	Class		Class flag
J/70	6		ORC I	1	
J/30	D		ORC II	2	
Harbor 20	W		ORC III	3	
J/35	K		ORC Cruiser	Green	
J/105	4				

7.2 Boats in ORC Classes shall clearly display their class flags at the stern.

8 RACING AREA

- 8.1 For Fall Series 1, the racing area will be Chesapeake Bay off the mouth of the Severn River.
- 8.2 For Fall Series 2, the racing area will be the Severn River east of the USNA for Alerion 28 and Harbor 20 Classes. For ORC, J/105, J/35, and ORC Cruiser Classes, the racing area will be the Chesapeake Bay off the mouth of the Severn River.
- 8.3 No later than 120 minutes prior to the first scheduled warning signal, the race committee will post the approximate intended location of the starting area on the notice board.
- 8.4 Approximately 60 minutes prior to the first scheduled warning signal, the race committee will announce the approximate location of the starting area on VHF radio.

9 THE COURSES

- 9.1 For drop marks races, see SI Attachment 1. For the government marks race, see SI Attachment 2.
- 9.2 Prior to the warning signal, the race committee signal vessel will announce on VHF radio the course to be sailed, the approximate distance between the leeward and windward marks, and the approximate compass bearing of the first leg of the course.
- 9.3 Prior to the warning signal, the race committee signal vessel may announce on VHF radio that the first mark of the course will be a change mark (see SI 10.1(d)).

10 MARKS

10.1 For all drop marks courses:

- (a) The starting marks and mark 1a will be lime green cylinders.
- (b) The finishing mark will be a lime green cylinder.
- (c) All other marks of the course will be orange cylinders.
- (d) Change marks used in accordance with SI 13 will be orange cylinders with a dark colored band.

10.2 For Fall Series 2 government marks race:

- (a) The rounding marks will use CBYRA Region III Standard Race Marks as described SI Attachment 2.
- (b) Government marks “1AH” (off Tolly Point), R“4” (off Greenbury Point), Thomas Point Light, and the Bloody Point Bar Warning Light shall be passed on the channel side at all times.

10.3 A race committee starting or finishing vessel may set a stand-off buoy. When present, this stand-off buoy, the line attaching it to the race committee vessel, and the race committee vessel are all part of the starting or finishing mark.

11 THE START

11.1 Approximately 120 minutes before the warning signal, the race committee will post the starting order for the first race of the day on the notice board.

11.2 Races will be started using RRS 26 for the Bay Course of Fall Series 2. Fall Series 1 and the River Course for Fall Series 2 will use App U, audible sound signals.

11.3 Prior to the warning signal, the race committee will announce the next class to start on VHF radio.

11.4 The starting line will be between the staff or halyard displaying an orange flag on the race committee signal vessel at the starboard end, and either the course side of the starting mark or the staff or halyard displaying an orange flag on the race committee vessel at the port end.

11.5 [DP] Boats whose warning signal has not been made shall avoid the starting area during the starting sequence for other races.

11.6 A boat that does not start within 10 minutes after her starting signal will be scored Did Not Start without a hearing. This changes RRS A4 and A5.

12 RECALLS

12.1 The race committee will announce on VHF radio boats identified as OCS, UFD, or BFD. A boat may not base a request for redress on the failure to hear or receive the announcements, the timeliness of announcement or the order in which boats are announced. This changes RRS 62.1(a) and RRS/US U5.

12.2 For Fall Series 1 and the River Course of Fall Series 2, recalls will be signaled in accordance with RRS 29.1 and 29.2 (this changes RRS/US U1, U2, and replaces RRS/US U4).

13 CHANGE OF THE NEXT LEG OF THE COURSE

13.1 To change the next leg of the course, the race committee will lay a new mark (or move the finishing line) and remove the original mark as soon as practicable. When in a subsequent change, a new mark is replaced, it will be replaced by an original mark.

13.2 After a start, if flag C is flown over flag Q, then the course change applies only to boats beginning their final leg to the finish. This changes RRS 33 and race signals C.

14 THE FINISH

14.1 The finishing line will be between a staff or halyard displaying a blue flag on the race committee finishing vessel and the course side of the finishing mark.

15 PENALTY SYSTEM

15.1 Penalties while racing: RRS 44.1, One-Turn and Two-Turns Penalties will apply.

15.2 Penalties after racing: RRS/US Appendix V2, Penalty Taken After the Race, will apply.

16 TIME LIMITS

16.1 For the drop marks races:

- (a) If no boat has passed the first mark within 45 minutes after the starting signal, the race will be abandoned.
- (b) The time limit for each class is 120 minutes.
- (c) Except for ORC, boats failing to finish within 20 minutes after the first boat in her class sails the course and finishes, and not subsequently retiring, penalized or given redress, will be scored Time Limit Expired (TLE) without a hearing. This changes RRS 35, A4, A5.2, and A10.

16.2 For the government marks race, there is no time limit.

17 PROTESTS, REQUESTS FOR REDRESS, SCORING INQUIRIES

- 17.1 Protest forms, scoring inquiry forms, and penalty acceptance forms can be found online at <https://www.annapolisyc.com/racing/raceoffice> . They shall be delivered to the race office by email (see SI 3.2).
- 17.2 Protests, requests for redress or reopening shall be delivered to the race office by the protest time limit.
- 17.3 When the race committee receives a scoring inquiry form, it will review its records and respond as soon as practicable.
- 17.4 The protest time limit is 60 minutes after the race committee signal vessel docks. The race committee will post the protest time limit.
- 17.5 The protest committee will post a notice to inform competitors of the schedule and location of hearings in which they are parties or named as witnesses.
- 17.6 The race committee will post a list of race committee scoring actions no later than the protest time limit.
- 17.7 Notices of protests by the race committee or protest committee will be posted to inform boats under RRS 61.1(b).
- 17.8 As soon as practicable after the protest time limit, the protest committee will post a notice to inform competitors of the schedule and location of hearings in which they are parties or named as witnesses.

18 SCORING

- 18.1 RRS Appendix A4, Low Point System, will apply.
- 18.2 One race is required to be completed to constitute a series.
- 18.3 A boat's series score will be the total of her race scores.
- 18.4 Corrected times for ORC classes will be calculated using ORC Time-on-Time ratings. The race committee will assign the appropriate course type and wind strength prior to scoring.
- 18.5 Boats to be scored TLE will be scored points equal to the number of boats finishing within the finishing window plus two points by the race committee without a hearing but no worse than the number of entries. This changes RRS A5.2 and A10.

19 SAFETY REGULATIONS

- 19.1 [DP] A boat that retires from a race, or leaves the racing area between races, shall notify the race committee or race office (see SI 3) at the first reasonable opportunity.
- 19.2 [NP] [DP] A boat shall not exercise right of way, cross in proximity to, or interfere with reasonable transit of the race area by commercial ships, tugs, or barges. Boats must take evasive action well in advance of a potentially dangerous situation. The US Coast Guard, ship captains, and bay pilots have been encouraged to report any incident they observe.
- 19.3 A boat without way may use any means of propulsion to avoid commercial traffic that is under way provided: (a) the boat does not gain an advantage; (b) use of the propulsion is the boat's only means of avoiding the commercial traffic; and (c) the boat submits a report to the race office (in writing or by e-mail to raceoffice@annapolisyc.org) by the protest filing deadline describing the incident and the boat's actions.
- 19.4 The race committee or protest committee may protest a boat for SI 19.2 based on information received from any source. A written statement from the US Coast Guard, a ship captain, or a bay pilot will be accepted as evidence without the author present. The protest time limit does not apply. This changes RRS 60.2, 60.3, 61.3, and 63.6.

20 PRIZES

- 20.1 Prizes will be given in each class for 1st place with 3 or more starters (boats starting in at least one race), 2nd place with 6 or more starters, and 3rd place with 9 or more starters.
- 20.2 The OA anticipates that the following perpetual trophies will be awarded:
 - (a) Viking Trophy: best performance in ORC overall.
 - (b) Chesapeake Trophy: first in ORC I.
 - (c) Commodore H.H.J. Benson Trophy: first in ORC II.
 - (d) Harwood S. Strange Trophy: first in ORC III.
 - (e) William G. Sullivan Trophy: first in the J/30 class.
 - (f) Charles Dell Trophy: first in the J/105 class.

- (g) America's Trophy: this event will be part of AYC's season series for overall performance in ORC.
 - (h) G. di Marzo Centennial Cup: This event will be part of the Harbor 20 Fleet 5 Championship (along with the AYC Spring Harbor regatta).
- 20.3 The winner of the J/35 class will be the 2021 J/35 Mid-Atlantic Champion.
- 20.4 Additional prizes may be awarded at the discretion of the organizing authority.

21 DISCLAIMER OF LIABILITY

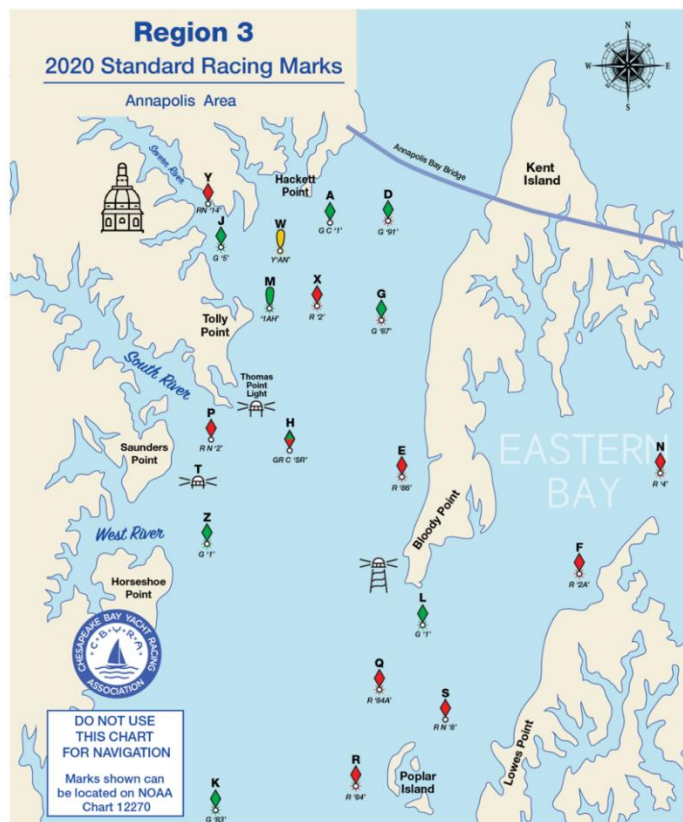
- 21.1 Competitors participate in the regatta entirely at their own risk. See RRS 3, Decision to Race.

SI ATTACHMENT 1 - DROP MARKS COURSES

In the below table, the course designation is followed by the mark rounding order for that course. All marks except 2S are to be rounded to port. If the race committee announces on VHF radio that a gate will not be used, then mark 2S will not be set. The marks are described in SI 10. The starting line is described in SI 11.4. The finishing line is described in SI 14.

<p style="text-align: center;">LA</p> <p style="text-align: center;">LA2: Start-1-1a-2s/2p-1-1a-Finish LA3: Start-1-1a-2s/2p-1-1a-2s/2p-1-1a-Finish</p>	<p style="text-align: center;">LAF</p> <p style="text-align: center;">LA2F: Start-1-1a-2s/2p-1-1a-Finish LA3F: Start-1-1a-2s/2p-1-1a-2s/2p-1-1a-Finish</p>	<p style="text-align: center;">WA</p> <p style="text-align: center;">WA2: Start-1-1a-2s/2p-Finish WA3: Start-1-1a-2s/2p-1-1a-2s/2p-Finish</p>
<p style="text-align: center;">L</p> <p style="text-align: center;">L2: Start-1-2s/2p-1-Finish L3: Start-1-2s/2p-1-2s/2p-1-Finish</p>	<p style="text-align: center;">LF</p> <p style="text-align: center;">L2F: Start-1-2s/2p-1-Finish L3F: Start-1-2s/2p-1-2s/2p-1-Finish</p>	<p style="text-align: center;">W</p> <p style="text-align: center;">W2: Start-1-2s/2p-Finish W3: Start-1-2s/2p-1-2s/2p-Finish</p>
<p style="text-align: center;">TL</p> <p style="text-align: center;">TL2: Start-1-2-3-1-Finish TL3: Start-1-2-3-1-3-1-Finish</p>	<p style="text-align: center;">TLF</p> <p style="text-align: center;">TL2F: Start-1-2-3-1-Finish TL3F: Start-1-2-3-1-3-1-Finish</p>	<p style="text-align: center;">TW</p> <p style="text-align: center;">TW2: Start-1-2-3-Finish TW3: Start-1-2-3-1-3-Finish</p>

(a)



NOTE: Former marks "B" and "C" have been DELETED, and new marks "D" and "G" have been added as replacements.

Region 3 – 2020 Standard Racing Marks - Annapolis Area

Mark	Govt. ID	Characteristics	Location	Lat 38 N	Lon 76 W
A	G C"1"	G Can	1.1 nm SSE of Hackett Point	58-12.104	24-52.249
D	G "91"	FI G 4s Buoy	1.3 nm SSW of Chesapeake Bay Bridge	58-59.103	23-16.547
E	R "86"	FI R 4s Buoy	2.0 nm N of Bloody Point	51-58.414	23-32.836
F	R "2A"	FI R 4s Bell	0.6 nm N of Wades Point	50-33.347	18-12.964
G	G "87"	G Buoy	3.3 nm S of Chesapeake Bay Bridge	55-58.127	23-32.776
H	GR C"SR"	GR Can	0.3 nm SE of Thomas Pt. Light	53-39.428	25-52.216
J	G "5"	FI G 4s Buoy	0.38 nm SW of Greenbury Pt	58-17.815	27-43.465
K	G "83"	FI G 4s GONG	2.5 nm WSW of Poplar Island	45-07.524	26-39.330
L	G "1"	FI G 4s Bell	1.0 nm S of Kent Point	49-07.418	22-07.829
M	"1AH"	FI G 4s 15ft	NNE of Tolly Point (Shoal inside)	56-09.043	26-10.042
N	R "4"	FI 4s Buoy	0.8 nm N of Tilghman Point	52-35.114	15-04.963
P	R N"2"	R Nun	1.6 nm WSW of Thomas Pt Light	53-44.311	27-52.247
Q	R "84A"	FI R 2.5s Buoy	2.16 NNW of Poplar Island	47-35.620	24-41.331
R	R "84"	FI R 4s Bell	1.3 nm W of Poplar Island	45-27.424	25-06.828
S	R N"8"	R Nun	0.95 nm NW of Lowes Point	47-07.424	20-52.831
T	Fixed	FI(2+1) R 6s 15ft	0.6 nm E of Saunders Pt Shoal Junction Light	53-01.796	28-37.321
U	RC Choice	Inflatable drop	May be set by R.C. at Starting Line		
V	RC Choice	Inflatable drop	May be set by R.C. as 1		
W	Y "AN"	FI Y 4s	NOAA Weather Buoy off of Greenbury Pt	57-49.010	26-48.370
X	R "2"	FI R 2.5s Bell	1.3 nm E of Tolly Point	56-30.000	25-29.000
Y	R N"14"	TR Nun	0.3 nm NNW of Triton Pt	59-09.072	28-40.118
Z	G "1"	FI G 4s Buoy	2.6 NM NE of Curtis Point	51-50.694	26-59.472