

SAILING INSTRUCTIONS

PHRF Northern Chesapeake Bay Championship & Northern Bay Regatta Glenmar Sailing Assoc Partnered with CBYRA & PHRF of the Chesapeake June 26-27, 2021

GLENMAR SAILING ASSOCIATION (GSA) IS THE ORGANIZING AUTHORITY (OA) FOR THIS REGATTA. THIS IS AN OFFICIAL CBYRA HIGH POINT SANCTIONED EVENT.

THE NOTATION '[DP]' IN A RULE IN THESE SAILING INSTRUCTIONS (SIS) MEANS THAT THE PENALTY FOR A BREACH OF THAT RULE MAY, AT THE DISCRETION OF THE PROTEST COMMITTEE, BE LESS THAN DISQUALIFICATION.

THE NOTATION '[NP]' IN A RULE IN THESE SAILING INSTRUCTIONS MEANS IT SHALL NOT BE GROUNDS FOR PROTEST BY A BOAT. THIS CHANGES RRS 60.1(A).

1 RULES

- 1.1 The regatta will be governed by the rules as defined in The Racing Rules of Sailing (RRS) the 2021 Green Book General Sailing Instructions, the notice of race, class rules and these Event Sailing Instructions.
- 1.2 The US Sailing Prescriptions to RRS 63.1 and 63.2 shall not apply.
- 1.3 [DP] Boats shall not fly drones while racing or in the racing area.

2 CHANGES TO SAILING INSTRUCTIONS

Any change to the sailing instructions (SIs) will be posted before 0830 on the day it will take effect, except that any change to the schedule of races will be posted by 2000 on the day before it will take effect.

3 COMMUNICATIONS WITH COMPETITORS

- 3.1 Notices to competitors will be posted on the Official Notice Board located on the race website <https://www.yachtscoring.com/emenu.cfm?eID=14420>
It is the responsibility of each competitor to check the Official Notice Board for any amendments or notices.
- 3.2 On the water, the race committee intends to provide information on VHF radio. The division channels are as follows:

PHRF Classes channel 72

CRCA & CMA Classes channel 73.
- 3.3 [DP] [NP] Except in an emergency, a boat that is racing shall not make voice or data transmissions and shall not receive voice or data communication that is not available to all boats.

4 CODE OF CONDUCT

- 4.1 Competitors and support persons shall comply with reasonable requests from race officials.
- 4.2 The Skipper/Owner of each boat participating in the regatta shall be responsible for the behavior of each member of the crew of his/her boat both on the water and while ashore.

5 SIGNALS MADE ASHORE

No official signals will be displayed ashore. Notifications to competitors will be posted on the Official Notice Board.

6 SCHEDULE OF RACES

- 6.1 Five races are scheduled for PHRF. The intention is to have three races on Saturday and two races on Sunday.
- 6.2 The scheduled time of rendezvous is 1030 with the warning signal for the first start of the first race each day at approximately 1045.
- 6.3 On Sunday, June 27, no warning signal will be made after 1430.

7 DIVISIONS, CLASS FLAGS AND INITIAL STARTING ORDER

7.1 CLASS FLAGS AND FLEETS

- 7.1.1 The PHRF Fleet splits will be as follows, and boats should display their class flag per the 2021 CBYRA Greenbook. Initial starting order:

PHRF-A - All spinnaker boats with a current, valid PHRF Chesapeake rating up to and including 109.

PHRF-B - All spinnaker boats with a current, valid PHRF Chesapeake rating between and including 110 and 148.

PHRF-C - All spinnaker boats with a current, valid PHRF Chesapeake rating 149 and above.

PHRF-N - All non-spinnaker boats with a current, valid PHRF Chesapeake rating (all ratings).

- 7.3 Once a PHRF class has finished, anticipate the class will go into starting sequence shortly after.
- 7.4 The CRCA & CMA Fleet splits will be as follows, and boats should display their class flag Initial starting order (note: classes may be combined depending on the number of participants):

CRCA ORR-Ez True Cruiser

CRCA ORR-Ez Performance Cruiser

CRCA ORR-Ez Racer Cruiser

CRCA ORR-EZ Non-Spinnaker

CMA A&B

- 7.3 For all non-spin classes, only one (1) headsail may be used at a time while racing, except for cutter rigs flying headsails in the normal configuration.

8 RACING AREA

- 8.1 The racing area will be the Chesapeake Bay in the vicinity of Middle River. The general racing area for PHRF will be:
Vicinity of G "1MR" Region 1 Mark Q.
- 8.2 The general racing area for CRCA & CMA will be:
Vicinity of R "2G" Region 1 Mark N.
- 8.3 Approximately 30 minutes prior to the first scheduled warning signal, the race committee will announce location of the anchored race committee signal vessel on VHF radio.

9 COURSES

- 9.1 For PHRF classes, it is anticipated to conduct a total of five (5) races, with three (3) races on Saturday and two (2) races on Sunday. These will be Windward/Leeward (W/L) courses of approximately 4NM. Each race will be a CBYRA sanctioned event. The courses are as shown in the Course Diagrams and Descriptions.
- 9.2 For CRCA & CMA classes will have one distance race on Saturday using government marks. The course will be using 2021 Standard Racing Marks for Region 1 and will be posted on the signal boat prior to the first warning. On Sunday, CMA will have two (2) windward/leeward races using their own starting line and race course independent of the PHRF classes. The length of the entire race to be four (4) NM. Each race would then qualify as a CBYRA High Point event.
- 9.3 Prior to the warning signal, the race committee signal vessel will announce on VHF radio the course to be sailed, the approximate distance between the leeward and windward marks, and the approximate compass bearing of the first leg of the course.

10 MARKS

- 10.1 Marks will be orange inflatable tetrahedrons (both windward & leeward marks). There will be a pink offset ball at the weather mark for PHRF classes only. In the event of a course change the new mark will be a yellow tetrahedron. Mark changes will be in accordance with RRS 33.
- 10.2 Prior to the warning signal, the race committee signal vessel may announce on VHF radio that the first mark will be a change mark.

11 THE START

- 11.1 For PHRF races only, starts will use RRS/US Appendix U, Audible-Signal Racing System, with all hails being made by VHF radio. The intention is to have a one to two minute gap between starting sequences for each class. This will allow boats to clear the line when starting and be prepared for their class starting sequence.
- 11.2 CRCA & CMA classes will use RRS 26 for both Saturday and Sunday. Prior to the warning signal, the race committee will announce the next class to start on VHF radio.
- 11.3 The starting line will be between the staff or halyard displaying an orange flag on the race committee signal vessel at the starboard end, and the course side of the starting mark.
- 11.4 [DP] Boats whose warning signal has not been made shall avoid the starting area during the starting sequence for other races.
- 11.5 A boat that does not start within 10 minutes after her starting signal will be scored Did Not Start (DNS) without a hearing. This changes RRS A4 and A5.

12 RECALLS

- 12.1 For PHRF classes, recalls will be signaled in accordance with RRS Appendix U. For CRCA & CMA, recalls will be signaled in accordance with 29.1 and 29.2.
- 12.2 The race committee will announce on VHF radio boats identified as OCS, UFD, or BFD. A boat may not base a request for redress on the failure to hear or receive the announcements, the timeliness of announcement or the order in which boats are announced. This changes RRS 62.1(a) and RRS/US U5.

13 CHANGE OF POSITION OF THE NEXT MARK

- 13.1 The race committee may, without signal, move a mark to change the direction up to 10 degrees or the length up to 10% of the previous length, provided that no boat is sailing to the mark.
- 13.2 The race committee may, when signaled in accordance with RRS 33, will lay a new mark as described in SI paragraph 10.1 (or move the finishing line) and remove the original mark as soon as practicable. When in a subsequent change a new mark is replaced, it will be replaced by an original mark.
- 13.3 When flag Q is displayed with flag C, the change will apply only to boats beginning their final leg to the finish. This changes RRS 33 and Race Signals.

14 THE FINISH

The finishing line will be between the staff displaying a blue flag on the race committee finishing vessel and the course side of the nearby finishing mark.

15 TIME LIMIT

- 15.1 If no boat sails the course and finishes within 2 hours the race will be abandoned.
- 15.2 Boats failing to finish 30 minutes after the first boat sails the course and finishes will be scored TLE (Time Limit Expired, see Scoring) and should proceed to the starting area if another race is scheduled. The race committee boat at the finishing line will lower the blue shape or flag with a long sound signal when the 30-minute period has expired for all classes. This changes RRS 35, A4 and A5.

16 HEARING REQUESTS

- 16.1 Verbally notify Race Committee boat of protest prior to leaving the finish area. Mail protest forms, postmarked by Tuesday June 29, 2021 with copies sent to protestee and David Kozera, 1408 Bare Hills Road, Baltimore, MD. 21209. Parties involved in protests will be notified of date, place, and time of hearing.

17 SCORING

- 17.1 For PHRF, two completed races shall constitute a series.
- 17.2 A boat's series score will be the total of her race scores without discard.
- 17.3 Boats to be scored TLE and not thereafter retiring, being penalized, or given redress will be scored points equal to the number of boats finishing within the time limit plus two points by the race committee without a hearing. This changes RRS A4.1, A4.2 and A5.

18 SAFETY REGULATIONS

18.1 [DP] A boat that retires from a race shall notify the race committee as soon as practicable.

18.2 RRS 40 (Personal Buoyancy) is replaced by: "It shall be the individual responsibility of each competitor to wear adequate personal buoyancy when conditions warrant."

18.3 [NP] A boat shall not exercise right of way, cross in proximity to, or interfere with reasonable transit of the race area by commercial ships, tugs, or barges. Boats must take evasive action well in advance of a potentially dangerous situation. The US Coast Guard, ship captains, and bay pilots have been encouraged to report any incident they observe.

18.4 The race committee or protest committee may protest a boat for breaking SI 18.3 based on information received from any source. The protest time limit does not apply. This changes RRS 60.2, 60.3, 61.3, and 63.6.

19 PRIZES

19.1 Trophies will be awarded by class.

19.2 Trophies will be presented for each race (1st/3, 2nd/5 & 3rd/7+ finishers).

19.3 For PHRF classes, the PHRF Northern Chesapeake Bay Champion perpetual trophies will be awarded for each class winner.

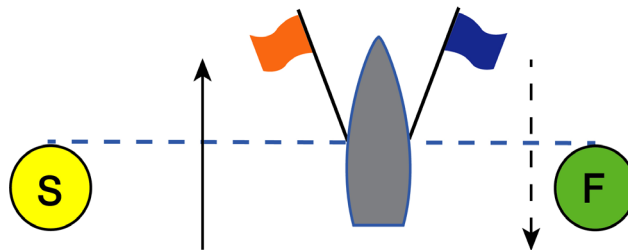
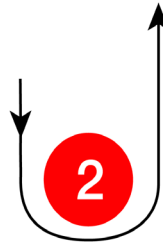
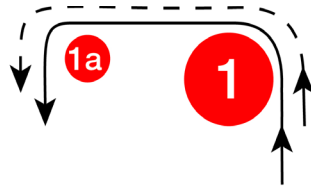
20 RISK DISCLAIMER OF LIABILITY

20.1 Competitors participate in the regatta entirely at their own risk. See RRS Rule 4, Acceptance of the Rules. The OA will not accept any liability for material damage or personal injury or death sustained in conjunction with or prior to, during, or after the regatta.

21 INSURANCE

21.1 Each participating boat shall be insured with valid third party liability insurance with a minimum cover of \$300,000 per incident or equivalent.

Course for PHRF Classes



START - 1 - 1a - 2 - 1 - 1a - FINISH

(approximately 4 nautical miles)