



2021 GTYC ANNUAL REGATTA

THE HOUND DOG REGATTA

ORGANIZED AND HOSTED BY THE GRAND TRAVERSE YACHT CLUB
WEST GRAND TRAVERSE BAY – TRAVERSE CITY MI

SATURDAY, AUGUST 14, 2021
GRAND TOURING DIVISION
SAILING INSTRUCTIONS

"Tour of the Bay" Courses

1 – Rules –

1.1 - The regatta will be governed by the rules as defined in The Racing Rules of Sailing (RRS), PHRF and one design class rules except as modified by these Sailing Instructions.

1.2 - The following rules are changed -

- a) Race Signal AP is changed in SI 4.2.
- b) RRS App A is changed in SI 10.2 and in SI 16.

2 – Notices to Competitors – will be posted on the Official Notice Board located in the GTYC foyer.

3 – Changes To Sailing Instructions – will be posted ninety (60) minutes prior to the first warning signal on the day it will take effect

4 – Signals Made Ashore –

4.1 - Signals made ashore will be displayed from the GTYC flagstaff and broadcast on VHF channel 69.

4.2 - When flag AP is displayed ashore, '1 minute' is replaced with 'not less than thirty (30) minutes' in Race Signal AP. This changes Race Signal AP

5 – Schedule of Races –

Saturday, August 14

- 0900 hrs – Competitor Meeting, GTYC (optional)
- 1015 hrs – Signal Boat in position for Check-In
- 1030 hrs – Race #1 Grand Touring 1st Warning Signal
- 1230 hrs – Earliest First Warning Signal for Race #2 – Race #3 to follow immediately if possible
- 1500 hrs – No Races started after 1500 hrs
- 1830 hrs – Awards

6 – Class Flag – Grand Touring: Green

7 — Check-In — Prior to the the first race of the day sailed by a yacht, all Grand Touring Division competitors must check in with the Race Committee on the starboard side of the Signal Boat. The Signal Boat will be in position for check-in beginning at 1015 hrs. Yachts are only required to check-in once for the day.

8 — Racing Area — will be West Grand Traverse Bay. (see Attachments A)

9 — The Courses — The Grand Touring Class courses will be a combination of designated marks, displayed RC on the signal boat with the direction of mark rounding indicated. The course will be broadcast on VHF 69 as a courtesy.

10 — Grand Touring Marks —

10.1 - Primary marks will be the GTYC Club Marks (R, Y, & B), plus the temporary “GT” mark which will be the first mark of the course, plus temporary marks at “HD”, “L”, & “P”, & government mark R8, with finishes at “F1” or “F2”

10.2 — **Race Marks** (for approximate locations see Attachment A)

“X” — Starting Line pin & non-fixed mark (orange inflatable cylinder)

“GT” — First mark of the course (Orange/Pink inflatable can)

“F1” — Finish (small orange inflatable ball)

“F2” — Hound Dog (blue inflatable can) used as finish with small yellow mark as other end of line.

“B” — Bryant Park club mark (white/orange pin)

“S” — Sandpit club mark (white/orange pin)

“Y” — Yacht Club club mark (white/orange pin)

“R” — Red 8 government mark

“H” — Hound Dog (blue inflatable can)

“P” — Pathfinder (orange inflatable tetrahedron) approx .75 nm north of “R8” on west half of bay

“L” — Lookout Point (orange inflatable tetrahedron) mark approx. .75 nm north of “SP” on east shore of bay

11 — The Start

11.1 — The starting line will be between a staff displaying an orange/white checkered flag on the RC signal boat at the starboard end and the “X” orange cylinder at the port end.

11.2 — A boat starting later than four (4) minutes after her starting signal will be scored Did Not Start (DNS). This changes RRS A4.1

11.3 — Boats whose warning signal has not been made shall avoid the starting area while others are in sequence.

12 — Recalls — Individual Recalls will be signaled in accordance with RRS 29.2. The RC intends to make an attempt to hail OCS competitors on VHF channel 69. The following are not grounds for redress: failure of the RC to hail any or all boats; failure of the RC to accurately hail one or more boats; failure of a boat to hear its hail; timeliness of the hail; or the order of boats within the ha

13 – The Finish - The finish line may be:

13.1 – Signalled as “F1” between a staff displaying a blue shape on a RC Boat and the designated finish mark (small orange inflatable ball) to the starboard of the RC Boat.

13.2— Signalled as “F2” between the Hound Dog Mark (“H”) — a blue inflatable can — and a small yellow inflatable ball. Course instructions will designate on which side the finishing yacht will leave the mark.

13.3 - In the absence of an RC boat at the finish, boats shall take their own times when their bow crosses the finish line. Finish time can be texted to the RC at 231.883.5741

13.4 - If the course is shortened to finish at a mark of the course and an RC boat is not present, boats shall take their own times when their bow crosses a line extending perpendicular from the course mark to the rhumbline from the previous mark. Yachts must be within 50 yards of the mark when the time is taken. Finish time can be texted to the RC at 231.883.5741

14 – Time Limits

14.1 - For Grand Touring Races, the time limit will be 150 minutes.

14.2 - For Grand Touring Classes any boat failing to finish within thirty (30) minutes after the first boat in their section sails the course and finishes will be scored Time Limit Expired (TLE).

15 – Protests And Requests For Redress –

15.1 – Protests shall be filed within the protest time limit at GTYC where forms will be available.

15.2 – The protest time limit will be 60 minutes after the RC (Blue Flag) Signal Boat docks. This time will be posted on the Official Notice Board and will be announced on VHF Channel 69.

15.3 – Notices will be posted within thirty (30) minutes of the protest time limit to inform competitors of hearings in which they are parties or named as witnesses. Location of hearings TBD.

16 – Scoring –

16.1 – All races for the PHRF classes will be scored using PHRF Time On Time Handicaps. Entrants that do not have a valid LMPHRF certificate will be assigned a rating.

16.2 - Up to three races are scheduled and one race shall be completed to constitute a series.

16.3 - A boat's series score will be the total of her race scores. This changes App A2.

16.4 - A boat that does not finish a race (DNF), time limit expired (TLE), or retires after finishing (RET) will be scored one more point than the last boat to finish in that race. This changes RRS App A4.2

17 – Prizes – will be awarded to first, second, & third place overall for each fleet. Award hats will be provided with a maximum distribution of five hats. If award winners would like additional hats, they may be ordered at their own expense

18 - SAFETY REGULATIONS — Signal Boat cell number is 616-450-6746

18.1 - A boat that retires from a race or leaves the racing area is requested to notify the RC on VHF Ch 69, by cell phone, or by hailing any RC boat. A boat that subsequently returns to the racing area is asked to check in with the RC Signal Boat as in 17.1 or via VHF Ch 69. There will be no penalty for not checking out or back in.

18.2 — The primary communication for all medical emergencies is 911

18.3 - Weather will be monitored via the following applications: “My Radar”, “Storm - Weather Radar”, & “My Lightning Tracker”. Decisions regarding racing by the OA and PRO will be based on these applications.

19 — *The primary communication for all medical emergencies is 911*

20 - Radio Communication — A boat shall neither make radio transmissions while racing nor receive radio communications not available to all boats. **VHF Channel 69** will be monitored by the RC and they will only respond to competitors who identify themselves.

21 - CODE OF CONDUCT

21.1 Competitors shall comply with any reasonable request from any official, and shall not behave so as to bring the event or the sport into disrepute.

21.2 Competitors are expected to comply fully with rule 2 at all times. Abuse or intimidation of other competitors, race officials, or officials of the host club will not be tolerated. All such incidents shall be reported to the Principal Race Officer. Repeated incidents by individuals or teams shall be reported to the protest committee and may be considered gross misconduct (a gross breach of sportsmanship).

22.3 When a competitor and/or crew is found to have committed an act of Gross Misconduct, the penalty shall be a scoring penalty equal to 40% of the entries in the race for each incident. Additionally, the competitor and/or boat that was responsible for the crew may not discard this race in the series.

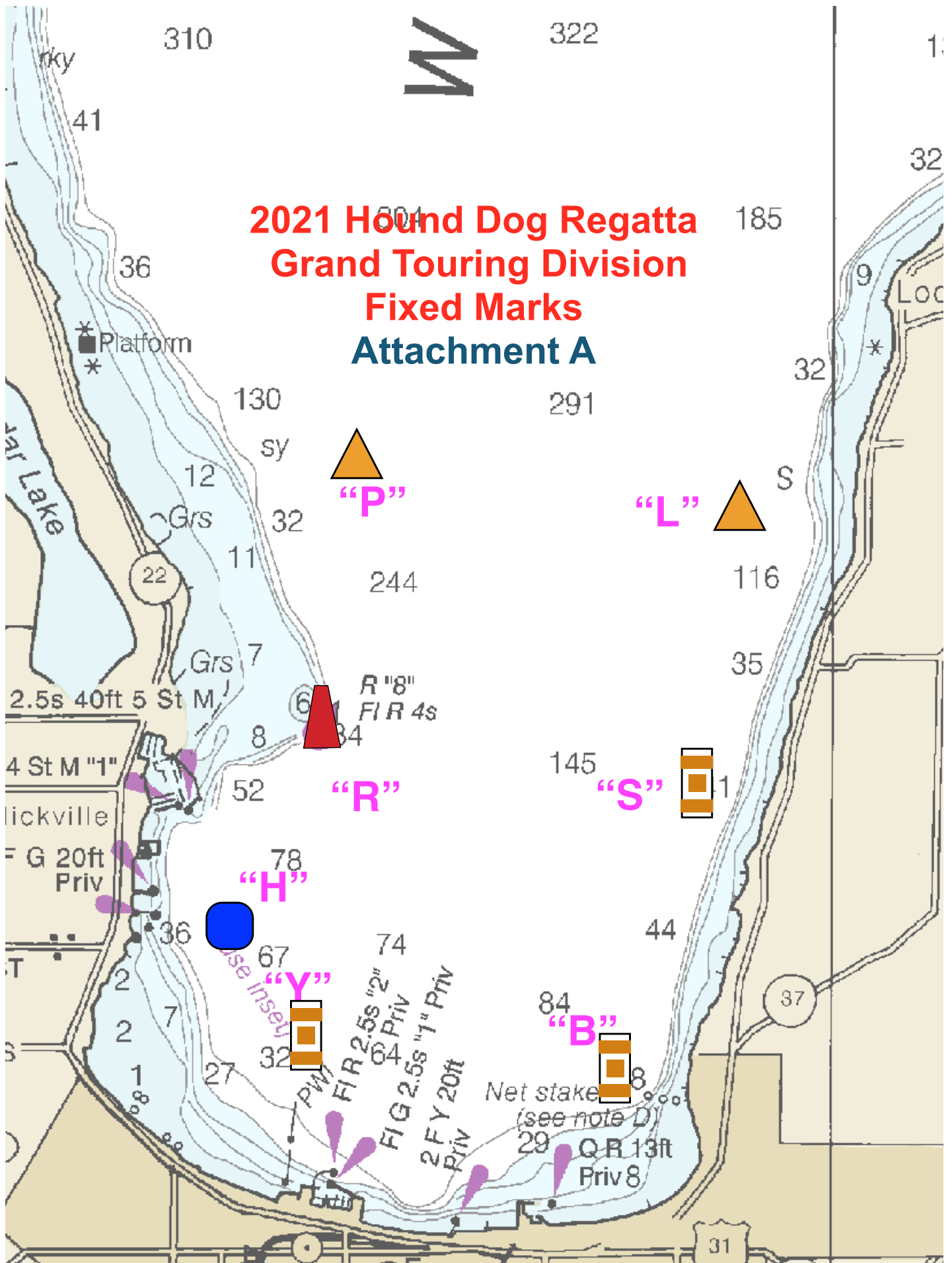
22.4 Competitors shall not obstruct Race Management vessels as they conduct operations including setting marks, anchoring, and judging the start/finish line. Repeated incidents by individuals or teams shall be reported to the protest committee.

22 — Disclaimer Of Liability — Competitors participate in the regatta entirely at their own risk. See RRS 4, Decision to Race. The organizing authority will not accept any liability for material damage or personal injury or death sustained in conjunction with or prior to, during, or after the regatta.

23 - COVID WAIVER - The novel coronavirus, COVID-19, has been declared a worldwide pandemic by the World Health Organization. COVID-19 is extremely contagious and is believed to spread mainly from person-to-person contact. It is believed that an individual can be infected with COVID-19 without their knowledge and be asymptomatic. The Grand Traverse Yacht Club (GTYC) has put in place preventative measures to reduce the spread of COVID-19. However, the GTYC cannot guarantee that I or anyone else will not become infected with COVID-19, and participation in an GTYC event could increase the risk of contracting COVID-19. By participating in an GTYC event, I ACKNOWLEDGE the contagious nature of COVID-19 and VOLUNTARILY ASSUME THE RISK that I may be exposed to or infected by COVID-19 by participating in an GTYC event, and that such exposure or infection may result in personal

injury, illness, permanent disability, and death. I understand that the risk of becoming exposed to or infected by COVID-19 at an GTYC may result from the actions, omissions, or negligence of myself or others, including, but not limited to, GTYC employees, volunteers, and other participants. I UNDERSTAND AND VOLUNTARILY ACCEPT AND ASSUME ALL the foregoing risks related to COVID-19 and accept sole responsibility for any injury or illness that may occur. Further, I UNDERSTAND AND AGREE that this release includes any Claims based on the actions, or omissions, of the GTYC, its employees, agents, and volunteers, whether a COVID-19 infection occurs before, during, or after participation in any GTYC event.

**2021 Hound Dog Regatta
Grand Touring Division
Fixed Marks
Attachment A**

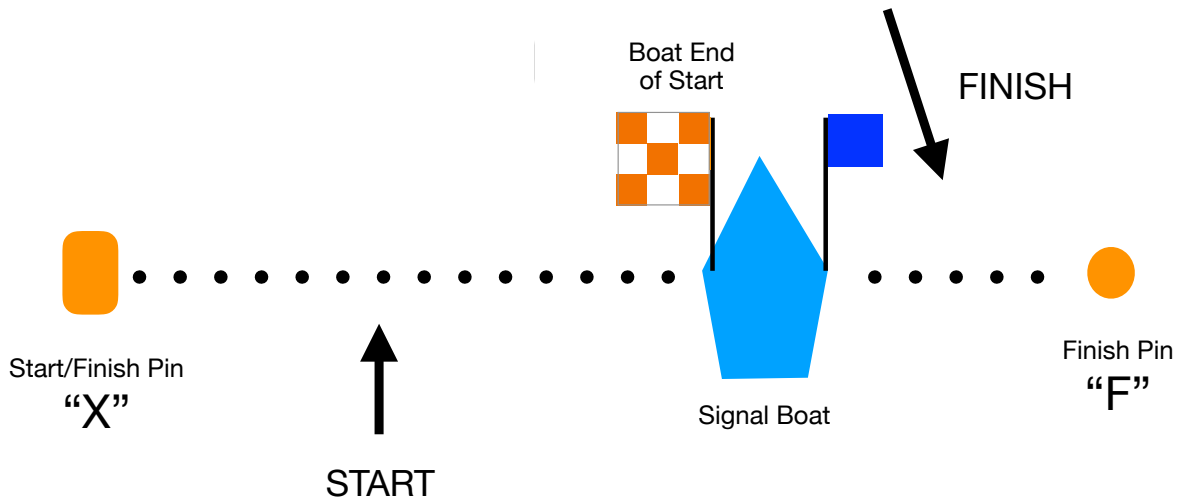


2021 Hound Dog Regatta Grand Touring Division Attachment B

GT

GT Windward Mark
“W”
*Instructions will new given which
direction to round the mark*

Signal Boat Finish
— Signaled as “F1”
*To the starboard side of
the Signal Boat
Yachts will finish between
the Signal Boat and the
accompanying smaller
orange inflatable mark*



Use of Hound Dog Mark for Club Finish — Signaled as “F2”
*The Race Committee may signal a race finish at the Hound Dog Mark
 (“H”, blue inflatable can)*

*Yachts will finish between the “H” mark and the accompanying smaller yellow inflatable
 mark, keeping the “H” mark to the side signaled by the RC*

