



## **Sailing Instructions – Big Tom City Island Cup June 12 & 13 2021**

### **1.0 EVENT**

- 1.1 City Island Cup sailed on or about the waters of Eastchester Bay
- 1.2 The organizing authority is the Harlem Yacht Club

### **2.0 RULES**

- 2.1 The regatta will be governed by the Racing Rules of Sailing 2021-24 (RRS), the regulations of the Yacht Racing Association of Long Island Sound (YRALIS), the Notice of Race (NOR) and these Sailing Instructions.
- 2.2 Boats shall keep clear of commercial shipping as required by the IRPCAS or other government right-of-way rules. The penalty for breaking this rule may be disqualification.
- 2.3 In the event of a conflict, these Sailing Instructions shall prevail.

### **3.0 NOTICES TO COMPETITORS**

- 3.1 Changes shall be posted online at [yachtscoring.com](http://yachtscoring.com) by 1900 the evening before the first race.
- 3.2 Race Committee will communicate with the fleet via VHF Channel 71

### **4.0 COMMUNICATION**

- 4.1 The Race Committee will make general announcements via VHF Channel 71 after 1100 and before the first warning signal on each race day.
- 4.2 Courses, Starting Warnings and Recalls will be announced on VHF Channel 71.

### **5.0 SCHEDULE OF RACES**

- 5.1 There are a maximum of 6 races scheduled for PHRF Spinnaker, PHRF Non-Spinnaker and One Design Divisions.
- 5.2 One race shall constitute a series.
- 5.3 If 6 races are run there will be a single throw out.
- 5.4 The first Warning Signal shall be made no earlier than 1200 hours and no later than 1600 hours each day.
- 5.5 Prior to the first start each day, each boat shall check in by passing the Race Committee and announcing their sail number.
- 5.6 The Warning signal for the subsequent races shall be made as soon as practicable and announced on VHF 71.

### **6.0 RACING AREA**

- 6.1 The Racing Area shall be the waters in and around Eastchester Bay, as shown on the attached Course Chart.

### **7.0 MARKS AND COURSES**

- 7.1 The marks of the racing area shall be as shown on the attached Course Chart.
- 7.2 Courses shall be announced on VHF71 and shown on the RC boat
- 7.3 Course shall be a series of Marks listed in order of rounding.

7.4 All Marks shall be left to port, except the finish mark when finishing downwind.

7.4 After the start, boats shall not sail through the start/finish line unless finishing.

### **8.0 THE START**

8.1 Races will be started in accordance with RSS 26.

8.2 The starting line shall be between an orange flag on the Race Committee boat and the Starting mark.

8.3 Classes will be announced on VHF71.

8.4 Boats whose Warning signal has not been made shall keep clear of the starting area.

### **9.0 THE FINISH**

9.1 The finish line shall be between a blue flag on the Race Committee boat and the Finish mark.

9.3 Unless a course is shortened, the finish mark will be the same as the starting mark.

### **10.0 TIME LIMITS**

10.1 The first boat from each start must finish within 2 hours, all succeeding boats must finish within 45 minutes of the first boat's finish time or be scored Did Not Finish (DNF).

### **11.0 PROTESTS**

11.1 A competitor intending to file a protest shall hail the Race Committee on VHF channel 71 promptly after finishing the race, announcing the name of the yacht protesting and the name of the yacht being protested.

11.2 Protests shall be emailed to the Race Committee within 1 hour of the protesting boat's last finish time for the last race on that day. Protest RC email is [bigtom@hyc.org](mailto:bigtom@hyc.org).

11.3 Protests shall be heard via a Zoom (virtual) protest hearing arranged by the race committee.

### **12.0 SCORING**

12.1 Scoring shall be as per Appendix A Low Point Scoring.

12.2 PHRF Handicaps will be adjusted using Time-on-Time based on a time correction factor (TCF) derived from a yacht's PHRF certificate rating, using the formula  $TCF = 600/(480+PHRF)$ .

### **13.0 SAFETY**

13.1 A boat that retires from a race shall notify the Race Committee as soon as possible.

### **14.0 PRIZES**

14.1 Prizes for first and second place will be awarded to all classes.

14.2 Prizes for third place will be awarded to classes with five or more entries.

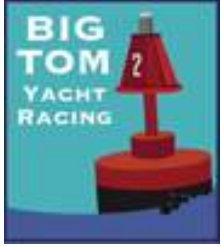
14.3 a. The City Island Cup shall be awarded to the spinnaker class boat with the best overall performance.

b. The Harlem Cup shall be awarded to the non-spinnaker class boat with the best overall performance.

14.4 Awards will be distributed at a location and time to be announced.

### **15.0 QUESTIONS**

15.1 Question regarding these SI can be directed to Harlem Yacht Club Big Tom Representatives Matt Stainback and Peter Trunfio at [bigtom@hyc.org](mailto:bigtom@hyc.org).



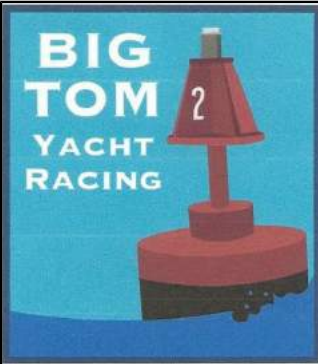
# Social and COVID 19 Protocol

## **SOCIAL INFORMATION**

Competitors and crew are invited to after race festivities at the club which will on Saturday include entertainment from the Harlem House Band. However, there may be restrictions imposed by COVID 19 that may prevent a social gathering. Should these restrictions be in effect then the Race committee shall host a fleet round up within the Harlem mooring field ensuring acceptable social distancing protocols.

Guest moorings are available at no charge for all yachts registered for the event and can be arranged by contacting [moorings@hyc.org](mailto:moorings@hyc.org). The launch can be hailed on VHF Channel 72.

Competing yachts are also invited to participate in the Friday Night Twilight regatta and party. Guest Moorings are available on a first come basis. Details can be found at [hyc.org/twilight](http://hyc.org/twilight).

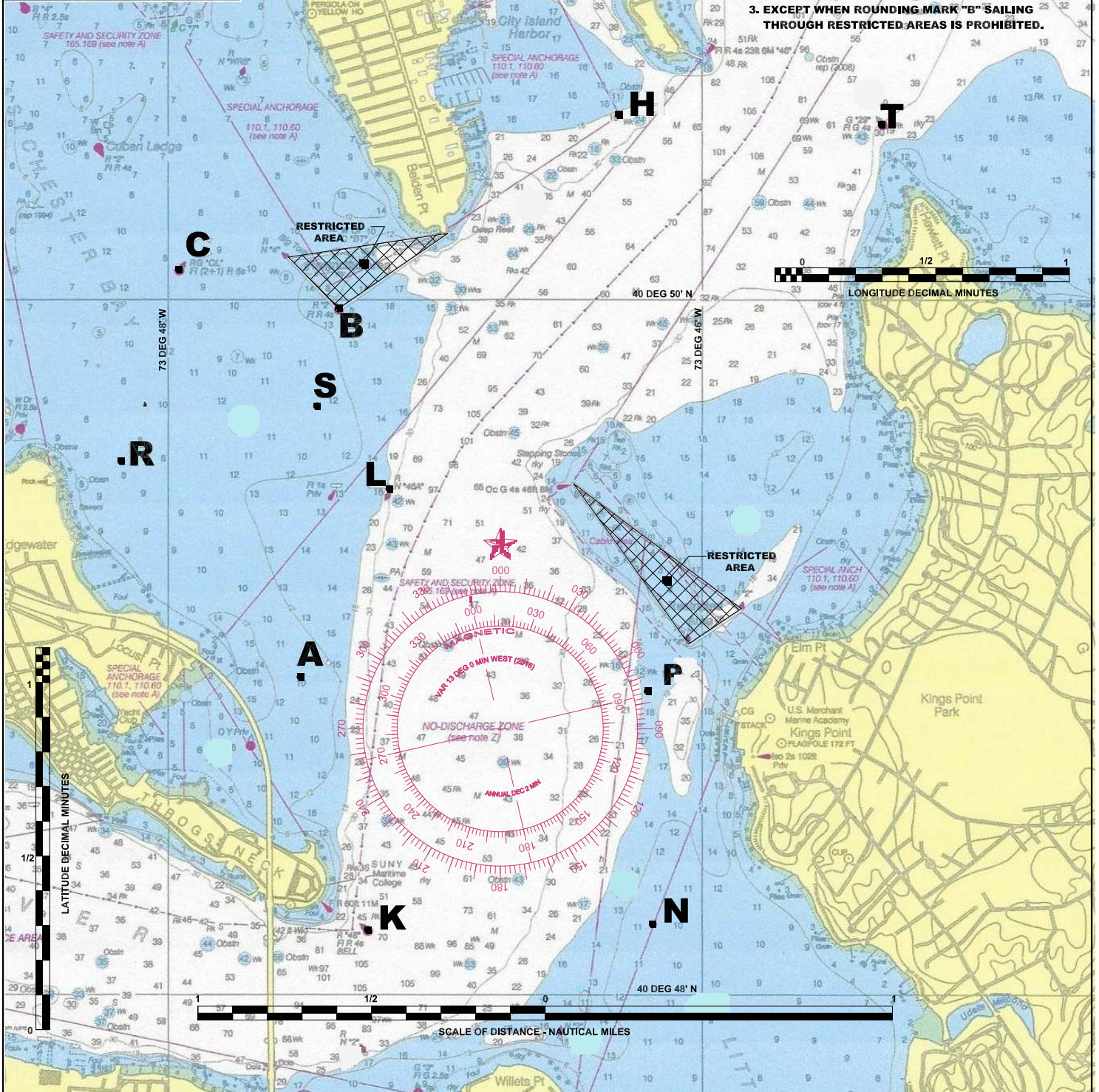


# BIG TOM YACHT RACING COURSE MARKS 2021

07 MAY 2021 HART I

## NOTES:

1. SAILING THROUGH THE START-FINISH LINE IS PROHIBITED EXCEPT WHEN STARTING, FINISHING OR ROUNDING EITHER END OF A LEeward GATE.
2. EXCEPT WHEN ROUNDING THE START-FINISH LINE PIN AS A LEeward GATE, ALL MARKS TO BE ROUNDED TO PORT.
3. EXCEPT WHEN ROUNDING MARK "B" SAILING THROUGH RESTRICTED AREAS IS PROHIBITED.



# Big Tom Yacht Racing Mark Locations 2021

7-May-21

**Note:** Mark Locations are shown in two formats: Degrees, Minutes, Seconds and Degrees, Decimal Minutes.  
Use the correct format as appropriate to your GPS unit.

## Mark Locations Shown in Degrees, Minutes, Seconds Format

MARK	Type	Description	Latitude (North)	Longitude (West)
S	BTYR	New Fixed BTYR Start Mark	40°-49' 41.7"	073°-47' 26.2"
A	BTYR	Private BTYR Mark East of Throgs Neck Bridge Causeway (Unlit)	40°-48' 54.5"	073°-47' 30.0"
B	Gov't	Big Tom Red Buoy "2" (Fl Red 4 sec)	40°-49' 58.3"	073°-47' 21.6"
C	Gov't	Cuban Ledge Mid Channel Marker Red/Green "CL" (Fl Red 2+1)	40°-50' 05.0"	073°-47' 57.5"
G	Gov't	Gangway Rock Green Gong "27" (Unlit)	40°-51' 29.8"	073°-44' 48.5"
H	BTYR	Private BTYR Mark SSW Off Hart Island (Unlit)	40°-50' 32.1"	073°-46' 18.6"
K	Gov't	Fort Schuyler Red Bell "48" (Fl Red 4 sec)	40°-48' 11.0"	073°-47' 15.0"
L	Gov't	Main Channel Mark South of Big Tom - Red Nun "46A" (Unlit)	40°-49' 26.6"	073°-47' 09.9"
N	BTYR	Private BTYR Mark in Little Neck Bay (Unlit)	40°-48' 11.0"	073°-46' 10.3"
P	BTYR	Private BTYR Mark off Kings Point (Unlit)	40°-48' 53.1"	073°-46' 12.7"
R	BTYR	Private BTYR Mark off Mouth of Weir Creek (Unlit)	40°-49' 31.7"	073°-48' 09.7"
T	Gov't	Hewlett Point Green "29" (Fl Green 4 sec)	40°-50' 30.2"	073°-45' 20.0"

## Mark Locations Shown in Degrees, Decimal Minutes Format

MARK	Type	Description	Latitude (North)	Longitude (West)
S	BTYR	New Fixed BTYR Start Mark	40°-49.695'	073°-47.437'
A	BTYR	Private BTYR Mark East of Throgs Neck Bridge Causeway (Unlit)	40°-48.908'	073°-47.500'
B	Gov't	Big Tom Red Buoy "2" (Fl Red 4 sec)	40°-49.972'	073°-47.360'
C	Gov't	Cuban Ledge Mid Channel Marker Red/Green "CL" (Fl Red 2+1)	40°-50.083'	073°-47.958'
G	Gov't	Gangway Rock Green Gong "27" (Unlit)	40°-51.497'	073°-44.808'
H	BTYR	Private BTYR Mark SSW Off Hart Island (Unlit)	40°-50.535'	073°-46.310'
K	Gov't	Fort Schuyler Red Bell "48" (Fl Red 4 sec)	40°-48.183'	073°-47.250'
L	Gov't	Main Channel Mark South of Big Tom - Red Nun "46A" (Unlit)	40°-49.443'	073°-47.165'
N	BTYR	Private BTYR Mark in Little Neck Bay (Unlit)	40°-48.183'	073°-46.172'
P	BTYR	Private BTYR Mark off Kings Point (Unlit)	40°-48.885'	073°-46.212'
R	BTYR	Private BTYR Mark off Mouth of Weir Creek (Unlit)	40°-49.528'	073°-48.162'
T	Gov't	Hewlett Point Green "29" (Fl Green 4 sec)	40°-50.503'	073°-45.333'


# Big Tom Yacht Racing

## Table of Approximate Distance and Magnetic Bearing Between Marks

7-May-21

		From											
To	From	S	A	B	C	G	H	K	L	N	P	R	T
	S		0.79 nm 016°	0.28 nm 204°	0.55 nm 147°	2.70 nm 240°	1.20 nm 236°	1.52 nm 007°	0.33 nm 333°	1.79 nm 340°	1.23 nm 323°	0.58 nm 085°	1.79 nm 256°
	A	0.79 nm 196°		1.07 nm 198°	1.23 nm 176°	3.30 nm 231°	1.86 nm 221°	0.75 nm 358°	0.59 nm 218°	1.24 nm 318°	0.98 nm 284°	0.80 nm 153°	2.29 nm 238°
	B	0.28 nm 024°	1.07 nm 018°		0.47 nm 116°	2.47 nm 244°	0.98 nm 247°	1.79 nm 010°	0.54 nm 356°	2.00 nm 346°	1.40 nm 334°	0.75 nm 066°	1.63 nm 263°
	C	0.55 nm 327°	1.23 nm 356°	0.47 nm 296°		NOT POSS	NOT POSS	1.98 nm 357°	0.88 nm 329°	2.32 nm 337°	1.79 nm 325°	0.57 nm 029°	NOT POSS
	G	2.70 nm 060°	3.30 nm 051°	2.47 nm 064°	NOT POSS		1.49 nm 062°	3.80 nm 042°	2.72 nm 054°	NOT POSS	NOT POSS	3.22 nm 065°	1.06 nm 034°
	H	1.20 nm 056°	1.86 nm 041°	0.98 nm 067°	NOT POSS	1.49 nm 242°		2.46 nm 030°	1.26 nm 044°	NOT POSS	NOT POSS	1.73 nm 067°	0.75 nm 285°
	K	1.52 nm 187°	0.75 nm 178°	1.79 nm 190°	1.98 nm 177°	3.80 nm 222°	2.46 nm 210°		1.27 nm 195°	0.81 nm 282°	1.05 nm 241°	1.52 nm 165°	NOT POSS
	L	0.33 nm 153°	0.59 nm 038°	0.54 nm 176°	0.88 nm 149°	2.72 nm 234°	1.26 nm 224°	1.27 nm 015°		1.46 nm 342°	0.92 nm 323°	0.77 nm 109°	1.75 nm 246°
	N	1.79 nm 160°	1.24 nm 138°	2.00 nm 166°	2.32 nm 157°	NOT POSS	NOT POSS	0.81 nm 102°	1.46 nm 162°		0.69 nm 191°	2.02 nm 144°	NOT POSS
	P	1.23 nm 143°	0.98 nm 104°	1.40 nm 154°	1.79 nm 145°	NOT POSS	NOT POSS	1.05 nm 061°	0.92 nm 143°	0.69 nm 011°		1.63 nm 126°	NOT POSS
	R	0.58 nm 265°	0.80 nm 333°	0.75 nm 246°	0.57 nm 209°	3.22 nm 245°	1.73 nm 247°	1.52 nm 345°	0.77 nm 289°	2.02 nm 324°	1.63 nm 306°		2.37 nm 258°
	T	1.79 nm 076°	2.29 nm 058°	1.63 nm 083°	NOT POSS	1.06 nm 214°	0.75 nm 105°	NOT POSS	1.75 nm 066°	NOT POSS	NOT POSS	2.37 nm 078°	

### NOTES:

- 1 The Course Boxes Shaded in Yellow  Indicate That The Rhumb Line Course Between the Marks **CANNOT BE SAILED DIRECTLY** As It Crosses Land , Rocks, Shallows, Restricted Areas or Other Obstructions. Use these Courses With **CAUTION !!!**.
- 2 The Above Information Is Provided for Convenient Guidance Only. It is **NOT TO BE USED FOR NAVIGATION!** The Skipper of Each Vessel Remains Solely Responsible for the Safe Navigation of Their Vessel.