



## **2021 Leukemia Cup - Commodore's Cup - VXOne Great Lakes Championship**

Leukemia Cup & Commodore's Cup June 19th  
VXOne Great Lakes Championship June 19th and 20th  
Macatawa Bay Yacht Club  
Macatawa, MI

### **Sailing Instructions**

#### **1 RULES**

- 1.1 The regatta will be governed by the rules as defined in the Racing Rules of Sailing (RRS) and LMPHRF and the class rules of those classes sailing.
- 1.2 The Organizing Authority (OA) is the Macatawa Bay Yacht Club (MBYC).
- 1.3 RRS Appendix T – Arbitration will apply.
- 1.4 RRS Appendix V – Alternative Penalties will apply for all boats.
- 1.5 US Sailing Prescription to RSS 63.2 will not apply.
- 1.6 If there is a conflict between the NOR and the SI, the SI shall prevail. This changes RRS 63.7.

**2 NOTICES TO COMPETITORS** - Notices will be posted on Yachtscore.com and the Notice Board located on the wall adjacent to the MBYC Dockmaster's office in the Junior Sailing Center.

#### **3 CHANGES TO SAILING INSTRUCTIONS**

- 3.1 Any changes in the Sailing Instructions will be posted before 1000 hours on the day they will take effect, except that any change in the schedule will be posted before 2100 hours on the day before it will take effect.
- 3.2 The Race Committee may modify the Sailing Instructions on the racecourse by a broadcast over VHF radio channel 72.

#### **4 COURTESY BROADCASTS**

- 4.1 VHF channel 72 will be the designated hailing channel for all courtesy broadcasts.
- 4.2 A boat shall not request redress for errors or omissions in courtesy broadcasts. This changes RRS 62.1(a).
- 4.3 Boats shall monitor the designated hailing channel at all times from 30 minutes before the warning signal until 30 minutes after finishing.
- 4.4 Except in an emergency, a boat that is racing shall not make voice or data transmissions and shall not receive voice or data communication that is not available to all boats.



## **2021 Leukemia Cup - Commodore's Cup - VXOne Great Lakes Championship**

### **5 SIGNALS MADE ASHORE**

5.1 Signals made ashore will be displayed upon the flag pole located on the north side of the MBYC clubhouse or on the Race Committee ("RC") boat if tied to the dock or seawall.

5.2 When flag AP is displayed ashore "1 minute" is replaced with "not less than 60 minutes" in race signal AP.

### **6 SCHEDULE**

6.1 A competitors' meeting will be held at 1000 hours on June 19th on the patio of the Junior Sailing Center.

6.2 Competitors shall check-in with the Race Committee prior to the warning of the first race by sailing past the stern of the RC Signal vessel and hailing their sail number.

6.3 The scheduled time for the first signal of the first race on Saturday, June 19th is 1200 hours.

6.4 The scheduled time for the first signal of the first race on Sunday, June 20th is 1100 hours. (Only the VXONE Class will Race on Sunday) All other instructions remain intact.

6.5 Subsequent races will be as soon as possible after the end of the previous race and will be signaled by the displaying of code flag "R". The code flag "R" shall be lowered and an audible alert given at least one minute before the Warning Signal of each subsequent race.

6.6 Four (4) races are planned for each day.

6.7 No Warning Signal will be made after 1600 hours on Saturday and 1430 hours on Sunday.

6.8 After consultation with a fleet representative, the Race Committee may modify the above program according to prevailing weather conditions and/or other unforeseen circumstances.

### **6 CLASS FLAGS - ORDER OF START**

6.1 The intended start order for the first race will be announced at the skipper's meeting and broadcast on the hailing channel before the first warning of the day.

6.2 Section flags: VX – VXOne class flag; 7.9 - 7.9 class Flag; PHRF 1 - Numeral Pennant 1; PHRF 2 - Numeral Pennant 2; JAM – Numeral Pennant 3

6.3 The starting sequence will be posted on the display board on the Race Committee Boat prior to the first warning signal on each race day and will also be announced in a courtesy broadcast

6.4 After the first race has been completed, the Order of Start may be changed based upon conditions and Race Committee judgment.

6.5 Changes to the order of start will be posted on the display board on the Race Committee Boat. Change in starting order will also be announced in a courtesy broadcast. Competitors are responsible for monitoring the class flags displayed during each starting sequence.

**7 RACING AREA** – The sailing area will be in the open waters of Lake Michigan with the starting area intended to be approximately 1.5 nm from the Holland Pier.



## **2021 Leukemia Cup - Commodore's Cup - VXOne Great Lakes Championship**

### **8 THE COURSES**

8.1 Courses will be Windward / Leeward: 4 legs will be sailed with marks to be left to port.

8.2 RC may elect to set a triangle course for the JAM section.

8.3 No later than the warning signal, the race committee signal boat will display on course boards:

- the approximate compass bearing to Mark 1
- the distance to Long Mark 1
- the distance to Short Mark 1
- the course assignment for each class

8.4 The leeward mark is not a mark of the course for the first leg or a final downwind leg

### **9 MARKS**

9.1 Marks shall be orange tetrahedrons or cylinders. In the event of a course change, the new mark shall be yellow. Subsequent change marks will be replaced by the original mark.

### **10 THE START**

10.1 Races will be started by using rule 26. On Sunday the Race Committee may replace rule 26 with the Audible-Signal Racing System of Appendix U, a US Sailing prescription, which would be announced in a courtesy broadcast before the first warning.

10.2 The starting line will be between a staff displaying an orange flag on the RC signal boat at the starboard end and the adjacent mark at the port end.

10.3 Boats whose warning signal has not been made shall avoid the Starting Area. The Starting Area shall be defined as a parallelogram defined by the starting line and extensions, 50' outside the starboard tack lay lines for the ends of the line, and a line parallel to the starting line and extensions 100' downwind of the starting line.

10.4 A boat starting later than 10 minutes after her starting signal will be scored Did Not Start. This changes rule A4.

10.5 The Race Committee shall attempt a courtesy broadcast of the sail numbers of any OCS boats on channel 72. Failure to make a broadcast or timely order of broadcast will not be grounds for redress. This changes rule 62.1.

10.6 The race committee may elect to combine fleets for a start and will signal combined starts by displaying both class flags simultaneously and also made an announcement on the hailing channel before the warning.

10.7 Change of First Mark Between Starts - When signal flag C is displayed on the signal boat before the warning signal mark 1 will be a new mark as defined in instruction 9 and revised bearing and distances will be displayed. When in a subsequent change a new mark is replaced, it will be replaced by an original mark.



## **2021 Leukemia Cup - Commodore's Cup - VXOne Great Lakes Championship**

### **11 THE FINISH**

11.1 For Course 1, the finishing line will be between a staff displaying a blue flag on the RC signal boat at the port end and the orange start mark at the starboard end. For Course 2 and T, the finishing line will be between a staff displaying a blue flag on the RC signal boat at the starboard end and WHITE mark on the port end.

11.2 The Race Committee may give the last boat in fleets racing one-design its place prior to the finish.

### **12 TIME LIMIT**

12.1 The time limit for races shall be 90 minutes for the first boat to finish. Boats finishing 30 minutes after the first boat that sails the course finishes will be scored DNF. This changes RRS 35.

### **13 WITHDRAWAL**

13.1 A boat that retires from a race, shall notify the Race Committee before leaving the racecourse area or if that is impossible, immediately after arriving at the shore.

### **14 PROTESTS**

14.1 Protests shall be delivered to the Race Committee within 45 minutes after the RC signal boat docks. The protest time limit and a list of protests received will be posted on the Notice Board. Hearings will be held as soon as possible after racing each day. Protest forms are available at the Club Office and/or the signal boat.

### **15 SCORING**

15.1 PHRF fleets will be scored Time-on-Distance.

15.2 The Low Point Scoring system, RRS Appendix A, will apply.

15.3 There will be no throw outs for PHRF fleets. For all other classes if six or more races are completed one throw out will be allowed.

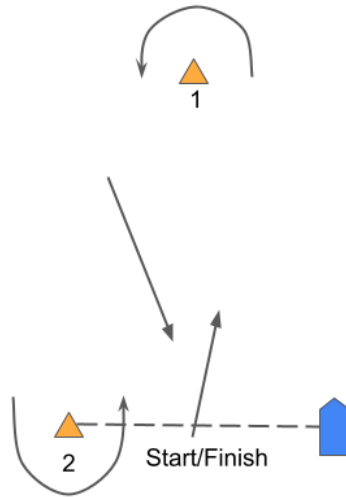
15.4 One race completed constitutes a series.

# 2021 Leukemia Cup - Commodore's Cup - VXOne Great Lakes Championship

## Addendum A - Course Diagrams

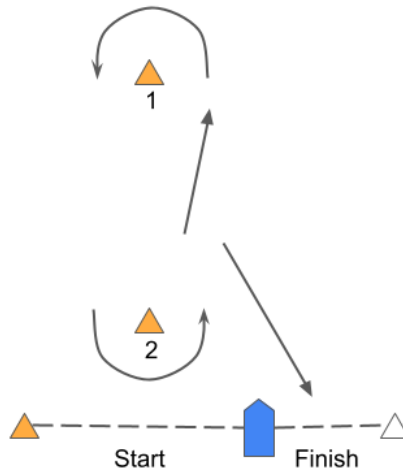
Course Diagram: Course 1: Windward/Leeward - 4 legs

Start-1-2-1-Finish



Course Diagram: Course 2: Windward/Leeward - 4 legs

Start-1-2-1-Finish



**2021 Leukemia Cup - Commodore's Cup - VXOne Great Lakes Championship**

**Addendum A - Course Diagrams**

Course Diagram: Course T: Triangle - 3 legs

Start-1-G-Finish

