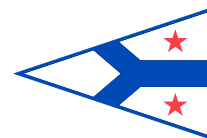




CHICAGO CORINTHIAN YACHT CLUB



SAILING INSTRUCTIONS - AMENDMENT #1

-- Spring Opener Long Distance --

5/29 & 5/30, 2021

9. COURSE

9.1. A course will be chosen by the Race Committee from the following list. The chosen course's letter designation ID shall be displayed on a white mark up board by the Race Committee no later than 10 minutes prior to the first warning signal. The Race Committee may also fly a pennant with the course's letter designation. The Race Committee will make courtesy broadcasts announcing the choice of course on channel 78 VHF. Failure to receive these communications shall not be grounds for redress. This changes RRS 62.1.. There are 10 possible courses. The denotation "P" or "S" after the name of the mark indicates the side on which the mark shall be passed. Otherwise, marks are to be left on the side noted after the course length.

9.2. COURSES

ID	MARKS OF THE COURSE	DISTANCE
E:	SA 'C' > SE2 > Dever Crib > SE > T "P" > V "P" > NW > FIN "P"	(15.81 NM, STARBOARD)
E-:	SA 'C' > SE2 > Dever Crib > Wilson Crib "P" > NW "P" > FIN "P"	(9.15 NM, STARBOARD)
N-:	SA 'C' > T > V > NW 'S' > FIN	(9.52 NM, PORT)
NE:	SA 'C' > E2 > R4 > NW "S" > FIN	(23.23 NM, PORT)
NE-:	SA 'C' > E2 > V > NW "S" > FIN	(9.22 NM, PORT)
S-:	SA 'C' > Dever Crib > SE2 > T > NW > FIN	(12.37 NM, PORT)
S:	SA 'C' > Dever Crib > 4 Mile Crib > SE2 > T > V > FIN	(18.44 NM, PORT)
SE:	SA 'C' > SE2 > R4 > 4 Mile Crib "P" > NW "P" > FIN "P"	(20.87 NM, STARBOARD)
NW	SA 'C' > Wilson Crib > V > T > SE2 > Dever Crib > NW "P" > FIN "P"	(18.45 NM, STARBOARD)
W:	SA 'C' > SW > V > T > SE2 > Dever Crib > NW "P" > FIN "P"	(19.75 NM, STARBOARD)

9.3. CCYC MAINTAINED & DROP MARKS

NOTE: LAT / LONG in DEGREES & DECIMAL MINUTES				
CCYC MARKS	Color	Approximate Latitude/Longitude		Description
SA 'C'	Orange	N41.56.50	W087.34.00	CCYC DROP MARK
CP (SA 'A')	White	N41.57.74	W087.36.40	CCYC circle center
N	White	N41.58.49	W087.36.40	CCYC circle north mark
NE	White	N41.58.27	W087.35.69	CCYC circle northeast mark
E	White	N41.57.74	W087.35.40	CCYC circle east mark
SE	White	N41.57.21	W087.35.69	CCYC circle southeast mark
S	White	N41.56.99	W087.36.40	CCYC circle south mark
SW	White	N41.57.21	W087.37.11	CCYC circle southwest mark
W	White	N41.57.74	W087.37.40	CCYC circle west mark
NW	White	N41.58.27	W087.37.11	CCYC circle northwest mark
V	White	N42.00.74	W087.36.40	CCYC distant north mark
T	White	N42.00.12	W087.33.07	CCYC distant northeast mark
E2	White	N41.57.74	W087.32.40	CCYC distant east mark
SE2	White	N41.55.83	W087.31.63	CCYC distant southeast mark
FIN	Tetrahedron	N41.57.68	W087.37.74	CCYC DROP MARK



CHICAGO CORINTHIAN YACHT CLUB



SAILING INSTRUCTIONS - AMENDMENT #1

-- Spring Opener Long Distance --

5/29 & 5/30, 2021

9.4. GOVERNMENT MARKS UTILIZED

NOTE: LAT / LONG in DEGREES & SECONDS			
USCG Marks	Approximate Latitude/Longitude		USCG Light List #
Wilson Crib	N41-58-00	W087-37-53	20130
Dever Crib	N41-55-00	W087-34-18	20040
4 Mile Crib	N41-52-24	W087-32-42	19925
GrossePoint 'R' #4	N42-08-14.390	W087-35-17.507	20255

SEE FOLLOWING PAGES FOR COURSE DIAGRAMS.

CHICAGO CORINTHIAN YACHT CLUB

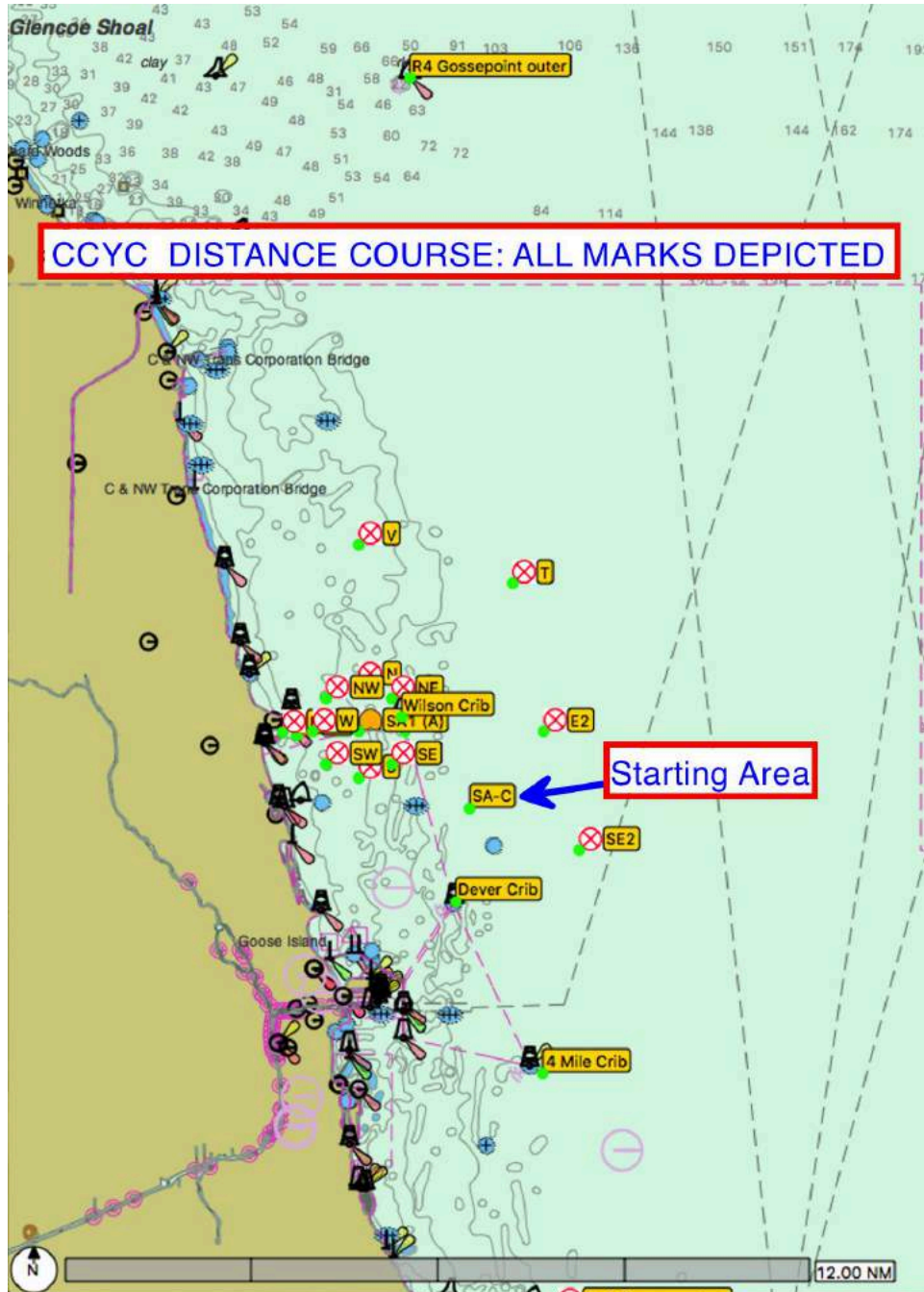


SAILING INSTRUCTIONS - AMENDMENT #1

-- Spring Opener Long Distance --

5/29 & 5/30, 2021

- ALL MARKS DEPICTED



CHICAGO CORINTHIAN YACHT CLUB

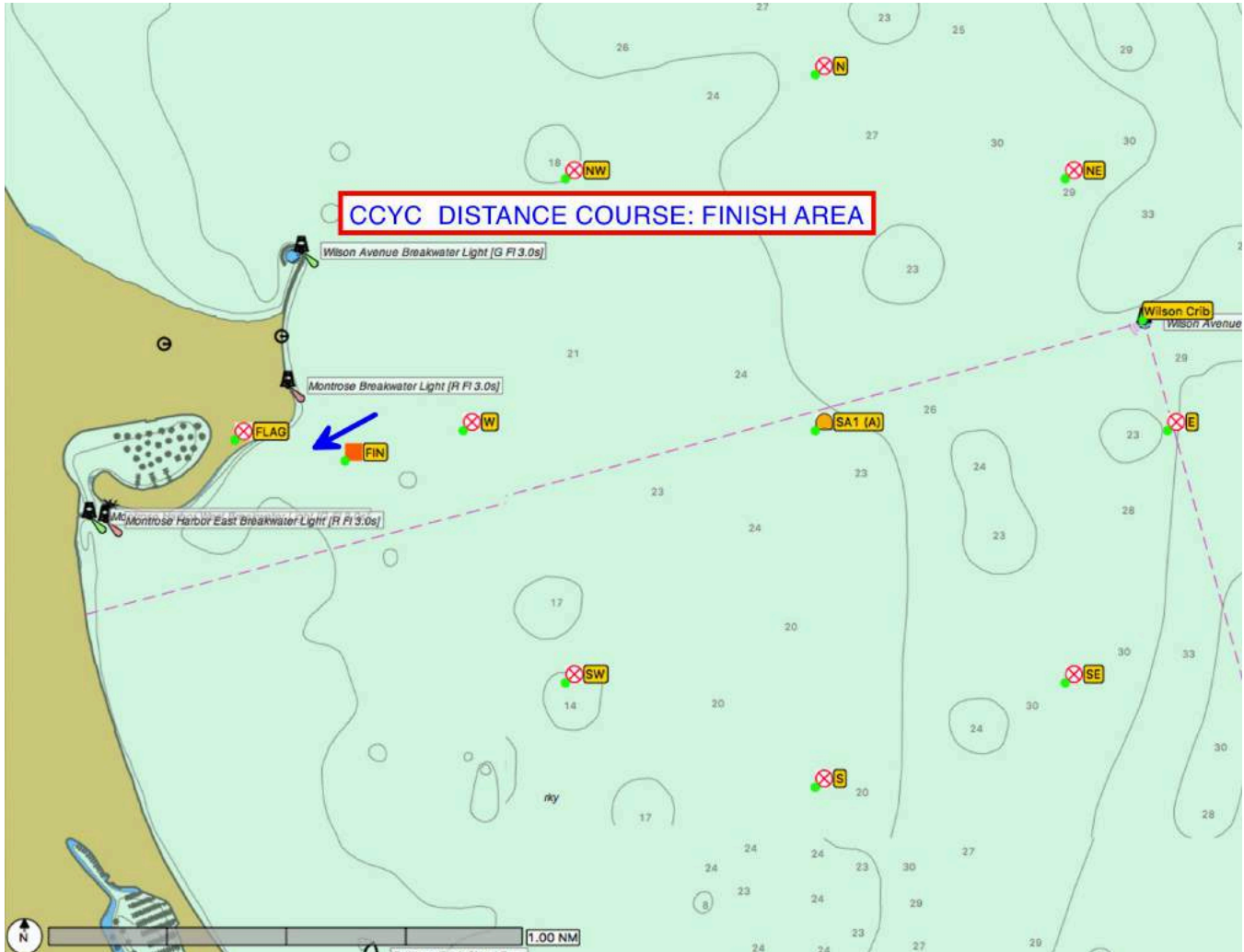


SAILING INSTRUCTIONS - AMENDMENT #1

-- Spring Opener Long Distance --

5/29 & 5/30, 2021

- FINISH MARK DETAILS



CHICAGO CORINTHIAN YACHT CLUB

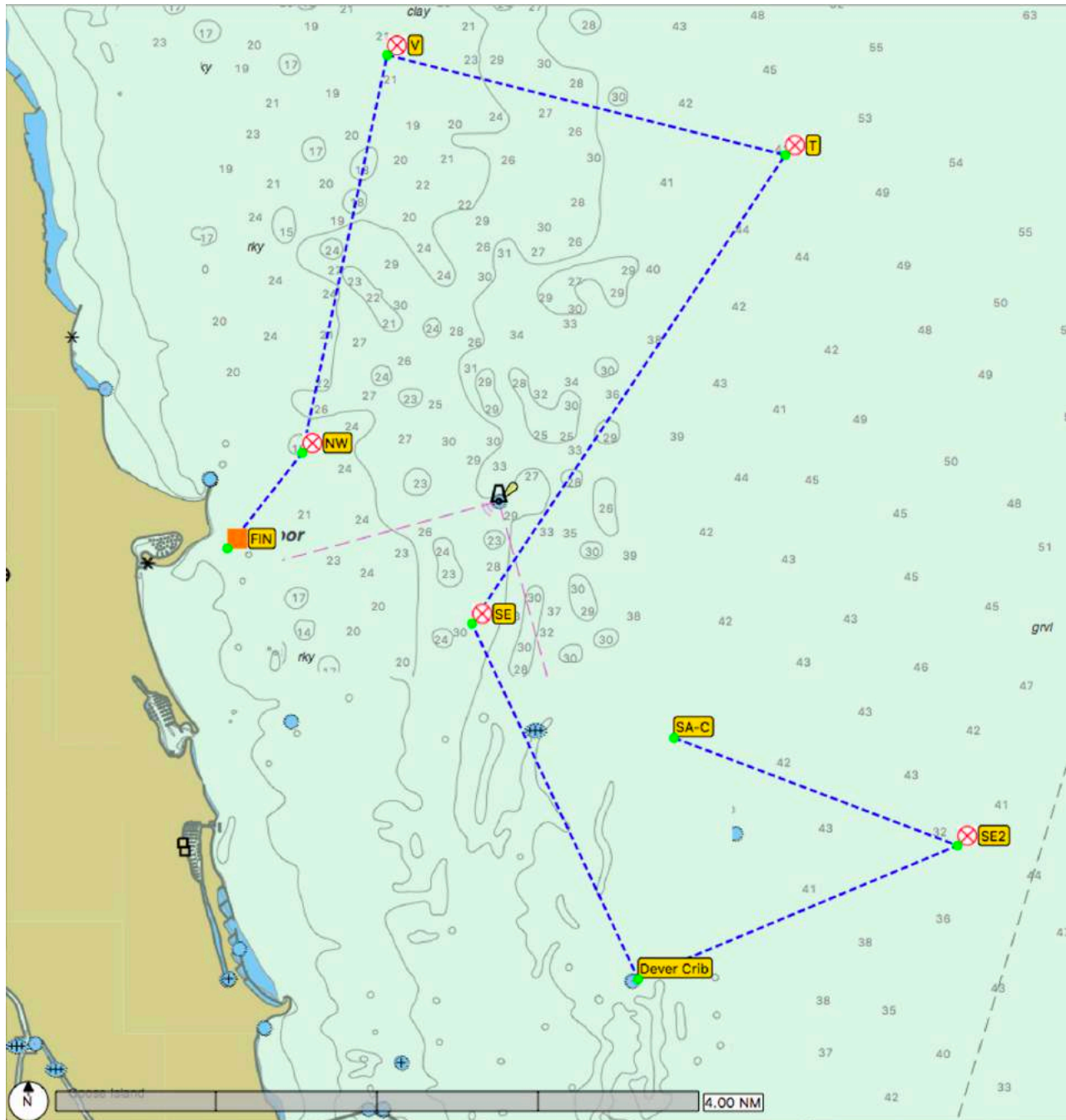


SAILING INSTRUCTIONS - AMENDMENT #1

-- Spring Opener Long Distance --

5/29 & 5/30, 2021

COURSE "E" (15.81 nm)





CHICAGO CORINTHIAN YACHT CLUB

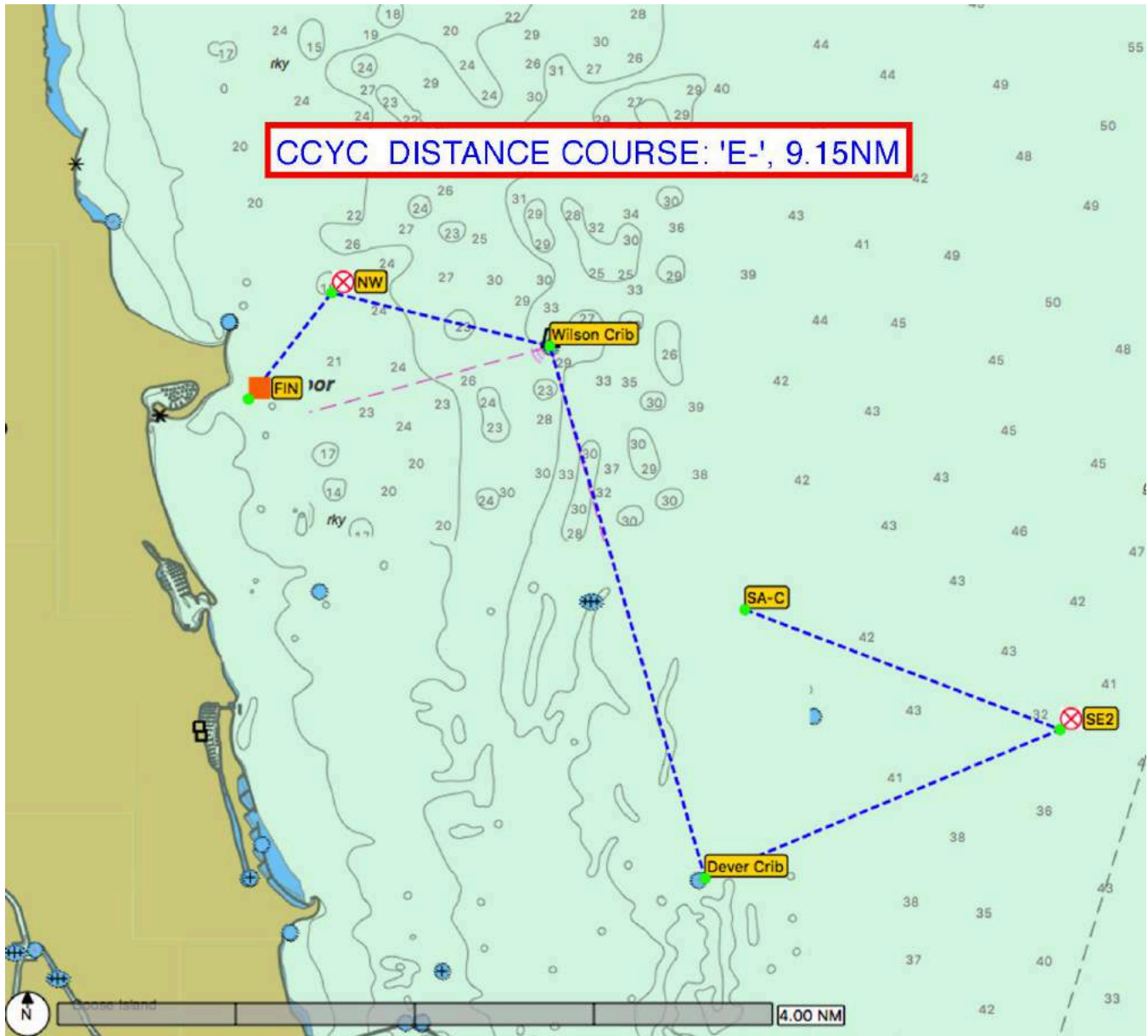


SAILING INSTRUCTIONS - AMENDMENT #1

-- Spring Opener Long Distance --

5/29 & 5/30, 2021

COURSE "E-" (9.15 nm)



CHICAGO CORINTHIAN YACHT CLUB

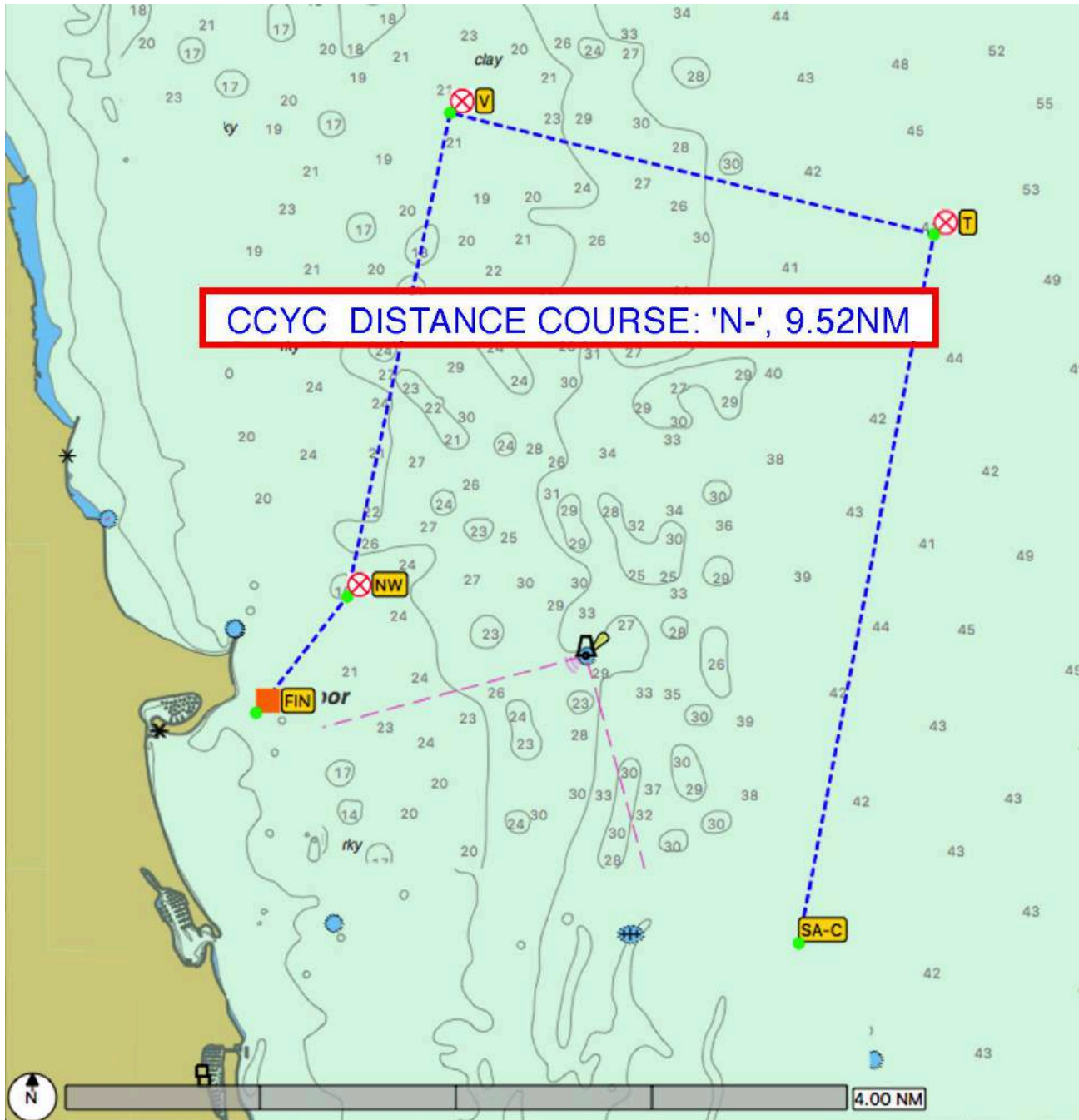


SAILING INSTRUCTIONS - AMENDMENT #1

-- Spring Opener Long Distance --

5/29 & 5/30, 2021

COURSE "N-" (9.52 nm)



CHICAGO CORINTHIAN YACHT CLUB

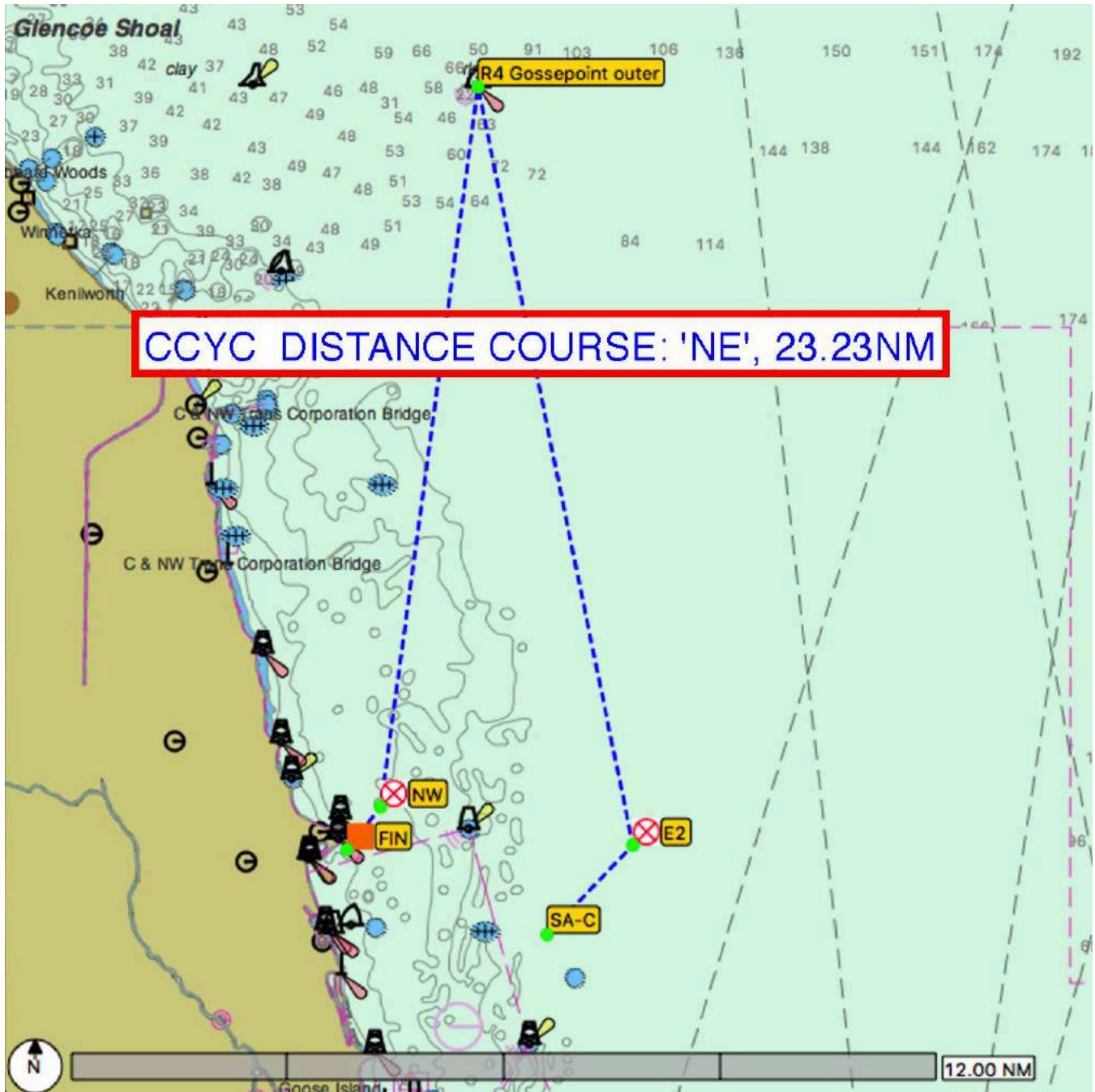


SAILING INSTRUCTIONS - AMENDMENT #1

-- Spring Opener Long Distance --

5/29 & 5/30, 2021

COURSE "NE" (23.23 nm)



CHICAGO CORINTHIAN YACHT CLUB

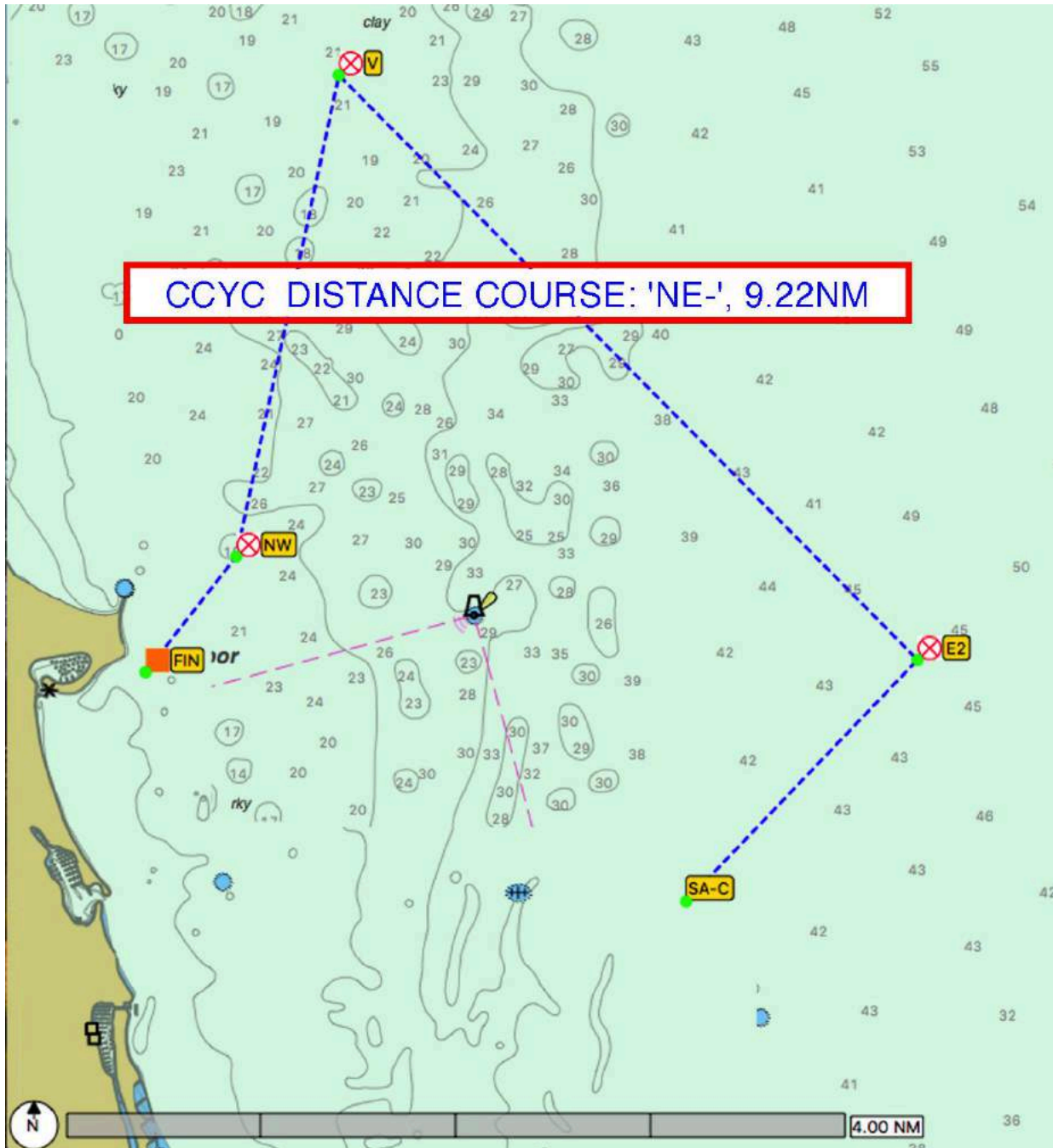


SAILING INSTRUCTIONS - AMENDMENT #1

-- Spring Opener Long Distance --

5/29 & 5/30, 2021

COURSE "NE-" (9.22 nm)





CHICAGO CORINTHIAN YACHT CLUB

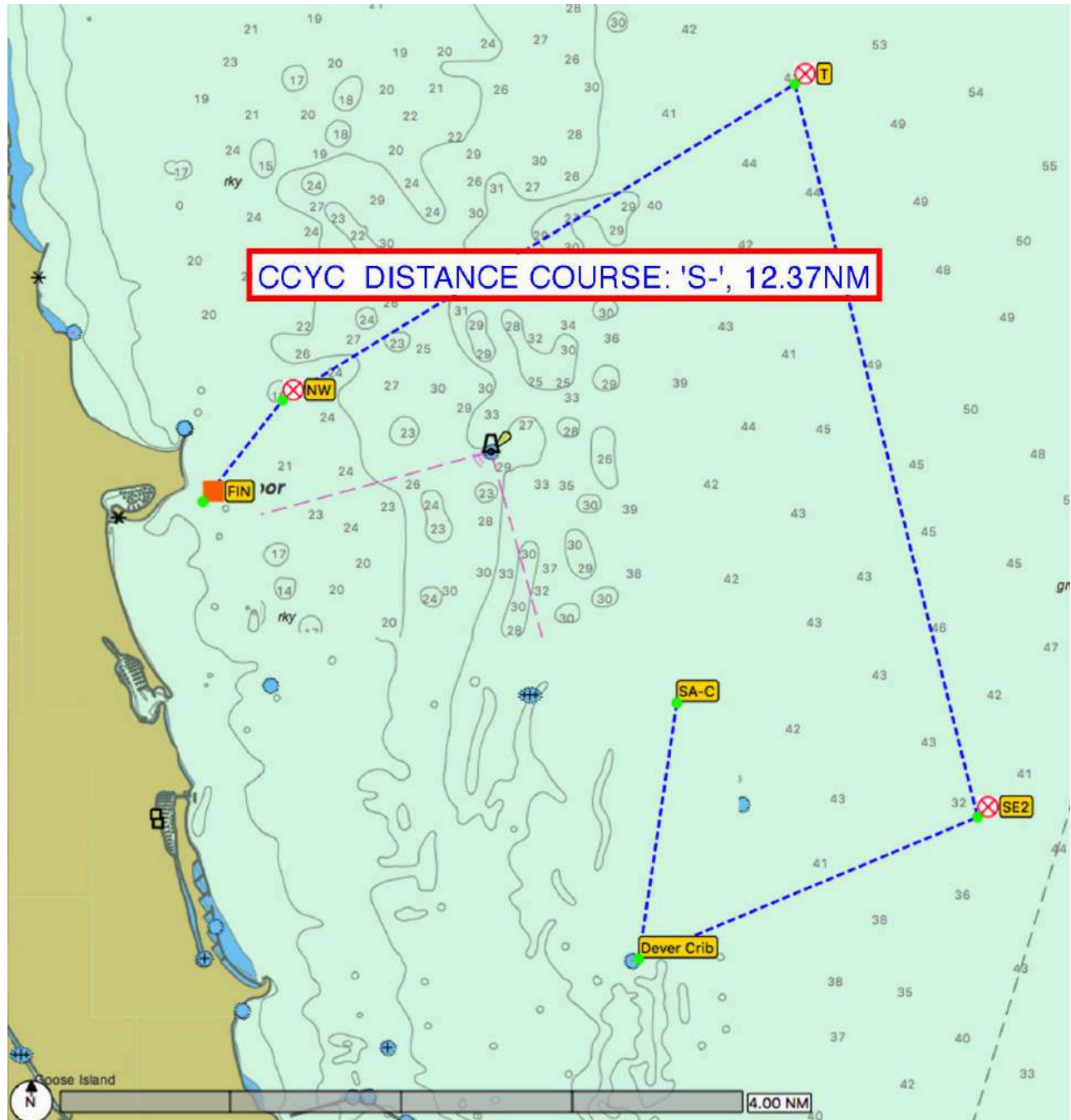


SAILING INSTRUCTIONS - AMENDMENT #1

-- Spring Opener Long Distance --

5/29 & 5/30, 2021

COURSE "S-" (12.37 nm)



CHICAGO CORINTHIAN YACHT CLUB

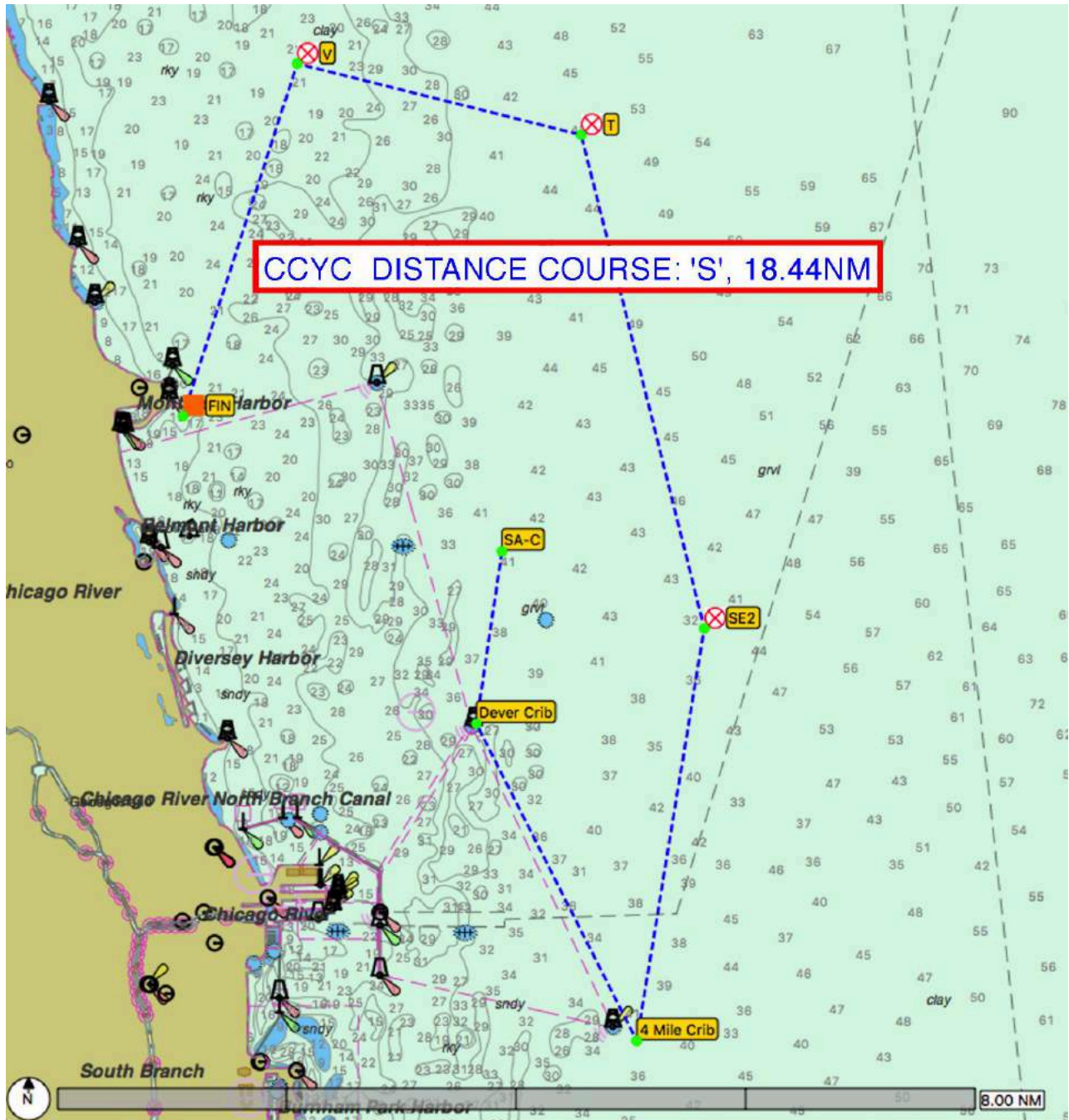


SAILING INSTRUCTIONS - AMENDMENT #1

-- Spring Opener Long Distance --

5/29 & 5/30, 2021

COURSE "S" (18.44 nm)



CHICAGO CORINTHIAN YACHT CLUB

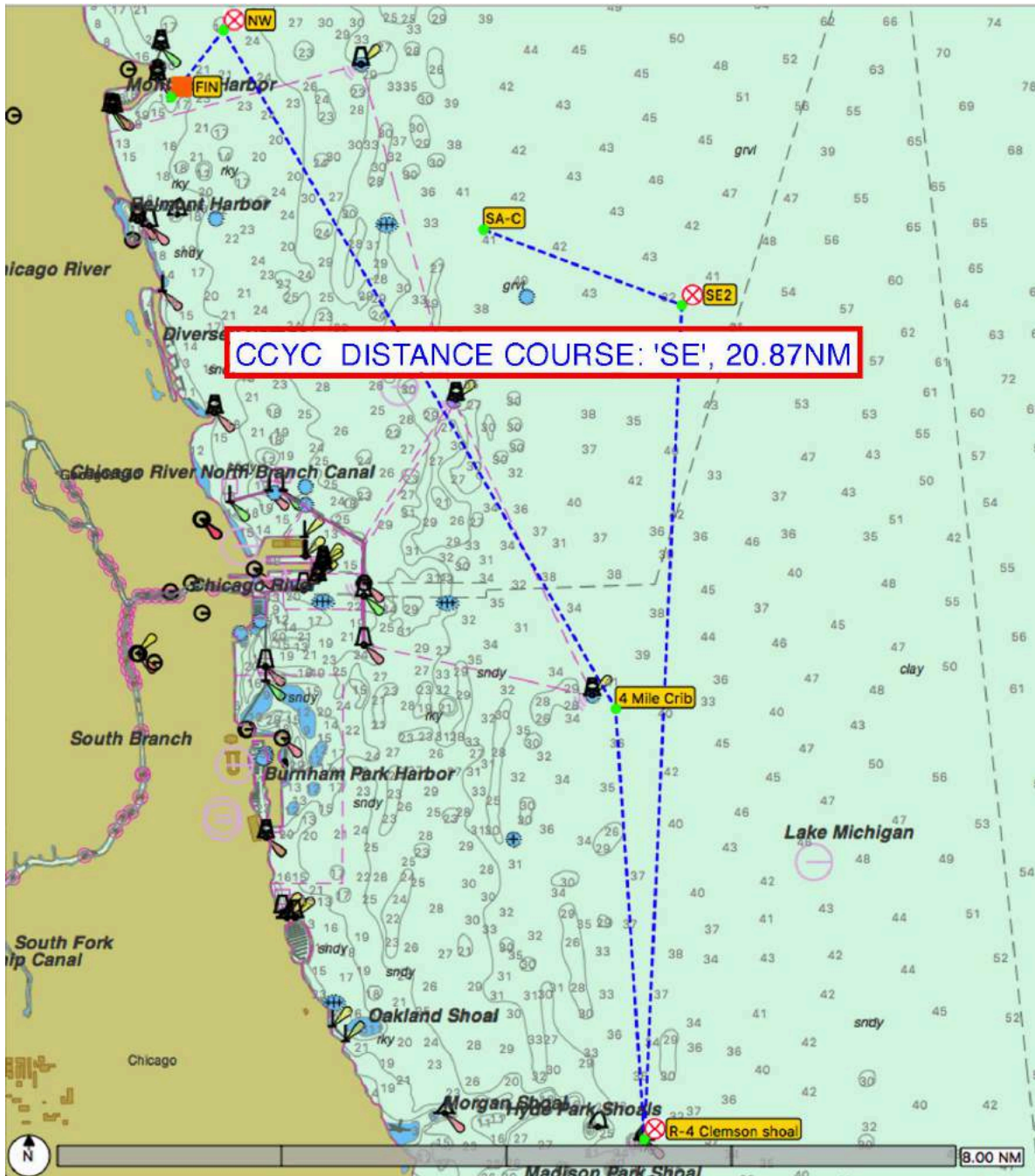


SAILING INSTRUCTIONS - AMENDMENT #1

-- Spring Opener Long Distance --

5/29 & 5/30, 2021

COURSE "SE" (20.87 nm)





CHICAGO CORINTHIAN YACHT CLUB

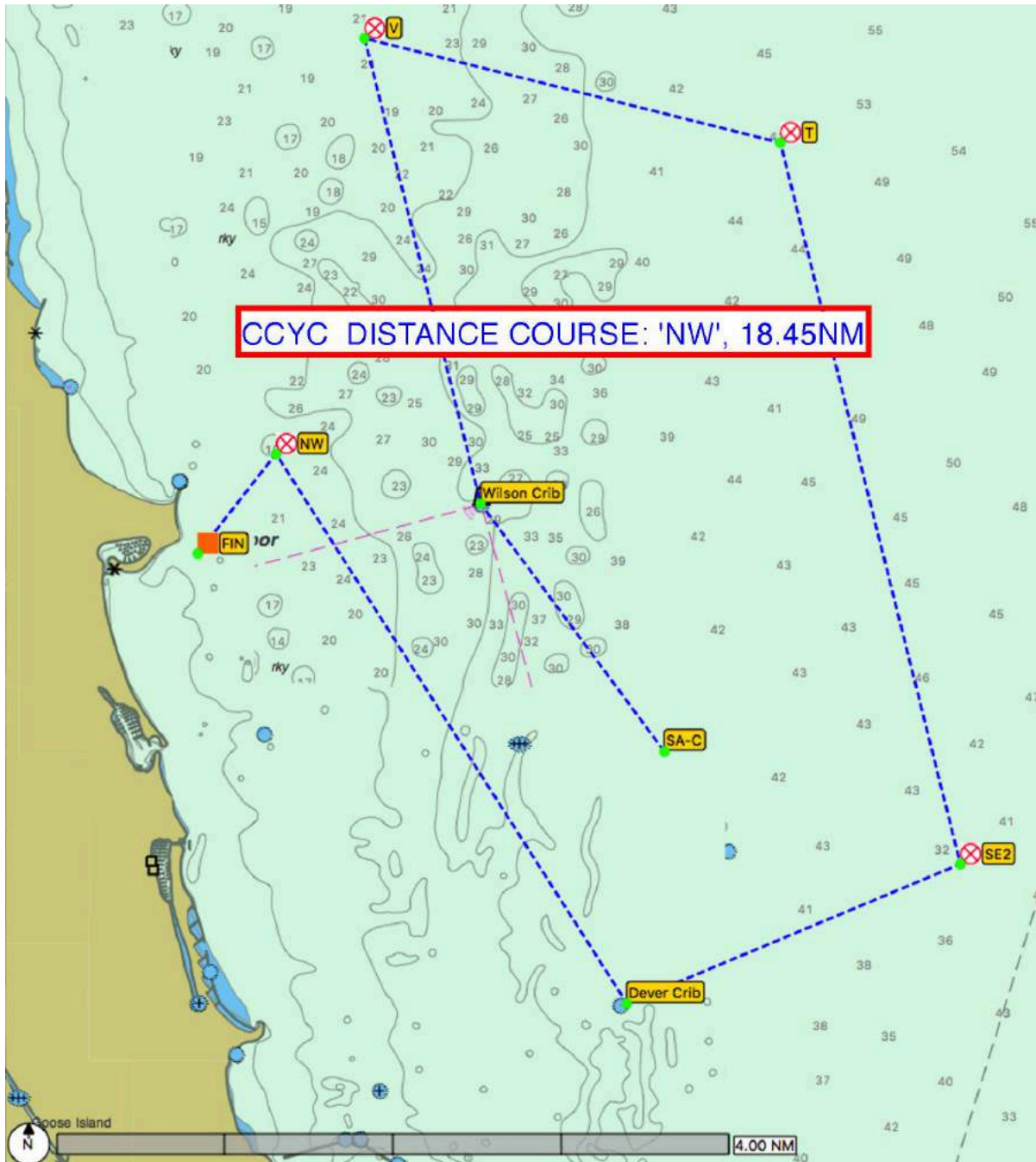


SAILING INSTRUCTIONS - AMENDMENT #1

-- Spring Opener Long Distance --

5/29 & 5/30, 2021

COURSE "NW" (18.45 nm)



CHICAGO CORINTHIAN YACHT CLUB



SAILING INSTRUCTIONS - AMENDMENT #1

-- Spring Opener Long Distance --

5/29 & 5/30, 2021

COURSE "W" (19.75 nm)

