



2021 Racing Yacht Fleet Series
Chicago Yacht Club
May 29-August 21st, 2021
Belmont Station, Chicago, IL

Sailing Instructions (SIs)

ABBREVIATIONS

[SP] Rules for which a standard penalty may be applied by the race committee without a hearing or a discretionary penalty applied by the protest committee with a hearing.

[DP] Rules for which the penalties are at the discretion of the protest committee.

[NP] Rules that are not grounds for a protest or request for redress by a boat. **This changes RRS 60.1(a).**

1 RULES

- 1.1 The event is governed by the *rules* as defined in *The Racing Rules of Sailing*.
- 1.2 Appendices T and V1 shall apply.
- 1.3 All applicable governmental regulations regarding health, safety and infectious disease control shall be strictly followed by all competitors.
- 1.4 Competitors using any Chicago Yacht Club facilities, including docks, shall follow [House and Ground Rules In Effect Due to Covid-19](#).
- 1.5 Crew substitutions or changes shall be recorded online prior to the start of racing each day.
- 1.6 Violations of Section 1.3, 1.4, and 1.5 of these Sailing Instructions shall not be protestable by a competitor but may be protested by the Race Committee or Organizing Authority. **This changes RRS 60.1.**
- 1.7 The rules of the International Etchells Class, International J/70 Class, and the Shields Class shall apply for their respective entries.

2 CHANGES TO SAILING INSTRUCTIONS

- 2.1 Any change to the sailing instructions will be posted before 0900 on the day it will take effect, except that any change to the schedule of races will be posted by 2000 on the day before it will take effect.

3 COMMUNICATIONS WITH COMPETITORS

- 3.1 Notices to competitors will be posted on the official notice board online at <https://yachtscoring.com/emenu.cfm?eid=14599>.
- 3.2 On the water, the race committee intends to monitor and communicate with competitors via VHF radio on channel 73.
- 3.3 **[DP]** All boats shall carry a VHF radio capable of communicating on US Marine Frequencies. **This changes International Etchells Class Rules C.5.2(b) and Shields Class Rule Section IV-10.9.**
- 3.4 **[DP]** While racing, except in an emergency, a boat shall not make voice or data transmissions and shall not receive voice or data communication that is not available to all boats.

4 CODE OF CONDUCT

- [DP]** Competitors and support persons shall comply with reasonable requests from race officials.



5 SIGNALS MADE ASHORE

- 5.1 Signals made ashore will be displayed from the main flagpole at the northeast of the Belmont Station barge. In addition, signals made ashore will be distributed, as a courtesy, to the email or text address listed in a boat's entry form. Failure to receive courtesy electronic communications shall not be grounds for a request for redress. ***This changes RRS 62.1(a).***
- 5.2 When flag AP is displayed ashore, '1 minute' is replaced with 'not less than 60 minutes' in Race Signals AP.

6 SCHEDULE OF RACES

- 6.1 Races will be held on the following schedule:

May 29 th , 2021
June 5 th , 2021
June 19 th , 2021
July 10 th , 2021
July 31 st , 2021
August 7 th , 2021
August 21 st , 2021

- 6.2 Up to 3 races will be scheduled each day.
- 6.3 The scheduled warning signal for the first race each day is 1055.
- 6.4 Each day, no warning signal will be made after 1500.

7 CLASS FLAGS

<u>Class</u>	<u>Flag</u>
Shields	Class Insignia
International Etchells	Class Insignia
J/70	Numeral Pennant Seven (7)

8 RACING AREA

The racing area is located in Lake Michigan approximately two nautical miles east of the Belmont Harbor red nun buoy or as posted on the official notice board.

9 COURSES

- 9.1 Addendum A shows the courses, including the approximate angles between legs, the order in which marks are to be passed, and the side on which each mark is to be left.
- 9.2 No later than the warning signal, the race committee signal vessel will display the approximate compass bearing of the first leg.

10 MARKS

- 10.1 Marks will be orange inflatable shapes or orange robotic marks.
- 10.2 Routine movement of robotic marks will not be grounds for redress. This includes marks returning to station after having been pushed away by a boat or competitor and collisions with marks that do not cause damage. RRS 31 still applies.



11 OBSTRUCTIONS

The following area(s) are designated as an obstruction:

- a) The area around the pumping stations (cribs) and the marks placed around them by the US Coast Guard. Boats shall not sail between the marks.

12 THE START

- 12.1 Races will be started using RRS 26.
- 12.2 The starting line is between a staff displaying an orange flag on the signal vessel at the starboard end and the course side of the port-end starting mark.
- 12.3 Boats whose warning signal has not been made shall avoid the starting area during the starting sequence for other races.
- 12.4 If any part of a boat's hull is on the course side of the starting line at her starting signal and she is identified, the race committee will attempt to hail her sail number. Failure to hail her number, failure of her to hear such a hail, or the order in which boats are hailed will not be grounds for a redress for request. ***This changes RRS 62.1(a).***
- 12.5 A boat that does not start within four minutes after her starting signal will be scored Did Not Start (DNS) without a hearing. ***This changes RRS A5.1 and A5.2.***
- 12.6 The race committee may combine classes for a start by displaying both class flags at the warning.
- 12.7 The race committee may modify the starting sequence after the first race of the series for any subsequent races.
- 12.8 Change of First Mark at the Start - When signal flag C is displayed on the signal boat at or before the warning signal, Mark 1 will be a new mark as defined in instruction 13 and revised bearing and distances will be displayed. Code Flag C will remain displayed through the starting sequence. If there is a subsequent change and the new mark is replaced, it will be replaced by an original mark. ***This changes RRS 27.1 and 33.***
- 12.9 Any self-correction movement by a robotic mark on the starting line shall not be considered an improper action of the RC and not grounds for redress under RRS 62.1(a). This is added RRS 27.2.
- 12.10 Initial Start Sequence and Class Flags:

<u>Class</u>	<u>Flag</u>
J/70	Numeral Pennant Seven (7)
International Etchells Shields	Class Insignia
	Class Insignia

13 CHANGE OF THE NEXT LEG OF THE COURSE

- 13.1 The angles from marks 1/1a to marks 2s/2p may be changed up to 15 degrees in either direction to compensate for wind/current differences without signals or change marks, provided the change is made before any boat begins that leg. This is added to RRS 33.
- 13.2 To change the next leg of the course, the race committee will lay a new mark (or move the finishing line) and remove the original mark as soon as practicable. When in a subsequent change a new mark is replaced, it will be replaced by an original mark.

14 THE FINISH

- 14.1 The finishing line is between a staff displaying a blue flag on the signal vessel and the finishing mark per the course diagrams in Addendum A.
- 14.2 Flag A displayed, with no sound signal, while boats are finishing means "No more racing today."



15 PENALTY SYSTEM

15.1 Appendices T and V1 shall apply.

16 TIME LIMITS

16.1 The Mark 1 Time Limit, Race Time Limit (see RRS 35), and the Finishing Window are shown in the table below in minutes.

Mark 1 Time Limit	Race Time Limit	Finishing Window
30 minutes	120 minutes	30 minutes

16.2 If no boat has passed the first mark within the Mark 1 Time Limit, the race will be abandoned.

16.3 The Finishing Window is the time for boats to finish after the first boat sails the course and finishes. Boats failing to finish within the Finishing Window, and not subsequently retiring, penalized or given redress, will be scored Time Limit Expired (TLE) without a hearing. A boat scored TLE shall be scored points for the finishing place one more than the points scored by the last boat that finished within the Finishing Window. ***This changes RRS 35, A5.1, A5.2 and A10.***

17 HEARING REQUESTS

17.1 Protests and requests for redress shall be filed in person at the protest desk at Chicago Yacht Club Belmont Station within the appropriate time limit.

17.2 Alternatively, hearing requests forms are available from the US Sailing RRS mobile app and can be submitted to regattamanager@chicagoyachtclub.org within the appropriate time limit.

17.2 A boat’s protest time limit is 60 minutes from the docking time of the Signal Boat for her circle.

17.3 Hearings will be held in person at Belmont Station in a socially distant manner.

18 SCORING

18.1 The scoring system is as follows: Low Point Scoring.

18.2 Rule A5.3 applies.

18.3 3 races are required to be completed to constitute a series.

18.4 A boat’s series score shall be the total of her race scores, with the following exclusions based on number of races completed per class. ***This changes RRS A2.:***

< 7 Races	0 Exclusions
7 – 13 Races	1 Exclusion
14 – 20 Races	2 Exclusions
> 20 Races	3 Exclusions

18.5 Scoring inquiries shall be filed online at the event website at www.yachtscoring.com.

19 SAFETY REGULATIONS

19.1 **[SP]** Each boat shall check in by sailing past the race committee signal boat, hailing or displaying her sail number, and receiving an acknowledgement from the race committee prior to her first race on each day of racing. A boat found to have broken SI 19.1 may receive a scoring penalty for her first race that day equal to 20% of the number of competitors registered in her class.

19.2 **[SP]** A boat that retires from a race shall notify the race committee either before leaving the course or, if that is impracticable, immediately after arriving ashore. A boat may notify the race committee using the designated VHF hailing channel. A boat found to have broken SI 19.2 may receive a scoring penalty in every race that day equal to 20 percent of the number of competitors registered in her class. ***This changes RRS 63.1.***



27 RISK STATEMENT

Competitors participate in the regatta entirely at their own risk. See RRS 3, Decision to Race. The organizing authority will not accept any liability for material damage, personal injury, or death sustained in conjunction with or prior to, during, or after the regatta.

28 INSURANCE

Each participating boat shall be insured with a valid third-party liability insurance with a minimum cover of \$300,000 per incident or the equivalent. Competitors shall be prepared to supply proof of insurance upon request by the OA.

29 PRIZES

Prizes will be awarded in accordance with the NoR.

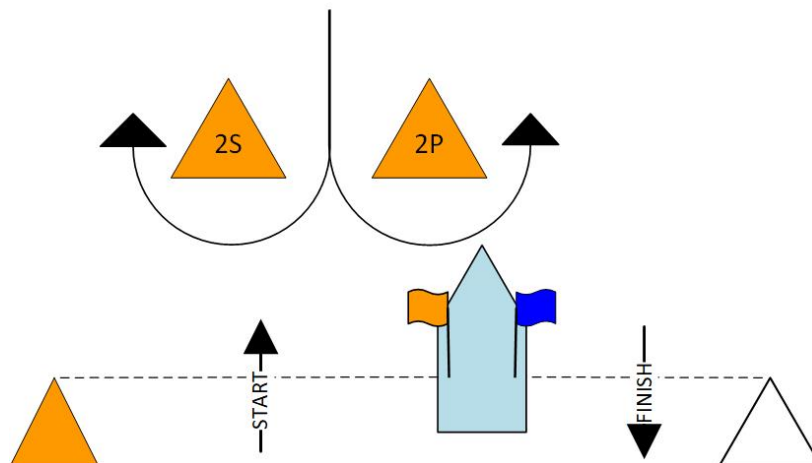
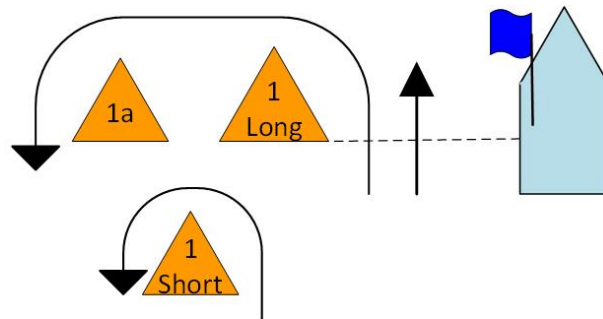
30 FURTHER INFORMATION

Regatta Manager
Chicago Yacht Club
400 E Monroe St, Chicago, IL 60603
312-861-7777, Ext. 5562 (o)
312-617-2279 (m)
regattamanager@chicagoyachtclub.org



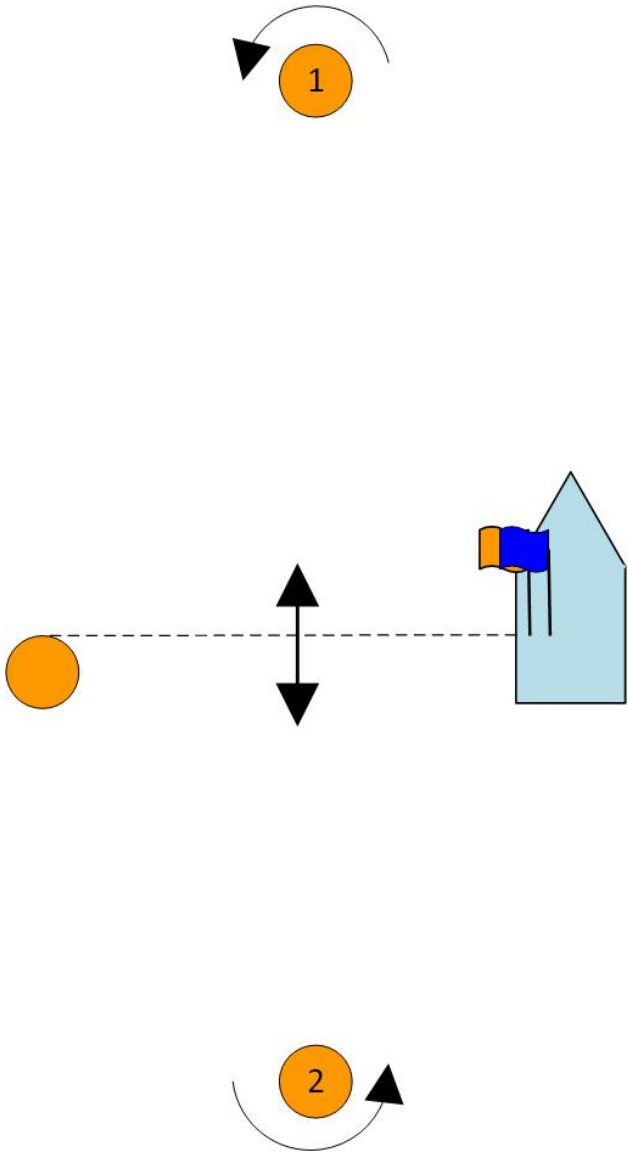
Addendum A Course Diagrams

Course Assignment	4 Legs	5 Legs
LL (Long, Long)	Start - Long Mark 1 - Mark 2 - Long Mark 1 - Finish	Start - Long Mark 1 - Mark 2 - Long Mark 1 - Mark 2 - Finish
LS (Long, Short)	Start - Long Mark 1 - Mark 2 - Short Mark 1 - Finish	Start - Long Mark 1 - Mark 2 - Short Mark 1 - Mark 2 - Finish
SS (Short, Short)	Start - Short Mark 1 - Mark 2 - Short Mark 1 - Finish	Start - Short Mark 1 - Mark 2 - Short Mark 1 - Mark 2 - Finish
B (Bravo)	Start - Mark 1 - Pin/Mark 2 - Mark 1 - Finish	
BL (Bravo Long)	Start - Long Mark 1 - Pin/Mark 2 - Long Mark 1 - Finish	
BS (Bravo Short)	Start - Short Mark 1 - Pin/Mark 2 - Short Mark 1 - Finish	
W (Whiskey)	Start - 1 - 2 - 1 - Finish	Start - 1 - 2 - 1 - 2 - Finish





Course W – Windward/Leeward



Course B – Windward/Leeward

