



2022 INTERNATIONAL ETHELLS BISCAYNE BAY REGATTA SERIES (IEBBS)

BISCAYNE BAY YACHT CLUB
2540 South Bayshore Drive
Coconut Grove, Florida 33133

SAILING INSTRUCTIONS

Etchells Fleet 20 is the organizing authority, the Biscayne Bay Yacht Club (BBYC) is the host club, and the BBYC Regatta Committee is designated as race committee.

1 RULES:

- 1.1 The event will be governed by the *rules* as defined in *The Racing Rules of Sailing* (RRS).
- 1.2 The following US Sailing prescriptions will apply: rule 61.4, prescriptions to rules 60.3, 67, 76.1, and Appendices R and V. See **Appendix A, US SAILING PRESCRIPTIONS**. No other prescriptions will apply.
- 1.3 Arbitration will be offered in accordance with US Sailing Appendix T.

2 CHANGES TO SAILING INSTRUCTIONS

- 2.1 Any change to the sailing instructions will be posted before 0900 on the day it will take effect, except that any change to the schedule of races will be posted by 2000 on the day before it will take effect.

3 COMMUNICATION WITH COMPETITORS

- 3.1 Notices to competitors will be posted on the Official Notice Board (ONB) located at https://yachtscoring.com/notice_board.cfm?eid=14749.
- 3.2 The Race Office is in the Biscayne Bay Yacht Club (BBYC).
- 3.3 On the water, the race committee intends to monitor and communicate with competitors on VHF channel 72.
- 3.4 While racing, except in emergency, a boat shall not make voice or data transmissions and shall not receive voice or data communication that is not available to all boats.

4 CODE OF CONDUCT

- 4.1 Competitors and support persons shall comply with reasonable requests from race officials.

5 SIGNALS MADE ASHORE

- 5.1 Signals made ashore will be displayed from the south flagpole at Biscayne Bay Yacht Club.
- 5.2 When flag AP is displayed ashore, '1 minute' is replaced with 'not less than 60 minutes' in RACE SIGNAL AP.

6 SCHEDULE AND EVENTS

6.1 Schedule:

Louis Piana Cup:	December 11-12, 2021	
Friday, December 10, 2021	09:00-12:00; 16:00-18:00	Registration/check-in
Saturday, December 11, 2021	09:00 10:55	Competitor's Briefing First warning (3 races scheduled)
Sunday, December 12, 2021	09:00 10:55	Competitor's Briefing First warning (2 races scheduled)
Sidney Doren Memorial Regatta:	January 8-9, 2022	
Friday, January 7, 2022	09:00-12:00; 16:00-18:00	Registration/check-in
Saturday, January 8, 2022	09:00 10:55	Competitor's Briefing First warning (3 races scheduled)
Sunday, January 9, 2022	09:00 10:55	Competitor's Briefing First warning (2 races scheduled)
Florida State Championship:	February 5-6, 2022	
Friday, February 4, 2022	09:00-12:00; 16:00-18:00	Registration/weigh-in
Saturday, February 5, 2022	08:00-08:45 09:00 10:55	Crew weigh-in Competitor's Briefing First warning (3 races scheduled)
Sunday, February 6, 2022	09:00 10:55	Competitor's Briefing First warning (2 races scheduled)
US Midwinters East Regatta:	February 25-27, 2022	
Thursday, February 24, 2022	09:00-12:00; 16:00-18:00	Registration/weigh-in
Friday, February 25, 2022	08:00-08:45 09:00 10:55	Crew weigh-in Competitor's Briefing First warning (3 races scheduled)
Saturday, February 26, 2022	09:00 10:55	Competitor's Briefing First warning (3 races scheduled)
	09:00 10:55	Competitor's Briefing First warning (2 races scheduled)

7 CLASS FLAG

7.1 The class flag will be the Etchells Class insignia on a white background.

8 RACING AREA

8.1 The racing area will be on Biscayne Bay approximately 2 nm south of Biscayne Channel Mark G1 (Fl G 2.5s 5m "1"). See SI **Appendix B RACING AREA**.

9 COURSES

- 9.1 The format of the courses will be windward/leeward. See SI **Appendix C COURSES**.
- 9.2 The course number and the approximate magnetic bearing and distance to the first mark will be posted on the signal vessel prior to the warning signal with a VHF announcement.
- 9.3 Course 4: Start-Windward-Leeward-Windward-Leeward-Finish.
- 9.4 Course 5: Start-Windward-Leeward-Windward-Leeward-Windward-Finish
- 9.5 There will be an offset mark at approximately three boat lengths at 90 degrees to port of the weather mark. The offset mark will be smaller and a different color and/or shape than the weather mark.
- 9.6 Marks of the course are to be left to port, except for a leeward gate where boats are to pass between gate marks in the direction from the prior mark and may leave the marks in either direction.
- 9.7 In the presence of a single weather or leeward mark, the mark is to be left to port.

10 MARKS OF THE COURSE

- 10.1 Either anchored or automated inflatable marks may be employed.
- 10.2 Mark 1a will be an orange cylinder inflatable mark.
- 10.3 Mark 1b (offset) will be a green triangle inflatable mark.
- 10.4 Marks 2s and 2p will be yellow cylinder inflatable marks.

11 THE START

- 11.1 Boats will **CHECK-IN** each day prior to the first warning signal by sailing on starboard past the stern of the race committee signal vessel, until the boat receives an acknowledging hail of her bow number from the race committee.
- 11.2 To alert boats that a race is about to begin soon, approximately five minutes prior to the warning signal the starting line staff/flag will be displayed accompanied by multiple sound signals and VHF radio announcement.
- 11.3 The starting line will be between a staff displaying an orange flag on a vessel at the starboard end and a staff displaying an orange flag on a vessel at the port end, or the course side of an inflatable mark.
- 11.4 A boat starting later than 4 minutes after her starting signal will be scored Did Not Start without a hearing. This changes rules A5.1 and 5.2.
- 11.5 If any part of a boat's hull is on the course side of the starting line at the starting signal and the boat is identified, the race committee will attempt to broadcast her bow number. Failure to identify a boat, make a broadcast, a boat failing to hear a broadcast or the order and interval of transmission will not be grounds for redress. This changes rule 62.1(a).

12 CHANGE OF THE NEXT LEG OF THE COURSE

- 12.1 To change the next leg of the course the race committee will move the original mark(s) or finish line, although it may not be in position before the leading boat begins the leg.

13 THE FINISH

- 13.1 The finishing line will be between a staff displaying an orange flag on a race committee vessel at the starboard end and a staff displaying an orange flag on a vessel on the port end, or the course side of an inflatable mark.

14 PENALTY SYSTEM

- 14.1 The first two sentences of rule 44.1 are changed to: 'A boat may take a One-Turn Penalty when she may have broken one or more rules of Part 2 or rule 31 in an incident while racing. However, when she may have broken one or more rules of Part 2 while in the zone around a mark other than a starting mark, her penalty shall be a Two-Turns Penalty.' (US Appendix V1)
- 14.2 Appendix T, Post Race Penalty and Arbitration will apply as modified: 'Provided that rule 44.1(b) does not apply, the penalty is a boat's place made worse by 20% of the score for Did Not Finish, rounded upwards. This changes rules A5.1 and A5.2
- 14.3 The Scoring Penalty, rule 44.3(a)(b) will not apply. The POST-RACE PENALTIES, V2, is changed as provided in **Appendix A, US SAILING PRESCRIPTIONS.**

15 TIME LIMITS

- 15.1 If no boat has passed the weather mark within **30** minutes after the start, or if no boat sails the course and finishes within **120** minutes, the race shall be abandoned. This changes rules A5.1 and A5.2.
- 15.2 Boats failing to finish within **15** minutes after the first boat sails the course and finishes will be scored TLE. The score for TLE will be one point more than the last boat finishing within the time limit for the race. This changes rules 35, A5.1 and A5.2.

16 HEARING REQUESTS

- 16.1 Protests and requests for redress or reopening of hearings shall be delivered online to the event website on Yacht Scoring by logging into the owner's corner and filling out the online form. This changes rules 61.3 and 62.2.
- 16.2 The protest time limit shall be ninety (90) minutes after the finish of the last boat of the last race of the day and will be posted on the ONB on Yacht Scoring.
- 16.3 Notices will be posted on the ONB no later than 15 minutes after the protest time limit to inform competitors of hearings in which they are parties.
- 16.4 The protest desk will be located on the first floor of the BBYC clubhouse. Parties and their witnesses should report there at the scheduled hearing time

- 16.5 Within the protest time, the race committee will post on the ONB the bow numbers or sail numbers of boats disqualified or penalized in accordance with rule A5.1.
- 16.6 After a hearing, penalties for violation of rules other than those in Part 2 that do not specify a penalty shall be at the discretion of the jury and may be less than disqualification.
- 16.7 Submit scoring inquiries to the event website on Yacht Scoring.

17 SAFETY REGULATIONS

- 17.1 In the event of an emergency on the water, boats will immediately notify the race committee by hail or VHF in order to activate the emergency medical plan.
- 17.2 A boat that withdraws from the racing area for any reason will inform the race committee before departing by hail, VHF or if impracticable by notifying the race committee cell phone upon reaching shore.

18 HAUL OUT RESTRICTIONS

- 18.1 Boats shall be afloat no later than 09:00 on the first scheduled day of racing of each event, and shall not be hauled out until their final race, except with the written permission of the principal race officer or jury.

19 FURTHER INFORMATION

- 19.1 The Fleet 20 website www.etchellsfleet20.org will provide additional information.
- 19.2 Official notice board website at Yacht Scoring: https://yachtscoring.com/notice_board.cfm?eid=14749
- 19.3 For inquiries about the 2022 Etchells Biscayne Bay Series:
On the Water Race Committee Cell Phone: 361-816-9801
Regatta Chairman: Jeff Nehms – racing@etchellsfleet20.org
BBYC Boat Storage: Ezra Culver – racing@etchellsfleet20.org
Regatta Committee Chairman: Bruce Harper – wbruceharpjr@hotmail.com
Race Officer: Mark Foster - mfooster1053@gmail.com
Jury Chairman: Tom Rinda - mercofl@aol.com
BBYC Office: 305-858-6303 or gm@biscaynebayyachtclub.com

APPENDIX A:

US SAILING PRESCRIPTIONS

The following US Sailing Prescriptions shall apply

RRS 60.3.:

US Sailing Prescribes that: (b) request redress for a boat or call a hearing to consider redress;

RRS 67.

US Sailing prescribes that:

- (a) A boat that retires from a race or accepts a penalty does not, by that action alone, admit liability for damages.
- (b) A PC shall find facts and make decisions only in compliance with the rules. No PC or US Sailing appeal authority shall adjudicate any claim for damages. Such a claim is subject to the jurisdiction of the courts.
- (c) A basic purpose of the rules is to prevent contact between boats. By participating in an event governed by the rules, a boat agrees that responsibility for damages arising from any breach of the rules shall be based on fault as determined by application of the rules, and that she shall not be governed by the legal doctrine of 'assumption of risk' for monetary damages resulting from contact with other boats.

RRS 76.1.

US Sailing prescribes that an OA or RC shall not reject or cancel the entry of a boat or exclude a competitor eligible under the notice of race and sailing instructions for an arbitrary or capricious reason or for reason of race, color, religion, national origin, gender, sexual orientation, or age.

Appendix R: PROCEDURES FOR APPEALS AND REQUESTS

See rules 70 and 71. This appendix replaces Appendix R as adopted by World Sailing for the purpose of creating a two-level appeals system. The US Sailing Appeals Committee acts as the national authority under rule 71.

Frequently asked questions (FAQ) on the appeals system and their answers, including advice on how to prepare an appeal, can be found on the US Sailing website. Go to appeals.ussailing.org and click the 'Appeals FAQ' link.

Appendix V: ALTERNATIVE PENALTIES

V1 PENALTY AT THE TIME OF AN INCIDENT: The first two sentences of rule 44.1 are changed to:

'A boat may take a One-Turn Penalty when she may have broken one or more rules of Part 2 or rule 31 in an incident while racing. However, when she may have broken one or more rules of Part 2 while in the zone around a mark other than a starting mark, her penalty shall be a Two-Turns Penalty.

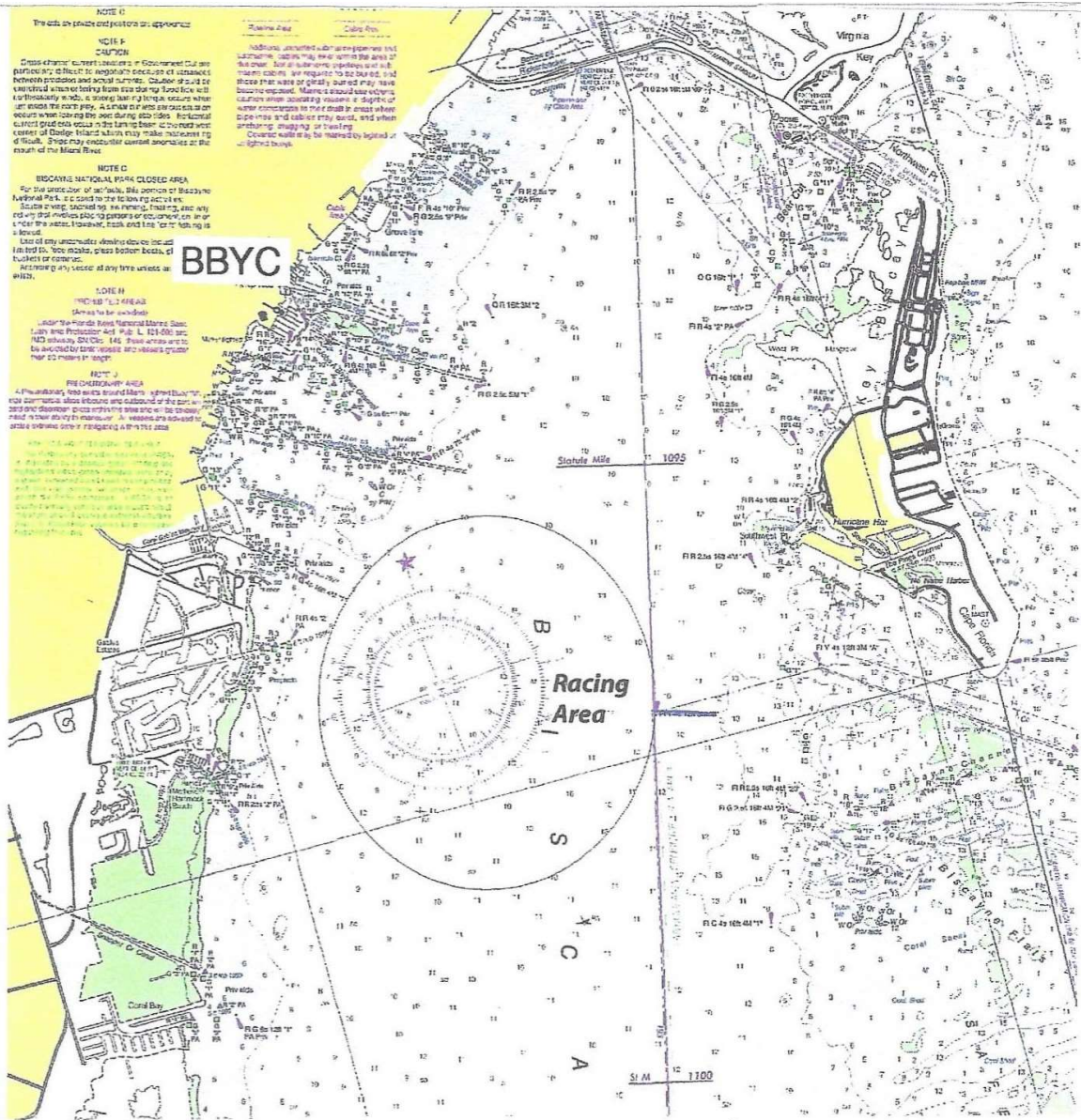
V2 PENALTY TAKEN AFTER A RACE: Appendix V2 is changed as follows:

(a) Provided that rule 44.1(b) does not apply, a boat that may have broken one or more rules of Part 2 or rule 31 in an incident may take a Post-Race Penalty at any time after the race until the beginning of a protest hearing involving the incident.

(b) A Post-race Penalty is a **20%** Scoring Penalty calculated as stated in rule 44.3(c). However, rule 44.1 applies.

(c) A boat takes a Post-Race Penalty by notifying the race committee after finishing of her intent and submits a statement to the Yachtscoring owner's corner that the boat accepts the penalty and identifies the race number and where and when the incident occurred.

APPENDIX B – RACING AREA

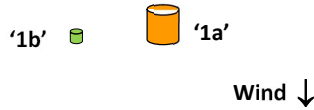


APPENDIX C - COURSES

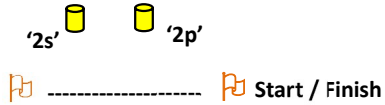
SI APPENDIX C – COURSES DIAGRAM

EXAMPLE : COURSE BOARD DISPLAYED ON R/C SIGNAL	VESSEL	4
Course #4 - Windward, Leeward, Windward, Leeward (finish)		120°
1a (vertical) + 1b (90° offset) at the weather mark, and leeward Gate.		1.2 nm
Weather mark (s) approx. 120° magnetic at 1.2 nm from the start .		

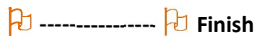
COURSE 4:



- Leg 1 – Windward (**1a + 1b** to port)
- Leg 2 – Leeward (gate)
- Leg 3 – Windward (**1a + 1b** to port)
- Leg 4 – Leeward (Finish)



COURSE 5:



- Leg 1 – Windward (**1a + 1b** to port)
- Leg 2 – Leeward (gate)
- Leg 3 – Windward (**1a + 1b** to port)
- Leg 4 – Leeward (gate)
- Leg 5 – Windward (Finish)

