



SAILING INSTRUCTIONS

Rumgatta Regatta

October 02, 2019

Organized by

Tampa Sailing Squadron, Apollo Beach, Florida

Spinnaker and Non-Spinnaker

1 RULES

The series will be governed by the rules as defined in *The Racing Rules of Sailing, 2021-2024*.

2 NOTICES TO COMPETITORS

Notices to competitors will be posted on the official notice board located by the flagpole at TSS.

3 CHANGES TO SAILING INSTRUCTIONS

3.1 Any change to the sailing instructions will be posted before 0800 on Friday, October 1, or communicated verbally on the water.

3.2 In case of the possibility of severe weather, all inquiries should be made to TSS at 813-645-8377.

4 SIGNALS MADE ASHORE

4.1 Signals made ashore will be displayed from the flagpole at TSS.

4.2 When flag AP is displayed ashore, '1 minute' is replaced by 'not less than 45 minutes'. This changes RRS Race Signal AP.

5 RACING AREAS

Racing areas will be on Hillsborough Bay near Apollo Beach.

6 CHECK-IN

All boats shall pass the stern of the Short Course race committee signal boat, on starboard tack, at least 10 minutes before the Warning Signal, and hail their boat name, sail number, and division or class. VHF check-in is not available.

NOTE: The Lima flag, "come within hail" will NOT be displayed for this purpose. If the Lima flag is displayed, it will be for a different message, such as a change in the Sailing Instructions.

7 RECALLS

7.1 When an individual recall is signaled, the race committee will attempt to hail boats that are OCS, either by voice or VHF channel 68. The timing and order, or omission, of such hails or the failure of a boat to hear a hail will not be considered an improper action or omission of the race committee under rule 62.1.

9 PROTESTS AND REQUESTS FOR REDRESS

9.1 In addition to the requirements of rule 61.1, a boat intending to protest shall inform the race committee upon finishing or retiring of its intention to protest.

9.2 Protest forms are available at TSS.

9.3 Protests and requests for redress shall be hand-delivered no later than One Hour after the Short Course RC Signal Boat docks, to either Principal Race Officer Henry Morse (863-838-1268) or Regatta Chair Paul Phillips (813-404-5517).

9.2 Parties and witnesses will be notified of the date, time, and place of the hearing.

10 SAFETY REGULATIONS

10.1 Any boat who challenges a vessel confined to the Tampa Bay shipping channels in such a way as to cause them to file a report, or who violates a moving or static safety or security zone resulting in the filing of a report, will be disqualified. This changes rule 63.1.

10.2 A competitor who intentionally puts trash in the water may be protested by other boats or the race committee.

11 RADIO COMMUNICATIONS

- 11.1 The race committee will monitor VHF channel 68.
- 11.2 A boat leaving the racing area before finishing shall notify the race committee signal vessel over VHF, hailing her name, sail number, and division or class, and receive acknowledgment from the race committee.
- 11.3 Except in an emergency, a boat shall neither make radio transmissions while racing nor receive radio communications not available to all boats. This restriction also applies to mobile telephones.

12 PRIZES

Prizes will be presented on Saturday evening. Final results will be posted after any protest hearings. The final results may affect the awarded prizes.

13 SCHEDULE OF RACES

- 13.1 The first **Start** is at 1100. (Warning Signal at 1055)
- 13.2 Three or more races are scheduled.

15 COURSES AND MARKS

- 15.1 The diagram below shows the course, and on which side to leave the marks.
- 15.2 The course is 4 legs: Start, short windward, long leeward, long windward, short leeward, Finish.
- 15.2 The starting pin will be an inflatable mark.

16 THE START

- 16.1 The starting line will be between a staff displaying an orange flag on the Short Course signal vessel at the starboard end, and the course side of the port end starting mark.
- 16.2 The starting line will be located within sight and generally westerly of the channel exiting TSS.
- 16.3 The Class Flags for this group are the #5 pennant for Spin, and the # 6 pennant for Non-Spin.

17 THE FINISH

The finish line will be between a staff displaying a blue flag on the Short Course signal vessel and the course side of the finishing mark.

18 TIME LIMIT

- 18.1 If no boat in a Class has passed the first mark within 60 minutes from the Start, the race will be abandoned.
- 18.2 The time limit for the first boat in a Class to sail the course and finish is 90 minutes.
- 18.3 Boats still racing more than 30 minutes after the first boat in their Class has finished, will be scored DNF. This changes RRS 35 and A5.

19 SCORING

- 19.1 PHRF time-on-distance will be used to calculate scores.

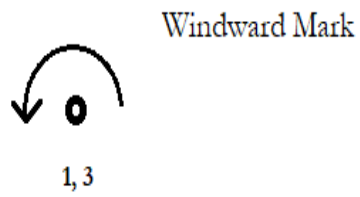
Number 5 pennant – Spin



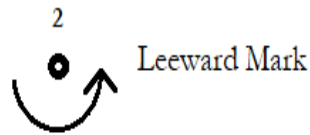
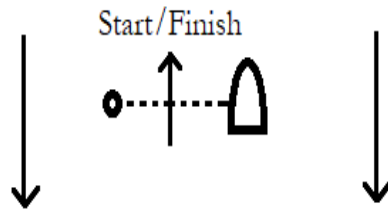
Number 6 pennant – Non-Spin



Note: RC vessel for the Short Course is a 30' +/- SAIL boat.



Course is Start, 1, 2, 3, Finish.
The Start/Finish line is open on legs 1-2 and 2-3, (an open gate) meaning boats may sail through it or around it on either side.
Leave all marks to port, except the Finish line pin when finishing, which is then left to starboard.





SAILING INSTRUCTIONS

Rumgatta Regatta

October 02, 2021

Organized by

Tampa Sailing Squadron, Apollo Beach, Florida

RACER CRUISER & DOUBLEHAND

1 RULES

The series will be governed by the rules as defined in *The Racing Rules of Sailing, 2021-2024*.

2 NOTICES TO COMPETITORS

Notices to competitors will be posted on the official notice board located by the flagpole at TSS.

3 CHANGES TO SAILING INSTRUCTIONS

- 3.1 Any change to the sailing instructions will be posted before 0800 on Friday, October 1, or communicated verbally on the water.
- 3.2 In case of the possibility of severe weather, all inquiries should be made to TSS at 813-645-8377.

4 SIGNALS MADE ASHORE

- 4.1 Signals made ashore will be displayed from the flagpole at TSS.
- 4.2 When flag AP is displayed ashore, '1 minute' is replaced by 'not less than 45 minutes'. This changes RRS Race Signal AP.

5 RACING AREAS

Racing areas will be on Hillsborough Bay near Apollo Beach.

6 CHECK-IN

[DP] All boats shall pass the stern of the Long Course race committee signal boat, on starboard tack, at least 15 minutes before the start at 1000, and hail their boat name, sail number, and division or class. VHF check-in will not be permitted.

NOTE: The Lima flag, "come within hail" will NOT be displayed for this purpose. If the Lima flag is displayed, it will be for a different message, such as a change in the Sailing Instructions.

7 RECALLS

- 7.1 When an individual recall is signaled, the race committee will attempt to hail boats that are OCS. The timing and order, or omission, of such hails or the failure of a boat to hear a hail will not be considered an improper action or omission of the race committee under rule 62.1. Hailing may be by voice or VHF channel 68.

8 PENALTY SYSTEM

- 8.1 In all classes the Scoring Penalty of rule 44.3 will replace all Turns Penalties. To accept a Scoring Penalty, a boat must promptly display a yellow flag, and call the race committee's attention to it upon finishing.

9 PROTESTS AND REQUESTS FOR REDRESS

- 9.1 In addition to the requirements of rule 61.1, a boat intending to protest shall inform the race committee upon finishing or retiring of its intention to protest.
- 9.2 Protest forms are available at TSS.
- 9.3 Protests and requests for redress shall be hand-delivered no later than One Hour after the RC Signal Boat docks, to either Principal Race Officer Henry Morse (863-838-1268) or Regatta Chair Paul Phillips (813-404-5517).
- 9.2 Parties and witnesses will be notified of the date, time, and place of the hearing.

10 SAFETY REGULATIONS

- 10.1 Any boat that challenges a vessel confined to the Tampa Bay shipping channels in such a way as to cause them to file a report, or that violates a moving or static safety or security zone resulting in the filing of a report, will be disqualified. This changes rule 63.1.
- 10.2 A competitor who intentionally puts trash in the water may be protested by other boats or the race committee.

11 RADIO COMMUNICATIONS

- 11.1 The race committee will monitor VHF channel 68.
- 11.2 A boat leaving the racing area before finishing shall notify the race committee signal vessel over VHF, hailing her name, sail number, and division or class, and receive acknowledgment from the race committee.
- 11.3 Except in an emergency, a boat shall neither make radio transmissions while racing nor receive radio communications not available to all boats. This restriction also applies to cell phones, including voice or data.

12 PRIZES

Prizes will be presented on Saturday evening. Final results will be posted after any protest hearings. The final results may affect the awarded prizes.

13 SCHEDULE OF RACES

- 13.1 The baseline starting time will be 1000.
- 13.2 One race is scheduled.

14 (not used)

15 COURSES AND MARKS

- 15.1 The diagrams in the attachment show the courses, including the approximate angles between legs, the order in which marks are to be passed, and side on which each mark is to be left, with one exception.
- 15.2 Exception: TSS mark “x”, the first mark after the start, shall be a gate mark, with an accompanying mark nearby and boats required to sail through the gate.
- 15.3 The course to be sailed will be announced at the competitors meeting, posted on the notice board and displayed at the stern of the signals vessel.
- 15.4 The starting mark will be an inflatable mark.

16 THE START

- 16.1 This is a standard, 5-minute flag start. The two classes may be started together or separately.
- 16.2 The starting line will be between a staff displaying an orange flag on the Long Course signals vessel at the starboard end, and the course side of the port end starting mark.

16.3 The starting line will be located 0.25 nm directly downwind of TSS mark “x”. That means it will be somewhere on the dashed circle shown on the courses (attached) around mark “x”, in whatever location on that circle that makes it directly downwind of mark “x”.

- 16.4 The Class Flags for these Classes are the #3 pennant for Racer Cruiser and #4 for Doublehand.
- 16.5 Flags and horns will signal the standard 5-minute countdown to the start time of 1000.

17 THE FINISH

The finish line will be between a staff displaying a blue flag on the Long Course signals vessel and the course side of the finishing mark, which is the last mark of the course, and shall be left to starboard.

18 TIME LIMIT

- 18.1 The time limit for all boats to sail the course and finish is 1700.
- 18.3 Boats still racing after 1700 will be scored DNF. This changes rules 35 and A5.

19 SCORING

- 19.1 PHRF time-on-distance will be used to calculate individual starting times.
- 19.2 Unless the course is shortened, each boat’s score will be the order she finishes.
- 19.3 If the course is shortened, corrected finish times and order will be calculated using the shortened course length.

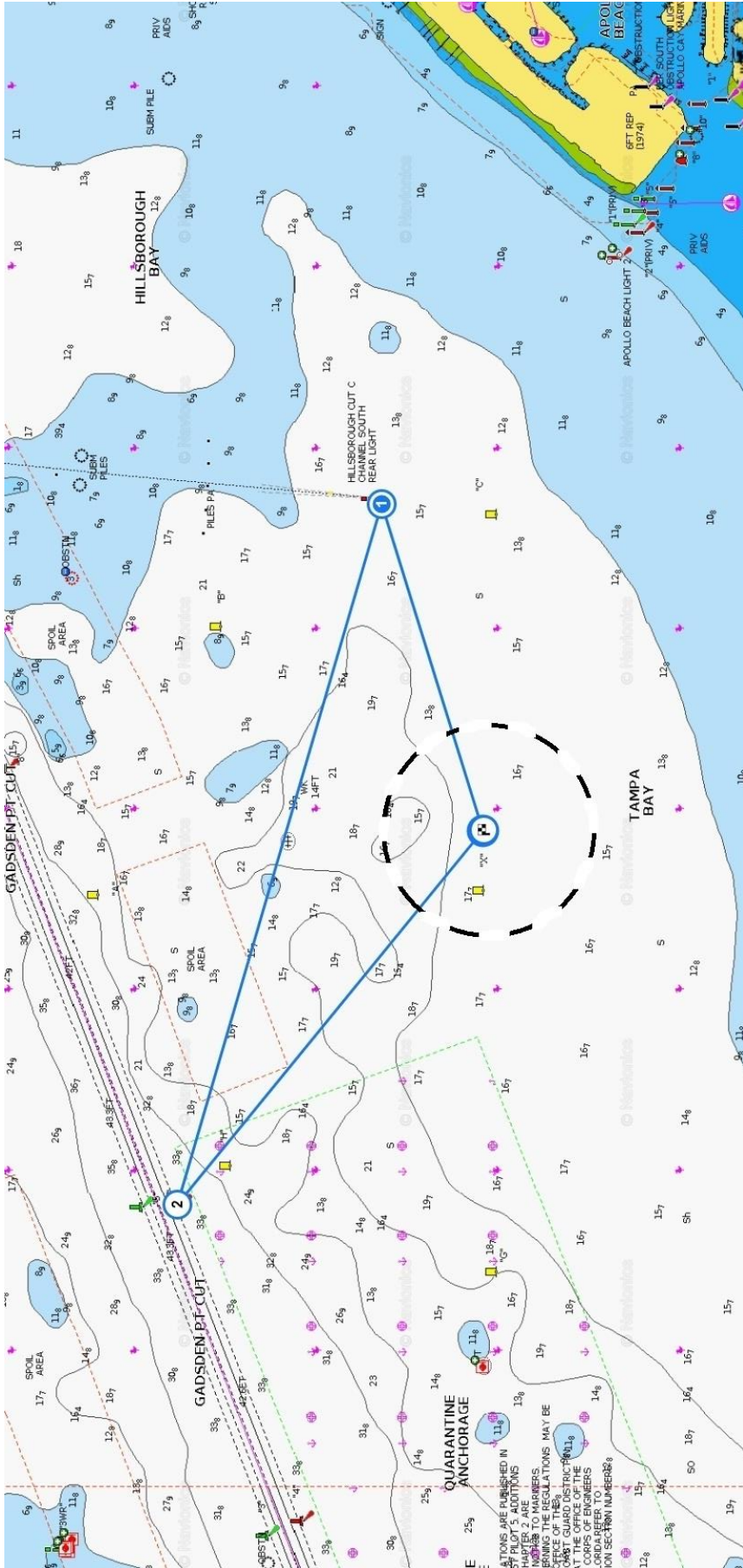
Number 3 pennant – Class Flag for Racer Cruiser:



Number 4 Pennant – Class Flag for Doublehand:



Note: The RC vessel for the long course is a 30’ CABIN CRUISER.



Course A

Total Course: 4.45 nm.

[Start] RC boat and Starting Pin located on dashed circle 0.25 nm downwind of Checkered Flag.
 [Checkered Flag] TSS "x" Mark [27.782223, -82.470332], (27° 46' 56", -82° 28' 13"). First Mark after Start.
 Due windward of Starting Line. Gate mark. Sail through

Leg: 0.25 nm.

Leg: 1.1 nm.

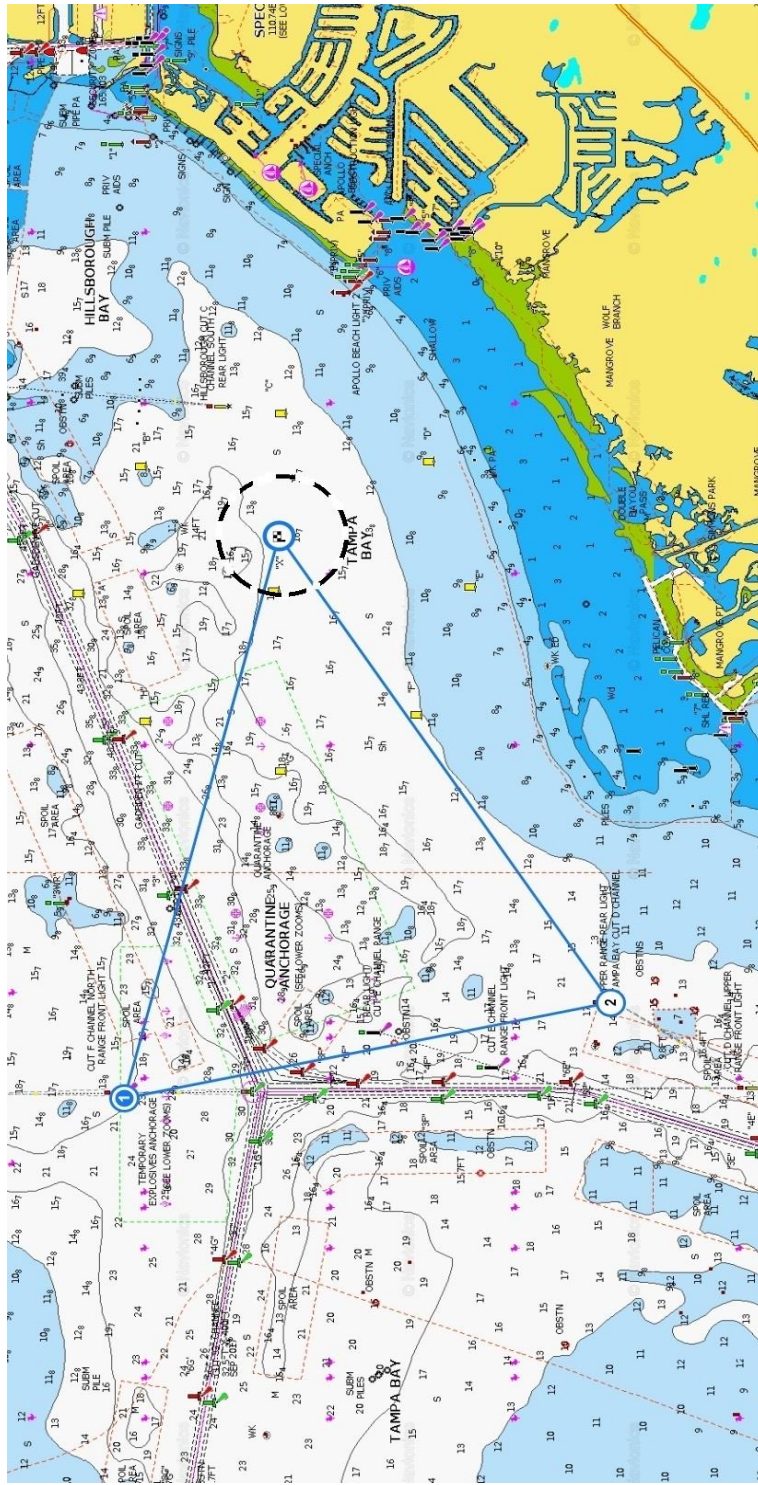
Leg: 1.9 nm.

Leg: 1.2 nm.

[1] Range Tower - Cut "C", southbound, rear tower [27.786606, -82.450836], (27° 47' 12", -82° 28' 13"). Leave to Port.

[2] Chnl Marker - Gadsden Pt. #6, red, flshg, 4 secs [27.795524, -82.485984], (27° 47' 44", -82° 29' 10"). Leave to Port.

[Checkered Flag] TSS "x" Mark [27.782223, -82.470332], (27° 46' 56", -82° 28' 13"). Finish line.



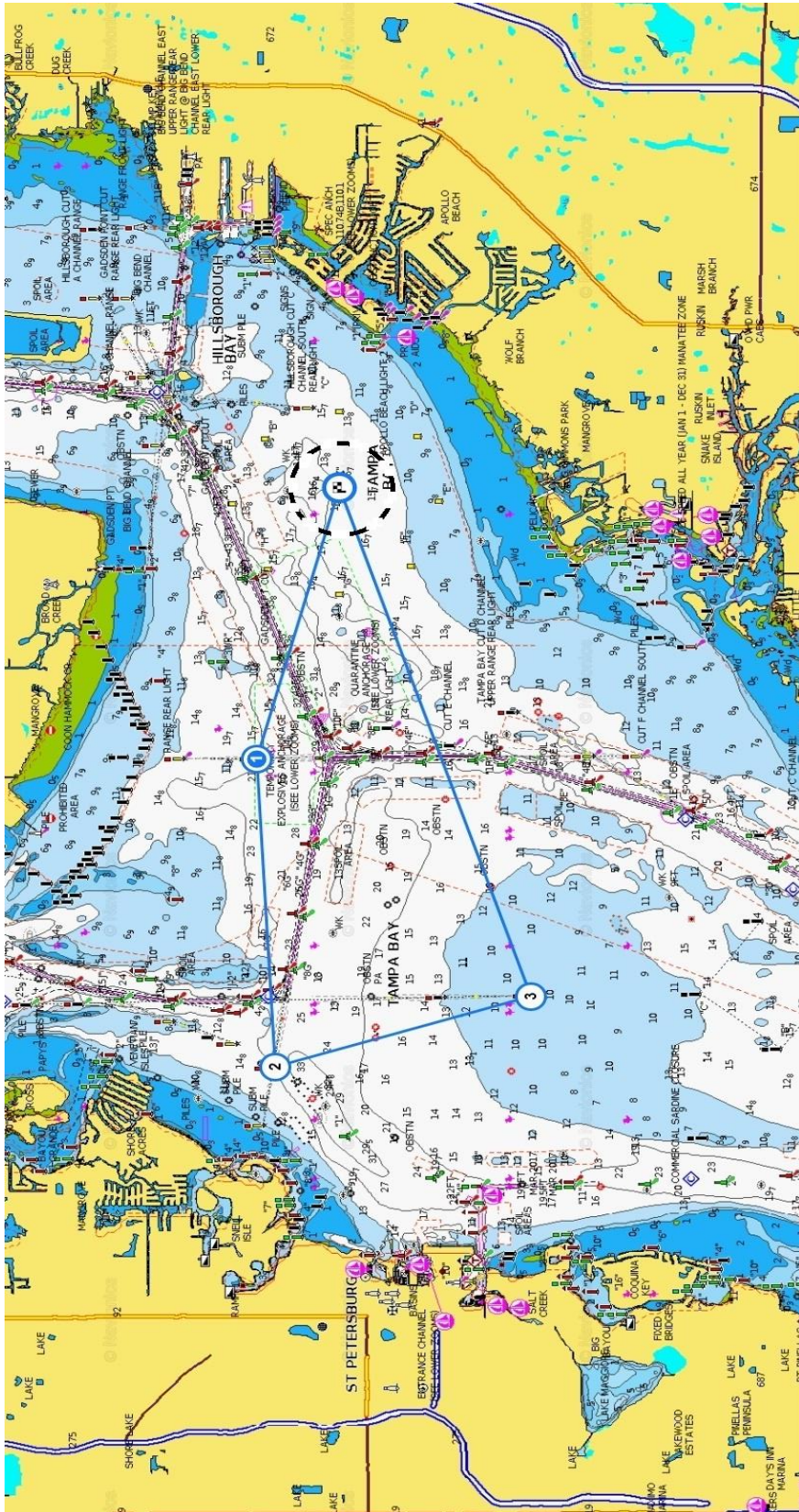
Course B

Total Course: 8.65 nm.

- Leg: 0.25 nm.
- Leg: 2.9 nm.
- Leg: 2.6 nm.
- Leg: 2.9 nm.

[Start] RC boat and Starting Pin located on dashed circle 0.25 nm downwind of Checkered Flag.
 [Checkered Flag] TSS "x" Mark (27.782223, -82.470332) First Mark after Start. Due windward of Starting Line.

- Leave Mark to Port if RC displays red shape, or Stbd if green.
- [1] Range Tower – Cut "F", northbound, front tower (27.795491, -82.523182). Leave to Port.
- [2] Range Tower – Cut "D", northbound, rear tower (27.753358, -82.513617). Leave to Port.
- [Checkered Flag] TSS "x" Mark (27.782223, -82.470332). Finish line.



Total Course: 14.95 nm.

[Start] RC boat and Starting Pin located on dashed circle 0.25 nm downwind of Checkered Flag.

[Checked Flag] ISS "x" Mark [27.782223, -82.470332], (27° 46' 56", -82° 28' 13"). First Mark after Start.

Due windward of Starting Line. Gate mark. Sail through.

[1] Range Tower – Cut "F", NB, front tower [27.795491, -82.523182], (27° 47' 44", -82° 31' 23"). Leave to Port.

[2] Range Tower – Cut "C", WB, front tower [27.793006, -82.587142], (27° 47' 35", -82° 35' 14"). Leave to Port.

[3] Range Tower – Cut "J", SB, rear tower [27.750832, -82.572132], (27° 45' 03", -82° 34' 20"). Leave to Port.

[Checked Flag] ISS "x" Mark [27.782223, -82.470332], (27° 46' 56", -82° 28' 13"). Finish Line.

Leg: 0.25 nm.

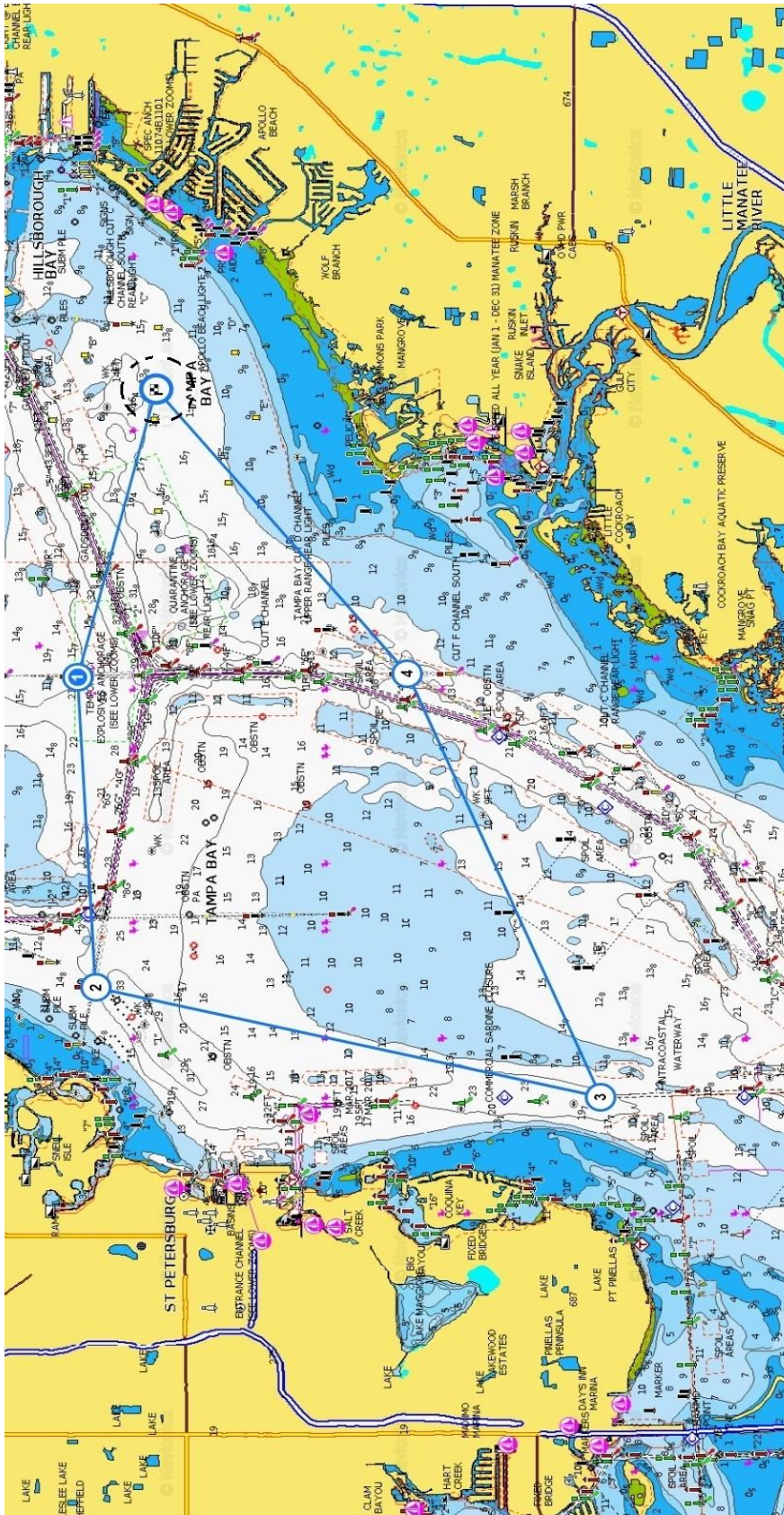
Leg: 2.9 nm.

Leg: 3.4 nm.

Leg: 2.7 nm.

Leg: 5.7 nm.

Course C

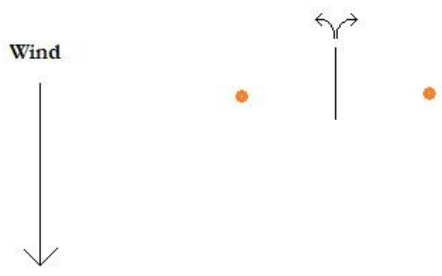


Total Course: 20.75 nm.

- [Start] RC boat and Starting Pin located on dashed circle 0.25 nm downwind of Checkered Flag.
- [Checked Flag] TSS "x" Mark [27.782223, -82.470332], (27° 46' 56", -82° 28' 13"). First Mark after Start.
- Due windward of Starting Line. Gate mark. Sail through.
- [1] Range Tower - Cut "F", NB, front tower [27.795491, -82.523182], (27° 47' 44", -82° 31' 23"). Leave to Port.
- [2] Range Tower - Cut "G", WB, front tower [27.793006, -82.587142], (27° 47' 35", -82° 35' 14"). Leave to Port.
- [3] Chnl Mkr - Pt. Pinellas, #6, red, fishing, 4 sees, [27.708368, -82.609451], (27° 42' 30", -82° 36' 34"). Leave to Port.
- [4] Range Tower - Cut "F", SB, front tower [27.740905, -82.522683], (27° 44' 27", -82° 31' 22"). Leave to Port.
- [Checked Flag] TSS "x" Mark [27.782223, -82.470332], (27° 46' 56", -82° 28' 13"). Finish line.

- Leg: 0.25 nm.
- Leg: 2.9 nm.
- Leg: 3.4 nm.
- Leg: 5.2 nm.
- Leg: 5.0 nm.
- Leg: 4.0 nm.

Course D



The first mark, the windward mark, is a gate. It is formed by the TSS "X" buoy and a nearby orange inflatable mark. Sail through the gate and then on to the next mark.

The reason for this is that depending on wind direction and course selection, the next mark may be to port of this mark, to starboard, or straight ahead or astern. That means the RC would have to indicate, on the fly, whether to leave this mark to port or to starboard. With a gate, the course and SI are now independent of wind direction and it works no matter where the next mark is, and no need to "leave it to port" or "leave it to starboard." Instead, just sail through the gate.





SAILING INSTRUCTIONS

Rumgatta Regatta

October 02, 2021

Organized by

Tampa Sailing Squadron, Apollo Beach, Florida

CRUISER CLASS AND MOTHER LODGE

1 RULES

The series will be governed by the rules as defined in *The Racing Rules of Sailing, 2021-2024*.

2 NOTICES TO COMPETITORS

Notices to competitors will be posted on the official notice board located by the flagpole at TSS.

3 CHANGES TO SAILING INSTRUCTIONS

- 3.1 Any change to the sailing instructions will be posted before 0800 on Friday, October 1, or communicated verbally on the water.
- 3.2 In case of the possibility of severe weather, all inquiries should be made to TSS at 813-645-8377.

4 SIGNALS MADE ASHORE

- 4.1 Signals made ashore will be displayed from the flagpole at TSS.
- 4.2 When flag AP is displayed ashore, '1 minute' is replaced by 'not less than 45 minutes'. This changes RRS Race Signal AP.

5 RACING AREAS

Racing areas will be on Hillsborough Bay near Apollo Beach.

6 CHECK-IN

All boats shall pass the stern of the Long Course race committee signal boat, on starboard tack, at least 10 minutes before their time to start, and hail their boat name, sail number, and division or class. VHF check-in will not be permitted, except for boats scheduled to start more than 25 minutes after the pursuit baseline starting time (1100).

NOTE: The Lima flag, "come within hail" will NOT be displayed for this purpose. If the Lima flag is displayed, it will be for a different message, such as a change in the Sailing Instructions.

7 RECALLS

- 7.1 When an individual recall is signaled, the race committee will attempt to hail boats that are OCS. The timing and order, or omission, of such hails or the failure of a boat to hear a hail will not be considered an improper action or omission of the race committee under rule 62.1.

8 PENALTY SYSTEM

- 8.1 In all classes the Scoring Penalty of rule 44.3 will replace all Turns Penalties. To accept a Scoring Penalty, a boat must promptly display a yellow flag, and call the race committee's attention to it upon finishing.

9 PROTESTS AND REQUESTS FOR REDRESS

- 9.1 In addition to the requirements of rule 61.1, a boat intending to protest shall inform the race committee upon finishing or retiring of its intention to protest.
- 9.2 Protest forms are available at TSS.
- 9.3 Protests and requests for redress shall be hand-delivered no later than One Hour after the RC Signal Boat docks, to either Principal Race Officer Henry Morse (863-838-1268) or Regatta Chair Paul Phillips (813-404-5517).
- 9.2 Parties and witnesses will be notified of the date, time, and place of the hearing.

10 SAFETY REGULATIONS

- 10.1 Any boat that challenges a vessel confined to the Tampa Bay shipping channels in such a way as to cause them to file a report, or that violates a moving or static safety or security zone resulting in the filing of a report, will be disqualified. This changes rule 63.1.
- 10.2 A competitor who intentionally puts trash in the water may be protested by other boats or the race committee.

11 RADIO COMMUNICATIONS

- 11.1 The race committee will monitor VHF channel 68.
- 11.2 A boat leaving the racing area before finishing shall notify the race committee signal vessel over VHF, hailing her name, sail number, and division or class, and receive acknowledgment from the race committee.
- 11.3 Except in an emergency, a boat shall neither make radio transmissions while racing nor receive radio communications not available to all boats. This restriction also applies to cell phones, including voice or data.

12 PRIZES

Prizes will be presented on Saturday evening. Final results will be posted after any protest hearings. The final results may affect the awarded prizes.

13 SCHEDULE OF RACES

- 13.1 The baseline starting time will be 1100.
- 13.2 One race is scheduled.

14 (not used)

15 COURSES AND MARKS

- 15.1 The diagrams in the attachment show the courses, including the approximate angles between legs, the order in which marks are to be passed, and side on which each mark is to be left, with one exception.
- 15.2 Exception: TSS mark “x”, the first mark after the start, shall be a gate mark, with boats required to sail through the gate. See attached diagram.
- 15.3 The course to be sailed will be announced at the competitors meeting, posted on the notice board and displayed at the stern of the signals vessel.
- 15.4 The starting mark will be an inflatable mark.

16 THE START

- 16.1 The individual GPS starting times for all boats will be distributed at the competitors meeting and posted on the notice board.
- 16.2 The starting line will be between a staff displaying an orange flag on the Long Course signals vessel at the starboard end, and the course side of the port end starting mark.

16.3 The starting line will be located 0.25 nm directly downwind of TSS mark “x”. That means it will be somewhere on the dashed circle shown on the courses (attached) around mark “x”, in whatever location on that circle that makes it directly downwind of mark “x”.

16.4 The Class Flags for these Classes are the #1 pennant for Mother Load and #2 for Cruiser.

16.5 Flags and horns will signal the standard 5-minute countdown to the pursuit start baseline time of 1100.

17 THE FINISH

The finish line will be between a staff displaying a blue flag on the Long Course signals vessel and the course side of the finishing mark, which is the last mark of the course, and shall be left to starboard.

18 TIME LIMIT

- 18.1 The time limit for all boats to sail the course and finish is 1700.
- 18.3 Boats still racing after 1700 will be scored DNF. This changes rules 35 and A5.

19 SCORING

- 19.1 PHRF time-on-distance will be used to calculate individual starting times.
- 19.2 Unless the course is shortened, each boat’s score will be the order she finishes.
- 19.3 If the course is shortened, corrected finish times and order will be calculated using the shortened course length.

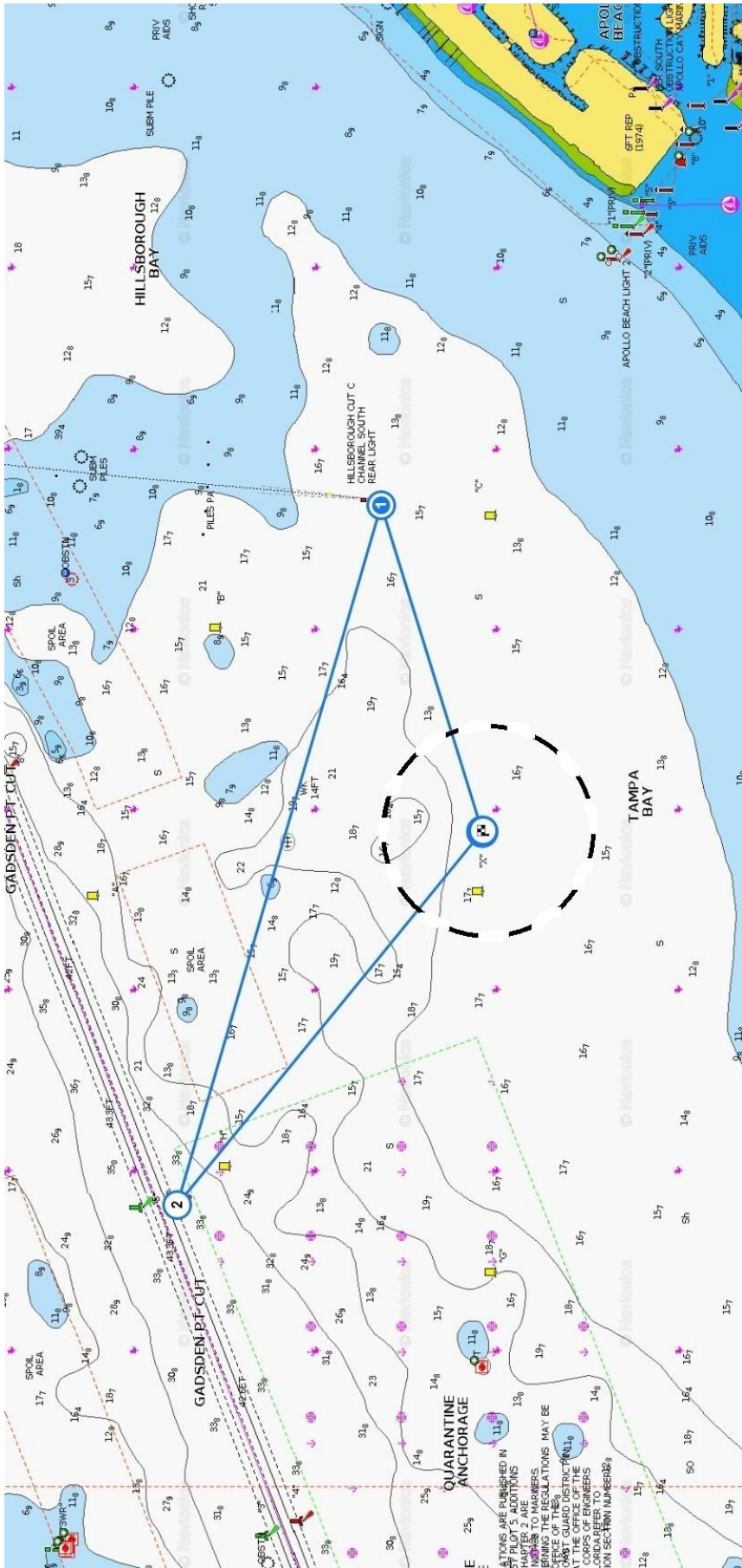
Number 1 pennant – Class Flag for Mother Load:



Number 2 Pennant – Class Flag for Cruiser:



Note: The RC vessel for the long course is a CABIN CRUISER.



Course A

Total Course: 4.45 nm.

[Start] RC boat and Starting Pin located on dashed circle 0.25 nm downwind of Checkered Flag.
 [Checkered Flag] TSS "x" Mark [27.782223, -82.470332], (27° 46' 56", -82° 28' 13"). First Mark after Start.
 Due windward of Starting Line. Gate mark. Sail through

Leg: 0.25 nm.

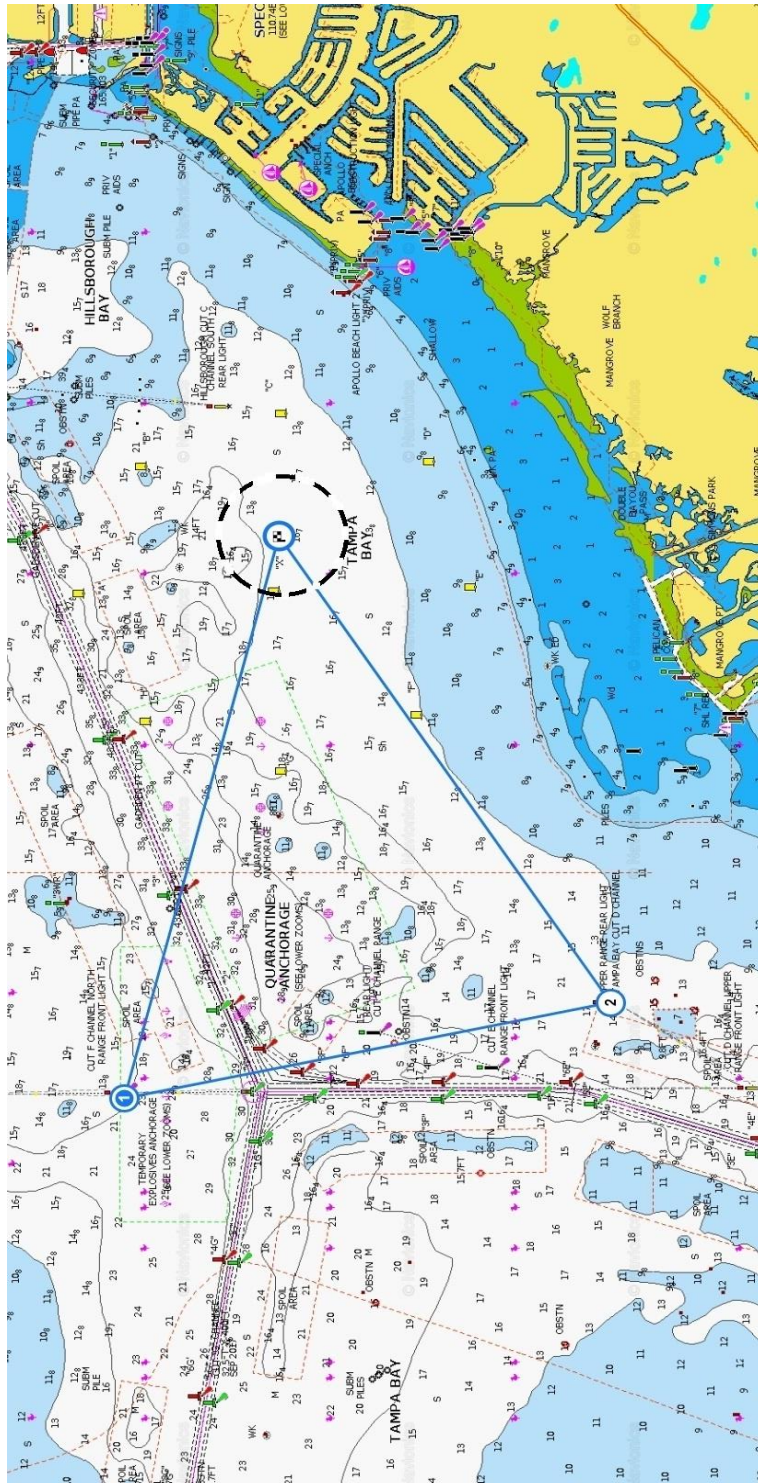
[1] Range Tower - Cut "C", southbound, rear tower [27.786606, -82.450836], (27° 47' 12", -82° 28' 13"). Leave to Port.

Leg: 1.1 nm.

[2] Chnl Marker - Gadsden Pt. #6, red, flshg, 4 secs [27.795524, -82.485984], (27° 47' 44", -82° 29' 10"). Leave to Port.

Leg: 1.9 nm.

[Checkered Flag] TSS "x" Mark [27.782223, -82.470332], (27° 46' 56", -82° 28' 13"). Finish line.



Total Course: 8.65 nm.

[Start] RC boat and Starting Pin located on dashed circle 0.25 nm downwind of Checkered Flag.
 [Checkered Flag] TSS "x" Mark (27.782223, -82.470332) First Mark after Start. Due windward of Starting Line.

Leave Mark to Port if RC displays red shape, or Stbd if green.

[1] Range Tower - Cut "F", northbound, front tower (27.795491, -82.523182). Leave to Port.

[2] Range Tower - Cut "D", northbound, rear tower (27.753358, -82.513617). Leave to Port.

[Checkered Flag] TSS "x" Mark (27.782223, -82.470332). Finish line.

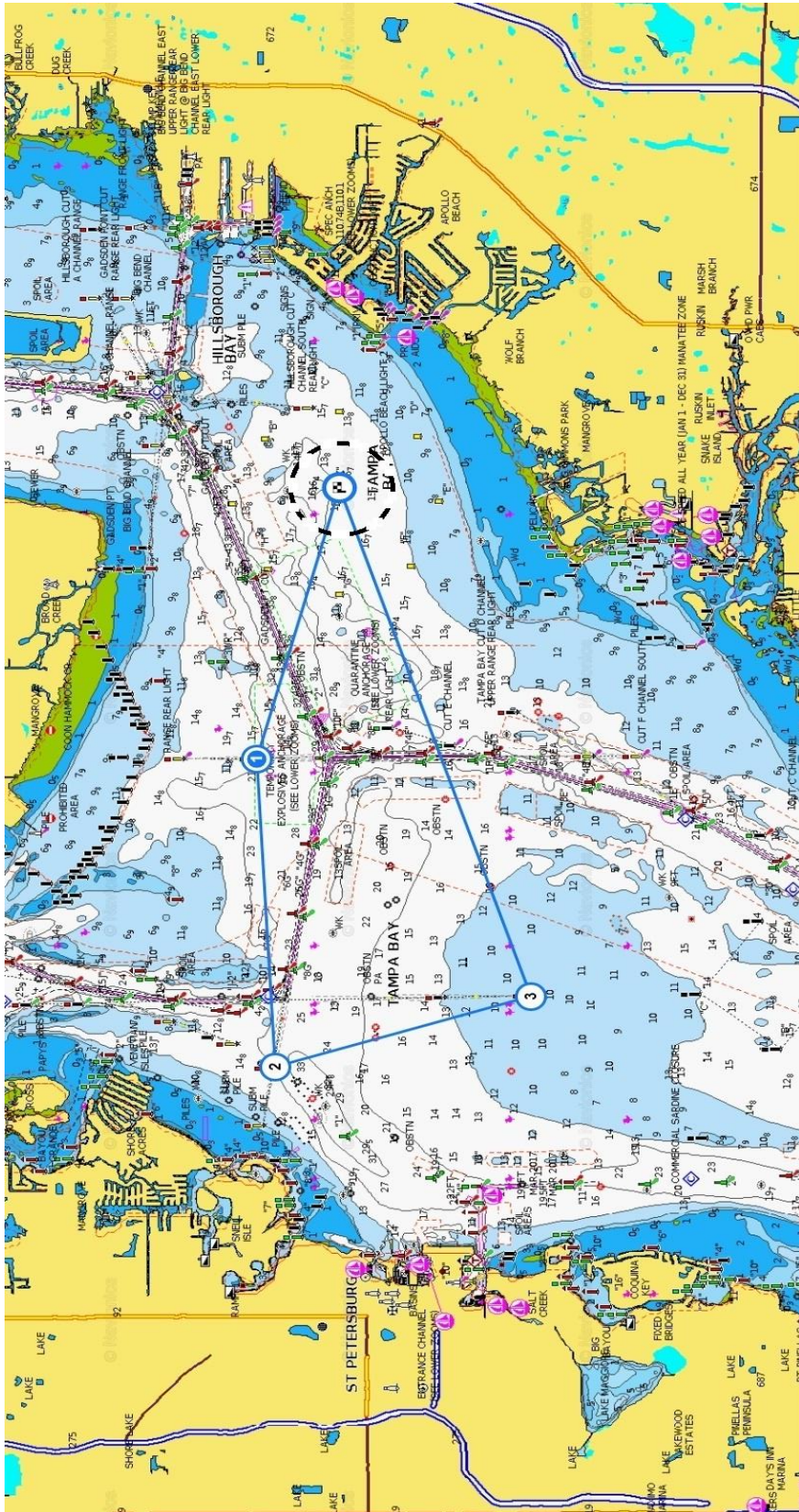
Leg: 0.25 nm.

Leg: 2.9 nm.

Leg: 2.6 nm.

Leg: 2.9 nm.

Course B



Total Course: 14.95 nm.

[Start] RC boat and Starting Pin located on dashed circle 0.25 nm downwind of Checkered Flag.

[Checked Flag] ISS "x" Mark [27.782223, -82.470332], (27° 46' 56", -82° 28' 13"). First Mark after Start.

Due windward of Starting Line. Gate mark. Sail through.

[1] Range Tower – Cut "F", NB, front tower [27.795491, -82.523182], (27° 47' 44", -82° 31' 23"). Leave to Port.

[2] Range Tower – Cut "C", WB, front tower [27.793006, -82.587142], (27° 47' 35", -82° 35' 14"). Leave to Port.

[3] Range Tower – Cut "J", SB, rear tower [27.750832, -82.572132], (27° 45' 03", -82° 34' 20"). Leave to Port.

[Checked Flag] ISS "x" Mark [27.782223, -82.470332], (27° 46' 56", -82° 28' 13"). Finish Line.

Leg: 0.25 nm.

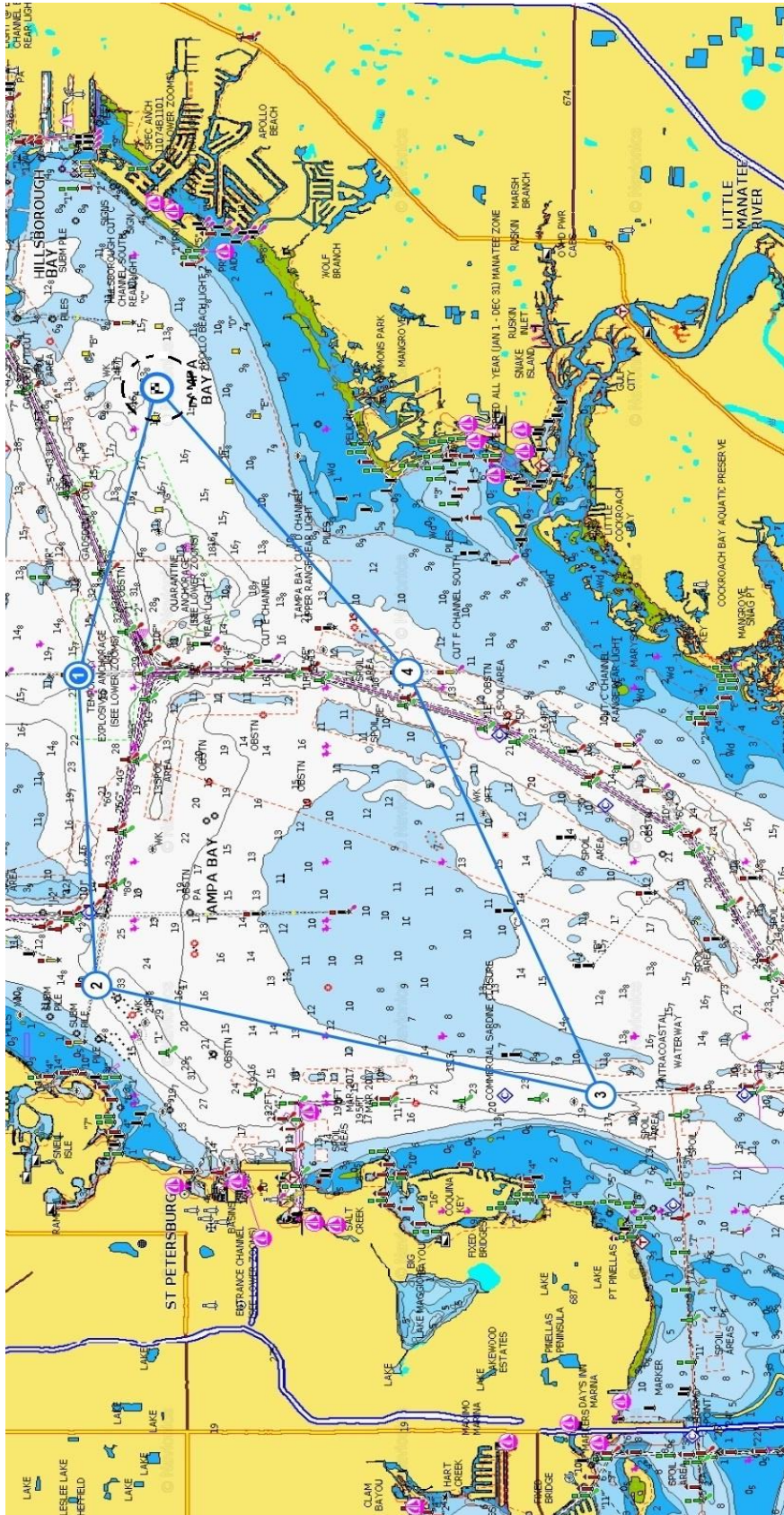
Leg: 2.9 nm.

Leg: 3.4 nm.

Leg: 2.7 nm.

Leg: 5.7 nm.

Course C

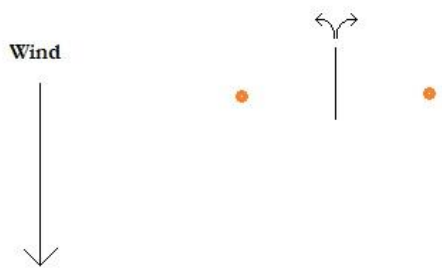


Course D

Total Course: 20.75 nm.

- [Start] RC Boat and Starting Pin located on dashed circle 0.25 nm downwind of Checkered Flag.
- [Checked Flag] TSS "x" Mark [27.782223, -82.470332], (27° 46' 56", -82° 28' 13"). First Mark after Start. Due windward of Starting Line. Gate mark. Sail through.
- [1] Range Tower – Cut "F", NB, front tower [27.795491, -82.523182], (27° 47' 44", -82° 31' 23"). Leave to Port.
- [2] Range Tower – Cut "G", WB, front tower [27.793006, -82.587142], (27° 47' 35", -82° 35' 14"). Leave to Port.
- [3] Chnl Mkr – Pt. Pinellas #6, red, fishing, 4 secs, [27.708368, -82.609451], (27° 42' 30", -82° 36' 34"). Leave to Port.
- [4] Range Tower – Cut "F", SB, front tower [27.740905, -82.522683], (27° 44' 27", -82° 31' 22"). Leave to Port.
- [Checked Flag] TSS "x" Mark [27.782223, -82.470332], (27° 46' 56", -82° 28' 13"). Finish line.

- Leg: 0.25 nm.
- Leg: 2.9 nm.
- Leg: 3.4 nm.
- Leg: 5.2 nm.
- Leg: 5.0 nm.
- Leg: 4.0 nm.



The first mark, the windward mark, is a gate. It is formed by the TSS "X" buoy and a nearby orange inflatable mark. Sail through the gate and then on to the next mark.

The reason for this is that depending on wind direction and course selection, the next mark may be to port of this mark, to starboard, or straight ahead or astern. That means the RC would have to indicate, on the fly, whether to leave this mark to port or to starboard. With a gate, the course and SI are now independent of wind direction and it works no matter where the next mark is, and no need to "leave it to port" or "leave it to starboard." Instead, just sail through the gate.

