



# 2022 SONAR WORLD CHAMPIONSHIP

June 14 – 19, 2022

LAKE SUNAPEE CRUISING FLEET  
LAKE SUNAPEE YACHT CLUB

SUNAPEE, NH USA



## SAILING INSTRUCTIONS

The Organizing Authority is the Sonar Class Association, and the regatta is sponsored by the Lake Sunapee Cruising Fleet (LSCF) and hosted at the Lake Sunapee Yacht Club (LSYC).

The notation [NP] in a rule in the SIs means it shall not be grounds for protest by a boat. This change is added to RRS 60.1(a).

### 1 RULES

- 1.1 The regatta will be governed by the rules as defined in *The Racing Rules of Sailing*.
- 1.2 Only the prescriptions of US Sailing to *The Racing Rules of Sailing* listed in Attachment A shall apply.
- 1.3 Lake Sunapee Yacht Club and Lake Sunapee Cruising Fleet protocols and rules will be posted on the Official Notice Board and on the [Event Website](https://yachtscoring.com/emenu.cfm?eID=14790) (<https://yachtscoring.com/emenu.cfm?eID=14790>) and be Rules of the Event.
- 1.4 [DP] Bow numbers will be assigned and shall be displayed on both sides of the bow approximately 50-150 mm below deck level and with the forward most point within 200mm of the bow. Bow numbers will be in the Skipper's Package at registration.
- 1.5 The regatta is a Sonar Class Association sanctioned event.

### 2 CHANGES TO SAILING INSTRUCTIONS

- 2.1 Any change to the Sailing Instructions will be posted before 0900 on the day it will take effect, except that any change to the schedule of races will be posted by 2000 on the day before it will take effect.

### 3 COMMUNICATION

- 3.1 Notices to competitors will be posted on the Official Notice Board, located near the head of the stairs at LSYC. The OA intends to post notices online at the [Event Website](https://yachtscoring.com/emenu.cfm?eID=14790), failure to do so will not be grounds for redress. This changes RRS 62.1.
- 3.2 On the water, the RC will use VHF radio, Channel 72 to monitor and communicate with the fleet, including the location of the starting area, countdown to the start, OCS sail or bow numbers, General Recalls and Postponements. Failure to make these broadcasts or failure to include a bow#/sail# or failure to hear them shall not be grounds for granting redress unless initiated by the Race Committee. This changes RRS 62.1.

- 
- 3.3** [DP] Except in an emergency, a boat shall not make voice or data transmissions and shall not receive voice or data communication that is not available to all boats.

## **4 CODE OF CONDUCT**

- 4.1** [DP] Competitors and Support Persons shall comply with reasonable requests from Race Officials.

## **5 SIGNALS MADE ASHORE**

- 5.1** Signals made ashore will be displayed on the flagpole at the south end of the patio at LSYC and posted on the [Event Website](#). Failure to post on the Website will not be grounds for redress.
- 5.2** When AP is signaled ashore, “1 minute” is replaced with “not less than 60 minutes” in Race Signals AP.

## **6 SCHEDULE**

### **6.1**

#### ***Tuesday, June 14***

1300-1700 Registration & Check-In  
1300-1700 Measurement & Inspection

#### ***Wednesday, June 15***

0900-1500 Late Check-In, Registration, Measurement & Inspection  
1500 Practice Race Warning Signal  
1800 All boats in the water  
1800 Competitor’s Meeting  
1800 Welcome / Opening Reception

#### ***Thursday, June 16***

0830 Competitor’s Briefing  
1000 First Warning Signal  
After racing Daily Awards & Cookout

#### ***Friday, June 17***

0830 Competitor’s Briefing  
1000 First Warning Signal  
After racing Daily Awards & Party

#### ***Saturday, June 18***

0830 Competitor’s Briefing  
1000 First Warning Signal  
1830-1915 Sonar Fleet Annual General Meeting  
1930 Dinner & Entertainment

#### ***Sunday, June 19***

0800 Competitor’s Briefing  
0930 First Warning Signal  
1400 No warning signals after 1400 (unless required to constitute a series).  
After racing Awards

- 6.2** A maximum of twelve (12) races may be sailed, however no more than four (4) races may be sailed on any race day.

## **7 CLASS FLAG**

- 7.1** The Class Flag will be a white flag with a Sonar Class symbol.

## **8 RACING AREA**

- 8.1** The location of the racing area is Lake Sunapee which supports 2 separate sailing areas as shown on Attachment B. Sailing Area 1 is south of Loon Island and north of Great Island. Sailing Area 2 is north of Loon Island and south of Herrick Cover. The location will be announced at each morning's Competitor's Meeting and displayed in accordance with SI 3.1.

## **9 COURSES**

- 9.1** The courses will be in a Windward – Leeward configuration, with a minimum of four legs, and may utilize a leeward gate and/or a windward offset mark. See Attachment C.
- 9.2** No later than the warning signal, the Race Committee signal vessel will display the course and the approximate compass bearing and distance of the first leg.
- 9.3** The leeward gate will be set approximately 0.1 nautical miles to windward of the starting line. If only a single mark is laid it shall be left to port.

## **10 MARKS**

- 10.1** Marks of the course will be orange inflatable buoys.
- 10.2** The starting marks will be the RC signal boat at the starboard end, and port pin end boat or buoy.
- 10.3** The finishing marks will be a RC service/mark boat at the starboard end, and a port pin end boat or buoy.
- 10.4** Change marks are inflatable yellow buoys.

## **11 OBSTRUCTIONS**

- 11.1** The area between Loon Island light and Russell Point (south of LSYC) is to be considered an obstruction.

## **12 THE START**

- 12.1** [DP] Prior to the first warning signal of the first race of the day, boats shall sail on Starboard Tack by the stern of the RC starboard-end boat, displaying flag L, to be recorded.
- 12.2** The starting line will be between a staff displaying an orange flag on the signal boat and either the course side of a nearby inflatable mark or a staff displaying an orange flag on a RC boat.
- 12.3** The RC will attempt to hail individual recalls on VHF (72) using bow or sail numbers. This changes RRS 29.1. The failure to hail, the order in which boats

are hailed, or the untimely hail of a boat or boats shall not be grounds for requesting redress. This changes RRS 62.1 (a).

- 12.4 As a courtesy, the bow or sail numbers of the boats scored OCS, UFD or BFD may be posted at the weather mark on a white board by a RC boat.
- 12.5 A boat starting later than 5 minutes after her starting signal will be scored Did Not Start (DNS) without a hearing. This changes RRS A4 and A5.

### 13 CHANGING THE NEXT LEG OF THE COURSE

- 13.1 To change the next leg of the course, the RC will lay a new mark (or move the finishing line) and remove the original mark as soon as practicable. When in a subsequent change a new mark is replaced, it will be replaced by an original mark.

### 14 THE FINISH

- 14.1 The finishing line will be between a staff displaying an orange flag on the finishing line boat and either the course side of a nearby inflatable mark or a staff displaying an orange flag on a RC boat. This changes Race Signals – Blue flag) .

### 15 PENALTY SYSTEM

- 15.1 Appendix V1 shall apply. See Attachment A.
- 15.2 A boat that has taken a penalty or retired under rule 44.1 shall complete and submit an acknowledgment form available on the [Event Website](#) and at the protest committee desk, within the protest time limit.
- 15.3 Appendix T shall apply as modified in SI 17.7.
- 15.4 The jury may apply discretionary penalties for infractions of the rules other than RRS 2, Rules of Part 2, or RRS 31.

### 16 TIME LIMITS

- 16.1 If no boat has passed Mark 1 within 40 minutes the race will be abandoned.
- 16.2 15.2 The time limit for the first boat to finish the race is 120 minutes.
- 16.3 15.3 Boats failing to finish within 30 minutes of the first boat sails the course and finishes will be scored Time Limit Expired (TLE) without a hearing. TLE is defined as the number of finishers plus 2. This changes RRS 35, A4, and A5.

### 17 HEARING REQUESTS

- 17.1 Protest forms are available on the [Event Website](#) and at the protest committee office. Protests shall be delivered there within the protest time limit.
- 17.2 As the RC signal boat docks the RC will display flag B with one sound ashore (see SI 5.1) and post the time limit on the official notice board and on the [Event Website](#). The protest time limit is 30 minutes after the display of this signal.
- 17.3 Notices will be posted no later than 30 minutes after the protest time limit to inform competitors of hearing in which they are parties or named as witnesses.

Hearings will be held in protest committee room, located at the LSYC office. Protests referred to the protest committee from the arbitrators will be added to the list of scheduled protests as they become available from arbitration.

- 17.4** Notices of protest by the RC or protest committee will be posted to inform boats under RRS 61.1(b).
- 17.5** The scoring abbreviation for a discretionary penalty imposed by the jury will be DPI.
- 17.6** If the RC posts a list of boats scored OCS, ZFP, UFD, or BFD on the official notice board before the protest time limit, a request for redress based on such a posted score shall be made no later than one hour after the protest time limit. This changes RRS 62.2.
- 17.7** 16.9 WS APPENDIX T: ARBITRATION T1, T2, T3 and T4 will apply as changed: T1(b) A post race penalty is a 20% Scoring Penalty if taken before the protest time limit or a 30% Scoring Penalty if taken after the protest time limit but before the beginning of a hearing involving the incident. Scoring Penalty calculated as stated in rule 44.3(c). However, rule 44.1(a) applies.
- 17.8** Decisions of the international jury will be final as provided in RRS 70.5.

## **18 SCORING**

- 18.1** The Low Point scoring system RRS Appendix A will be used, however RRS A2 is changed as follows.
  - (a)** When fewer than six (6) races have been completed, a boat's series score will be the total of her race scores.
  - (b)** When from six (6) to nine (9) races have been completed, a boat's series score will be the total of her races scores excluding her worst score.
  - (c)** When ten (10) or more races have been completed, a boat's series score will be the total of her race scores excluding her two worst scores.
- 18.2** Four (4) races are required to be completed to constitute a series.

## **19 SAFETY**

- 19.1** The safety of a boat and her entire management, including insurance, shall be the sole and inescapable responsibility of the owner and/or entrant.
- 19.2** Competitors leaving the race course before the end of a race shall inform the RC, the Jury, or the Race Office as soon as possible.
- 19.3** Competitors not leaving the dock on a race day shall inform the Jury or the Race Office.

## **20 REPLACEMENT OF CREW OR EQUIPMENT**

- 20.1** A crew nominated or listed for this event may be different for different days only if scheduled in advance at check-in/registration.
- 20.2** Substitution of competitors during the regatta will not be allowed without prior written approval of the Race Committee.
- 20.3** Substitution of damaged or lost equipment will not be allowed unless authorized by the Race Committee. Requests for substitution shall be made at the first reasonable opportunity.

## 21 EQUIPMENT AND MEASUREMENT CHECKS

- 21.1 A boat or equipment may be inspected at any time for compliance with the class rules.
- 21.2 On the water, a boat can be instructed by a race committee equipment inspector or measurer to proceed immediately to a designated area for inspection.

## 22 TRASH DISPOSAL

- 22.1 Trash may be placed aboard official or support person vessels.

## 23 COACH AND SUPPORT BOATS

- 23.1 Support boats, including coach and press boats shall register at the Race Office during the registration period and fly an identity flag, such flag to be prominently displayed at all times when afloat.
- 23.2 All support or coach boats shall stay more than 30 meters to leeward of the starting line, more than 30 meters away from marks of the course and more than 130 meters away from any racing boats from the time of the preparatory signal for the first race until all boats have finished racing for the day or the Race Committee signals a postponement or abandonment of racing for the day.
- 23.3 [DP] All Support Vessels shall be equipped with a functioning engine safety cut-out switch (kill switch) which shall remain attached to the support person at the helm at all times while the engine is running. Failure to comply may be misconduct and/or result in expulsion from the event.

## 24 PRIZES

- 24.1 The Sonar Class Perpetual Trophy will be awarded to the winner of the Championship.
- 24.2 Prizes will be awarded to the skipper and crew of the first five boats in the series.
- 24.3 Additional prizes may be given at the discretion of the Organizing Authority.

## 25 RISK STATEMENT AND DISCLAIMER OF LIABILITY

- 25.1 RRS 3 states: 'The responsibility for a boat's decision to participate in a race or to continue to race is hers alone.' By participating in this event each competitor agrees and acknowledges that sailing is a potentially dangerous activity with inherent risks. These risks include strong winds and rough seas, sudden changes in weather, failure of equipment, boat handling errors, poor seamanship by other boats, loss of balance on an unstable platform and fatigue resulting in increased risk of injury. **Inherent in the sport of sailing is the risk of permanent, catastrophic injury or death by drowning, trauma, hypothermia, or other causes.**
- 25.2 A Liability Waiver will be posted on the ONB and available at registration and on the [event website](#). Skippers, crews, and Support Persons must sign this Waiver in hard copy or electronically in order to participate in the event.

## 26 INSURANCE

Each participating boat shall be insured with valid third-party liability insurance with a minimum coverage of US \$500,000 per incident or the equivalent. It is the owner or

owner's representative's sole and inescapable responsibility to ensure that the insurance is in place and is adequate prior to participating in this event. The organizing authority may ask for a copy of your insurance binder.

## 27 CHARTER BOATS

Charter boats may be available. For further information please contact:

Betsy Cetron: [betsycetron@gmail.com](mailto:betsycetron@gmail.com)

## 28 FURTHER INFORMATION

For further information please contact:

**Lake Sunapee Cruising Fleet**

[lakesunapeecruisingfleet@gmail.com](mailto:lakesunapeecruisingfleet@gmail.com)

**David Heckel** – Regatta Co-Chairman

Email – [dheckel@culverttechnologies.com](mailto:dheckel@culverttechnologies.com)

**Frank Lemay**, Regatta Co-Chairman

Email – [frankl@milestonenh.com](mailto:frankl@milestonenh.com)

**Principal Race Officer:**

**Carl Schellbach**, USSailing National Race Officer

Email: [carl.schellbach@comcast.net](mailto:carl.schellbach@comcast.net)

---

## ATTACHMENT A - US Sailing Prescriptions

The following US SAILING prescriptions to rules 61.4, 67, 76.1 and Appendix V1.

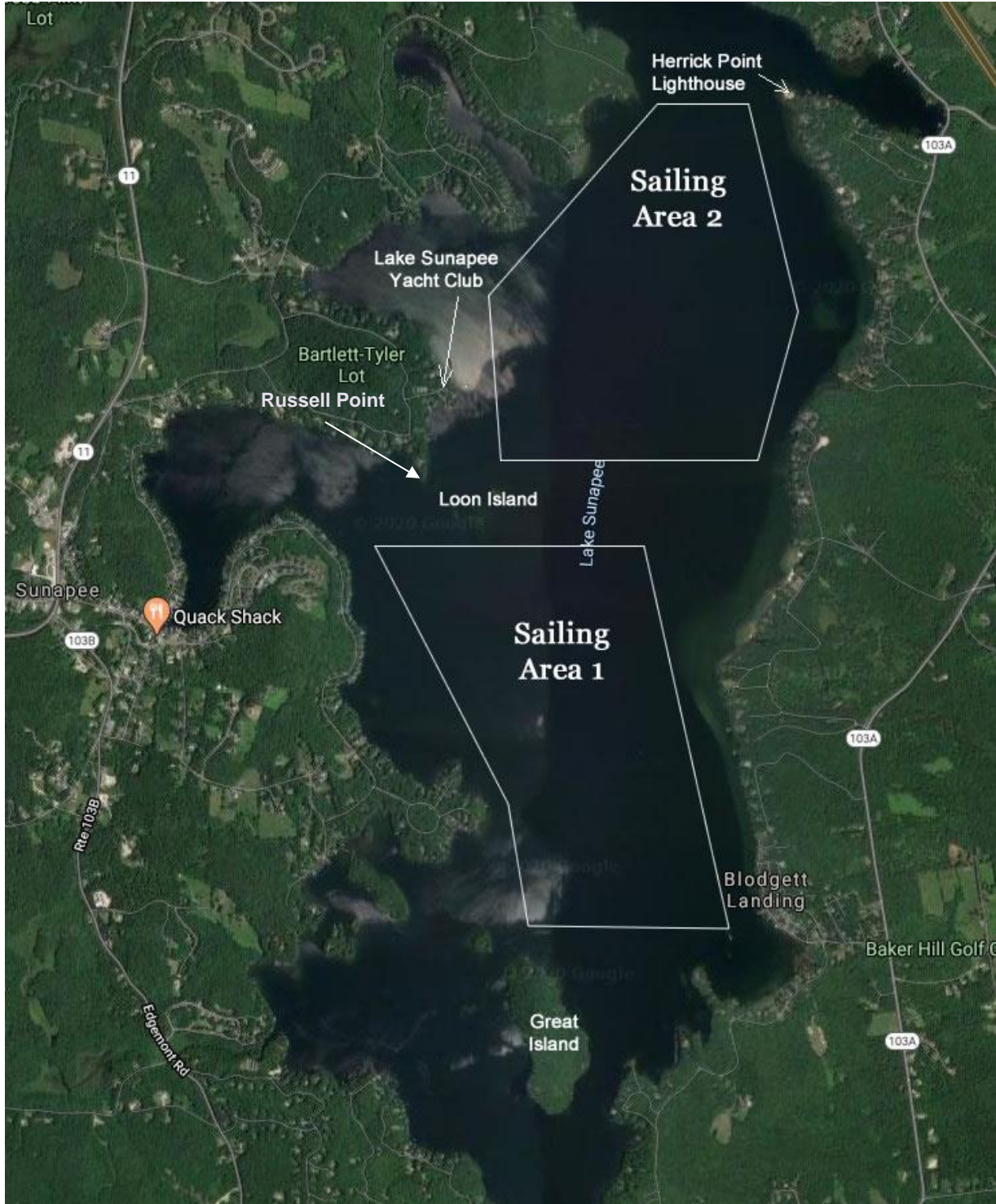
- A1. Add rule 61.4:  
“US Sailing prescribes that no fees shall be charged for protests or requests for redress.”
- A2. After rule 67 add:  
“US Sailing prescribes that:  
(a) A boat that retires from a race or accepts a penalty does not, by that action alone, admit liability for damages.  
(b) A protest committee shall find fact and make decisions only in compliance with the rules. No protest committee or US SAILING appeal authority shall adjudicate any claim for damages. Such a claim is subject to the jurisdiction of the courts.  
(c) A basic purpose of the rules is to prevent contact between boats. By participating in an event governed by the rules, a boat agrees that responsibility for damages arising from any breach of the rules shall be based on fault as determined by the application of the rules, and that she shall not be governed by the legal doctrine of ‘assumption of risk’ for monetary damages resulting from contact with other boats.”
- A3. After rule 76.1 add:  
”US Sailing prescribes that an organizing authority or race committee shall not reject or cancel the entry of a boat or exclude a competitor eligible under the notice of race and sailing instructions for an arbitrary or capricious reason or for reason of race, color, religion, national origin, gender, sexual orientation, or age.  
“However, an organizing authority or race committee may exclude a competitor who is a citizen of, or holds a World Sailing ID as an MNA member of, a country listed on the US Sailing website at <https://www.ussailing.org/exclusion>.”
- A4. **Add APPENDIX V ALTERNATIVE PENALTIES SECTION V1**  
V1. PENALTIES AT THE TIME OF THE INCIDENT  
The first two sentences of rule 44.1 are changed to: ‘A boat may take a One-Turn Penalty when she may have broken a rule of Part 2 or rule 31 while *racing*. However, when she may have broken a rule of Part 2 while in the *zone* around a *mark* other than a starting *mark*, her penalty shall be a Two-Turns Penalty.’



---

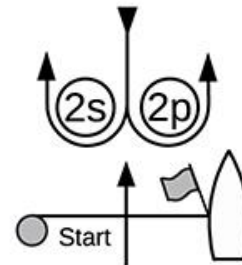
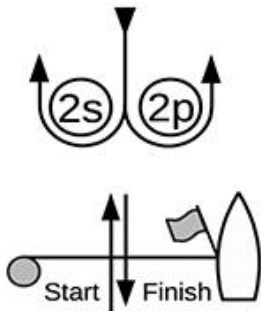
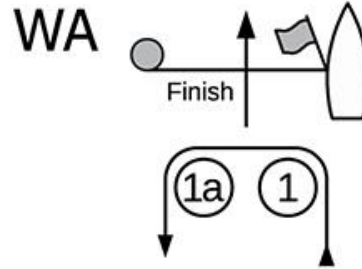
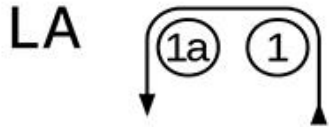
**ATTACHMENT B - Racing Area**

Dependent on weather conditions the RC will attempt to use the approximate racing area as shown below. Note the area between Russell Point and Loon Island is an Obstruction (SI 11).



**Not to be used for navigation**

**ATTACHMENT C - Courses**



Course LA – Windward/Leeward with Offset Mark, Leeward Finish	
Signal	Mark Rounding Order
LA2	Start – 1 – 1a – 2s/2p – 1 – 1a – Finish
LA3	Start – 1 – 1a – 2s/2p – 1 – 1a – 2s/2p – 1 – 1a – Finish
LA4	Start – 1 – 1a – 2s/2p – 1 – 1a – 2s/2p – 1 – 1a – 2s/2p – 1 – 1a – Finish

Course WA – Windward/Leeward with Offset Mark, Windward Finish	
Signal	Mark Rounding Order
WA2	Start – 1 – 1a – 2s/2p – Finish
WA3	Start – 1 – 1a – 2s/2p – 1 – 1a – 2s/2p – Finish
WA4	Start – 1 – 1a – 2s/2p – 1 – 1a – 2s/2p – 1 – 1a – 2s/2p – Finish