



**International Lightning Class Association  
World Championship  
Carolina Yacht Club  
Wrightsville Beach, NC, USA  
May 16-21, 2022**

**Sailing Instructions**

**International Lightning Class Association, Cape Fear Fleet 511 and the Carolina Yacht Club, are the organizing authority.**

The notation '[NP]' in a rule means that a boat may not protest another boat for breaking that rule. This changes RRS 60.1(a).

**1 RULES**

- 1.1 The event is governed by the rules as defined in *The Racing Rules of Sailing*.
- 1.2 In RRS 30.4, 'sail number' is changed to 'bow number'.
- 1.3 Only the US Sailing Prescriptions to the following rules shall apply:  
88.2, 61.4, Appendix R, 60.3, 67, 70.5(a), 76.1.

**2 CHANGES TO THE SAILING INSTRUCTIONS**

- 2.1 Any change to the sailing instructions will be posted before 0900 on the day it will take effect. Any change to the schedule of races will be posted by 2000 on the day before it will take effect.

**3 COMMUNICATIONS WITH COMPETITORS**

- 3.1 Notices to competitors will be posted on the online official notice board located at:  
<https://yachtscoring.com/emenu.cfm?eID=14816>

3.2 The race office is located in the upstairs 1853 room.

3.3 The race committee will be using VHF channel 78A USA to communicate with the fleet as described in Notice of Race 3.1.

**4 CODE OF CONDUCT**

- 4.1 [DP][NP] Competitors and support persons shall comply with reasonable requests from race officials.

**5 SIGNALS MADE ASHORE**

- 5.1 Signals made ashore will be displayed from the flagpole at the sound side gazebo.
- 5.2 When flag L is displayed ashore over a numeral pennant, the numeral pennant indicates the number of the notice to competitors that is posted. This changes race signal L.

Carolina Yacht Club  
401 South Lumina Avenue, Wrightsville Beach, NC 28480  
Phone: (910) 256-3396  
Website: <https://carolinayachtclub.org>

5.3 When flag “AP” is displayed ashore, ‘1 minute’ is replaced with ‘not less than 60 minutes’ in the RRS race signal “AP”.

**6 SCHEDULE OF RACES**

6.1

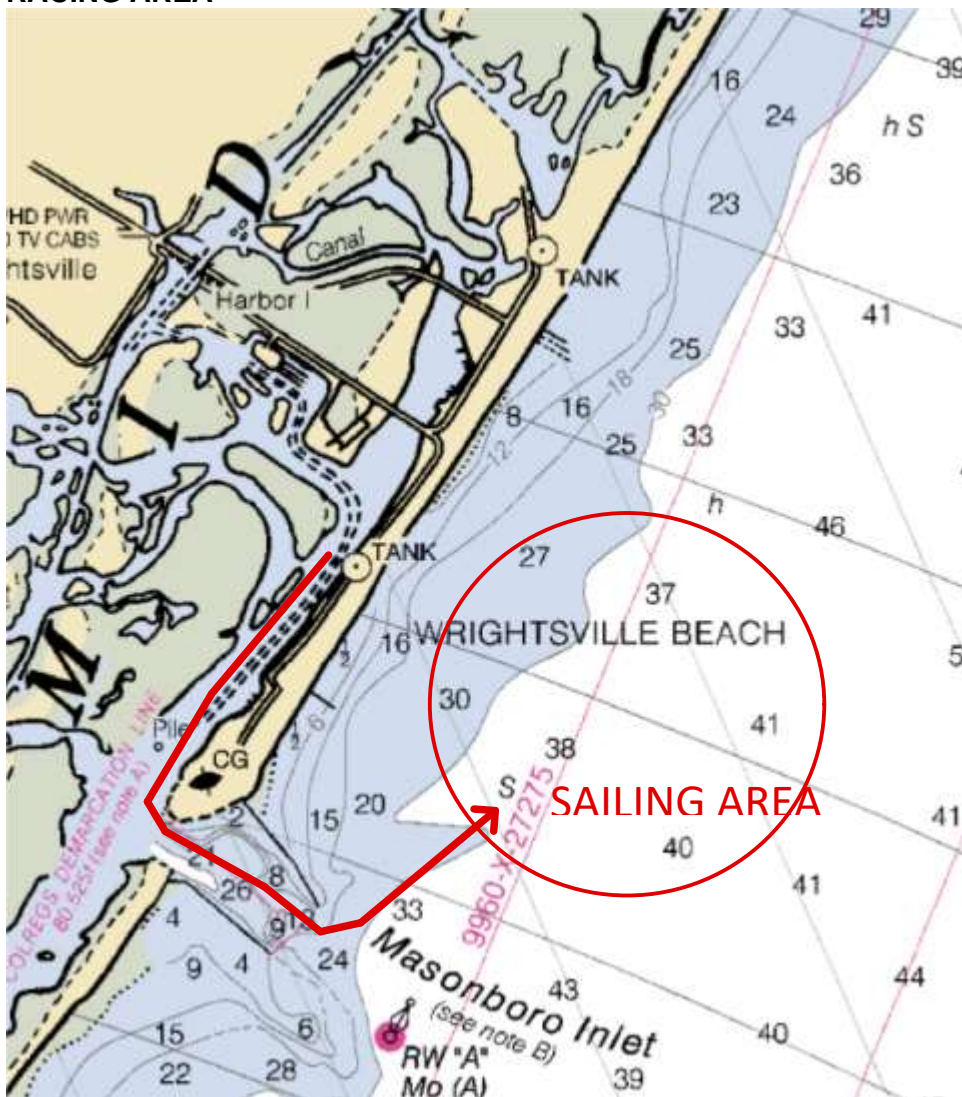
Date	Time	Event
May 17, Tuesday	1300	Warning signal of the Practice Race
May 18, Wednesday	1200	Warning signal of the first race of the day
May 19, Thursday	1200	Warning signal of the first race of the day
May 20, Friday	1200	Warning signal of the first race of the day
May 21, Saturday	1200	Warning signal of the first race of the day

6.2 To alert boats that a race or sequence of races will begin soon, the orange starting line flags will be displayed with one sound at least five minutes before a warning signal is made.

**7 CLASS FLAGS**

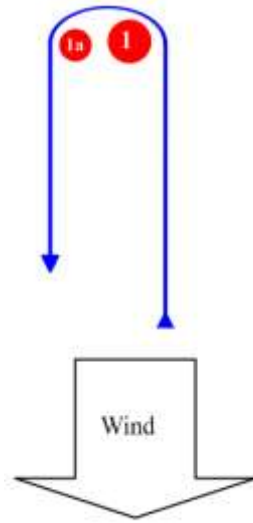
7.1 The class flag will be a red Lightning class logo on a white background

**8 RACING AREA**

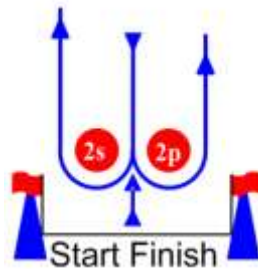


**9 COURSES**

9.1 The diagram below shows the course, including the approximate angles between legs, the order in which marks are to be passed, and the side on which each mark is to be left.



Start-1-1a-2s/p-1-1a-Finish



9.2 No later than the warning signal, the race committee signal vessel will display the approximate compass bearing of the first leg.

**10 MARKS**

Starting	Race committee vessels
Marks 1	8 ft Yellow Tetrahedron
Mark 1a	Orange Tomato
Mark 2p/s	5 ft Yellow Tetrahedron
New mark as provided in Si 13.1	8 Ft Yellow tetrahedron with a black band
Finish	Race committee vessels

**11 SECTION INTENTIONALLY LEFT BLANK**

**12 THE START**

12.1 The starting line will be between staffs displaying orange flags on the starting marks.

12.2 A boat that does not start within 4 minutes after her starting signal will be scored Did Not Start without a hearing. This changes RRS A5.1 and A5.2.

12.3 The Race Committee will broadcast the bow number of all boats observed to be OCS at the start twice; it will not alter the list based on a boat's actions subsequent to the start. Failure of the Race Committee to make a broadcast or to time it accurately will not be grounds for a request for redress. This changes RRS 60.1(b) and 62.1(a).

**13 CHANGE OF THE NEXT LEG OF THE COURSE**

13.1 To change the next leg of the course, the race committee will lay a new mark (or move the finishing line) and remove the original mark as soon as practicable

## THE FINISH

13.2 The finish line will be between staffs displaying blue flags on the finishing marks.

## 14 PENALTY SYSTEM

14.1 See Notice of Race 13.

## 16 TIME LIMITS AND TARGET TIMES

Mark 1 Time Limit	Race Time Limit	Finishing Window	Target time
45 minutes	150 minutes	30 minutes	75 minutes

16.1 If no boat has passed the first mark within the Mark 1 Time Limit, the race will be abandoned.

16.3 Failure to meet the Target Time will not be grounds for redress. This changes RRS 62.1(a).

16.4 The Finishing Window is the time for boats to finish after the first boat sails the course and finishes. Boats still racing, but failing to finish within the Finishing Window, and not subsequently retiring, penalized or given redress, will be scored Time Limit Expired (TLE) without a hearing. A boat scored TLE shall be scored points for the finishing place two more than the points scored by the last boat that finished within the Finishing Window. This changes RRS 35, A5.1, A5.2 and A10

## 17 HEARING REQUESTS

17.1 Hearing requests shall be submitted online or at the race office.

17.2 The protest time limit is 120 minutes after the last boat has finished the last race of the day or the race committee signals no more racing today, whichever is later. The time will be posted on the online official notice board.

17.3 Protest notices will be posted on the online official notice board within 30 minutes of the end of protest time to inform competitors where and when there is a hearing in which they are parties to a protest or named as witnesses.

17.4 Protest hearings will be in the 1853 room.

17.5 An international jury has been appointed in accordance with RRS 91(b).

17.6 The right of appeal from a protest committee decision is denied as provided in RRS 70.5.

## 18 SCORING

18.1 See Notice of Race 14.

18.2 To request correction of an alleged error in posted results or to schedule a meeting with the race official(s) who made a call, a boat shall complete an online scoring inquiry or file one at the race office.

## 19 SAFETY REGULATIONS

19.1 [NP] When flag V over flag H is displayed with one sound signal all boats shall return promptly and directly to the harbour. Further signals ashore. This changes RRS 37

19.2 RRS 37 is changed so that it applies when flag V or flag V over flag H is displayed with one sound.

19.3 [DP] [NP] On water prior to the warning signal of her first race of each day competitors shall sail past the Signal Vessel and hail their bow number.

19.4 [DP][NP] A boat that retires from a race shall notify the race committee at the first reasonable opportunity.

## 20 [DP] REPLACEMENT OF CREW OR EQUIPMENT

20.1 In the event of damage, boats and equipment may only be substituted with the permission of the technical committee, except as in SI 20.2. Equipment and crew substitution application forms are available at the race office.

20.2 If the damage occurs less than 2 hours before the first scheduled start on a racing day, and before the start of the last race of the day, provisional verbal permission shall be obtained from the technical committee or race committee before using the equipment in a race and permission shall be requested before the end of the protest time limit at the end of the day in which the substitution takes place. Equipment Substitution application forms are available at the race office.



**21 EQUIPMENT AND MEASUREMENT CHECKS**

21.1 See Notice of Race 9.

**22 SECTION INTENTIONALLY LEFT BLANK**

**23 OFFICIAL VESSELS**

23.1 Official vessels will be marked as follows:

<b>Safety/patrol</b>	
<b>Race Committee</b>	
<b>Jury</b>	Code flag J
<b>Media</b>	Yellow Flag with Black 'P'

23.2 Failure of an official vessel to display an identifying flag will not be grounds for redress under RRS 60.1(b).

**24 SUPPORT TEAMS**

24.1 See Notice of Race 15.

**25 TRASH DISPOSAL**

25.1 Trash may be placed aboard official or support person vessels.

**26 BERTHING**

26.1 See Notice of Race 17.

**27 HAUL-OUT RESTRICTIONS**

27.1 See Notice of Race 18.

**28 SECTION INTENTIONALLY LEFT BLANK**

**29 PRIZES**

29.1 See Notice of Race 23.

**30 RISK STATEMENT**

30.1 See Notice of Race 21.

**31 INSURANCE**

31.1 See Notice of Race 22.