

2022 Viper 640
Youth & Women's
North American Championship
October 15th-16th, 2022
Gulfport, MS
Organizing Authority (OA): Gulfport Yacht Club



The notation '[DP]' in a rule in the notice of race (NoR) or sailing instructions (SIs) means that the penalty for a breach of that rule may, at the discretion of the protest committee, be less than disqualification. This changes RRS 60.1(a). All times are US Central Time.

1 RULES

- 1.1 The event is governed by the rules as defined in *The Racing Rules of Sailing*.
- 1.2 Appendix T (Arbitration) and Appendix V (Alternative Penalties) apply.
- 1.3 The RRS changed by these sailing Instructions are listed below:

RRS	SI Section
Race Signals	4.2
Race Signals	7.1
62.1(a)	10.3
A5.1 & A5.2	10.4
35	14.1
35, A5.1, A5.2 & A10	14.2
62.2	15.3
A2.1	16.3

2 CHANGES TO SAILING INSTRUCTIONS

- 2.1 Any change to the sailing instructions will be posted no later than 90 minutes before the scheduled warning signal for the first race on the day it will take effect, except that any change to the schedule of races will be posted by 2000 on the day before it will take effect.

3 COMMUNICATIONS WITH COMPETITORS

- 3.1 Notices to competitors will be posted on the notice board which is online at <https://yachtscoring.com/emenu.cfm?eid=14851> and on the official notice board located at on the lower deck.
- 3.2 Race officials can be reached by email at samsonvasquez@gmail.com or by phone at (228) 323-1336.
- 3.3 On the water, the race committee intends to monitor and communicate with competitors on VHF radio channel 72.
- 3.4 [DP] While racing, except in an emergency, a boat shall not make voice or data transmissions and shall not receive voice or data communication that is not available to all boats.

4 SIGNALS MADE ASHORE

- 4.1 Signals made ashore will be displayed from the flagpole on the beach.
- 4.2 When flag AP is displayed ashore, '1 minute' is replaced with 'not less than 30 minutes' in Race Signals AP.

5 SCHEDULE OF RACES

Friday, October 14	1200-1700 1200-1730	Boat Measurement & Sail Inspection Check-In Table Open
Saturday October 15	1000 1200	Skipper & Competitor Meeting First Warning Signal, additional races to follow
Sunday October 16	1100 1530	First Warning Signal, additional races to follow No Warning Signal after this time Awards will be as soon as possible after racing

- 5.1 The OA is targeting 3 to 4 races per day, dependent on weather conditions and best judgement of the Race Committee.

6 CLASS FLAGS

- 6.1 The class flag for the Women will be the Viper class symbol against a white background. The class flag for the Youth will be a red flag with a white star on it.

7 RACING AREA

- 7.1 The racing areas are shown in Sailing Instruction Exhibit A and are designated 1 and 2. The Race Committee will display numerical pennant #1 or # 2 from the Race Committee Signal Boat along with Flag "L" on departure to the racing area each day. The number displayed will indicate the racing area where the Race Committee plans to set the initial course of the day.

8 COURSES

- 8.1 SI Exhibit B shows the courses, the order in which marks are to be passed, and the side on which each mark is to be left.
- 8.2 No later than the warning signal, the race committee signal vessel will display the course and approximate compass bearing of the first leg.

9 MARKS

- 9.1 The starting mark will be a green tetrahedron. The finish mark will be an orange ball.
- 9.2 Marks 1, 2s, & 2p will be orange tetrahedrons. Offset-Mark 1a will be an orange ball.
- 9.3 New marks 1, 2s, & 2p, as provided in SI 11, will be yellow tetrahedrons. Offset-Mark 1a will remain orange.

10 THE START

- 10.1 Races will be started using RRS 26.
- 10.2 The starting line is between a staff displaying an orange flag on the race committee vessel and the course side of the starting mark.
- 10.3 If any part of a boat's hull is on the course side of the starting line at her starting signal and she is identified, the race committee will attempt to hail her sail number. Boats may not base a request for redress on the failure to hail her number, failure of her to hear such a hail, or the order in which boats are hailed.
- 10.4 A boat that does not start within 5 minutes after her starting signal will be scored Did Not Start without a hearing.

11 CHANGE OF THE NEXT LEG OF THE COURSE

- 11.1 To change the next leg of the course, the race committee will lay a new mark (or move the finishing line) and remove the original mark as soon as practicable. New marks set after a CHANGE OF COURSE (either direction or length) will be a yellow tetrahedron. When in a subsequent change a new mark is replaced, it will be replaced by an original mark.

12 THE FINISH

- 12.1 The finishing line is between a staff displaying a blue flag on the race committee vessel and the course side of the finishing mark.

13 PENALTY SYSTEM

- 13.1 Appendix T (Arbitration) and Appendix V (Alternative Penalties) apply.

14 TIME LIMITS [AND TARGET TIMES]

- 14.1 The time limit for a race will be 75 minutes.
- 14.2 The finishing window (the time for boats to finish after the first boat sails the course and finishes) will be 15 minutes. Boats failing to finish within the finishing window, and not subsequently retiring, penalized, or given redress, will be scored Time Limit Expired (TLE) without a hearing. A boat scored TLE shall be scored points for the finishing place two more than the points scored by the last boat that finished within the finishing window, but no worse than points for DNF.

15 HEARING REQUESTS

- 15.1 The protest time limit is 60 minutes after the race committee signal vessel docks. The time will be posted on the official notice board.
- 15.2 Hearing request, scoring inquiry, and penalty acceptance forms are available at the race office, and on the online notice board (see "General Race Forms"). They shall be delivered to the race office in person.

- 15.3 When the race committee receives a scoring inquiry form, it will review its records and respond as soon as practicable. A request for redress based on an incident identified in a scoring inquiry will meet the time limit if the scoring inquiry is delivered within the protest time limit and the request for redress is delivered as soon as reasonably possible after being notified of the race committee's response (in writing or through the online system) to the scoring inquiry.
- 15.4 Notices will be posted no later than 30 minutes after the protest time limit to inform competitors of location and schedule of hearings in which they are parties or named as witnesses.
- 15.5 The race committee will post a list of race committee scoring actions no later than the protest time limit.
- 15.6 [DP] The protest committee may impose penalties less than disqualification, for a violation of the class rules and racing rules other than those of RRS Part 1 and Part 2.

16 SCORING

- 16.1 RRS A5.3 will apply.
- 16.2 One race is required to be completed to constitute a series.
- 16.3 When fewer than six races have been completed, a boat's series score will be the total of her race scores. When six or more races have been completed, a boat's series score will be the total of her race scores excluding her worst score.

17 SAFETY REGULATIONS

- 17.1 [DP] A boat that retires from a race shall notify the race committee at the first reasonable opportunity.

18 REPLACEMENT OF CREW OR EQUIPMENT

- 18.1 [DP] Substitution of competitors is not allowed without prior written approval of the race committee.
- 18.2 [DP] Substitution of damaged or lost equipment is not allowed unless authorized in writing by the race committee. Requests for substitution shall be made to the committee at the first reasonable opportunity, which may be after the race.

19 EQUIPMENT AND MEASUREMENT CHECKS

- 19.1 A boat or equipment may be inspected at any time for compliance with the class rules, notice of race and sailing instructions.
- 19.2 [DP] When instructed by a race official on the water, a boat shall proceed to a designated area for inspection.

20 [DP] SUPPORT TEAMS

- 20.1 Support person vessels shall register with the race office.
- 20.2 On race days, support vessels may not communicate any information to competitor boats that could affect performance or racing, from the moment the team leaves the dock or mooring until the end of racing for the day. See class rule 10.5.
- 20.3 Support vessels may not provide provisions or equipment to competitors without express permission from the race committee.
- 20.4 Support vessels shall carry a VHF radio, monitor race committee communications, and, if called upon, be available for safety assistance.
- 20.5 Team leaders, coaches and other support persons shall stay outside areas where boats are racing from the time of the preparatory signal for the first start until all boats have finished or retired or the race committee signals a postponement, general recall, or abandonment.

21 TRASH DISPOSAL

- 21.1 Trash may be placed aboard official or support person vessels.

22 BERTHING

- 22.1 [DP] Boats shall not hauled out without permission from the OA and also must be kept in the water overnight.

23 PRIZES

- 23.1 Prizes will be awarded in accordance with the NoR. Additional prizes may be awarded at the discretion of the organizing authority.

24 RISK STATEMENT

24.1 RRS 3 states: 'The responsibility for a boat's decision to participate in a race or to continue to race is hers alone.' By participating in this event each competitor agrees and acknowledges that sailing is a potentially dangerous activity with inherent risks. These risks include strong winds and rough seas, sudden changes in weather, failure of equipment, boat handling errors, poor seamanship by other boats, loss of balance on an unstable platform and fatigue resulting in increased risk of injury. Inherent in the sport of sailing is the risk of permanent, catastrophic injury or death by drowning, trauma, hypothermia or other causes.

EXHIBIT A:

#1 (WEST)

#2 (EAST)

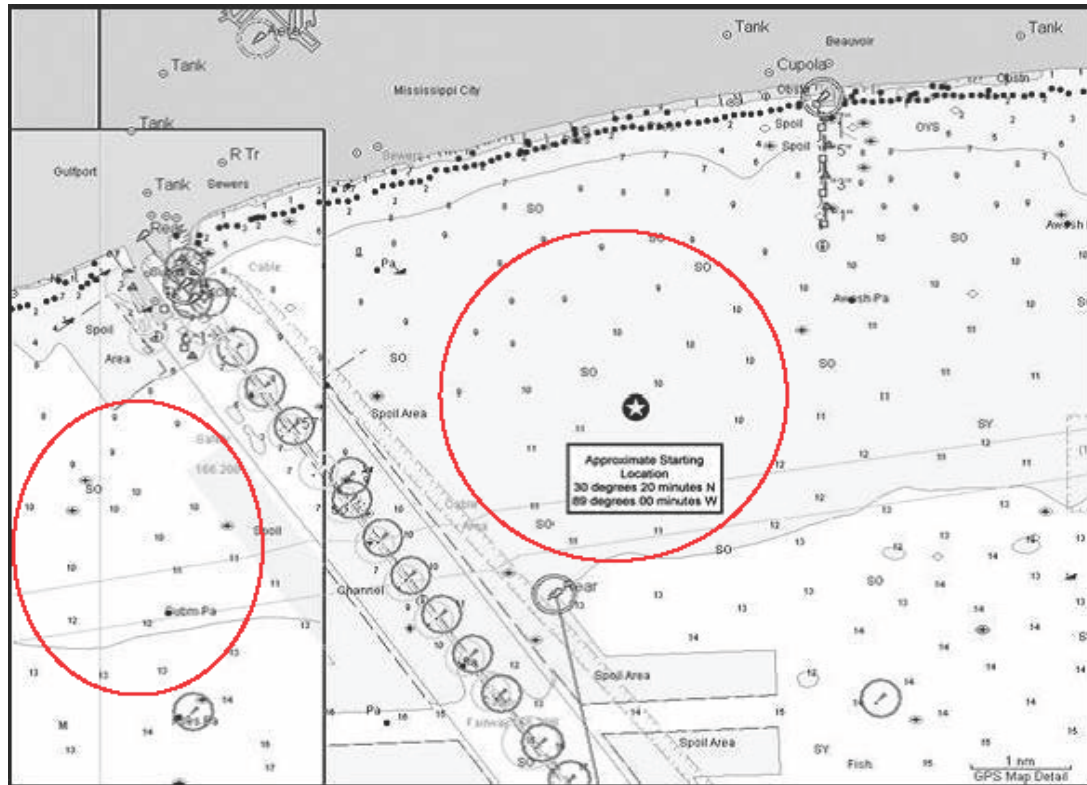
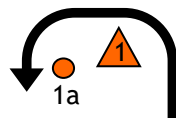


EXHIBIT B:



Course Descriptions:
 W2 - Start, 1, 1a, 2p or 2s, 1, 1a, Finish
 W3 - Start, 1, 1a, 2p or 2s, 1, 1a, 2p 2s, 1, 1a, Finish

