



**Lake Ontario 300
Challenge
Race
Presented by driveHG**

July 15 – July 19, 2022

Organizing Authority

Lake Ontario Offshore Racing of the Port Credit Yacht Club

www.loor.ca

**& For LO300 Solo Challenge, with the Great Lakes Singlehanded
Society**

www.solosailors.org

Sailing Instructions

Version 1

Published on 2022-07-01

~

*A component of Ontario Sailing's Offshore Keelboat PHRF-LO & ORC
Championships*

SAILING INSTRUCTIONS

The notation '[DP]' in a rule in the Notice of Race (NoR), Sailing Instructions (SIs) or other additional document that is a rule means that the penalty for a breach of that rule may, at the discretion of the protest committee, be less than disqualification.

The notation '[NP]' in a rule in the Notice of Race (NoR), Sailing Instructions (SIs) or other additional document that is a rule means that the penalty for a breach of that rule will not be grounds for a protest by a sailboat.

The Racing Rules of Sailing (RRS) 2021-2024 state that items, *Rules*, and the Notice of Race (NoR) do not have to be repeated in Sailing Instructions (SIs). Both the NoR and SIs describe the conduct of the event and need to be used jointly during the event.

1 The RULES

1.1 See Notice of Race (NoR).

1.2 OA Supplied Flags

Competitors shall display any OA supplied flags as follows:

- While in harbour, from the forestay
- While racing, from the backstay. If the boat has no backstay, from the starboard shroud. This identifies the boat as participating in the LO300.

2 CHANGES TO SAILING INSTRUCTIONS

2.1 Any change to the sailing instructions will be posted before 0900 on the day it will take effect, except that any change to the schedule of races will be posted by 2000 on the day before it will take effect.

3 COMMUNICATIONS WITH COMPETITORS.

3.1 Notices to competitors will be posted on the official notice board located at https://yachtscoring.com/notice_board.cfm?eid=14881

3.2 The race office is located virtually: 1-866-462-8828, racecommittee@loor.ca.

3.3 [DP] Radio Communications

3.3.1 Marine VHF Channel 71 Canadian shall be used by the Race Committee for radio communication during the race.

3.3.2 Each sailboat shall monitor VHF Channel 71 from 30 minutes before her warning signal until one hour after her start, and from approximately one hour before finishing or 5 NM from the Finish, which ever occurs later, until 30 minutes after finishing

3.3.3 Sailboats are encouraged to talk to other sailboats in the race on marine VHF channel 71 throughout the race, especially at 1000 and 2200 EDT.

3.3.4 Sailboats shall monitor marine VHF channel 16 at all other times.

4 CODE OF CONDUCT

4.1 [DP] Competitors and support persons shall comply with reasonable requests from race officials.

4.2 [DP] Competitors and support persons shall handle any equipment or place advertising provided by the organizing authority with care, seamanship, in accordance with any instructions for its use and without interfering with its functionality.

5 SIGNALS MADE ASHORE

5.1 Signals made ashore will be displayed on the main flagpole of the PCYC.

5.2 When flag AP is displayed ashore, '1 minute' is replaced with 'not less than 60 minutes' in Race Signals AP.

6 SCHEDULE OF RACES

6.1 The first warning signal for

Solo Challenge 1025 EDT, Saturday, July 16, 2022

Doubled Handed & Fully Crewed 1105 EDT, Saturday, July 16, 2022

6.2 Classes, division, and fleet splits and starting sequences, including class flags, for RRS 26, shall be made available no later than 1200 EDT Friday, July 15, 2022, on the [Official Notice Board](#). They may be published earlier. The assignment of participants to a division, fleet or class is subject to change.

7 CLASS FLAGS

7.1 See 6.2 for class flags for RSS 26.

8 RACING AREA

8.1 The race will occur in Lake Ontario. See [Event Guide and Supplementary Information](#)

9 THE COURSES

9.1 Main Duck Island Course

See [Event Guide and Supplementary Information](#)

START		
To	driveHG Mark {Fogh Clarkson Mark (LSYC)}	Left to port
To	Niagara Bar Lighted Buoy 2	Left to port
To	Main Duck and Yorkshire Islands	Left to starboard
To	Ford Shoal	Left to starboard

FINISH	PCYC Finish Mark for Onshore Finish & PCYC Shore Station	
---------------	----------------------------------------------------------	--

The approximate distance is 300NM.

Code Flag D will be flown to indicate the Solo fleets on the Main Duck Course are starting at or before the warning for the first such fleet.

Code Flag F will be flown to indicate the Fully Crewed and Double Handed fleets on the Main Duck Course are starting at or before the warning for the first such class.

9.2 Scotch Bonnet Island Course

See [Event Guide and Supplementary Information](#)

START		
To	driveHG Mark {Fogh Clarkson Mark (LSYC)}	Left to port
To	Niagara Bar Lighted Buoy 2	Left to port
To	Scotch Bonnet Island	Left to port
Finish	PCYC Finish Mark for Onshore Finish & PCYC Shore Station	

The approximate distance is 185 NM.

Code Flag E will be flown to indicate the Fully Crewed and Double Handed fleets on the Scotch Bonnet Course are starting at or before the warning for the first such fleet.

10 MARKS

10.1 Marks in Alphabetical Order

MARK REFERENCE	TYPE	DESCRIPTION
driveHG Mark {Fogh Clarkson Mark (LSYC)}	Mark	Located approximately at 43° 30.64' N, 079° 33.65' W
Ford Shoal Buoy	Mark	A flashing green (4s.) mark located east of Oswego located at approximately 43° 26.955' N, 76° 35.34' W (Main Duck Island Course only) (Lighted Buoy 1)
LOOR Area	Start Mark	0.9 NM on a bearing of 080° magnetic from the entrance to the harbour at Port Credit Yacht Club located at approximately 43° 33.95' N 079° 32.32 W

Main Duck and Yorkshire Islands	Mark	Sailboats must round both Main Duck and Yorkshire islands including shoal marker buoys MM2, a red buoy with a flashing red light (4s.) located at approximately 43°54.55' N, 76°35.68' W and M9, a green buoy with flashing green light (4s.) located at approximately 43° 55.02' N, 76° 40.52' W (Main Duck Island Course only)
Niagara Bar Lighted Buoy 2	Mark	A red buoy marked "2", with a flashing red light (4s.), located at approximately 43°19.040'N, 79°04.235'W, 3.4 NM north of the light at Fort Niagara. (<i>Niagara Bar light buoy 2</i>)
PCYC Finish Mark for Onshore Finish	Mark	A white buoy with orange stripes and fixed low intensity amber (yellow) light, lighted only overnight, approximately 140 mag 0.13 NM from the shore station approximately at 43° 33.666' N 079° 33.319' W. See Diagram 2, The Finish - Onshore. Race Committee may post the actual set location on the Official Notice Boards
PCYC Race Committee Shore Station	Mark	A mast flying orange and blue flags, located on the headland immediately west of the entrance to the harbour at PCYC approximately at 43° 33.757' N 079° 33.456' W. See Diagram 2 The Finish – Onshore
Scotch Bonnet Island	Mark	A flashing white (4s.) light on a white skeleton tower (19.1m) located on a small island SW of Nicholson Island at approximately 43°53.95'N, 77°32.55'W (Scotch Bonnet Island Course only)

10.2 Marks as listed, above, should be at the identified latitude and longitude location. If a mark is not at the identified latitude and longitude location, or otherwise cannot be seen due to poor visibility, then the sailboat shall round the identified latitude and longitude location as indicated in the Sailing Instructions and continue with the race.

10.3 A record shall be entered in the sailboat's log detailing the timeline and efforts made to find the mark and the time that the mark's identified latitude and longitude was deemed to have been rounded. This record must be submitted as per the Notice of Race (NoR).

10.4 The sailboat's GPS tracking record shall be saved and provided for evidentiary review by the Race Committee on request.

11 OBSTRUCTIONS & EXCLUSION ZONES

11.1 None.

12 THE START

12.1 Races will be started by using rule 26, with an interval of at least one minute between a starting signal and the warning signal for the next start.

12.2 The starting line will be between an inflatable mark and the halyard carrying an orange flag on the Race Committee signal vessel.

12.3 After the first warning signal and prior to her warning signal, a sailboat shall keep clear of the starting area that extends one-quarter of the length of the starting line ahead of and behind the starting line. It shall also extend one-quarter of the length of the starting line past both ends of the starting line; see Diagram 3, The Starting Area.

12.4 *If and only if, code flag "L" is displayed, on the Race Committee Signal Vessel, sailboats shall sail on starboard tack close to the stern of the Race Committee Signal Vessel and shall report its sail number. Check in will not be complete until the Race Committee acknowledges the sailboat. Check in by VHF radio or cell phone may not be accepted.*

12.5 [NP] Any sailboats starting within the time limit and if the Race Committee is no longer on station, shall radio the Race Committee VHF Channel 71 Canadian when she is starting.

13 THE FINISH

13.1 The finish is between the Finish Mark and the blue & orange flags at the Race Committee Shore Station.

13.2 Each sailboat shall call/hail the Race Committee Shore Station approximately three (3) NM from the finish on VHF Channel 71 Canadian. Sailboats are required to maintain radio contact with the shore station throughout the finish to ensure correct identification of the finishing sailboat, until 30 minutes after finishing, whether day or night. When finishing between sunset and sunrise, all sailboats shall announce their sail numbers, immediately prior to finishing, and record their finish time.

13.3 After a sailboat has finished, the Race Committee may acknowledge the completion by providing the sailboat's finish time or other signal. This acknowledgement, the failure to make the acknowledgement or its order, will not be grounds for a request for redress. This changes RRS 62.1 (a).

14 PENALTY SYSTEM

14.1 The Scoring Penalty, RRS 44.3, applies.

15 TIME LIMITS

15.1 There is no time limit.

16 HEARING REQUESTS.

- 16.1 Protests shall be filed using online submission feature available after logging into the Owner's Corner on Race Document and Registration Web Site, within two hours of a sailboat's finish. See [Event Guide and Supplementary Information](#) on web site area for submission
- 16.2 Notices of protests by the Race Committee or Protest Committee will be posted to inform boats under rule 61.1(b) on the [Official Notice Board](#).
- 16.3 Hearings will take place at 1900 EDT, Tuesday July 26, 2022, either at PCYC or virtually.

17 SCORING

- 17.1 Solo/Single-Handed (SH), Double-Handed (DH) & Fully Crewed (FC) sailboats will race under following rating/handicap systems:

Multihull	GLMRA Rule applies
ORC	Single number system using time on time ratings
PHRF-LO	PHRF-LO Time on Time formula applies

- 17.2 Sailboats will be scored in their own classes.
- 17.3 The Organizing Authority reserves the right to adjust the scratch sailboat when converting the PHRF-LO Time on Distance to Time on Time based on the registrations received by the deadline. The Time-on-Time ratings will be published along with the division splits.

18 SAFETY REGULATIONS

- 18.1 [NP] Sailboats are encouraged to implement their own check-in process and with individuals ashore via phone email or other mechanism.
- 18.2 A sailboat withdrawing from the race shall wear her ensign and keep clear of other competitors.
- 18.3 [DP] The Race Committee shall be notified of a sailboat's withdrawal at the earliest possible opportunity on VHF Channel Canadian 71, at the following telephone number 1-866-462-8828, or at the email address of racecommittee@loor.ca.
- 18.4 Sailboats may check in with the Race Committee at any time during the race to advise the Race Committee of their position at 1-866-462-8828 or the email address of racecommittee@loor.ca .
- 18.5 Failure of a sailboat to make every reasonable effort, under the circumstances, to comply with SI 18.3, may result in protest by the Race Committee. The results of this hearing may be used by the Organizing Authority whether to accept future registrations by this sailboat or owner.
- 18.6 All sailboats racing shall be required to maintain a log of significant events,

mark rounding, calls to the Coast Guard, and engine on and off for charging only. This record must be submitted as per Notice of Race (NoR).

19 EQUIPMENT AND MEASUREMENT CHECKS

[NP] [DP] A sailboat may be inspected at any time during the period from the Mandatory Participants' Meeting until three hours after her finish. The Race Committee may, at the finish of the race, direct a sailboat to proceed directly to a designated location at Port Credit Yacht Club. A boat which fails to follow such directions, or which subsequently fails the inspection may be protested by the Technical Committee.

20 PRIZES

Prizes will be given as listed on the NoR or at www.loor.ca .

21 RISK STATEMENT

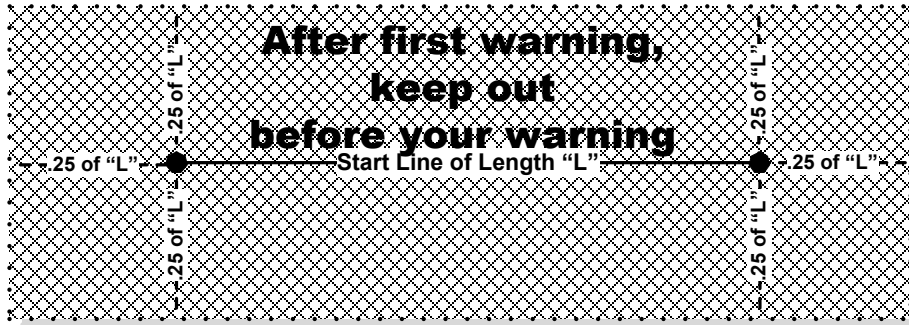
21.1 RRS 3 states: 'The responsibility for a boat's decision to participate in a race or to continue to race is hers alone.' By participating in this event each competitor agrees and acknowledges that sailing is a potentially dangerous activity with inherent risks. These risks include strong winds and rough seas, sudden changes in weather, failure of equipment, boat handling errors, poor seamanship by other boats, loss of balance on an unstable platform and fatigue resulting in increased risk of injury. Inherent in the sport of sailing is the risk of permanent, catastrophic injury or death by drowning, trauma, hypothermia, or other causes.

22 INSURANCE

22.1 [DP] Each participating sailboat shall be insured with a valid third-party liability insurance policy with a minimum cover of \$2,000,000 CAD per event for Canadian boats and an adequate level of third-party liability insurance applicable in Canadian and US waters for non-Canadian sailboats.

Diagram 1

The Starting Area



The Starting Area

After the first warning signal for a race and prior to her warning signal, a sailboat shall keep clear of the starting area that extends one-quarter of the length of the starting line ahead of and behind the starting line. It shall also extend one-quarter of the length of the starting line past either end of the starting line

See SI 12

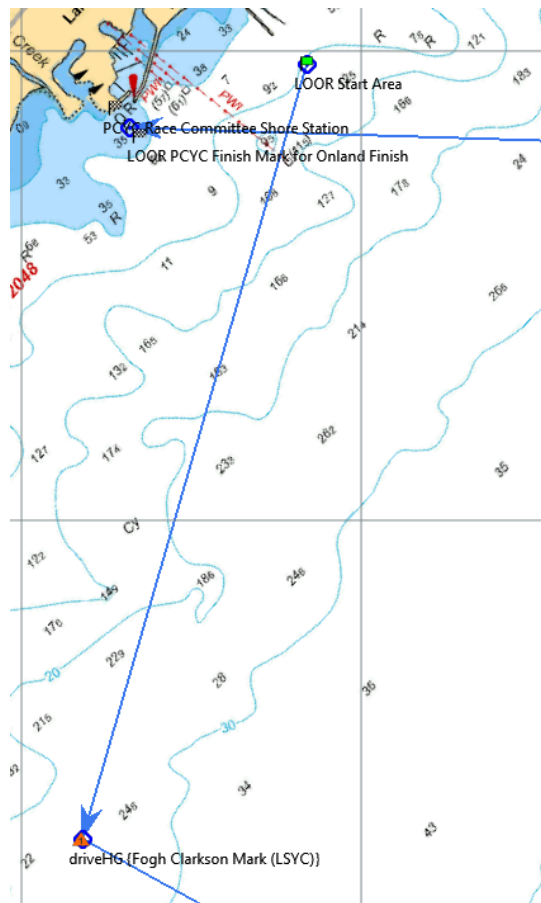
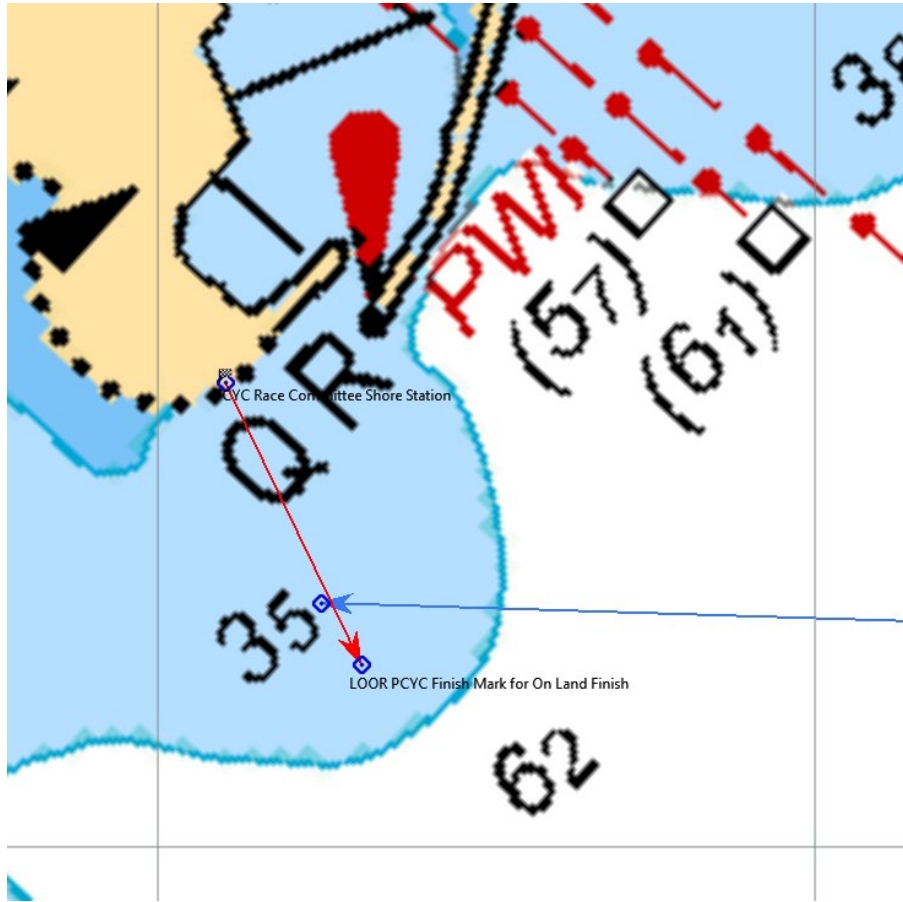


Diagram 2 The Finish



- For a description and locations of the marks, see SI 10.
- For details of the Finish, see SI 13

Further Information

Supplementary Information, including checklists, map to using the Registration & Web Site, and course diagrams is available at: <https://yachtscoring.com/emenu.cfm?eid=14881> under Documents & Forms and does not constitute a rule.

ORGANIZING AUTHORITY CONTACTS		
LO300 Registration	registrar@loor.ca	www.loor.ca
LO300 Race Committee	racecommittee@loor.ca	www.loor.ca
LOOR Safety	safety@loor.ca	www.loor.ca
LOOR	info@loor.ca	www.loor.ca
GLSS	glss@loor.ca	www.solosailors.org
PCYC		www.pcy.net
HANDICAP SYSTEMS CONTACTS		
GLMRA	racecommittee@loor.ca	
ORC – Ontario District	can3005@aol.com	www.orc-canada.org
PHRF-LO	Contact your club's PHRF-LO Handicapper	www.phrf-lo.org