



Dunedin Boat Club
 Organizing Authority
 49 Marina Plaza, Dunedin, Florida 34698



2022 Gulf Series – Winter Regatta
January 29, February 26, March 19 - 2022

Sailing Instructions (SI)

The notation '[NP]' in a rule of the sailing instructions (SIs) means that a boat may not protest another boat for breaking that rule. This changes RRS 60.1(a).

1 RULES

- 1.1 The event is governed by the rules as defined in *The Racing Rules of Sailing*.
- 1.2 The races will be in accordance with the West Florida PHRF Inc. Class Rules.

2 CHANGES TO SAILING INSTRUCTIONS

- 2.1 Any change to the sailing instructions will be posted before 0800 on the day it will take effect, except that any change to the schedule of races or course will be posted by 2000 on the day before it will take effect. Said changes will be posted on the Official Notice Board located at Yacht Scoring:
https://www.yachtscoring.com/administration/admin_main.cfm?Event_ID=14926

3 COMMUNICATIONS WITH COMPETITORS

- 3.1 Notices to competitors will be posted on the official notice board located at Yacht Scoring;
https://www.yachtscoring.com/administration/admin_main.cfm?Event_ID=14926
- 3.2 Race Committee will make every effort to email and or text competitors and crew (as appropriate) using the cell phone number in their registration.
- 3.3 On the water, the race committee intends to monitor and communicate with competitors via VHF radio on channel 72.
- 3.4 [DP] From the first warning signal until the end of the last race of the day, except in an emergency, a boat shall not make voice or data transmissions and shall not receive voice or data communication that is not available to all boats.

5 SCHEDULE OF RACES

Date	Winter Regatta
Skippers Meeting	January 28, 1830 hrs. EDT at DBC
Race day 1	1/29/22
Race day 2	2/26/22
Race day 3	3/19/22

6 CLASS FLAGS

Spinnaker	Pennant #1
Non-spinnaker	Pennant #2
Racer-cruiser	Pennant #3
Cruiser	Pennant #4
Multi-hull	Pennant #5



7 RACING AREA

- 7.1 The Racing Area will always default to area called “**West GULF SIDE Course**” displayed in Addendum A.

8 COURSES

- 8.1 The diagram(s) in SI Addendum A show(s) the course, including the approximate mark locations. All marks are to be passed to port.
- 8.2 Course MARKS will be displayed on a white board mounted on the stern of the Signal vessel using the mark placement LETTERS as noted on Addendum A
- 8.3 If there is no Signal vessel on station; start/finish may be between an orange buoy and a yellow cylinder.
- 8.4 Rule 90.2c applies: changes to the course can be made on the water via communications on VHF Channel 72

9 MARKS

- 9.1 The Marks of the course will be yellow cylinder.
- 9.2 Finish Pin will be a Yellow Cylinder

10 THE START

- 10.1 Races will be started using RRS 26 with a courtesy alert made one minute before the 1155 hrs, five (5) minute warning signal.
- 10.2 During the Class starting sequence, boats whose warning signal has not been made shall stay clear of those in their starting sequence.
- 10.3 A boat that does not start within four (4) minutes after her starting signal will be scored Did Not Start without a hearing. This changes RRS A5.1 and A5.2.

11 CHANGE OF THE NEXT LEG OF THE COURSE

- 11.1 To change the next leg of the course, the race committee will lay a new mark (or move the finishing line) and remove the original mark as soon as practicable. When in a subsequent change a new mark is replaced, it will be replaced by an original mark.

12 THE FINISH

- 12.1 The finish line will be between a staff displaying a blue flag on the port side of the Signal vessel and the course side of a finish mark (yellow cylinder)
- 12.2 If the race committee is absent when a boat finishes, she shall report her finishing time, and her position in relation to nearby boats, to the race committee at the first reasonable opportunity.

13 PROTEST and REQUEST FOR REDRESS

- 13.1 It is fully hoped that all protest situations will be resolved on the race course.
- 13.2 Anyone planning to protest or request redress must notify the Race Committee by VHF Channel 72 marine radio **immediately** after they have crossed the finish line.
- 13.3 Protest forms are on the bulletin notice board at the Dunedin Boat Clubhouse. They are also available at the Yacht Scoring web site. They must be filled out and presented to the Race Chairperson in person or by email attachment by 2000 hrs. the day of the race.



- 13.4 Notice will be called and emailed to competitors by the Race Committee Chairperson within 24 hours informing them of the time and place for a hearing.

14 TIME LIMITS [AND TARGET TIMES]

- 14.1 If no boat has passed the first mark within ninety (90) minutes of the first start the race will be abandoned.

15 SCORING

- 15.1 All Races will be scored on Yacht Scoring using Time on Time.
- 15.2 Each race date will consist of a minimum of one (1) race. Should there be more than 1 race in a day, the overall score for that day will be counted.
- 15.3 Two (2) race dates are required to constitute a Regatta
- 15.4 Each regatta, consisting of Three (3) race dates each will be scored as an individual regatta
- 15.5 Each race date requires three (3) confirmed boats racing to start. Race Committee will confirm by 2000 hrs. on the Friday preceding the race date, their intent to race.
- 15.6 If Race Committee cannot secure a vessel to serve as Signal, races for that race date may be cancelled. Race dates will not be made up.

16 SAFETY REGULATIONS

- 16.1 Before the warning signal, boats shall sail by the stern of the Signal vessel on starboard tack, or contact the Race Committee on VHF 72 and hail her sail number. Race Committee will acknowledge her sail number.
- 16.2 [DP] A boat that retires from a race shall notify the race committee at the first reasonable opportunity.

17 OFFICIAL VESSELS

- 17.1 Signal vessel will be identified by displaying the official Race Committee flag.

18 PRIZES

- 18.1 Awards for this Regatta will be given for first, second and third place per qualified class. Said awards will be made at the Skipper's meeting at the subsequent Regatta within the Gulf Series that precedes that Regatta's first race date. Example, Winter Regatta awarded at Skipper's meeting of the Fall Regatta
- 18.2 The Dunedin Boat Club's BOAT OF THE YEAR ("BOTY") goes to the DBC member competitor with the lowest cumulative score in the Gulf (6-race) Series and will be awarded at the DBC Annual Change of Watch ceremony.
- 18.3 Race Committee may present additional awards at their discretion.

18 RISK STATEMENT

- 18.1 RRS 3 states: 'The responsibility for a boat's decision to participate in a race or to continue to race is hers alone.' By participating in this event each competitor agrees and acknowledges that sailing is a potentially dangerous activity with inherent risks. These risks include strong winds and rough seas, sudden changes in weather, failure of equipment, boat handling errors, poor seamanship by other boats, loss of balance on an unstable platform and fatigue resulting in increased risk of injury. **Inherent in the sport of sailing is the risk of permanent, catastrophic injury or death by drowning, trauma, hypothermia or other causes.**

Competitors will abide by all the rules, regulations and documents that will govern this Series including safety related measures required by any Governmental emergency order(s) issued as a result of any healthcare orders by Federal, State, or Local Governments. **Competitors voluntarily assume the risks associated with communicable diseases including but not limited to the COVID-19** All county related



Dunedin Boat Club
Organizing Authority
49 Marina Plaza, Dunedin, Florida 34698



guidelines, ordinances and information pertaining to COVID-19 can be found via the following link:
<https://covid19.pinellascounty.org>

19 INSURANCE

- 19.1 Each participating boat shall be insured with adequate insurance from a valid third-party liability insurance company adequate to participate in these events.
- 19.2 Competitors will be expected to complete the insurance acknowledgment within their Yacht Scoring registration

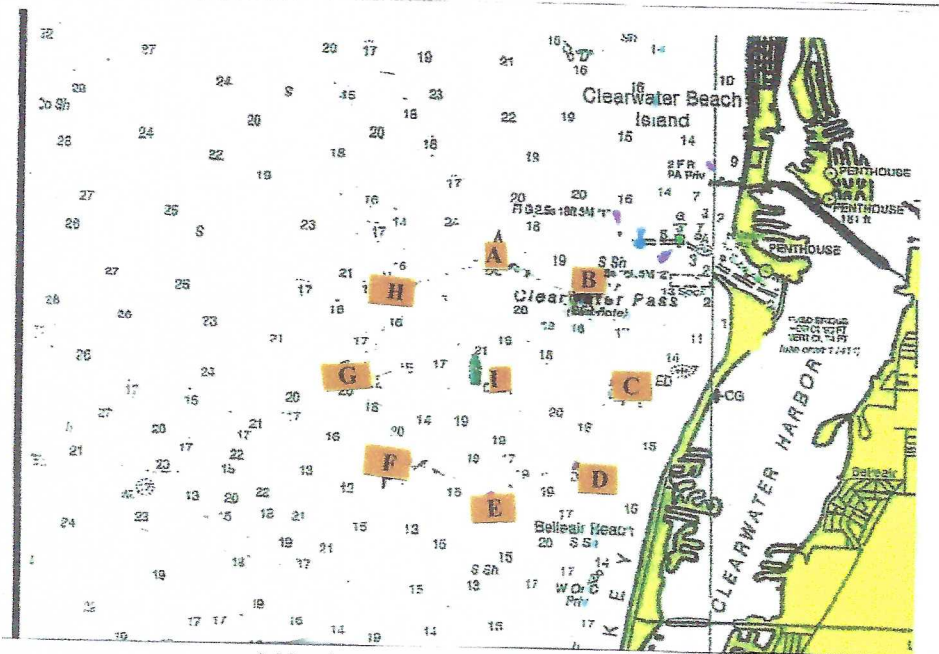


SI ADDENDUM A

RACE COURSE

A1 West GULF SIDE Course

A1.1



Addendum A 2022 West GULF SIDE Course

Mark #	Lat	Long
A	27 58.0 N	082 52.0 W
B	27 57.7 N	082 51.2 W
C	27 57.0 N	082 50.9 W
D	27 56.3 N	082 51.2 W
E	27 56.0 N	082 52.0 W
F	27 56.3 N	082 52.8 W
G	27 57.0 N	082 53.1 W
H	27 57.7 N	082 52.8 W
I	27 57.0 N	082 52.0 W

- Courses will be signaled by mark letters and in the order in which they are to be rounded.
- Leave all marks to port.
- Mark coordinates are approximate and are the same ones used for the 2020 Dunedin Cup.
- The Pin end of the starting line may be used as a mark of the course.
- If a Signal Vessel is on station, the pin end of the Start/Finish line shall be passed to port just as all other marks.

• SHOULD there be NO SIGNAL vessel, a gate comprised of two orange buoys, one at the pin end and one in place of the Signal vessel shall be used. In that case, one can go through the gate, between the two buoys, and round either end to head for the next mark. When going through the finish, they will announce their GPS finish time on channel 72.