



# 2022 SPINNAKER CUP



**Encinal Yacht Club, Alameda, CA  
and Monterey Peninsula Yacht Club, Monterey, CA  
Saturday, May 28, 2022  
San Francisco To Monterey  
California**

## **SAILING INSTRUCTIONS**

### **1 RULES**

- 1.1 This event will be governed by the rules as defined in *The Racing Rules of Sailing* (RRS). From the hours of sunset to sunrise, Appendix RV, REDUCED VISIBILITY RACING RULES, applies.  
[https://www.sailing.org/tools/documents/2019AppendixRV30112019.docx-\[25856\].pdf](https://www.sailing.org/tools/documents/2019AppendixRV30112019.docx-[25856].pdf)
- 1.2 The COLREGS Navigation Rules will apply including Inland Navigation Rule 9 - A sailing vessel shall not impede the passage of a vessel which can safely navigate only within a narrow channel or fairway. If a vessel or the Coast Guard reports a violation of these Navigation Rules, the race committee may protest the boat. Evidence by report need not be provided in person to be considered by the protest committee. The Encinal Yacht Club (EYC) and Monterey Peninsula Yacht Club (MPYC) will cooperate with and provide information relevant to any investigations of a violation of the Navigation Rules to the US Coast Guard, or other government authority.

### **2 NOTICES TO COMPETITORS AND CHANGES TO SAILING INSTRUCTIONS**

- 2.1 Notices to competitors prior to the start will be posted on the CORW Series website (official notice board) no later than 12 hours before they are to take effect. The NOR, SIs, and amendments thereto will be posted online at [www.offshoreraceweek.com](http://www.offshoreraceweek.com).

### 3 RACE SCHEDULE AND CLASS FLAGS

- 3.1 The first warning signal is scheduled for 1100 hours on Saturday, May 28.
- 3.2 The expected starting order and class flags are as follows. Class flags will be international code flags.

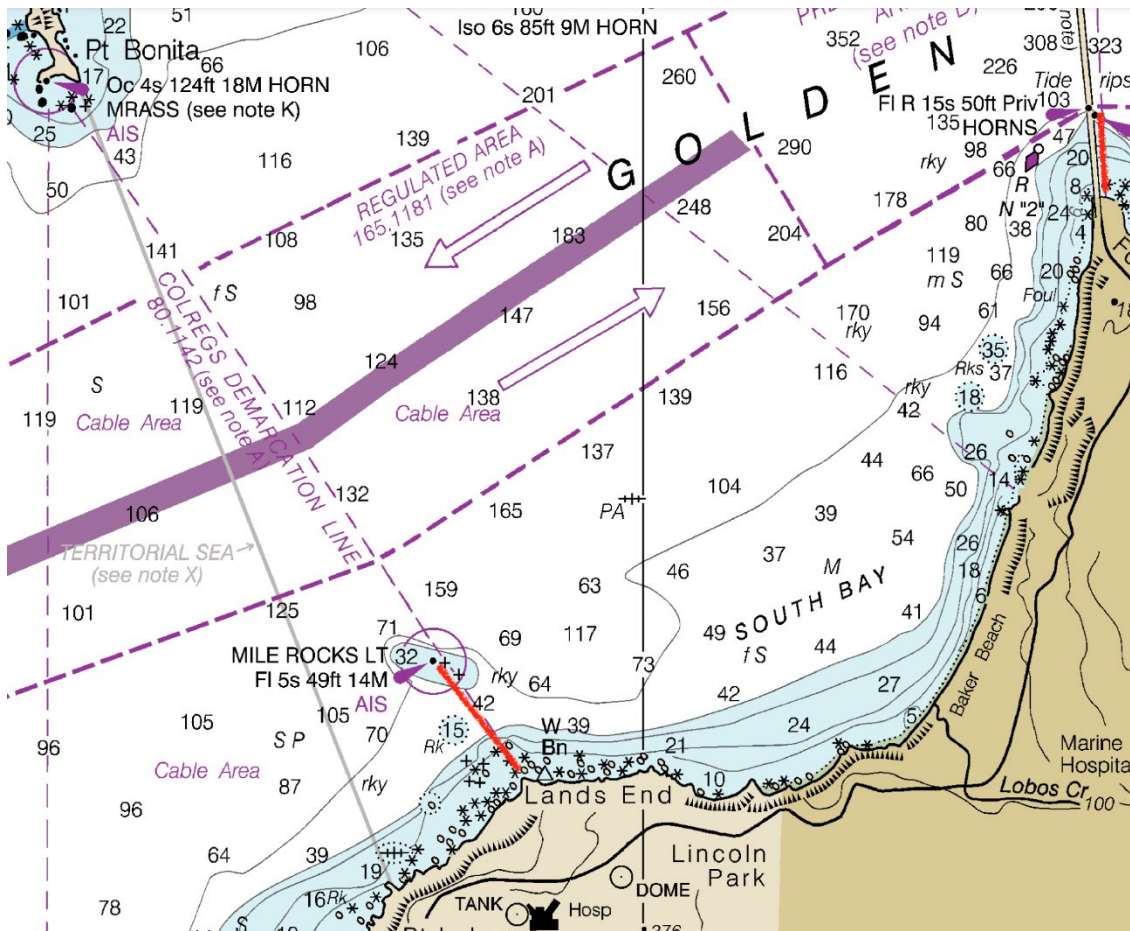
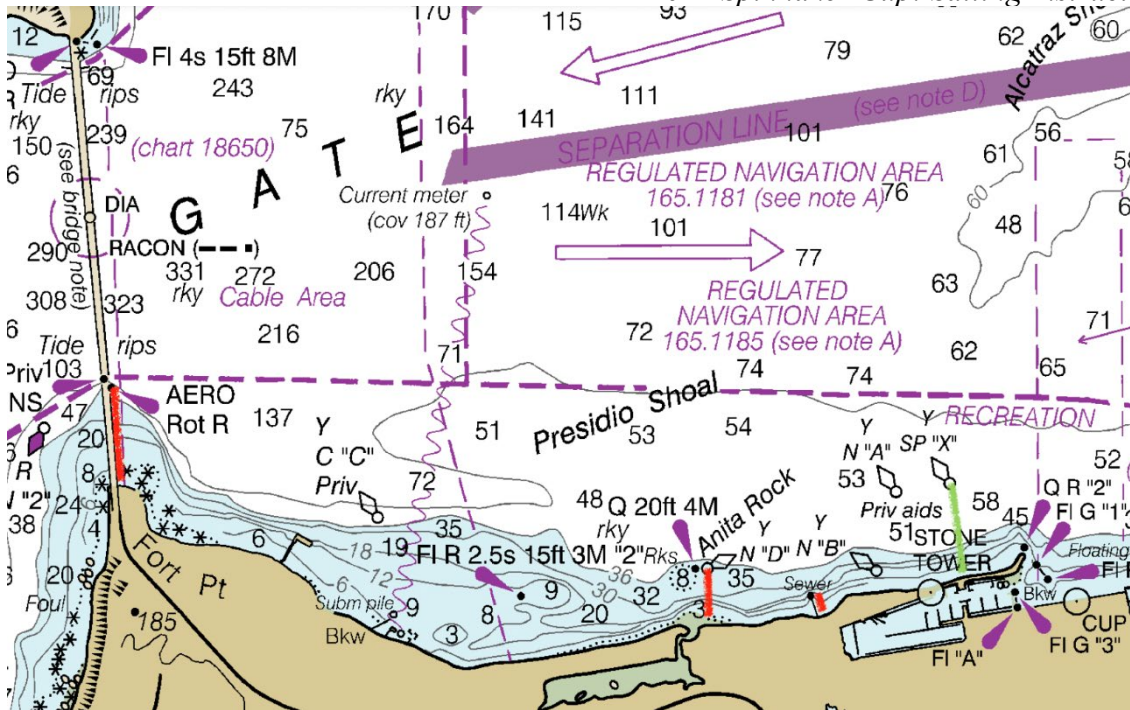
Class	Class Flag
PHRF-A	Code Flag A
PHRF-D	Code Flag D
PHRF-E	Code Flag E
PHRF-F	Code Flag F
PHRF-G	Code Flag G
PHRF-H	Code Flag H
MULTI	Code Flag M

- 3.3 PHRF Class assignments can be found on the California Offshore Race Week website.  
<https://offshoreraceweek.com/entry-list>

### 4 RACING AREA AND COURSE

- 4.1 The start will be located in the San Francisco Bay in the area adjacent to the Golden Gate Yacht Club located near Marina Green, west of Ft. Mason on the San Francisco City Front. Specifically, the starting line will be between buoy “x” of the Golden Gate Yacht Club and the orange placard on the GGYC race deck.
- 4.2 **Course 1** will be from the starting line to the finish line off Municipal Wharf 2 in Monterey.
- 4.3 **Course 2** will be from the starting line to the Golden Gate Main Ship Channel Buoy R8, Fl R2.5s whistle (approx. 6 NM at 242 degrees from the Golden Gate Bridge), leaving the buoy to port, then to the finish line off Municipal Wharf 2 in Monterey.
- 4.4 On both courses, for safety reasons, boats shall not pass through each of the lines bounded by the following:
  - a.) The south tower of the Golden Gate Bridge, and the closest point ashore.
  - b.) Mile Rock, and the closest point ashore.
  - c.) Anita Rock, and the closest point ashore.
  - d.) Vertical 'H' beam off Water Quality Control Plant west of Saint Francis Yacht Club and the closest point ashore.
  - d.) Any rock visible at mean lower low water adjacent to the Marin County or San Francisco shorelines, and the closest point ashore.

2022 Spinnaker Cup: Sailing Instructions



4.5 The course to be sailed will be designated by numeral placards displayed from the GGYC race deck.

## 5 PRE-START CHECK-IN

- 5.1 All boats shall check-in with the race committee on USA VHF 1065 (OLD 65A) between the hours of 1000 and 1055 using the boat's primary fixed radio with masthead antenna. This communication is required to verify proper radio functionality and will include questions about the number and names of crew on board. **If there has been any change from the online registration, boats will be asked to switch to VHF USA 78 to provide the new information.** Check-in is not complete until a boat receives confirmation from the race committee. **Failure to complete this communication successfully shall result in a score of DNC.** This changes RRS 63.1 and A5.
- 5.2 Random inspections may be made before the start for compliance with the Safety Equipment Requirements. If selected, the RC will come along-side the boat and request items to be shown for inspection. Boats that do not pass the inspection will be protested by the race committee. Penalties will be at the discretion of the protest committee, up to and including DSQ. This changes RRS 64.1.

## 6 THE START

- 6.1 The warning signal for each succeeding class will be the start signal for the preceding class.
- 6.2 The starting line will be between buoy "x" off of Golden Gate Yacht Club and the orange placard on the GGYC race deck.
- 6.3 After the start, all boats are requested to change to VHF 16. Once boats are within 2 miles of the finish, change back to USA VHF 1065 (OLD 65A). Roll calls may be conducted after dark at the discretion of the RC to check on safety and approximate locations of any boats that have not finished. The RC will hail on both VHF 16 and VHF 1065 (OLD 65A).

## 7 PRE-FINISH CHECK-IN

- 7.1 Approximately 2 nm prior to their finish, all boats shall check-in with the race committee using either USA VHF 1065 (OLD 65A) or cellular phone number 831-236-0109.
- 7.2 All boats shall contact the race committee using USA VHF 1065 (old 65A) immediately after receiving their audible finish signal and state the vessel name and sail number. Your transmission will be acknowledged by race committee on shore. This is particularly important for boats finishing in the dark.
- 7.3 After crossing the finishing line, all boats that have reserved a berth in Monterey Marina shall switch to VHF 1005 (OLD 5A) for pilot guidance to their slip.
- 7.4 Random inspections may be made after the finish for compliance with the US Sailing Safety Equipment Retirements. If selected, the RC will contact the boat at the finishing line on USA VHF 1065 (OLD 65A) and arrangements will be made for the inspection. Boats that do not pass the inspection will be protested by the race committee. The same boat may be selected at both the start and the finish.

## 8 THE FINISH

- 8.1 The finish line will be between the end of Municipal Wharf 2 in Monterey and a fixed yellow drum with a continuous white light on it, located approximately 750 feet to the northeast. The approximate location of the mark is: Latitude N 36° 36' 23.83", Longitude W 121° 53' 14.25". Skippers are advised to check their charts and on-board navigation instruments to verify the exact location of the finish line. Skippers should also be on the lookout for fishing vessels anchored or moored in close proximity to the finish line. Illustration A is provided for reference, not for navigation.

## **9 PENALTY SYSTEM**

- 9.1 The Scoring Penalty, RRS 44.3, will apply. The penalty will be 10 minutes added to the boat's finish time. A yellow flag is not required, but a boat taking a penalty shall notify the race committee at the finish line. This changes RRS 44.3.

## **10 TIME LIMIT**

- 10.1 The time limit for the race will be 1600 hours on Sunday, May 29.
- 10.2 All boats not finishing by 1200 hours on Sunday, May 30 shall take their own finish time and report it to the race committee by posting the boat's name and finish time on the bulletin board located at the Monterey Peninsula Yacht Club, Municipal Wharf 2, Monterey, CA, **and** by calling 831-236-0109.

## **11 PROTESTS AND REQUESTS FOR REDRESS**

- 11.1 The protest time limit is 2 hours after the protesting boat finishes. Protests or requests for redress may be delivered to a member of the Race Committee. Notices will be posted within one hour after the receipt of a protest or request for redress on the Notice Board at the MPYC. The time and place of the hearing will be noted there.

## **12 SCORING**

- 12.1 After the last sentence of RRS Appendix A3 add: Unless the rules of the handicap system make a different arrangement, the corrected time for a boat will be rounded to the nearest second, .5 seconds rounding up to the next higher integer.

## **13 RADIO COMMUNICATIONS**

- 13.1 The race committee may broadcast information about the day's racing, and OCS boats, on USA VHF 1065 (OLD 65A). The failure of any boat to hear the hail, the hail of some but not all OCS boats, the untimely hail of some or all OCS boats or failure to hail any or all boats shall not be grounds for granting redress. This changes RRS 62.1.

## **14 PRIZES**

- 14.1 Trophies will be awarded to the top finishers in each class, with the number of trophies depending on the number of entries per class. The trophy presentation will be held at MPYC at 1200 hours, or as soon as practicable on Sunday, May 29. The time will be posted on the Spinnaker Cup Bulletin Board at MPYC.

## **15 DISCLAIMER OF LIABILITY**

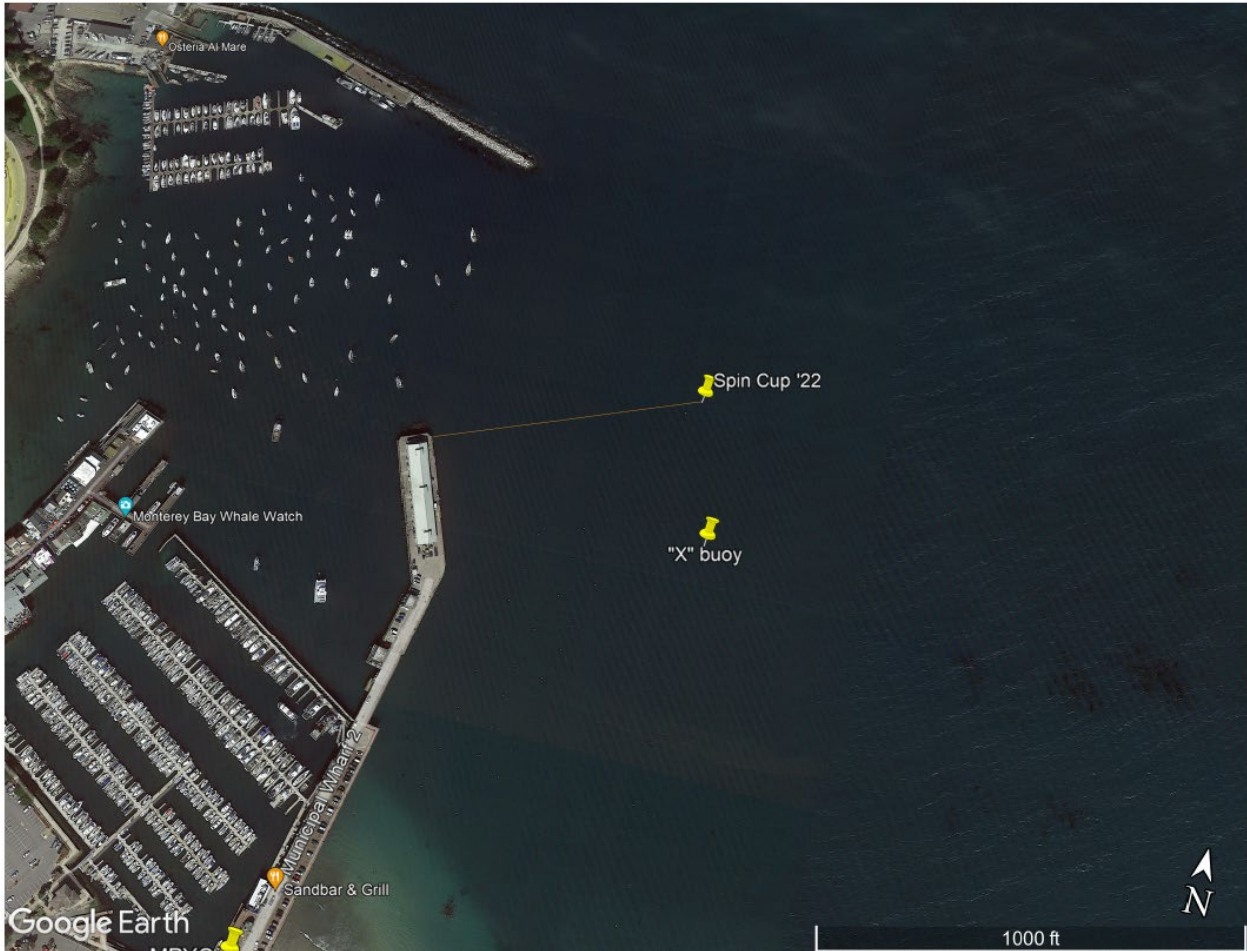
- 15.1 Competitors participate in the regatta entirely at their own risk. See RRS 3, Decision to Race. The organizing authority will not accept any liability for material damage or personal injury or death sustained in conjunction with or prior to, during, or after the regatta.

### **Co-Regatta Chairs:**

Brent Draney, EYC, (510) 910-1045, [vicecommodore@encinal.org](mailto:vicecommodore@encinal.org)

Jeff Kise MPYC, (831) 236-0109, [spinnakercup@mpyc.org](mailto:spinnakercup@mpyc.org)

### Illustration A: The Finish Line



(chart for reference only, not for navigational purposes).