



OUTER LIGHT CLASSIC REGATTA July 24, 2022 Sailing Instructions

1. ORGANIZING AUTHORITY

The Organizing Authority for this regatta is North Cove Yacht Club, 111 Sheffield Street, P.O. Box 298, Old Saybrook, CT 06475.

2. RULES

- 2.1 The races and will be governed by the *Racing Rules of Sailing 2021-2024 (RRS)*, the *Notice of Race* and these *Sailing Instructions*. (Special attention is drawn to Part 1- Fundamental Rules of the Racing Rules of Sailing.)
- 2.2 Changes to the RRS will be noted with each instruction that changes a rule. **CHANGES TO THE RULES**
- 2.3 The Race Committee (RC) will broadcast on VHF Channel **69** and respond to “North Cove Yacht Club Race Committee” when possible.
- 2.4 Radio communications by the RC are a matter of courtesy. Only the RC may request redress for an issue arising from such communications. This changes RRS 62.1(a).
- 2.5 APPENDIX V, Sections A and B shall be in effect.
- 2.6 APPENDIX V Changes: The first two sentences of RRS 44.1 to: “A boat may take a One-Turn Penalty when she may have broken a rule of Part 2 or rule 31 while racing. However, when she may have broken a rule of Part 2 while in the zone around a mark other than a starting mark, her penalty shall be a Two-Turns Penalty.”
- 2.7 ECSA PHRF class rules will apply to all boats sailing with PHRF handicaps. A valid ECSA PHRF handicap certificate is required for a boat to race in a handicap class.

3. SAIL NUMBERS

- 3.1 Conformance to Appendix G is not required. *This changes RRS 77.*

4. NOTICES TO COMPETITORS

- 4.1 Notices to competitors will be posted on the NCYC Notice Board and may be transmitted on VHF Channel 69 and may be posted on the NCYC website (www.northcoveyc.com).



5. CHANGES TO SAILING INSTRUCTIONS AND SCHEDULE

- 5.1 Changes to the schedule will be posted on the official notice board by 2000 on the day before they take effect, and may be posted on the NCYC website.
- 5.2 Changes to the Sailing Instructions will be posted on the NCYC official notice board before 0800 on the day that they take effect.
- 5.3 Changes to the Sailing Instructions may be announced on VHF Channel 69 before the 1st warning.

6. RACE SCHEDULE

- 6.1 Signals made ashore will not be employed.

7. CHECK-IN AND RETIREMENT

- 7.1 All boats shall pass close by the RC signal boat on the side opposite the Starting Line to Check-in prior to the First Warning signal by hailing and being acknowledged.
- 7.2 A boat that retires from a race or that has checked-in and decides not to race prior to its start shall notify the Race Committee as soon as possible by the best means available.

8. CLASSES, FLAGS AND STARTING ORDER

- 8.1 Classes will be defined on the Entry List and assigned based on conditions of entry in the Notice of Race.
- 8.2 The class flag for each class will be the numeral pennant corresponding to the class number assigned on the Entry List.
- 8.3 Classes will start in class number order, 1, 2, 3, etc., unless otherwise specified by a change to the Sailing Instructions.

9. THE START AREA

- 9.1 The RC will rendezvous west of the mouth of the Connecticut River. Based on wind and weather conditions, the RC may relocate to facilitate a better start. The RC will announce her position on VHF Channel 69 when on station.



10. COURSES

- 10.1 The Courses will be either Around the Buoys or Predefined.
- 10.2 **Around the Buoys** course will be signaled by a horizontal display of letters on the RC Signal Boat. The marks shall be rounded in the sequence displayed, reading from left to right. Marks within a circle are to be kept to Starboard. The numeral two (2) at the bottom of the display signifies the course shall be sailed twice around then to the finish.
- 10.3 **Pre-Defined Courses** will be Windward – Leeward or Triangle.
 - 10.3.1 **Course 4** is a Pre-Defined Windward Leeward course with 4 legs. Windward–Leeward–Windward–finish. See Attachment A.
 - 10.3.2 **Course 2** is a Pre-Defined Windward Leeward course with 2 legs. Windward--Finish. See Attachment A.
 - 10.3.3 **Course T** is a 45-degree Triangle–Windward---Leeward Course. Boats will sail to a Windward Mark, then round the Wing mark, to Leeward mark, back to Windward and then to the Finish. See Attachment A.
 - 10.3.4 The Windward Mark position will be designated by Range in NM and Magnetic Bearing from the RC Signal Boat.
 - 10.3.5 The Leeward Mark will be positioned approximately 0.1 NM windward of the Start Line.
 - 10.3.6 Courses are to be sailed by leaving all marks to the same side as the starting pin.

11. MARKS

11.1 The marks used to designate **Around the Buoys** courses are as follows:

A	Inflatable buoy Start/Finish Pin
B	Bell R "8C", Fl. R 4s near Six Mile Reef
C	Gong RG "W", West end of Long Sand
D	Bell R "2", fl R 4s, Cornfield Shoal
J	RG Nun, "E", East end of Long Sand Shoal
L	Bell R "2PG", Plum Gut
M	RW Whistle "PI", N of Plum Island
X	Inflatable buoy. R & B from RC
Y	Inflatable buoy. R & B from RC



12. NOTE RESTRICTIONS: Government buoy R "8" (Fl 4 sec Bell) southeast of the Connecticut River must be honored. Participants are cautioned that all charted depths indicated on Long Sand Shoal should be considered approximate.

13. THE START AND FINISH LINE

13.1 The START and FINISH LINE will be between a staff displaying an orange flag on the RC signal boat and Mark A.

13.2 The starting area will be a square behind the starting line the sides of which are equal to the length of the starting line. Boats not starting shall keep clear of the starting area.

13.3 The Starting sequence will be in accordance with *RRS 26*.

14. RECALLS

14.1. As a courtesy the Race Committee will endeavor to announce the names and/or sail numbers of Over Early Boats (OCS) by hailing and/or on VHF Channel 69.

15. CHANGING AND SHORTENING COURSE

15.1 A change or shortening of course will be announced on VHF Channel 69 in addition to signals as described in *RRS 32* and *33*.

16. TIME LIMIT

16.1 The Time Limit will be 1630 hours for all classes.

16.2 A boat failing to finish within the time limit will be scored TLE even if one or more boats of the same class have finished within the time limit. TLE score is finishers plus 1. *This changes Rule 35.*

17. PROTESTS AND REQUESTS FOR REDRESS

17.1 Boats intended to protest or seek redress shall inform the RC at the first reasonable opportunity after she finishes and when applicable the identity of the boat being protested.

17.2 Protest forms are available at the Clubhouse.

17.3 The time limit for protests and request for redress is one hour after the Race Committee boat has docked at NCYC.

17.4 Notices of hearings shall be posted on the official notice board within 30 minutes of expiration of the protest time limit.



18. SCORING

- 18.1 The finish places of boats in handicap classes shall be calculated using Time on Time.
- 18.2 One race completed will constitute a series. There are no throw outs.
- 18.3 Ties will be broken by combined Corrected Times. This changes Appendix A8.

19. PRIZES

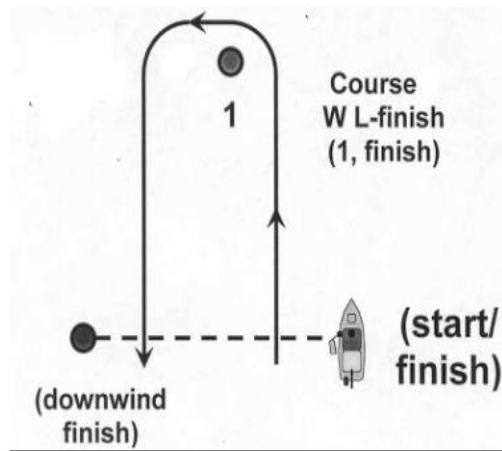
- 19.1 Prizes will be presented for the first three places in each class.

20. DISCLAIMER OF LIABILITY

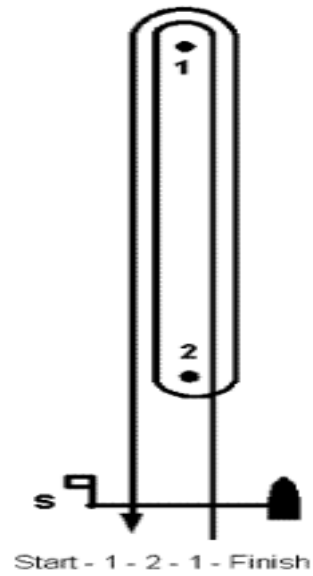
- 20.1. Competitors participate in the series entirely at their own risk, see Rule 4, Decision to Race. The organizing authority will not accept any liability for material damage or personal injury or death sustained in conjunction with, or prior to, during, or after the event.

Attachment A (Race Courses 2, 4, & T)

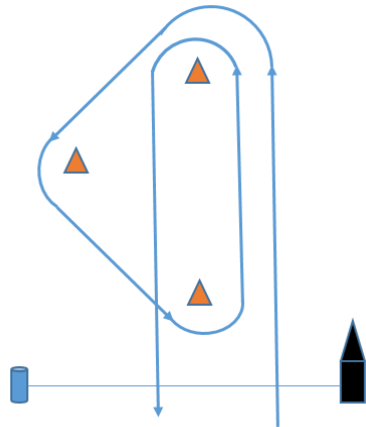
Course 2



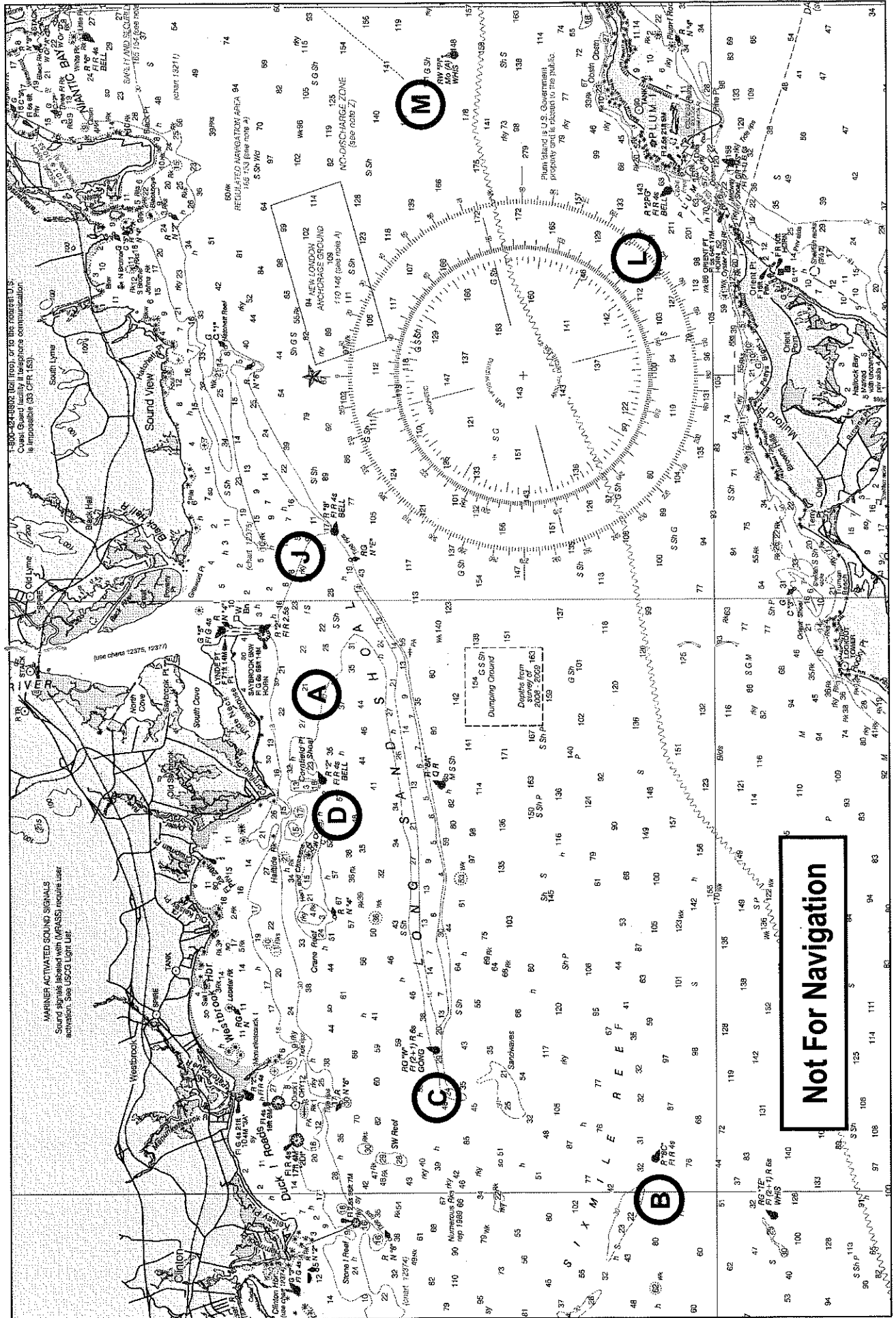
Course 4



Course T



NORTH COVE YACHT CLUB Outer Light Classic Regatta Racing Chart



Not For Navigation