



2022 GTYC MELGES 24 RED 8 REGATTA

SAILING INSTRUCTIONS

JUNE 25TH – WEST GRAND TRAVERSE BAY – TRAVERSE CITY MI

ORGANIZING AUTHORITY & HOST: GRAND TRAVERSE YACHT CLUB

REGATTA CHAIRS: SCOT ZIMMERMAN & TOM ROOP

RACE MANAGEMENT CONTACT: JORDAN OWEN, JO@GTYC.ORG

1. Rules –

1.1 – The regatta will be governed by the rules as defined in The Racing Rules of Sailing.

1.2 – The USSailing Prescription to Rule 63.4 will not apply. The USSailing Prescriptions are available at www.ussailing.org/.

1.3 The Racing Rules will be changed as follows.

a) Race Signal AP – when displayed ashore, ‘one minute’ is replaced by ‘thirty minutes’.

b) 44.1– the ‘Two-Turns Penalty’ is replaced by the ‘One-Turn Penalty’, except a situation where RRS Appendix V1 will apply.

c) App A2 - A boat’s series score will be the total of her race scores (no throwouts).

d) App A4.2 – A boat that does not finish (DNF) a race or retires after finishing (RAF) shall be scored one more point than the last boat to finish in that race.

e) RRS Appendix T will apply, except the penalty in RRS T1(b) is changed to 20% if taken before an arbitration meeting

2 - Notices To Competitors — will be posted on the official notice board located in the foyer of GTYC.

3 - Changes to Sailing Instructions — Any change to the sailing instructions will be posted before ninety (90) minutes prior to the scheduled warning signal on the day it will take effect, except that any change to the schedule of races will be posted by 1800 hrs or the end of protest time, whichever is later, on the day before it will take effect.

4 - Signals Made Ashore —

4.1 - Signals made ashore will be displayed from the GTYC flag pole and communicated via VHF Ch 69.

4.2 - When Flag AP is displayed ashore, ‘1 minute’ is replaced by ‘not less than thirty (30) minutes’ in RRS. Race Signal AP. This changes RRS Race Signal AP.

5. Schedule

<i>Day</i>	<i>Time</i>	<i>Event</i>
Friday	1800-2000 hrs	Registration
Saturday	1000-1100	Registration
	1100	Optional Competitors Meeting
	Noon	Earliest possible First Warning Signal, with as many races as practical to be sailed consecutively
	1630	No Warning Signal Past This Time Awards to Follow

5.1 - Up to six (6) races are scheduled.

5.2 - Races will be sailed back to back with very little time in between. Stay close to the starting area when not racing.

6 - Class Flag — will be White.

7 - Racing Area — will be West Grand Traverse Bay in an area defined from Government Mark Red 8, one mile to the East, and one mile to the South.

8 - The Course — (see Attachment B)

8.1 - All courses will be four (4) leg Windward/Leewards. An offset mark may be used at Mark W and shall be rounded after rounding Mark W. A gate may be used at Mark L.

8.2 - On the first and last leg of the course, Mark L (s & p), if present, is not considered a mark of the course and may be passed on either side.

8.3 - All marks shall be left to port, except —

a - the finish mark which shall be left to starboard.

b - when there is a gate at Mark L, boats shall sail between the gate marks (Ls & Lp) from the direction of the previous mark and round either gate mark. (see Attachment C) If only one (1) mark is present it shall be rounded to port.

8.4 - Courses will not be shortened. This changes RRS 32.

9 - Marks —

9.1 - The windward mark will be specified by the RC prior to each race from the following:

- 1) *Green tetrahedron*
- 2) *Yellow tetrahedron*

3) *Orange tetrahedron*

The signal boat will post the windward mark color and compass heading prior to the warning signal. The mark color will also be broadcast as a courtesy on VHF 69

9.2 Gate marks Ls, & Lp will be *yellow/green inflatable balls*.

9.3 - The windward offset mark will be a *small yellow inflatable ball*.

9.4 - Leeward Changing marks, as in SI 11, a *3' Orange Ball* as the leeward mark. When Ls and/or Lp is changed there will be no gate.

9.5 - The start and finish mark will be a *4' orange cylinder*.

10 - The Start —

10.1 - The starting line will be between a staff displaying an orange/white flag on the RC Signal boat at the starboard end and the course side of the start/finish mark at the port end.

10.2 - AP down & General Recall down will be accompanied by the short blasts. This changes Race Signals AP & 1st Substitute.

10.3 - Individual and general recalls will be signaled in accordance with rule 29. The race committee intends to make an attempt to hail boats who have not started properly on VHF ch 69. The following are not grounds for redress: failure of committee to hail any or all boats; failure of committee to accurately hail one or more boats; failure of a boat to hear its hail; timeliness of the hail; or the order of boats within the hail.

11 - Change Of The Next Leg Of The Course – To change the next leg of the course, the race committee will lay a new mark (or move the finishing line) and/or designate an alternative set mark. Course Changes to a new windward mark will be signaled by repeated sound/horn and flag, with the flag color corresponding to the color of the new inflatable tetrahedron mark

12 - The Finish — The finishing line will be between a staff displaying a orange/white flag on the RC boat at the port end and the course side of the start/finish mark

13 - Penalty System — RRS 44.1 is changed so that the Two-Turns Penalty is replaced by the One-Turn Penalty.

14 - Time Limits and Target Times— this changes RRS 35.

14.1 - The time limit for any race will be 60 minutes for the first boat to finish.

14.2 - Boats not finishing within 12 minutes of the first boat to finish will be scored Time Limit Expired (TLE) and scored as below in 16.3.

14.3 - If no boat has passed Mark 1 within twenty (20) minutes, the race will be abandoned.

14.4 - The target time for all races will be thirty to forty (30 - 40) minutes. Failure to meet the target times will not be grounds for redress.

15 - Protests and Requests For Redress —

15.1 - Protests forms will be available in the Race Office adjacent to the GTYC lobby and shall be delivered within the protest time limit.

15.2 - The protest time limit is sixty (60) minutes after the RC Signal Boat docks. This time will be broadcast on VHF Channel 69 and posted on the official notice board.

15.3 - Notices will be posted within thirty (30) minutes of the protest time limit to inform competitors of hearings in which they are parties or named as witnesses. Hearings will be held in the Protest Room (Commodore's Room at GTYC or designated substitute) and will be heard by appointed judges. Judges may include those appointed to serve remotely via the Zoom multimedia communications application. A designated Deputy PRO will act as onsite proctor for the hearing and a technology aide may be utilized.

15.4 - (This changes RRS 66) On the last day of the regatta, a request for reopening a hearing shall be delivered - a) within the protest time limit if the party requesting reopening was informed of the decision on the previous day b) no later than thirty (30) minutes after the party requesting reopening was informed of the decision on that day.

16 - Scoring —

16.1 - Six races are scheduled and one race shall be completed to constitute a series.

16.2 - A boat's series score will be the total of her race scores. This changes App A2.

16.3 - A boat that does not finish a race (DNF), time limit expired (TLE), or retires after finishing (RET) will be scored one more point than the last boat to finish in that race. This changes RRS App A4.2

15 - CODE OF CONDUCT

15.1 Competitors shall comply with any reasonable request from any official, and shall not behave so as to bring the event or the sport into disrepute.

15.2 Competitors are expected to comply fully with RRS 2 at all times. Abuse or intimidation of other competitors, race officials, or officials of the host club will not be tolerated. All such incidents shall be reported to the Principal Race Officer. Repeated incidents by individuals or teams shall be reported to the protest committee and may be considered gross misconduct (a gross breach of sportsmanship).

15.3 When a competitor and/or crew is found to have committed an act of Gross Misconduct, the penalty shall be a scoring penalty equal to 40% of the entries in the race for each incident. Additionally, the competitor and/or boat that was responsible for the crew may not discard this race in the series.

15.4 Competitors shall not obstruct Race Management vessels as they conduct operations including setting marks, anchoring, and judging the start/finish line. Repeated incidents by individuals or teams shall be reported to the protest committee.

16 - SAFETY REGULATIONS — Signal Boat cell number is 616-450-6746

16.1 - A boat that retires from a race or leaves the racing area is requested to notify the RC on VHF Ch 69, by cell phone, or by hailing any RC boat. A boat that subsequently returns to the racing area is asked to check in with the RC Signal Boat as in 17.1 or via VHF Ch 69. There will be no penalty for not checking out or back in.

16.2 — ***The primary communication for all medical emergencies is 911***

16.3 - Weather will be monitored via the following applications: "My Radar", "Storm - Weather Radar", & "My Lightning Tracker". Decisions regarding racing by the OA and PRO will be based on these applications.

19 - Radio Communication — A boat shall neither make radio transmissions while racing nor receive radio communications not available to all boats. VHF Channel 69 will be monitored by the RC and they will only respond to competitors who identify themselves.

20 - Prizes — will be awarded to crews placing 1st through 3rd overall.

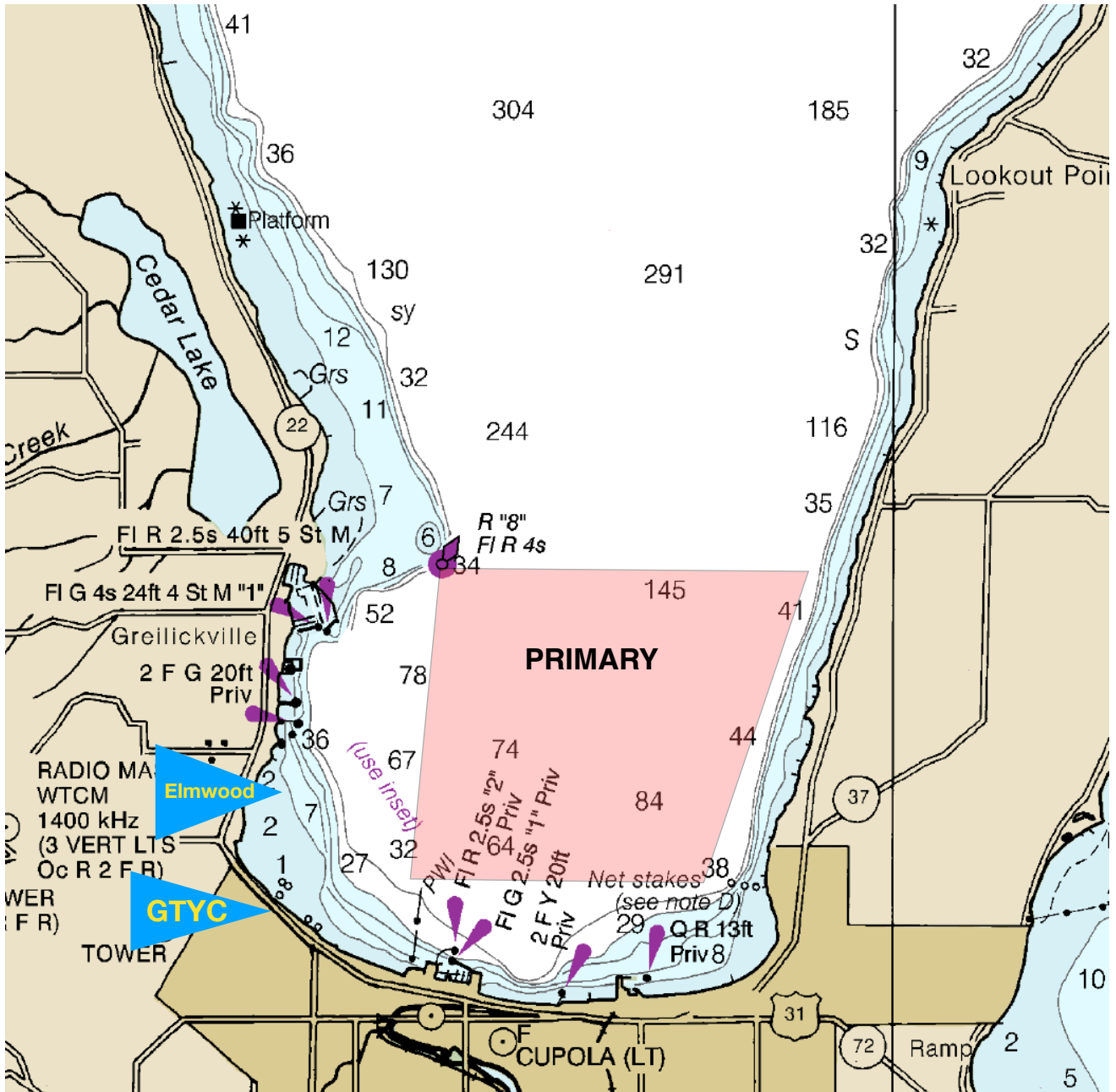
21 - Disclaimer Of Liability — Competitors participate in the regatta entirely at their own risk. See rule 4, Decision to Race. The organizing authority will not accept any liability for material damage or personal injury or death sustained in conjunction with or prior to, during, or after the regatta.

21. INSURANCE - Each participating boat shall be insured with valid, third party liability insurance with a minimum coverage of \$300,000 USD.

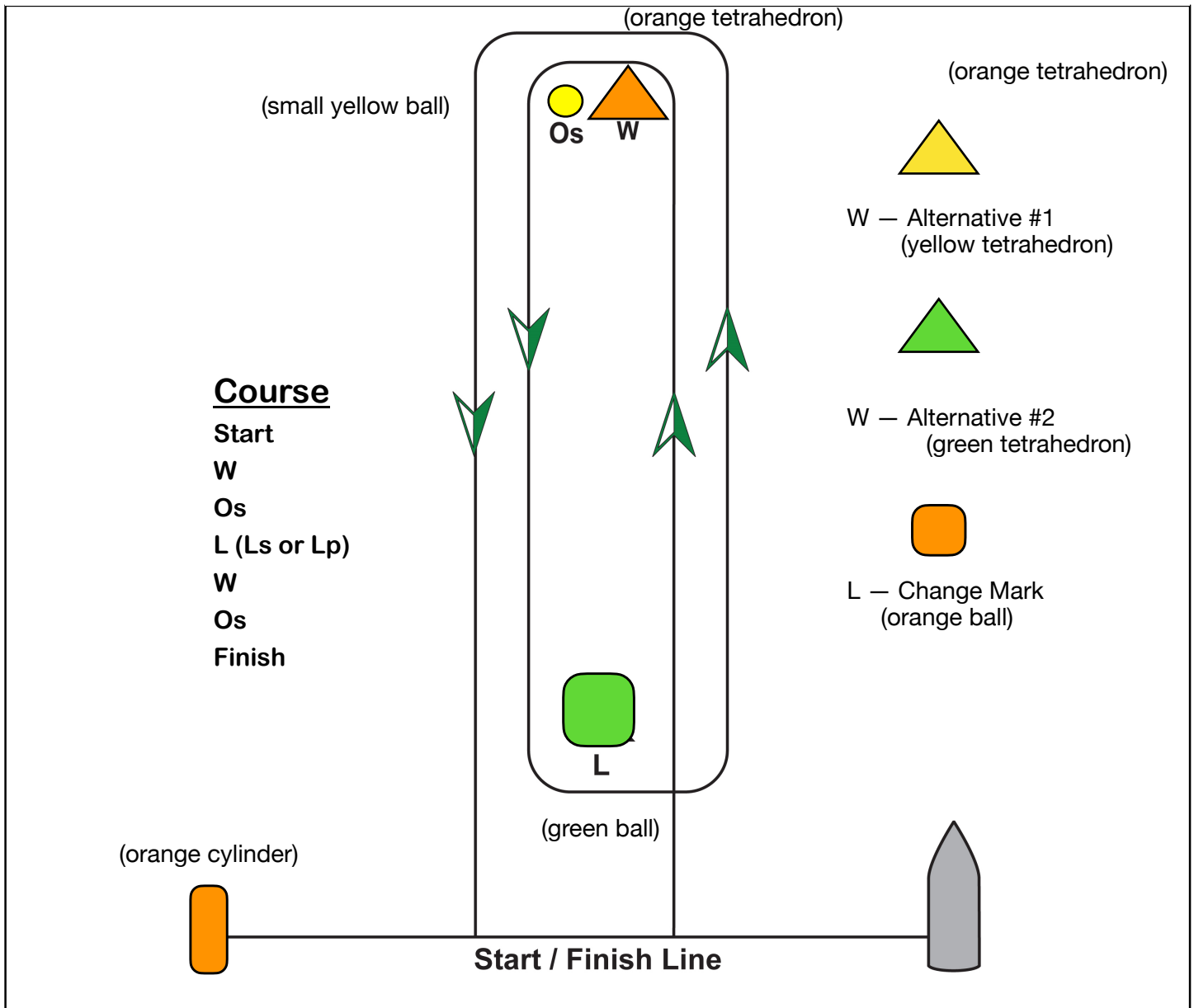
22 - COVID WAIVER - The novel coronavirus, COVID-19, has been declared a worldwide pandemic by the World Health Organization. COVID-19 is extremely contagious and is believed to spread mainly from person-to-person contact. It is believed that an individual can be infected with COVID-19 without their knowledge and be asymptomatic. The Grand Traverse Yacht Club (GTYC) has put in place preventative measures to reduce the spread of COVID-19. However, the GTYC cannot guarantee that I or anyone else will not become infected with COVID-19, and participation in an GTYC event could increase the risk of contracting COVID-19. By participating in an GTYC event, I ACKNOWLEDGE the contagious nature of COVID-19 and VOLUNTARILY ASSUME THE RISK that I may be exposed to or infected by COVID-19 by participating in an GTYC event, and that such exposure or infection may result in personal injury, illness, permanent disability, and death. I understand that the risk of becoming exposed to or infected by COVID-19 at an GTYC event may result from the actions, omissions, or negligence of myself or others, including, but not limited to, GTYC employees, volunteers, and other participants. I UNDERSTAND AND VOLUNTARILY ACCEPT AND ASSUME ALL the foregoing risks related to COVID-19 and accept sole responsibility for any injury or illness that may occur. Further, I UNDERSTAND AND AGREE that this release includes any Claims based on the actions, or omissions, of the GTYC, its employees, agents, and volunteers, whether a COVID-19 infection occurs before, during, or after participation in any GTYC event.

GTYC 2021 Red 8 Regatta

Primary Race Area, 1 sq mile east of Red 8, 1 mile south

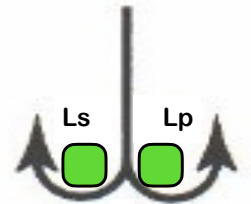


Attachment B — COURSE DIAGRAM

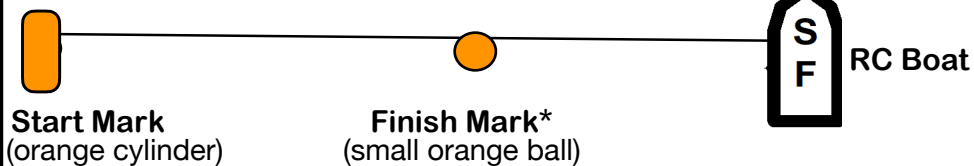


Attachment C — GATE MARK ROUNDING

When there is a gate at Mark L, boats shall sail between the gate marks (Ls & Lp) from the direction of the previous mark and round either mark.
(marks shall be green balls)



Attachment D — Start/Finish Line



* at the start, the finish mark, if present, is not a mark of the course.