



ROLEX BIG BOAT SERIES September 15-18, 2022

Organizing Authority: St. Francis Yacht Club
SAILING INSTRUCTIONS

The notation [NP] in a rule in the SI means it shall not be grounds for protest by a boat. This changes RRS 60.1(a).

The notation [SP] in a rule in the SI means that a standard penalty may be applied by the Race Committee or the Technical Committee without a hearing. This changes RRS 63.1 and A5.

The notation [DP] in a rule in the SI means that a discretionary penalty applied by the International Jury with a hearing.

1. NOTICES TO COMPETITORS

- 1.1. Notices to competitors will be posted on the official regatta notice board located at https://yachtscoring.com/notice_board_summary.cfm and may be posted on club bulletin board
- 1.2. The race committee may make radio broadcasts using the following VHF channels:
 - a. For Treasure Island starting area - VHF channel 69
 - b. For North Course starting area - VHF channel 71
 - c. For Race Deck starting area - VHF channel 68

2. CHANGES TO SAILING INSTRUCTIONS

Any change to the sailing instructions will be posted by 0930 on the day it will take effect, except any change to the schedule of races will be posted by 1900 on the day before it will take effect.

3. SIGNALS MADE ASHORE

- 3.1. Signals made ashore will be displayed from the flagpole located on the StFYC Race Deck.
- 3.2. When flag AP is displayed ashore, '1 minute' is replaced with 'not less than (60) sixty minutes. This changes RRS Race Signals.
- 3.3. When AP over Bravo is displayed ashore, Race Deck starting area races not started are postponed. The warning signal will be made one (1) minute after removal unless at that time the race is postponed again or abandoned. This changes RRS 27.3.

4. SCHEDULE

- 4.1. The schedule is as follows:

	Wednesday September 14th	Thursday September 15th	Friday September 16th	Saturday September 17th	Sunday September 18th
Competitors' Briefing	1730	-	-	-	-
First Warning	-	1100	1100	1100	1100
First Warning (Classics)		1300	1300	1300	1100

- 4.2. Attachment A lists the schedule of races and their intended starting areas.
- 4.3. On the last day of the racing, no warning signal will be made after 1400; except that a warning signal for re-started class may be made after this time.

5. CLASS FLAGS

<u>Class</u>	<u>Flag Description</u>
One Design Classes	Black class insignia on a white field
ORC A	Black letter A on a white field
ORC B	Black letter B on a white field
Classic	Pink flag

6. MARKS

- 6.1. The *marks* are described in Attachment B – Mark Descriptions.
- 6.2. *Mark “G”* will be a gate. If one of the gate *marks* is not in place, the remaining *mark* shall be rounded to port.

7. COURSES

- 7.1. The courses are described on Attachment C – Course Descriptions. Course distances are estimates.
- 7.2. No later than the warning signal, the race committee signal boat will display:
 - a placard designating the course;
 - For courses 1-9: A pennant designating the *mark* rounding direction. If a red pennant is displayed all *marks*, except for gates, shall be rounded to port. If a green pennant is displayed all *marks* except for gates, shall be rounded to starboard.
 - For courses 10-33: The rounding direction of each mark is indicated with either ‘s’ for starboard or ‘p’ for port except for gates.

8. AREAS THAT ARE OBSTRUCTIONS [NP] [DP]

Each line bound by the following two points is designated as an *obstruction*. Boats are prohibited from crossing any of these lines while *racing*.

- a. The “H” Beam piling (located approximately 200 yds west of the StFYC) and the closest point ashore.
- b. Anita Rock Q 20ft 5M located approximately 0.30nm west of StFYC (“Anita Rock” Q 20ft 5M) and the closest point ashore.
- c. Anita Rock Q 20ft 5M located approximately 0.30nm west of StFYC (“Anita Rock” Q 20ft 5M), and a yellow buoy “ARo”, or a temporary white ball in its place, (located approximately 100 yards northwest of the Anita Rock Light).
- d. Yellow buoy “AR”, or a temporary white ball in its place, (located approximately 100 yards northwest of Anita Rock Light) and the closest point ashore.
- e. The South Tower of the Golden Gate Bridge and the closest point ashore.
- f. The Green/Red Bell Buoy off the West end of Alcatraz Island and the closest point ashore on Alcatraz Island.
- g. The Green Buoy (G“3”) South of Point Blunt-Angel Island and the closest point ashore on Angel Island.
- h. A white temporary buoy off of Pier 39 and the end of Pier 39.
- i. A white temporary buoy off of Pier 43-1/2 and the end of Pier 43-1/2.
- j. The white temporary buoy off of Pier 39 mentioned in SI 8.h and the white temporary buoy off of Pier 43-1/2 mentioned in SI 8.i.
- k. The northeastern most corner of Pier 45 and Fl R 2.5s “2” on the easternmost end of the Aquatic Park breakwater.

9. CHECK-IN [NP] [SP]

Before the first warning signal for the first race each day, each boat shall: 1) sail past the race committee signal boat on starboard tack; 2) announce her sail number; and 3) obtain the recognition of her sail number by the race committee.

10. THE START

- 10.1. The starting areas listed in Attachment A herein are intended locations only. The race committee may originate any course from any area.
- 10.2. For the Treasure Island and North Course areas: The starting line will be between a staff displaying an orange flag on the RC signal boat, and the course side of a red inflatable cone or a staff displaying an orange flag on a race committee boat.
- 10.3. For the Race Deck course area: The starting line will be between an orange inflatable mark and a yellow placard on the Race Deck.
- 10.4. A boat failing to *start* within four (4) minutes after her starting signal shall be scored DNS without a hearing. This changes RRS A5.1 and A5.2.

11. RECALLS

As a courtesy, the race committee will attempt to hail On Course Side (OCS) boats via VHF. Failure to execute this hail, the order of hails, or the failure to receive it shall not relieve a boat of her sole obligation to start properly, nor shall it constitute an improper action or omission of the race committee under RRS 62.1(a).

12. CHANGE OF THE NEXT LEG OF THE COURSE

- 12.1. To change the next leg of the course, the race committee will move the original *mark* (or the finishing line) to a new position.
- 12.2. The race committee may change a leg of the course by up to five (5) degrees in bearing and/or 0.2nm in length without a signal. This changes RRS 33.

13. THE FINISH

- 13.1. For downwind finishes “DW”: The finishing line will be between a staff displaying a blue flag on the signal boat and an orange inflatable ball, opposite the starting line.
- 13.2. For race deck “RD” finishes: The finishing line shall be between StFYC outer *mark* A and a yellow placard on the StFYC Race Deck. Boats shall keep StFYC inner *mark* “B” to the south while *finishing*. [DP]

14. SAFETY REGULATIONS [NP] [DP]

A boat that retires from a race shall notify the race committee before leaving the course, or, when that is impossible, immediately after arrival ashore via VHF radio or by contacting the Race Office at (415) 655-7756.

15. PENALTY SYSTEM

RRS Appendix V – Alternative Penalties will apply except for the Classic Class for which RRS 44.3 shall apply.

16. TIME LIMITS

- 16.1. The time limit for the first boat in each class to *finish* will be 4.5 hours.
- 16.2. One Design Classes: A boat still *racing* more than 30 minutes after the first boat in her class sails the course and *finishes*, will be scored DNF without a hearing. This changes RRS 35, A4 and A5.
- 16.3. ORR and Classic Classes: A boat still *racing* more than 60 minutes after the first boat in her division sails the course and *finishes*, will be scored Time Limit Expired (“TLE”) without a hearing. In such case, the RC may terminate the race and score the boat points equal to the number of boats finishing plus two (2). This changes RRS 35, 63.1, A4, A5, and A10.

17. PROTESTS AND REQUESTS FOR REDRESS

- 17.1. RRS Appendix T – Arbitration will apply.
- 17.2. *Protest* forms are available at the jury desk located next to the main regatta entrance. *Protests* and requests for redress or reopening shall be delivered there within the appropriate time limit. *Protests* may also be filed online at <https://www.racingrulesofsailing.org/documents/4531/event?name=2022-rolex-big-boat-series>.
- 17.3. The *protest* time limits is as follows and satisfy the requirements of RRS 61.3:
 - a. For Treasure Island starting area: 60 minutes after the TI signal boat docks.
 - b. For North Course starting area: 60 minutes after the NC signal boat docks.
 - c. For Race Deck starting area: sixty (60) minutes after the last boat *finishes* the last race of a given day
- 17.4. In the event of a complaint by Vessel Traffic or the USCG, the *protest* time limit will be extended up to two (2) days after the conclusion of the regatta. This changes RRS 60.2(a) and RRS 61.3.
- 17.5. The jury will hear *protests* and requests for redress as soon as possible and in the order, it determines. The hearing schedule will be posted no later than thirty (30) minutes after the close of *protest* time. This constitutes the notification required by RRS 63.2. Competitors may access the hearing schedule online at <https://www.racingrulesofsailing.org/documents/4531/event?name=2022-rolex-big-boat-series>.
- 17.6. Notices of any other *protests* by the race committee, technical committee or jury will also be posted. This constitutes the notification required by RRS 61.1(b). Any such *protest* will also be posted at <https://www.racingrulesofsailing.org/documents/4531/event?name=2022-rolex-big-boat-series>.
- 17.7. It is the sole responsibility of each boat involved to be ready and have witnesses available when the hearing is called.
- 17.8. If the race committee posts a list of boats scored OCS, ZFP, UFD, or BFD on the official notice board before the *protest* time limit, a request for redress based on such a posted score shall be made no later than sixty (60) minutes after the *protest* time limit. This changes the first sentence of RRS 62.2.
- 17.9. On the last scheduled day of racing, a request for redress on a jury decision, or a request to reopen a hearing, shall be delivered no later than sixty (60) minutes after the decision was announced, either written or orally. This changes RRS 62.2 and RRS 66.

18. SCORING

- 18.1. One (1) race must be completed to constitute a series.
- 18.2. A boat's series score will be the total of her race scores, with no score excluded. This changes RRS A2.1.
- 18.3. For ORR: an ORR boat's corrected time will be calculated using her appropriate Time Correction Factor (TCF).
- 18.4. For Classics: a Classic boat's corrected time will be calculated using her ORR EZ GPH rating.
- 18.5. Shall be scored by using each boat's average percentage score (finish points divided by the number of starters for each race) within its respective class for all her races during the Series. The team score is an average of all boats' average percentage scores. The trophy will be awarded to the team with the lowest average percentage points

19. COMMERCIAL TRAFFIC

- 19.1. *Racing* occurs near active shipping channels. The race committee would like to call special attention to the preamble to RRS Part 2.
- 19.2. A race committee boat may signal a boat that is *racing* to alter course to avoid impeding the passage of commercial vessels by making a sound signal (horn or whistle) and clearly displaying flag W at the boat. The signaled boat shall promptly comply with the signal unless compliance would create an unsafe condition. If a boat fails to comply with such a signal, the race committee shall *protest* the boat. In this case the protest committee shall assume that the course alteration would not have created an unsafe condition, and the protested boat shall have the burden of proving otherwise.
- 19.3. If a commercial vessel sounds five blasts at a boat which is *racing*, and/or the vessel or the USCG is subsequently able to identify the offending boat, the boat may be subject to *protest*. In the event the race committee files the *protest*, the protest committee shall assume that the identified boat has impeded passage or violated the U.S. Inland Navigation Rules, and the identified boat shall have the burden of proving otherwise.
- 19.4. A boat cannot exonerate herself when she may have broken this sailing instruction. When the jury decides that a boat has broken this sailing instruction, the penalty shall be disqualification not excludable (DNE).
- 19.5. The StFYC shall cooperate with and provide relevant information to the Coast Guard or other governmental authority regarding investigations of boats impeding ship traffic or violating U.S. Inland Navigation Rules (33 CFR 83).

20. SUPPORT PERSONS [NP] [SP] [DP]

- 20.1. *Support persons* shall stay outside areas where boats are *racing* from the time of the preparatory signal until all boats have *finished*, or until the race committee signals a *postponement* or *abandonment*.
- 20.2. *Support persons* shall comply with any additional directions given by the OA, the race committee or jury, to help a boat or competitor that is in danger while *racing*.

21. PRIZES

- 21.1. Take home prizes will be awarded based on participation.
- 21.2. In addition to take-home prizes, the following perpetual trophies will be awarded: St. Francis Perpetual, Atlantic Perpetual, Keefe-Kilborn Memorial, Richard Rheem Perpetual, and Commodore's Cup.
- 21.3. *The TEam Trophies will be award to the first place team of three boats*

22. DISCLAIMER OF LIABILITY

Sailing is an activity that has an inherent risk of damage and injury. Competitors in this race participate entirely at their own risk. See RRS 3, Decision to Race. The race organizers (OA, race committee, jury, host club, sponsors, or any other organization or official) will not be responsible for damage to any boat or other property or the injury to any competitor, including death, sustained as a result of participation in this race. By participating in this regatta, each competitor agrees to release the race organizers from all liability associated with such competitor's participation in this event to the fullest extent permitted by law.

23. RIGHTS TO USE NAME, LIKENESS, AND PERSONAL INFORMATION

- 23.1. By participating in this event, competitors automatically grant to the organizing authority and the event sponsors the right, in perpetuity, to make, use, and show, at their discretion, any photography, audio and video recordings, and other reproductions of them made at the venue or on the water from the time of their arrival at the venue, until their final departure, without compensation.

23.2. Additionally, competitors automatically grant to the organizing authority and race officials the right to use their personal contact information, including but not limited to a current email address and cell phone number, for the purpose of race administration and regatta communications.

ROLEX BIG BOAT SERIES SAILING INSTRUCTIONS

Organizing Authority: St. Francis Yacht Club

ATTACHMENT A – SCHEDULE OF RACES

The intended schedule of races, course areas and starting order for the first race each day is as follows:

Thursday September 16	Friday September 17	Saturday September 18	Sunday September 19
Races 1 & 2	Races 3 & 4	Races 5 & 6	Race 7
Treasure Island	Treasure Island	Treasure Island	Treasure Island
ORR A	J/105	ORR A	J/105
ORR B	J/88	ORR B	J/88
Express 37	J/70	Express 37	J/70
North Course	North Course	North Course	North Course
J/105	ORR A	J/105	ORR A
J/88	ORR B	J/88	ORR B
J/70	Express 37	J/70	Express 37
Race Deck	Race Deck	Race Deck	Race Deck
Race 1 - Classic	Race 2 - Classic	Race 3 - Classic	Race 4 - Classic

ROLEX BIG BOAT SERIES SAILING INSTRUCTIONS

Organizing Authority: St. Francis Yacht Club

ATTACHMENT B – MARK DESCRIPTIONS

MARK	DESCRIPTION
A	Yellow sphere "A" approx. 400 yds north of StFYC Race Deck
G	2 Yellow tetrahedrons set as a leeward gate approx. 300 yds to windward of the signal boat
W	Yellow inflatable tetrahedron set as a windward mark
Wo	Orange inflatable ball set as an offset mark to mark W
1	Yellow inflatable tetrahedron set 0.40nm @ 312° M from Anita Rock
1o	Orange inflatable ball set as an offset mark to mark 1
3	Yellow inflatable cone set approx. 0.15nm @ 165° M from Point Cavallo
4	Yellow inflatable cone set approx. 0.50nm at 005° M from Treasure Island North Light Fl R 2.5s "6"
6	Yellow Can buoy approx. 0.41nm @ 54° M from Q Red "2" Priv
7	Red buoy "2" Fl R 6s approx. 1.30nm @ 57° M from Alcatraz Light Fl 5s 214ft 20M
8	Red buoy "4" Fl R 4s Horn approx. 1.13nm @ 95° M from Point Blunt
9	Yellow inflatable cone approx. 0.30nm @ 115° M from Red/Green buoy "HR" 1 Fl (2+1) R 6s
16	Yellow Can buoy "Blackaller" 0.48nm @ 83° M from Fort Point
17	Red/Green buoy "HR" 1 Fl (2+1) R 6s at Harding Rock
18	Green/Red buoy "BR" Fl (2+1) G 6s Bell at Blossom Rock
19	Yellow inflatable tetrahedron approx. 0.40nm @ 056° M from Pt. Diablo Light
20	Red/Green Buoy Fl (2+1) R6s Bell (ocn) 0.61nm 237° M from Pt. Bonita
21	Green Buoy "1" Fl G 6s 0.70nm @ 47° M from Alcatraz Light Fl 5s 214ft 20M

ROLEX BIG BOAT SERIES SAILING INSTRUCTIONS

Organizing Authority: St. Francis Yacht Club

ATTACHMENT C – COURSE DESCRIPTIONS

North Course Starting Area VHF Channel 71	Course							Finish	≈ Distance	Rating
	1	W	Wo	G	W	Wo		DW		50/50
	2	9	G	9				DW	10.3	50/50
	3	9	G	3				DW	13.4	50/50
	4	3	G	3				DW	16.5	50/50
	17	Wp	Wop	G	Wp	Wop		RD		60/40
	18	3p	21p	1p				RD	10.3	60/40
	19	19p	7p	1p				RD	13.3	60/40
	20	3p	G	19p				RD	18.5	60/40
	21	3p	6p	21p	19p			RD	14.4	SF Bay
22	19p	18p	1s	9s	8p	19p	RD	20.5	SF Bay	
23	19p	4p	3p	9p	19p		RD	21.2	SF Bay	
24	20p	9p	3p	21p	19p		RD	23.5	50/50	
32	3p	16p					RD	6.4	SF Bay	

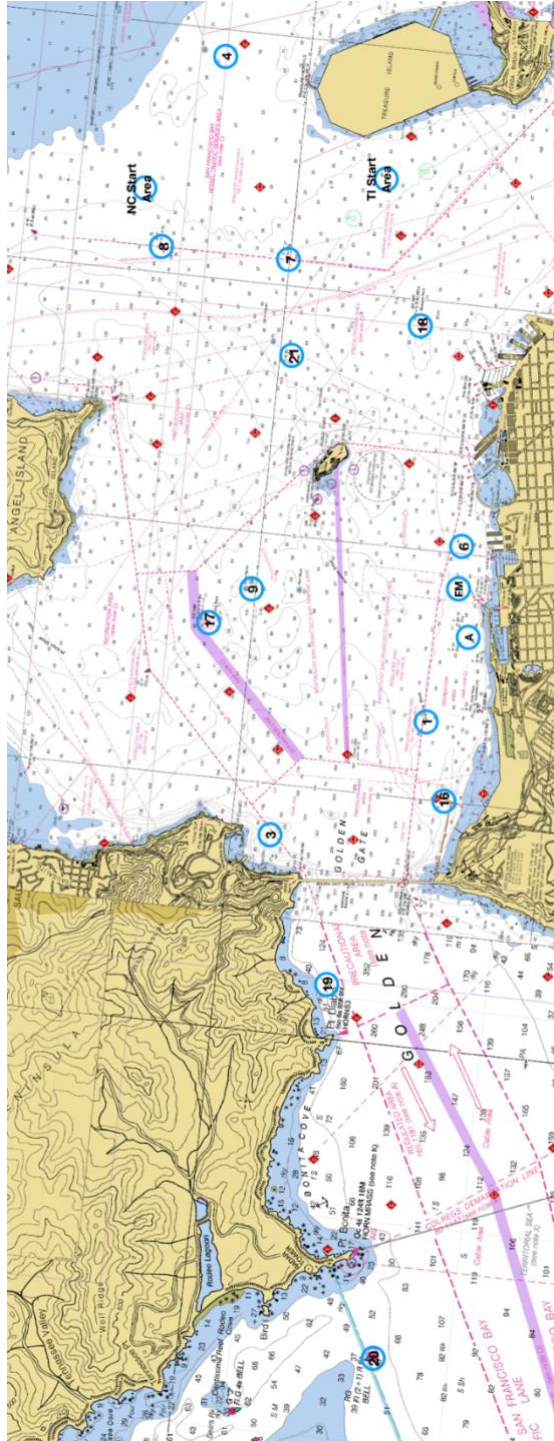
Treasure Island Starting Area VHF Channel 69	Course								Finish	≈ Distance	Rating	
	5	W	Wo	G	W	Wo				DW		50/50
	6	FM	G	FM						DW	9.2	50/50
	7	1	1o	G	6					DW	11	50/50
	8	1	1o	G	1	1o				DW	14	50/50
	9	W	Wo	G	W	Wo				RD		60/40
	10	16s	7p	1p						RD	11.2	60/40
	11	16s	7p	19p						RD	14.3	60/40
	12	16s	4p	19p						RD	17.8	60/40
	13	1s	9s	21p	1p					RD	9.5	SF Bay
	14	1s	9s	21p	16p	18p	1p			RD	14.7	SF Bay
	15	1s	21p	3p	6p	18p	19p			RD	19.1	SF Bay
16	1s	21p	3p	6p	18p	6p	18p	19p	RD	23.7	SF Bay	
33	16p								RD	5.2	90/10	

Race Deck Starting Area VHF Channel 68	Course								Finish	≈ Distance
	25	16s	17s	6s	1p				RD	6.4
	26	16s	21p	3p	1p				RD	8.8
	27	16s	17s	6p	21p	1p			RD	9.4
	28	16s	7p	3p	1p				RD	10
	29	16s	17s	8p	3p	1p			RD	10.9
	30	16s	6p	3p	1p	21p	1P		RD	11.7
31	16s	18p	8p	9s	8p	3p	1p	RD	15.8	

ROLEX BIG BOAT SERIES SAILING INSTRUCTIONS

Organizing Authority: St. Francis Yacht Club

ATTACHMENT D – MAP OF RACING AREAS



Approximate Mark Locations and Start Areas: