



# 2022 Championship Series

May 29<sup>th</sup> – September 26<sup>th</sup>, 2022

Wayzata Yacht Club (WYC) - Apostle Islands Station (AIS)  
Bayfield Wisconsin, USA

## SAILING INSTRUCTIONS

The Organizing Authority (OA) of the 2022 Championship Series is the Apostle Islands Station / Wayzata Yacht Club, LLC (AIS/WYC).

The notation [NP] in a rule in the Notice of Races means that breaches in this rule will not be grounds for a protest by a boat. This changes RRS 60.1 (a).

### 1. RULES

- 1.1. The series will be governed by the rules as defined in *The Racing Rules of Sailing* (RRS).
- 1.2. [DP] Each boat shall comply with all U.S. Coast Guard and other applicable governmental laws, rules, and regulations.
- 1.3. The 2022 WYC/AIS Safety Equipment Requirements, which can be found at [www.wyc.org/ais](http://www.wyc.org/ais)
- 1.4. The Racing Rules will be changed as follows:
  - 1.4.1. If a race is designated with a waypoint, World Sailing (WS) Appendix WP shall apply. This appendix adds a definition of a *Waypoint*; and changes the definition of *Mark*, and *Zone*. WS Appendix WP can be found at the relevant Yachtscoring.com event page.
  - 1.4.2. A breach of RRS 77 may, at the discretion of the Protest Committee (PC), be less than disqualification.

### 2. CHANGES TO SAILING INSTRUCTIONS

- 2.1. Changes to the SIs will be posted on the Official Notice Board at the relevant Yachtscoring.com event page by 0900. Changes to the SIs will also be announced approximately two hours prior to the warning signal for the first race of the day by the Race Committee (RC) on VHF Radio (VHF), SI 3.2. Any change to the schedule of races shall be posted by 2000 on the day before it will take effect except as defined in SI 6.2 and SI 6.3.
- 2.2. In accordance with RRS 90.2(c) the RC may alter the SI on the water by flying Code Flag L, hailing the fleets, and announcing the change on VHF.
- 2.3. Competitors are expected to obtain all relevant race documents on their own.

### 3. COMMUNICATIONS WITH COMPETITORS

- 3.1. The online official notice board is located at the relevant Yachtscoring.com event page
- 3.2. On the water, the Race Committee (RC) intends to monitor and communicate with competitors on VHF radio channel 72.
- 3.3. The following communications may be made by the RC on VHF channel 72.
  - 3.3.1. A courtesy hail will be made each day at 0900. This hail will contain relevant racing information such as the intended location of the Starting Area, as well as any expected Postponement on Shore due to weather.
  - 3.3.2. The RC may report all visual signals displayed by the RC and report OCS boats after the start on the VHF channel.



- 3.4. [DP] While racing from the first warning signal until the end of the last race of the day, except in an emergency or when notifying the RC of a retirement or withdrawal, a boat shall not make voice or data transmissions and shall not receive voice or data communication, that are not available to all boats.
- 3.5. [DP] Any boat using a sail with an alternate sail number shall report the proper sail number to the RC in writing before 0900 at the Apostle Island Marina dock office, or via VHF hail no later than 30-minutes prior to the warning signal for the first race of the day.

#### **4. CODE OF CONDUCT**

- 4.1. [DP] Competitors and support persons shall comply with reasonable requests from race officials.
- 4.2. [DP] The registered competitor shall be responsible for conduct of the entire crew before, during, and after the Race while at Race related locations for Race related events. See RRS 2 and 69.

#### **5. SIGNALS MADE ASHORE**

- 5.1. Signals made ashore will be displayed on the RC Signal Boat at dock at the Port Superior Marina, 34480 Port Superior Road, Bayfield, WI.
- 5.2. When flag AP is displayed ashore, '1 minute' is replaced with 'not less than 1 hour' in the Race Signal AP. This changes RRS Race Signal AP.

#### **6. SCHEDULE OF RACES**

- 6.1. The schedule of races is listed in Appendix A.
- 6.2. The sailing of subsequent races for the Jib-and-Main Fleet (JAM), Mid-Distance Fleet (MD), and Multihull Fleets will be announced via VHF during the day's 0900 radio call.
- 6.3. The scheduled time of the warning signal for the first race each day 1100.
- 6.4. On the last scheduled day of racing for series, no warning signal will be made after 1400.

#### **7. CLASS FLAGS**

- 7.1. Classes will be defined and posted on the Official Notice Board at the relevant Yachtscoring.com event page prior to first race of the series.

#### **8. RACING AREA**

- 8.1. Racing may be held anywhere in, near or around the Apostle Islands. Appendix B shows the partial area in which racing may be held.

#### **9. COURSES**

- 9.1. Appendix B shows the approximate location of the marks that might be used to define the course for the MD, JAM, and Multihull fleets, or when all fleets sail a mid-distance course.
- 9.2. Appendix C shows the configuration of windward/leeward marks, which may make up part of the course for the MD, JAM, and Multihull Fleets.
- 9.3. Courses will be posted on the display board on the RC Signal Boat. They will show the course, the order in which the marks are to be passed, and the side on which each mark is to be passed. The RC will also announce the course via VHF.
- 9.4. The approximate compass bearing and distance from the starting line to Windward Mark will be displayed from RC Boat.



## 10. MARKS

- 10.1. Marks may be:
  - 10.1.1. Temporary buoys (which may be red, orange, white, or green and be in the form of cylinders, spheres, tetrahedrons, or robotic marks),
  - 10.1.2. Islands,
  - 10.1.3. Government navigation marks/buoys,
  - 10.1.4. Waypoints as defined a geographic position on the surface of the water defined by WGS 84 latitude and longitude coordinates expressed in degrees decimal minutes. (DDM).
- 10.2. All boats shall obey all government navigation marks/buoys while racing, except if the navigation mark/buoy is a mark of the course, then such navigation mark/buoy shall be rounded pursuant to RC instructions.

## 11. THE START

- 11.1. Races will be started using RRS 26. The warning signal of each succeeding class may be made with the start signal of the preceding class.
- 11.2. Start order: JAM, MD, and Multihull. If there is only one boat entered for a fleet, the RC may combine that fleet with another fleet for its start.
- 11.3. The starting line will be between a staff displaying an orange flag on an RC Signal Boat and course side of the starting mark.
- 11.4. [DP] Boats whose warning signal has not been made shall avoid the starting area during the starting sequence for other races.
- 11.5. If any part of a boat's hull is on the course side of the starting line at her starting signal and she is identified, the RC will attempt to hail her sail number on VHF channel 72. Failure to hail her number, failure of her to hear such a hail, or the order in which boats are hailed will not be grounds for a request for redress. This changes RRS 62.1(a)
- 11.6. Recalls will be signaled as follows:
  - 11.6.1. When signaling an individual recall, RC will announce via VHF the sail number(s) of boat(s) identified as being OCS. This changes RRS 29.1.
  - 11.6.2. When signaling a General Recall, the recalled class will go to the end of the starting order. This changes RRS 29.2
- 11.7. A boat that does not start within 10 minutes after her starting signal will be scored Did Not Start (DNS) without a hearing. This changes RRS A5.1 and A5.2.

## 12. THE FINISH

- 12.1. MD/JAM/Multihull Fleets:
  - 12.1.1. The Bayfield Fishing Dock finish line may be used for all MD/JAM/Multihull Fleets. Alternatively, MD/JAM/Multihull Fleets may finish between a staff displaying a blue flag on an RC Signal Boat and the course side of the mark nearest to the RC Signal Boat.
  - 12.1.2. When the Bayfield Fishing Dock is used as one mark of the finish line, the other end will be the course side of a mark approximately 200 feet from the end of the pier, and in a line perpendicular to the dock.
- 12.2. [DP] At the discretion of the RC, a race may be finished at a waypoint. A waypoint is defined by latitude and longitude coordinates. When finishing at a waypoint, the finish line is a line through the waypoint at a 90-degree angle to the last leg and of the shortest practical length. Boats shall log their GPS finish time. Boats finishing shall also log the sail number of the boat ahead and behind their finish position if available.



### **13. PENALTY SYSTEM**

- 13.1. US Sailing Prescription V1 shall apply.

### **14. TIME LIMITS**

- 14.1. MD/JAM/Multihull Fleets:
  - 14.1.1. There will be no time limit for the MD, JAM, or Multihull Fleet courses. RC will be on-station at the finish line (either on-the-water, or ashore) for 4 hours from the fleet's starting signal.
  - 14.1.2. Any boat finishing after 4 hours shall self-report their GPS finishing time to RC or MD/JAM/Multihull Liaison within 1 hour of finishing.
- 14.2. All boats continuing to race after sunset will use every reasonable effort to report (via VHF Channel 72) their GPS position on an hourly basis to other MD/JAM/Multihull boats continuing to race and the MD/JAM/Multihull liaison.
- 14.3. All Fleets: There is no time limit for the Dobson Cup, Hulings Around Madeline, and Silver Bay race.

### **15. HEARING REQUESTS**

- 15.1. For each class, the protest time limit is 90 minutes after the last boat has finished the last race of the day of each sailing event or the RC signals no more racing today, whichever is later.
- 15.2. Protests shall be delivered to RC Principal Race Officer (PRO) or Chief Judge within the protest time limit.
- 15.3. For the requirements stated in RRS 61.3, a protest or request for redress by a boat may be met by electronically submitting their protest to the protest committee within the time limit stated in the SI. Information required by RRS 61.2 may be delivered using electronic mail delivery to WYCAISPROTEST@gmail.com. Instructions on how to file a protest form may be found on the relevant event page on YachtScoring.com. The party submitting a protest electronically should travel to the regatta venue as quickly as possible to participate in an arbitration meeting or protest hearing.
- 15.4. Hearing request forms will be available at the Official Notice Board, and from the PRO or Chief Judge. Forms may also be downloaded at the relevant page on YachtScoring.com.
- 15.5. Notices will be posted on the Official Notice Board as soon as reasonably possible after receiving the protest/request for redress to inform competitors of hearings in which they are parties or named as witnesses. Where reasonably possible, hearings will be scheduled for the day the protests were received and in the order the protests were received. In unusual circumstances and with sufficient notice, the Protest Committee (PC) may schedule a hearing for a different day, time or order.
- 15.6. Failure to hear radio communication required by the RC under SI 3.1 and 3.2; shall not be grounds for redress. This changes RRS 62.

### **16. SCORING**

- 16.1. Corrected time will be determined using the PHRF Time on Distance calculation.
- 16.2. A boat that does not finish within the specified time period (SI 14) shall be scored points for the finishing place one more than the number of boats that finished in the time period. These boats will be assigned the scoring abbreviation of TLE. This changes RRS 35, A4 and A5.
- 16.3. A boats series score shall be the total of all her races. There are no throw-outs. This changes RRS A2.1.
- 16.4. One race is required to be completed to constitute a series



## **17. SAFETY REGULATIONS**

- 17.1. [DP] Each boat shall comply with the following:
  - 17.1.1. All USCG and other applicable governmental laws, rules and regulations.
  - 17.1.2. The 2021 AIS/WYC SER which can be found at [www.wyc.org/ais](http://www.wyc.org/ais) and the relevant [Yachtscoring.com](http://Yachtscoring.com) page for each event.
  - 17.1.3. Personal Flotation Devices
    - 17.1.3.1. At the Start and Finish of each race, each person on board each boat is required to wear a USCG or ISO approved personal flotation device (PFD). The use of an ISO approved PFD does not negate the USCG requirement that each vessel must have at least one (1) USCG approved Type III or V life jacket for each person on board. Belt pack style PFD's are not allowed.
    - 17.1.3.2. For any boat with only two (2) individuals on board, both individuals shall wear a life jacket at all times while afloat, except briefly while changing or adjusting clothing or personal equipment.
- 17.2. Abandonment Due to Weather
  - 17.2.1. Races for individual fleets may be abandoned or postponed when the 5-minute mean wind speed exceeds 24 knots or wind gusts exceed 30 knots, as determined by PRO. If these conditions exist 90 minutes before the scheduled warning signal, signals will be made ashore. If these conditions develop less than 90 minutes prior to the scheduled warning signal start, signals may be made by RC Signal Boat.
- 17.3. [DP] A boat that retires from a race shall inform RC at the first reasonable opportunity. Boats that retire shall be scored RET.

## **18. PRIZES**

- 18.1. Trophy prizes will be awarded for 1st, 2nd & 3rd place in each fleet. Additional trophy prizes or awards may be awarded at the discretion of the Trophy Chairperson.

## **19. RISK STATEMENT, DISCLAIMER OF LIABILITY**

- 19.1. Competitors participate in this regatta entirely at their own risk. See rule 3, Decision to Race. Competitors acknowledge that sailing involves potential risks. As a condition of their participation in this regatta, competitors release all claims they may have against AIS/WYC and its officers, directors, members, committees, and employees for damage to property, personal injury or death sustained in conjunction with or prior to, during or after the regatta. Competitors shall be responsible for damage or injury caused by their breach of The Racing Rules of Sailing or applicable governmental rules for the avoidance of collision.

## **20. INSURANCE**

- 20.1. All boats shall maintain Liability Insurance in full force and effect during Racing which will include a General Liability policy written by a reputable insurance company insuring the owner and any operators against liability for bodily injury in limits of not less than \$300,000 and for property damage of not less than \$100,000. Each boat will present proof of insurance upon OA's request.

## **21. CONDITION OF PARTICIPATION**

- 21.1. Code of Conduct. The registered competitor shall be responsible for conduct of the entire crew before, during, and after the Race while at Race related locations for Race related events. See RRS 2 and 69.



21.2. As a condition of participation, each participant (on behalf of him/herself and their children and minors) grants OA, sponsors and their designated photographers the perpetual, irrevocable right, license and permission to use, publish and distribute the participant's name, photos, video, images and statements of them and their boat and crew in all forms and media worldwide (including without limitation Internet) for any purposes whatsoever (including without limitation advertising, promotions, sales of pictures, etc.) without compensation or further permission.

**22. FURTHER INFORMATION**

22.1. Organizing Authority (OA) and host club is the AIS/WYC Station, LLC, a Wisconsin nonprofit corporation. For further information, contact AIS Fleet Captain, Rich Baker, by emailing [rich.baker@mac.com](mailto:rich.baker@mac.com) or calling (612) 805-3701.



## Appendix A – Schedule

2022 Dates	Warning	Series	Scheduled Races		Comments
			MD and JAM*	Multihull*	
May 29	1100	Spring Series	1	1	Note C
May 30	1100	Spring Series	1	1	Note C
May 31	1100	Spring Series	1	1	Note C
June 19	1100	Single/Double Handed	1	1	Note B
July 3	1000	Summer Series	1	1	Around the Islands Race
July 5	Note A	Summer Series	Note A	Note A	Bayfield Race Week
July 6	Note A	Summer Series	Note A	Note A	Bayfield Race Week
July 7	Note A	Summer Series	Note A	Note A	Bayfield Race Week
July 8	Note A	Summer Series	Note A	Note A	Bayfield Race Week
July 9	Note A	Summer Series	Note A	Note A	Bayfield Race Week
Aug 14	1000	Silver Bay Scramble	1	1	Note B
Sept 4	1030	Fall Series Regatta	1	1	Bill Hulings Around Madeline Race
Sept 5	1100	Fall Series Regatta	1	2	
Sept 6	1100	Fall Series Regatta	1	2	
Sept 25	1100	Dobson Regatta	1	1	
Sept 26	1100	Dobson Regatta	1	1	

\*While MD, JAM, and Multihull Fleets are scheduled to sail one race per day, a second race is allowed at the discretion of the RC and/or OA.

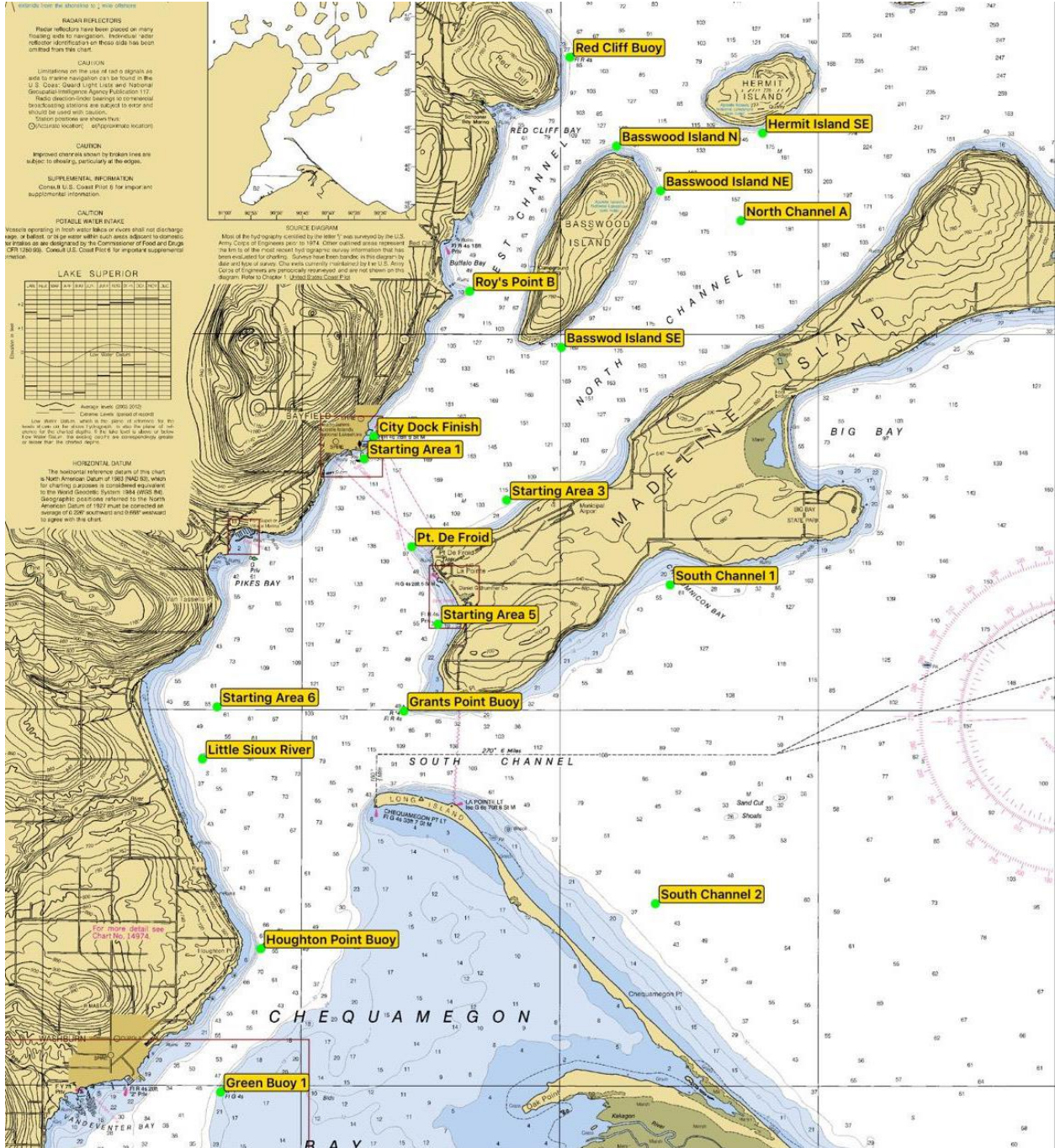
**Note A:** Race schedule (e.g. start times and number of races) during Bayfield Race Week will be specified in Bayfield Race Week Sailing Instructions

**Note B:** Championship Series. AIS Championship Series is open to all yachts that have paid their WYC and AIS fleet dues for the season. The Championship is a summation of the series points awarded for the Spring, Summer and Fall series plus the Dobson regatta. See <http://wyc.org/aisresults> for cumulative Championship Series results and calculation method. The series excludes the Silver Bay Scramble and the Single/Double handed race for all fleets.

**Note C** There will be a 1-day mid-distance race for all fleets during the Series. This race will serve to bring all competitors together on one common course, the exact length of which may be adjusted for some fleets.



## Appendix B – Racing Area

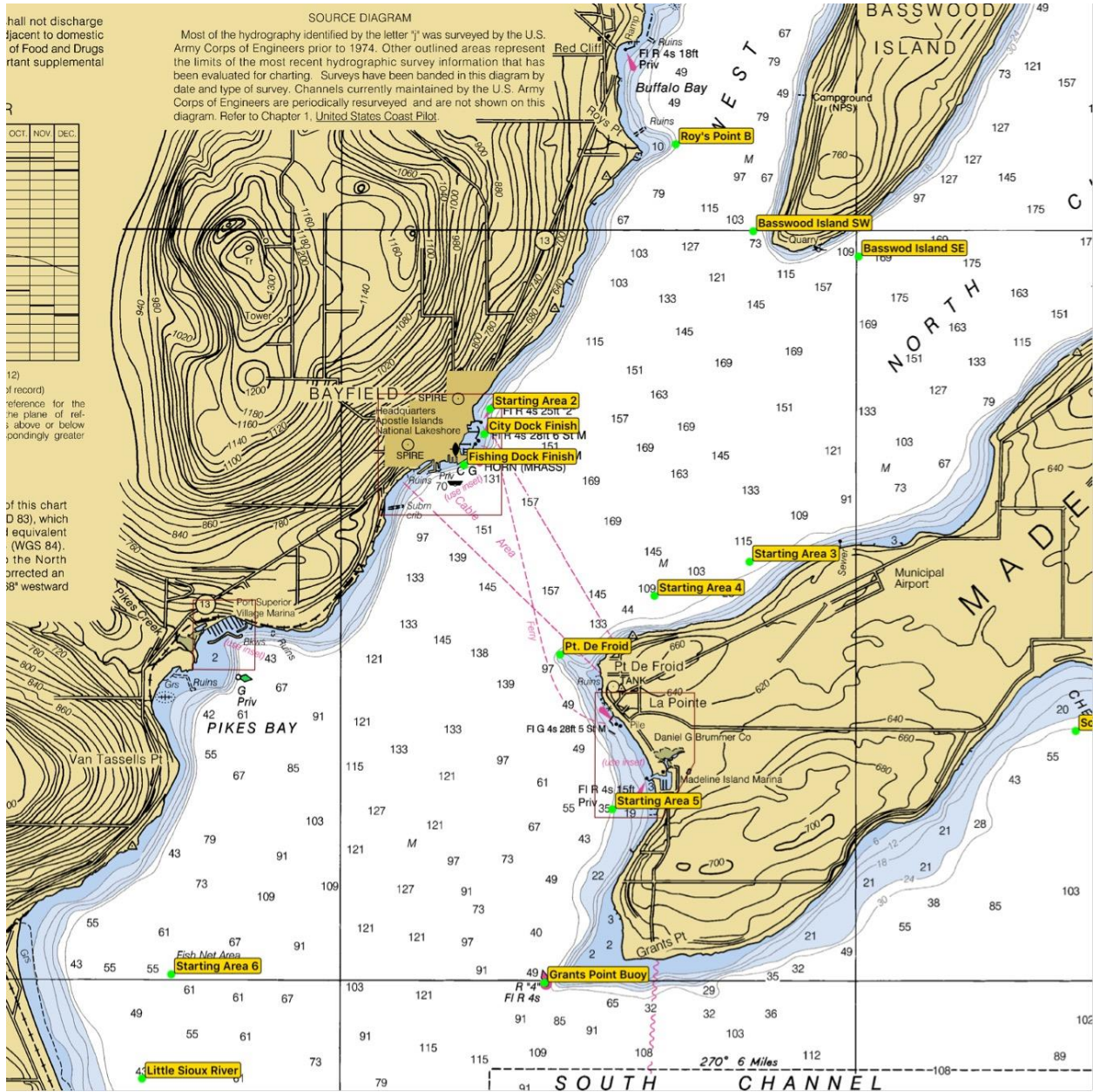


*Note: All Mark locations are approximate.*





## Appendix B – Racing Area



*Note: All Mark locations are approximate.*



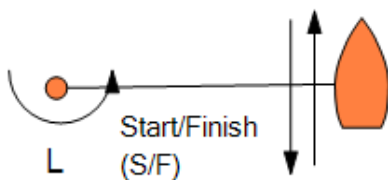
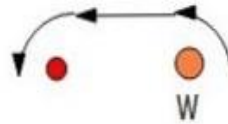


## Appendix B – Waypoint Coordinates

Starting Areas		DMS		DMM	
Waypoint	Description	Latitude	Longitude	Latitude	Longitude
SA1	Starting Area 1 off USCG Station	46°48'19.8"N	90°48'46.7"W	46°48.330'N	90°48.778'W
SA2	Starting Area 2 - N of Bayfield Ferry Dock	46°48'47.9"N	90°48'32.1"W	46°48.798'N	90°48.535'W
SA3	Starting Area 3 off Madeline Island Airport	46°47'46.9"N	90°46'00.9"W	46°47.782'N	90°46.014'W
SA4	Starting Area 4 off Pt. De Froid	46°47'33.3"N	90°46'56.2"W	46°47.555'N	90°46.936'W
SA5	Starting Area 5 off of La Pointe	46°46'08.0"N	90°47'20.7"W	46°46.133'N	90°47.344'W
SA6	Starting Area 6 - South of Pikes Bay	46°45'01.7"N	90°51'37.1"W	46°45.029'N	90°51.618'W
SA7	Starting Area 7 - Sunset Bay	46°48'15.1"N	90°44'13.1"W	46°48.251'N	90°44.218'W
Finish Areas		DMS		DMM	
Waypoint	Description	Latitude	Longitude	Latitude	Longitude
CDF	City Dock Finish	46°48'37.9"N	90°48'35.4"W	46°48.632'N	90°48.590'W
FDL	Fishing Dock Finish	46°48'25.5"N	90°48'47.1"W	46°48.425'N	90°48.786'W
Fixed Government Marks		DMS		DMM	
Waypoint	Description	Latitude	Longitude	Latitude	Longitude
GP	Grants Point Buoy	46°44'58.0"N	90°48'01.0"W	46°44.967'N	90°48.017'W
GB1	Green Bouy 1 - South of Houghton Point	46°39'54.9"N	90°51'33.5"W	46°39.915'N	90°51.558'W
HPB	Houghton Point Buoy	46°41'48.4"N	90°50'45.2"W	46°41.807'N	90°50.754'W
RCB	Red Cliff Buoy	46°53'40.5"N	90°44'47.5"W	46°53.675'N	90°44.791'W
Drop Marks		DMS		DMM	
Waypoint	Description	Latitude	Longitude	Latitude	Longitude
BSE	Basswood Island SE	46°49'49.0"N	90°44'57.3"W	46°49.816'N	90°44.954'W
BS	Basswood Island South Tip	46°49'47.0"N	90°45'41.0"W	46°49.784'N	90°45.683'W
BSW	Basswood Island SW	46°49'59.0"N	90°45'58.8"W	46°49.983'N	90°45.980'W
BNNW	Basswood Island NNW	46°52'22.2"N	90°44'20.7"W	46°52.370'N	90°44.344'W
BN	Basswood Island N	46°52'29.6"N	90°43'53.1"W	46°52.494'N	90°43.886'W
BNNE	Basswood Island NNE	46°52'20.4"N	90°43'18.1"W	46°52.340'N	90°43.301'W
BNE	Basswood Island NE	46°51'53.9"N	90°43'02.0"W	46°51.898'N	90°43.033'W
HSE	Hermit Island SE	46°52'40.0"N	90°41'03.2"W	46°52.666'N	90°41.054'W
LSR	Little Sioux River	46°44'20.1"N	90°51'54.0"W	46°44.335'N	90°51.900'W
NCA	North Channel A	46°51'30.0"N	90°41'28.4"W	46°51.500'N	90°41.474'W
PDF	Point De Froid	46°47'09.8"N	90°47'51.2"W	46°47.163'N	90°47.853'W
RPB	Roy's Point B	46°50'33.7"N	90°46'43.9"W	46°50.562'N	90°46.732'W
SC1	South Channel 1 - Chebomnicon Bay	46°46'39.3"N	90°42'50.9"W	46°46.656'N	90°42.848'W
SC2	South Channel 2 - N of Chequamegon Pt.	46°42'24.9"N	90°43'08.0"W	46°42.415'N	90°43.133'W
SC3	South Channel 3 - 5 nm east of Grants Pt.	46°44'09.1"N	90°40'46.9"W	46°44.152'N	90°40.782'W
Virtual Marks		DMS		DMM	
Waypoint	Description	Latitude	Longitude	Latitude	Longitude
NOMAD	Bill Hulings Around Madeline Race	46°51'00.0"N	90°33'00.0"W	46°51.000'N	90°33.000'W



## Appendix C – Buoy Courses



### Course Examples:

- **W/L 2** = S-W-F
- **W/L 4** = S-W-L-W-F
- **W/L 6** = S-W-L-W-L-W-F

### Course Examples:

- **W/L 2 O** = S-W-O-F (with Offset)
- **W/L 4 O** = S-W-L-W-F (with Offset)
- **W/L 6 O** = S-W-L-W-L-W-F (with Offset)

Any course listed above may be changed to *finish* at the Bayfield Fishing Dock.