



# Maryland Leukemia Cup Regatta CBYRA Sanction #315

Saturday, 4 June 2022

Organizing Authority: Eastport Yacht Club  
Assist By: Annapolis Yacht Club

## Sailing Instructions



### *Annapolis Fleet*

*The notation "[NP]" in a rule means that a boat may not protest another boat for breaking that rule. This changes RRS 60.1(a).*

#### **1 RULES**

- 1.1. The event is governed by the rules as defined in *The Racing Rules of Sailing* (RRS).
- 1.2. Neither spinnakers nor double headsails are permitted in the Leukemia Cruising Class. Entrants with racing experience are not permitted in the Leukemia Cruising Class; they shall participate in other classes. Racing experience is defined as entry and participation in events beyond Maryland Leukemia Cup, CRAB Cup, and/or Hospice Cup.
- 1.3. PHRF N competitors only may use double headsails.

#### **2 CHANGES TO SAILING INSTRUCTIONS**

- 2.1. Any change to the Sailing Instructions (SIs) will be posted before 0800 on the day it will take effect, except that any change to the schedule of races will be posted by 2000 on the day before it will take effect.

#### **3 COMMUNICATIONS WITH COMPETITORS**

- 3.1. For Division A, refer to Attachment A.
- 3.2. For Division B, refer to Attachment B.
- 3.3. For Division C, refer to Attachment C.

#### **4 SIGNALS MADE ASHORE**

- 4.1. Signals made ashore will be displayed at from the EYC flagpole, located on the waterside of the clubhouse.
- 4.2. When flag AP is displayed ashore, '1 minute' is replaced with 'not less than 60 minutes' in Race Signals AP.

#### **5 SCHEDULE OF RACES**

- 5.1. For Division A, refer to Attachment A.
- 5.2. For Division B, refer to Attachment B.
- 5.3. For Division C, refer to Attachment C.





**6 CLASS FLAGS AND ORDER OF START**

- 6.1. For Division A, refer to Attachment A.
- 6.2. For Division B, refer to Attachment B.
- 6.3. For Division C, refer to Attachment C.

**7 FLEET ASSIGNMENTS**

7.1. Fleet assignments, RC assignments, and course information are shown below. Refer to Figure 1 for division locations.

	<b>DIVISION A</b>	<b>DIVISION B</b>	<b>DIVISION C</b>
RC:	EYC	AYC	EYC
Rendezvous:	1AH (FI G, 4.0s)	Horn Point (FI W, 6.0s)	R2 (FI R, 2.5s)
VHF:	73	72	71
	<b>CLASSES</b>	<b>CLASSES</b>	<b>CLASSES</b>
	PHRF B/C ORC Racer J/30 J/105	Harbor 20	Leukemia Cruising PHRF N PHRF Cruiser ORC Cruiser

**8 CHECK IN**

- 8.1. For Division A, refer to Attachment A.
- 8.2. For Division B, refer to Attachment B.
- 8.3. For Division C, refer to Attachment C.

**9 COURSES**

- 9.1. For Division A, refer to Attachment A.
- 9.2. For Division B, refer to Attachment B.
- 9.3. For Division C, refer to Attachment C.

**10 MARKS**

- 10.1. For Division A, refer to Attachment A.
- 10.2. For Division B, refer to Attachment B.
- 10.3. For Division C, refer to Attachment C.

**11 THE START**

- 11.1. For Division A, refer to Attachment A.
- 11.2. For Division B, refer to Attachment B.
- 11.3. For Division C, refer to Attachment C.



## 12 CHANGE OF THE NEXT LEG OF THE COURSE

- 12.1. For Division A, refer to Attachment A.
- 12.2. For Division B, refer to Attachment B.
- 12.3. For Division C, refer to Attachment C.

## 13 THE FINISH

- 13.1. For Division A, refer to Attachment A.
- 13.2. For Division B, refer to Attachment B.
- 13.3. For Division C, refer to Attachment C.

## 14 TIME LIMITS

- 14.1. For Division A, refer to Attachment A.
- 14.2. For Division B, refer to Attachment B.
- 14.3. For Division C, refer to Attachment C.

## 15 HEARING REQUESTS

- 15.1. Scoring Inquiries shall be submitted within the Protest Time Limit.
  - a. Scoring inquiries shall be submitted via the “Online Scoring Inquiry Filing” link found on the Yacht Scoring event main page.
  - b. Scoring inquiries may be resolved via teleconference or video conference.
- 15.2. Protests and Requests for Redress shall be submitted within the Protest Time Limit. Electronic submittal shall be used and is available via the “Owner’s Corner” link found on the Yacht Scoring event main page or via email to [race.committee@eastportyc.org](mailto:race.committee@eastportyc.org). A diagram of the incident, if applicable, cannot be submitted via Yacht Scoring, and should be scanned and emailed to the RC at [race.committee@eastportyc.org](mailto:race.committee@eastportyc.org) prior to the hearing.
- 15.3. The alternative penalty acceptance form (RRS Appendix V2) will be available via the “Documents & Forms” link found on the Yacht Scoring event main page. The form may also be emailed to the Race Committee at [race.committee@eastportyc.org](mailto:race.committee@eastportyc.org).
- 15.4. A boat’s Protest Time Limit is sixty (60) minutes after its RC Signal Vessel dock time. Dock times for all three (3) divisions shall be posted on the Official Notice Board. This posting constitutes the notification required in RRS 61.3. The time limit for a Request for Redress based on an incident in the racing area shall be the Protest Time Limit. This changes RRS 62.2.
- 15.5. The Protest Committee may schedule a hearing prior to the Protest Time Limit if the parties and witnesses are available and have had time to prepare for the hearing. Protest and/or request for redress hearings will be virtual hearings. The parties to a virtual hearing are responsible for having their witnesses, if any, present at the beginning of the hearing. The time and location of each protest hearing will be posted on the Official Notice Board. The Zoom address of each hearing will be communicated by email to each party. Parties and witnesses are encouraged to download and review the Protest Procedure Guidelines & Code of Conduct for Remote Hearings, available via the “Documents & Forms” link found on the Yacht Scoring event main page.





Maryland Leukemia Cup Regatta  
Sailing Instructions  
Annapolis Fleet



## 16 SCORING

- 16.1. For Division A, refer to Attachment A.
- 16.2. For Division B, refer to Attachment B.
- 16.3. For Division C, refer to Attachment C.

## 17 SAFETY REGULATIONS

- 17.1. [DP] [NP] A boat that retires from a race shall notify the RC on their course as soon as possible either by hail on VHF, by phone via the EYC cell phone at (410) 271-7193, or via email at [race.committee@eastportyc.org](mailto:race.committee@eastportyc.org). A voicemail message shall include the approximate time of the message, the skipper's name, boat name, and sail number.
- 17.2. [DP] [NP] A boat shall not exercise right of way, cross in proximity to, or interfere with reasonable transit of the race area by commercial traffic of any kind. Boats must take evasive action well in advance of a potentially dangerous situation. The US Coast Guard, ship captains, and bay pilots have been encouraged to report any incident they observe.
- 17.3. [NP] A boat without way may use any means of propulsion to avoid underway commercial traffic, provided:
  - (a) the boat does not gain an advantage;
  - (b) using the propulsion is the boat's only means of avoiding the commercial traffic; and,
  - (c) the boat submits a report (in writing or by email) to the RC by the protest time limit that describes the incident and the boat's actions.
- 17.4. [NP] The RC or Protest Committee may protest a boat for SIs 17.2 and/or 17.3 based on information received from any source. The protest time limit does not apply. This changes RRS 60.2, RRS 60.3, and RRS 61.3.

## 18 TRASH DISPOSAL

- 18.1. [DP] This is a Clean Regatta; all competitors are strongly encouraged to use multi-use water bottles instead of disposable water bottles, and to recycle whenever possible. A competitor shall not intentionally put trash in the water.

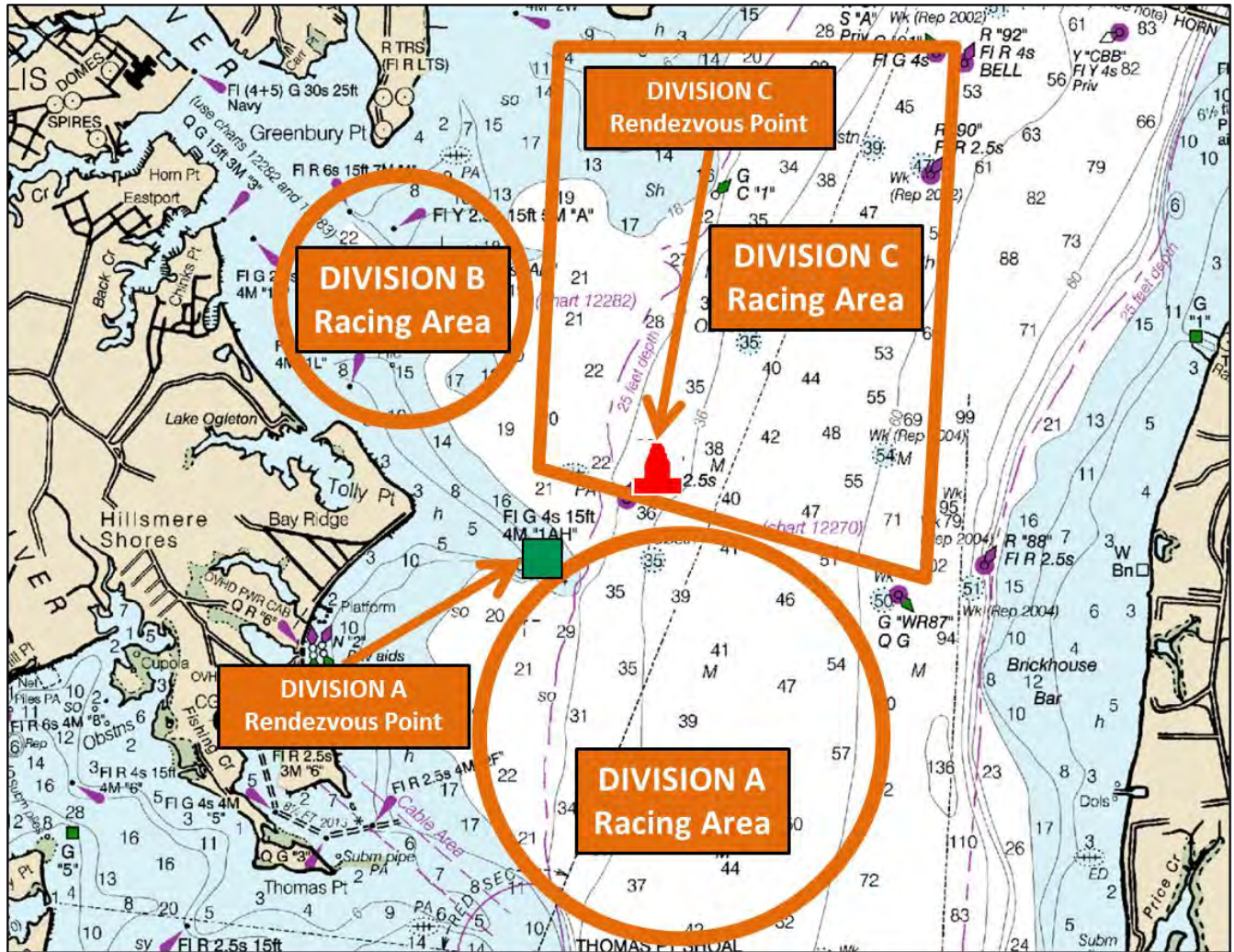


***We are most grateful and appreciative of the support shown by the following sponsors, and hope that you will in turn support them, too!***





# Maryland Leukemia Cup Regatta Sailing Instructions Annapolis Fleet



**FIGURE 1. Divisions A, B, & C Rendezvous Points & Racing Areas**



# ATTACHMENT A

## for the Division A Classes

### A1 COMMUNICATIONS WITH COMPETITORS

- A1.1. The Division A RC will communicate with competitors on VHF channel 73.
- A1.2. Boats are encouraged to contact commercial traffic on VHF channel 13, as required for safety.

### A2 SCHEDULE OF RACES

- A2.1. Three (3) races are scheduled.
- A2.2. The schedule of events for Division A is:
  - Sat, 4 June 0930 Boats shall rendezvous off Tolley Point in the vicinity of "1AH"
  - 1100 Intended Warning Signal for the first class
  - 1530 No Warning Signal after this time

### A3 CLASS FLAGS AND ORDER OF START

- A3.1. Class flags, Warning pennants, and the order of start for the first race are as follows.

CLASS	CLASS FLAG	WARNING PENNANT
J/105	"V"	"1"
ORC Racer	"3"	"2"
J/30 & PHRF B/C	"D" & "6"/"7"	"3"

- A3.2. If a class is not present, its start will be omitted and the next class will start in that place. Subsequent starts may be in a different order to maximize racing for all classes.

### A4 CHECK IN

- A4.1. [DP] [NP] Prior to starting her first race, each boat shall check in by sailing past the stern of the RC Signal Vessel on starboard tack, hail the sail number, and be acknowledged by the RC.

### A5 THE COURSES

- A5.1. The courses will be windward-leeward, as shown in Figure 2 (not to scale), including the approximate angles between legs, the order in which the marks are to be passed, and the side on which each mark is to be rounded or passed.
- A5.2. No later than the Warning Signal, the course to be sailed, the approximate magnetic heading, and the distance to the first mark will be designated by placards displayed on the stern or side of the RC Signal Vessel that is opposite the starting line.



Maryland Leukemia Cup Regatta  
Sailing Instructions  
Annapolis Fleet



- A5.3. When the first mark of the course is to be a change mark, code flag “C” will be displayed by the Signal Vessel before the Warning signal, accompanied by a series of repetitive sound signals.
- A5.4. RC may set a leeward gate. If a leeward gate is placed, boats shall pass between the two marks.

**A6 MARKS**

- A6.1. The marks are as described below.

	<b>Mark Descriptions</b>
<b>Start Mark</b>	Lime Green Tetrahedron
<b>Weather Mark</b>	<b>J/105 &amp; ORC Racer:</b> Large Orange Cylinder <b>J/30 &amp; PHRF B/C:</b> Lime Green Cylinder
<b>Leeward Mark</b>	Large Orange Cylinder
<b>Weather Change Mark</b>	<b>J/105 &amp; ORC Racer:</b> Yellow Tetrahedron <b>J/30 &amp; PHRF B/C:</b> Pink Tetrahedron
<b>Finish Mark</b>	Pink Tetrahedron

**A7 THE START**

- A7.1. The starting line will be between a staff displaying an orange flag on the RC Signal Vessel at the starboard end, and either a staff displaying an orange flag on an anchored RC mark vessel, or the course side of the starting mark at the port end.
- A7.2. Boats whose warning signal has not been made shall remain one-hundred (100) yards clear of the starting area during the starting sequence for other classes.
- A7.3. If any part of a boat’s hull is on the course side of the starting line at her starting signal and she is identified, the RC may attempt to hail her sail number. Failure to hail her number, failure of her to hear such a hail, or the order in which boats are hailed will not be grounds for a redress. This changes RRS 62.1(a).
- A7.5. A boat that does not start within five (5) minutes after her starting signal will be scored Did Not Start without a hearing. This changes RRS A5.1 and A5.2.

**A8 CHANGE OF THE NEXT LEG OF THE COURSE**

- A8.1. To change the next leg of the course, the RC will lay a new mark (or move the finishing line) and remove the original mark as soon as practicable. When in a subsequent change a new mark is replaced, it will be replaced by an original mark.

**A9 THE FINISH**

- A9.1. The finishing line shall be between the staff or halyard on the RC Signal Vessel displaying a blue flag and the course side of the finishing mark.

**A10 TIME LIMITS**

- A10.1. The race for a class shall be abandoned if no boat of that class rounds the first mark of the course (1o or 1g) within thirty (30) minutes of their start.
- A10.2. The race for a class shall be abandoned if no boat of that class sails the course and finishes within one hundred twenty (120) minutes of their start.





Maryland Leukemia Cup Regatta  
Sailing Instructions  
Annapolis Fleet



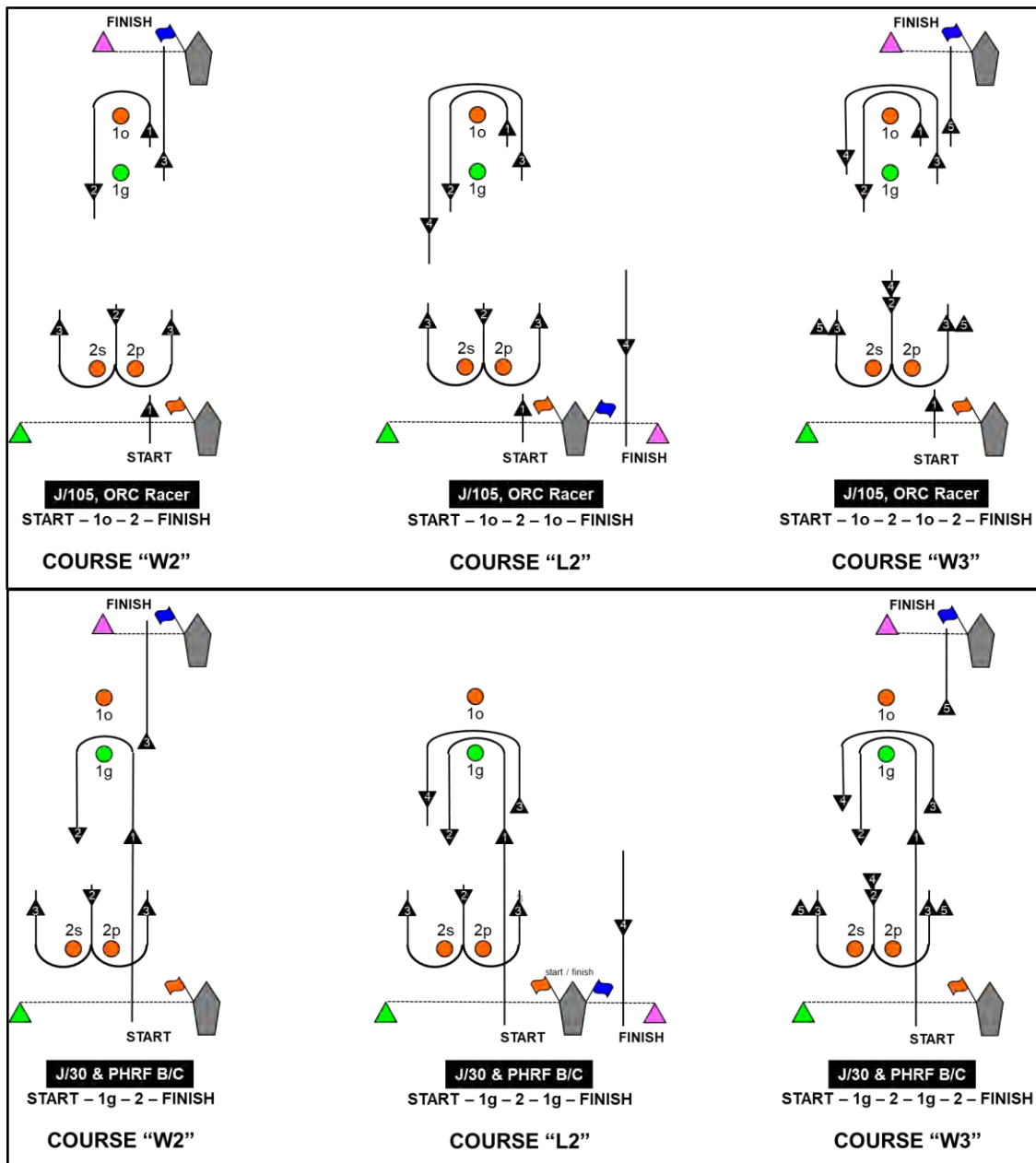
A10.3. If a boat has not finished within twenty (20) minutes of the first boat to finish in her class, she shall be scored Time Limit Expired (TLE). This changes RRS 35, A5.1, A5.2, and A10.

**A11 SCORING**

A11.1. One (1) scored race is required to constitute a series.

A11.2. A boat's series score will be the total of her race scores.

A11.3. A boat scored TLE shall be scored points for the finishing place two (2) more than the points scored by the last boat that finished within the Finishing Window. This changes RRS 35, A5.1, A5.2, and A10.



**FIGURE 2. Division A Course Diagrams and Descriptions**







# ATTACHMENT B

## for the Division B Classes

### **B1 COMMUNICATIONS WITH COMPETITORS**

- B1.1. The Division B RC will communicate with competitors on VHF channel 72.
- B1.2. Boats are encouraged to contact commercial traffic on VHF channel 13, as required for safety.

### **B2 SCHEDULE OF RACES**

- B2.1. Three (3) races are scheduled.
- B2.2. The schedule of events for Division B is:

Sat, 4 June	1000	RC Signal Vessel arrives in the racing area
	1100	Intended Warning Signal for the first class
	1530	No Warning Signal after this time

### **B3 CLASS FLAGS AND ORDER OF START**

- B3.1. Class flags are not required for any classes in this division.

### **B4 CHECK IN**

- B4.1. [DP] [NP] Prior to starting, each boat shall check in by sailing past the stern of the RC Signal Vessel on starboard tack, hail the sail number, and be acknowledged by the RC.

### **B5 THE COURSES**

- B5.1. The courses will be windward-leeward, as shown in Figure 3 (not to scale), including the approximate angles between legs, the order in which the marks are to be passed, and the side on which each mark is to be rounded or passed.
- B5.2. No later than the Warning Signal, the course to be sailed, the approximate magnetic heading, and the distance to the first mark will be designated by placards displayed on the stern or side of the RC Signal Vessel that is opposite the starting line.
- B5.3. When the first mark of the course is to be a change mark, code flag "C" will be displayed by the Signal Vessel before the Warning signal, accompanied by a series of repetitive sound signals.
- B5.4. If only one gate mark is set, boats shall round the single mark to port.





**B6 MARKS**

B6.1. The marks are described below.

	<b>Mark Descriptions</b>
<b>Start Mark</b>	Yellow Inflatable
<b>Weather Mark</b>	Red Inflatable
<b>Weather Mark Offset</b>	Red Inflatable
<b>Leeward Mark(s)</b>	Red Inflatable
<b>Weather Change Mark</b>	Red Inflatable w/ Dark Band
<b>Finish Mark</b>	Yellow Inflatable

**B7 THE START**

- B7.1. The starting line will be between a staff displaying an orange flag on the RC Signal Vessel at the starboard end, and the course side of the starting/finishing mark at the port end.
- B7.3. Boats whose warning signal has not been made shall avoid the starting area during the starting sequence for other classes.
- B7.4. If any part of a boat's hull is on the course side of the starting line at her starting signal and she is identified, the race committee will attempt to hail her sail number. Failure to hail her number, failure of her to hear such a hail, or the order in which boats are hailed will not be grounds for a for request for redress. This changes RRS 62.1(a).
- B7.5. A boat that does not start within five (5) minutes after her starting signal will be scored Did Not Start without a hearing. This changes RRS A5.1 and A5.2.

**B8 CHANGE OF THE NEXT LEG OF THE COURSE**

- B8.1. To change the next leg of the course, the RC will lay a new mark (or move the finishing line) and remove the original mark as soon as practicable. When in a subsequent change a new mark is replaced, it will be replaced by an original mark.
- B8.2. When the original mark is replaced, mark 1a is no longer a mark of the course.

**B9 THE FINISH**

- B9.1. The finishing line shall be between the staff or halyard on the RC Signal Vessel displaying a blue flag and the course side of the finishing mark.

**B10 TIME LIMITS**

- B10.1. The race for a class shall be abandoned if no boat of that class rounds Mark 1 within thirty (30) minutes of their start.
- B10.2. The race for a class shall be abandoned if no boat of that class sails the course and finishes within ninety (90) minutes of their start.
- B10.3. If a boat has not finished within twenty (20) minutes of the first boat to finish in her class, she shall be scored Time Limit Expired (TLE). This changes RRS 35, A5.1, A5.2, and A10.

**B11 SCORING**

- B11.1. One (1) scored race is required to constitute a series.

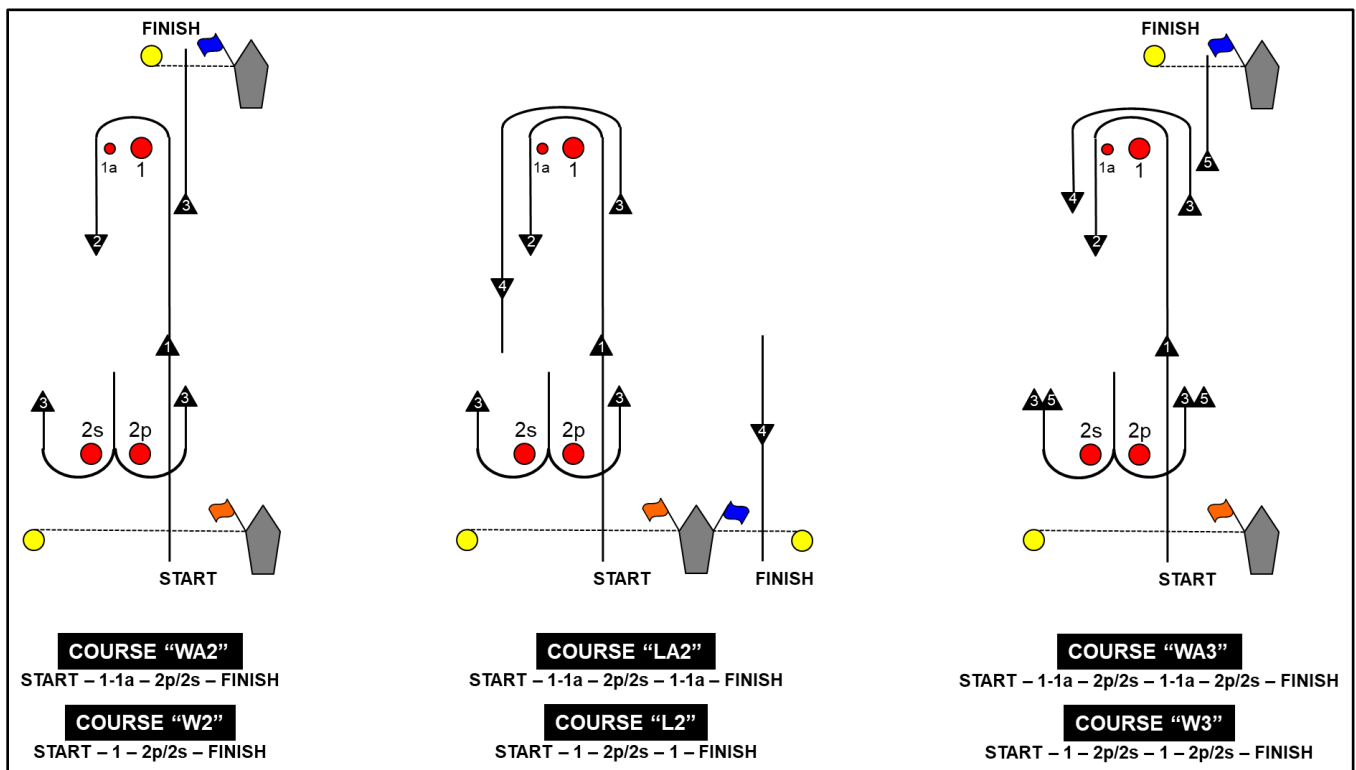




Maryland Leukemia Cup Regatta  
Sailing Instructions  
Annapolis Fleet



- B11.2. A boat's series score will be the total of her race scores.
- B11.3. A boat scored TLE shall be scored points for the finishing place two (2) more than the points scored by the last boat that finished within the time limit. This changes RRS 35, A5.1, A5.2, and A10.



**FIGURE 3. Division B Course Diagrams & Descriptions**



# ATTACHMENT C

## For the DIVISION C Classes

### C1 COMMUNICATIONS WITH COMPETITORS

- C1.1. The Division C RC will communicate with competitors on VHF channel 71.
- C1.2. Boats are encouraged to contact commercial traffic on VHF channel 13, as required for safety.

### C2 SCHEDULE OF RACES

- C2.1. One (1) race is scheduled.
- C2.2. The schedule of events for Division C is:
 

Fri, 3 June	1700	Individual start times for the pursuit race posted
Sat, 4 June	1000	Boats shall rendezvous in the vicinity of "R2" (FI R, 2.5s)
	1100	Intended Warning Signal for the first class
	1400	No Warning Signal after this time

### C3 CLASS FLAGS AND ORDER OF START

- C3.1. Boats shall display from the backstay their class flag.
 

Leukemia Cruising	none required
PHRF N	pennant "5"
PHRF Cruiser	none required
ORC Cruiser	pennant "3"
- C3.2. Competitors in the pursuit race (Leukemia Cruising, PHRF N, and PHRF Cruiser) will be started first. RC will perform a separate start sequences for the ORC Cruiser class.

### C4 CHECK IN

- C4.1. [DP] [NP] Boats in Division C should not attempt to check in with the RC Signal Vessel.

### C5 THE COURSE

- C5.1. All Division C classes will sail the same course.
- C5.2. [DP] A boat shall not cross the finish line until she is completing the last leg of the course. When the finishing line is closed it is an obstruction. A boat that breaks this rule shall not correct her error; however, she will be exonerated if she takes a One-Turn Penalty (see RRS 44.2). This changes RRS 28.1.





Maryland Leukemia Cup Regatta  
Sailing Instructions  
Annapolis Fleet



**C6 MARKS**

C6.1. Marks that may be used are identified immediately below. Refer to Figure 4.

	<b>CHART DESIGNATION</b>	<b>LIGHT</b>	<b>APPROXIMATE LOCATION</b>
1	Y "AN"	Fl Y, 4.0s	N 38° 57.81' / W 076° 26.81'
2	GC1	none	N 38° 58.19' / W 076° 24.86'
3	G91	Fl G, 4.0s	N 38° 58.99' / W 076° 23.28'
4	WR87	Q G	N 38° 55.97' / W 076° 23.55'
5	R2	Fl R, 2.5s	N 38° 56.50' / W 076° 25.56'
6	Pink Inflatable Cylinder	none	N 38° 56.26' / W 076° 25.36'

C6.2. Marks shall be rounded in the order defined in the course that is posted in accordance with SI C2.2., reading from left to right. Marks designated in "**RED**" shall be rounded to port; marks designated in "**GREEN**" shall be rounded to starboard.

**C7 THE START**

C7.1. The start line shall be between a staff displaying an orange flag on the RC Signal Vessel and R2 (Fl R, 2.5s).

**C7.2. LEUKEMIA CRUISING, PHRF N, & PHRF CRUISER Classes**

C7.2.1. This shall be a pursuit race with a reverse PHRF Time over Distance (ToD) starting order. The boat with the slowest (highest) rating shall start first and the fastest (lowest) rating shall start last.

C7.2.2. The RC shall signal the starting sequence as follows (this changes RRS 26):

TIME	SIGNAL	FLAG / SOUND
1100	Warning signal for all boats	Raise large EYC burgee with 1 sound
1101	Preparatory signal for the first boat to start	Raise code flag "P" with 1 sound
1104		Lower code flag "P" with a long sound
1105	Starting signal for the first boat to start	Lower large EYC burgee and briefly raise number pennant "0" with 1 sound
Each Subsequent start time	Starting signal for remaining boats	Briefly raise number pennant "0" with 1 sound

C7.2.3. A boat's individual preparatory signal is four (4) minutes prior to her individual scheduled start. After the first boat has started, there will be no visual signal or sound for any subsequent preparatory signal. This changes RRS 26.

C7.2.4. The start times for all boats shall be based on their PHRF ToD Circular Random handicap. The race shall use GPS time synchronization. The RC will attempt to broadcast a five (5) second countdown for each starting time on VHF channel 71. Failure of the RC to announce a start time will not be grounds for redress. This changes RRS 41 and 62.1(a).

C7.2.5. After the Warning signal for the first start, boats shall stay clear of the starting area until four (4) minutes before their scheduled starting time.

C7.2.6. In the event a postponement is signalled on the water, the RC shall announce the revised start times on VHF channel 71 before lowering the postponement flag.





Maryland Leukemia Cup Regatta  
Sailing Instructions  
Annapolis Fleet



**C7.3. ORC CRUISER Class**

- C7.3.1. The RC will attempt to signal the ORC CRUISER class start sequence as soon as possible after completing the start of all boats in the LEUKEMIA CRUISING, PHRF N, and PHRF CRUISER classes pursuit race. The RC shall signal a wakeup call with multiple sounds, approximately one (1) minute prior to the Warning signal.
- C7.3.2. The start shall be in accordance with RRS 26.

**C8 RECALLS**

**C8.1. LEUKEMIA CRUISING, PHRF N, & PHRF CRUISER Classes**

- C8.1.1. If any part of a boat's hull, crew or equipment is on the course side of the starting line at her starting signal and she is identified, she shall be considered On Course Side (OCS). She shall not attempt to clear herself, start, or restart, and shall, instead, sail to the first mark. The RC will attempt to broadcast her sail number on VHF channel 71. Flag X will not be used. This changes RRS 29.1.
- C8.1.2. [DP] [NP] A boat that is scored OCS shall, without a hearing, be penalized by having ten (10) minutes plus the amount of time that she was over early added to her elapsed time. In RRS 28, the word "start" is replaced with "start or take a penalty in accordance with SI C8.1.2.". This changes RRS 28, 63.1, A4, and A5.
- C8.2. For the ORC CRUISER class, the RC intends to hail on VHF channel 71 after the starting signal the sail number(s) of boats that are OCS. The failure of any boat to hear the hail, the timeliness of the hail of OCS boats, failure to hail any boats, and the order of the boats in the hail shall not be grounds for granting redress. This changes RRS 41 and 62.1(a).

**C9 CHANGE OF THE NEXT LEG OF THE COURSE**

- C9.1. A change of the next leg of the course is not permitted.

**C10 THE FINISH**

- C10.1. The finishing line will be between the staff displaying a blue flag and the course side of the finishing mark.
- C10.2. The RC may shorten the course at any rounding mark in accordance with RRS 32.

**C11 TIME LIMITS**

- C11.1. The race time limit is 1600 hours.
- C11.2. If a boat in a class has sailed the course within the race time limit, all other boats in that class will be scored. Those that finished within the time limit will be scored in their finishing order. Those who have not finished within the time limit will be scored Time Limit Expired (TLE). This changes RRS 35, A5.1, A5.2, and A10.

**C12 SCORING**

- C12.1. For the LEUKEMIA CRUISING, PHRF N, and PHRF CRUISER, classes, handicap ratings will be in accordance with the PHRF Circular Random Time over Distance rating, and boats will be scored in the order of finish.
- C12.2. For the ORC CRUISER class, boats will be scored per the ORC system.

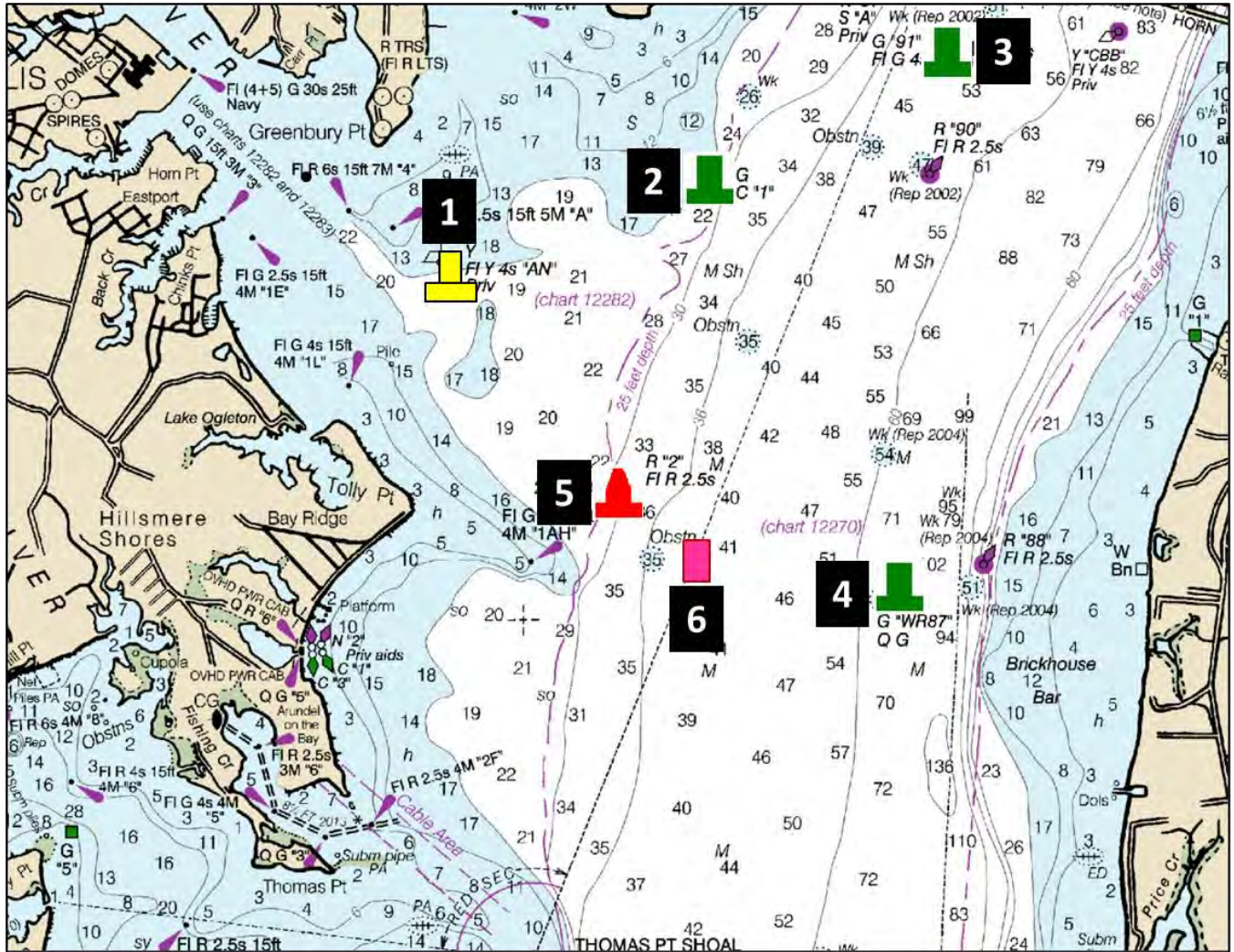




# Maryland Leukemia Cup Regatta Sailing Instructions Annapolis Fleet



C12.3. Boats to be scored TLE and not thereafter retiring, being penalized or given redress will be scored points equal to the number of boats finishing within the time limit plus two (2) points by the RC without a hearing. This changes RRS A4.2 and A5.



**FIGURE 4. Marks for the Division C Classes**