



2022 LAKESIDE REGATTA

RUHLMAN for RAINBOW and GULDEN/MCCARTY RACE

July 23 & 24, 2022

The Notice of Race is contained within these Sailing Instructions.
The following instructions apply to all boats participating in the Regatta.

1. RULES

- 1.1. All races will be governed by the current *Racing Rules of Sailing* (RRS); the prescriptions of US SAILING; the rules of the participating classes, except as any of these are changed by these Sailing Instructions (SI). PHRF rules will apply to all PHRF and JAM rated boats.
- 1.2. Rule 29.2 (**General Recall**) is changed to postpone the start of any recalled division(s) to the end of the start sequence, as specified in SI 12.2.

2. ENTRIES

- 2.1. This regatta is open to yachtsmen and yachtswomen from recognized Yacht Clubs.
- 2.2. Eligible boats shall be entered by completing registration at yachtscoring.com.
- 2.3. Eligibility and placement within divisions shall be determined by the Race Committee (hereafter RC), whose decision is final. PHRF handicaps will be used. These will be posted per SI 3, no later than the Skipper's meeting on Saturday morning.

3. NOTICES TO COMPETITORS

- 3.1. Notices to competitors will be posted on the Official Notice Board (ONB) located on the Lounge Window.

4. CHANGES IN SAILING INSTRUCTIONS

- 4.1. Any change to the SI's will be posted at least ½ hour before the warning signal of the first race on the day it will take effect, except that any change in the schedule of races will be posted by 8:00 AM on the day it will take effect.

5. SIGNALS MADE ASHORE

- 5.1. Signals made ashore will be displayed from the RC boat.
- 5.2. Flag "AP" with two sounds means the race is postponed. When postponed ashore, the first Warning Signal will be made not less than 60 minutes after "AP" is lowered.
- 5.3. Protest Time shall be 1 Hour after the RC Boat docks. The dock time will be posted on the ONB.

6. SCHEDULE OF RACES

- 6.1. **Sat. July 23, 2022, Warning 10:55am.** All races are back-to-back.
- 6.2. **Sun. July 24, 2022, Warning 9:55am** **Gulden-McCarty** Distance Race
- 6.3. **NO WARNING WILL BE MADE AFTER 1:00 PM ON SUNDAY.** One Race will constitute the event.



For the benefit of:





7. CLASS FLAGS

7.1. Class flags and normal start sequences and scratch sheets will be posted on the ONB and available online at yachtscoring.com

8. RACING AREA

8.1. Racing will take place on Lake Erie near or north of the Cleveland Harbor East End.

9. COURSES

9.1. See Attachments #1 and #2a&b.

9.2. The Sunday Gulden-McCarty Race will use the LYC fixed marks and possibly the Crib.

9.3. No later than the Warning Signal the approximate bearing from the starting line to Marks 1&J will be displayed from the RC Signal Boat.

10. MARKS

10.1. All marks will be inflatable tetrahedrons, balls and/or cylinders except for a Distance Race, which shall use LYC fixed marks and possibly the Crib. See Attachments #1 and #2a&b.

11. The START

11.1. Races will be started in accordance with RRS 26. In the Distance Race, we may opt for a Pursuit Start.

11.2. The starting line will be between the **ORANGE FLAG** on a RC Signal Boat at the starboard end and a **YELLOW MARK** on the port end.

11.3. Boats whose Warning Signal has not been made **SHALL** keep clear of the starting area and of all boats whose warning signals have been made.

11.4. A boat shall not start later than five (5) minutes after her starting signal and will be scored Did Not Start (DNS) without a hearing. This changes RRS A4 and A5.

12. RECALLS

12.1. Individual and General Recalls will be signaled in accordance with RRS 29. The RC will attempt to hail boats that have not started properly on VHF Channel 78A. This changes RRS 62.1.

12.2. General recalls will be signaled as prescribed in RRS, except as follows:

12.2.1. After a General Recall, the recalled class shall immediately clear the starting area.

12.2.2. The recalled class will drop to the end of the starting sequence and start after the last scheduled start.

12.2.3. All recalled classes will start in the same order as originally scheduled.

12.2.4. Class start flags will designate the next class to start as per rule 26.

13. CHANGE OF COURSE AFTER THE START

13.1. A change of course after the start will be signaled before the leading boat has begun the changed leg, although the new mark may not then be in position.

13.2. During a change of course, the class flag of the class, or classes, whose course is being



For the benefit of:





changed may be flown with the change of course flag ("C"). If there is no class flag flown, the change is applicable to all classes excluding JAM.

13.3. After setting the new mark, the RC will attempt to lift the original mark as soon as possible. Marks to be passed subsequently may be relocated to maintain course configuration.

14. COURSE SHORTENING

14.1. The Race may be shortened at any rounding mark in accordance with the RRS.

14.2. If the boat signaling the race shortening is displaying **any class flag** the race is shortened **only for those classes** whose class flag is displayed. If **no class flags** are displayed the race is shortened for **all classes**.

15. THE FINISH

15.1. Unless the course is shortened, the Finish Line will be between a staff displaying the **BLUE FLAG** on the RC Boat and an **ORANGE MARK** placed to the starboard side of the RC boat.

15.2. For any Distance Race, the FINISH will be between the LYC S/F Mark and the FCYC Staring Shack.

15.3. Boats which retire from a race for any reason **MUST** report their action as soon as possible to the RC. This report may be made by VHF Channel 78A, in person to one of the RC Boats, or by phone or in person to the LYC office. Failure to inform the RC after retiring may result in disqualification from the event.

16. TIME LIMIT

16.1. The Time Limit (TL) to the first mark is one (1) hour. The TL is two (2) hours for each closed course race. The TL for the distance race is three (3) hours.

16.2. If no boat in a division finishes within its TL, that race shall be abandoned. If at least one boat finishes within the TL, all boats in that division that finish within thirty (30) minutes of the first boat will be scored in their order of finish. Any boats in that division still racing at the end of the TL + 30 minutes will be scored TLE (time limit expired) as the number of finishers +1, without a hearing. For the distance race, boats finishing after TLE + 60 minutes will be scored TLE. This changes RRS 35, 63.1, A4 and A5.

17. PROTESTS

17.1. Protests shall be made as defined in RRS 60 and 61. Boats intending to protest **SHALL, immediately** after finishing or retiring, notify the RC Boat of their intent to protest and provide the sail numbers of boats protested.

17.2. Protests shall be written on Protest Forms available at the LYC Office and shall be delivered to the LYC office within **one hour after the RC Boat has docked** as per SI 5.3.

17.3. Protests will be heard at the Protest Office approximately in the order received, and as soon as possible.

17.4. Protest notices will be posted on the ONB shortly after Protest Time ends to inform competitors of hearings in which they are parties to or named as witnesses.



For the benefit of:





17.5. Protests delivered on the last day of the event, which do not involve award winners, may be heard after the awards presentation.

17.6. A copy of the completed protest will be posted on the ONB after the protest hearing.

18. SCORING

18.1. The Low-Point Scoring System, RRS A4, will apply.

18.2. There will be no throw outs. One race will constitute the event.

19. RADIO COMMUNICATIONS

19.1. All radio communications between the RC and competitors shall be on VHF 78A.

19.2. Any communications between RC personnel or boats which may be overheard by competitors shall not be grounds for redress or protest. The RC has no obligation to communicate by above VHF radio.

20. AWARDS

20.1. Boats shall receive awards consistent with the numbers in their respective Classes for the series, not to exceed 3 places.

Many Thanks to our Major Sponsors:



The connection you can count on.



And remember... "It's for The Babies..."

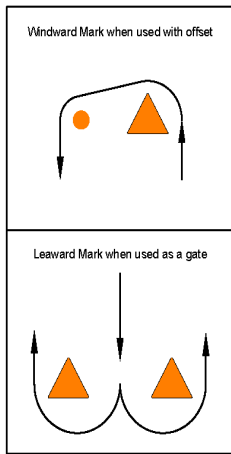


For the benefit of:

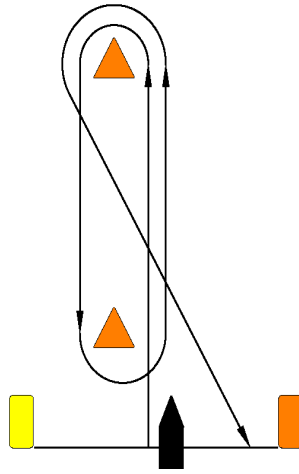




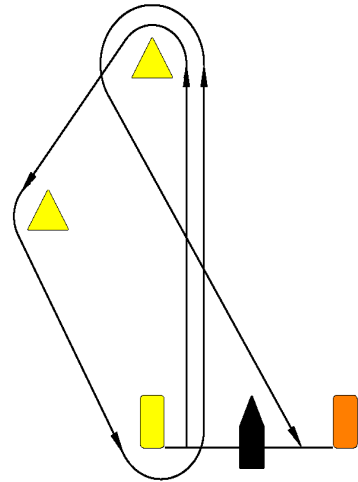
Attachment #1



COURSE "B"



COURSE "D"

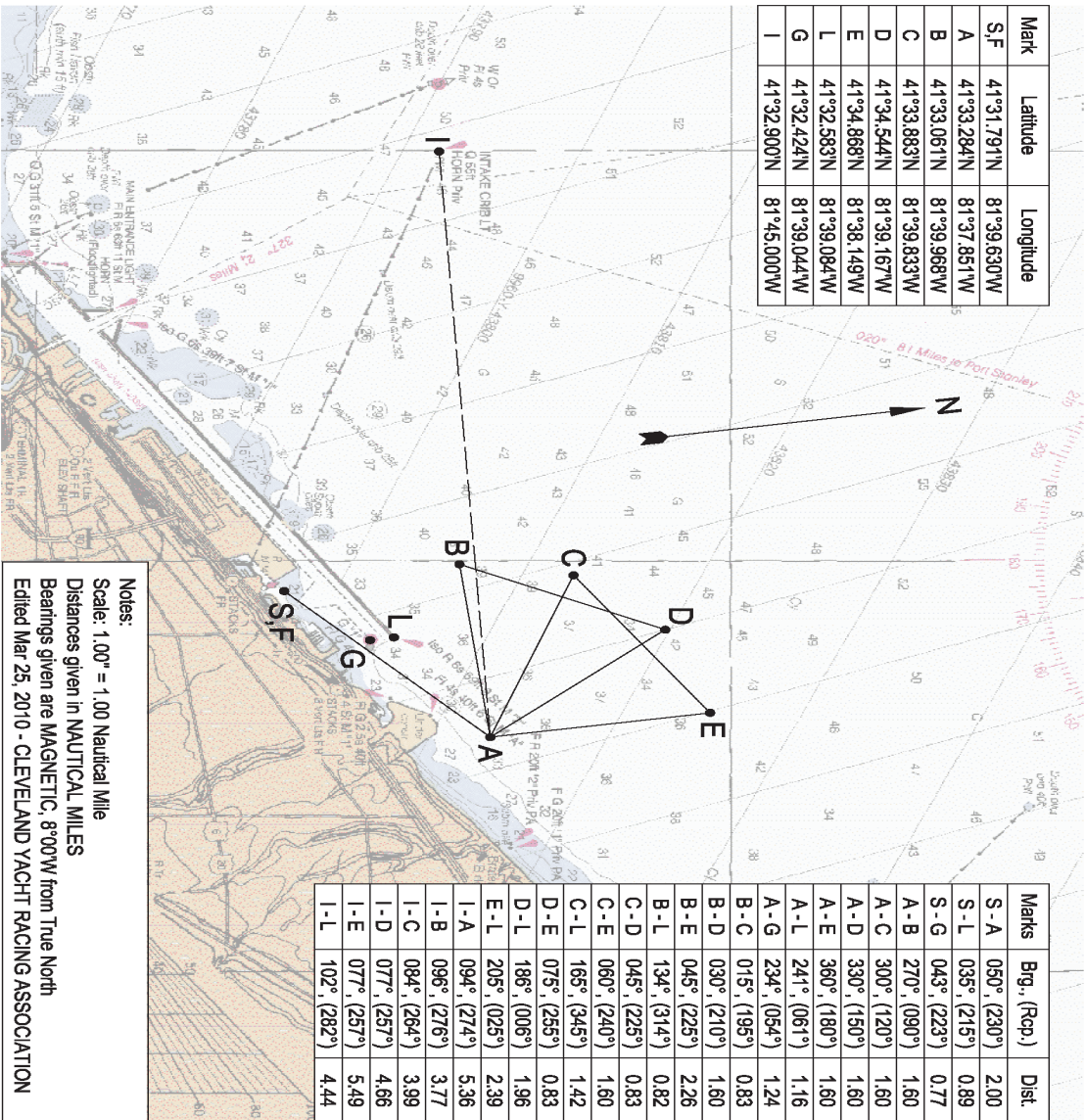


This diagram is not necessarily indicative of shapes, but the mark colors are accurate.





Attachment #2a



any use originating on any use to which of similar presentation without the express and clear consent of the Cleveland Yacht Racing Association

Edited May 8, 2014 - CLEVELAND YACHT RACING ASSOCIATION

| 3 | Std. Course Length, nmi | "N" Course Length, nmi |
|---|-------------------------|------------------------|
| | 1.54 | N/A |
| | 4.00 | N/A |
| | 7.20 | 5.31 |
| | 7.20 | 5.91 |
| | 7.20 | 6.45 |
| | 7.20 | 6.88 |
| | 8.80 | 8.05 |
| | 8.80 | 8.48 |
| | 8.80 | 6.91 |
| | 8.80 | 7.51 |
| | 12.00 | 10.11 |
| | 12.00 | 10.71 |
| | 12.00 | 11.25 |
| | 12.00 | 11.68 |
| | 12.00 | 11.25 |
| | 12.00 | 11.68 |
| | 12.00 | 10.11 |
| | 12.00 | 10.71 |
| | 12.00 | 11.25 |
| | 12.00 | 11.68 |
| | 12.00 | 10.11 |
| | 12.00 | 10.71 |

Attachment #2b

(s) - Leave Mark to Starboard
 Bearings shown are Magnetic
 description of the last mark.
 y are official even though they
 thrown out.



Attachment 2B.

CYRA RACE COURSES

| Course | Mark 1 | Mark 2 | Mark 3 | Mark 4 | Mark 5 | Mark 6 | Mark 7 | Mark 8 | Std. Course Length, nmi | "N" Course Length, nmi |
|--------|--------|------------|--------------|------------|------------|------------|------------|------------|-------------------------|------------------------|
| 0 | S (p) | G (p) 043° | F (s) 223° | | | | | | 1.54 | N/A |
| 1 | S (p) | A (p) 050° | F (s) 230° | | | | | | 4.00 | N/A |
| 2 | S (p) | A (p) 050° | B (p) 270° | A (s) 090° | F (s) 230° | | | | 7.20 | 5.31 |
| 3 | S (p) | A (p) 050° | C (p) 300° | A (s) 120° | F (s) 230° | | | | 7.20 | 5.91 |
| 4 | S (p) | A (p) 050° | D (p) 330° | A (s) 150° | F (s) 230° | | | | 7.20 | 6.45 |
| 5 | S (p) | A (p) 050° | E (p) 360° | A (s) 180° | F (s) 230° | | | | 7.20 | 6.88 |
| 6 | S (p) | A (p) 050° | B (s**) 270° | D (s) 030° | A (s) 150° | F (s) 230° | | | 8.80 | 8.05 |
| 7 | S (p) | A (p) 050° | C (s**) 300° | E (s) 060° | A (s) 180° | F (s) 230° | | | 8.80 | 8.48 |
| 8 | S (p) | A (p) 050° | D (p) 330° | B (p) 210° | A (s) 090° | F (s) 230° | | | 8.80 | 6.91 |
| 9 | S (p) | A (p) 050° | E (p) 360° | C (p) 240° | A (s) 120° | F (s) 230° | | | 8.80 | 7.51 |
| 10 | S (p) | A (p) 050° | B (s) 270° | D (s) 030° | A (s) 150° | B (s) 270° | A (s) 090° | F (s) 230° | 12.00 | 10.11 |
| 11 | S (p) | A (p) 050° | C (s) 300° | E (s) 060° | A (s) 180° | C (s) 300° | A (s) 120° | F (s) 230° | 12.00 | 10.71 |
| 12 | S (p) | A (p) 050° | D (p) 330° | B (p) 210° | A (s) 090° | D (p) 330° | A (s) 150° | F (s) 230° | 12.00 | 11.25 |
| 13 | S (p) | A (p) 050° | E (p) 360° | C (p) 240° | A (s) 120° | E (p) 360° | A (s) 180° | F (s) 230° | 12.00 | 11.68 |
| 14 | S (p) | A (p) 050° | B (s) 270° | D (s) 030° | B (s) 210° | D (s) 030° | A (s) 150° | F (s) 230° | 12.00 | 11.25 |
| 15 | S (p) | A (p) 050° | C (s) 300° | E (s) 060° | C (s) 240° | E (s) 060° | A (s) 180° | F (s) 230° | 12.00 | 11.68 |
| 16 | S (p) | A (p) 050° | D (p) 330° | B (p) 210° | A (s) 090° | B (p) 270° | A (s) 090° | F (s) 230° | 12.00 | 10.11 |
| 17 | S (p) | A (p) 050° | E (p) 360° | C (p) 240° | A (s) 120° | C (p) 300° | A (s) 120° | F (s) 230° | 12.00 | 10.71 |
| 18 | S (p) | A (p) 050° | B (s) 270° | D (s) 030° | A (s) 150° | D (s) 330° | A (s) 150° | F (s) 230° | 12.00 | 11.25 |
| 19 | S (p) | A (p) 050° | C (s) 300° | E (s) 060° | A (s) 180° | E (s) 360° | A (s) 180° | F (s) 230° | 12.00 | 11.68 |
| 20 | S (p) | A (p) 050° | D (p) 330° | B (p) 210° | D (p) 030° | B (p) 210° | A (s) 090° | F (s) 230° | 12.00 | 10.11 |
| 21 | S (p) | A (p) 050° | E (p) 360° | C (p) 240° | E (p) 060° | C (p) 240° | A (s) 120° | F (s) 230° | 12.00 | 10.71 |
| 22 | | | | | | | | | | |
| 23 | | | | | | | | | | |

**If the course is shortened from this mark, rounding is to port

(p) - Leave Mark to Port

(s) - Leave Mark to Starboard
Bearings shown are Magnetic

Notes:

1. If the letter "A" is shown above the course number, Mark A is missing.
2. If the letter "N" is shown above the course number, substitute Mark L (East Light) for Mark A in the course description of the last mark.
All mark roundings remain as described for the course. Mark A continues to be the first turning mark.
3. All courses and distances have been calculated on ideal placement. It shall be the rule of the CYRA that they are official even though they may be slightly off due to drift or minor placement errors. Only significant deviation will justify the race being thrown out.