

CAPTAIN HARBOR FRIDAY NIGHT SERIES

Presented by:
BHC, IHYC, OGYC, RYC



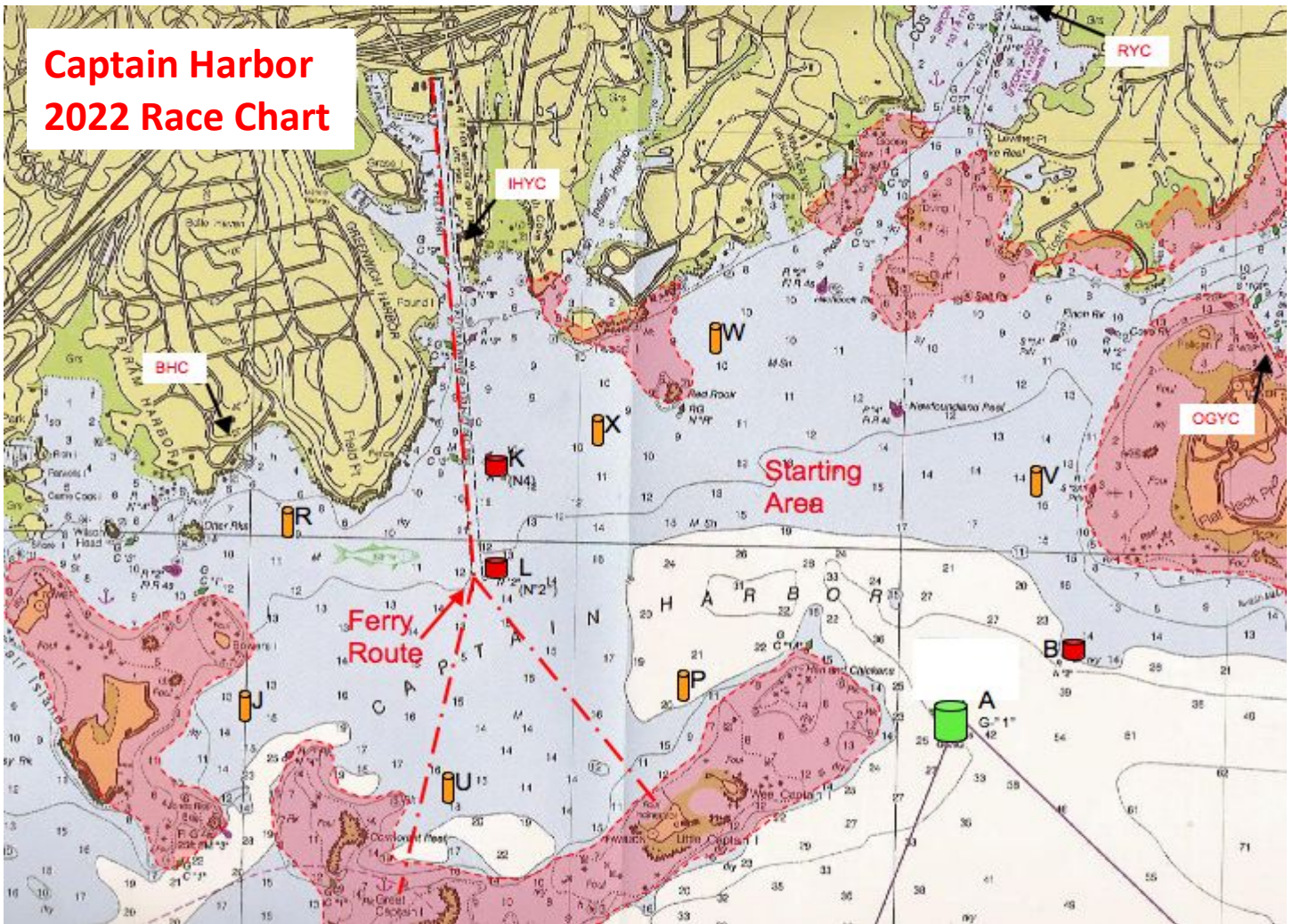
2022 Sailing Instructions

- RULES** This series will be governed by the Racing Rules of Sailing and the YRALIS Non-spinnaker Rules, and RRS Appendix V modified as follows:
- Oral changes to the sailing instructions may be made on the water per RRS 90.2(c) by hoisting Code Flag L on the Signal Vessel and making announcements on VHF channel 65A.
- SCHEDULE** This series will consist of four races each hosted by one of the four presenting clubs: June 3rd Riverside Yacht Club, June 17th Indian Harbor Yacht Club, July 8th Old Greenwich Yacht Club, July 22nd Belle Haven Club.
- First Warning @1855 each day
- ELIGIBILITY** Only vessels owned or under charter by members of the presenting clubs with a 2022 YRALIS PHRF certificate are eligible to compete.
- SAILS** No spinnakers, gennakers or bloopers. No more than one sail at a time in the foretriangle except during a seaman-like sail change. Whisker pole or spinnaker pole may be used. When in use, it shall be attached to the foremost mast.
- ENTRY & FEE** All vessels shall register on-line at: www.yachtscoring.com, the entry fee is \$10.00. Vessels not registered will be assigned a rating of -99 and scored accordingly.
- TEAMS** Three-vessel teams can be declared using the supplemental form (found on the www.yachtscoring.com event page) no later than June 2nd, 2022.
- CLASSES**
- | Class | Class Flag | PHRF Rating |
|-------|-------------------|-------------|
| I | Numeral pennant 1 | 83 & Lower |
| II | Numeral pennant 2 | 84 to 132 |
| III | Numeral pennant 3 | 133 & above |
- Scratch sheets will be published by noon, June 3rd on Yacht Scoring. The Race committee may change the rating bands and assignments on or before June 3rd.
- RACING AREA** Races will be held inside Captain Harbor.
- MARKS** Marks are described in Addendum A.
- COURSES** Pre-configured courses (Addendum B) will be signaled by a letter beneath the class number on the Signal Vessel. Classes without a course designation beneath their class number shall sail the course of the next faster rated class to have a course.
- The Race Committee may signal twice around by adding a “2” under the course letter. When twice around is indicated, mark T is not part of the course until the finish. For example, if Course A is B-X-(T or Finish), then Course A2 is B-X-B-X-(T or Finish).
- START/FINISH** The starting sequence will be in accordance with RRS 26. The start/finish line shall be between the course side of a staff flying a flag on the Signal Vessel and the course side of a nearby mark. The start/finish area will be located approximately 200 yards south of Red Rock buoy. When starting, the Signal Vessel is to be left to starboard and the starting mark to port. When finishing, the finish is in the direction from the last mark. The Race Committee may reposition the finish line to square the line to the course.

| | |
|--------------------------------|--|
| TIME LIMIT | 2100 for all divisions. Vessels that do not finish within the time limit shall be scored TLE. |
| PENALTIES WHILE RACING | Appendix V1, Penalty at the Time of the Incident applies whereby a vessel may take a One-Turn penalty when she may have broken a rule of Part 2 or rule 31 while racing, but when she may have broken a rule of Part 2 while in the zone around a mark other than a starting mark, her penalty shall be a Two-Turn penalty. |
| PROTESTS | Vessels shall announce their intention to protest or any penalty turns taken via VHF #65A as soon as possible after finishing and repeat such announcements until acknowledged by the Race Committee. Protests shall be in writing and delivered to any sponsoring club's Race Committee (or its designee), no later than 2 hours after the last vessel has finished (the "protest time limit"). |
| POST-RACE PENALTIES | Appendix V2, Penalty taken after a race applies whereby a vessel may make a post-race penalty of 30% per rule 44.3(c) but shall not be taken after a protest hearing involving the incident has begun |
| COMMUNICATIONS | The Race Committee will monitor and communicate on VHF channel 65A. The Race Committee may make courtesy announcements regarding the timing of the next start, the course, vessels OCS, etc. Failure to make or hear such broadcasts shall not be grounds for redress. This changes RRS 62.1. |
| SCORING | <ul style="list-style-type: none"> • Corrected times will be based on time-on-time allowances using the YRALIS PHRF non-spinnaker ratings. • The Time Correction Factor (TCF) is $650/(550+\text{Rating})$. • This is a four race series. RRS A4, Low Point Scoring System applies except that: <ul style="list-style-type: none"> -If four races are scored, a vessel must sail three to qualify for series prizes. A vessel that sails four races will have her worst score excluded. -If three races are scored, a vessel must sail two races to qualify for series prize. A vessel that sails three races will have her worst score excluded. -If two races are scored, a vessel must sail both races to qualify for series prizes. Both scores shall count without exclusion. • One race constitutes a series • Vessels that start and do not finish, shall be awarded points equal to the number of vessels in her class that finished plus one. |
| TEAM SCORING | <ul style="list-style-type: none"> • A team's score shall be the sum of each team member's score per instruction SCORING • The Team with the lowest combined score is the winning team. |
| PRIZES | Prizes for 1 st through 3 rd will be awarded in each class. |
| DISCLAIMER OF LIABILITY | Competitors participate in the series entirely at their own risk. See RRS 4, Decision to Race. The organizing authorities will not accept any liability for material damage or personal injury or death sustained in conjunction with or prior to, during or after the series. |
| FURTHER INFORMATION | For further information please contact your individual yacht club representative. |

Bernard Armstrong - RYC
Rick Sinclair – IHYC
James Weil – OGYC
Ned Nunes – BHC
YRA of LIS Technical Committee

ADDENDUM A



Exceptions on the racing chart, Addendum A is modified to say:

- (1) Marks D, K & L, may be passed on either hand when not used as turning marks.
- (2) Can C-3, west of Mark K and Nun 2, Flat Neck Point (Mark B) may be disregarded and left on either hand.
- (3) The channel between Cormorant Reef and Great Captain Island shall not be used.
- (4) Red Rock buoy & New Foundland Reef buoy shall be passed on the South Side.
- (5) Hen & Chicken Can C-1A shall be passed on the North Side.
- (6) The passage between Great Captain & Little Captain Islands shall not be used.

The description of Mark T is changed to read "Start/finish mark".

The description of Mark Y is changed to read "Inflatable dropped mark to windward of the start".

| | | | | | | | |
|---|--|---|---|---|---|---|--|
| A | Bell "G-1" flasher Little Captain Island E. Reef. | J | Special IHYC Mark off Calf Island. | P | Special RYC Mark North of Wee Captain Island. | V | Special RYC Mark West of Sugar Boat. |
| B | Red Nun "2", Flat Neck Point. | K | Red Nun "4", Greenwich Harbor. | Q | Special Mark approximately 1/4 mi. to leeward of start. | W | Special RYC Mark 1/4 mi. ENE of Red Rock. |
| C | Special Mark approx. 1 1/2 mi. to windward of Start. RC may Indicate magnetic bearing. | L | Red Nun "2". Greenwich Harbor. | R | Special BHC Mark off the Belle Haven Club | X | Special IHYC Mark SW of Tweed Island. |
| D | Red Gong "32-A" (flasher) LIS Mid-Channel Buoy. | M | Special reaching Mark, positioned on a line which is an extension of the starting line. | S | Special Mark approximately 3/4 mi. to windward of the start RC may indicate magnetic bearing. | Y | Special Mark approximately 1/2 mi. to windward of start RC may indicate magn. Bearing. |
| G | Red Bell "36" Bluefish Shoal. | N | Special Mark approximately 1/2 mi. to leeward of the start. | T | Start & Finish line Mark, adjacent to RC Signal boat, may also be used as Special Mark. | Z | Special Mark approximately 1 mi. to windward of start. RC may indicate magn, bearing. |
| H | Red Nun "2", Great Captain Island West Reef. | O | Special Mark approximately 100 ft. windward of the starting line. | U | Special IHYC Mark NNE of Great Captain Island Light. | | |

ADDENDUM B

| Course Name | Marks & Rounding Order | Round (leave) all Marks to | Wind is from the | Start area | | | |
|-------------|------------------------|----------------------------|------------------|------------|----------|--|--|
| | | | | east end | west end | | |
| A | B X | Port | Southeast | 2.5 | 2.5 | | |
| AT | B X T X | Port | | 3.5 | 3.5 | | |
| B | B V X | Port | | 2.7 | 2.7 | | |
| D | A V | Port | South | 1.5 | 1.5 | | |
| E | A V W | Port | 180 | 2.5 | 2.5 | | |
| F | A W | Port | | 2.0 | 2.0 | | |
| FT | A W T W | Port | | 2.8 | 2.8 | | |
| G | P L | Starboard | Southwest | 2.0 | 2.0 | | |
| GT | P L T P | Starboard | 225 | 4.0 | 4.0 | | |
| H | U L | Starboard | | 2.6 | 2.6 | | |
| HT | U L T U | Starboard | | 5.2 | 5.2 | | |
| J | L V | Port | West | 2.5 | 2.5 | | |
| K | L P | Port | | 2.0 | 2.0 | | |
| KT | L P T L | Port | | 3.5 | 3.5 | | |
| L | L U | Port | | 2.7 | 2.7 | | |
| LT | L U T L | Port | | 3.75 | 3.75 | | |
| M | J V | Port | | 4.0 | 4.0 | | |
| N | X B | Port | Northwest | 2.5 | 2.5 | | |
| NT | X B T B | Port | | 3.5 | 3.5 | | |
| OT | X L B T B | Port | | 4.6 | 4.6 | | |
| P | Y B | Port | | 1.5 | 1.5 | | |
| R | W A | Starboard | North | 2.0 | 2.0 | | |
| S | W V A | Starboard | | 2.3 | 2.3 | | |
| ST | W A T A | Port | | 3.4 | 3.4 | | |
| U | Y P | Port | Northeast | 1.5 | 1.5 | | |
| UT | Y P T P | Port | 45 | 3.0 | 3.0 | | |
| V | Y U | Port | | 2.5 | 2.5 | | |
| VT | Y U T U | Port | | 4.0 | 4.0 | | |
| W | Y L P | Port | | 2.25 | 2.25 | | |
| X | V L | Starboard | East | 2.5 | 2.5 | | |
| XT | V X L T L | Port | 90 | 4.0 | 4.0 | | |
| Z | V P L | Starboard | | 2.8 | 2.8 | | |
| ZJ | V J | Port | | 4.0 | 4.0 | | |

When used as a finish mark, finish between T and the adjacent race committee boat from the direction of the last mark.

Note: When the course has been shortened (the RC displays flag S with two sounds), the finish shall be at a rounding mark, between that mark and the adjacent race committee boat displaying flag S. Boats shall finish by crossing between the mark and flag from the course side (the direction of the last mark).

If the RC intends to shorten only specific classes, the class flags of those classes subject to the shortening shall be flown below flag S.