



2016 Sperry Charleston Race Week  
April 14-17, 2016

**SAILING INSTRUCTIONS**  
**Amendment # 2 – 04/14/16 at 1200**  
**Pursuit Race - Circles 6 ONLY**

SI 8.1 is changed to read:

8.1 The diagram in the SI Illustration D shows the intended courses 1, 2 and 3.

Courses 2 and 3:

Mark 1 for the (S1 and S2) classes is an orange tetrahedron.

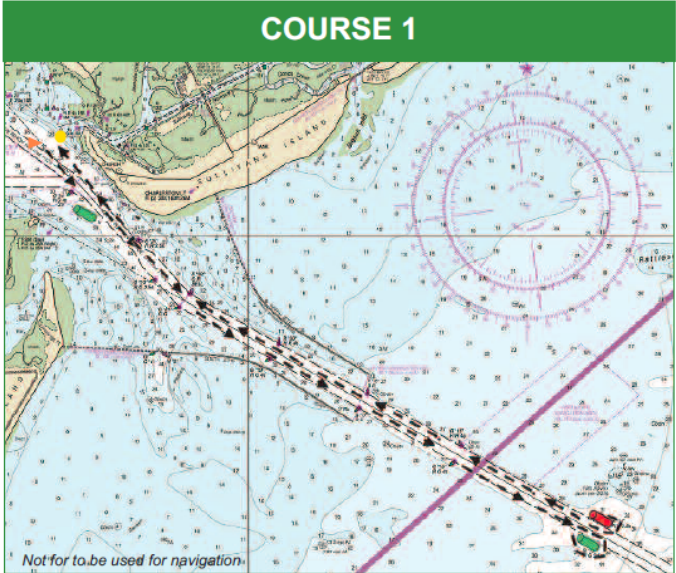
Mark 1 for the (NS) class is a yellow tetrahedron.

There will be three classes: Spinnaker Classes (S1) and (S2) and non-spinnaker Class (NS).

- *Course 1:* start, pass G25 to starboard, pass G19 to starboard, GATE (G13 to starboard OR R14 to port), return to the finish, pass G19 to port, pass G25 to port, finish. Approximate length of 14.0 nm. (S1/S2) and (NS) classes sail the same course.
- *Course 2:* start, pass G25 to starboard, pass G19 to starboard, pass through GATE (G13/R14), round Mark 1 to port, pass through GATE (G13/R14), pass G19 to port, pass G25 to port, finish.
  - (S1/S2) classes: Mark 1 at approximately 2 nm from GATE (G13/R14). Approx. length of 18.0 nm.
  - (NS) class: Mark 1 at approximately 1 nm from GATE (G13/R14). Approx. length of 16.0nm.
- *Course 3:* start, pass G25 to starboard, pass G19 to starboard, pass through GATE (G13/R14), round Mark 1 to port, pass through GATE (G13/R14), pass G19 to port, pass G25 to port, finish.
  - (S1/S2) classes: Mark 1 at approximately 4 nm from GATE (G13/R14). Approx. length of 22.0 nm.
  - (NS) class: Mark 1 at approximately 2 nm from GATE (G13/R14). Approximate length of 18.0 nm.

Replace Pursuit Race Courses with

**PURSUIT RACE COURSES - CIRCLE 6 - ILLUSTRATION D**



**COURSE 1**  
Same for S and NS Class - Approx. 14 NM

**START** RC Boat with orange staff on starboard end and a yellow tetrahedron on port

**G25 & G19** Starboard thru Jettys

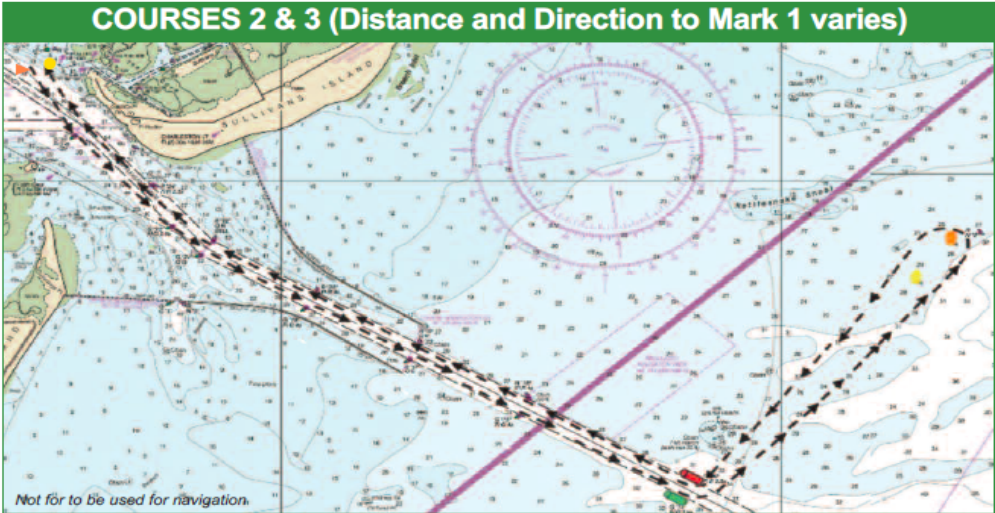
**Gate** Round G13 to Starboard  
or  
Round R14 to Port - back to finish

**G19, G25** Port

**FINISH** RC Boats with an orange staff at port and yellow tetrahedron to starboard

COURSE 2		COURSE 3	
S Class - Approx. 18 NM	NS Class - Approx. 16 NM	S Class - Approx. 22 NM	NS Class - Approx. 18 NM
<b>Start</b>		<b>Start</b>	
<b>Pass G25 to starboard</b>		<b>Pass G25 to starboard</b>	
<b>Pass G19 to starboard</b>		<b>Pass G19 to starboard</b>	
<b>Pass through GATE (G13/R14)</b>		<b>Pass through GATE (G13/R14)</b>	
<b>Round Mark 1 to port</b>		<b>Round Mark 1 to port</b>	
<b>Pass through GATE (G13/R14)</b>		<b>Pass through GATE (G13/R14)</b>	
<b>Pass G19 to port</b>		<b>Pass G19 to port</b>	
<b>Pass G 25 to Port</b>		<b>Pass G 25 to Port</b>	
<b>Finish</b>		<b>Finish</b>	

*Distance and direction to Mark 1 may vary based on wind direction and speed. The diagram below is for illustration purposes only.*



*Hank Stuart*