



Cape to Cape Challenge XIV

5th & 6th August 2022

Sailing Instructions



1. Rules

- 1.1 The Rules will be governed by the current US Sailing Racing Rules of Sailing (RRS), the prescriptions of the USSA, and these sailing instructions.
- 1.2 If there is a conflict between the NOR and these SI, the SI will prevail.

2. Eligibility

- 2.1 Open to all boats who have a valid ORR-EZ certificate and completed online registration at yachtscoring.com, signed a liability waiver, and paid the entry fee.
- 2.2 All boats must meet all applicable national, state, and local requirements for safety equipment.

3. Notices to Competitors

- 3.1 Notices to Competitors will be posted on the official regatta notice board on Yachtscoring. It is the responsibility of the competitors to check for updates.

<https://yachtscoring.com/emenu.cfm?eID=15307>

4. Changes to Sailing Instructions

- 4.1 Changes to these sailing instructions shall be posted not later than 0830 the day they take effect, except for changes to the start time which shall be posted no later than 2100 the evening before.

5. Signals made ashore

- 5.1 No official signals will be made ashore. Notifications to competitors will be posted on the official notice board on <https://yachtscoring.com/emenu.cfm?eID=15307>.

6. Schedule

Friday August 5th


- o 1000 Competitors meeting @ Lewes City Dock/ by the Canons
- o 1155 Warning/First Signal. 2 buoy races scheduled
- o No races start after 1600
- o 1700 Competitors meeting for distance race LYC Regatta Room/ C2C Reception

Saturday August 6th

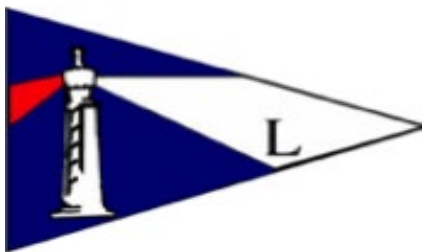
- o 955 Warning/First signal
- o No start will occur after 1230.

7. Class Flags

- 7.1 Signal flag "1" will be used for Racer Cruiser Class. Red dot on white 

- 7.2 Signal Flag "2" will be used for Performance Cruiser Class. White dot on blue. 

- 7.3 Classes may start together with both Class flags displayed on the signal boat



Cape to Cape Challenge XIV

5th & 6th August 2022

Sailing Instructions



8. Sailing Area

- 8.1 August 5th Buoy Races will be in the vicinity of Roosevelt Inlet off Lewes Beach & Cape Henlopen
- 8.2 August 6th Cape to Cape race will be in the Atlantic Ocean and Delaware Bay between Lewes, DE and Cape May, NJ.

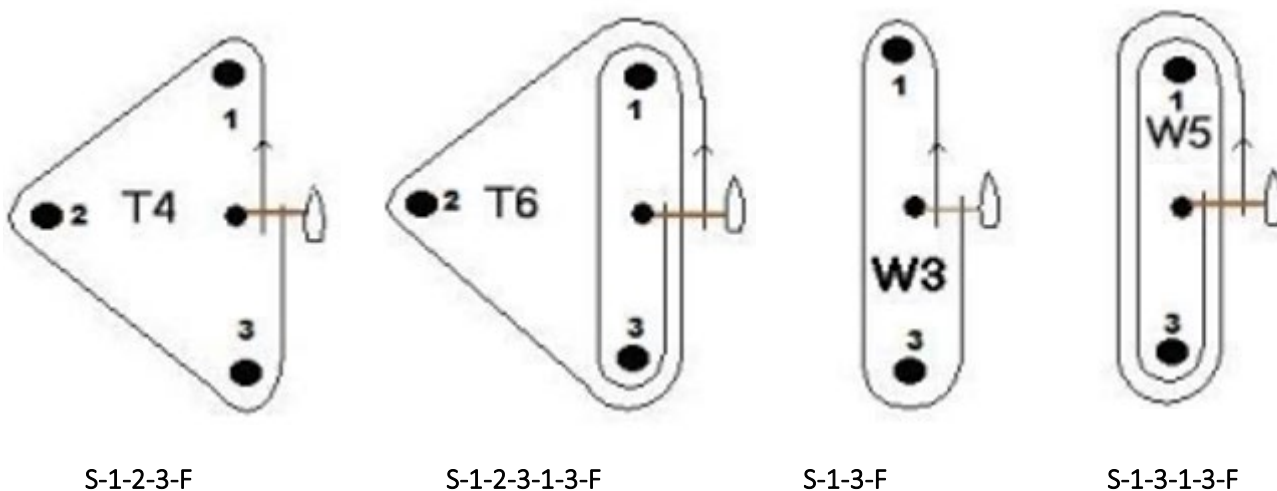
9. Courses

9.1 Friday August 5

Courses will be displayed on a course board from the starting line by the RC signal boat and announced on Channel 78.

9.2 Courses will be designated as T (Triangle), or W (Windward Leeward) followed by the number of legs.

9.3 Course Diagrams for Friday races are as follows:



S=Start F=Finish. Be sure that you sail the correct number of legs. Finish line is closed unless the boat is finishing. See item 14 "Finish".

9.4 Saturday August 6th

There are two possible courses – Course A and Course B. The start for both courses will be 0.5nm downwind from the weather mark located approximately at 38°48.1'N 75°09.7'W. If the weather mark begins, ends, or bounds a leg of the course then how to round that mark (port or starboard) will be announced on VHF 78 before the first signal.



Cape to Cape Challenge XIV

5th & 6th August 2022

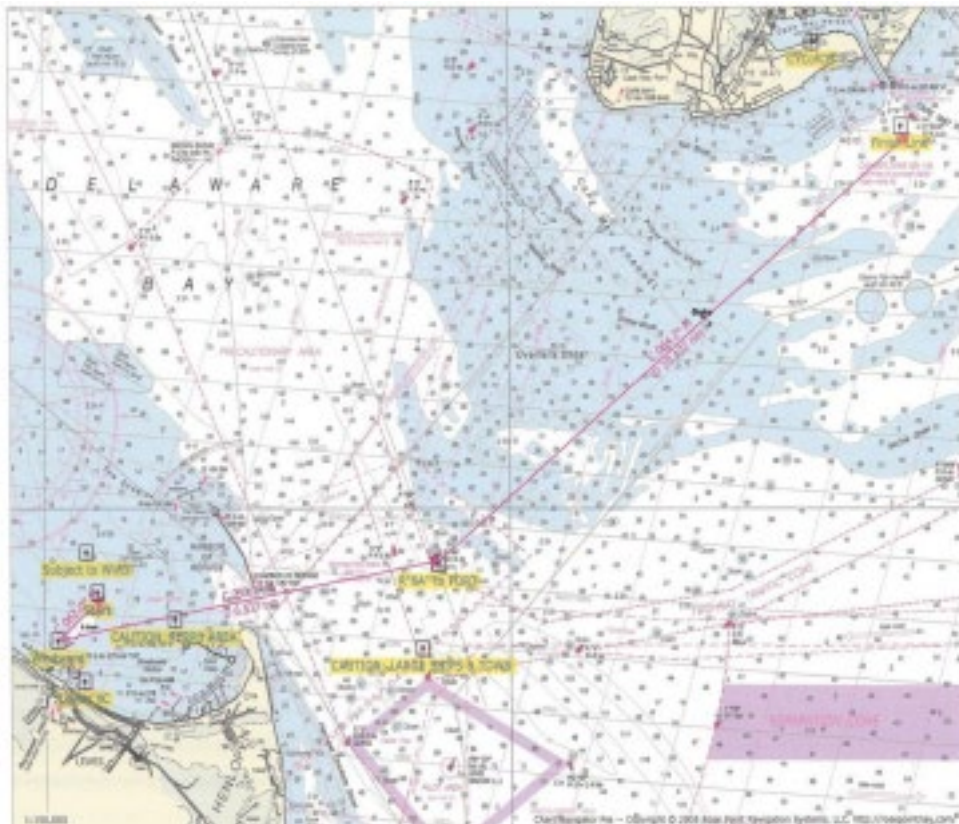
Sailing Instructions

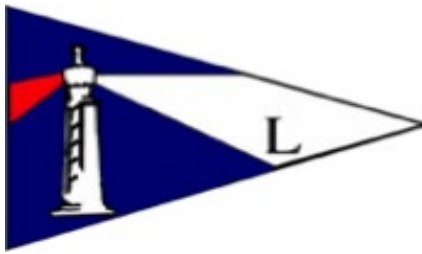


9.5 Course Diagrams for Saturday August 6th are as follows:

9.6 Course A Ocean Course

- From Start line in vicinity of Roosevelt Inlet, to **windward mark**. RC will announce rounding direction on Ch 78.
- Leave **Red "8A"** to port (Approx 38.49.314N, 75.1.576 W).
- Leave **Prissywick Shoal** to port: There will be a gate (Orange tetrahedron to port and yellow tomato shaped mark to starboard (seaward)) near Prissywick Shoal located at approximately N38.52.000, W74.55.000. The gate is located to seaward of the Prissywick shallow spot.
- The finishing line will be located off Cape May Beaches at approximately N38.55.599, W74.52.952 which is located off the CM beach West of 2 CM . The Finish line is to be crossed in the direction from the Prissywick gate.





Cape to Cape Challenge XIV

5th & 6th August 2022

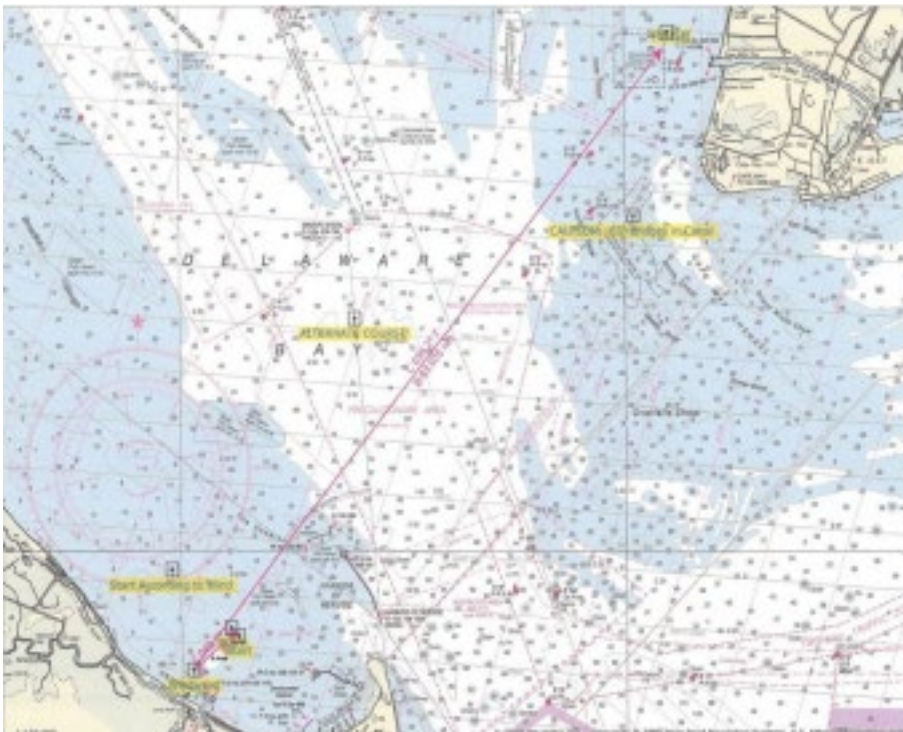
Sailing Instructions



9.5 Course "B" Alternate Course .

From Start line in vicinity of Roosevelt Inlet, to a windward mark. RC will announce rounding direction on Ch 78.

There will be a **Finish Gate** (Orange tetrahedron to port and yellow tomato shaped mark to starboard (seaward)) near the western entrance to the Cape May Canal.



10. Marks

10.1 Marks 1, 2, 3 will be yellow cylinders. There may be an offset mark of a small red ball at the windward mark. A T course will have no offset

10.2 Change marks will be large red tomatoes.

11. Checking in

11.1 Before the first warning signal of the day, each yacht shall sail past the stern of the race committee signal boat and hail her sail number or check in via radio hail on Channel 78 until acknowledged by the RC

12. Start



Cape to Cape Challenge XIV

5th & 6th August 2022

Sailing Instructions



- 12.1 The starting sequence shall be in accordance with RRS Rule 26.
- 12.2 The starting line will be between a staff displaying an orange flag on the Race Committee boat and a pin end starting mark, red ball, or an orange flag on a pin end boat.
- 12.3 A boat that does not start within 5 minutes after her starting signal shall be scored DNS/DNC without a hearing. This changes A5.
- 12.4 A series of short sound signals may precede the warning signal of the race. These are not timed signals.
- 12.5 RC starting line boats may use a stand-off buoy.
- 12.6 Recalls: The race committee will hail on VHF channel 78 boats identified as OCS, UFD, or BFD. A boat may not base a request for redress on the failure to hear or receive the announcements, the timeliness of announcement, or the order in which boats are announced. There will not be a display board at the weather mark with sail numbers for UFD and BFD. This changes RRS 62.1(a).

13. Course Changes

13.1 Changing the Next Leg of the Course

- 13.2 Rule 33 will communicate changes in course
- 13.3 To change the next leg of the course the RC will lay a new mark (or move the finishing line) and remove the original mark as soon as practicable. When in a subsequent change a new mark is replaced, it will be replaced by the original mark.
- 13.4 Shortening the Course.

The S flag may be displayed with a class flag. This indicates a Shortened course for the displayed class only and other classes should proceed. If no class flag is displayed with the S Flag, then ALL boats will finish in accordance with 32.2. In addition to flags

14. Finish

- 14.1 Friday races: The finishing line will be between a staff displaying an orange flag on a Race Committee boat and a red mark at the opposite end of the line. After the second start, the pin will move to shorten the line (about 1/2 of the distance of the start length) and set for the finish. The finish line can only be crossed when you are finishing to keep the area clear for finish calls. **On Friday the finishing line is closed with no signal unless a boat is finishing.** A boat that breaks this rule will be scored DNF without a hearing.
- 14.2 Saturday race: The finishing line will be between a staff displaying a blue flag on a Race Committee boat and an Orange tetrahedron at the finishing line location provided in item 9 "The Course". In addition, the Race Committee Finish Boat may fly an orange flag to improve distant visibility.



Cape to Cape Challenge XIV

5th & 6th August 2022

Sailing Instructions



15. Time Limits

15.1 Buoy Races (5th August)

15.2 Mark 1 time limit if no boat reaches the 1st mark of the course in 45 minutes that race shall be abandoned

15.3 Race time limit: If no boat finishes within a race time limit of 2 hours, the race is abandoned

15.4 Finishing window: If the first boat finishes within the race time limit, all other boats not finishing within 30 minutes **of the second boat to finish** will be scored time limit expired (TLE) without a hearing. This changes RRS 35, A5.1, A5.2. The time of the second boat to cross the line shall be announced by the RC. Failure to hear this announcement is not grounds for redress.

15.5 Bay Crossing Race (6th August) Race Time Limit

Boats not finishing within 6 hours of starting will be scored time limit expired (TLE) without a hearing. This changes RRS 35, A5.1, A5.2.

16. Scoring

16.1 Low Point Scoring system RRS Appendix A shall be used except: Rule A2 is changed as follows: "No score will be excluded".

16.2 The Scores for the two buoy races shall count as 25% each towards the Regatta overall standings. The Cape to Cape Distance race shall count as 50% of the total.

16.3 In the event that one of the buoy races is canceled or abandoned, the Cape to Cape race shall be scored 66%, and the one buoy race sailed shall be scored 34% towards the regatta final standings.

16.4 One race shall constitute a regatta.

17. Alternative Penalties

Appendix V is in effect, Sections V1 and V2.

18. Protests

18.1 A protesting yacht shall display a red flag flown conspicuously from the backstay as soon as possible after the incident.

18.2 The protested yacht can acknowledge her infringement by using alternative penalties

18.3 A protesting yacht must notify the protested yacht as soon as possible after the incident of her intention to protest.



Cape to Cape Challenge XIV

5th & 6th August 2022

Sailing Instructions



18.4 Friday August 5th A protest form must be filled out and given to the RC within 45 minutes after the posted docking time for the RC signal boat at LYC. Forms can be found on the notice board and emailed to regatta@lewesyc.com or turned at Regatta room at LYC.

18.5 Protest notices will be posted in the regatta room within 15 minutes of the protest time limit. This will inform competitors where and when there is a hearing. This may be a virtual hearing.

18.6 Saturday August 6th. A protest form must be filled out and give to the RC within 45 minutes of the Signal Boat Dock time at CYCCM

19. Safety

19.1 All boats must have an operating VHF radio capable of receiving and transmitting.

19.2 A yacht that retires from the race course shall notify the RC before leaving the course area. Notification can be by VHF Ch 78 making sure the RC acknowledges the message. A yacht that is unable to notify the RC prior to leaving the course area shall notify the RC by cellphone (provided at Skippers Meeting & on Yachtscoring on 8/5) as soon as possible. Retiring boats, if possible, should also notify other nearby boats she is retiring.

19.3 This race is being conducted in a major commercial traffic area and across shipping lanes. Give way to ships and ferries that are sailing in channels and may have restricted maneuverability. Monitor ship to ship VHF channel 13.

19.4 Roosevelt inlet has a shoal building from the north beach that is marked. **Use caution when traversing Roosevelt inlet.**

20. Radio Use

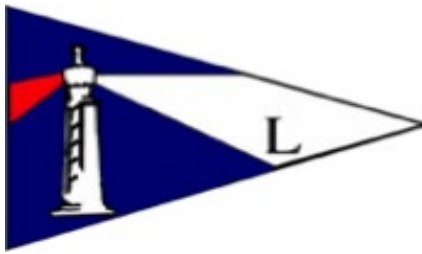
20.1 The Race Committee will use VHF channel 78 for communications to the competitors. RC broadcasts of its intentions are as a courtesy only and in no way relieve competitors of their responsibility to monitor and respond to RC flags and signals.

21. Disclaimer of Liability

21.1 Competitors participate in the regatta entirely at their own risk. See RRS 4, Decision to Race. The organizing authority or any other party involved in the organization of the regatta will not accept any responsibility or liability for material damage or personal injury or death sustained in conjunction with or prior to, during, or after the regatta.

22. Rights to use Name and Likeness

By participating, competitors automatically grant to the organizing authority the right, in perpetuity, to make, use, and show, at their discretion, any photography, audio, and



Cape to Cape Challenge XIV

5th & 6th August 2022

Sailing Instructions



video recordings, and other reproductions of them made at the venue without compensation.

23. Awards

22.1 Class Awards based on combined regatta scores will be awarded as follows:

1. Racer Cruiser (Spin & Non-Spin combined) - 1st, 2nd, 3rd
2. Performance Cruiser (Spinnaker) - 1st, 2nd, 3rd
3. Performance Cruiser (Non-Spinnaker) - 1st, 2nd, 3rd
4. Bay Race Only Fleet (Spin & Non-Spin combined) – 1st

22.2 Cape to Cape Cups will be awarded to the winner of each of these two categories based on combined scores of both the buoy and distance race:

1. Racer Cruiser
2. Performance Cruiser

22.3 Prizes will be presented at the awards Reception held at CYCCM Saturday evening.