



# 1<sup>st</sup> Annual Seafarers Regatta



Saturday, 24 September 2022

ORGANIZING AUTHORITY  
Eastport Yacht Club

## SAILING INSTRUCTIONS

The notation “[NP]” in a rule means that a boat may not protest another boat for breaking that rule. This changes RRS 60.1(a).

### 1 RULES

The event shall be governed by the *rules* as defined in the *Racing Rules of Sailing* (RRS).

### 2 CHANGES TO SAILING INSTRUCTIONS

Any change to the Sailing Instructions (SIs) will be posted before 0800 on the day it will take effect, except that any change to the schedule of races will be posted by 2000 on the day before it will take effect.

### 3 COMMUNICATIONS

Race Committee (RC) intends to monitor and communicate with competitors on VHF radio channel 71 while on the water.

### 4 SCHEDULE OF RACES

The schedule of events is:

Sat, 24 September	1100	RC Signal Vessel on-station
	1200	Intended Warning Signal for the race
	After racing	Post-race social and awards presentation at SYC

### 5 CLASS FLAG(S), WARNING FLAG(S), AND START ORDER

5.1 Boats will not be required to display a class flag while racing.

5.2 The start order and Warning flag for each class will be posted to the Official Notice Board before 2000 on Friday, 23 September 2022.

### 6 CHECK IN

[DP] [NP] Prior to starting, all boats shall check in by sailing past the stern of the RC Signal Vessel on starboard tack, hail their sail number, until acknowledged by the RC.

### 7 THE COURSE

7.1 Figure 1 shows course “A,” in which the start will head toward the southeast (down the river). RC will also display a number to indicate the number of laps the class shall sail. “A1” indicates one (1) lap; “A2” indicates two (2) laps; and, “A3” indicates three (3) laps.

7.2 Figure 2 shows course “B,” in which the start will head toward the northwest (up the river). RC will also display a number to indicate the number of laps the class shall sail. “B1” indicates one (1) lap; “B2” indicates two (2) laps; and, “B3” indicates three (3) laps.





# 1<sup>ST</sup> Annual Seafarers Regatta Sailing Instructions



- 7.3 The course letter and number will be prominently displayed on the RC Signal Vessel on the side opposite the starting line.
- 7.4 [DP] Once properly started, boats shall not sail through the starting line, in either direction, when the RC is displaying an orange flag. For boats that have already started, the starting line shall be considered an obstruction when the orange flag is displayed. This changes RRS 28.1.
- 7.5 DP] Except on the leg to the finish, boats shall not sail through the finish line, in either direction, when the RC is displaying a blue flag. This changes RRS 28.1.

## 8 MARKS

The marks of the course are identified immediately below.

<b>MARK</b>	<b>APPROXIMATE LOCATION</b>
START: G "9" Q G	N 38° 58.70' / W 076° 28.00'
G C "13"	N 38° 58.92' / W 076° 28.41'
BC: Blue Inflatable Cylinder	N 38° 57.67' / W 076° 26.84'
FINISH: Blue Inflatable Cylinder	N 38° 58.63' / W 076° 28.17'

## 9 THE START

- 9.1 The starting line will be between a staff displaying an orange flag on the RC Signal Vessel and Severn River buoy "G "9" Q G."
- 9.2 Boats whose warning signal has not been made shall avoid the starting area during the starting sequence for other races.
- 9.3 A boat that does not start within ten (10) minutes after the start signal of the last class shall not race and will be scored Did Not Start without a hearing. This changes RRS A5.1 and RRS A5.2.

## 10 RECALLS

RC intends to hail the sail numbers of OCS boats after the starting signal on VHF channel 71. Failure to hail her number, failure of her to hear such a hail, the timeliness of the announcement, or the order in which boats are announced will not be grounds for a request for redress. This changes RRS 62.1(a).

## 11 THE FINISH

[DP] The finish line shall be between a staff displaying a blue flag on the RC Signal Vessel and the course side of a blue cylinder with gold "SYC" lettering.

## 12 RACE TIME LIMIT

- 12.1 The race time limit for the first boat in each class to finish is one hundred-twenty (120) minutes.
- 12.2 Boats failing to finish within sixty (60) minutes of the first boat in her class sails the course and finishes, and not subsequently retiring, being penalized, or given redress, will be scored Time Limit Expired (TLE) without a hearing. This changes RRS 35, A4, A5, and A10.

## 13 HEARING REQUESTS

- 13.1 Scoring Inquiries shall be submitted within the Protest Time Limit.
  - a. Scoring inquiries shall be submitted via the "Online Scoring Inquiry Filing" link found on the Yacht Scoring event main page.
  - b. Scoring inquiries may be resolved via teleconference or video conference.
- 13.2 Protests and Requests for Redress shall be submitted within the Protest Time Limit. Electronic submittal shall be used and is available via the "Owner's Corner" link found on the Yacht Scoring event main page or via email to [sycregatta1959@gmail.com](mailto:sycregatta1959@gmail.com). A diagram of the incident, if applicable, cannot be submitted via Yacht Scoring, and should be scanned and emailed to the RC at [sycregatta1959@gmail.com](mailto:sycregatta1959@gmail.com) prior to the hearing.
- 13.3 The alternative penalty acceptance form (RRS Appendix V2) will be available via the "Documents & Forms" link found on the Yacht Scoring event main page. The form may also be emailed to the RC at [sycregatta1959@gmail.com](mailto:sycregatta1959@gmail.com).



# 1<sup>ST</sup> Annual Seafarers Regatta Sailing Instructions



- 13.4 The protest time limit is sixty (60), minutes after the RC Signal Vessel dock time, which will be posted to the Official Notice Board. This posting constitutes the notification required in RRS 61.3. The time limit for a Request for Redress based on an incident in the racing area shall be the Protest Time Limit. This changes RRS 62.2.
- 13.5 The Protest Committee may schedule a hearing prior to the Protest Time Limit if the parties and witnesses are available and have had time to prepare for the hearing. Protest and/or request for redress hearings will be held at Eastport Yacht Club (317 First Street, Annapolis, MD). The parties are responsible for having their witnesses, if any, present at the beginning of the hearing. The time and location of each protest hearing will be posted on the Official Notice Board.

## 14 SCORING

Boats to be scored TLE and not thereafter retiring, being penalized, or given redress will be scored points equal to the number of boats finishing within the race time limit plus two (2) points by the RC without a hearing. This changes RRS A5.2.

## 15 SAFETY REGULATIONS

- 15.1 [DP] [NP] A boat that retires from a race shall notify the RC as soon as possible either by hail or on VHF channel 71 or by phone on the, or via the SYC cell phone, (667) 225-4164, or via email at [sycregatta1959@gmail.com](mailto:sycregatta1959@gmail.com). A voicemail message shall include the approximate time of the message, the skipper's name, boat name, and sail number.
- 15.2 [DP] [NP] A boat shall not exercise right of way, cross in proximity to, or interfere with reasonable transit of the race area by commercial traffic of any kind. Boats must take evasive action well in advance of a potentially dangerous situation. The US Coast Guard, ship captains, and bay pilots have been encouraged to report any incident they observe.
- 15.3 [NP] A boat without way may use any means of propulsion to avoid underway commercial traffic, provided:
  - (a) the boat does not gain an advantage;
  - (b) using propulsion is the only means of avoiding the commercial traffic; and,
  - (c) the boat submits a report (in writing or by email) to the RC by the protest time limit that describes the incident and the boat's actions.
- 15.4 [NP] The RC or Protest Committee may protest a boat for SI 15.2 and/or 15.3 based on information received from any source. The protest time limit does not apply. This changes RRS 60.2, 60.3, and 61.3.

## 16 TRASH DISPOSAL

[DP] This is a Clean Regatta. All competitors are encouraged to use multi-use water bottles instead of disposable water bottles, and to recycle whenever possible. A competitor shall not intentionally put trash in the water.





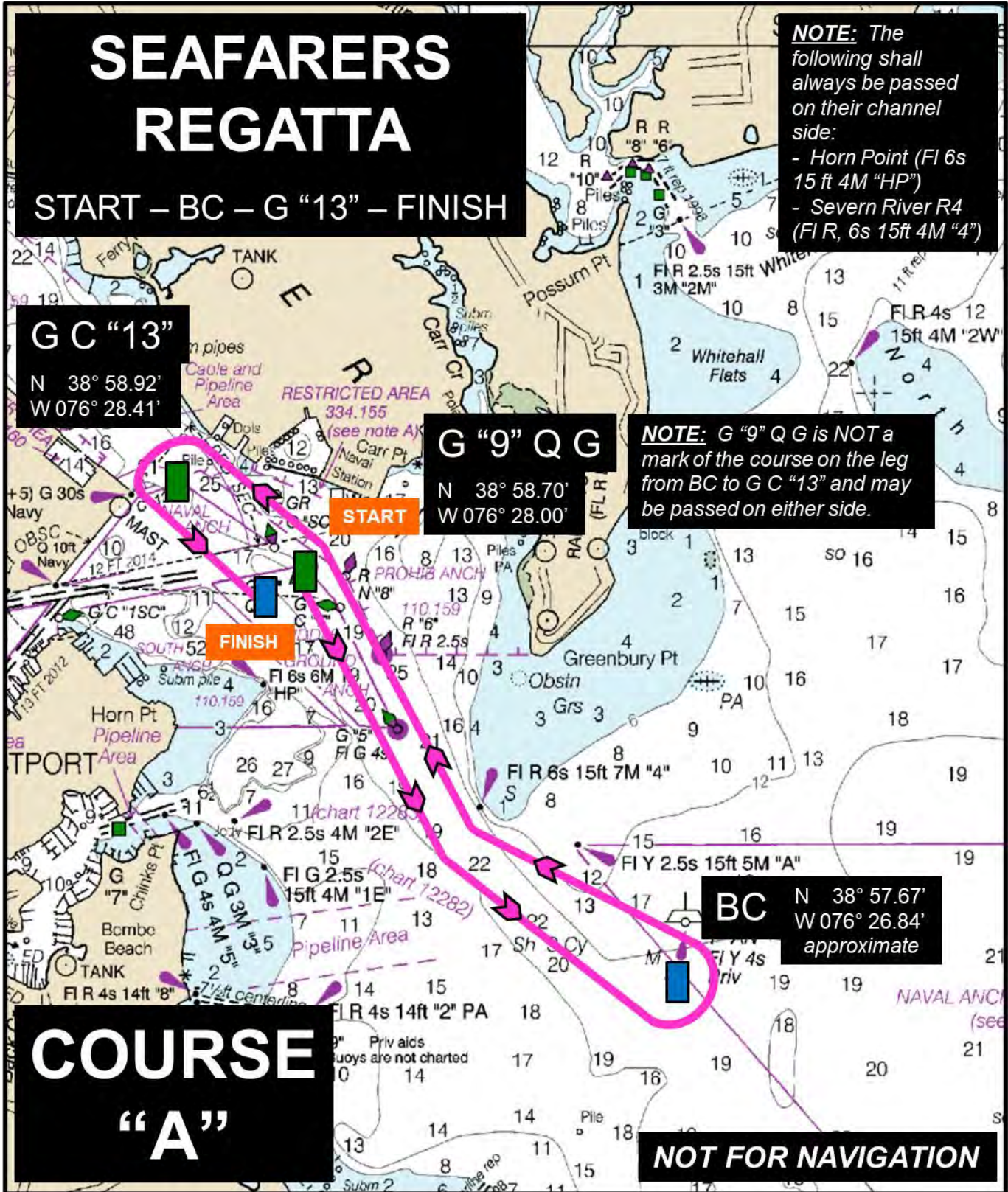


Figure 1. Seafarers Regatta Course “A”



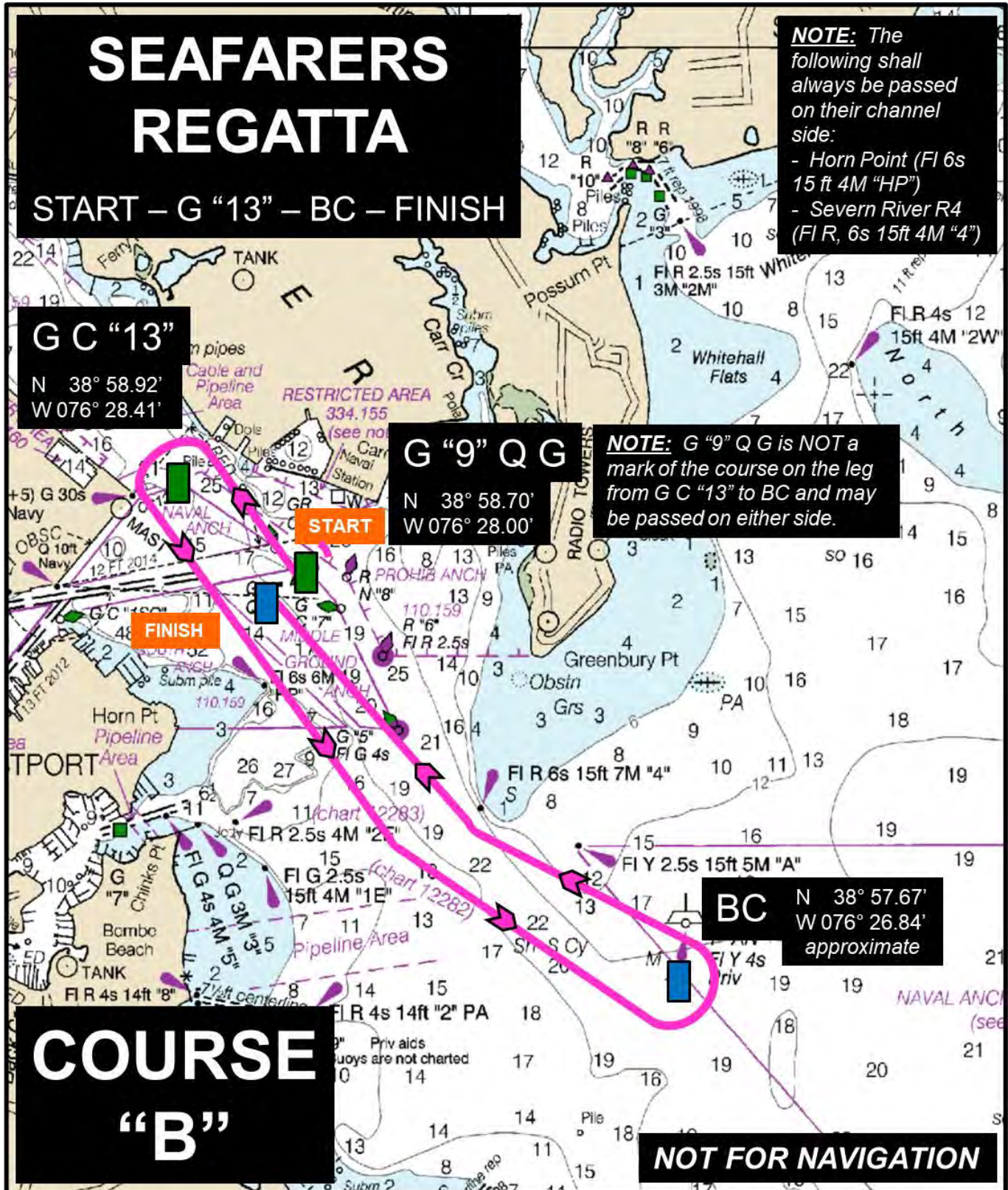


Figure 2. Seafarers Regatta Course "B"