

**2022 Papa's Pilar Rumgatta
Tampa Sailing Squadron
October 22nd, 2022**

Sailing Instructions

1 RULES

- 1.1** Races will be governed by the rules as defined in the current Racing Rules of Sailing (RRS).
1.2 If there is a conflict between the Sailing Instructions and any other document governing the event, the Sailing Instructions take precedence. This changes RRS 63.7.

2 NOTICES TO COMPETITORS

- 2.1** Notices to competitors will be posted on the Official Regatta Notice Board located in the Kiosk adjacent to the flag pole.
2.2 The Race Committee will use VHF channel 68 to communicate with competitors.

3 CHANGES TO SAILING INSTRUCTIONS

- 3.1** Change to the Sailing Instructions will be:
(A) Posted on shore, at the Official Regatta Notice Board before 2000 on October 21st, or
(B) Communicated on the water, by display of the Lima Flag (come within hale).

4 SIGNALS MADE ASHORE

- 4.1** Signals made on shore will be displayed from the flagpole at TSS.
4.2 When flag AP is displayed ashore, '1 minute' is replaced by 'not less than 1 hour' in race signal AP. This changes RRS Signal AP.

5. SCHEDULE OF RACES

- 5.1** Competitors meeting is Friday, October 21st, 2022 at 2000, in the TSS clubhouse.
5.2 Race date is Saturday, October 22nd, 2022.
5.3 One race will be sailed in each of the 5 classes.
5.4 5 minute start sequences are scheduled below by time, class, and numeral pennant.
(A) 1100 flag start, Spinnaker, **Pennant 1.**
(B) 1105 flag start, Non-Spinnaker, **Pennant 2.**
(C) 1110 flag start, Racer-Cruiser, **Pennant 3.**
(D) 1130 pursuit start begins for Cruisers & Mother Load, **Pennant 4 flown over Pennant 5.**



6 Racing Area

6.1 Racing area will be on Hillsborough Bay, with the Starting area approximately 2 nm WNW of Apollo Beach, and detailed areas shown on Course attachments.

7 THE COURSES

7.1 The courses are shown in the Course Attachments.

7.2 No later than the warning signal, the Race Committee will display the Course to be sailed from the RC vessel.

8 MARKS

8.1 The Marks are described in the Course attachments.

9 THE START

9.1 The Start will be the orange flag on the RC vessel and the course side of an orange inflatable mark.

9.2 The starting line will be located 0.25 nm directly downwind from TSS mark "X" (somewhere on the dashed circle around mark "X" as shown in the course diagrams).

9.3 Boats not yet in their starting sequence shall avoid boats which are.

9.4 Boats which do not start within 15 minutes of their scheduled start time will be scored DNS without a hearing. This changes RRS A4 and A5.

9.5 All boats shall check in with the RC Signals vessel no later than ten minutes before their start time, hailing their sail number, name, and class. This must be done by voice, while on starboard tack, passing close to the stern of the RC vessel. VHF radio may NOT be used to check in. [DP]

9.6 When an individual recall is signaled, in addition to displaying the X flag, (X-ray, individual recall), and the sounding of one horn, the race committee will attempt to hail boats that are OCS.

10 THE FINISH

10.1 The Finish will be between the orange flag on the RC vessel and TSS mark "X".

11 THE PENALTY SYSTEM

11.1 In all classes the Scoring Penalty of RRS 44.3 will replace all Turns Penalties. To accept a Scoring Penalty, a boat must promptly display a yellow flag, and call the race committee's attention to it upon finishing.

12 TIME LIMITS

12.1 Boats failing to finish within 60 minutes after the first boat in their Class sails the course and finishes will be scored DNF (Did Not Finish) without a hearing. This changes RRS 35, A4, and A5.

13 PROTESTS AND REQUESTS FOR REDRESS

13.1 Boats intending to protest shall do so in accordance with rule 61 and shall inform the race committee finish boat immediately after finishing by sailing to the opposite side of the committee boat from the finish line, b themselves by sail number and the sail number of the boat they are protesting. The protesting boat will continue to display a protest flag and not leave the finish area until acknowledged by the race committee. This changes RRS 61.1.

13.2 Protest forms are available at TSS.

13.3 Protests and requests for redress shall be hand-delivered no later than 60 minutes after the RC Signal Boat docks, to either Principal Race Officer Bob Sardo (813-431-8268) or Organizing Authority Wesley Shaw (813-439-7600).

13.4 Notice will be posted no later than 60 minutes after the protest, informing competitors of the location and time of any hearings.

14 SCORING

14.1 PHRF time-on-distance will be used to calculate individual starting times on the pursuit start and handicaps on the flag start.

14.2 Unless the course is shortened, each boat's score will be the order she finishes on the pursuit start and the corrected score for the flag start.

14.3 If the course(s) are shortened, corrected finish times and order will be calculated using the shorter course length.

15 SAFETY REGULATIONS

15.1 Any boat that challenges a vessel confined to the Tampa Bay shipping channels in such a way as to cause them to file a report, or who violates a moving or static safety or security zone resulting in the filing of a report, will be disqualified. This changes RRS 63

15.2 A competitor who intentionally puts trash in the water may be protested by other boats or the race committee.

16 RADIO COMMUNICATIONS

16.1 The race committee will monitor VHF channel 68.

16.2 A boat leaving the racing area before finishing shall notify the Race Committee signal vessel over VHF, hailing her name, sail number, and division or class, and receive acknowledgment from the race committee. [DP]

16.3 Except in an emergency, a boat shall neither make radio transmissions while racing nor receive radio communications not available to all boats. This restriction also applies to mobile telephones. [DP]

17 PRIZES

Prizes will be presented Saturday evening at 1900. Final results will be posted after any protest hearings. The final results may affect the awarded prizes.

18 DISCLAIMER OF LIABILITY

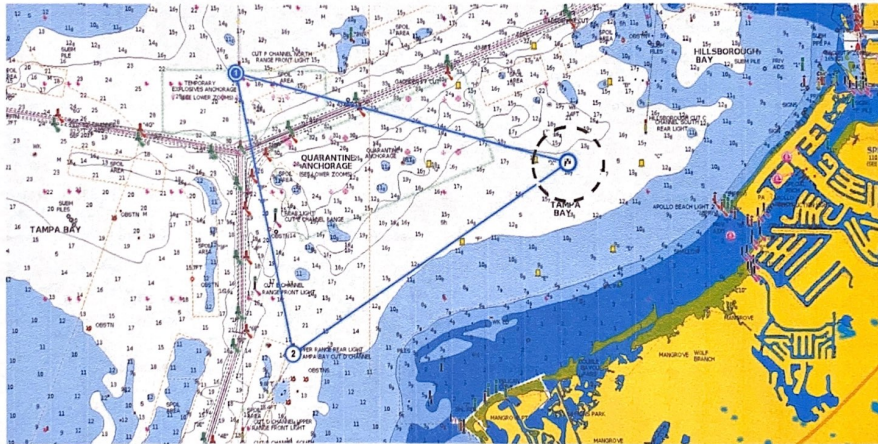
Competitors participate in the regatta entirely at their own risk. See RRS 4, Decision to Race. The Organizing Authority will not accept any liability for material damage, personal injury, or death sustained in conjunction with, or prior to, during, or after the regatta.

End of Sailing Instructions, Courses listed below for reference only.



[Start] RC boat and Starting Pin located on dashed circle 0.25 nm downwind of Checkered Flag. **Total Course: 4.45 nm.**
 [Checkered Flag] TSS "x" Mark [27.782223 -82.470332], (27° 46' 56", -82° 28' 13"). First Mark after Start.
 Due windward of Starting Line. Leg: 0.25 nm.
 [1] Range Tower - Cut "C", southbound, rear tower [27.866606, -82.450836], (27° 47' 12", -82° 28' 13"). Leave to Port. Leg: 1.1 nm.
 [2] Clinometer - Gadsden Pt #6, red, 8 sec [27.795524, -82.485984], (27° 47' 44", -82° 29' 10"). Leave to Port. Leg: 1.9 nm.
 [Checkered Flag] TSS "x" Mark [27.782223, -82.470332], (27° 46' 56", -82° 28' 13"). Finish line. Leg: 1.2 nm.

Course A

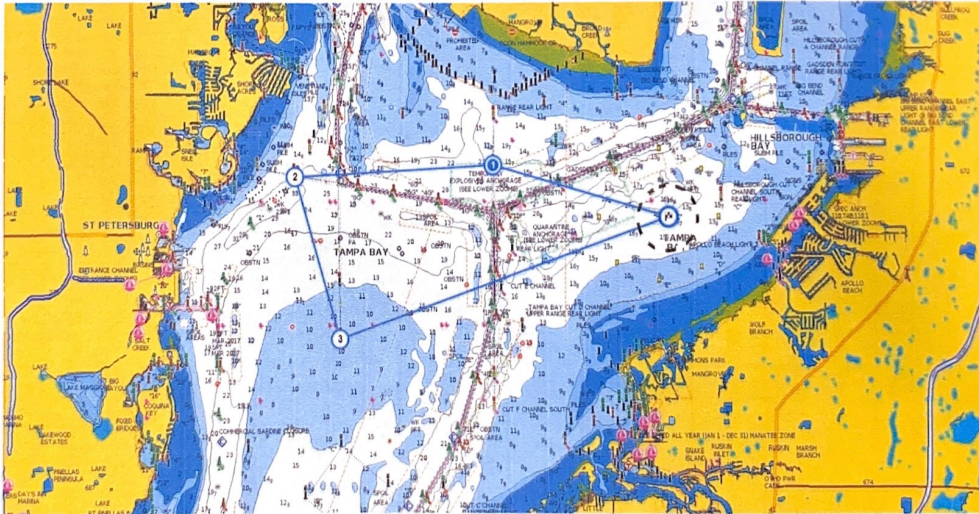


[Start] RC boat and Starting Pin located on dashed circle 0.25 nm downwind of Checkered Flag. Total Course: 8.65 nm.
 [Checkered Flag] TSS "c" Mark (27.782223, -82.470332). First Mark after Start. Due windward of Starting Line.

- [1] Range Tower - Cut "F", northbound, front tower (27.795491, -82.523182). Leave to Port.
- [2] Range Tower - Cut "D", northbound, rear tower (27.753358, -82.513617). Leave to Port.
- [Checkered Flag] TSS "c" Mark (27.782223, -82.470332). Finish line.

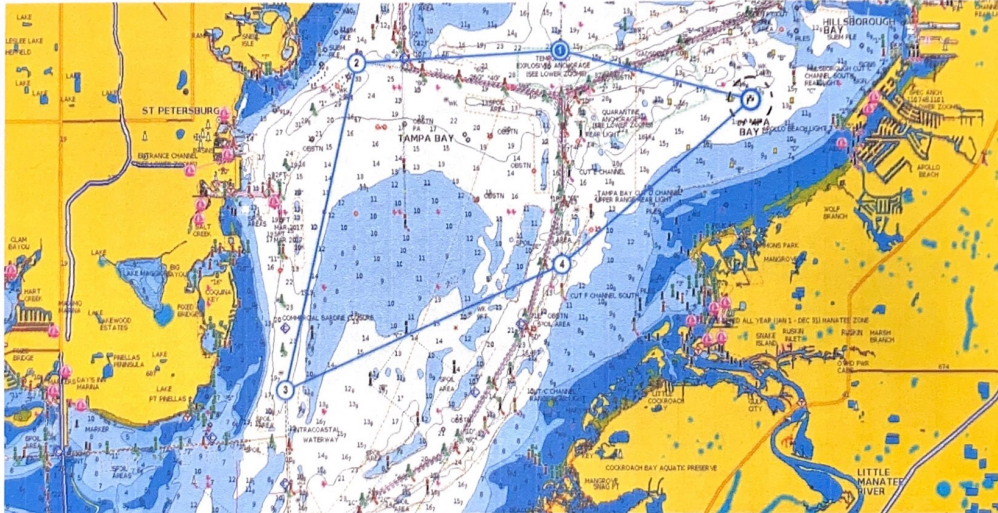
- Leg: 0.25 nm.
- Leg: 2.9 nm.
- Leg: 2.6 nm.
- Leg: 2.9 nm.

Course B



[Start] RC boat and Starting Pin located on dashed circle 0.25 nm downwind of Checkered Flag. **Total Course: 14.95 nm.**
 [Checkered Flag] TSS "x" Mark [27.782223, -82.470332], (27° 46' 56", -82° 28' 13"). First Mark after Start.
 Due windward of Starting Line.
 [1] Range Tower - Cut "F", NB, front tower [27.795491, -82.523162], (27° 47' 44", -82° 31' 23"). Leave to Port. Leg: 0.25 nm.
 [2] Range Tower - Cut "G", WB, front tower [27.793006, -82.587142], (27° 47' 35", -82° 35' 14"). Leave to Port. Leg: 2.9 nm.
 [3] Range Tower - Cut "J", SB, rear tower [27.750832, -82.572132], (27° 45' 03", -82° 34' 20"). Leave to Port. Leg: 3.4 nm.
 [Checkered Flag] TSS "x" Mark [27.782223, -82.470332], (27° 46' 56", -82° 28' 13"). Finish Line. Leg: 2.7 nm.
 Leg: 5.7 nm.

Course C



[Start] RC boat and Starting Pin located on dashed circle 0.25 nm downwind of Checkered Flag. **Total Course: 20.75 nm.**
 [Checkered Flag] TSS "x" Mark [27.782223, -82.470333], (27° 46' 56", -82° 28' 13"). First Mark after Start.
 Due windward of Starting Line.

[1] Range Tower - Cut "F", NB, front tower [27.795491, -82.523182], (27° 47' 44", -82° 31' 23"). Leave to Port.	Leg: 0.25 nm.
[2] Range Tower - Cut "G", WB, front tower [27.793006, -82.587142], (27° 47' 35", -82° 35' 14"). Leave to Port.	Leg: 2.9 nm.
[3] Chai Marks - Pt. Pinellas, #6, red, fishing, 4 sec, [27.708368, -82.609451], (27° 42' 30", -82° 36' 34"). Leave to Port.	Leg: 3.8 nm.
[4] Range Tower - Cut "F", SB, front tower [27.740905, -82.522683], (27° 44' 27", -82° 31' 22"). Leave to Port.	Leg: 5.2 nm.
[Checkered Flag] TSS "x" Mark [27.782223, -82.470333], (27° 46' 56", -82° 28' 13"). Finish line.	Leg: 5.0 nm.
	Leg: 4.0 nm.

Course D