



SAILING INSTRUCTIONS
FOR BOTH SPRING AND FALL DBC GULF REGATTAS
Feb. 3, March 25, April 22 Sept. 16, Oct 21, Nov. 11

DUNEDIN BOAT CLUB
Organizing Authority

1. Rules

1.1 The regattas will be governed by the rules as defined in the current *Racing Rules of Sailing*, the current WPRHF rules and Dunedin Boat Club.

1.2 This is a WPHRF Category 4 event. Vessels are required to comply with the safety and crew requirements for Category 4 as well as have an enclosed cabin and life lines.

2. Notice to Competitors

2.1 The Official Notice Board will be on www.yachtscoring.com

3. Changes to Sailing Instructions

3.1 All changes will be posted on Yacht Scorings Notice Board. Any changes in instructions will be posted before 8am the day of the race. Any change of schedule will be posted by 8pm the evening before the race.

4. Signals made Ashore

4.1 There will be no signals made ashore. All will be posted on Yacht Scoring.

5. Communication

5.1 All communication to and from the Race Committee will occur on VHF 72.

6. Racing Area

6.1 All racing will take place approximately 2 miles south of Clearwater Pass and 2 miles west of Sand Key.

6.2 Appendix A displays the racing area and approximate mark placement.

7. Courses

7.1 Courses will be announced over channel 72 as well as displayed on a board on the stern of the Signal Vessel.

8. Marks

8.1 The marks of the course as well as the pin will be inflatable yellow cylinders.

9. Class Flags



The class flag shall be penant numberal 3

10. The Start

10.1 Prior to the start, each competitor will check in via channel 72 or by sailing past the Signal boat on starboard tack giving their boat's name and sail number.

10.1 The start shall be between the orange flag on the signal boat and the pin.

10.2 All classes shall start together under pennant #3

10.3 A courtesy alert horn will be given one minute before the warning signal

10.4 All races will start according to RR 26 with a 5 minute sequence.

11. Shortening Course

11.1 The course will be shortened by the Signal Boat moving to the final mark of the course and posting the shortened course flag in place of the blue flag on the port side. The finish will then be between the shortened course flag and the course side of the mark of the race.

12. The Finish

11.1 The finish line will be between a blue flag on port side of the Signal vessel and the course side of the yellow cylinder pin mark.

13. Time Limit

12.1 The time limit for finishing will be 4pm.

14. Scoring

13.1 All scoring will be process through Yacht Scoring using Time on Time.

13.2 The Low Point scoring system will be used except all races will count.

15. Awards

15.1 Awards will be presented to first, second and third place competitors.

15.2 Awards will be presented at a Competitor's Post Regatta Social at the Clubhouse of Dunedin Boat Club to be announced and held close to the completion of the regatta.

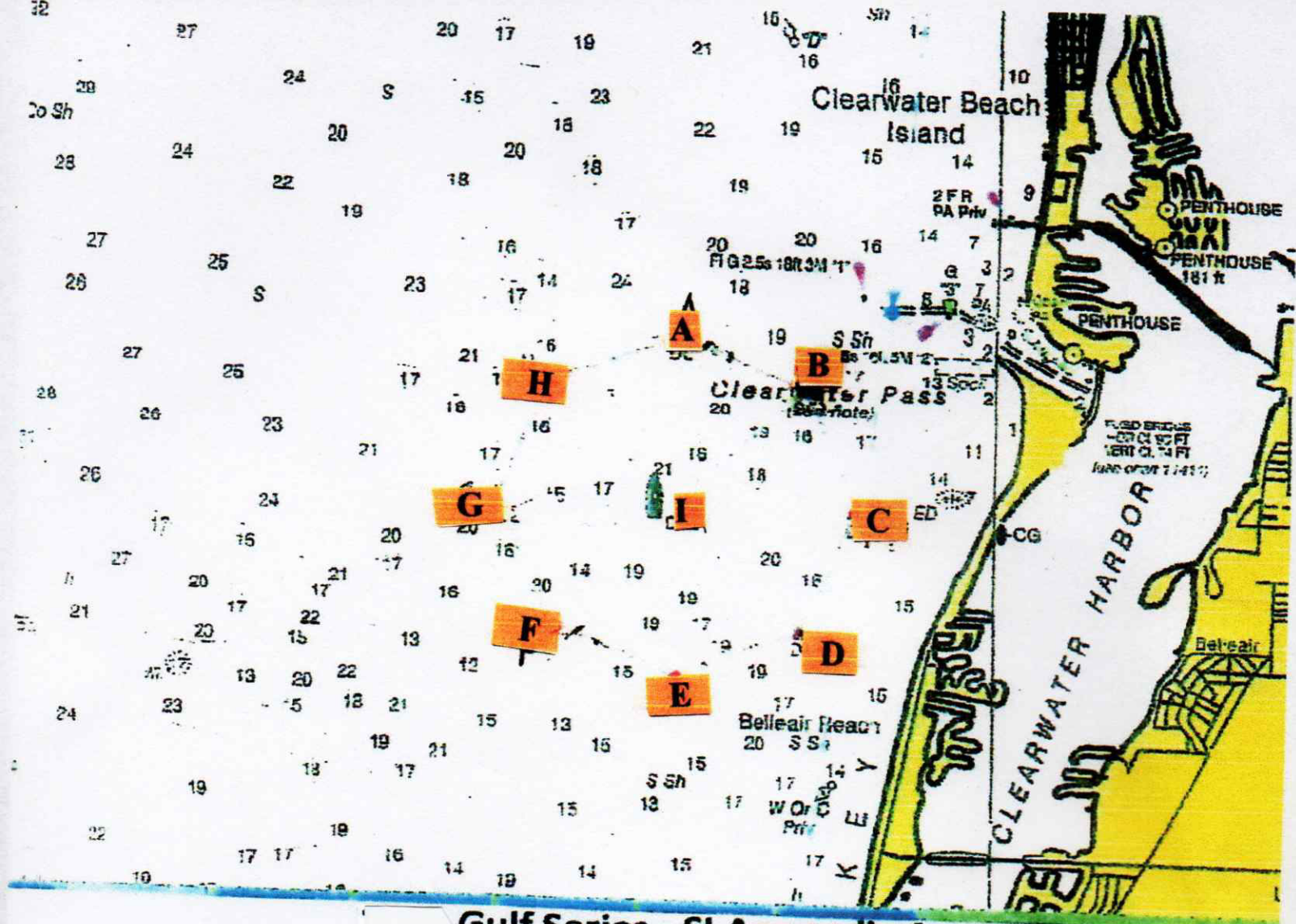
16. Protests and Request for Redress

16.1.1 It is fully hoped that all protest situations will be resolved on the water in a sportsmanlike manner.

16.2 Anyone planning to protest or ask for redress must be displaying a red protest flag from their boom from the time of the protest until they cross the finish line. The Race Committee should be notified by VHF radio on channel 72 immediately after crossing the finish line.

16.3 The parties of the protest will be notified of the time and place of the hearing as soon as feasible.

16.4 Protest forms are on www.yachtscoring.com. They must be filled out and presented to the race chairman by 2000 the day of the race.



Gulf Series - SI Appendix A

Mark #	Lat	Long
A	27 58.0 N	082 52.0 W
B	27 57.7 N	082 51.2 W
C	27 57.0 N	082 50.9 W
D	27 56.3 N	082 51.2 W
E	27 56.0 N	082 52.0 W
F	27 56.3 N	082 52.8 W
G	27 57.0 N	082 53.1 W
H	27 57.7 N	082 52.8 W
I	27 57.0 N	082 52.0 W