



SOUTHERN BAY RACE WEEK

June 1 - 4, 2023

SAILING INSTRUCTIONS

**Organizing Authorities:
Hampton Yacht Club
Cruising Club of Virginia
Old Point Comfort Yacht Club**

The notation (DP) after a rule means that, at the discretion of the Protest Committee, the penalty for a breach of that rule may be less than DSQ. The notation (RC) after a rule means that only the Race Committee or Protest Committee can protest a breach of that rule.

1. RULES

- 1.1** The regatta will be governed by the Racing Rules of Sailing, 2021-2024, as modified herein.
- 1.2** US Sailing Prescriptions to RRS 63.2 will not apply.
- 1.3** Appendix V1 (Penalty at the Time of the Incident) applies for all fleets on the PHRF and One-Design Courses all courses. For the Cruising Course, RRS 44.1 applies.
- 1.4** The Viper Class Rule requiring the use of class bow numbers will be in effect.

2. ENTRIES

- 2.1** The regatta is open to monohull keelboats over 20 feet LOA.
- 2.2** All participating boats must meet current US Sailing Nearshore Safety Equipment Requirements, except that One-Design Fleets must meet safety standards of their class rules.
- 2.3** Eligible boats may enter at: <https://yachtscoring.com/emenue.cfm?eID=15611>
OR by completing an official SBRW Entry Form and mailing it to Lin McCarthy at 4401 Chesapeake Ave, Hampton, VA 23669.
- 2.4** All boats, except those in the SBRW Cruising Class, must have a current, valid measurement certificate on file with their appropriate Class Association.
 - a. PHRF ratings will be those posted on the PHRF of the Chesapeake Valid List at the time of the regatta or a temporary rating issued by a handicapper of PHRF of the Chesapeake.
 - b. SBRW Cruising Class ratings will be assigned by the Race Committee and may not be appealed.
 - c. ORC Cruisers must have a current, valid ORC Club Rating Certificate.
- 2.5** An entered boat may not change fleets later than 1800 on Thursday, June 1.
- 2.6** The owner/skipper of each boat entered shall be responsible for the actions of his/her crew and guests. The legal drinking age in Virginia is 21 years old. Proof of age will be required. In the event of a serious breach of conduct, sportsmanship, destruction of property, under age drinking, or failure to comply with a request from any regatta official, the boat or competitor may be subject to expulsion from the regatta.

3. BOAT REQUIREMENTS

3.1 A bow number/decal will be supplied to each boat and shall be properly affixed to both sides of the hull at all times while racing. Mounting instructions will be supplied with the decal. *(DP)*

3.2 Once launched, all boats (except Vipers and Melges 24s) shall remain in the water until the conclusion of the regatta, except with prior written permission of the PRO. *(DP)*

3.3 All boats (except SBRW Cruising Class) shall display the sail number issued by their National Authority (US Sailing) OR the number as maintained by their fleet or class. **All sail numbers on a boat must be the same**, except with prior written permission from the PRO. *(DP) (RC)*

3.4 From the backstay, each boat shall display her class flag or ribbon as per Appendix F. *(RC)*

4. NOTICES TO COMPETITORS & CHANGES TO SAILING INSTRUCTIONS

4.1 All official Notices to Competitors and Changes to the Sailing Instructions will be posted on the electronic Yacht Scoring Official Notice Board (ONB).

4.2 It is the responsibility of each competitor to periodically check the ONB for any notices and/or S.I. changes.

4.3 Changes to these Sailing Instructions will be posted on the ONB by 0830 on the day they will take effect, except that any change to the schedule of races will be posted no later than the expiration of the protest time limit on the day before it will take effect.

5. SIGNALS MADE ASHORE

5.1 Signals made ashore will be displayed at the HYC flagpole.

5.2 The display of Flag "AP" ashore accompanied by two sound signals means the start of racing is postponed. The lowering of Flag "AP" ashore with one sound signal means the Warning Signal for the next race shall be made in not less than 60 minutes. This changes Race Signals "AP".

5.3 If possible, any abandonment, postponement ashore, or relocation of racing area for any fleet(s) will be posted on the ONB by 0830 and broadcast on the designated VHF fleet radio channels for as long as the RC deems necessary.

6. RACING AREAS AND RENDEZVOUS

6.1 PHRF Course:

- (a) Friday & Sunday:** Multiple windward/leeward races in harbor. (See Appendix B)
Rendezvous at: 36 56.97 N 76 22.40 W Y N "J" NE Off Craney Island
- (b) Saturday:** Multiple windward/leeward races in harbor. (See Appendix B)
Rendezvous at: 36 58.13 N 76 22.00 W R N "20" Off Hampton Flats

6.2 One-Design Course:

- (a) Friday & Sunday:** Multiple windward/leeward races in harbor. (See Appendix C)
Rendezvous at: 36 58.13 N 76 22.00 W R N "20" Off Hampton Flats
- (b) Saturday:** Multiple windward/leeward races in harbor. (See Appendix C)
Rendezvous at: 36 56.97 N 76 22.40 W Y N "J" NE Off Craney Island

6.3 Cruising Course:

- (a) Saturday & Sunday:** One Open Course race in Bay each day. (See Appendix D)
Rendezvous at: 37 01.98 N 76 15.75 W R "2" Off Buckroe
- ** Note 1:** If Cruising Course racing is relocated to harbor Saturday and/or Sunday:
Rendezvous at: 37 00.18 N 76 20.28 W R "4" Hampton River
For racing in the harbor, use Appendix E.

**** Rendezvous locations are approximate. The RC may locate the starting line within 1.5 nm of the designated rendezvous point without flying Flag L.**

**** Flag "A" displayed with no sound as boats finish means "No more racing today".**

7.0 DAILY SCHEDULES

Thursday, June 1

Bow #s Available	Noon
Check-In/Registration	1600
Welcome Party	1800
Skippers Meeting	1900

Friday, June 2

Warning Signal	1000
Party Tent Open	1600
Pizza Night Party	1800
Daily Awards	1900

Saturday, June 3

Warning Signal	1000
Party Tent Open	1600
Post-Race Party	1800
Daily Awards	1900

Sunday, June 4

Warning Signal	1000
Party Tent Open	1500 (approx.)
(Doyle Dawgs & Drinks)	
Final Awards Ceremony (ASAP)	

*** On Sunday, no starting sequence will begin after 1415.**

8. CLASSES, FLEET SPLITS, AND ORDER OF STARTS

8.1 Classes, Fleet Splits and Order of Starts (Appendix F) will be officially announced, posted, and distributed at the Thursday Skippers Meeting. Prior to that, preliminary, unofficial information may be posted and updated at HYC and on the event website at www.yachtscoring.com.

8.2 Classes will be organized and, if necessary, sub-divided to produce the best racing.

9. COURSES

9.1 RCs will display course information prior to the warning signal for each race and may broadcast course information via the designated radio channel for that course.

9.2 The bearing and distance shown on the course board is to Mark 1 (Long Weather Mark). Mark 2 (Short Weather Mark) will be set approx. 0.2 – 0.3 nm to leeward of Mark 1.

9.3 Cruising Course options are as per Appendix D (Bay) and E (Harbor).

10. MARKS

10.1 One-Design & PHRF Drop Mark Descriptions - Appendix B (PHRF) and C (One-Design):

Mark 1 (PHRF)	5' Orange Tetrahedron
Mark 1 (OD)	5' Red Tetrahedron
Offset (OD only)	Red Ball
Mark 2 (Both)	3' Orange Tomato
Change Mark (Both)	3' Yellow Tomato
Leeward Gate (Both)	3' Yellow "West Marine" Inflatables
Starting Pin (Both)	3' Green Tomato
Finish Pin (Both)	2' Red Cylinder

10.2 For Cruising Courses: See Appendix D. If racing relocated to harbor, see Appendix E.

11. BOAT CHECK-IN

Before the warning signal for her first race of each day, each boat shall pass by the stern of the RC Signal Boat and hail her name and/or sail number until acknowledged by the RC. *(DP) (RC)*

12. THE START

12.1 Races will be started using RRS 26 as modified by Instruction 12.2 below.

12.2 Approximately one (1) minute prior to the beginning of a starting sequence, the RC will make an Attention Signal consisting of a series of short sounds. This is not a timed signal.

12.3 For drop mark courses, the starting line will be between the staff displaying an orange flag on the RC Signal Boat at the starboard end of the line and a 3' green tomato at the port end.

12.4 For Cruising Courses, the starting line will be between the staff displaying an orange flag on the RC Signal Boat and the adjacent government mark.

13. COLLISION WITH RACE COMMITTEE BOAT

If any boat collides with a Race Committee vessel and causes injury or serious damage, her penalty shall be to retire.

14. RECALLS

14.1 Individual Recalls will be signaled in accordance with RRS 29.1. Additionally, the RC will attempt to notify premature starters on the designated VHF radio channel for that course.

14.2 Failure of a transmission to be made or received, promptness of the notification, or the position of a boat in the sequence shall not be grounds for redress. This changes RRS 62.1(a).

15. COURSE CHANGE AFTER START

15.1 To change the next leg of the course, the RC will lay a new mark and remove the original mark as soon as practicable.

15.2 For the PHRF Course only, if Code Flag "C" is displayed over a pink flag, it indicates that the course change is only for the final weather leg for all fleets.

15.3 Only one Change Mark will be set with any course change. All fleets shall round this single Change Mark. No Offset Mark will be set with any Change Mark. The distance to the Change Mark will be somewhere between the distances to the original Marks 1 & 2.

16. SHORTENING COURSE

16.1 Courses may be shortened as per RRS 32.

16.2 The final sentence of RRS 32.2 is changed to read:

"A course may be shortened even if a boat has already passed the mark at which the course is to be shortened, provided an RC boat was on station and recorded the exact time at which that boat rounded the mark."

17. THE FINISH

17.1 For downwind finishes, the finish line will be on the opposite side of the RC Signal Boat from the starting line. The finish line will be between the staff displaying a blue flag on the RC Finish Boat at the starboard end of the line (looking downwind) and a red cylinder at the port end. The finish line will be located approx. 600' to leeward of the leeward mark or gate.

17.2 For upwind finishes, the finish line will be between the staff displaying a blue flag on the RC Finish Boat and Mark 1 or, if the course has been changed, the Change Mark.

17.3 For the Cruising Course, the finish line will be between the staff flying a blue flag on the RC Finish Boat and the adjacent government mark.

17.4 For all courses, each boat is responsible for taking her own finish time and recording the name and/or sail number of the boat finishing directly ahead and astern of her. This information shall be provided to the RC or Judges upon request.

18. THE PENALTY SYSTEM

18.1 On the PHRF and One-Design Courses, Appendix V1 (Penalty at the Time of the Incident) for all fleets. Appendix V2 (Post-Race Penalties) does not apply.

18.2 On the Cruising Course, RRS 44.1 applies.

19. CALLING BOATS IN

19.1 In the interest of starting another race or completing the day's racing in a timely fashion, the Race Committee may assign a finish position to any boat(s) still racing, provided their position(s) can be determined in a reasonable manner. Such boat(s) will be scored as finished. This changes RRS 28.1, 35, A3, and A4.

19.2 If another race is to be sailed that day, any boats called in as per S.I. 19.1 shall proceed as quickly as possible to the starting area to facilitate prompt starting of the next race. (DP)

20. TIME LIMITS

20.1 For the One-Design Course, any race in which no boat finishes within two (2) hours after the start of her fleet will be abandoned for that fleet. Also, any boat still racing but not finished within 20 minutes after the first boat in her fleet finishes will be scored TLE (Time Limit Expired). This changes RRS 35.

20.2 For the PHRF Course, any race in which fewer than two (2) boats finish within 2 ½ hours after the start of their fleet will be abandoned for that fleet. Also, any boat still racing but not finished within 30 minutes after the second boat in her fleet finishes will be scored TLE.

20.3 For the Non-Spin Fleet only, the race will be abandoned if no boat with a rating over 100 finishes within two (2) hours after the start of that fleet. Also, any boat still racing but not finished within 40 minutes after any boat in the fleet with a rating over 100 finishes will be scored TLE.

20.4 For the Cruising Course:

a. On Saturday, any boat not finished by 1530 will be scored DNF without a hearing.

b. On Sunday, any boat not finished by 1430 will be scored DNF without a hearing.

20.5 A boat scored TLE will, without a hearing, be scored one point more than the number of boats in her fleet who sailed the course properly and finished within the time limit.

20.6 All of the above change RRS 35, A4, A5.1, and A5.2.

21. RETIRING

Any boat retiring from a race or leaving the racing area before racing is concluded for the day shall promptly notify the Race Committee for her course, either by hail or radio transmission on the designated VHF radio channel for that course. Such attempt at notification shall be continued until acknowledged by the Race Committee. This procedure is essential to assist the RC in accounting for all boats at the completion of the race. *(DP) (RC)*

22. SCORING

22.1 All PHRF and SBRW Cruising fleets will be scored Time on Distance.

22.2 ORC Cruisers will be scored with the ORC Time on Time All Purpose Triple Number rating.

22.3 Appendix A2.1 is modified as follows:

a. If fewer than six (6) races are completed, a boat's series score will be the total of her race scores.

b. If six (6) or more races are completed, a boat's series score will be the total of her scores, excluding her worst score.

22.4 The completion of at least one race will constitute a regatta.

22.5 All scoring and race results will be posted as soon as possible on Yacht Scoring. In addition, printed results will be posted on the window at the NE corner of the HYC lounge.

22.6 Daily trophies will be computed by combining all races for that day into a single score.

22.7 All races will be considered separately for overall Race Week scoring.

23. PROTESTS

23.1 The Judges' Table and unofficial Protest Notice Board will be located in the NE corner of the lounge.

23.2 Written protests must be delivered to the Judges' Table within one hour of the RC Signal Boat for that course docking at HYC. Protest forms will be available at the Judges' Table.

23.3 All protest information including time limits, protests filed, and approximate hearing schedules will be posted on the electronic Official Notice Board (ONB) within 15 minutes of the end of protest time. In addition, courtesy written information may be posted on the Protest Board located near the Judges' Table. This posting is as a courtesy only and is not official.

23.4 It is each boat's responsibility to check the electronic Yacht Scoring ONB to see if she is cited in a protest or may have an interest at a hearing.

23.5 US Sailing Prescriptions to RRS 63.2 will not apply.

23.6 If the RC posts a list of boats scored NSC, OCS, ZFP, UFD, or BFD before the Protest Time Limit, a request for redress based on the posted score shall be made no later than fifteen (15) minutes after the Protest Time Limit. This changes RRS 62.2

23.7 On Sunday, a request for redress from a jury decision shall be delivered no later than thirty (30) minutes after the decision was posted. This changes RRS 62.2.

24. RADIOS

24.1 All boats shall carry a working VHF radio. *(DP)*

24.2 Except in an emergency, a boat that is racing shall not make voice or data transmissions and shall not receive voice or data communications that are not available to all boats. This restriction also applies to mobile telephones. *(DP)*

24.3 The Race Committee will not respond to transmissions from competitors except to acknowledge retirements, protests, or requests for emergency assistance.

24.4 The Race Committee may make broadcasts regarding RC intentions, courses to be sailed, starting sequence timing information, postponement updates, safety information, etc. These broadcasts are as a courtesy only and in no way relieve competitors of their responsibility to monitor and respond to Race Committee flags and signals.

24.5 Failure of the RC to make a broadcast, the timing of a broadcast, or failure of a boat to hear a broadcast shall not be grounds for redress. This changes RRS 62.1(a).

24.6 The designated radio frequency for each course is:

- | | |
|-----------------------------|---------------|
| a. One-Design Course | VHF-71 |
| b. PHRF Course | VHF-72 |
| c. Cruising Course | VHF-73 |

25. SAFETY

25.1 A boat shall not exercise right of way over, cross in close proximity to, or interfere in any way with reasonable transit of the race area by military vessels, commercial freighters, tugs and tows, or other commercial vessels that are unable to respond readily. Any boat protested under this rule shall have the burden of proving that she did not interfere with the restricted vessel.

25.2 Protests of violations of this rule may be filed by a competitor as per RRS 60.1(a)) or by the Race Committee as per RRS 60.2(a). In addition, the Race Committee, Protest Committee, or Organizing Authority may protest a boat as a direct result of a report received from an offended vessel and/or local port authority.

25.3 RRS 40 (Personal Buoyancy) is changed to read in its entirety, "It shall be the individual responsibility of each competitor to wear adequate personal buoyancy when conditions warrant."

26. AWARDS PARTIES

26.1 On Friday, Saturday, and Sunday:

- Daily awards will be presented to the top three (3) boats in each fleet.
- A "Boat of the Day" Flag will be presented to the outstanding boat on each circle.

26.2 In addition, on Sunday:

- Overall Awards will be presented to the top three (3) boats in each fleet.
- The Black Seal Cup will be awarded to the boat judged the "Boat of the Regatta".
- PHRF Southern Bay Championship Trophies will be presented to the winner of each PHRF Fleet, plus the PHRF "Top Dog" Trophy will be presented.
- The Viper Atlantic Coast Championship Trophy will be presented.

26.3 SBRW Beer Raffles are held each day. Bow numbers are drawn and prizes are presented to the winning boats. You must be present to win.

26.4 Food, beer, and other libations are available each evening both under the Regatta Tent and in the HYC lounge located adjacent to the Regatta Tent. All participants and guests are welcome.

27. MEDIA RIGHTS

By their entry, competitors give absolute right and permission for any photograph or video footage of themselves or the boat they are sailing to be published in any media the regatta organizers see fit.

28. DISCLAIMER OF LIABILITY

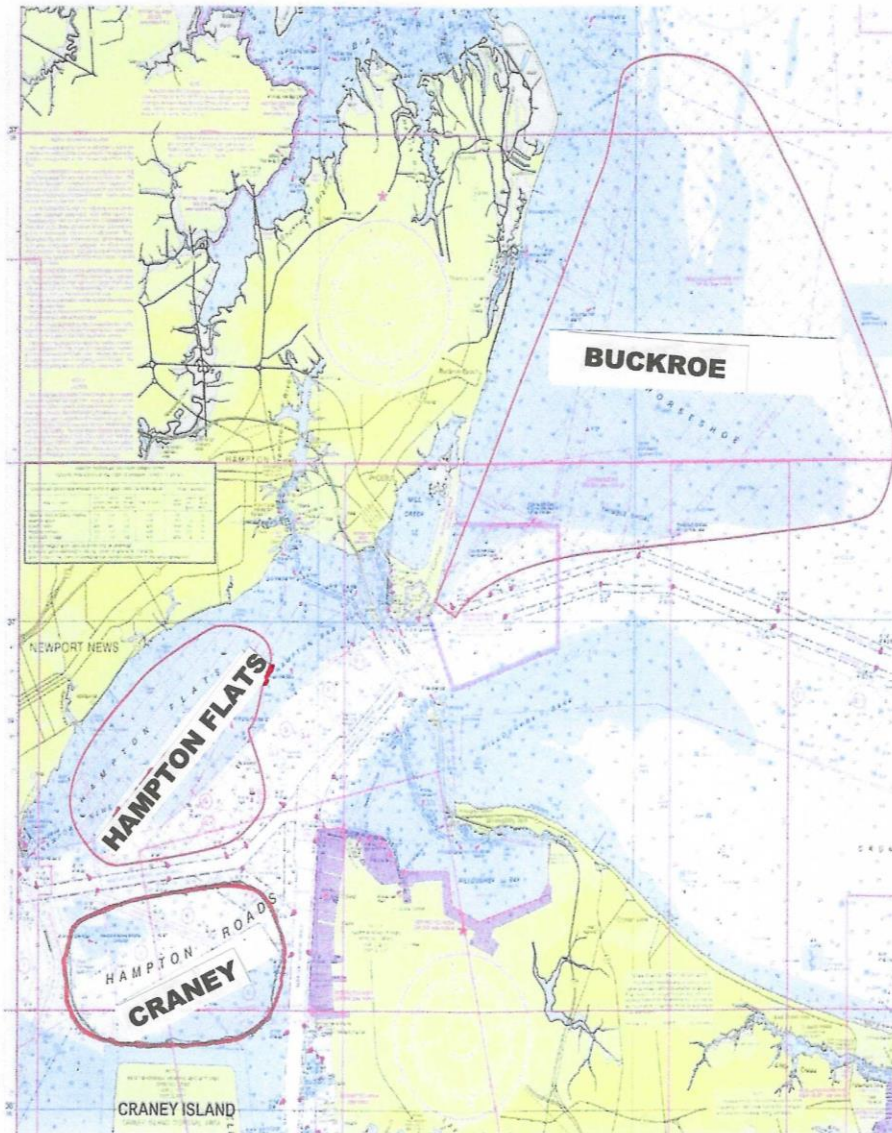
28.1 Competitors participate in the regatta entirely at their own risk. See Rule 3, Decision to Race. The organizing authority will not accept any liability for material damage or personal injury or death sustained in conjunction with or prior to, during, or after the regatta.

28.2 It is the sole responsibility of the Skipper to ensure the boat complies with all class rules and that the boat is sound, seaworthy, and manned by a competent crew of appropriate number.

29. REGATTA CONTACTS AND OFFICIALS:

Regatta Chairman	=	Jack Pope
Registration & Info	=	Lin McCarthy (757) 850-4225 mcbear@earthlink.net
Principal Race Officer	=	John McCarthy
One-Design Course	=	Brian Deibler
Cruising Course	=	Sergio Diehl
Chief Judge	=	Jerry Thompson
Official Scorer	=	Leanne Cranfill
Trophy Chair	=	Kim Deibler
Logistics Officer	=	Tom Connors

APPENDIX A – RACING AREAS



FRIDAY

PHRF
OD

CRANEY
HAMPTON FLATS

SATURDAY

OD
PHRF
CRU & Multi

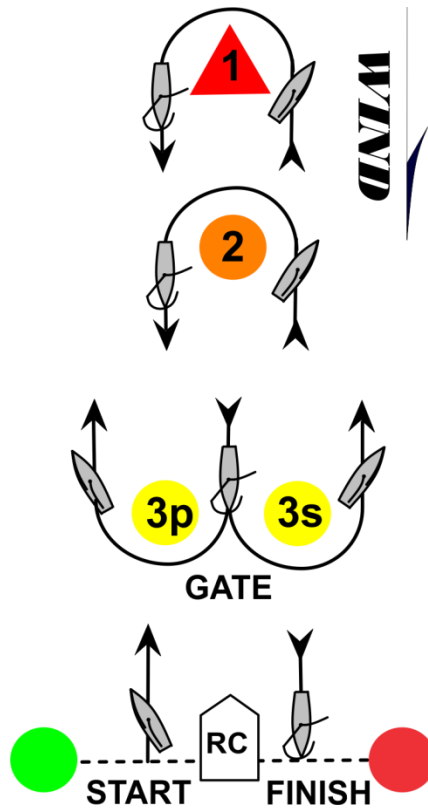
CRANEY
HAMPTON FLATS
BUCKROE

SUNDAY

PHRF
OD
CRU & Multi

CRANEY
HAMPTON FLATS
BUCKROE

APPENDIX B - PHRF COURSE



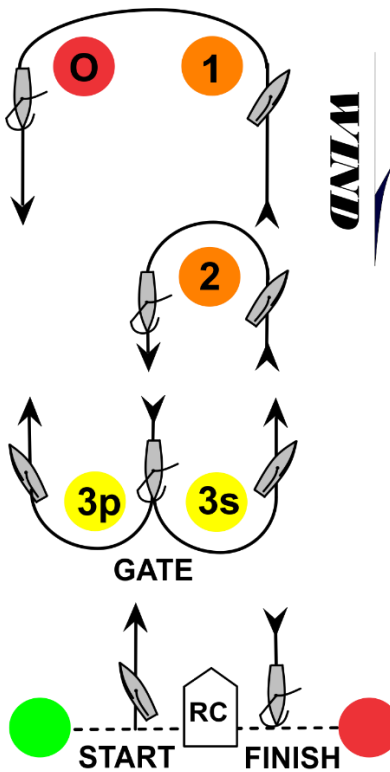
* Course Designations:

- Course V = Start - Mark 1 - Gate - Mark 1 - Gate - Mark 1 - Finish (Downwind)
 - Course X = Start - Mark 1 - Gate - Mark 1 - Gate - Mark 2 - Finish (Downwind)
 - Course A = Start - Mark 1 - Gate - Mark 1 - Finish (Downwind)
 - Course B = Start - Mark 1 - Gate - Mark 2 - Finish (Downwind)
 - Course C = Start - Mark 2 - Gate - Mark 2 - Finish (Downwind)
 - Course W = Start - Mark 1 - Gate - Mark 1 - Gate - Finish (Upwind)
 - Course Z = Start - Mark 1 - Gate - Finish (Upwind)
-

* Flag "C" displayed over a **PINK** flag indicates the course change is for the final weather leg only.

- * All marks, except the gate, shall be left to PORT.
- * If only one gate mark is present, boats shall round it to PORT.
- * The angle of the gate may be adjusted at any time without signal.

APPENDIX C - ONE-DESIGN COURSE



*** Course Designations:**

- Course A = Start - Mark 1 - Offset - Gate - Mark 1 - Offset - Finish (Downwind)
 - Course B = Start - Mark 1 - Offset - Gate - Mark 2 - Offset - Finish (Downwind)
 - Course C = Start - Mark 2 - Offset - Gate - Mark 2 - Offset - Finish (Downwind)
 - Course W = Start - Mark 1 - Offset - Gate - Finish (Upwind)
 - Course Z = Start - Mark 2 - Offset - Gate - Finish (Upwind)
-

- * An Offset Mark will be set approx. 200' to port of Mark 1.
 - * No Offset Mark will be set with Mark 2 or with any Change Mark.
-

- * All marks, except the gate, shall be left to PORT.
- * If only one gate mark is present, round it to PORT.
- * The angle of the gate may be adjusted at any time without signal.

APPENDIX D - CRUISING COURSE (BAY)

MARK DESCRIPTIONS AND LOCATIONS

Mark "Y"	Day Beacon R "2" (Off Buckroe)	37 01.98 N	76 15.75 W
Mark "X"	Fl G 2.5s "3" (Salt Ponds Entrance)	37 03.23 N	76 15.65 W
Mark "M"	Fl 10s 55ft 19M HORN (Thimble Shoal Light)	37 00.87 N	76 14.40 W
Mark "Z"	Oc 4s 58ft (Tall Navy Range Light)	37 01.03 N	76 16.67 W
Mark "V"	Fl G 4s "1 BR" (Back River Entrance)	37 05.62 N	76 15.07 W

POSSIBLE COURSES

**** ALL FLEETS START & FINISH AT MARK "Y"**

COURSE A = "M" (Port) – "V" (Port) – Z (Port) – Finish at "Y" (12.3 nm)

COURSE B = "V" (Star) – "M" (Star) – Finish at "Y" (10.0 nm)

COURSE C = "M" (Port) – "X" (Port) – "Z" (Port) – Finish at Y (7.7 nm)

COURSE D = "X" (Star) – "M" (Star) – "Z" (Star) – Finish at "Y" (6.9 nm)

COURSE E = "X" (Star) – "M" (Star) – Finish at "Y" (5.4 nm)

**** Lat/Lons are approximate and not intended for navigation.**

**** Courses to be sailed will be posted on the RC Signal Boat prior to Warning.**

**** Radio communications with the RC will be via VHF- 73.**

**** Should racing be relocated to the harbor, racing will be conducted per Appendix E.**

APPENDIX E – CRUISING COURSE IN HARBOR

MARK DESCRIPTIONS AND LOCATIONS

** All fleets shall start/finish at "A", unless the course is shortened after the start.

Mark "A"	Day Beacon R "4" at Mouth of Hampton River		
Mark "I"	Day Beacon G "1"	Hampton Flats	36 59.12 N 76
21.60 W			
Mark "J"	FL R 2.5s R "2NN"	Newport News	36 58.00 N 76
20.70 W			
Mark "L"	FL R 4s R "6"	Newport News	36 57.60 N 76
21.48 W			
Mark "M"	FL R 2.5s R "8"	Newport News	36 57.50 N 76
22.35 W			
Mark "C"	R N "14"	Hampton Bar	36 59.77 N 76
19.40 W			
Mark "R"	R N "16"	Hampton Bar	36 59.27 N 76
20.35 W			
Mark "H"	R N "20"	Hampton Flats	36 58.10 N 76
21.99 W			
Mark "T"	Day Beacon R "18"	Hampton Bar	36 58.77 N 76
21.07 W			
Mark "E"	FL R 2.5s 15ft 4M "2"	Hampton Bar	36 59.03 N 76
21.37 W			

POSSIBLE COURSES

Course A – Start at "A" – "I" (Port) – "M" (Port) – "C" (Port) – "H" (Star) –
"E" (Star) – Finish at "A" (11.7 nm)

Course B – Start at "A" – "I" (Port) – "L" (Port) – "R" (Port) – "H" (Star) –
"E" (Star) – Finish at "A" (9.2 nm)

Course C – Start at "A" – "I" (Port) – "L" (Port) – "R" (Port) – "T" (Star) –
"E" (Star) – Finish at "A" (7.5 nm)

Course D – Start at "A" – "I" (Port) – "J" (Port) – "R" (Port) – "T" (Star) –
"E" (Star) – Finish at "A" (6.6 nm)

** Lat Lons are approximate and not intended for navigation.

** Courses to be sailed by each fleet will be posted on the RC Signal Boat prior to Warning.

** The Race Committee will communicate with the fleet on VHF-73.

APPENDIX F FLEET SPLITS, CLASS FLAGS, & ORDER OF STARTS

PHRF COURSE

<u>Fleet (Backstay)</u>	<u>Ratings</u>	<u>Class Flag (RC Boat)</u>	<u>Class Flag</u>
SUPER A	Under 44	Code Flag "1"	Code Flag "1"
PHRF A	44-99	Code Flag "9"	Code Flag "9"
PHRF B/C	100 & Over	Code Flag "6"	Code Flag "6"
NON-SPIN	All Ratings	Code Flag "5"	Code Flag "5"

ONE-DESIGN COURSE

<u>Fleet (Backstay)</u>	<u>Ratings</u>	<u>Class Flag (RC Boat)</u>	<u>Class Flag</u>
Viper 640	One Design	Viper Logo	None
Melges 24	One-Design	Yellow Flag	Yellow Ribbon
J-24	One Design	Green Flag	Green Ribbon

CRUISING COURSE

<u>Fleet (Backstay)</u>	<u>Ratings</u>	<u>Class Flag (RC Boat)</u>	<u>Class Flag</u>
ORC Cruiser	All ratings	Green	Green Flag
Cruising A	Under 160	White Flag	White Flag
Cruising B	Over 160	Purple Flag	Purple Ribbon

Note: All boats (except Vipers) shall display the appropriate class flag or ribbon from the backstay. (DP)

Note: For fleets flying ribbons, the appropriate ribbon will be provided to each boat in her Skippers Bag given out at Check-In Thursday.