

PERFORMANCE 40 CLASS NATIONAL CHAMPIONSHIPS 7 – 8 OCTOBER 2023

ORGANISING AUTHORITY
ROYAL YACHT SQUADRON

SAILING INSTRUCTIONS

The notation '[DP]' in a rule in the Sailing Instructions means that the penalty for a breach of that rule may, at the discretion of the protest committee, be less than disqualification.

1. RULES

1.1 See **Notice of Race 1**.

2. CHANGES TO SAILING INSTRUCTIONS

2.1 Any change to the Sailing Instructions (SIs) made ashore will be posted by 0900 on the day it will take effect, except that any change to the schedule of races will be posted by 2000 on the day before it will take effect.

3. COMMUNICATIONS WITH COMPETITORS

3.1 Notices to competitors will be posted on the Official Notice Board (ONB). The ONB will be online at www.rys.org.uk.

3.2 The Race Committee (RC) intends to broadcast race information and course information by VHF Ch 05 and repeated on the Event Telegram group. See Addendum C.

3.3 On each racing day, the RC will provide a morning briefing by VHF Ch 05 at 0900 and repeated on the event Telegram group.

3.4 Competitors wishing to communicate with the Race Committee should do so on VHF Ch 77.

4. CODE OF CONDUCT

4.1 Competitors and support persons shall comply with reasonable requests from race officials.

5. SIGNALS MADE ASHORE AND AFLOAT

5.1 Signals made ashore will be displayed at the RYS Flagstaff and advised on the event Telegram group.

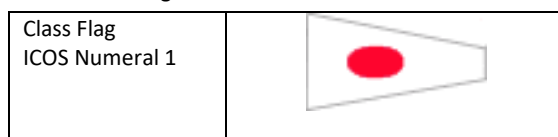
5.2 When flag AP is displayed ashore, "1 minute" is replaced by "not less than 45 minutes". This changes Race Signals AP.

6. SCHEDULE

6.1 See **Notice of Race 9**.

7. CLASS FLAGS

The class flag is shown below.



8. RACING AREA

8.1 Racing will take place in the Solent and adjacent waters.

9. COURSES

9.1 The courses to be sailed will be predominantly windward / leeward (W/L) configuration as described in Addendum B.

9.2 Soon after the orange flag attention signal is displayed, and before the warning signal, the RC signal vessel will display the course, approximate bearing and distance to Mark 1. The course, compass bearing and distance to Mark 1 will also be announced on VHF.

9.3 It is the intention of the RC to make the last race each day a "round the cans" race. Courses will be set in the Solent using the Solent Two Character Codes. See Addendum A and D of these Sis.

9.4 The "round the cans" courses to be sailed will be announced by the RC (call sign: Castle Two) on VHF Channel 05 before the Warning Signal and again as soon as possible after the Preparatory Signal. The course will also be sent via the event Telegram group. See Addendum C for details of the Telegram group.

10. MARKS

10.1 With reference to Addendum B, marks 1, 1a, 4s & 4p will be orange inflatable marks.

10.2 The starting and finishing marks for W/L courses will be between a committee vessel and a black inflatable mark.

10.3 When a new mark has been laid for W/L courses to change the next leg of a course it will be a black inflatable mark.

10.4 When in a subsequent change a new mark is replaced, it will be replaced by an original orange mark.

10.5 Marks for "round the cans" races will be fixed navigation buoys, racing marks and inflatable buoys.

11. OBSTRUCTIONS

11.1 All yachts shall comply with [Associated British Ports Notice to Mariners No 06 of 2023](#) giving details of a Precautionary Area and Moving Prohibited Zone (MPZ). The MPZ shall rank as an obstruction for the purposes of RRS 19 and 20.

11.2 Any official boat in close attendance to a craft in difficulty is an obstruction.

12. THE START

12.1 Races will be started by using RRS 26.

12.2 To alert boats that a start sequence will soon begin, an **Orange Flag will be displayed with one sound signal not less than 5 minutes before the warning signal.**

12.3 The start line will be between a staff displaying an orange flag on the committee vessel and a black inflatable mark.

12.4 The Race Committee **may** broadcast the sail numbers of individually recalled boats on VHF CH 05, as soon as practicable after Flag X has been displayed.

12.5 A boat that does not start within five (5) minutes after her starting signal will be scored Did Not Start without a hearing. This changes RRS A5.1 and A5.2.

13. CHANGE OF THE NEXT LEG OF THE COURSE

13.1 When a change of the next leg of a W/L course has been signalled, the RC will lay a new mark (or move the finishing line) and remove the original mark as soon as practicable.

13.2 The race committee **may** announce details of any change under SI 13.1 using VHF Ch 05.

13.3 The position of any W/L mark(s) may be adjusted by up to plus or minus 10 degrees relative to previous location and up to approximately 200 metres to windward or leeward without signalling Flag C, a direction signal, a length signal, or a sound signal. This changes RRS 33.

14. THE FINISH

14.1 The finish line for W/L courses will be between a staff displaying a blue flag on the committee vessel and a black inflatable mark.

14.2 The finish line for "round the cans" races will be the Royal Yacht Squadron (RYS) finishing line.

14.3 The RYS finishing line will be between the RYS main flagstaff and 'Alpha' a large Orange Inflatable buoy approximately 300m north of the RYS main flagstaff.

15. PENALTY SYSTEM

15.1 See **Notice of Race 14**.

16. TIME LIMITS

16.1 The Mark 1 Time Limit, Race Time Limit (see RRS 35) and the Target Time are shown in the table below.

Mark 1 Time Limit	Race Time Limit	Finishing Window	Target Race Time
30 mins	90 mins	20 mins	50 – 60 mins

16.2 If no boat has passed Mark 1 within the Mark 1 Time Limit, or if no boat has finished within the Race Time Limit, the race shall be abandoned.

16.3 Finishing Window. The time limit for boats to finish after the first boat sails the course and finishes is 20 minutes.

16.4 Boats still sailing more than 20 minutes after the first boat finishes shall be awarded the points for the place behind the last boat, which has finished the race within this time.

16.5 Target time for each race will be 50 - 60 minutes. Failure to meet the target time will not be grounds for redress. This changes RR62.1(a).

17. HEARING REQUESTS

17.1 The protest limit is 90 minutes after the last boat has finished the last race of the day or the Race Committee signals no more racing today, whichever is later.

17.2 Hearing forms will be available at the Race Office.

17.3 Protest and requests for redress or reopening shall be delivered to the Race Office within the protest time limit.

Contact mobile phone numbers should be included on the protest form.

17.4 Notices will be posted no later than 30 minutes after the protest time limit to inform competitors of the hearings in which they are parties or named as witnesses. Hearings will be held in the protest room located at the RYS.

18. SCORING

18.1 See **Notice of Race 15**.

19. SAFETY REGULATIONS

19.1 [DP] A boat that retires from a race shall notify the Race Committee as soon as possible on VHF Ch 77 or by hailing an official regatta support boat or rib.

20. REPLACEMENT OF EQUIPMENT

20.1 Substitution of damaged or lost equipment is not allowed unless authorised in writing by the Race Committee.

20.2 Requests for substitution shall be made to the Committee at the first reasonable opportunity, which may be after the race.

21. EQUIPMENT AND MEASUREMENT CHECKS

21.1 A boat or equipment may be inspected at any time.

22. SUPPLIED BOATS

22.1 Does not apply.

23. OFFICIAL VESSELS

23.1 Mark laying vessels will be RYS Ribs.

23.2 The Committee Vessel will be a 10m blue hulled motor catamaran – Call Sign Castle Two.

24. SUPPORT PERSON VESSELS

24.1 See **Notice of Race 16**.

25. TRASH

25.1 Trash may be placed aboard official or support person vessels.

26. BERTHING

26.1 See **Notice of Race 18**.

27. HAUL OUT RESTRICTIONS

27.1 See **Notice of Race 19**.

28. DIVING EQUIPMENT AND PLASTIC POOLS

28.1 See **Notice of Race 20**.

29. PRIZES

29.1 See **Notice of Race 24**.

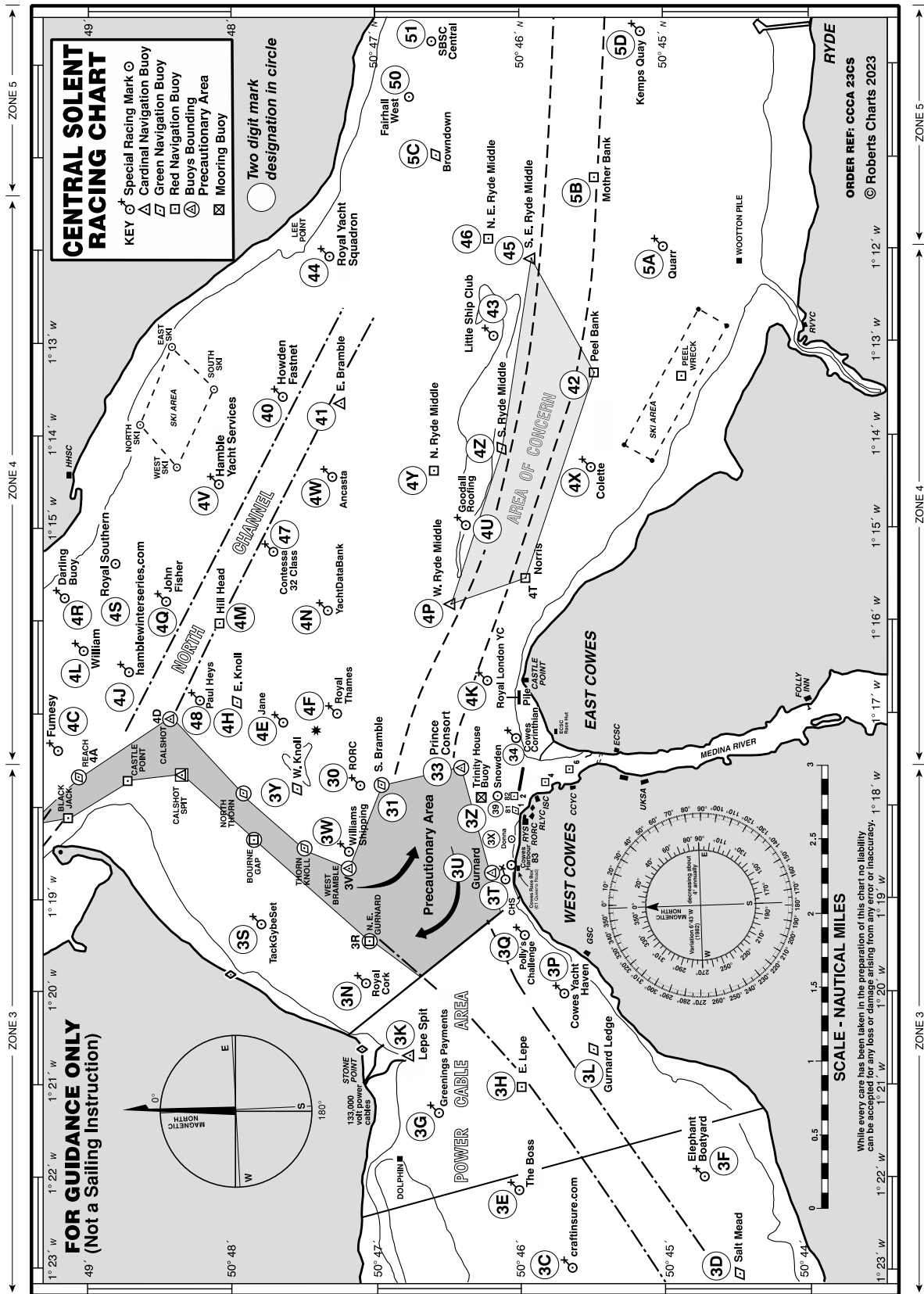
30. RISK STATEMENT

30.1 See **Notice of Race 22**.

31. INSURANCE

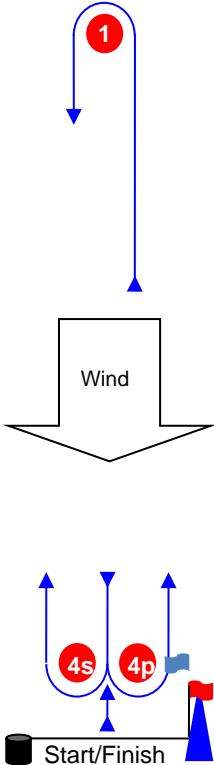
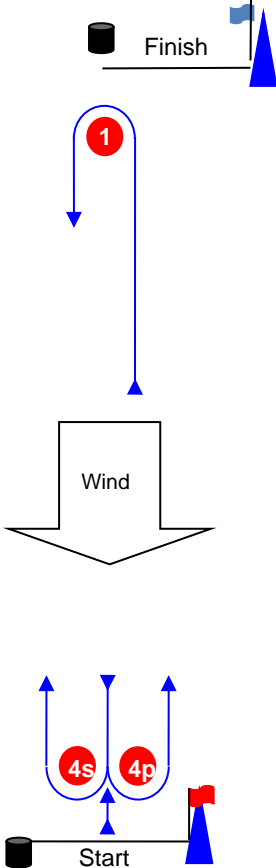
31.1 See **Notice of Race 23**.

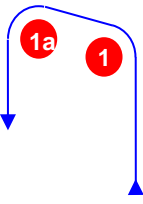
ADDENDUM A – Solent Chartlet with Two Character Codes.



ADDENDUM B – Course configuration.

Course Illustrations – Windward Leeward

<div style="text-align: center; font-size: 2em; font-weight: bold; margin-bottom: 20px;">L</div>  <p>Course: Leeward finish</p> <table border="0" style="width: 100%;"> <thead> <tr> <th style="text-align: left;">Signal</th> <th style="text-align: left;">Mark Rounding Order</th> </tr> </thead> <tbody> <tr> <td>L1</td> <td>Start – 1 – Finish</td> </tr> <tr> <td>L2</td> <td>Start – 1 – 4s/4p – 1 – Finish</td> </tr> <tr> <td>L3</td> <td>Start – 1 – 4s/4p – 1 – 4s/4p – 1 – Finish</td> </tr> <tr> <td>L4</td> <td>Start – 1 – 4s/4p – 1 – 4s/4p – 1 – 4s/4p – 1 – Finish</td> </tr> </tbody> </table>	Signal	Mark Rounding Order	L1	Start – 1 – Finish	L2	Start – 1 – 4s/4p – 1 – Finish	L3	Start – 1 – 4s/4p – 1 – 4s/4p – 1 – Finish	L4	Start – 1 – 4s/4p – 1 – 4s/4p – 1 – 4s/4p – 1 – Finish	<div style="text-align: center; font-size: 2em; font-weight: bold; margin-bottom: 20px;">W</div>  <p>Course: Windward Finish</p> <table border="0" style="width: 100%;"> <thead> <tr> <th style="text-align: left;">Signal</th> <th style="text-align: left;">Mark Rounding Order</th> </tr> </thead> <tbody> <tr> <td>W1</td> <td>Start – 1 – 4s/4p – Finish</td> </tr> <tr> <td>W2</td> <td>Start – 1 – 4s/4p – 1 – 4s/4p – Finish</td> </tr> <tr> <td>W3</td> <td>Start – 1 – 4s/4p – 1 – 4s/4p – 1 – 4s/4p – Finish</td> </tr> </tbody> </table>	Signal	Mark Rounding Order	W1	Start – 1 – 4s/4p – Finish	W2	Start – 1 – 4s/4p – 1 – 4s/4p – Finish	W3	Start – 1 – 4s/4p – 1 – 4s/4p – 1 – 4s/4p – Finish
Signal	Mark Rounding Order																		
L1	Start – 1 – Finish																		
L2	Start – 1 – 4s/4p – 1 – Finish																		
L3	Start – 1 – 4s/4p – 1 – 4s/4p – 1 – Finish																		
L4	Start – 1 – 4s/4p – 1 – 4s/4p – 1 – 4s/4p – 1 – Finish																		
Signal	Mark Rounding Order																		
W1	Start – 1 – 4s/4p – Finish																		
W2	Start – 1 – 4s/4p – 1 – 4s/4p – Finish																		
W3	Start – 1 – 4s/4p – 1 – 4s/4p – 1 – 4s/4p – Finish																		

<div style="text-align: center; font-size: 2em; font-weight: bold; margin-bottom: 20px;">LA / WA</div> 	<p>Course: Windward/leeward with offset mark 1a</p> <table border="0" style="width: 100%;"> <thead> <tr> <th style="text-align: left;">Signal</th> <th style="text-align: left;">Mark Rounding Order</th> </tr> </thead> <tbody> <tr> <td>LA1</td> <td>Start – 1 – 1a – Finish</td> </tr> <tr> <td>LA2</td> <td>Start – 1 – 1a – 4s/4p – 1 – 1a – Finish</td> </tr> <tr> <td>LA3</td> <td>Start – 1 – 1a – 4s/4p – 1 – 1a – 4s/4p – 1 – 1a – Finish</td> </tr> <tr> <td>LA4</td> <td>Start – 1 – 1a – 4s/4p – 1 – 1a – 4s/4p – 1 – 1a – 4s/4p – 1 – 1a – Finish</td> </tr> <tr> <td>WA1</td> <td>Start – 1 – 1a – 4s/4p – Finish</td> </tr> <tr> <td>WA2</td> <td>Start – 1 – 1a – 4s/4p – 1 – 1a – 4s/4p – Finish</td> </tr> <tr> <td>WA3</td> <td>Start – 1 – 1a – 4s/4p – 1 – 1a – 4s/4p – 1 – 1a – 4s/4p – Finish</td> </tr> </tbody> </table>	Signal	Mark Rounding Order	LA1	Start – 1 – 1a – Finish	LA2	Start – 1 – 1a – 4s/4p – 1 – 1a – Finish	LA3	Start – 1 – 1a – 4s/4p – 1 – 1a – 4s/4p – 1 – 1a – Finish	LA4	Start – 1 – 1a – 4s/4p – 1 – 1a – 4s/4p – 1 – 1a – 4s/4p – 1 – 1a – Finish	WA1	Start – 1 – 1a – 4s/4p – Finish	WA2	Start – 1 – 1a – 4s/4p – 1 – 1a – 4s/4p – Finish	WA3	Start – 1 – 1a – 4s/4p – 1 – 1a – 4s/4p – 1 – 1a – 4s/4p – Finish
Signal	Mark Rounding Order																
LA1	Start – 1 – 1a – Finish																
LA2	Start – 1 – 1a – 4s/4p – 1 – 1a – Finish																
LA3	Start – 1 – 1a – 4s/4p – 1 – 1a – 4s/4p – 1 – 1a – Finish																
LA4	Start – 1 – 1a – 4s/4p – 1 – 1a – 4s/4p – 1 – 1a – 4s/4p – 1 – 1a – Finish																
WA1	Start – 1 – 1a – 4s/4p – Finish																
WA2	Start – 1 – 1a – 4s/4p – 1 – 1a – 4s/4p – Finish																
WA3	Start – 1 – 1a – 4s/4p – 1 – 1a – 4s/4p – 1 – 1a – 4s/4p – Finish																

ADDENDUM C – Telegram Instructions.



Telegram

We have set up an official [Telegram](#) group for receiving general information from the Race Office and Race Committee.

If you do not already have the Telegram app installed on your device, please follow the instructions below:

- **Apple iPhones – download and install via the App Store.**
<https://apps.apple.com/app/telegram-messenger/id686449807>
- **Android Phones – download and install via the Google Play Store.**
<https://play.google.com/store/apps/details?id=org.telegram.messenger>

To join the Telegram group please use either the link or the QR code below:

LINK: <https://t.me/+8WhDShwUu5NiZjI8>

QR Code:



ADDENDUM D – Details of Solent Mark Codes

SOLENT AREA MARK CODES 2023

Zone 1 Western Approaches					Zone 3 Mid Solent (W) Continued				
ID	Name	Colour	Lat N	Long W	ID	Name	Colour	Lat N	Long W
1A	Pevenil Ledge	R	50 36.41	01 56.10	3Z	Trinity House Buoy	Y	50 46.31	01 17.75
1B	Poole Bar No 1	G	50 39.29	01 55.14	30	RORC *	Y	50 47.12	01 17.72
1C	Stoneways Marine	Y	50 40.31	01 54.02	31	South Bramble	G	50 46.98	01 17.72
1D	The Rig Shop	Y	50 41.08	01 54.26	33	Prince Consort	BY	50 46.41	01 17.56
1E	Ledge Buoy	Y	50 41.50	01 41.60	34	Cowes Corinthian	Y	50 46.15	01 17.20
1F	Needles Fairway	RW	50 38.24	01 38.98	39	Snowden	Y	50 46.20	01 17.75
1G	South West Shingles	R	50 39.29	01 37.52	Zone 4 Mid Solent (E)				
1H	Bridge	YBY	50 39.63	01 36.88	4A	Reach #	G	50 49.05	01 17.65
1J	Shingles Elbow	R	50 40.37	01 36.05	4B	Coronation	Y	50 49.55	01 17.62
1K	North Head	G	50 42.69	01 35.52	4C	Fumesy*	Y	50 49.21	01 17.46
1L	Needles Lighthouse	RW	50 39.73	01 35.50	4D	Calshot #	BY	50 48.44	01 17.03
1M	Warden	G	50 41.48	01 33.55	4E	Jane *	Y	50 47.67	01 17.00
1N	North East Shingles	BYB	50 41.96	01 33.41	4F	Royal Thames	Y	50 47.20	01 17.00
11	East Hook	R	50 40.58	01 55.23	4G	Chieftain Training*	Y	50 49.45	01 16.91
12	MB/EYE Marine/Christchurch SC	Y	50 42.60	01 40.80	4H	East Knoll	G	50 47.96	01 16.83
13	Parkstone YC	Y	50 39.46	01 55.20	4J	hamblewinterseries.com *	Y	50 48.63	01 16.56
Zone 2 West Solent					4K	Royal London YC	Y	50 46.15	01 16.65
2A	Chewton Glen	Y	50 42.77	01 32.43	4L	William *	Y	50 49.03	01 16.49
2B	Dunford	Y	50 43.38	01 31.54	4M	Hill Head	R	50 48.07	01 16.00
2C	Colten	Y	50 43.83	01 30.86	4N	YachtDataBank	Y	50 47.27	01 15.90
2D	Lymington Yacht Haven	Y	50 44.17	01 30.10	4P	West Ryde Middle	YBY	50 46.48	01 15.79
2E	Circle Marine	Y	50 44.49	01 29.32	4Q	John Fisher*	Y	50 48.46	01 15.72
2F	Berthon	Y	50 44.20	01 29.22	4R	Darling Buoy *	Y	50 49.18	01 15.71
2G	Bridgeworks	Y	50 44.79	01 28.47	4S	Royal Southern*	Y	50 48.86	01 15.43
2H	Draycott's	Y	50 44.30	01 28.16	4T	Norris #	R	50 45.97	01 15.51
2J	Sowley	Y	50 45.11	01 27.34	4U	Goodall Roofing	Y	50 46.43	01 15.09
2K	Cowes Radio	Y	50 44.83	01 26.09	4V	Hamble Yacht Services	Y	50 48.13	01 14.64
2L	Royal Lymington YC	Y	50 43.14	01 31.95	4W	Ancasta	Y	50 47.33	01 14.59
2R	Powder Byrne	Y	50 45.43	01 25.89	4X	Colette	Y	50 45.53	01 14.39
2T	Lymington Bank	R	50 43.10	01 30.85	4Y	North Ryde Middle	R	50 46.61	01 14.31
2U	Tuakana	Y	50 43.67	01 29.50	4Z	South Ryde Middle	G	50 46.13	01 14.16
2X	Solent Bank	R	50 44.23	01 27.37	40	Howden Fastnet	Y	50 47.66	01 13.65
20	Sconce	BY	50 42.53	01 31.43	41	East Bramble	BYB	50 47.23	01 13.64
21	Black Rock	G	50 42.57	01 30.59	42	Peel Bank	R	50 45.49	01 13.35
22	Charles Stanley	Y	50 42.86	01 29.40	43	Little Ship Club	Y	50 46.16	01 13.09
24	Hall Hunter	Y	50 42.86	01 28.42	44	Royal Yacht Squadron	Y	50 47.31	01 12.10
25	Caldwells Estate Agents	Y	50 43.15	01 27.49	45	South East Ryde Middle	YB	50 45.93	01 12.10
26	Hamstead Ledge	G	50 43.87	01 26.18	46	North East Ryde Middle	R	50 46.21	01 11.88
27	Generation	Y	50 42.97	01 28.16	47	Contessa 32 Class	Y	50 47.70	01 15.25
28	Harwoods	Y	50 42.73	01 28.69	48	Paul Heys *	Y	50 48.21	01 16.68
Zone 3 Mid Solent (W)					Zone 5 East Solent				
3A	West Lepe	R	50 45.24	01 24.09	5A	Quarr	Y	50 45.03	01 11.89
3B	Newtown East	Y	50 44.36	01 23.80	5B	Mother Bank	R	50 45.49	01 11.21
3C	craftinsure.com	Y	50 45.64	01 23.12	5C	Browndown	G	50 46.57	01 10.95
3D	Salt Mead	G	50 44.51	01 23.04	5D	Kemps Quay	Y	50 45.18	01 09.65
3E	The Boss	Y	50 46.13	01 22.19	5E	Stokes Bay East	Y	50 46.26	01 08.76
3F	Elephant Boatyard	Y	50 44.72	01 21.95	5F	North Sturbridge	BY	50 45.33	01 08.23
3G	Greenings Payments	Y	50 46.58	01 21.46	5G	Baker Trayte Marine	Y	50 46.42	01 07.90
3H	East Lepe	R	50 45.93	01 21.07	5H	Portsmouth SC	Y	50 46.82	01 07.35
3K	Lepe Spit	YB	50 46.78	01 20.64	5J	KB Dry Stack	Y	50 46.61	01 07.29
3L	Gurnard Ledge	G	50 45.51	01 20.59	5K	Suffolk Sails	Y	50 47.08	01 06.78
3N	Royal Cork*	Y	50 47.07	01 19.88	5M	Gleeds	Y	50 46.11	01 06.52
3P	Cowes Yacht Haven	Y	50 45.68	01 19.98	5N	Mary Rose	Y	50 45.80	01 06.20
3Q	Polly's Challenge	Y	50 45.97	01 19.45	5P	Linnington	Y	50 46.36	01 06.08
3R	North East Gurnard #	R	50 47.06	01 19.42	5Q	Outer Spit ©	YB	50 45.44	01 05.46
3S	TackGybeSet*	Y	50 47.81	01 19.25	50	Fairhall West @	Y	50 46.81	01 10.40
3T	CHS	Y	50 46.10	01 18.87	51	SBSC Central @	Y	50 46.60	01 09.85
3U	Gurnard	BY	50 46.22	01 18.84	© 5Q Outer Spit may only be used if given prior consent by QHM, which must be sought in weekday office hours @ Sundays: SBSC only except Cowes Week See other notes on next page				
3V	West Bramble #	YBY	50 47.20	01 18.65					
3W	Williams Shipping *	Y	50 47.20	01 18.55					
3X	Donna	Y	50 46.10	01 18.43					
3Y	West Knoll	Y	50 47.43	01 17.84					
Zone 3 continued in next column									

All correspondence should be directed to:

The Royal Yacht Squadron, The Castle, Cowes, UK, PO31 7QT. Tel: 01983 292191, Email: mail@rys.org.uk

SOLENT AREA MARK CODES 2023

Zone 6 Eastern Approaches					Zone 8 Local Marks & Positions				
ID	Name	Colour	Lat N	Long W	ID	Name	Colour	Lat N	Long W
6A	No Man's Land Fort	B	50 44.40	01 05.70	8A				
6B	Horse Sand Fort	B	50 45.01	01 04.34	8B				
6C	Warner	R	50 43.87	01 03.99	8C				
6D	Horse Elbow	G	50 44.26	01 03.88	8D				
6E	West Princessa	YBY	50 40.16	01 03.65	8E				
6F	Bembridge Ledge Buoy	BYB	50 41.15	01 02.81	8F				
6G	St Helens Buoy	R	50 43.36	01 02.41	8G				
6H	Dean Elbow	G	50 43.69	01 01.88	8H				
6J	Nab East	R	50 42.86	01 00.80	8J				
6K	Horse Tail	G	50 43.23	01 00.23	8K				
6L	Winner	YB	50 45.10	01 00.10	8L				
6M	Nab End	R	50 42.63	00 59.49	8M				
6N	Dean Tail	G	50 42.99	00 59.17	8N				
6P	New Grounds	BYB	50 41.84	00 58.49	8P				
6R	Nab Tower	B	50 40.08	00 57.15	8Q				
6S	Outer Nab No 2	BYB	50 38.43	00 57.70	8R				
					8S				
					8T				
					8U				
					8V				
					8W				
					8X				
					8Y				
					8Z				
					80				
					81				
					82				
					83				
					84				
					85				
					86				
					87				
					88				
Zone 7 Southampton Water					Zone 9 Laid Marks				
7A	Gymp	R	50 53.07	01 24.16	9A	Windward Laid Mark			
7B	Hythe Knock	R	50 52.83	01 23.81	9B	Windward Spreader Mark			
7C	No 1 Swinging	G	50 53.00	01 23.44	9C	Leeward Laid Mark			
7D	Weston Shelf	G	50 52.71	01 23.26	9D	Leeward Spreader Mark			
7E	Hythe 5	Y	50 52.24	01 23.18	9E	Leeward Gate			
7F	Jib *	Y	50 52.96	01 23.06	9F	Middle Gate			
7H	Moorhead	G	50 52.55	01 22.90	9G	Wing Mark			
7J	Deans Elbow	R	50 52.20	01 22.85	9H	Outer Distance Mark			
7K	NW Netley	G	50 52.31	01 22.73	9J	Finish Mark			
7L	Hovercraft 4	Y	50 52.66	01 22.42	9K	Far Windward Mark			
7N	SWSA/HSC	Y	50 51.76	01 22.28	9L	Far Windward Spreader			
7P	Hovercraft 3	Y	50 52.43	01 22.01	9M	Near Windward Mark			
7Q	Netley	G	50 52.03	01 21.81	9N	Near Windward Spreader			
7R	Lains Lake	R	50 51.59	01 21.65	9P				
7S	Deans Lake	R	50 51.40	01 21.59	9Q				
7T	Hovercraft 2	Y	50 52.21	01 21.58	9R				
7U	Hound	G	50 51.68	01 21.52	9S				
7V	Hovercraft 1	Y	50 51.99	01 21.16	9T				
7W	After Barn	G	50 51.53	01 20.82	9U				
7Y	Cadland	R	50 51.02	01 20.54	9V				
7Z	Greenland	G	50 51.11	01 20.38	9W				
70	Cathead *	Y	50 50.61	01 19.24	9X				
71	Mark *	Y	50 49.56	01 18.94	9Y				
72	Hamble Point	YB	50 50.15	01 18.66	9Z				
73	Bald Head	G	50 49.80	01 18.07					
74	Sposa *	Y	50 49.66	01 17.59					
75	Magazine *	Y	50 52.83	01 23.98					
76	Test	R	50 52.59	01 23.45					
77	Fawley Deep	G	50 50.42	01 19.19					
78	Hook #	G	50 49.52	01 18.30					

Only used for passing and keeping boats out of channel, not for ordinary rounding.
Use of other main channel marks should be minimised

Most yellow race marks are seasonal March-November
* These marks may be in place all year round

Mark codes are mainly in order by longitude from west to east, except Zone 2 is split into Mainland, Middle, and Island Side.
Marks added to the list since 2010 may be at the end of their Zones. "Missing" codes are spares.