



VIPER 640

2016

ASPEN INTERNATIONAL CHAMPIONSHIP

BERMUDA PRESENTED BY EFG



## Aspen Viper 640 International Championship Regatta Presented by EFG

November, 16-19 2016

Host Clubs - Royal Bermuda Yacht Club and Royal Hamilton Amateur Dinghy Club  
Hamilton, Bermuda

# SAILING INSTRUCTIONS

The Organizing Authority (OA) for the Aspen Viper 640 International Championship presented by EFG is the Bermuda Viper 640 Class Association.

## 1. RULES

- 1.1. The regatta will be governed by the rules as defined in The Racing Rules of Sailing (RRS) and the [Viper 640 Class Rules](#).
- 1.2. The Bermuda Sailing Association Prescriptions 2013- 2016 will apply. (See attachment C).
- 1.3. The Equipment Rules of Sailing will apply.
- 1.4. The Protest Committee may impose suitable penalties, other than disqualification, for violations of the Class Rules, or other non-Part 2 rules of The Racing Rules of Sailing. This changes RRS 64.1(a).
- 1.5. If there is a conflict between languages the English text will take precedence.

## 2. NOTICES TO COMPETITORS

- 2.1. Notices to competitors will be posted on the official notice board(s) online at <http://www.yachtscoring.com/emenu.cfm?eID=1577>, the event web site.

## 3. CHANGES TO SAILING INSTRUCTIONS

- 3.1. Any change to the sailing instructions will be posted before 0900 on the day it will take effect, except that any change to the schedule of races will be posted by 1700 on the day before it will take effect.

## 4. SIGNALS MADE ASHORE

- 4.1. Signals made ashore will be displayed at the main flag pole at the Royal Bermuda Yacht Club.
- 4.2. When flag AP is displayed ashore, '1 minute' is replaced with 'not less than 60 minutes' in the race signal AP.
- 4.3. Flag B (BRAVO) hoisted with one sound signal means 60 minutes before the end of the protest time limit. When lowered with one sound means "Protest time has ended". This changes RRS race signals.

## 5. SCHEDULE

### 5.1.

Day	Date	Event	Time
Sat	12 Nov	Early Competitor Check-In	1400-1700 (RBYC)
Tues	15 Nov	Competitor Check-In	1000-1600 (RBYC)
Wed	16 Nov	Competitor Briefing 1 <sup>st</sup> Warning Signal	0900 (RBYC) 1155 (Great Sound)
Thurs	17 Nov	1 <sup>st</sup> Warning Signal, Racing Resumes  <i>Prize Giving – Class Dinner</i>	1055 (Great Sound)  1830 (RBYC)
Fri	18 Nov	1 <sup>st</sup> Warning Signal, Racing Resumes	1055 (Great Sound)
Sat	19 Nov	1 <sup>st</sup> Warning Signal, Racing Resumes No Warning signals after	1055 (Great Sound) 1330

5.2. A maximum of 4 races on any day may be sailed, maximum of 14 races for the regatta.

5.3. To alert boats that a race will begin soon, the race committee will make a series of sound signals before a warning signal is made.

## 6. CLASS FLAG

6.1. The class flags will be white flag with a red viper logo.

## 7. RACE AREAS

7.1. Attachment A shows the location of racing areas.

## 8. THE COURSES

8.1. The course to be sailed will be windward-leeward.

8.2. Spreader/offset marks and leeward gates will be used, as shown in SI Attachment B.

8.3. No later than the warning signal, the race committee signal boat will broadcast and display the course, bearing and distance to mark 1. Failure to broadcast or to receive this notification shall not constitute grounds for granting redress. This changes RRS 60.1(b) and 62.1(a).

8.4. The information will be arranged vertically.

Example:

<b>5</b>	<i>Course</i>
<b>300</b>	<i>Approximate magnetic bearing to Mark 1</i>
<b>1.5</b>	<i>Approximate distance to Mark 1. (nautical miles)</i>

8.5. Courses:

<b>Course 4</b>	Start - 1 - 1a - Gate - 1 - 1a – Finish (Downwind)
-----------------	--

<b>Course 5</b>	Start - 1 - 1a - Gate - 1 - 1a - Gate – Finish (Upwind)
-----------------	---

- 8.6. Marks 1 and 1a shall be left to port. Mark 1a is an offset mark and will be positioned to port of mark 1.
- 8.7. If only one gate mark is set, boats shall leave the single mark to port.
- 8.8. Except when there is a change of course, the gate will be positioned to windward of the RC signal boat.
- 8.9. The gate may be laid after the starting signal.
- 8.10. Except for when there is a change of course:  
 (a) the downwind finish line for course 4 and 6 will be to leeward of the gate; and  
 (b) the upwind finish line for course 5 will be to windward of mark 1.

## 9. MARKS

- 9.1. Description of the Marks:

	<b>Original Marks</b>	<b>New Marks per SI 13</b>
Mark 1	Yellow Inflatable tetrahedron	Red Inflatable tetrahedron
Mark 1A	Yellow/green tomato	Yellow/green tomato
GATE (2P/2S)	Yellow Inflatable tetrahedron	Yellow Inflatable tetrahedron
Start	RC boats or RC boat and an inflatable mark	
Finish	RC boats or RC boat and an inflatable mark	RC boats or RC boat and an inflatable mark

- 9.2. A race committee boat signaling a change of a leg of the course is a mark as provided in sailing instruction 12.2.

## 10. AREAS THAT ARE OBSTRUCTIONS

- 10.1. The following areas are designated as obstructions: None.

## 11. THE START

- 11.1. The RC signal boat will display code flag L (LIMA) with one sound as it departs the harbour.
- 11.2. The starting line will be between the staffs displaying an orange flag on the starboard end signal boat and the port-end starting mark boat. In the event that the port-end mark boat is not on station, it will be replaced by an inflatable mark.
- 11.3. The RC will broadcast the bow/sail numbers of all boats observed to be OCS at the start twice; it will not alter the list based on a boat's actions after the start.
- 11.4. Failure of the RC to make a broadcast or to time it accurately will not be grounds for a request for redress. This changes RRS 60.1(b) and 62.1(a).
- 11.5. If the port end is a RC boat, individual and general recall flags may be displayed by the port end RC boat.
- 11.6. A boat starting later than 4 minutes after her starting signal will be scored Did Not Start (DNS) without a hearing. This changes RRS 35, A4 and A5.
- 11.7. After a general recall for a start that used starting penalty rule 30.2 (Z Flag Rule) the RC will broadcast the bow/sail #s that were observed to be ZFP.
- 11.8. After a general recall for a start that used starting penalty rule 30.3 (Black Flag Rule) the RC will broadcast the bow/sail #s that were observed to be BFD. This changes RRS 29.1

and 30.3

- 11.9. If the RRS 30.3 is in effect and a general recall is signalled, the Race Committee shall display a boat's bow/sail number if she broke RRS 30.3 before the next warning signal. This changes RRS 30.3.

## **12. CHANGE OF THE NEXT LEG OF THE COURSE**

- 12.1. To change the next leg of the course, the race committee will lay a new mark (or move the finishing line) and remove the original mark as soon as practicable. When in a subsequent change a new mark is replaced, it will be replaced by an original mark.
- 12.2. Except at a gate, boats shall pass between the race committee vessel signaling the change of the next leg and the nearby mark, leaving the mark to port and the race committee vessel to starboard. This changes RRS 28.

## **13. THE FINISH**

- 13.1. For downwind finishes, the finishing line will be between a staff displaying an orange flag on the race committee boat and either:
- (a) the course side of the nearby inflatable finishing mark, or
  - (b) a staff displaying an orange flag on the nearby race committee boat.
- The finishing line will be located to leeward of the leeward gate.
- 13.2. For windward finishes, the finishing line will be between a staff displaying an orange flag on the race committee boat and either:
- (a) the course side of the nearby inflatable finishing mark, or
  - (b) a staff displaying an orange flag on the nearby race committee boat.
- The finishing line will be located to windward of the windward mark.
- 13.3. If the RC intends to start another race on the same day, it will display the flag R (ROMEO) with no sound while boats are finishing.

## **14. PENALTY SYSTEM**

- 14.1. PENALTIES AT THE TIME OF THE INCIDENT:  
The first two sentences of rule 44.1 are changed to: 'A boat may take a One-Turn Penalty when she may have broken a rule of Part 2 or rule 31 while racing. However, when she may have broken a rule of Part 2 while in the zone around a mark other than a starting mark, her penalty shall be a Two-Turns Penalty.'
- 14.2. Unless the course is shortened to finish at the windward mark, penalties while in the zone of the windward mark or on the offset leg shall be delayed and taken as soon as possible on the downwind leg. This changes RRS 44.2
- 14.3. The protest committee boats may be positioned anywhere on the course area. Their position at any time shall not be grounds for granting redress. This changes RRS 60.1(b) and 62.1(a).
- 14.4. A boat that has taken a penalty under RRS 31 or 44.1 shall inform the race committee after the race by VHF radio or complete an acknowledgment form at the protest committee office within the protest time limit.

## **15. PROTESTS AND REQUESTS FOR REDRESS**

- 15.1. The target time for each race is 45-50 minutes. Failure to meet the target time will not be grounds for granting redress. This changes RRS 60.1(b) and 62.1(a).
- 15.2. Boats failing to finish within 20 after the first boat sails the course and finishes will be scored Did Not Finish without a hearing. This changes RRS 35, A4 and A5.

## **16. PROTESTS AND REQUESTS FOR REDRESS**

- 16.1. Protest forms are available at RBYC's terrace notice board. Protests and requests for redress or reopening shall be delivered there within the appropriate time limit.
- 16.2. The protest time limit is 60 minutes after flag B (BRAVO) is displayed ashore. This flag will be hoisted as soon as practical as the boats return to harbor. The same time limit applies to protests by the RC and protest committee about incidents they observe in the racing area and to requests for redress. This changes RRS 61.3 and 62.2.
- 16.3. Notices will be posted no later than 30 minutes after the protest time limit to inform competitors of hearings in which they are parties or named as witnesses. Hearings will be held in the protest room, located at RBYC, beginning at the time posted.
- 16.4. Notices of protests by the race committee, technical committee or protest committee will be posted to inform boats under RRS 61.1(b).
- 16.5. A list of boats that, under SI 14.3, have been penalized for breaking RRS 42 will be posted.
- 16.6. Breaches of SIs 18, 21, 23, 25 and 26 will not be grounds for a protest by a boat. This changes RRS 60.1(a).
- 16.7. On the last scheduled day of racing a request for redress based on a protest committee decision shall be delivered no later than 30 minutes after the decision was posted. This changes RRS 62.2.
- 16.8. Decisions of the international jury will be final as provided in rule 70.5.

## **17. SCORING**

- 17.1. Series scoring:
  - (a) When fewer than 6 races have been completed, a boat's series score will be the total of her race scores.
  - (b) When 6 or more races have been completed, a boat's series score will be the total of her race scores excluding her worst score.
- 17.2. One (1) race is required to be completed to constitute a series.

## **18. SAFETY REGULATIONS**

- 18.1. Prior to the first warning signal of her first race of each day, each boat is required to check in by passing astern of the race committee signal boat on starboard tack and hail her bow or sail number until acknowledged by the race committee.
- 18.2. Boats that retire from a race shall notify the RC as soon as possible.
- 18.3. Boats that leave the racing area between races shall notify the RC as soon as possible.
- 18.4. Boats not leaving the harbour for any of the day's racing shall so inform the RC.

## **19. REPLACEMENT OF CREW OR EQUIPMENT**

- 19.1. Substitution of competitors will not be allowed without prior written approval of the race committee. (See Class Rule 10.6)
- 19.2. Substitution of damaged or lost equipment will not be allowed unless authorized by the race committee. Requests for substitution shall be made to the committee at the first reasonable opportunity.

## **20. EQUIPMENT AND MEASUREMENT CHECKS**

- 20.1. A boat or equipment may be inspected at any time for compliance with the class rules and sailing instructions. On the water, a boat can be instructed by a race committee

equipment inspector or measurer to proceed immediately to a designated area for inspection.


- 20.2. In accordance with RRS G3, a boat chartered or loaned for this event may carry national letters or a sail number in contravention of the Class Rules.

**21. EVENT ADVERTISING**

- 21.1. Boats shall display event advertising supplied by the organizing authority. If this rule is broken, World Sailing Regulation 20.9.2 will apply.
- 21.2. Bow numbers and sponsor logos will be provided at competitor check-in.
- 21.3. Supplied bow numbers shall be displayed on both sides of the hull with the leading edge of the forward number no more than six inches aft of the bow and the top of the number approximately two inches below the sheerline.
- 21.4. Supplied Event Sponsor bow stickers will be displayed on both sides of the hull, immediately aft of the bow number with the Aspen logo closest to the bow numbers.
- 21.5. As requested by the OA supplied sail logo (Aspen) may be displayed on both sides of the primary mainsail used by each boat during the regatta.

**22. OFFICIAL BOATS**

- 22.1. Official boats will be marked as follows:

RC boats	
Jury boats	White Flag with Black 'J'
Press/Safety boats	Numbered Pink Flag

**23. SUPPORT BOATS**

- 23.1. Team leaders, coaches and other support persons shall stay outside areas where boats are racing from the time of the preparatory signal until all boats have finished or retired or the race committee signals a postponement, general recall or abandonment.

**24. TRASH DISPOSAL**

- 24.1. Trash may be placed aboard support or official boats.

**25. LAUNCH AND HAUL-OUT RESTRICTION**

- 25.1. All boats are to be launched prior to the first warning signal of the regatta and shall not be hauled out without prior permission of the Viper 640 Technical Committee or PRO.

**26. RADIO COMMUNICATIONS**

- 26.1. Except in an emergency, a boat shall neither make radio transmissions while racing nor receive radio communications not available to all boats. This restriction also applies to mobile telephones.
- 26.2. The race committee will endeavor to hail each yacht that is OCS on VHF radio. The timing of such hail, the sequence of the hails, or the failure to make, or for the competitor to hear, such an announcement shall not be grounds for granting redress.

This changes RRS 62.1(a).

26.3. The RC will use VHF radio, Channel 74 to communicate with the fleet.

26.4. It is strongly encouraged that all boats have a VHF radio.

## **27. PRIZES**

27.1. Prizes will be given as per NoR 15.

27.2. Additional Prizes may be given at the discretion of the Organizing Authority.

## **28. RIGHT TO USE NAME AND LIKENESS**

28.1. By participating in the Aspen Viper 640 International Championship presented by EFG, a competitor automatically grants to the organizers and its sponsors the right in perpetuity to make, use and show, from time to time at their discretion, any motion pictures and live, taped or filmed television and other reproductions of him or her during the period of the competition without compensation.

## **29. DISCLAIMER OF LIABILITY**

29.1. Competitors participate in the regatta entirely at their own risk. See Rule 4, Decision to Race. The OA and the Host Clubs will not accept liability for material damage or personal injury or death sustained in conjunction with or prior to, during, or after the regatta. Each person racing on board a boat entered in the regatta shall sign a waiver for loss, damage or injury to their person or property in conjunction with the regatta or while on the premises of the Host Clubs. The Host Clubs, the Viper 640 Class Association, the Bermuda Viper 640 Class Association, and their member volunteers, employees, officers and agents shall not be responsible for any loss, damage or injury that may occur to persons (s) or property whether ashore or at sea as a consequence of the participation of any boat.

## **30. INSURANCE**

30.1. Each participating boat shall be insured with valid third-party liability insurance with a minimum cover of US\$500,000 per incident or the equivalent.

## **31. EVENT OFFICIALS**

### **Event Chairman:**

- Somers Kempe  
Phone: 441-704-0102  
E-mail: [somers@mahoganyreef.com](mailto:somers@mahoganyreef.com)

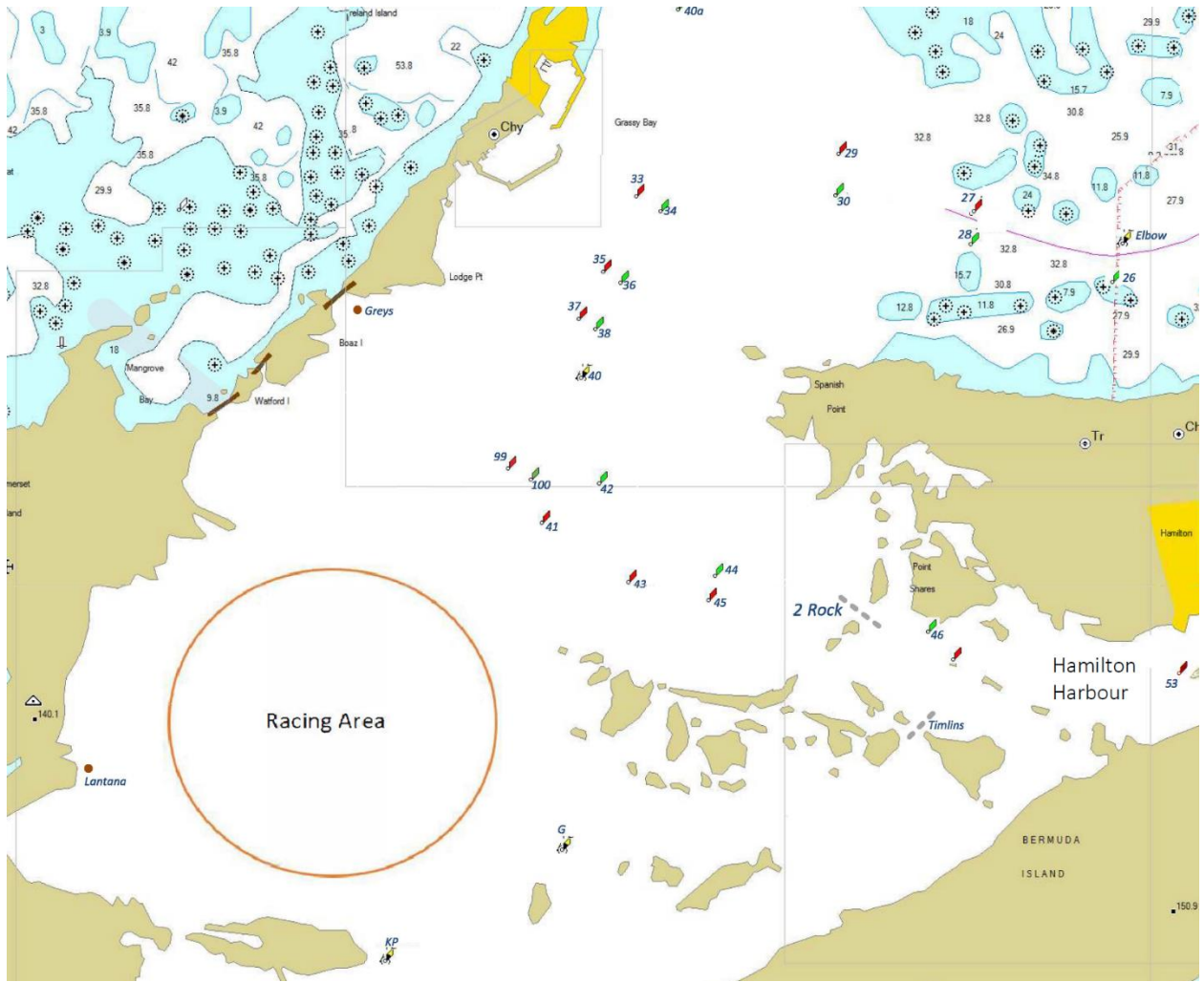
### **Protest Committee Chairman:**

- Robert Duffy (IJ-BER)

### **Race Committee Chairman:**

- Hank Stuart (IRO-USA)  
Phone: 585-414-6105  
E-mail: [hstuart8m@gmail.com](mailto:hstuart8m@gmail.com)

# Attachment A – The Racing Area



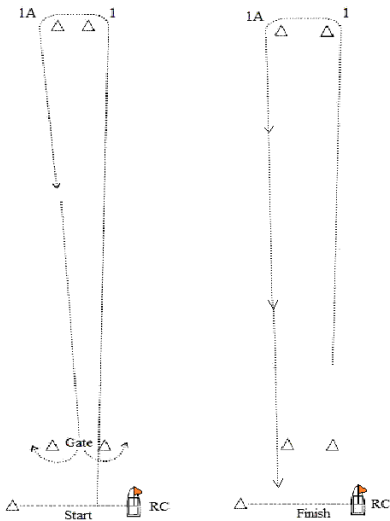
*Not to be used for navigation*



## Attachment B – The Courses

Illustrations of Course 4 and Course 5 for example:

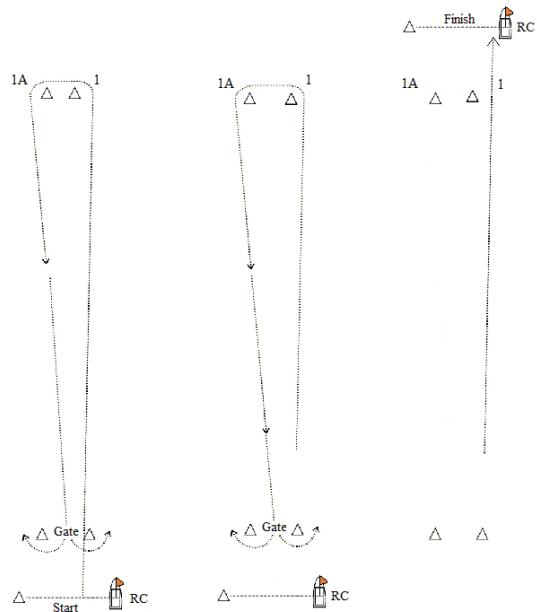
### Course 4



Start – 1 – 1A – Gate(4S/4P) – 1 – 1A – Finish

Start/Finish may be between either:  
 RC boat displaying an orange flag and a nearby inflatable mark  
 or  
 between two RC boats each displaying an orange flag.

### COURSE 5



Start – 1 – 1A – Gate(4S/4P) – 1 – 1A – Gate(4S/4P) - Finish

Start/Finish may be between either:  
 RC boat displaying an orange flag and a nearby inflatable mark  
 or  
 between two RC boats each displaying an orange flag.

## Attachment C – The Bermuda Sailing Association Prescriptions 2013-2016

*With effect from 15th April, 2015, the Bermuda Sailing Association (BSA) prescribes the following with reference to the Racing Rules of Sailing, 2013-2016:*

PART 1 Rule 5 After rule 5 add:

The national authority procedural rules required by ISAF regulation 21.14 to implement the World Anti-Doping Code through ISAF Regulation 21 are the Bermuda Sport Anti-Doping Authority, the National Anti-Doping Organization procedures.

Rule 67 After rule 67 add: 1. Any issue of liability or claim for damages arising from an incident while a boat is bound by The Racing Rules of Sailing shall be subject to the jurisdiction of the courts and not considered by a protest committee. 2. A boat that takes a penalty or retires does not thereby admit liability for damages or that she has broken a rule.

PART 7 Rule 86.3 After rule 86.3 add: Rule Changes An organizing authority wishing to develop and test a rule change may do so for local events involving local competitors only. For all other events prior approval from the BSA shall be obtained. The organizing authority shall ensure that the proposed rules are included in the notice of race and sailing instructions and shall promptly report the results of the test to the BSA.

Rule 88.2 After rule 88.2 add Notices of race and sailing instructions shall not change a prescription of the BSA. However, when an international jury has been appointed for an event, only the prescriptions to rules 5, 67, 86.3 and 88.2 shall apply.

### Attachment D

#### **POST-RACE PENALTIES**

##### **D1 PENALTIES TAKEN AFTER A RACE**

**D1.1** After a race, a boat that may have broken a rule of Part 2 or rule 31 while *racing* may take a Post-Race Penalty for that incident. The penalty shall be a Scoring Penalty, calculated as stated in rule 44.3(c). However, rules 44.1(a) and (b) apply. A boat takes a Post-Race Penalty by informing the race committee in writing and identifying the race number and when and where the incident occurred.

**D1.2** The Post-Race Penalty shall be

- (a) 20%, if taken before the protest time limit, or
- (b) 30%, if taken after the protest time limit but before the beginning of a hearing involving the incident.

#### **ARBITRATION**

*(A boat may take the applicable Post-Race Penalty in D1 without participating in an arbitration meeting.)*

##### **D2 PROTEST ARBITRATION**

**D2.1** An arbitration meeting will be held prior to a protest hearing for each incident resulting in a *protest* by a boat involving a rule of Part 2 or rule 31, but only if each *party* is represented by a person who was on board at the time of the incident. No witnesses will be permitted. However, if the arbitrator decides that rule 44.1(b) may apply or that arbitration is not appropriate, the meeting will not be held, and if a meeting is in progress, it will be closed.

**D2.2** Based on the evidence given by the representatives, the arbitrator will offer an opinion as to what the protest committee is likely to decide:

- (a) the *protest* is invalid,
- (b) no boat will be penalized for breaking a rule, or
- (c) one or more boats will be penalized for breaking a rule, identifying the boats and the penalties.

**D2.3** A boat that may have broken a rule may take a Post-Race Penalty as provided in D1. However, the penalty in rule D1.2(a) is available only until the protest time limit or until the beginning of the arbitration meeting, whichever is earlier. During a meeting, a boat may take a penalty by acknowledging her acceptance of the penalty in writing.

**D2.4** If a boat asks to withdraw her *protest*, the arbitrator may act on behalf of the protest committee in accordance with rule 63.1 to accept the withdrawal.