

# Wednesday Night Race Series - 2023

Organizing Authority (OA) – Liberty Yacht Club

## Sailing Instructions

### 1. RULES

- 1.1 The race series will be governed by the rules as defined in the current edition of the *Racing Rules of Sailing*, including the US Sailing Prescriptions; the current PHRF regulations, as administered by the PHRF-MA and any class rules for any one-design classes.
- 1.2 Should there be a conflict between the sailing instructions and the Notice of Race (NOR), the Sailing Instructions will take precedence. This changes RRS rule 63.7.
- 1.3 One design classes shall race under PHRF rules.
- 1.4 Weight and crew limits pertaining to PHRF certificates will be waived for the series.
- 1.5 Individuals participating through other clubs may be subject to additional rules; if there is a conflict, the WNR Sailing Instructions herein shall take precedence.

### 2. NOTICES TO COMPETITORS

- 2.1. Notices to competitors will be posted on the event website: [www.YachtScoring.com](http://www.YachtScoring.com)
- 2.2. Notices regarding race cancellations or postponements due to weather, will be made via Yacht Scoring to all registered participants. If Yacht Scoring is unavailable, another blast communication method will be used. It is the intent of the RC to announce *Racing, No Racing, Delayed Racing later, or Racing TBD on water*, by 1640 on the day of racing.

### 3. CHANGES TO SAILING INSTRUCTIONS

- 3.1. Any change to the sailing instructions will be posted on the event website on the day before it will take effect.
- 3.2. The Race Committee (RC) may make changes to these sailing instructions verbally on the water via VHF Ch 63, at its sole discretion.

### 4. SIGNALS MADE ASHORE

- 4.1. It is the Race Committee's intent not to display flag signals on shore.
- 4.2. All on shore signals will be via electronic means. (see 2)

### 5. SCHEDULE OF EVENTS

- 5.1 Skipper's meeting 4/19/23 1900hrs. Location: Zoom (or similar) meeting

Series 1 - **4/26, 5/3**, 5/10, 5/17, 5/24, 5/31, 6/7

*(The first two races of series 1 will be tune-up races and will not count towards overall series or season score)*

Series 2 – 6/14, 6/21, 6/28, 7/5, 7/12, 7/19, 7/26

Series 3 – 8/2, 8/9, 8/16, 8/23, 8/30, 9/6, 9/13

*\* Tune-up races do not count towards overall nor series scoring.*

- 5.2 The warning signal for the first start will be made at 1810.
- 5.3 If time permits, there may be more than one race in a night, but no race shall start later than 8:00pm. Code Flag 'A' displayed either at or soon after the finish indicates that there will be no further racing that day.

## 6. CLASSES

- 6.1 Boats will be placed in classes (designated by roman numerals (I, II, III, etc.) at the discretion of the Race Committee. A listing of entrants by class will be available online on [www.yachtscoring.com](http://www.yachtscoring.com).
- 6.2 Depending on the composition of entries, it is the intent of the organizing authority to have the fleet divided into 4 classes and as follows: Spinnaker A, Spinnaker B, Non-spinnaker, and One-Design.
- 6.3 If there are 4 or more Yachts of the same design, they may be offered their own class.
- 6.4 It will be the discretion of the RC on the day of racing to decide if they have their own start and order.

## 7. RACING AREA

- 7.1 Races will be held in Upper Hudson Bay. Appendix 1 shows the approximate location of the starting area.
- 7.2 The Upper Hudson Bay is a commercial and recreational area; there will be ferries, barges, tugboats and other commercial and recreational vessels transiting the area.
- 7.3 The RC will be located on a boat near the entrance to Morris Canal, and will announce their position over VHF channel 63 approximately 10 min prior to the first warning signal.

## 8. THE COURSES

- 8.1 The course to be sailed for all classes will be posted on a course board located on the RC signal boat at the starting line no later than the first class's warning signal.
- 8.3 The courses will use government marks. *All marks shall be rounded to port unless marked by a "/S".*
- 8.4 The Race Committee will post on the RC Signal boat at the starting line the sequence of marks to be sailed. The government mark designations are listed in SI Appendix 1. NOTE: Classes are listed along the top of the board, marks along the left side.
- 8.5 In the event the RC wishes to set a course that uses marks NOT on the chartlet in Appendix 1, then RC shall write on the course board the government mark to be rounded and make an announcement over the VHF radio prior to the start of the race..

**COURSE BOARD EXAMPLE**

		Class #			
↓ MARK/CLASS →	I	II	III	IV	
1	E	C	C	E	
2	C	B/S	FIN	C	
3	D	FIN		D	
4	FIN			FIN	

Diagram annotations: A box labeled "Class #" has a red arrow pointing to the "III" column header. A box labeled "Mark #" has a red arrow pointing to the "2" row header.

## 9. MARKS

- 9.1 The starting and finishing Mark will be an orange inflatable buoy near the RC boat. If an alternate mark is used, RC will announce this change on the water.
- 9.2 At the discretion of the RC,
  - a) an alternate start ~~finish~~ mark shall be the point marked S' ~~F'~~ located on the pilings at southeastern-most point of the Central Railroad of NJ Terminal peninsula and its sunken barge extending 1000' at 90 degrees..
  - b) an alternate finish mark shall be the point marked F' located at the north-eastern point of liberty state park; an orange flag MAY be present (See Image after course sheet).
- 9.3 Course Marks shall be government marks. Approximate locations of all Marks are shown on the *Course Sheet* at the end of these Instructions.

## 10. THE START

- 10.1 The starting sequence will be signaled in accordance with RRS 26.
- 10.2 A boat starting later than 5 minutes after her starting signal may be scored a DNS. This changes RRS A4 and A5.
- 10.3 It is the RC's intent to roll starts. (The warning signal for the second or subsequent classes will be the starting signal of the previous class).
- 10.4 The starting line will be between a staff displaying an orange flag by the race committee and the course side of the starting mark.
- 10.5 The Starting Area shall comprise all water within 100 yards of the Starting Line. Boats whose Preparatory Signal has not been made shall keep clear of the Starting Area and of all boats whose Preparatory Signal has been made.
- 10.6 Without infringing upon the foregoing rule, each boat should, prior to the Warning Signal of her class, sail by the Signal Boat and give a verbal check-in so that she will be assured of being recorded as a starter. **There is to be no check-in via radio.** The Race Committee will not acknowledge boats attempting to do so.
- 10.7 Classes may have a combined start if the Race Committee chooses, in order to maximize time racing.

## 11. RECALLS

- 11.1 The race committee may courtesy hail boats identified as on the course side at the start by sail number or boat name on VHF CH 63. Any actions of the RC with respect to such courtesy hails is not a basis for redress. This changes RRS 62.1(a).

## 12. CHANGE OF THE NEXT LEG OF THE COURSE

- 12.1 A race may be shortened at any mark of the course by an RC boat flying code flag "S". In such a case, the finish line will be between the course mark and the "S" flag.

Shortened Course



## 13. THE FINISH

- 13.1 The finishing line will be between a staff displaying a blue flag by the RC boat and the course side of the finishing mark. (Notes: the same inflatable mark shall be used for both starting and finishing unless announced by RC on the water. If unavailable, the orange colored start flag may be used.)
- 13.2 In the event that the finishing mark position cannot be maintained, the finish line shall be between the RC boat and the point marked F' described in Section 9.2.
- 13.3 If the RC boat is not on station, the finish shall be the line from the point marked F' extending to the Morris Canal #1 Buoy labeled "A." 1000' feet on a 90 degree bearing.

## 14. PENALTY SYSTEM

- 14.1 Rule 44.1 is changed so that the Two-Turns Penalty is replaced by the One-Turn Penalty unless the incident occurs in the Zone in which case the Two-Turn Penalty applies.

## 15. TIME LIMITS

- 15.1 Time limit for each race will be two (2) hours for all Classes, or shorter if 15.2 applies.

- 15.2 Boats failing to finish within 30 minutes after the first boat sails the course in accordance with RRS 28, and finishes may be scored DNF without a hearing. This rule changes RRS 35, 63.1, A4 and A5.

## 16. PROTESTS AND REQUESTS FOR REDRESS

***PROTESTS ARE STRONGLY DISCOURAGED in this race series. However if you feel you absolutely must place a protest please follow the protocols set forth below:***

- 16.1 Intention to protest for a rule of Part 2 and the boat being protested shall be as follows:
- A. A boat intending to protest shall inform the other boat at the first reasonable opportunity. When her *protest* will concern an incident in the racing area that she was involved in or saw, she shall hail “protest” and conspicuously display a red flag at the first reasonable opportunity for each. She shall display the flag until she is no longer *racing, and*
  - B. Signal the Race Committee on the VHF Channel 63 at the finish of a race, until acknowledged by the Race Committee. This modifies rule 61.1(a).
  - C. Boats that have completed penalty turns to exonerate a protest Signal the Race Committee on the VHF Channel 63 at the finish of a race, until acknowledged by the Race Committee.
- 16.2 Arbitration will be held in accordance with Appendix T with the following additions:
- A. Add to Appendix T2 - Arbitration meeting may be held via teleconference at mutually agreed upon date/time.
- 16.3 One representative from each boat will meet with an arbitrator unless the protestor requests that the protest be withdrawn.
- 16.4 The arbitrator will not be a member of the protest committee that hears the protest but will be permitted to observe the testimony given and offer testimony.
- 16.5 Boats may not protest other boats for breaches of: retirement from race notification or safety equipment. The penalty for breaking these rules is at the discretion of the Protest Committee and may be less than disqualification. This changes rule 60.1(a).

## 17. SCORING

- 17.1 The scoring system will be the Low Point System of Appendix “A” of RRS and each boat’s regatta score will be the total of that boat’s scores in all the races.
- 17.2 Each Class will be scored separately. In order to be eligible for a series or season prize, a Yacht must have come to the starting area for at least 75% of the completed races listed in the series or the season. Furthermore, to be eligible for a season prize, a Yacht must participate in all series of the season.
- 17.3 There will be one-throw out race for every 7 races in a series a yacht is scored.
- 17.4 The series score for each boat will be the sum of her race scores (excluding throw-outs, if any) The qualified yacht with the lowest series score is the winner, and others will be ranked accordingly. The season score shall be the sum of all the series scores.
- 17.5 All Yachts not in a one-design class will be scored using their current PHRF handicaps provided by the PHRF-MA and based on a time on time format. Club-owned yachts which are identical in equipment and do not maintain crew from year to year may share PHRF certificates.
- 17.6 One race will constitute a series.
- 17.7 Rule A5.3 shall apply. A boat that came to the starting area but did not *start*, did not *sail the course*, did not *finish*, retired or was disqualified shall be scored points for the finishing place one more than the number of boats that came to the starting area. A boat that did not come to the starting area shall be given a DNC and scored points for the finishing place one more than the number of boats entered in the series.
- 17.8 In order to participate and be scored for any part of a series, a boat must come to the starting area at least once during that series.

- 17.9 Scores that are based on the number of boats, e.g., RRS-A5.2 and A5.3 pertaining to DNS and DNC, shall be finalized at the end of the series using the number of boats participating at that time.
- 17.10 Scoring in place. Should it be necessary to Abandon or Shorten the race, the RC may choose to 'score in place'. For scoring purposes, full course times will be extrapolated from each boat's average speed for their portion of the course completed in their current location at the time the RC finishes them. Note: Section 15 Time limits apply to the full course time.
- 17.11 If RC is not on station when a boat completes the course, the boat shall record their own time as they pass the alternate finish. (See 13.3) The finish time shall be reported to the RC as soon as practical.
- 17.12 All boats shall provide one regular crew member for one race to serve on RC. It is the responsibility of the skipper to provide the RC their designated volunteer along with their contact information at least one week prior to the race. A boat failing to comply with this rule will receive a DNS for the next race.

## 18. SAFETY REGULATIONS

- 18.1 USCG approved personal flotation devices (PFD) for all crew members shall be on board at all times.
- 18.2 Any boat withdrawing before the start or retiring from a race shall notify the race committee via VHF as soon as possible, then wait for RC acknowledgment.
- 18.3 Security Zones – The USCG has established a 150-yard security zone around Ellis and Liberty Islands as shown in the Attached Course Sheet. Additionally there is a 100-yard security zone around all US Naval or Coast Guard vessels. These security zones are considered *obstructions* on the racecourse and no boat is allowed to sail inside the security zones. If on station, Security Zones are marked with white buoys with orange bands and diamonds. If present, these markers define the security zone. Any boat observed by RC to enter Security Zones may receive a DSQ.
- 18.4 Safety Zone: All boats must avoid any potential impact with RC boats. The RC may place an anchor line float or marker within approximately 15 yards in front of the RC. Any boat entering this area may be scored ZPF and computed penalty per the procedure described in 44.3c.
- 18.5 Any contact with the Race Committee boat or mark boat is an automatic DSQ and potentially withdrawn from the series at RC's discretion.
- 18.6 A boat that damages or drags a mark may be scored a DSQ by the Race Committee
- 18.7 Weather Protocols – In accordance with the USCG Marine Event Permit, there may be no racing if the wind gusts to speeds greater than 25 knots, there is lightning, thunderstorms or visibility is less than 1 nautical mile. A race may be postponed or abandoned if any of these conditions exist. If a race is abandoned while on the water for weather, teams will be notified via VHF Ch 63 and may be directed to proceed to the berthing areas. If a race is postponed or abandoned for weather prior to heading out to the race area, teams will be notified via Yacht Scoring as described in 2.2.
- 18.8 Boats interacting in NY Harbor with vessels not racing are cautioned to observe the [USCG Commandant Instruction M16668.2D, Navigation Rules](#) and to yield right of way to vessels restricted in their ability to maneuver, especially to tugs, ferries, and barges. Any boat observed to impede such traffic will receive a DSQ.

## 19. EQUIPMENT

- 19.1 Yachts shall observe the recommendations of the ISAF 2018 Safety Equipment Requirements (SER) for racing "Near Shore".
- 19.2 Substitution or repair of damaged or lost equipment must comply with or conform to the class rules for those yachts racing in one-design classes.

## 20. ADVERTISING

- 20.1 Pursuant to CR 2.8 and ISAF Regulation 20, ISAF Advertising Code, including ISAF Regulation 20.5.6(a), advertising shall be permitted on boats so long as it does not interfere with the performance of the boat or crew, is in good taste, and is not of an overtly sexual nature.

## 21. HAUL-OUT RESTRICTIONS

- 21.1 There are no haul-out restrictions.

## 22. RADIO COMMUNICATION

- 22.1 Each boat shall carry a radio capable of transmitting and receiving on VHF channels 9, 13, 16, 63, 68, 72, 78A. Except in an emergency, a boat shall neither make radio transmissions while racing nor receive radio communications not available to all boats. This restriction also applies to all modes of communication on mobile telephones, tablets, etc.
- 22.2 Courtesy broadcasts to the fleet will be on VHF channel 63 however the courtesy broadcast channel may be changed on the water. Multiple courtesy broadcasts on VHF channel 63 stating the change to the new channel will be made prior to the change and all references to channel 63 herein shall subsequently refer to the new channel.
- 22.3 Assistance from Race Committee - The Race Committee may respond to any questions from sailors even after the race has started and any such answers from the race committee will not be considered outside assistance. Any RC answers are not by any means grounds for protest or redress.
- 22.4 Boats shall not hail Race Committee during any starting sequence.

## 23. PRIZES

- 23.1 A 1<sup>st</sup> place prize will be awarded to the top boat for each Class.
- 23.2 Prizes will be awarded after the end of each series. Season Prize will be awarded after the end of the last series.

## 24. DISCLAIMER OF LIABILITY

- 24.1 Competitors participate in the regatta entirely at their own risk. See rule 3, of the RRS Decision to Race. The organizing authority will not accept any liability for material damage or personal injury or death sustained in conjunction with or prior to, during, or after the regatta.
- 24.2 By registering for this event, the person-in-charge of each boat agrees to be bound with all rules that govern this event, they will inform all crewmembers of the conditions stated herein for their participation and with the following:
- A) My crew and I recognize that sailing is an activity that has an inherent risk of damage and injury, sickness and disease (including communicable diseases such as COVID-19) associated with it. We have read rule 3, Decision to Race, and hereby acknowledge and agree that we are participating in this event entirely at our own risk.
- B) I acknowledge and agree that neither the organizing authority, host club nor the race committee, nor their members will be responsible for: a) any damage to the entered boat or my other property, or b) any injury, sickness or disease (including communicable diseases such as COVID-19) to my crew or me, including death, sustained as a result of our participation in this event.
- C) I hereby waive all claims, which I, or any heir, representative, successor or assignee, may have against Liberty Yacht Club and its officers, trustees, members, committees, employees or agents, sponsors or any other organization or official, arising out of or in any way connected with participation in such race or activity with respect to personal injury, sickness or disease (including communicable diseases such as COVID-19) or property damage suffered by my crew or me as a result of our participation in this event, whether on the water or on shore, and hereby release the race organizers from any liability for such injury, sickness or disease (including communicable diseases such as COVID-19) or damage to the fullest extent permitted by law.
- D) I have taken all necessary steps to ensure that my crew and I and my entered boat are adequately prepared for all possible contingencies, including carrying and using appropriate safety equipment as may be required by law, racing rules and that a prudent seaman would consider advisable. I agree to be bound by all rules that govern this event. I will inform all crewmembers of the conditions stated herein for their participation in such racing.

## **25. DAMAGE TO EQUIPMENT**

- 25.1 Entry fees do not cover any damage by competitors to RC and club equipment. If damage to any equipment, including volunteer boats, is caused by a competitor, the competitor and boat owner will repair, replace, or pay the replacement cost in a timely manner. This requirement also includes damage to marks, lines, and other equipment. Competitors who cause damage must seek RC permission to continue in the season.

## **26. COVID-19 PROTOCOLS**

- 26.1 Skippers and crews shall comply with NJ State, Local and Liberty Landing Marina's Covid-19 Protocols as required. A breach of this rule shall not be grounds for protest by a boat. This changes RRS 60.1(a). 10.2 Please be advised that due to the current COVID-19 situation, there may be increased protocols in place and potentially limited amenities available at LYC and Liberty Landing Marina.

**SEE ATTACHED COURSE CHART**

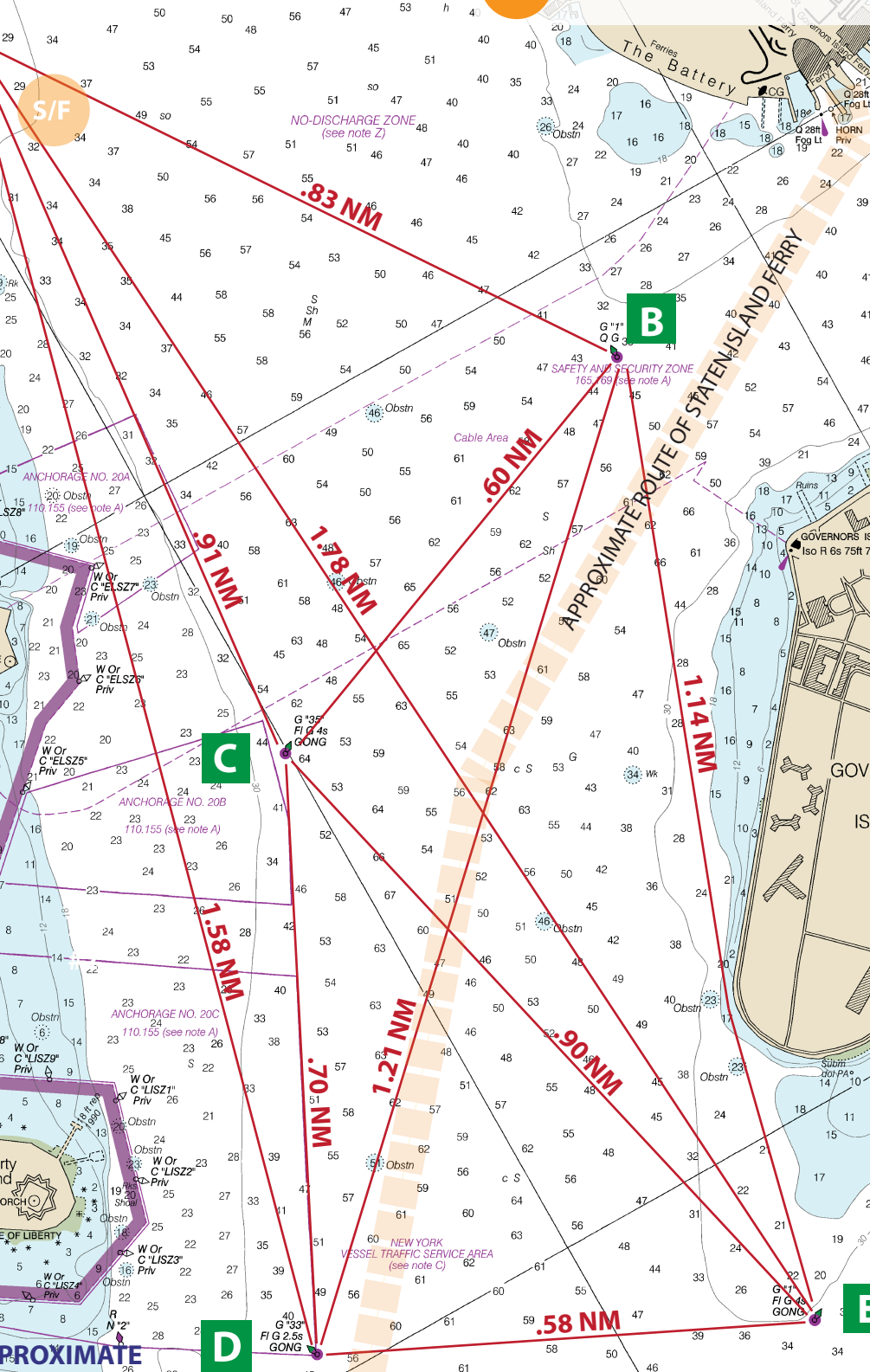
# LIBERTY YACHT CLUB

## WEDNESDAY NIGHT RACE SERIES

### COURSE MARK SHEET

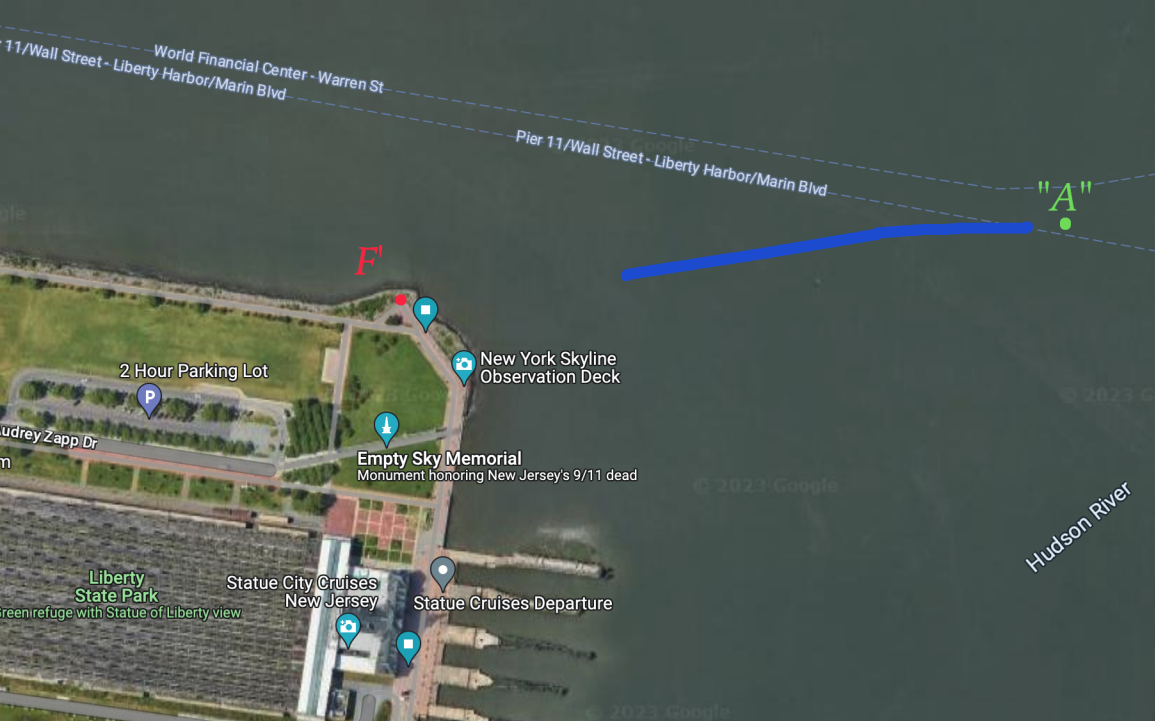
- A** GC "1" (Morris Canal)
- B** G "1" QG (North Governors)
- C** G "35" FI G 4s GONG
- D** G "33" FI G 2.5s GONG
- E** G "1" FI G 4S GONG (South Gov.)
- S/F** START/FINISH (Approximate)

**NOTE: DISTANCE FROM 'A' TO START/FINISH = .13 NM**



**NOTE: DISTANCES ARE APPROXIMATE**





World Financial Center - Warren St  
11/Wall Street - Liberty Harbor/Marin Blvd

Pier 11/Wall Street - Liberty Harbor/Marin Blvd

"A"

F'

2 Hour Parking Lot

New York Skyline  
Observation Deck

Audrey Zapp Dr

Empty Sky Memorial  
Monument honoring New Jersey's 9/11 dead

Liberty  
State Park  
Green refuge with Statue of Liberty view

Statue City Cruises  
New Jersey

Statue Cruises Departure

Hudson River