

2023 Annapolis Labor Day Regatta
Saturday, 2 September 2023
CBYRA Sanction #331
Annapolis, MD

Organizing Authority: Eastport Yacht Club
supported by Annapolis Yacht Club
eastportyc.org/aldr



SAILING INSTRUCTIONS

The notation '[NP]' in a rule means that a boat may not protest another boat for breaking that rule. This changes RRS 60.1(a).

1 RULES

- 1.1 The regatta will be governed by the rules as defined in The Racing Rules of Sailing (RRS).
- 1.2 For the ORC and PHRF classes only: the “Nearshore” category of the [US Sailing Safety Equipment Requirements](#) will apply.

2 COMMUNICATIONS WITH COMPETITORS

- 2.1 The EYC race office can be reached at (410) 271-7193, or via email at race.committee@eastportyc.org.
- 2.2 On the water, RC intends to monitor and communicate with competitors via VHF radio on channel 73 for the DIVISION 1 classes, and channel 72 for the DIVISION 2 classes. This includes courtesy announcements and confirmation of RC signals before, during, and after racing.

3 CHANGES TO SAILING INSTRUCTIONS

Any change to the SIs will be posted no later than two (2) hours before the first scheduled warning signal on the day it will take effect, except that any change to the schedule of races will be posted by 2000 on the day before it will take effect.

4 SIGNALS MADE ASHORE

No signals will be made ashore. Notices will be posted on the official notice board.

5 CLASS FLAGS

- 5.1 Classes that have a class flag identified in the CBYRA Green Book shall fly the specified flag.
- 5.2 ORC class flag assignments are as follows:

<u>ORC Open 1</u>	<u>ORC Open 2</u>	<u>ORC Racer/Cruiser</u>	<u>ORC Cruiser</u>
#3 pennant	#8 pennant	“white” flag	“green” flag
- 5.3 Except for the Viper 640 class, all classes shall clearly display their class flag from the backstay at least six (6) feet above the deck.

6 RACING AREA

- 6.1 The racing area will be on the Severn River and Chesapeake Bay off the mouth of the Severn River as shown in Figure 1.
- 6.2 Approximately sixty (60) minutes prior to the first scheduled warning signal, the RC intends to announce on VHF radio the approximate location of the starting area.
- 6.3 Approximately thirty (30) minutes prior to the first scheduled warning signal, the RC intends to announce on VHF radio the approximate GPS location of the RC signal vessel.

7 THE COURSES

- 7.1 Drop Mark Courses
 - 7.1.1 Drop mark courses are shown in Figure 2.
 - 7.1.2 Prior to the warning signal, the approximate magnetic heading and approximate distance to the first mark shall be designated by the RC signal vessel.
 - 7.1.3 When the first mark of the course is to be a change mark, code flag “C” will be displayed by the RC Signal Vessel before the warning signal, accompanied by a series of repetitive sound signals.
 - 7.1.4 If only one gate mark is set, boats shall round the single mark to port.
- 7.2 Government Marks Course
 - 7.2.1 The government marks course will use CBYRA Region 3 marks, shown in Figure 3.
 - 7.2.2 For the government marks race, RC will announce on VHF radio the course to be sailed. This will include the rounding marks and the rounding side.

8 MARKS

8.1 For the DIVISION 1 classes:

- (a) The starting mark will be a green tetrahedron.
- (b) Mark 1 will be a 5' orange cylinder.
- (c) Mark 1 Change will be a yellow tetrahedron.
- (d) Mark 1a will be a 3' red cylinder.
- (e) Marks 2p/2s will be 5' orange cylinders.
- (f) The finish mark will be a pink tetrahedron.

8.2 For the DIVISION 2 drop mark classes:

- (a) The starting and finishing marks will be green cylinders or green MarkSetBots.
- (b) Marks 1 will be an orange cylinder.
- (c) Mark 1a will be a green cylinder.
- (d) Marks 2s/2p will be orange cylinders or orange MarkSetBots.
- (e) Change marks used in accordance with SI 11 will be orange cylinders with a dark-colored band.

8.3 For the DIVISION 2 government marks classes:

- (a) The rounding marks will use CBYRA Region 3 Standard Race Marks as described Figure 3.
- (b) Government marks "1AH" (off Tolly Point), R"4" (off Greenbury Point), Thomas Point Light and the Bloody Point Warning Light (LLNR 7751) shall be passed on the channel side at all times.

8.4 A RC starting or finishing vessel may set a stand-off buoy. When present, this stand-off buoy, the line attaching it to the RC vessel, and the RC vessel are all part of the starting or finishing mark.

9 THE START

9.1 The assignment of classes to a racing division, the start order for the first race, and warning pennant for each class will be posted to the official notice board before 2000 on Friday, 1 September 2023.

9.2 The starting line will be between the staff or halyard displaying an orange flag on the RC signal vessel at the starboard end, and either the course side of the starting mark or the staff or halyard displaying an orange flag on the RC vessel at the port end.

9.3 [DP] Boats whose warning signal has not been made shall avoid the starting area during the starting sequence for other classes.

9.4 A boat that does not start within ten (10) minutes after her starting signal will be scored Did Not Start (DNS) without a hearing. This changes RRS A4 and A5.

10 RECALLS

The RC will announce on VHF radio the boats identified as OCS, UFD, or BFD. A boat may not base a request for redress on the failure to hear or receive the announcements, the timeliness of announcement or the order in which boats are announced. This changes RRS 62.1(a).

11 CHANGE OF THE NEXT LEG OF THE COURSE

11.1 To change the next leg of the course, the RC will lay a new mark (or move the finishing line) and remove the original mark as soon as practicable. When in a subsequent change a new mark is replaced, it will be replaced by an original mark.

11.2 After a start, if flag C is flown over flag Q, then the course change applies only to boats beginning their final leg to the finish. This changes RRS 33 and Race Signals C.

12 THE FINISH

The finishing line will be between a staff or halyard displaying a blue flag on the RC finishing vessel and the course side of the finishing mark.

13 PENALTY SYSTEM

13.1 Penalties while racing: RRS 44.1, One-Turn and Two-Turns Penalties will apply.

13.2 Penalties after racing: RRS/US Appendix V2, Post Race Penalties, will apply.

14 TIME LIMITS

14.1 The Mark 1 Time Limits, Race Time Limits, and Finishing Windows are (in minutes):

Class, Race	Mark 1 Time Limit	Race Time Limit	Finishing Window
All other classes	30	90	15
J/105 & J/35 drop mark races	30	120	15
ORC Open, drop mark races	30	120	None
ORC Racer/Cruiser & ORC Cruiser, government mark race	None	240	None

- 14.2 If no boat has passed the first mark within the Mark 1 Time Limit, the race will be abandoned.
- 14.3 The Race Time Limit is the time limit for the first boat in each class to sail the course and finish. If no boat finishes within the Race Time Limit, the race will be abandoned.
- 14.4 The Finishing Window is the time for boats in a class to finish after the first boat in that class sails the course and finishes. Boats failing to finish within the Finishing Window, and not subsequently retiring, being penalized, or given redress, will be scored Time Limit Expired (TLE) without a hearing. This changes RRS 35, A4, A5, and A10.

15 PROTESTS, REQUESTS FOR REDRESS, SCORING INQUIRIES

- 15.1 Scoring Inquiries shall be submitted within the protest time limit. Scoring inquiries shall be submitted via the “Online Scoring Inquiry Filing” link found on the Yacht Scoring event main page.
- 15.2 Protests and requests for redress shall be submitted within the protest time limit. Electronic submittal shall be used and is available via the “Owner’s Corner” link found on the Yacht Scoring event main page or via email to race.committee@eastportyc.org. A diagram of the incident, if applicable, cannot be submitted via Yacht Scoring, and should be scanned and emailed to the RC at race.committee@eastportyc.org prior to the hearing.
- 15.3 The alternative penalty acceptance form (RRS Appendix V2) will be available via the “Documents & Forms” link found on the Yacht Scoring event main page. The form may also be emailed to the RC at race.committee@eastportyc.org.
- 15.4 The protest time limit is sixty (60) minutes after the protesting boat’s RC signal vessel dock time. This posting constitutes the notification required in RRS 61.3. The time limit for a Request for Redress based on an incident in the racing area shall be the Protest Time Limit. This changes RRS 62.2.
- 15.5 The protest committee may schedule a hearing prior to the protest time limit if the parties and witnesses are available and have had sufficient time to prepare. The time and location of each protest hearing will be posted on the official notice board.

16 SCORING

- 16.1 One (1) race is required to be completed to constitute a series.
- 16.2 A boat’s series score will be the total of her race scores.
- 16.3 Boats to be scored TLE will be scored points equal to the number of boats finishing within the finishing window plus two (2) points by the RC without a hearing, but no worse than the number of entries. This changes RRS A4.2 and A5.

17 SAFETY REGULATIONS

- 17.1 [DP] A boat that retires from a race, or leaves the racing area between races, shall notify the RC or the race office at the first reasonable opportunity.
- 17.2 [NP] [DP] A boat shall not exercise right of way, cross in proximity to, or interfere with reasonable transit of the race area by commercial ships, tugs, or barges. Boats must take evasive action well in advance of a potentially dangerous situation. The US Coast Guard, ship captains, and bay pilots have been encouraged to report any incident they observe.
- 17.3 A boat without way may use any means of propulsion to avoid commercial traffic that is under way provided:
(a) the boat does not gain an advantage;
(b) use of the propulsion is the boat's only means of avoiding the commercial traffic; and
(c) the boat submits a report to the race office by the protest time limit describing the incident and the boat's actions.
- 17.4 The RC or protest committee may protest a boat for SI 17.2 and/or 17.3 based on information received from any source. The protest time limit does not apply. A report from the US Coast Guard, a ship captain, or a bay pilot will be accepted as evidence without the author present. This changes RRS 60.2, 60.3, 61.3, and 63.6.

18 DISCLAIMER OF LIABILITY

Competitors participate in the regatta entirely at their own risk; see RRS 4. The OA will not accept any liability for material damage or personal injury or death sustained in conjunction with or prior to, during, or after the regatta.

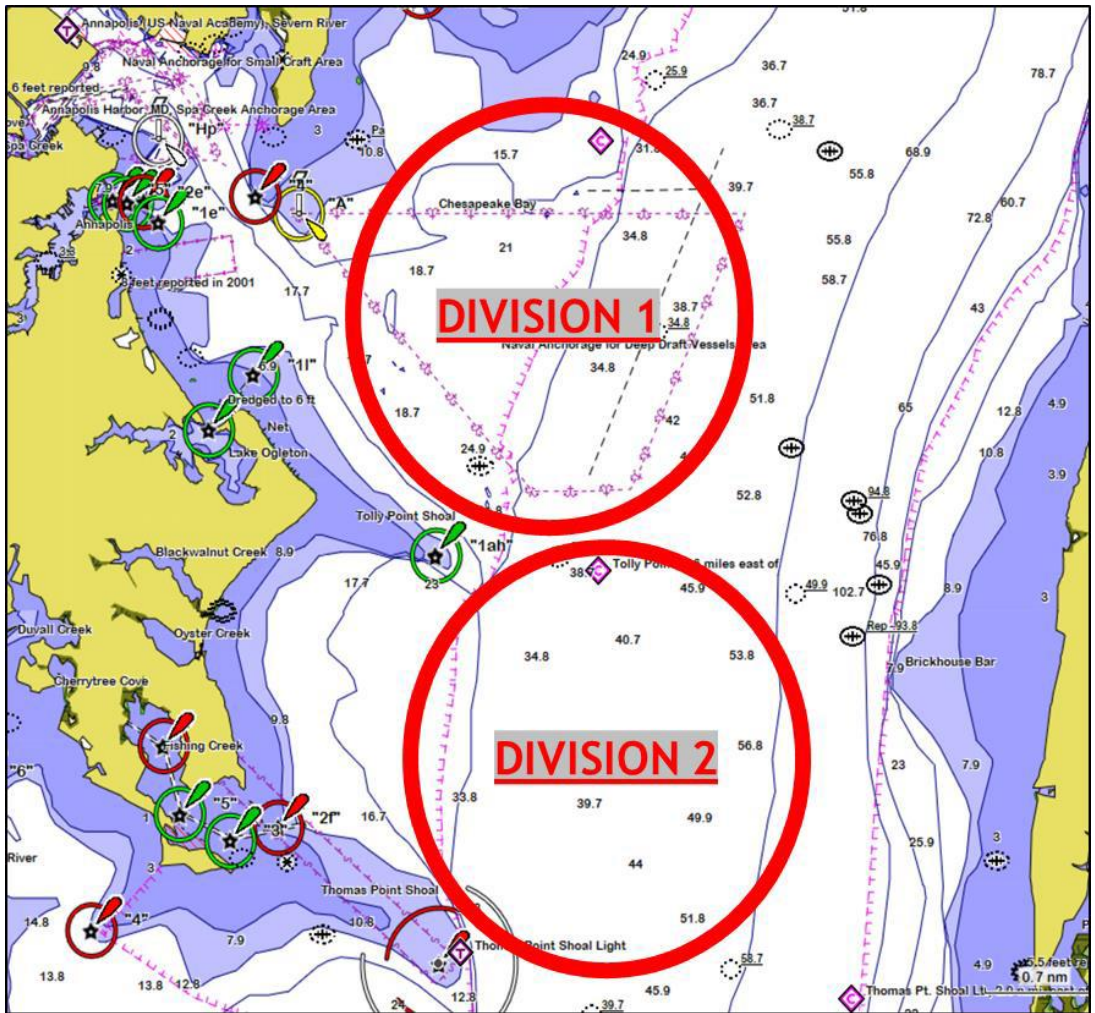


Figure 1. DIVISION 1 & DIVISION 2 Locations

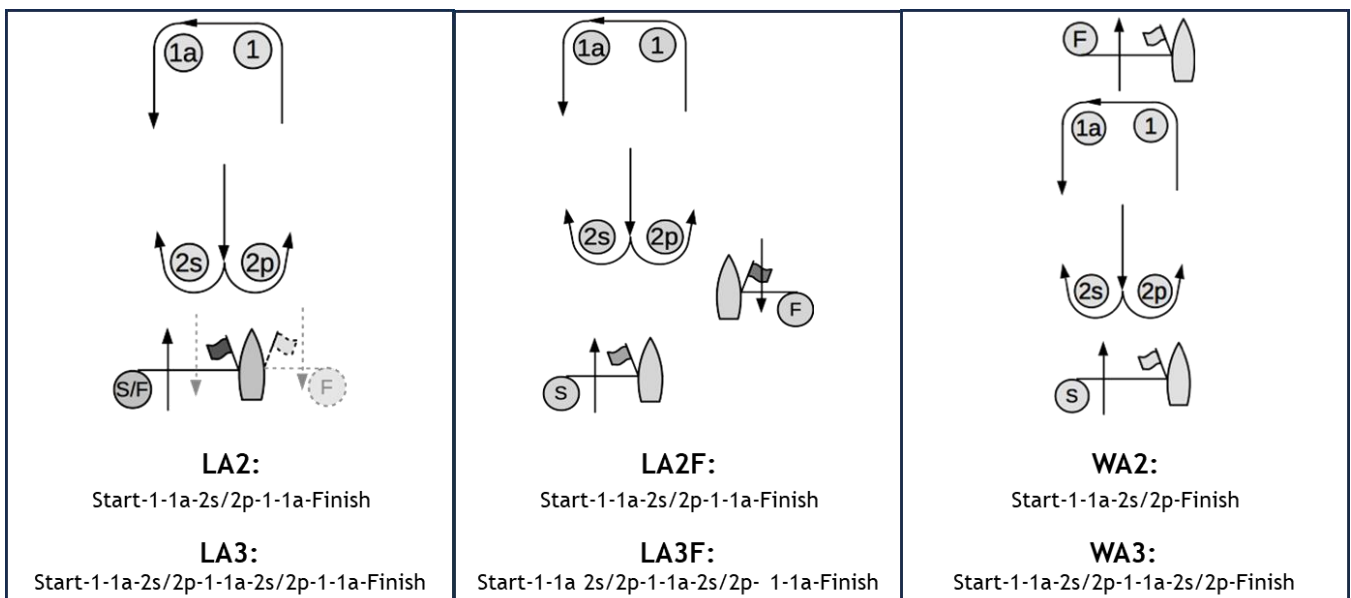


Figure 2. Drop Mark Course Diagrams

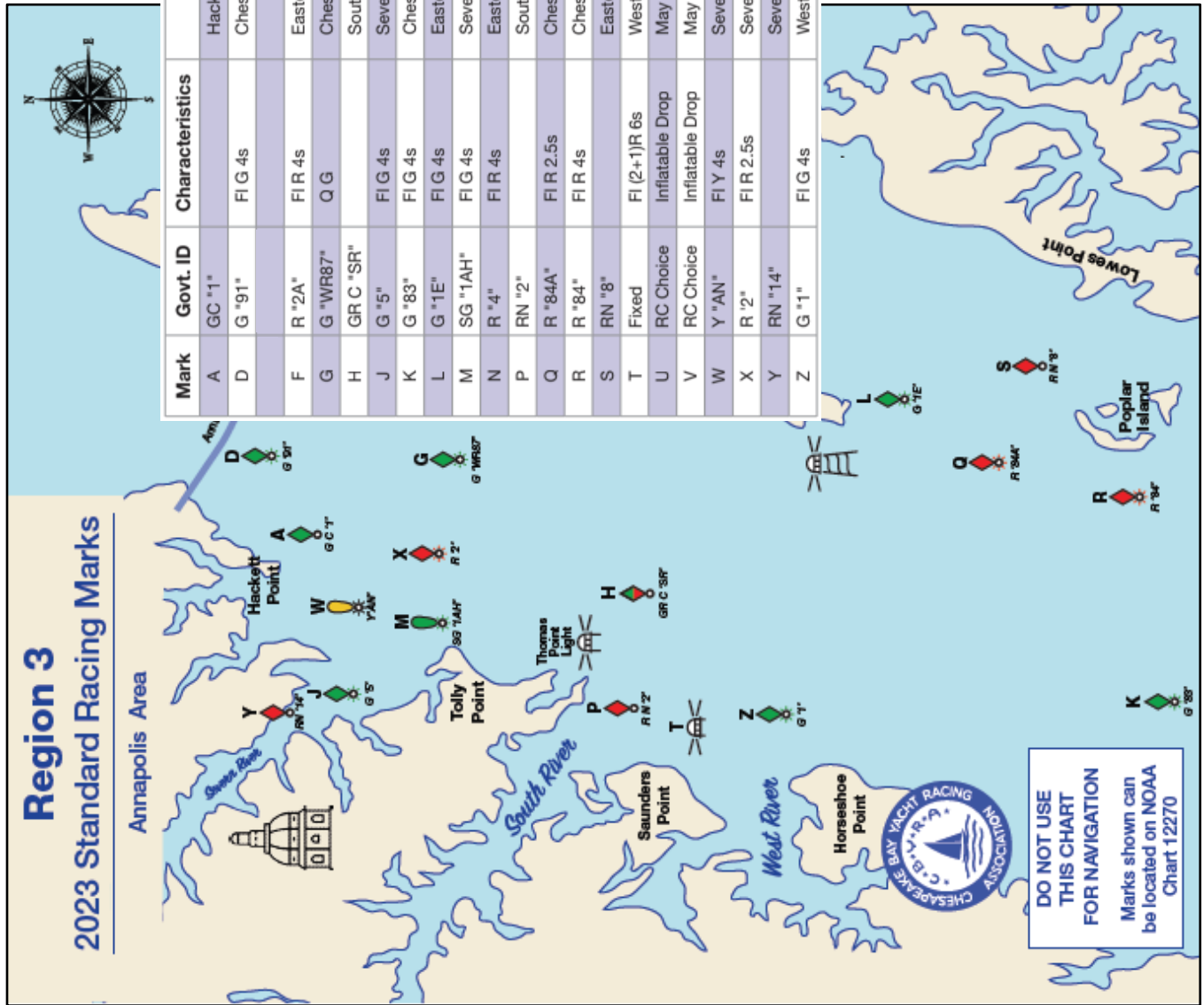


Figure 3. Government Marks Course Marks & Locations