

**2023 Newport Unlimited Regatta**  
**SAILING INSTRUCTIONS**

August 19-20, 2023

Organizing Authorities: New England Multihull Association and  
Newport Yacht Club

*Version 1.2.1, published 3:08 pm Thu, 17 Aug 2023*

Recommended Chart: 13221

**1 Rules**

The Newport Unlimited Regatta (“Regatta”) will be governed by the Racing Rules of Sailing (RRS) 2021-2024, the prescriptions of US Sailing Racing Rules, the Rules of the Road (refer to Coast Guard COLREGS), the Notice of Race and these Sailing Instructions, including any additions, changes or amendments of any of the aforementioned. In the event of conflict between the Notice of Race and these Sailing Instructions, the Sailing Instructions shall govern.

**2 Entries**

Eligible yachts may enter by completing registration with the organizing authority, New England Multihull Association. Registration is through [YachtScoring.com](https://yachtscoring.com) and can be directly accessed from <https://yachtscoring.com/emenu.cfm?eID=16213>

Entries are accepted until 0900 on the first day of the event.

**3 Notices to Competitors**

Notices to competitors will be announced at the Skippers’ Meeting.

**4 Changes in Sailing Instructions/Skippers’ Meeting**

4.1 Additional sailing instructions or changes to the sailing instructions will be issued by the race committee at the Skippers’ Meeting.

4.2 The Skippers’ Meeting will be held near the Alofsin Pier at Fort Adams at 9:00am on the first day of the regatta. A representative from each competitor is required to attend.

**5 Schedule of Race**

5.1 The warning signal for the first race each day is scheduled for 11:00 AM. Subsequent races will be held as soon as practicable after the end of the previous race. Competitors are requested to remain in the vicinity of the start after finishing. The Race Committee will run as many races as practicable each day.

5.2 No races will be started after 2:30 PM Saturday.

5.3 No races will be started after 2:00 PM Sunday.

5.4 If multiple classes are established, scratch sheets with lists of classes, code flag designations for each class, and class starting times will be distributed by email prior to the race.

**6 Check In and Retirement**

6.1 On-water communications will be via VHF Channel 73.

6.2 Competitors shall check in with the Race Committee prior to the first warning signal.

6.3 Vessels retiring shall inform the Race Committee via VHF on the above designated channel.

**7 Signals Made Ashore**

There will be no signals made ashore.

**8 Racing Areas**

The racing area will be north of the Newport Bridge in the vicinity of Gould Island unless otherwise announced by the Race Committee.

**9 Courses**

9.1 The courses on Saturday for all Classes will be generally windward/leeward courses using government marks or drop marks. The race committee will attempt to select a windward mark

from Appendix I, and designate it as such on the course board. If no such mark is practicable, the race committee will indicate an alternate government mark using its actual nautical chart notation [Example: R “6”, which is a bell south of Castle Hill].

9.2 Sunday will be a distance race.

9.3 Saturday Courses

9.3.1 Courses will be displayed on a whiteboard on the starboard side of the committee boat showing the marks to be passed.

9.3.2 The first letter will be the first mark of the course, and the last letter will be the finish mark. (Example: ALF – Govt mark A, Leeward Drop Mark, Finish). If the finish mark is at the signal boat, it will be designated “F”. (See 11.1).

9.3.3 The Race Committee may indicate that the course is to be sailed twice around by displaying the number 2 after the course.

9.3.4 All government marks shall be passed on the side farthest from the next mark, except all 180° roundings will be made leaving the mark to port.

9.3.5 The range and bearing to the windward mark will be displayed. . [Example W1 1.2 235 indicates once around with the first mark at a range of 1.2 nautical miles, bearing 235 magnetic].

9.3.6 Windward and leeward marks will be rounded to port.

9.3.7 If no leeward mark is specified, the leeward mark is the starting pin, and the finish is downwind. (Example: W1: Start, windward mark, finish; W2: Start, windward mark, round starting pin to port, windward mark, finish)

9.3.8 The race committee may finish the last race on Saturday at the windward mark. If so, the finish line will be between the orange flag on the committee boat and the windward mark. This course, if used, will be designated with a “.5” [Example W1.5, or W2.5”], indicating an extra half lap.

9.4 Distance Race

9.4.1 There will be three designated distance race courses, and a potential custom course. The committee boat will display the course designation on a whiteboard on the starboard side of the committee boat.

9.4.2 The start will be in the vicinity west of Rose Island, east of Jamestown, and south of the Newport Bridge. The designated courses are described below using both navigation chart identifiers, and Sail Newport South Bay Race Chart (SNSBRC) buoy identifiers. A custom course will be described using only SNSBRC buoy identifiers. All courses will finish between Fl R 6 sec. Beacon on Ft. Adams breakwater and SNSBRC mark “A” W. of Goat Island. We will have scorekeepers on the breakwater, however record your GPS finish time as a backup. Preferring the Ft Adams end of the line is recommended, to assist with visibility.

9.4.3 Course A – “Around Jamestown” (approx 21.0nm)

Leave green and red BELL “NR” off Beavertail Point to starboard

Must pass through center span of Jamestown Bridge.

Leave red BELL “2” NE of Conanicut Pt to starboard.

Must pass through one of the three center spans of the Newport Bridge.

Leave red NUN “2” E. of Jamestown to port. (SNSBRC “F”)

Finish

9.4.4 Course B – “Around Gould Island” (approx 12.7nm)

Leave red BELL “6” SW of Castle Hill to port.

Must pass through one of the three center spans of the Newport Bridge.

Must round Gould Island in either direction.

Must pass through one of the three center spans of the Newport Bridge.

Leave red NUN “2” E. of Jamestown to port. (“F” on SNSBRC)

Finish

#### 9.4.5 Course C – “Around Castle Hell\* Bell” (approx 7.1nm)

Leave red BELL “6” SW of Castle Hill to port.

Leave red NUN “2” E. of Jamestown to starboard. (“F” on SNSBRC)

Finish

\* not a typo

9.4.6 Custom Course: The race committee may establish a custom course at race time to accommodate unanticipated conditions. This will be indicated by multiple letters and/or numbers. This will be the custom course using SNSBRC race buoy identifiers. All designated marks are to be passed on the side farthest from the previous mark, and left on the side that does not require crossing a straight line path from the previous mark (hereafter referred to as the “Anti-Peter Principle.”) If the same mark is used before and after another mark, the intermediate mark will be rounded to port. The same finish will be used as for all other distance courses.

### 10 Marks

Custom windward or leeward marks will be inflatable marks

All other marks will be government marks or Sail Newport permanent drop marks (yellow barrels)

A keep-away buoy may be set off the stern of the Race Committee Boat and is considered an extension of the R.C. Boat.

#### ***Restrictions:***

***All yachts racing under the Newport Bridge must pass through one of the three center spans.***

***All yachts must keep clear of the Newport Navy Base Security Zone: Due to Homeland Security Restrictions, all yachts must not pass east of a line starting at a point 200 yards west of the Breakwater light beacon, R 14 Fl 4s BELL and the Red and Green Can off Coasters Harbor Island.***

### 11 The Start & Finish

11.1 The Start – All classes will start using Racing Rules of Sailing Rule 26.

11.2 The first starting sequence each day will be at 1100 or one minute after AP comes down.

11.3 There may be a series of short blasts before the start of any race sequence.

11.4 The Starting Line will be between an orange flag on the Committee boat and the starting mark.

11.5 The Finish Line will be between a staff displaying an orange flag on the race committee boat and the finish mark. If you are looking downwind the finish mark will be to the right of the committee boat.

11.6 If conditions warrant, the Race Committee may shorten the course in accordance with rule 32. The Race Committee may shorten the course at a rounding mark, or at the center span of the Newport or Jamestown Bridges.

### 12 Recalls

12.1 Individual Recalls will be signaled by International Code Flag “X” and a sound signal for yachts over early. The Race Committee will attempt to notify each yacht recalled via VHF on the channel designated in Check-in & Retirement. However, it is each yacht’s individual responsibility to start correctly.

12.2 See RRS 29.1.

12.3 General Recall will be signaled by International Code Flag “First Repeater”, accompanied by two sound signals, and indicates that the class is recalled for a new start. When a General Recall has been signaled, starts for succeeding classes will be postponed accordingly. See RRS 29.2.

### **13 Postponements**

13.1 Postponement will be indicated by International Code Flag “AP” (Answering Pennant) accompanied by two sound signals.

13.2 Postponements will be for an indefinite number of five-minute periods.

13.3 One minute after the lowering of International Code Flag “AP”, which will be accompanied by one long sound signal, the Warning Signal will be made.

### **14 Penalty**

RRS 44.1 is modified so that the two-turn penalty anywhere on the course is replaced with a one-turn penalty.

### **15 Time Limit**

15.1 For round the buoy racing, and any yacht that does not finish within 30 minutes of the first finisher of the race will be scored Time Limit Expired (TLE). Any yacht not finishing a long distance race by 5:00PM will be scored TLE without a hearing.

### **16 Protest**

Protests are strongly discouraged. Protests may be filed according to the NEMA Race Rules and/or the Racing Rules of Sailing Part 5.

### **17 Scoring**

17.1 The Low-Point Scoring system as in Appendix A will apply. When 5 or more races have been completed, a boat’s series score will be based on the total excluding the worst score.

17.2 Handicaps will be computed using Time on Time.

17.3 The distance race will be scored as two races with the same finish. If a competitor’s distance race score is her lowest, only one of the two scores will be excluded.

### **18 Withdrawal**

In the event a vessel withdraws from the race, for whatever reason, the skipper must notify the Race Committee on VHF channel 73 or via phone immediately. If the need warrants it, this message may be conveyed by a competitor to the Race Committee.

### **19 Trophies**

First, second, and third place trophies will be awarded.

### **20 Courtesy Broadcasts**

The Race Committee will make courtesy broadcasts on VHF channel 73 to inform competitors of the order of starting postponements, general recalls, and other race-related information. Receiving such information does not break RRS 41. The absence, inaccuracy or untimeliness of such broadcasts shall not be grounds for granting redress. This changes RRS 62.1.

## Appendix I Saturday Race Mark Designations

The intention is to use the same windward mark for all Saturday races. Once a windward mark has been established, it will only be changed for subsequent races if there is a significant change in conditions that makes the previous windward mark impractical.

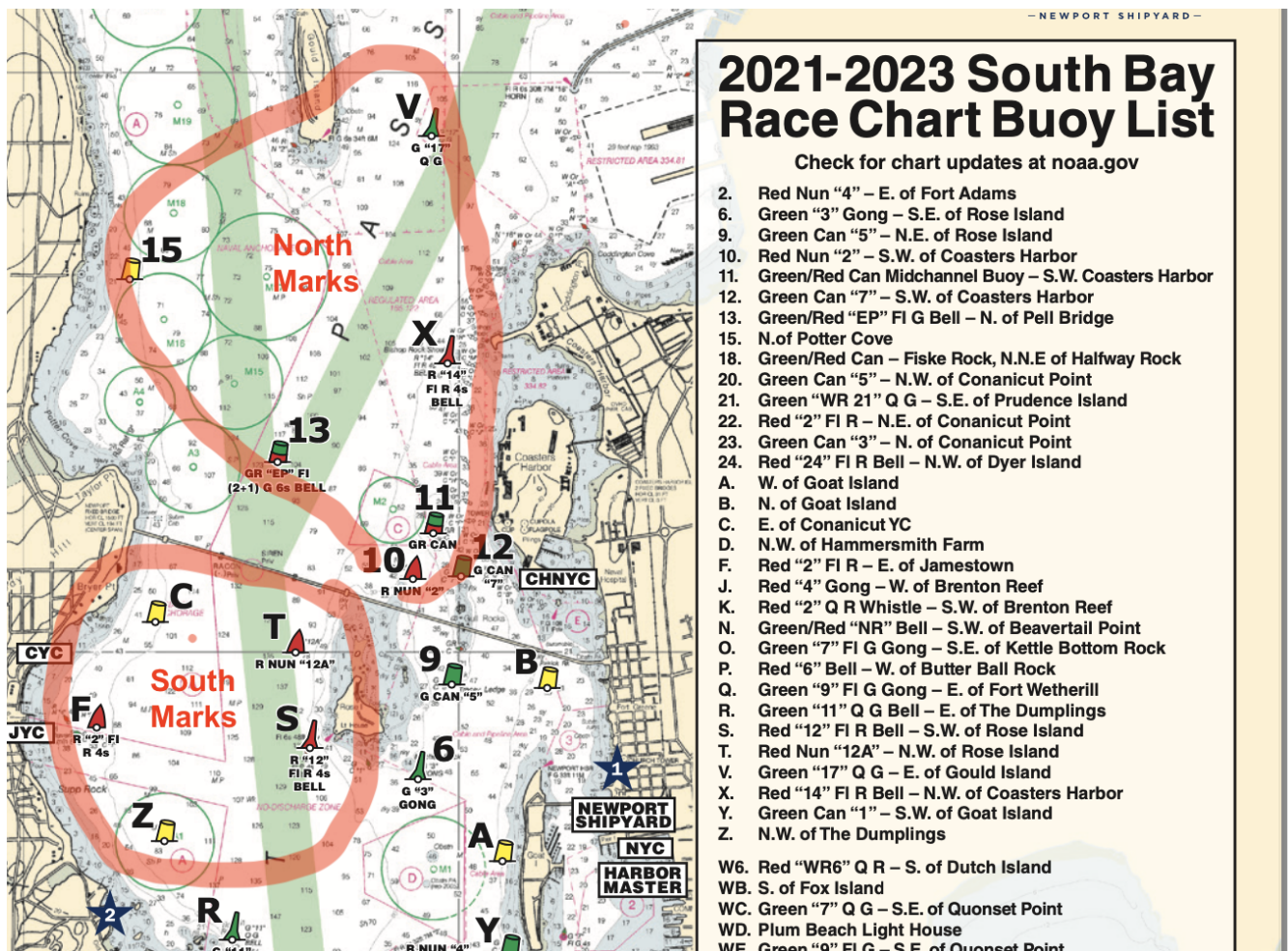
The race committee will identify courses using a mix of designated marks on the current Sail Newport South Bay Race Chart, and inflatable drop marks. The relevant portion of this chart is included below, and copies are available at the Sail Newport Dock Office, just south of the Alofsin Pier (the skipper's meeting location). The primary intention is to use mark north of the bridge ("North Marks" on the chart). If necessary, the race committee may use marks south of the bridge ("South Marks") on the chart.

Note: Some of these marks are permanent drop marks maintained by Sail Newport, not government marks. These are indicated by yellow barrel icons on the chart.

**North Marks:** 10, 11, 13, 15, X, V

**South Marks:** C, F, S, T, Z (Note: F is a government mark, "Finish" will be implied, not specified)

**Inflatable Marks:** W, L (windward, leeward).



## Appendix 2 Distance Course Diagrams

