



SAILING INSTRUCTIONS

Newport Harbor Yacht Club / San Diego Yacht Club
February 9-10, 2024

1 RULES

- 1.1 Rules of the Offshore Racing Rule (ORR) shall apply for boats racing under ORR Rules.
Link: [ORR Rulebook](#). See Notice of Race (hereafter “NOR”) 1.2 for contact / application information.
- 1.2 Rules of the Offshore Racing Rule for Offshore Cruising/Production Racing Yachts shall apply for boats racing under racing under ORR-ez.
Link: [ORRez Rule Book](#). See NOR 1.2 for contact / application information.
- 1.3 The US Safety Equipment Requirements, (hereafter “USSER”), US Coastal level requirements, as modified by NOR 14 shall apply.
- 1.4 Advertising on a boat shall comply with the requirements of WS Regulation 20 for Category A.
- 1.5 [DP] [NP] All boats are required to install, activate and maintain a position transponder (YB Tracker) supplied by the OA and is required to be utilized as described in NOR 7.
- 1.6 Competitors may retrieve boat position data in compressed form, as a link from the YB Tracking event dashboard: <https://yb.tl/Links/ir2024>
- 1.7 [DP] denotes a rule for which the penalty, at the discretion of the protest committee, may be less than disqualification.
- 1.8 [NP] denotes a rule that may not be grounds for a protest by a boat. This changes RRS 60.1(a). If the jury concludes that a boat has broken one of these rules, or RRS 47, it may impose a penalty other than disqualification.

2 ALTERATIONS TO THE RULES

- 2.1 [DP] RRS Part 2, for determination of the right of way between contestants, Part 2 of the racing rules shall govern, except between sunset and sunrise, when the following shall be substituted for Rule 17: “When two boats are on the same tack and within three of the larger boat’s overall length of each other, the overtaking boat shall keep clear and neither boat shall alter course toward the other.” Sunset and sunrise shall be determined as published by the US Naval Observatory at each boat’s current position.
- 2.2 [NP] RRS 56.2 is changed as follows:
- (a) A Traffic Separation Scheme (TSS) shall be understood to mean an area shown on a nautical chart, or in the notice of race, as a TSS.
 - (b) **A boat shall not impede, or present a threat of impeding, the safe passage of a power-driven vessel in a TSS traffic lane.**
 - (c) If a commercial, government, or naval power-driven vessel in a traffic lane makes five short and rapid blasts on her whistle (a danger signal, see IRPCAS rule 34(d)) and the boat causing the danger signal can be identified, then the boat is subject to protest under rule 56.2.
 - (d) If an official complaint/action is lodged against a boat by a commercial, government, or naval power-driven vessel, by a pilot, by vessel traffic service (VTS), or by other local government authority, it shall be presumed that the boat has broken rule 56.2.
 - (e) The race committee will cooperate with and provide relevant information to VTS and other governmental authorities regarding investigations of boats impeding a power-driven vessel.

- 2.3 [DP] For the purpose of RRS 47 - biodegradable material used to band spinnakers is not trash if lost overboard during a spinnaker launch.
- 2.4 RRS 51 Movable Ballast and RRS 52 Manual Power are modified to permit the positioning of hull appendages, specifically adjustable keels and water ballast, and other control devices powered by hydraulic or electric power on boats so designed and so rated by the rating authority. All such movable ballast systems shall be capable of manual operation if powered systems are inoperable. All other boats shall comply with RRS 51 and RRS 52.
- 2.5 RRS 51 is further modified for all boats to permit the movement of sails not in use while racing; however, all sails not being flown must remain within a boat's lifelines.
- 2.6 RRS 62, Redress, is modified to add e) interruption of a boats progress by a government authority.
- 2.7 RRS 64.2, Penalties will be modified by adding: (c) When the protest committee (PC) decides a boat that is a party to a protest hearing has broken a rule outside of RRS Part 2, it may assign a time penalty to be added to the boat's corrected time."
- 2.8 US Sailing prescriptions to RRS 63.2 will not apply.
- 2.9 [DP] RRS 29 Recalls will be signaled as described. The Race Committee will also attempt to notify recalled boats on VHF Channel 71. Failure of the Race Committee to make the attempt to notify, failure of the competitor to hear the notification, delay in notification, or the sequence of such notification shall not constitute grounds for redress. Any boat that is on the course side at her starting signal and which does not return to the pre-start side of the line to properly start shall be protested. The penalty for OCS shall be one hour of elapsed time added to a boat's elapsed time on the course in lieu of being scored OCS.
- 2.10 [DP] All boats are reminded that launching/controlling/flying any unmanned aerial system (UAS or "drone") over federally controlled areas, which includes military exercise areas over the entire San Clemente Island or exclusion zones in open waters up to 50 nm south of San Clemente Island, or in the general vicinity (<1.0 nm) of any commercial or military vessel, is strictly prohibited.
- 2.11 ORR rule 4.02 is modified. There is no limitation on crew weight. Per RRS 87, ORR has issued OA permission to make this change.
- 2.12 ORR rule 10.02.1 is modified. There is no limitation on the number of spinnakers and staysails carried. Per RRS 87, ORR has issued OA permission to make this change.
- 2.13 Advertising on a boat shall comply with the requirements of WS Regulation 20 for Category A.

3 NOTICES TO COMPETITORS

- 3.1 Notices to competitors will be posted on the official notice board online (www.islandsrace.com). Courtesy copies may be posted on notice boards at NHYC and at SDYC located on the east side of the Sailing Center, facing the water.
- 3.2 Changes to the sailing instructions:
- 3.2.1 Changes Made Ashore - Any change to the SIs made prior to 1800, Thursday, February 8, 2024 will be posted to the official notice board and as a courtesy, may be added to the notice board at NHYC.
- 3.2.2 Changes Made Afloat - Per RRS 90.2(c), any change to the SIs made after 1800, Thursday, February 8, 2024 will be announced afloat prior to the warning signal for the class to which it applies. The RC signal boat will display flag "L" to indicate that a change is being made, and the change will be announced via VHF 71.

4 [NP] POSITION TRANSPONDER

- 4.1 It will be the responsibility of the skipper of the boat to ensure that the provided YB position transponder remains properly installed, and must make every effort to ensure it is functional and in operation for the entire race. There are no fees associated with this requirement; however, boats are responsible for returning the tracker in working order. Broken or lost transponders may be subject to replacement/damage charge of up to \$1000. Transponders will be available at the following times and locations:
- Wednesday, Feb 7, 1100 – 2000 @ NHYC
 - Thursday Feb 8, 1100 – 2000 @ NHYC
- 4.2 YB Trackers are to be returned to San Diego Yacht Club either in person to the SDYC Front Desk, Security Booth, or Sailing Office upon completion of the race, or by mail by 2/19/24. Mail to San Diego Yacht Club, 1011 Anchorage Lane, San Diego, CA 92106 (Attn: Sailing Office).
- 4.3 If for any reason you are unable to complete the race and return to a port other than San Diego, please call 619-758-6310 or send an email to sailing@sdyc.org and let the SDYC Sailing Office know what arrangements you will make to return the tracker.

5 SCHEDULE

Classes, Flags, and Scheduled warning signals are as follows:

Start	Class	Start Flag	Time of Warning
1	ORR F	Numeral pennant 1	12:25
2	ORR E	Numeral pennant 2	12:35
3	ORR D	Numeral pennant 3	12:45
4	ORR C	Numeral pennant 4	12:55
5	ORR B	Numeral pennant 5	13:05
6	ORR A	Numeral pennant 6	13:15

6 CHECK-IN

- 6.1 The race committee signal boat intends to be on station beginning at 11:15.
- 6.2 [NP] A boat is required to be in the starting area and check in via radio no later than fifteen (15) minutes before her scheduled warning signal.
- 6.3 A boat shall check in via VHF Channel 72. A boat must announce her name, sail number, and number of crew on board and be acknowledged by the RC.
- 6.4 Boats who fail to check in will be scored DNS without a hearing. This changes RRS A4 and A5.

7 THE COURSE

7.1 The race committee will publish to the official notice board (www.islandsrace.com), any changes to the course described in these SIs, no later than Thursday, February 8 at 1800.

- 7.1.1 The starting line will be located near the Point Fermin Buoy in vicinity of 33° 41.5'N, 118°17.5W.
- 7.1.2 The diagrams in Addendum A show the Course, the order in which marks are to be passed, and the side on which each mark is to be left.
- 7.1.3 The approximate course length will be 142.0 nautical miles.

8 SAFETY AND AREAS OF POTENTIAL CONCERN

- 8.1 All boats shall maintain a proper radio watch (VHF 16) at all times and heed specific warnings and directives as conditions require.
- 8.2 A boat that retires from the race shall notify the RC by email (sailing@sdyc.org) or phone (619-758-6310) as soon as possible with her final destination and ETA ashore.
- 8.3 The Islands Race crosses a Traffic Separation Scheme. Therefore the race committee would like to call special attention to the RRS Preamble to Part 2 and RRS 56.2 as changed herein. The IRPCAS rule 10 referenced in RRS 56.2 can be found at: (see page 22-24)

<https://www.navcen.uscg.gov/pdf/navrules/navrules.pdf>

Additional information regarding the San Pedro VTC can be found at:

<https://mxsocial.org/assets/pdf/usermanual3.pdf>

- 8.4 [NP] San Clemente Island is situated in a military exercise area and is used as a military range testing site and is surrounded by a permanent '3 nm from shore' military exclusion zone. Attachment A5 illustrates an additional zone (hereafter SHOBA zone) shaded in pink that is beyond the 3 nm zone and is also restricted by military. This zone is bound by the following coordinates:
SHOBA 1 (32 55.0n 118 15.0w); SHOBA 2 (32 45.0n, 118 15.0w); SHOBA 3 (32 45.0n, 118 34.9w); SHOBA 4 (32 55.0n 118 25.0w). Boats shall not enter the SHOBA zone. Boats entering either the 3-mile zone at any point or SHOBA zone will be protested by the Race Committee.
- 8.5 There are ongoing operations that include military vessel traffic operating from San Clemente to Camp Pendleton, on random transit lines at unknown times or intervals. It is advised that all vessels maintain maximum visibility and keep watch, especially during low visibility and night time hours, using all available means including but not limited to listening for VHF 16 broadcasts, radar, AIS, and required night time navigation lights.
- 8.6 The finish mark is in an area known to have significant kelp growth.

9 MARKS

Mark	Mark Description	Mark Type
Start	Start mark	Yellow inflatable buoy
1	Catalina Island	Fixed
2	5 nm due west of San Clemente LT	Virtual @ 33 01.786n / 118 41.753w
3	Southwest of San Clemente	Virtual @ 32 40.0n / 118 40.0w
Finish	Btw "SD" and "SD3" Physical location of SD and SD3 will vary	Virtual @ "SD" 32 37.338n / 117 14.753w Virtual @ "SD3" 32 38.220n / 117 14.224w

10 THE START

- 10.1 The starting line will be located near the Point Fermin Buoy in vicinity of 33° 41.5'n, 118°17.5w.
- 10.2 The starting line will be between a staff displaying an orange flag on the RC signal boat to starboard and the course side of a starting mark to port.
- 10.3 As a courtesy, the RC will attempt to hail any boat it identifies as OCS via VHF 71. Failure to make a hail or failure of communications equipment will not be grounds for redress. This changes RRS62.1(a).

11 CATALINA

- 11.1 Mark 1 - Leave Catalina Island to port

12 SAN CLEMENTE

- 12.1 Mark 2 @ 33 01.786n / 118 41.753w
This is a virtual mark of the course and shall be left to port. Located **5 nm west of San Clemente light bearing 090°mag.**
- 12.2 Mark 3 @ 32 40.0n / 118 40.0w
This is a virtual mark of the course and shall be left to port. Located **14.7 nm southwest of China Pt. light bearing 056°mag.**

13 THE FINISH

- 13.1 The finishing line will be a virtual line approximately 1 nm long and extending from lat/lon identified in 13.2.1 below, northeast to 13.2.2. Competitors shall leave SI 13.2.1 to starboard, and SI 13.2.2 to port.
- 13.2 The precise virtual coordinates are:
- 13.2.1 32 37.338n / 117 14.753w (San Diego Channel entrance buoy SD will be in close vicinity)
- 13.2.2 32 38.220n / 117 14.224w (San Diego Channel buoy SD3 will be in close vicinity)
- 13.3 A boat's YB Tracker will transmit the boat's position every 60 minutes in real time from the start, until boats are at the dock in San Diego. The YB Tracker will also transmit a lat/lon and PST time when it crosses the virtual finish line in SI 13.1. This data will be used to determine a boat's finish time. [NP/DP]
- 13.4 At the *finish*, a boat shall log her *finish* time in UTC-8 hours (PST) by taking a photo or screen shot of her navigation equipment, clearly showing her finish time and position simultaneously. This image shall be emailed to jess.gerry@nhycstaff.org and sdycsailing@gmail.com as soon as possible, but no later than four (4) hours after *finishing*. Please include your boat name in the subject line of the email. Submissions may also be presented as a printed document, or on digital usb drive, in person to a member of the Race Committee or in the SDYC Sailing Office.
- 13.5 In the event of a significant discrepancy between a boat's observed finish time compared with that reported by the YB Tracker, competitors can file a score inquiry. It will be up to the discretion of the Race Committee in conjunction with the Protest Committee (PC) to determine the finish time to be used. Evidence of a boat's track, other than the YB track, may be requested which can be, but is not limited to, a boat's navigation software log file, testimony or evidence from other boats, personal race tracker or AIS logs, etc.

14 PROTESTS AND REQUESTS FOR REDRESS –

- 14.1 Appendix T – ARBITRATION is in effect.
- 14.2 The protest time limit for each boat is 2 hours after their finish. This changes RRS 61.3.
- 14.3 Request for Hearing forms may be provided at the Official Regatta Notice Board [Fillable PDF forms also available from here: [US Sailing website](#).].
- 14.4 RRS 61 is modified to add the additional requirement: A boat intending to protest shall report her *intentions* and the boat(s) being protested to the R/C by email no later than 1 hour after finishing or retiring, per SI 14.7.
- 14.5 Hearings will be heard by an Arbitrator, and if necessary, a protest committee. The approximate order and time of hearings will be posted on event website and sent to individual emails provided on the Protest form and/or on regatta registration form. It is the responsibility of each boat to check the schedule and attend the hearing in a timely manner with all parties and witnesses in order. The Arbitrator or Protest Committee is not responsible for searching for parties or their witnesses.
- 14.6 Hearings not settled by Arbitration will be heard by a protest committee and will be scheduled in agreement with parties to the hearing.
- 14.7 [Protests and requests for redress forms](#) shall be delivered within the appropriate time limit. Forms can be delivered: by taking a photo of the first page of the form and emailing it to both protests@sdyc.org and jess.gerry@nhycstaff.org. Notices of protests and requests for redress filed will be posted and updated as quickly as possible to inform boats of hearings in which they are parties or named as witnesses.
- 14.8 Hearings will be held either in person or by ZOOM web conference and may be heard as soon as the *parties* are available.
- 14.9 Notices of protest by the race, technical, or protest committees will be posted to inform boats under RRS 61.1(b).
- 14.10 A request for redress based on a protest committee decision shall be delivered no later than 30 minutes after the decision was posted. This changes RRS 62.2.

15 SCORING

- 15.1 Monohull ORR (Overall / Classes) will be scored with ORR certificates using a boat's ORR "Offshore Offwind TCF".
- 15.2 Monohull ORRez will be scored with ORRez certificates for Class only. This changes the NOR.
- 15.3 YB Tracker list of low bandwidth race position reports: <https://yb.tl/Links/ir2024>

16 Awards

- 16.1 Awards presentation is currently planned for Saturday at 1500 on the Spinnaker Deck (north side of main clubhouse) at San Diego Yacht Club.

17 DISCLAIMER

Sailing is an activity that has an inherent risk of damage and injury. Competitors in this race participate entirely at their own risk. See RRS 3, Decision to Race. The race organizers (OA, RA, Race Committee, Protest Committee, host clubs, sponsors, or any other organization or official) will not be responsible for damage to any boat or other property or the injury to any competitor, including death, sustained as a result of participation in this race. By participating in this race, each competitor agrees to release the race organizers from any and all liability associated with such competitor's participation in this event to the fullest extent permitted by law.

END

CONTACTS**Race Committee**

RC Signal Boat (START):

NHYC Race Committee

Primary: VHF 71

Secondary – CHECK IN: VHF 72

Newport Harbor Yacht Club

Jess Gerry, Race Director

949-723-6870, jess.gerry@nhycstaff.org

San Diego Yacht Club

Front Desk, 9:00 am – 7:00 pm

619-221-8400

Jeff Johnson, Race Director

619-758-6310, sailing@sdyc.org

TowBoatUS - Catalina Island/ Boat US

Avalon, CA

24-hour Contact: 310-510-1675

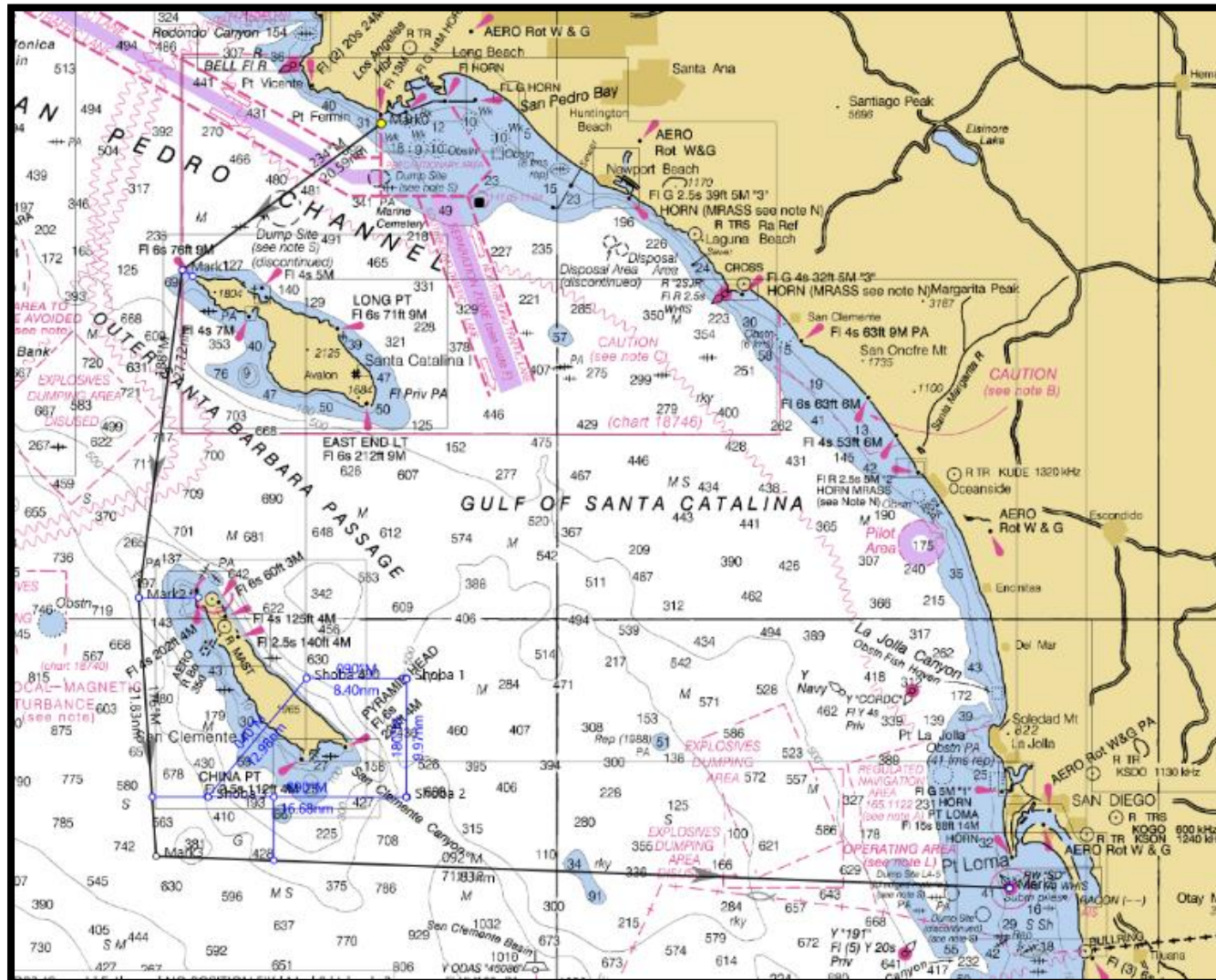
U.S Coast Guard Rescue Coordination Center

VHF 16

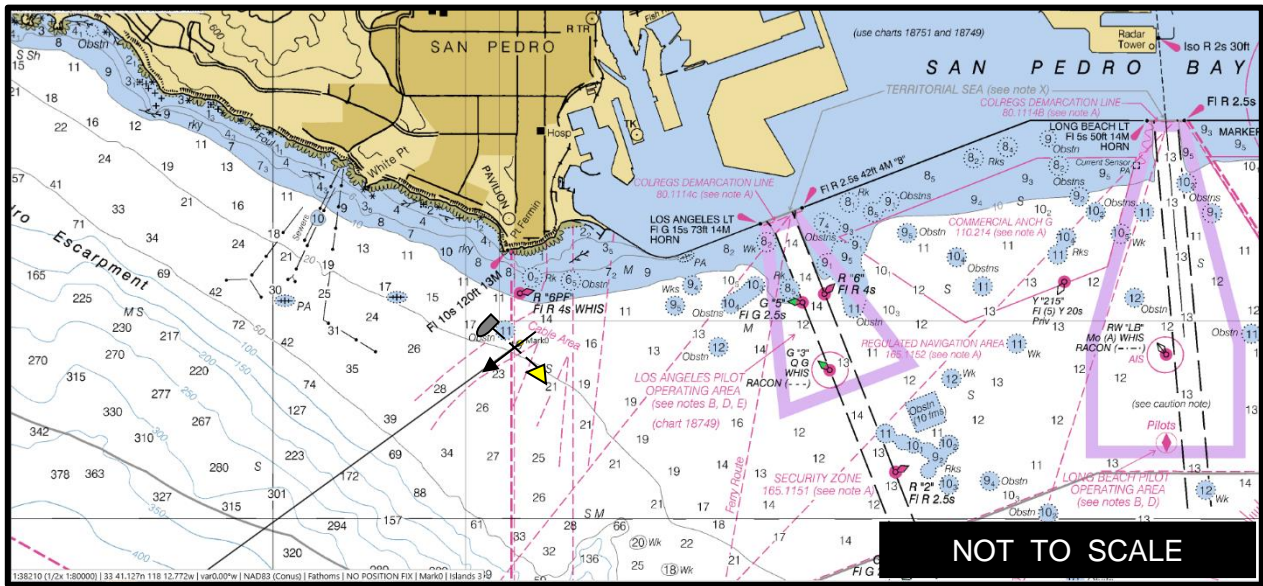
24-hour Emergency Contact: 510-437-3700 / 3701

A. ADDENDUM A - ILLUSTRATION OF COURSE DETAILS

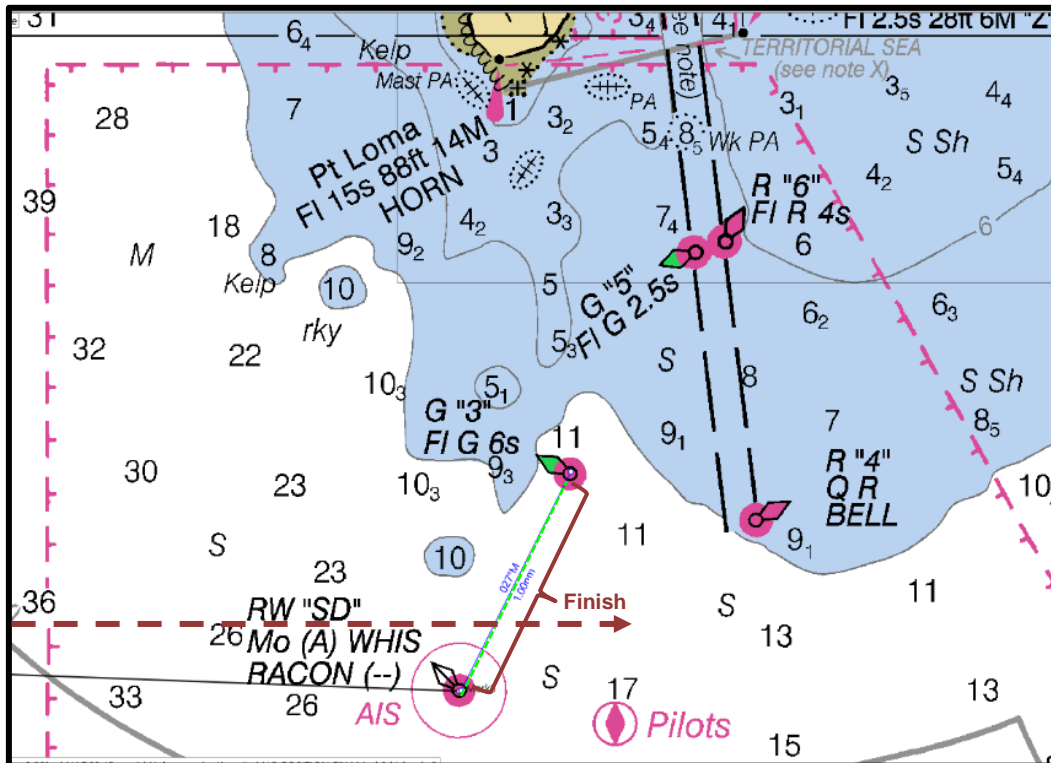
A1. Detail of Islands Course



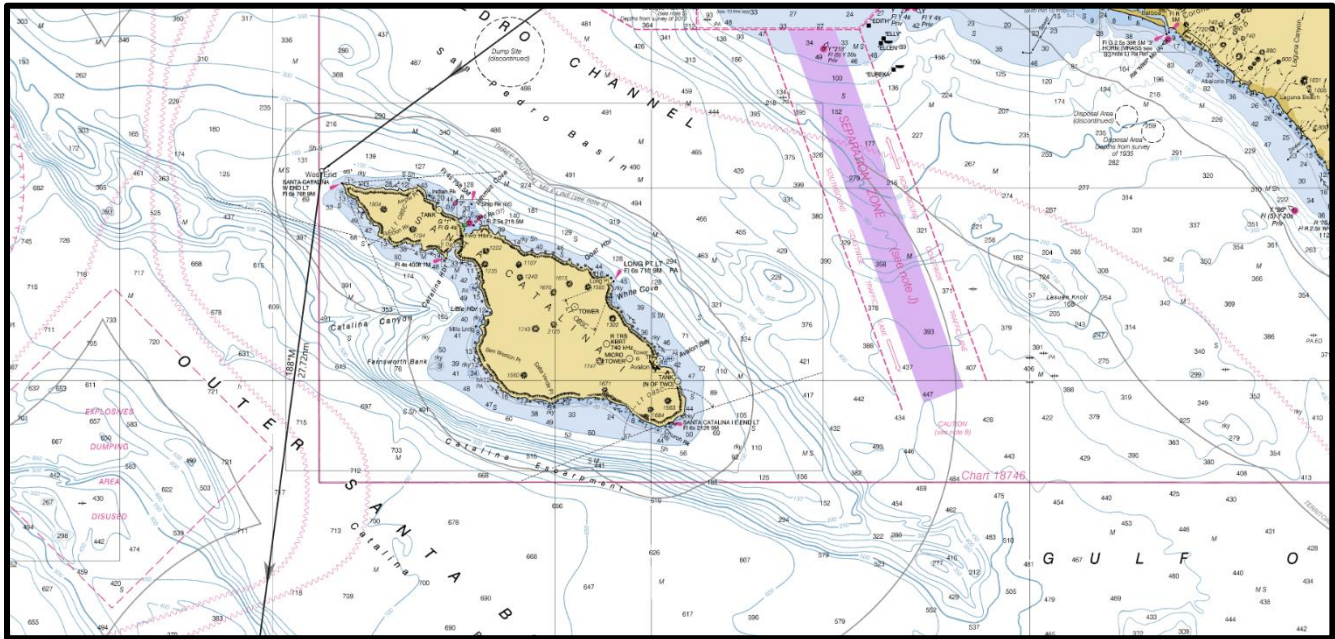
A2. Detail of Approximate Start Area -



A3. Detail of Approximate Finish Area South of Point Loma -



A4. Detail of Catalina Island – See SI 11.
 Mark 1 – leave Catalina Island to port



A5. Detail of San Clemente Island – See SI 8 and SI 12.
 Mark 2 to port, Mark 3 to port,

