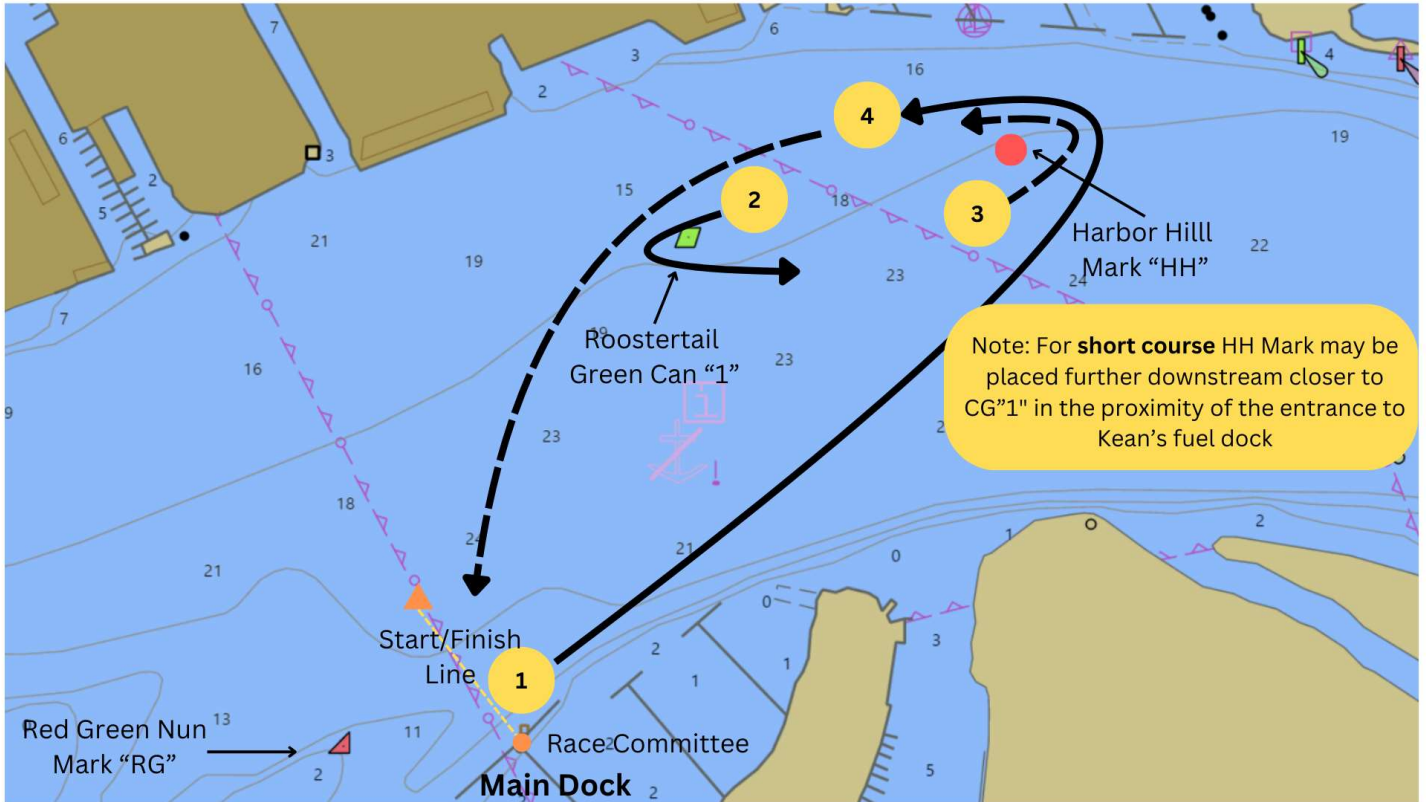


Class 4 Short Course (4S) :

Taking all marks to port, **(1)** head from the Starting Line to the Harbor Hill Mark ("HH"), **(2)** proceed to the Green Buoy CG"1" (Roostertail Mark) near the Roostertail, **(3)** head back to the Harbor Hill Mark ("HH"), **(4)** round Green Buoy CG"1" (Roostertail Mark) to port and proceed to the Finish Line, crossing in the opposite direction as the start (downstream). Approximate distance 1.54 miles (2.49km)



Instructions ammended August 7 to give RC latitude to shorten distance to HH mark without need for any other specification