

IDA LEWIS DISTANCE RACE SAILING INSTRUCTIONS

AUGUST 16–17, 2024

Organizing Authority: Ida Lewis Yacht Club

1 RULES

- 1.1 The regatta will be governed by the rules as defined in *The Racing Rules of Sailing*.
- 1.2 The US Safety Equipment Requirements of US Sailing for **US Coastal**. A boat may not be protested for failing to comply with these Requirements except by the Race or Protest Committees.
- 1.3 The current ORC rules.
 - 1.3.1 ORC Rule 200.1 is changed as follows:
 - i. One additional crew under the age of 16 is permitted and shall not count against the crew or weight limit.
 - ii. Weighing in is not required. However, the skipper of a boat that is later protested for exceeding the maximum crew weights cited on the boat's certificate shall make all crew weights available prior to the protest hearing and will be required to certify the accuracy of the data.
- 1.4 For PHRF divisions - the current PHRF Regulations of the Narragansett Bay PHRF Association.
- 1.5 Rules 28, 29.1, 41,44.3(c) 55, 60.1, 63.1, 64.1, A5.2 and Race Signals are changed.
- 1.6 The US Sailing Prescription to rule 63.2 is deleted.
- 1.7 The OA has adopted World Sailing Test Rule DR21-01 and definition of start is changed as described in the NOR.
- 1.8 The Cox Ledge wind farm has been designated an Obstruction. See Appendix A.

2 NOTICES TO COMPETITORS

Notices to competitors will be posted on the Official Notice Board on the Yacht Scoring Event Web Site.

3 CHANGES TO THE SAILING INSTRUCTIONS

Any changes to the Sailing Instructions will be posted before 0800 hours on Friday, August 16, 2024.

4 SIGNALS MADE ASHORE

- 4.1 Signals made ashore will be flown from the yardarm of the flagpole at Ida Lewis Yacht Club.
- 4.2 When flag AP is displayed ashore, the warning signal will be made not less than one (1) hour after flag “AP” is lowered. This changes Race Signals.
- 4.3 The Race Committee will make announcements concerning postponements, courses, premature starters, etc., on VHF Channel 79A. Failure of of competitors to receive or hear such announcements will not be grounds for redress.

5 CLASSES AND CLASS FLAGS

- 5.1 The Classes and Class Flags for classes.

	CLASS NAME	CLASS NUMBER	CLASS FLAG
A.	ORC 1	ONE	Numeral Pennant One
B.	ORC 2	TWO	Numeral Pennant Two
C.	ORC 3	THREE	Numeral Pennant Three
D.	Double-Handed	FOUR	Numeral Pennant Four
E.	PHRF - ALOHA	FIVE	Numeral Pennant Five
F.	PHRF - CORONET	SIX`	Numeral Pennant Six
G.	PHRF- BAGHEERA	SEVEN	Numeral Pennant Seven

Each boat shall race in the class to which it is assigned

- 5.2 While racing, each boat shall display the numeral pennant for her respective class from her backstay no less than six (6) feet above the deck.

6 CHECK IN AND RETIREMENT

- 6.1 Prior to the first warning signal, all boats shall check in with the Race Committee by hailing the Race Committee on VHF CHANNEL 69 with their sail numbers and having the Race Committee affirmatively respond.
- 6.2 Boats retiring shall inform the Race Committee by phoning (401) 846-1969 extension 6 as soon as possible.

7 COURSES: See Addendum 1 Courses

8 THE START

Friday, August 16

ORC 1 Warning Signal	1100 hours
ORC 2 Warning Signal	1110 hours
ORC 3 Warning Signal	1120 hours
Double-Handed Warning Signal	1130 hours
PHRF Aloha Warning Signal	1140 hours
PHRF Coronet Warning Signal	1150 hours
PHRF Bagheera Warning Signal	1200 hours
Cruising Spinnaker Warning Signal	1210 hours

- 8.3 Races will be started in accordance with rule 26.

- 8.4 The starting line will be between a staff flying an orange flag on the Race Committee Signal Boat anchored south of Rose Island in the East Passage of Narragansett Bay and the nearby race mark.
- 8.5 The starting race mark will be an Orange Inflatable.
- 8.6 Boats shall keep clear of the starting area unless they are in their start sequence.
- 8.7 Any boat not starting within **10** minutes of the last starting signal of the day shall be scored DNS without a hearing. This changes rule A5.

9 THE FINISH

- 9.1 The finish shall be a line between G“3” Fl G 2.5 sec Bell off Goat Island and a staff flying an orange flag (which will be illuminated at night) at the north end of the deck at Ida Lewis Yacht Club.
- 9.2 A Mark of the Course (yellow inflatable buoy) will be placed at approximately 41 ° 28.81 'N, 071 ° 19.61 'W (on the course side of the finish line)
 - 9.2.1 This buoy, which **shall be left to starboard, is a mark of the course, but NOT PART OF THE FINISH LINE.**
 - 9.2.2 If the Race Committee observes that a boat has not left this mark on the correct side prior to crossing the finish line and does not correct the error, it shall score the boat NSC without a hearing; and the penalty shall be one hour added to the boat's corrected time. This changes rule A5.2.
 - 9.2.3 If, as a result of a valid protest hearing, the protest committee determines that a boat failed to honor this mark and sail the course correctly, the minimum penalty the protest committee shall assess is one hour added to the boat's corrected time. This changes rule 64.2.
- 9.3 All boats, when they are abeam of Castle Hill Light approaching the finish, shall call the Race Committee on VHF Ch 79A or via telephone 401-846-1969 extension 6 and report their boat name, sail number and time. If reporting by telephone, information may be left on the race answering machine.
- 9.4 At night, boats shall illuminate their sail numbers when approaching the finish line.
- 9.5 Upon crossing and clearing the finish line, Boats shall take their own finish time, and then continue along the East-West Fairway of Newport Harbor until they reach the ILDR Muster Area along the southern mooring field. See Appendix B. ILDR Muster Area will be designated by a large Orange Inflatable Mark.

At that time, Boats can safely reduce speed, sail and start auxiliary power, as necessary. Boats shall then hail RC mark boat(s) on Ch.79A, and direct them to come alongside in their preferred manner. Boats will then deliver their completed, signed Declaration Sheet & Yellow Brick Transponder to that RC mark boat.

Alternatively, Boats may hail RC mark boat(s) on Ch. 79A to state the boat's name and declare their intention to deliver the completed, signed Declaration Sheet & Yellow Brick Transponder to the Race Committee at the Finish Line Desk on the deck of the north side of the Ida Lewis Yacht Club within ONE (1) hour after finishing.

Boats may then leave the Muster Area after verbal confirmation from the RC mark boat(s).

- 9.6 Boats shall complete and sign a declaration that they have sailed the race in accordance with the Rules; and shall deliver it to the Race Committee on the RC mark boat after finishing or to the Race Committee at the Finish Line Desk on the deck on the north side of the Ida Lewis Yacht Club within ONE (1) hour after finishing.

10 PENALTY SYSTEM

- 10.1 RRS 44.3, Scoring Penalty, shall apply.
- 10.2 The penalty under 44.3 (c) is changed to 10 minutes of elapsed time added to the total elapsed time for each incident. Thus changes 44.3(c).

11 TIME LIMIT

The time limit for all boats is 1800 hours on Saturday, August 17, 2024

12 RENDERING ASSISTANCE

Attention is drawn to the responsibility imposed by good seamanship and RRS1.1

13 PROTESTS

- 13.1 Boats intending to file a protest or a request for redress shall inform the Race Committee immediately after finishing by radioing the Race Committee on VHF Ch 79A or calling the race office at (401) 846-1969 extension 6 until acknowledged.
- 13.2 Protests must be submitted in writing to the Race Committee at Ida Lewis Yacht Club within one (1) hour of finishing. Protest forms will be available at the Race Committee Finish Line Staff Desk located on the deck on the north side of the Ida Lewis Yacht Club.
- 13.3 The Protest Committee anticipates that it will begin hearing protests at 1330 on Saturday, August 17, 2024 or as soon after the parties have finished as possible.
- 13.4 The Protest Committee may apply a penalty other than disqualification for breaking a Rule other than one of Part 2 of the Racing Rules. This changes rule 64.2.

14 SCORING

- 14.1 ORC: Time allowances for ORC boats will be calculated using the boat's single number All Purpose Rating Model Time-on-Time (TOT) rating.
- 14.2 PHRF: Time allowances for PHRF boats will be calculated using Time-on-Time (TOT) with the handicaps as provided by PHRF-Narragansett Bay.

15 GOVERNMENT BUOYS

Government buoys, when not specified as part of the course, have no required side except for safe navigation.

16 ADVERTISING

- 16.1 Advertising shall be in accordance with ISAF regulation 20.
- 16.2 Competitors may be required to display sponsor flags or graphics on the side of their hulls; these graphics, if any, will be supplied by the OA.
- 16.3 Advertising for tobacco products is prohibited.
- 16.4 Advertising that conflicts with any race sponsor is prohibited unless permission is requested and authorized by the OA in writing.

17 PRIZES

17.1 Prizes will be awarded on Saturday, August at hours at Ida Lewis Yacht Club

18 NOTES

18.1 In the event that life-saving equipment is lost overboard, it should be recovered. If recovery is impossible, any equipment that floats shall be reported immediately to the Race Committee and the nearest U.S. Coast Guard station on VHF Ch 16.

18.2 Competitors are reminded of their responsibility to comply with the U.S. Coast Guard Pollution Regulations.

18.3 Narragansett Bay is a restricted channel and sailing vessels do not have right-of-way over a vessel under power which may be restricted in her ability to maneuver.

18.4 Skippers are reminded that there is shallow water on the northwest shore of Fort Adams.

18.5 Competitors are encouraged to review Appendix A which describes and defines the Cox Ledge Obstruction. Competitors shall not enter the Cox Ledge area designated as an obstruction in Appendix A while racing.

18.6 In an emergency, if there is no one on duty at 401-846-1969 extension 6, competitors are requested to call (401) 486-5138.

18.7 Competitors not in their starting sequence who wish to contact the Race Committee shall do so on VHF CHANNEL 69.

18.8 All competing yachts shall carry, mount, and keep turned on while racing, a Yellow Brick transponder provided by the Organizing Authority. Transponders shall be mounted on a stanchion in a location exposed to the sky and aft of the steering station. The transponder must be returned to the Race Committee after finishing. A participant not returning the transponder by the end of the race time limit or two hours after finishing, whichever is later, may be scored DNF without a hearing and will be charged for the cost of this transponder. This changes RRS 63.1.

18.9 Protests alleging infringement of SI paragraphs 9.3 through 9.6 and 18 shall only be initiated by the Race Committee or the Organizing Authority. This changes RRS 60.1

**Ida Lewis Yacht Club
Commodore
Christopher Arner**

**Ida Lewis Distance Race Chair
Anselm Richards**

**Race Committee Chair &
Principal Race Officer
Guy Sanchez**

**Chief Judge
Matt Hill**

Appendix A: Cox Ledge Obstruction

The Cox Ledge Obstruction is defined by the six virtual marks described below and the lines connecting the adjacent virtual marks and is designated as an *Obstruction* pursuant to the RRS definition.

Boats may not enter the area designated as the Cox Ledge Obstruction while racing.

Cox Ledge Obstruction Virtual Boundary Marks

#1

41° 09' 39.55" N

71° 16' 42.36" W

#2

41° 04' 11.78" N

71° 11' 53.14" W

#3

41° 04' 45.33" N

70° 49' 11.11" W

#4

41° 08' 58.61" N

70° 49' 40.77" W

#5

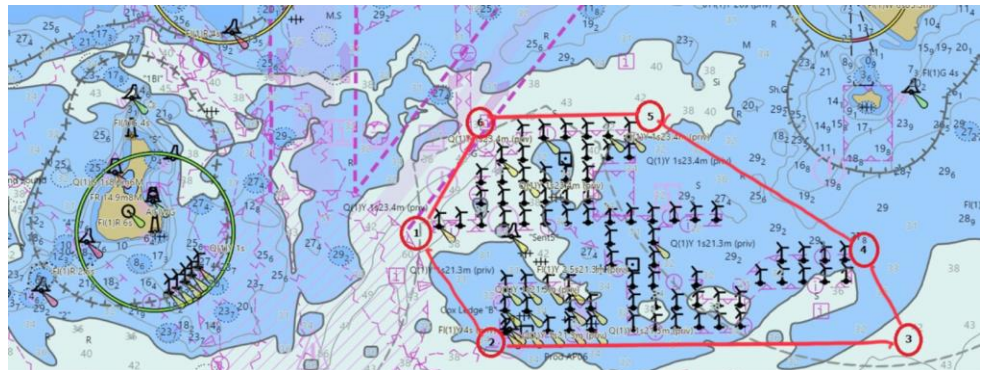
41° 14' 40.84" N

71° 03' 01.68" W

#6

41° 14' 40.84" N

71° 11' 30.89" W



APPENDIX B AFTER FINISHING MUSTER AREA

Location of Yellow Inflatable Mark and Muster Area Orange Mark are Approximate.

