

FIGAWI RACE WEEKEND

EST.

1972



53RD ANNUAL

Figawi

MAY 24-26, 2024



SAILING INSTRUCTIONS



FRIDAY, MAY 24

- 0800 – 2330 **HYC Launch Service** – channel 69 or 3 short blasts
- 0900 – 2000 **Official Figawi Merch Store** *Authentic Figawi Swag: Accept No Imitations!*
Hyannis Yacht Club, 490 Ocean Street, Hyannis
Lower level open to the public (via Veterans Beach)
- 1400 – 2200 **Figawi Shuttle** - runs between Hyannis Marina and HYC
Hyannis Marina pickup/dropoff at the Flag Pole by G Dock
HYC pickup/dropoff at Club Lower Entrance. KON Limousine
- 1500 – 2000 **53rd Annual Figawi Kickoff Party and Race Registration**
Hyannis Yacht Club-Lower Level 490 Ocean Street, Hyannis
Cash Bar and Grill / Music by Ted Wyman
Town of Barnstable weekend parking passes available for purchase.
Note: There is no formal captains meeting.

SATURDAY, MAY 25

- 0600 – 2000 **HYC Launch Service**
Breakfast available for purchase on the patio
- 0955 **Race Warning Signal**
Please consult Sailing Instructions for Race specifics
- 1000 **Race Start Signal**
Please consult Scratch Sheets for individual START time
- 1100 **Figawi Race Office** *Figawi Fun: Where Laughter Guides Every Sail!*
Veronica's Cottage, Swains Wharf, Nantucket Boat Basin
Have race questions? Visit Katie, Kel, and Meg...the A Team of Info
Closes at 1700 or an hour after the race ends, whichever comes first
- 1200 – 1800 **Official Figawi Merch Tent** *Authentic Figawi Swag: Accept No Imitations!*
Swains Wharf, Nantucket Boat Basin
- 1500 – 1700 **Sponsor Marketplace**
Main Event Tent, Commercial St Nantucket
Open to the public / Purchase of alcohol beverages must show ID 21+
- 1800 – 1900 **Sponsor & Media Reception**
Pre-Event Invitation Only / Hosted by the Figawi Board
Raw Bar by EJ Harvey, Seagrille Restaurant
- 1900 – 2200 **Figawi Post Race Party** *Sailor's Squeeze Soirée: Making Waves with Half the Space*
(½) Main Event Tent, Commercial St Nantucket
Entry purchase for race participants only via boat owner

SUNDAY, MAY 26

- 0900 – 1500 **Figawi Race Office, Nantucket**
Veronica's Cottage, Swains Wharf, Nantucket Boat Basin
- 0900 – 1700 **Figawi Race Office**
Veronica's Cottage, Swains Wharf, Nantucket Boat Basin
Answers, swag, cornhole, spin the prize wheel
- 1130 **24th Annual Figawi Crawford Cup Invitational** *Watch the action from the dock!*
Presented by Hy-Line Cruises and Premier Commercial
Off the end of Straight Wharf, Nantucket Boat Basin
MA High Schools send their best double handed team to compete for the coveted title.
Bring a bev, bring your friends, come cheer on future collegiate sailors!
- 1300 – 1600 **Sponsor Marketplace**
Main Event Tent, Commercial St Nantucket
Open to the public / Purchase of alcohol beverages must show ID 21+
- 1600 – 1700 **Prize Giving for the 53rd Annual Figawi Race**
Main Event Tent, Commercial St Nantucket / Open to everyone
- 1700 – 1800 **Sponsor Marketplace**
Main Event Tent, Commercial St Nantucket / Open to the public
Purchase of alcohol beverages must show ID 21+
- 1900 – 2200 **Figawi Post Race Party** *Sailor's Squeeze Soirée: Making Waves with Half the Space*
(½) Main Event Tent, Commercial St Nantucket
Entry purchase for race participants only via boat owner

SCHEDULE

2024 FIGAWI RACE WEEKEND

53RD ANNUAL FIGAWI RACE WEEKEND

1. RULES

Figawi will be governed by the Racing Rules of Sailing. Note RRS Fundamental Rule 4- "The responsibility for a boat's decision to participate in a race or to continue racing is hers alone."

2. EQUIPMENT

All personnel on deck shall wear personal flotation while starting and finishing without exception, and at all other times except when the captain of the boat directs that it may be set aside.

All boats must comply with World Sailing Special Regulations Category 4 as posted on the Figawi website (figawi.com). In addition all boats must carry an EPFS (Electronic Position Fixing System) e.g. GPS.

Entries of classic yachts built before the introduction of Special Regulations may be exempted some regulations at the sole discretion of the race committee.

Please pay special attention to the following provisions:

- 1. All boats must have lifelines in accordance with Regulation 3.14.**
- 2. All boats must carry marine VHF radios in accordance with Regulation 3.29.**
- 3. All boats must have sail numbers (NOT JUST MANUFACTURERS NUMBERS OR LOGOS) in accordance with Regulation 4.01. NO SAIL NUMBER = NO SCORE.**
- 4. All boats must carry personal equipment (lifejackets, etc.) in accordance with Regulation 5.**
- 5. Crews shall practice the drill for crew overboard recovery at least once annually in accordance with Regulation 6.04.**

Only the Race Committee may protest a violation of this section. This changes RRS 60.1.

Any violation of this section may be penalized at the discretion of the jury.

RRS 55.3 is changed to allow a one design boat in a true one design configuration that includes outriggers, to sheet a spinnaker or headsail through such an outrigger. However, an outrigger may only be deployed after the start, and only deployed when actively flying a sail sheeted through it. In addition, the boat must keep clear of other boats while initially deploying an outrigger.

3. NOTICES TO COMPETITORS

HYANNIS YACHT CLUB: the official notice board will be located in the vicinity of the Steward's office.

NANTUCKET BOAT BASIN: The official notice board will be located outside the Main Entrance of the Figawi Tent.

CHANGES TO SAILING INSTRUCTIONS: will be posted on the official notice board before 0800 on the day they take effect.

4. POSTPONEMENT

In the event of a postponement ashore the 'AP' flag will be flown from the yardarm of Hyannis Yacht Club. The warning signal will be made not less than one hour after the lowering of 'AP' ashore.

In the event of a postponement on the water the warning signal will be made one minute after the lowering of 'AP'.

In the event that a postponement ashore or on the water delays the scheduled first start signal- the amount of this delay must be added to each boat's scheduled start time as printed on the scratch sheet. This time will be announced on VHF channel 71. This time will also be sent out via a robocall and text to the on-island cell phone used on the registration form. Once the pursuit start is underway - should the start have been previously delayed- the Race Committee Start Boat will fly Flag 'F' to call competitor's attention to the necessity to adjust starting times.

5. OFFICIAL TIME

The Figawi Race will use GPS time as read from the Figawi Race Committee Boat's GPS. There will be three radio time checks at 0930, 0945, and 0955.



INSTRUCTIONS

53RD ANNUAL FIGAWI RACE WEEKEND

6. THE START

PURSUIT START – Saturday, May 25, 2024

STARTING AREA: South of Hyannisport Jetty. The start line will be between an orange flag on the Figawi Race Committee Start Boat and the orange tetrahedron buoy to port.

RESTRICTED AREA: The Restricted Area will be bounded by the Race Committee Start Boat, the orange tetrahedron starting mark, and two yellow tetrahedrons (see diagram). Boats shall not enter the restricted area until 5 minutes before their start. Any boat entering this area before this time will be subject to protest and disqualification. Only the Race Committee may protest a violation of this rule. This changes RRS 60.1.

STARTING TIMES: Figawi is a pursuit race with handicaps built in to the starting time of each boat. For each boat's start time, refer to the scratch sheet. Starting times will be one of eight times, depending on the course chosen for that class. All classes will likely not sail the same course. The course chosen for each class will be announced on VHF 71 three times: 9:30, 9:45, and 9:55. The course will also be delivered via the automated call and text system to the cell number you provided.

WARNING SIGNAL	0955	NUMERAL PENNANT 1 1 SOUND SIGNAL
PREPARATORY SIGNAL	0956	FLAG 'P' 1 SOUND SIGNAL
ONE MINUTE TO START	0959	FLAG 'P' REMOVED 1 SOUND SIGNAL
START	1000	NUMERAL PENNANT 1 REMOVED 1 SOUND SIGNAL FIRST BOAT STARTS

7. OCS BOATS

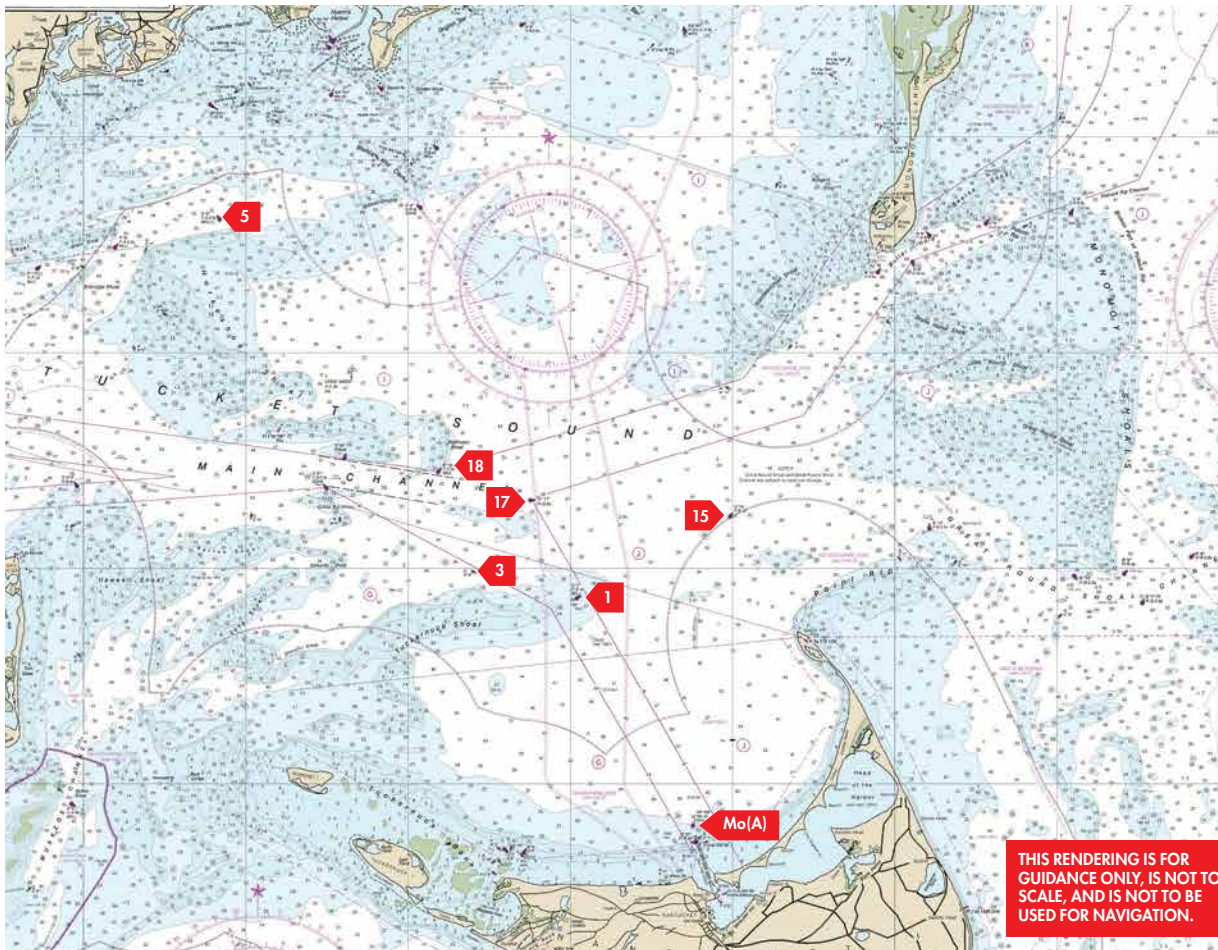
Due to the pursuit start, boats on the course side of the start line at their start time **will not be notified per RRS 29.1**. The Race Committee **may** notify such boats on VHF 71 **if practical**. This changes RRS 29.1.



INSTRUCTIONS

53RD ANNUAL FIGAWI RACE WEEKEND

INSTRUCTIONS



8. THE COURSES

ALL CLASSES-ALL COURSES

There will be a large orange inflatable mark located approximately .5 at approximately 190-220 degrees from the starting line. All competitors in all classes, sailing all courses, must leave this mark to starboard when exiting the start area enroute to the first mark listed in each course. This mark is to be considered the first mark of each course and must be honored as part of the course.

COURSE 1: #17 to STARBOARD, FINISH between COMMITTEE BOAT to PORT and INFLATABLE MARK to STARBOARD, approximately 1 mile and approximately 285 degrees from Mo(a) Nantucket and approximately 41 19.020N, 70 07.55W

COURSE 2: Bell #5 to PORT (NORTH of Horseshoe Shoal), FINISH between COMMITTEE BOAT to PORT and INFLATABLE MARK to STARBOARD, approximately 1 mile and approximately 285 degrees from Mo(a) Nantucket and approximately 41 19.020N, 70 07.55W

COURSE 3: Bell #5 to PORT (NORTH of Horseshoe Shoal), #17 to STARBOARD, FINISH between COMMITTEE BOAT to PORT and INFLATABLE MARK to STARBOARD, approximately 1 mile and approximately 285 degrees from Mo(a) Nantucket and approximately 41 19.020N, 70 07.55W

COURSE 4: Bell #5 to PORT (NORTH of Horseshoe Shoal), #15 (NORTH of Great Point) to STARBOARD, FINISH between COMMITTEE BOAT to PORT and INFLATABLE MARK to STARBOARD, approximately 1 mile and approximately 285 degrees from Mo(a) Nantucket and approximately 41 19.020N, 70 07.55W

COURSE 5: Tuckernuck Shoal Bell #1 to PORT, #15 (NORTH of Great Point) to STARBOARD, FINISH between COMMITTEE BOAT to PORT and INFLATABLE MARK to STARBOARD, approximately 1 mile and approximately 285 degrees from Mo(a) Nantucket and approximately 41 19.020N, 70 07.55W

COURSE 6: Tuckernuck Shoal Bell #1 to STARBOARD, Half Moon Shoal Bell #18 to PORT, FINISH between COMMITTEE BOAT to PORT and INFLATABLE MARK to STARBOARD, approximately 1 mile and approximately 285 degrees from Mo(a) Nantucket and approximately 41 19.020N, 70 07.55W

COURSE 7: Bell #5 to (NORTH of Horseshoe Shoal) to PORT, #15 (NORTH of Great Point) to STARBOARD, Tuckernuck Shoal Bell #1 to PORT, FINISH between COMMITTEE BOAT to PORT and INFLATABLE MARK to STARBOARD, approximately 1 mile and approximately 285 degrees from Mo(a) Nantucket and approximately 41 19.020N, 70 07.55W

COURSE 8: Bell #5, (NORTH of Horseshoe Shoal) to PORT, #17 to STARBOARD, #3 (NORTH of Tuckernuck Shoal) to PORT, FINISH between COMMITTEE BOAT to PORT and INFLATABLE MARK to STARBOARD, approximately 1 mile and approximately 285 degrees from Mo(a) Nantucket and approximately 41 19.020N, 70 07.55W

COURSES WILL NOT BE POSTED ON THE RACE COMMITTEE START BOAT.

THIS RENDERING IS FOR GUIDANCE ONLY, IS NOT TO SCALE, AND IS NOT TO BE USED FOR NAVIGATION.

53RD ANNUAL FIGAWI RACE WEEKEND

9. POSTED COURSE

Any boat determined by the Race Committee to have violated RRS 28.1 (any boat who has not sailed the course posted for its' class) may be DSQ'd without a hearing. This changes RRS 63.1.

10. SHORTENING COURSE

At any rounding mark- a Committee or Patrol Boat displaying flag 'S' with two sound signals as the first boat approaches means, "The race has been shortened- finish between this flag and the nearby rounding mark." In the event of a shortened course, time allowances will need to be recalculated to the correct allowance for the length of the actual course sailed. This means that the final race results may not be in the order that boats crossed the shortened course finish line.

11. PENALTIES

The Scoring Penalty, RRS 44.3 will apply to a boat that breaks a rule of RRS Part 2.

12. TIME LIMIT

The time limit is 1800. If no boats in a class sail the course and finish before 1800—all boats in that class will be scored DNF. If the first boat to finish in a class sails the course and finishes before 1800- any boat in her class that fails to sail the course and finish within 1 hour of the first finish will be scored DNF. These times may be adjusted by a race committee announcement on VHF 71. In the event the Committee Boat is not on station competitors may take their own finish times by leaving Nantucket MO (a) close aboard to port and reporting their finish time to Race Headquarters. Boats retiring from the race must notify the race committee on VHF 71 or by calling 508-221-6891.

13. PROTESTS

Protest forms will be available at Race Headquarters, Veronica's Cottage, Swain's Wharf. All protests shall be filed in accordance with RRS 61 and be delivered to the Figawi Race Office within one hour of the time the Committee Boat docks.

Protests will be heard Sunday morning beginning at 0900. Time and place of hearings will be posted at the Race Office on Swains Wharf, Nantucket.

14. RADIO

The race committee channel is VHF 71. Competitors must monitor this channel throughout the race. There will be three time checks: 0930, 0945, 0955. This is a courtesy only. The course chosen for each class will be announced on VHF 71 three times: 9:30, 9:45, and 9:55. The course will also be delivered via the automated call and text system to the cell number you provided. During the race, information regarding shortening or abandonment, and emergency/safety information will be broadcast on this channel.

15. FIGAWI PENNANT

All boats racing must fly the official Figawi pennant from their backstay. Only the Race Committee may protest a violation of this section. This changes RRS 60.1.

16. TROPHY PRESENTATION

Trophies to the top 4 finishers in each class, winner of the Foster Team Race, Best Performance in Spinnaker and non-Spinnaker classes, and winners of the various special awards.

17. CONDUCT

The boat owner/skipper will be responsible for the conduct of their crew offshore and onshore. We have been guests of the people of Nantucket for over 45 years—we will not allow a serious breach of good conduct by any participant to endanger this relationship. The Figawi Committee and the Nantucket Boat Basin reserve the right to eject any boat, its skipper and crew, from the Boat Basin and to reject any future entry to Figawi in the event of a serious breach of good conduct. The Town of Nantucket allows no alcoholic beverages in public. If you leave the Figawi Tent or the Boat Basin property with an alcoholic beverage you will be subject to arrest.

18. RACE OFFICE

The Race Office on Nantucket is located at Veronica's Cottage on Swains Wharf.

INSTRUCTIONS

SUNDAY MAY 26 AT 1130

24TH ANNUAL FIGAWI CRAWFORD CUP INVITATIONAL

Massachusetts High Schools send their best double handed team to compete for the coveted title. Racing takes place right off the docks of Nantucket Boat Basin.

Presented by Hy-Line Cruises and Premier Commercial



HIGH SCHOOL INVITATIONAL

THANKS

THANK YOU FOR SUPPORTING
SERIOUS FUN WITH A PURPOSE

COMMODORE

SAVANT



cisco brewers
nantucket

CAPTAIN



SAMUEL
ADAMS



AUSTIN
COCKTAILS

MassMutual
Investments

VODKA AND WHISKEY
LEMONADE COCKTAILS

Myoli
Better Beach Days



The Steamship
Authority

TWG
THE WESTPORT GROUP
Insurance solutions for industry leaders

All Natural Ingredients
NANTUCKET
NECTARS

1924-2024
1 DELICATO
Family Winery

PIXSEA

LIEUTENANT

