



**NEW YORK YACHT CLUB**  
**170th NYYC ANNUAL REGATTA**  
*incorporating the 52 Super Series*  
June 14-16, 2024  
Newport, Rhode Island

**SAILING INSTRUCTIONS incorporating Amendment 1 (in red)**

**1 RULES**

- 1.1** The event will be governed by the rules as defined in *The Racing Rules of Sailing* (RRS), including the current ORC rules, the current NYYC Classics Rules incorporating the *Classic Rating Formula* (CRF), the current PHRF Regulations as administered by the PHRF of Narragansett Bay (PHRF-NB), the current New England Multihull Association (NEMA) rules, and the current class rules for any one-design or boxrule classes.
- 1.2** Safety Equipment Requirements:
- a) Addendum 1 – US Safety Equipment Requirements (USSER)
    - All boats shall minimally comply with the US Nearshore section of the USSER and shall comply with their class rules, where applicable.
    - USSER 2.4.2, 2.4.3, and USSER 2.4.4.1 through 2.4.9 regarding Hull and Structure: Lifelines shall apply, except that boats not normally rigged with lifelines are exempt from these requirements. RRS 40.1 shall apply to exempt boats and crew shall wear PFDs consistent with USSER 3.1.3 at all times while racing.
    - In the event of a conflict between these Requirements and applicable class rules, the class rules shall apply.
- 1.3** The US Sailing prescription to RRS 63.2 is deleted. However, when redress under RRS 62.1(a), (b) or (c) has been requested by one or more boats in the same class, the protest committee may invite all boats in that class to attend and be made parties to the hearing.
- 1.4** The NYYC Classics Rules that are posted as NOR Addendum 2 shall apply to all boats sailing in the Classics divisions.
- 1.5** 12 Metre Class: In the event that a crew member falls overboard and is no longer connected to the yacht, she shall:
- a) Retire from the race
  - b) Notify the Race Committee on her respective VHF channel that she has a man overboard
  - c) Receive a score equal to the number of starters for that race without a hearing. The scoring abbreviation will be MOB.
- This changes RRS 63.1, A4, A5, and A10.
- 1.6** For the IC37 Class: OA supplied Velocitek units must be installed as directed and the Velocitek System must be operational while racing. [NP]

**2 COMMUNICATIONS: NOTICES, ANNOUNCEMENTS, VHF CHANNELS**

- 2.1** Notices, including race documents, results and amendments, shall be posted on the online Official Notice Board located on the event [website](#). Protest Committee information, including protest time limits and hearing schedules, shall be posted on the online Protest Committee Notice Board located on the event

[website](#). All notices may also be posted on the unofficial notice boards which are located in the courtyard of the NYYC Sailing Center at Harbour Court.

- 2.2 Any change to the sailing instructions will be posted before 0900 on the day it will take effect, except that any change to the schedule of races will be posted by 2000 on the day before it will take effect. Flag “Lima” will be flown to signify such posting.
- 2.3 In addition to the signals described in SI 3.3, the Race Committee will endeavor to announce the rendezvous locations as described in SI 6 at 0900 each day on VHF Channel 72. The failure to make this announcement or for a boat to hear this announcement will not be grounds for a boat to request redress. This changes RRS 62.1(a).
- 2.4 After the rendezvous locations and any other regatta announcements have been made, Race Committee signal vessels will monitor and communicate with their respective classes on the circle VHF channels listed in SI 2.5.
- 2.5 VHF Channels – The Race Committee VHF channels for each circle are shown below:
- a) Friday, June 14           Blue Circle     VHF Channel 72
  - b) Sat-Sun, June 15-16    Blue Circle     VHF Channel 72
  - White Circle    VHF Channel 69
  - Red Circle     VHF Channel 1079 (79A)
  - Green Circle   VHF Channel 71
- 2.6 Each yacht shall carry a VHF radio capable of communicating with the Race Committee on their respective circle channel.

### 3 SIGNALS MADE ASHORE

- 3.1 Flag signals will be flown from the western yardarm of the flagpole at Harbour Court.
- 3.2 When pennant “AP” is displayed ashore, “one minute” is replaced with “not less than one hour” in Race Signal “AP”.
- 3.3 Signals designating the rendezvous locations for all circles will be displayed at 0900 each day from the western yardarm of the flagpole at Harbour Court.

### 4 SCHEDULE OF RACES

- 4.1
- |                   |           |   |
|-------------------|-----------|---|
| Thursday, June 13 | 1600-1800 | Registration (Harbour Court)                        |
| Friday, June 14   | 0830-0945 | Late Registration (Harbour Court)                   |
|                   | 1100      | First Warning Signal for the Around-the-Island Race |
| Saturday, June 15 | 0745-0845 | Late Registration (Harbour Court)                   |
|                   | 1100      | First Warning Signal for all courses                |
| Sunday, June 16   | 1100      | First Warning Signal for all courses                |
- 4.2 For all fleets except the 52 Super Series, no warning signal shall be made after 1500 on Sunday, June 16.
- 4.3 For the 52 Super Series, no warning signal shall be made after 1530 on Sunday, June 16.

### 5 CLASSES, CIRCLE ASSIGNMENTS, CLASS FLAGS, SCRATCH SHEETS AND FORMAT

- 5.1 **Classes:** The Organizing Authority will divide boats into classes.
- a) For the Around-the-Island Race on Friday, June 14, classes will be assigned a numeral or alphabetic designation and be designated the Blue Circle.
  - b) For the Two-Day Series on Saturday/Sunday, each class will be given a numeral, alphabetic or class designation and be assigned each day to one of four circles (Blue, White, Green or Red). Note that a class may sail in different circles and be assigned different numeral designations on different days.
- 5.2 **Format:** For racing on Saturday and Sunday for all classes, the Race Committee will notify competitors (no later than 1900 on the day before they will take effect) of the intended type of racing for the following day:
- a) Navigator Races – SI Addendum A (using government marks and racing marks on Narragansett Bay and/or Rhode Island Sound).
  - b) Drop Mark Races – SI Addendum B (using inflatable buoys on Rhode Island Sound and/or Narragansett Bay).
- 5.3 **Scratch Sheets:** There will be separate scratch sheets for the Around-the-Island Race on Friday, and for the Two-Day Series on Saturday/Sunday. Scratch sheets will be posted on the online Official Notice Board.

**5.4 Class Flags:** Unless indicated on the scratch sheet, each boat shall display the numeric, alphabetic or class flag corresponding to her class designation, as shown on the scratch sheet, from her backstay approximately six feet above the deck from the warning signal for the first class on her circle until she is no longer racing. Boats without a permanent backstay shall conspicuously display these flags in an alternate position in the aft part of the boat.

## **6 RENDEZVOUS LOCATIONS**

**6.1** Circle rendezvous locations are listed below and will be designated as described in SI 3.3. See SI Addendum C – NYYC Primary Race Areas.

### **Rhode Island Sound:**

- Area “A” -in the vicinity of 160° M for 1.2 NM from R “2” QR Whistle marking Brenton Point
- Area “B” -in the vicinity of 120° M for 2.5 NM from R “2” QR Whistle marking Brenton Point
- Area “C” -in the vicinity of 275° M for 3.0 NM from R “2” QR Whistle marking Brenton Point
- Area “D” -in the vicinity of 225° M for 2.0 NM from R “2” QR Whistle marking Brenton Point
- Area “E” -in the vicinity of 165° M for 5.0 NM from R “2” QR Whistle marking Brenton Point
- Area “F” -in the vicinity of 145° M for 3.5 NM from R “2” QR Whistle marking Brenton Point

### **Newport Harbor and near the Newport Pell Bridge:**

- Area “K” -between Goat Island and Rose Island
- Area “M” -in the vicinity of R “12” west of Rose Island
- Area “O” -in the vicinity of Potter Cove (just north of west end of the Newport Pell Bridge)

### **North of the Newport Pell Bridge:**

- Area “R” -in the vicinity of 200° for 0.5 NM from Halfway Rock
- Area “T” -in the vicinity of Hope Island off Quonset Point
- Area “U” -in the vicinity of 035° M for 1.0 NM from Hope Island (*not shown in Addendum C*)

**6.2** Once on station, the Race Committee may announce the lat/long positions of the signal boat and starting mark over the circle VHF channel. Failure to make such an announcement, or the timing of any announcement, will not be grounds for a boat to request redress. This changes RRS 62.1(a).

## **7 CHECK-IN AND RETIREMENT**

**7.1 Check in on Land:** Each boat shall check in at the NYYC Sailing Center at Harbour Court during the registration times so designated in the NOR.

**7.2 Check in on Water:**

- Around-the-Island Race: Prior to their course signal, each boat shall check in with the Race Committee check-in vessel displaying flag “L” that will be anchored to leeward and outside of the starboard end of the starting box by sailing or motoring by the stern of the check-in vessel and announcing her sail number.
- Two-Day Series: Prior to their course signal each day, each boat shall check in with the Race Committee signal vessel by sailing or motoring by the stern of the signal vessel and announcing her sail number.

**7.3** Boats retiring shall inform the Race Committee on their circle VHF channel or by calling the Sailing Office on (401) 845-9633.

## **8 COURSES AND MARKS**

The courses and marks for the Annual Regatta are described in the following SI Addenda:

Courses using Government Marks	SI Addendum A
Drop Mark Courses	SI Addendum B

## **9 THE START**

**9.1** The intended order of starts for the Blue Circle sailing in the Around-the-Island Race on Friday, June 14, will be included in the Race Committee’s announcement on VHF Channel 72 at 0900.

**9.2** A boat that does not start within 10 minutes after her starting signal will be scored Did Not Start without a hearing. This changes RRS A5.1 and A5.2.

**9.3** For the White, Green and Red Circle: The starting line will be between a staff displaying an orange flag on the Race Committee signal vessel and either a staff displaying an orange flag on the port-end Race Committee vessel or the course side of the port-end starting mark as described in the relevant SI Addendum.

- 9.4 For the Blue Circle: The starting line will be between a staff displaying an orange flag on the Race Committee signal vessel and either a staff displaying an orange flag on the port-end Race Committee vessel or a staff displaying an orange flag on the port-end starting mark as described in the relevant SI Addendum.
- 9.5 Boats whose warning signal has not been made shall keep clear of the starting area from the time of the course signals for the first start in the sequence until the warning signal for their class.
- 9.6 Around-the-Island Race: The Race Committee will delineate a starting box by placing two or more buoys to leeward of the starting line to form a starting box area between these buoys and the starting line. Boats shall remain outside the starting box from the time of the course signals for the first start until the warning signal for their class.
- 9.7 The Race Committee will endeavor to hail boats observed to be OCS at the start over their respective circle VHF channel. For the IC37 class, the Race Committee will attempt to notify OCS boats by radio on the VHF channel and/or digitally via the Velocitek unit. Failure of the **Velocitek System**, failure to hear a hail, delay in hailing or the order in which hails are given will not be grounds for a boat to request redress. This changes RRS 62.1(a).

## 10 CHANGE OF COURSE

See Addendum B – Drop Mark Courses.

## 11 THE FINISH

The finishing line will be between a staff displaying a blue flag on the Race Committee signal vessel and the course side of the finishing mark as described in the relevant SI Addendum.

## 12 PENALTY SYSTEM

- 12.1 For the Around-the-Island Race on Friday, June 14, US Sailing Prescription Appendix V rule V1 shall apply for all boats. Penalties specified by class rules do not apply.
- 12.2 For the Two-Day Series, for all classes except the IC37 and 52 Super Series classes, US Sailing Prescription Appendix V rule V1 shall apply.
- 12.3 For the 12 Metre class and any other class with 10 or more entrants US Sailing Prescription Appendix V rule V2 shall also apply.
- 12.4 For the IC37 class in the Two-Day Series, the first sentence of RRS 44.1 is changed so that a boat may take a One-Turn Penalty when she may have broken one or more rules of Part 2 in an incident while *racing*.
- 12.5 For the 52 Super Series class there will be umpired racing so umpires will be active on the Blue Circle. Where this affects other classes, the following applies:  
If the umpires observe a protest (with a red flag) between a boat racing under appendix UF (52 Super Series) and one that is not, they will use the following signals to help boats take appropriate action:
- (a) A green and white flag with one long sound means ‘The umpires saw the incident and believe that no rule was broken’.
  - (b) A red flag with one long sound means ‘‘The umpires saw the incident and believe that one or more boats have broken a rule’. The umpires will hail or signal each boat identified.
  - (c) A ‘‘J’’ flag with one long sound means ‘The umpires did not observe the incident or are unable to make a decision’.
- Penalties signaled by the umpires, apply only to boats racing under appendix UF (52 Super Series).
  - Boats may still proceed with a protest after an umpire signal, providing they comply with all the requirements of RRS 61.1.
- 12.6 The Protest Committee may impose suitable penalties, other than disqualification, for breaches of the World Sailing Offshore Special Regulations, USSER or other non-Part 2 rules. This changes RRS 64.2.
- 12.7 A boat other than a boat competing in the 52 Super Series class that has taken a penalty while racing shall complete an online penalty acknowledgement form, located on the regatta webpage, no later than the end of protest time limit.

### **13 TIME LIMIT**

- 13.1** For courses designated in accordance with SI A2.4, SI A2.5, SI A2.6, or SI A2.7, the Time Limit for the first boat to sail the course and *finish* is five hours and the Finishing Window is 120 minutes. Boats failing to finish within the finishing Window, and not subsequently retiring, penalized or given redress, will be scored Time Limit Expired (TLE) without a hearing. A boat scored TLE shall be scored points as described in SI 15.4. This changes RRS 35, A5.1, A5.2 and A10.
- 13.2** For courses designated in accordance with Addendum B for all fleets except the 52 Super Series, the Time Limit for the first boat to sail the course and *finish* is three hours and the Finishing Window is 45 minutes. Boats failing to finish within the finishing Window, and not subsequently retiring, penalized or given redress, will be scored Time Limit Expired (TLE) without a hearing. A boat scored TLE shall be scored points as described in SI 15.4. This changes RRS 35, A5.1, A5.2 and A10.
- 13.3** For the 52 Super Series: For courses designated in accordance with Addendum B, the Time Limit for the first boat to sail the course and *finish* is 90 minutes and the Finishing Window is 15 minutes. Boats failing to finish within the finishing Window, and not subsequently retiring, penalized or given redress, will be scored Time Limit Expired (TLE) without a hearing. A boat scored TLE shall be scored points as described in SI 15.4. This changes RRS 35, A5.1, A5.2 and A10.

### **14 PROTESTS AND REQUESTS FOR REDRESS**

- 14.1** The intent to protest and the identity of the boat being protested shall be communicated to the Race Committee at the first reasonable opportunity after the boat intending to protest finishes until acknowledged by the Race Committee. This changes RRS 61.1(a).
- 14.2** Written protests or requests for redress shall be submitted through the online hearing request form, located on the regatta webpage, as soon as possible, but not later than one hour after the Race Committee signal vessel for that circle has docked. The time limit for filing a request for hearing will be posted on the online Official Notice Board.
- 14.3** Protests will be heard as soon as possible. The Protest Committee will attempt to hear protests in the order of receipt.
- 14.4** Breaches of SIs 5.4, 7, 9.5, 9.6 and 18 will not be grounds for a protest by a boat. This changes RRS 60.1(a).
- 14.5** The penalty for a breach of SI 9.5 or 9.6 shall be a minimum of two points. This changes RRS 64.2.

### **15 SCORING**

- 15.1** The Around-the-Island Race will be scored separately from the Two-Day Series.
- 15.2** In the Two-Day Series, a boat's series score will be the total of her race scores. This changes RRS A2 and IC37 CR H3.1.
- 15.3** One race is required to be completed to constitute a series.
- 15.4** A boat scored Time Limited Expired (TLE) by the Race Committee shall be scored points for the finishing place two more than the points scored by the last boat that finished within the Finishing Window stated in SI13.1 or SI13.2. This changes RRS 35, A5.1, A5.2 and A10.
- 15.5** Teams competing for team trophies will be scored in accordance with the notice of race.
- 15.6** For scoring purposes, the distance used (as needed) will be that as calculated by the Race Committee.
- 15.7** ORC Classes: The decision on wind ranges and course classification (WL or All Purpose) will be at the sole discretion of the Race Committee and shall not be grounds for a boat to request redress. This changes RRS 62.1(a).

### **16 PRIZES**

- 16.1** Prizes will be awarded as described in the notice of race.
- 16.2** Additional prizes may be awarded at the discretion of the OA.

### **17 LIABILITY AND MEDIA WAIVER**

- 17.1** As a condition of entry, each owner, skipper and participating crew member shall submit, prior to racing, an online liability waiver/media release. The links to this form can be found on the Annual Regatta [website](#).

**17.2** Media Waiver - Competitors and crew members on the competing boats grant, at no cost, the New York Yacht Club Regatta Association, Inc., New York Yacht Club, and any official sponsors of the regatta, the absolute right and permission to use their name, voice, image, likeness, biographical material as well as representations of the boats in any media worldwide (being television, print and internet media), including video footage, for the sole purposes of advertising, promoting, reporting and disseminating information regarding the Annual Regatta and the participants in the Annual Regatta.

**17.3** Competitors participate in the regatta entirely at their own risk. See RRS 3, Decision to Race. The Organizing Authority, New York Yacht Club and any official sponsors will not accept any liability for material damage or personal injury or death sustained in conjunction with or prior to, during or after the regatta. Attention is also drawn to RRS 46 and USSER 1.2, Responsibility.

## **18 SAFETY REGULATIONS**

**18.1** Restricted Channels: Competitors are reminded that Narragansett Bay and its approaches are considered restricted channels for commercial traffic and other vessels restricted in their ability to maneuver. Competitors must comply with the government right-of-way rules when in proximity to commercial or privileged marine traffic.

**18.2** Newport Security Zone: In the event there is racing in Narragansett Bay, competitors should be aware of heightened security around the Navy base in Newport just to the north of the Newport Pell Bridge. The area may be defined by a series of white buoys marking the Newport Security Zone along the coast of the Naval Facilities from Coasters Harbor to the breakwater at the north end of Coddington Cove and the line defined by the buoys shall rank as an obstruction. Yachts shall not enter this area. A Navy patrol boat monitors the area and vessels navigating in the Exclusionary Zone may face action by Coast Guard and Naval authorities.

**18.3** Additional Restricted Areas: There may be additional restricted areas due to Navy activity, shipping or fishing operations may be described in an amendment to the sailing instructions.

## **19 NOTES**

**19.1** The Annual Regatta website can be found at <https://nyyc.org/170th-annual-regatta>.

**19.2** For further information please contact:

New York Yacht Club, Harbour Court  
5 Halidon Avenue  
Newport, RI 02840

Tel: 401-845-9633

Fax: 401-846-3303

Email: [sailingoffice@nyyc.org](mailto:sailingoffice@nyyc.org)

# SAILING INSTRUCTIONS

## **ADDENDUM A – COURSES USING GOVERNMENT MARKS**

### **A1 ORDER OF START**

The intended order of starts will be announced at course signals on the circle VHF Channel. Classes may or may not start in numerical order. The Race Committee may combine two or more classes into one start by displaying multiple class flags at the warning signal. The Race Committee will endeavor to announce the next class(es) to start on the circle VHF Channel.

### **A2 COURSES**

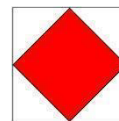
- A2.1** All boats shall pass through the center span only for any course passing under the Jamestown Verrazano Bridge and/or the Newport Pell Bridge, in which case the center span bridge piers define a gate mark.
- A2.2** Government marks shall have no required side except when designated as a rounding mark.
- A2.3** No later than the warning signal, the Race Committee will display on a board the course to be sailed. The Race Committee will endeavor to announce the designated courses over the circle VHF channel. Failure to make such an announcement shall not be grounds for a boat to request redress. This changes RRS 62.1(a).
- A2.4 COURSE 1** – If number one is displayed, the course will be clockwise around Conanicut Island:
- Special Mark “E”, if used (see SI A3.6)
  - G “11” Q G Bell to starboard
  - GR “NR” Bell 650 yards SW of Beavertail Point to starboard
  - The center span of the Jamestown Verrazano Bridge
  - G “5” 1,250 yards NW of Conanicut Point to starboard
  - R “2” Fl R 4 Sec Bell 900 yards NE of Conanicut Point to starboard
  - The center span of the Newport Pell Bridge
  - Pass to the west of R “12” off Rose Island
  - Finish off Fort Adams between a staff displaying a blue flag on a Race Committee vessel and the finishing mark. The finishing line will be located approximately 0.4 NM north of the Fl R 6 sec Horn “2” on the northern point of Fort Adams.
- A2.5 COURSE 2** – If number two is displayed, the course will be counter-clockwise around Conanicut Island:
- Special Mark “E”, if used (see SI A3.6)
  - Pass to the west of R “12” off Rose Island
  - The center span of the Newport Pell Bridge
  - R “2” Fl R 4 Sec Bell 900 yards NE of Conanicut Point to port
  - G “5” 1,250 yards NW of Conanicut Point to port
  - The center span of the Jamestown Verrazano Bridge
  - GR “NR” Bell 650 yards SW of Beavertail Point to port
  - G “11” Q G Bell to port
  - Finish off Fort Adams between a staff displaying a blue flag on a Race Committee vessel and the finishing mark. The finishing line will be located approximately 0.4 NM north of the Fl R 6 sec Horn “2” on the northern point of Fort Adams.
- A2.6 COURSE 3** – If number three is displayed, the course will be designated using buoys as described in SI Addendum A3. The Race Committee will list the marks in the order to be rounded and the required side to leave each mark. The course will be:
- Start
  - Round the marks in the designated order leaving each mark to the designated side
  - Finish between a staff displaying the blue flag on the Race Committee vessel and the nearby finishing mark. Note that the intended finishing line will be set at the starting location of the Race Committee signal vessel.
- A2.7 COURSE 4** – If number four is displayed, the course will be designated using buoys as described in SI Addendum A3. The Race Committee will list the marks in the order to be rounded and the required side to leave each mark. The course will be:
- Start
  - Round the marks in the designated order leaving each mark to the designated side



- Finish between a staff displaying the blue flag on a Race Committee vessel and the nearby finishing mark. The intended finishing line will be a separate line set approximately .2 to starboard of the anchored Race Committee signal vessel. The Race Committee signal vessel will remain anchored at the location of the start.

**A2.8** The Race Committee vessel at the finish may or may not be the same vessel that started the race.

**A2.9** If at the start, Flag “F” is displayed on a separate pole, the finishing line will be between a staff displaying a blue flag on a Race Committee vessel and the nearby finishing mark in the vicinity of 0.65 NM at a bearing of 355° from the Fl R 6 sec Horn “2” on the northern point of Fort Adams. In the absence of the Race Committee vessel and/or finishing mark, the finishing line will be on a bearing of 120° M from G “3” Gong southeast of Rose Island.



### A3 MARKS

**A3.1** The starting mark will be a green inflatable mark.

**A3.2** The finishing mark will be a pink inflatable mark.

**A3.3** Special Marks “E” and “L”, if used, will be the same as the original mark colors for each circle as described in SI B2.1.

**A3.4** If used, Special NYYC Temporary Inflatable Race Marks 16, 17, O2 and N2, as designated on the current South Bay Race Chart, will be orange tetrahedron buoys.

**A3.5** All buoys listed on the current *South Bay Race Chart* provided at registration may be used in Course 3 and Course 4. In addition, the marks listed in SI Addendum A3.6, A3.7, A3.8 and A3.9 are additional rounding marks that might be used.

#### **A3.6** Special Mark “E”

- The Race Committee may add a new first Special Mark “E” to any course described in SI Addendum A2.
- If Special Mark “E” is used for Course 1 or Course 2, the Race Committee will display on a board the letter “E” next to the letter “S” (round Special Mark “E” to STARBOARD) or next to the letter “P” (round Special Mark “E” to PORT).
- If Special Mark “E” is used for Course 3 or Course 4, the Race Committee will list Special Mark “E” along with the designated rounding side as the first mark on the course board as described in SI A2.6.
- The magnetic bearing and distance (in nautical miles to the nearest tenth) to Special Mark “E” will be posted on a board on the Race Committee signal vessel.

#### **A3.7** Special Mark “L”

- The Race Committee may set Special Mark “L” approximately 0.1 NM to windward of the start line.
- If Special Mark “L” is used, it will be listed as a mark as described in SI Addendum A2.6 and A2.7.

### **A3.8** GOVERNMENT MARKS AND ISLANDS

See charts 13205, 13218, 13223, 13226 and 13224 for more detail.

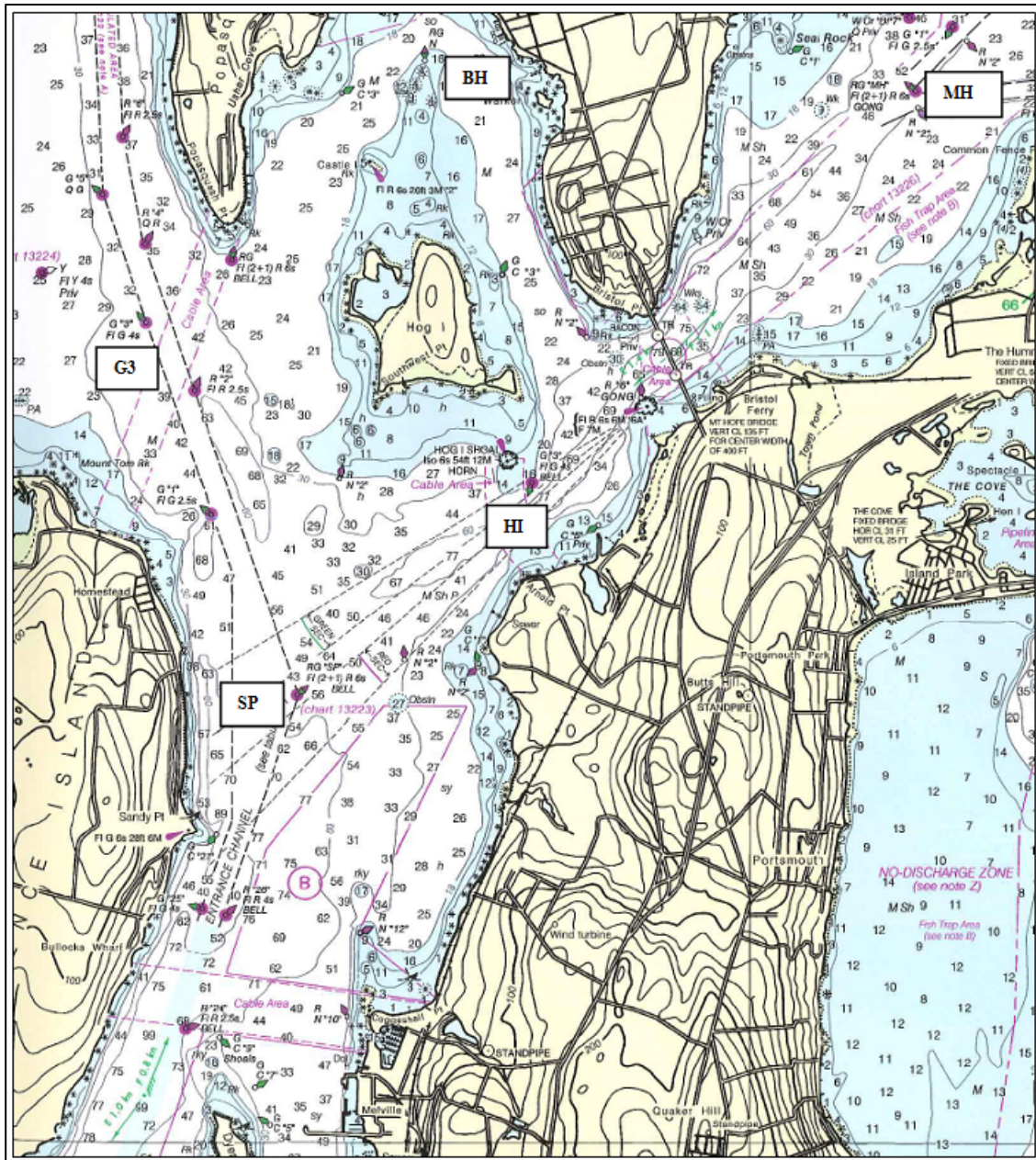
<u>Description</u>	<u>Approx. location</u>
1 Gould Island	41° 32.00’ N; 071° 20.67’ W (center of island)
3 Hope I (east of Quonset) including R “2” at the southwest end and G C “1” at the northeast end	
4 Conanicut Island	
5 RW “NB” Mo(A) WHIS	41° 23.00’ N; 071° 23.36’ W
7 R “2” Fl R 4s WHIS south of Point Judith	41° 18.46’ N; 071° 28.35’ W
1BI G “1 BI” Fl G 4s BELL north of Block I	41° 15.49’ N; 071° 34.55’ W
M Block Island including:	
R “4” Fl R 6s WHIS off Southwest Pt	41° 08.73’ N; 071° 37.35’ W
Black Rock Pt. Buoy 2	41° 08.42’ N; 071° 35.74’ W
U Buzzards Light Tower Fl 2.5s 67ft 17M Horn	41° 23.82’ N, 071° 02.08’ W
PR Prudence Island including R “8” northwest of Patience Island and RG N at the northern end	
SP RG “SP” Fl (2+1) R 6s BELL	41° 36.92’ N; 071° 17.59’ W
G3 G “3” Fl G 4s (approx. 0.5 NM sw of Popasquash Neck)	41° 38.53’ N; 071° 18.46’ W
MH RGR “MH” Fl (2 + 1) R 6s GONG in Mt. Hope Bay	41° 39.54’ N; 071° 14.04’ W
BH RGR N "Middle Ground Buoy" approx. 0.8 NM n of Hog I	41° 39.68’ N; 071° 16.87’ W



HI G "3" Fl G 4s BELL approx. 0.4 NM south southeast of Hog I 41° 37.79' N; 071° 16.29' W

DI Dutch Island

41° 30.19' N; 071° 24.04' W (center of island)



Marks near Prudence Island, Bristol and Mt. Hope Bay

# SAILING INSTRUCTIONS

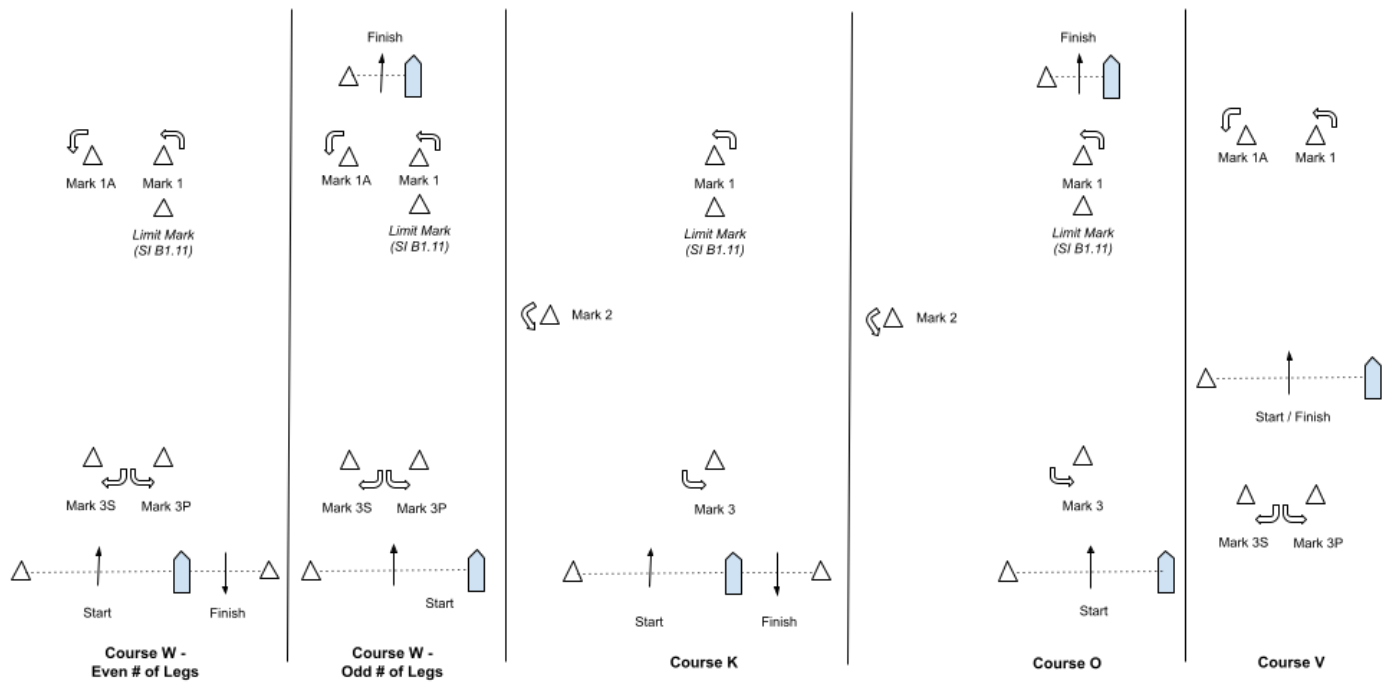
## ADDENDUM B – DROP MARK RACES

### B1 COURSES FOR DROP MARK RACES

**B1.1** The Race Committee signal vessel will signal the course on a course board. Course designations are as follows:

- W2 Start – 1 – 1A – Finish (downwind)
- W3 Start – 1 – 1A – Gate (3S/3P) – Finish (upwind)
- W4 Start – 1 – 1A – Gate (3S/3P) – 1 – 1A – Finish (downwind)
- W5 Start – 1 – 1A – Gate (3S/3P) – 1 – 1A – Gate (3S/3P) – Finish (upwind)
- W6 Start – 1 – 1A – Gate (3S/3P) – 1 – 1A – Gate (3S/3P) – 1 – 1A – Finish (downwind)
- K Start – 1 – 2 – 3 – 1 – Finish (downwind)
- O Start – 1 – 2 – 3 – 1 – 3 – Finish (upwind)
- V Start – 1 – 1A – Gate (3S/3P) – 1 – 1A – Gate (3S/3P) – Finish (upwind)

**B1.2** Course Diagrams:



**B1.3** Course “W” is a Windward/Leeward course with a windward offset mark. A board indicating the number of LEGS to be raced will be shown next to the letter “W”. The distance between the windward mark and the offset mark shall not count as a leg for the purposes of indicating the number of legs.

**B1.4** Course “O” is a Triangle/Windward/Leeward/Windward course.

**B1.5** Course “K” is a Triangle/Windward/Leeward course.

**B1.6** Course “V” is a Windward/Leeward course with a windward offset mark and a start/finish line in the middle.

**B1.7** The leeward mark for Courses “W”, “O” and “K” will be an inflatable mark(s) set approximately 0.10 NM to windward of the starting line. A gate mark 3S/3P may be used for Course “W”.

**B1.8** The leeward mark for Course “V” will be inflatable marks set to leeward of the starting line. A gate mark 3S/3P may be used for Course “V”.

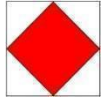
**B1.7** The course designations, distance and bearing to the windward mark will be displayed on a board.

**B1.8** Marks, including the windward offset mark, shall be rounded in order and always left to port, except that a gate, when used, shall be rounded as described in Definitions, *Sail the Course*. In the event a gate is not set, the single leeward mark shall be rounded to port.

**B1.9** There will be a windward offset mark adjacent to the windward mark for courses W2, W3, W4, W5, W6 and V.

**B1.10 Special Finish Mark “F”**

If flag “F” is displayed on a separate pole, the finishing line for that class will be between a staff displaying a blue flag on a Race Committee boat and the nearby finishing mark in the vicinity of 0.65 NM at a bearing of 355° from the Fl R 6 sec Horn “2” on the northern point of Fort Adams. In the absence of the Race Committee boat and/or finishing mark, the finishing line will be on a bearing of 120° from G “3” Gong southeast of Rose Island. This changes SI Addendum B1.1.



**B1.11 Limit Mark**

- a) The Race Committee may set an inflatable limit mark approximately 6-8 boat lengths to leeward of the windward mark.
- b) The limit mark shall be left to port on both the upwind and the downwind legs.
- c) In the event of a change of course to the windward mark after the first windward mark rounding in that race, the limit mark will not be set.
- d) For courses W3 and W5, on the final leg heading to the windward finish the limit mark is not a mark of the course.
- e) The location of the limit mark or the failure of the Race Committee to set the limit mark shall not be grounds for a boat to request redress. This changes RRS 62.1(a).
- f) The Race Committee will display flag “Third Substitute” on a separate pole, at or before the warning signal, if the limit mark will be set.



**B1.12 Long Windward Mark:**

For all “W” courses, the Race Committee may set both a long windward mark and offset, and a short windward mark and offset. The distance to the long windward mark and the distance to the short windward mark will be displayed on a course board. If flag “D” is displayed on a separate pole, at or before the warning signal, that class will use the long windward mark for each weather leg in that race. If flag “D” is not displayed, that class will use the short windward mark for each weather leg in that race.



**B2 MARKS FOR DROP MARK COURSES**

**B2.1** Marks will be inflatable shapes as follows:

Circle	Original marks	Starting	Finishing	Limit Mark (SI B1.11)	Change marks
WHITE	Orange	Green	Pink	Pink	Yellow
BLUE	Yellow	Green	Pink	White	Orange
RED	Yellow	Green	Pink		Orange
GREEN	Yellow	Green	Pink		Orange

**B2.2** The finish mark for Course “V” will be the same color as the start mark.

**B3 COURSE CHANGE**

**B3.1** To change the next leg of the course, the Race Committee will lay a new mark (or move the finishing line) and remove the original mark as soon as practicable. When in a subsequent change a new mark is replaced, it will be replaced by an original mark.

**B3.2** The Race Committee may change the course by up to five degrees in bearing and/or 0.2 nm in length without a signal or change of mark color. This changes RRS 33.

**B3.2** In addition to the requirements in RRS 33, the Race Committee will attempt to announce any course change on their respective circle VHF channel. Failure to make such an announcement shall not be grounds for a boat to request redress. This changes RRS 62.1(a).

**B4 THE FINISH**

**B4.1** The finishing line will be between a staff displaying a blue flag on a Race Committee vessel and the nearby finishing mark.

- a) For Course “W” with an odd number of legs and Course “O”, the finish line will be located approximately 0.1 NM to windward of the windward mark.
  - i) On a “W” course with an odd number of legs that has a long windward mark in use, the finish line will be to windward of the long windward mark.



- b) For Course “W” with an even number of legs and Course “K”, the finish line will be located approximately 0.1 NM to leeward of the leeward mark or gate and the finishing mark will be on the opposite side of the Race Committee signal vessel from the starting mark. See diagrams in SI Addendum B1.2.

**B4.2** The Race Committee vessel at the finish may or may not be the same vessel that started the race.

## SAILING INSTRUCTIONS

### ADDENDUM C – NYYC PRIMARY RACE AREAS

