



**Verve Distance Race
Chicago Yacht Club
Monroe Harbor, Chicago, IL USA
August 13, 2016**



SAILING INSTRUCTIONS

1 RULES

- 1.1 The regatta will be governed by the rules as defined in *The Racing Rules of Sailing*.
- 1.2 The following US Sailing prescriptions will not apply: 60, 63.2, and 63.4.
- 1.3 Appendices T1, T2 and T5 will apply.
- 1.4 The Offshore Rating Rule will apply for handicap classes.

2 NOTICES TO COMPETITORS

Notices to competitors will be posted on the official notice boards located at the Chicago Yacht Club Monroe Station. Information may also be available on the Chicago Yacht Club website at www.chicagoyachtclub.org/verveoffshore.

3 CHANGES TO SAILING INSTRUCTIONS

Any change to the sailing instructions will be posted before 0730 on the day it will take effect, except that any change to the schedule of races will be posted by 2000 on the day before it will take effect.

4 SIGNALS MADE ASHORE

- 4.1 Signals made ashore will be displayed from the main flagpole located northeast of the center of the Monroe Station clubhouse.
- 4.2 When flag AP is displayed ashore, '1 minute' is replaced with 'not less than 75 minutes' in the race signal AP.

5 SCHEDULE OF RACES

There will be one race on Saturday, August 13, 2016. The first warning will be at 1025.

6 CLASS FLAGS

Class breaks and initial starting order will be announced no later than registration.

<u>Class</u>	<u>Flag</u>
ORR1	Code Flag 1
ORR2	Code Flag 2

7 STARTING AREA

The diagram contained in Addendum B provides the approximate starting location. The starting area is located approximately 2.5 nautical miles at a heading of 090° from Chicago Harbor Light (LL 19960). The approximate coordinates are 41° 53.4' North and 87° 32.0 West.

8 THE COURSES

- 8.1 The grid in Addendum A show the courses and the diagram in Addendum B illustrates each course, the order in which marks are to be rounded, and the side on which each mark is to be left.
- 8.2 The race committee may assign a different course for each class.
- 8.3 No later than the warning signal for each class, the race committee signal boat will display the course letter on a course board for the respective class.

9 MARKS

- 9.1 Marks will be government navigation aids or pumping station cribs, with the exception of a orange tetrahedron near Clemson shoal.
- 9.2 The starting mark and finishing mark will be a Orange inflatable mark.

10 AREAS THAT ARE OBSTRUCTIONS

The following area is designated an obstruction:

The area around the active pumping stations (cribs) and the marks placed around them by the Coast Guard. Boats shall not sail between the marks or between the marks and crib.

11 THE START

- 11.1 The starting line will be between a staff displaying an orange flag on the signal boat at the starboard end and the course side of the port-end starting mark. The approximate coordinates are 41° 53.4 North and 87° 32.0 West.
- 11.2 Boats whose warning signal has not been made shall avoid the starting area during the starting sequence for other races. The starting area is defined as an area extending approximately 150 feet to windward and to leeward of the starting line and 150 feet to either end.
- 11.3 A boat starting later than twenty (20) minutes after her starting signal will be scored Did Not Start without a hearing. This changes rule A4 and rule A5.
- 11.4 If any part of a boat's hull, crew or equipment is on the course side of the starting line at her starting signal and she is identified, the race committee will attempt to broadcast her sail number on the designated hailing channel. Errors or omissions in courtesy broadcasts or hails are not grounds for a request for redress. This changes rule 62.1(a).
- 11.5 The race committee may combine classes for a start.

12 CHANGE OF THE NEXT LEG OF THE COURSE

Race committee may change the next leg(s) of the course at any mark to a single leg to the finish line for the purpose of shortening the race. Such change will be signalled with code flag C and repetitive sounds. This changes rule 33.

13 THE FINISH

The finish line will be between a staff displaying a blue flag on a race committee boat and the course side of the finishing mark to be left to port. Due to the possibility of classes finishing from different directions. The approximate coordinates are 41° 53.4 North and 87° 32.0 West, the same approximate location as the starting area.

14 TIME LIMITS AND TARGET TIMES

The time limit will be 1630. If there is a postponement before the first warning signal, the time limit will be extended by the duration of that postponement, but not to exceed two hours.

15 PROTESTS AND REQUESTS FOR REDRESS

- 15.1 Protests and requests for redress or reopening shall be delivered to the protest desk at Monroe Station within the appropriate time limit.
- 15.2 A boat's protest time limit is 60 minutes from the docking time of the race committee boat that finished her.

16 SCORING

- 16.1 Boats entered under ORR will be scored using that rule. All other boats will be scored without handicap, except for the 8 Mile Buoy Trophy.
- 16.2 ORR scoring shall be in accordance with the ORR handicap certificate in effect on August 8. ORR scoring will be calculated using time-on-time (TOT) scoring utilizing the ORR offshore all purpose rating for classes on each designated course.

17 SAFETY REGULATIONS AND WITHDRAWALS

A boat that retires from the race shall notify the race committee as soon as practicable. A boat may notify the race committee using the designated VHF hailing channel.

18 ADVERTISING

Boats may be required to display advertising, including removable adhesive stickers, chosen and supplied by the organizing authority.

19 SUPPORT BOATS

Team leaders, coaches and other support personnel shall stay outside areas where boats are racing from the time of the preparatory signal for the first class to start until all boats have finished or retired or the race committee signals a postponement, general recall or abandonment.

20 RADIO COMMUNICATION

Except in an emergency, a boat shall neither make radio transmissions while racing nor receive radio communications not available to all boats. This restriction also applies to all communication technologies.

21 COURTESY BROADCASTS

- 21.1 The courtesy VHF broadcast channel will be CH 79.
- 21.2 A boat shall not request redress for errors or omissions in courtesy broadcasts. This changes rule 62.1(a).

22 PRIZES

Prizes will be awarded as described in the notice of race.

23 DISCLAIMER OF LIABILITY

Competitors participate in the regatta entirely at their own risk. See rule 4, Decision to Race. The organizing authority will not accept any liability for material damage or personal injury or death sustained in conjunction with or prior to, during, or after the regatta.

24 INSURANCE

Each participating boat shall be insured with valid third-party liability insurance with a minimum cover of \$300,000 per event or the equivalent.

ADDENDUM A

VERVE DISTANCE RACE

	Light List #	Rounding/ Crossing Direction	Approx. Distance (nm)	Approximate Location
Course A GREEN				
Start				41-53.4N 87-32.0W
Wilson Ave Intake Crib Light	20135	Mark to port	5.29	41-58.0N 87-35.5W
Finish		East to west	5.29	41-53.4N 87-32.0W
			10.57	

Course B TEAL				
Start				41-53.4N 87-32.0W
<i>A gate bounded by; Clemson Shoal Lighted Bell(CLSB) Buoy 4 and an Orange Mark placed about 100 yards east of CSLB buoy 4</i>	19910		5.0	41-48.4N 87-32.0W
68th Street Crib Light	19870	Mark to port	1.2	41-47.2N 87-31.9W
<i>A gate bounded by; Clemson Shoal Lighted Bell(CLSB) Buoy 4 and an Orange Mark placed about 100 yards east of CSLB buoy 4</i>	19910		1.2	41-48.4N 87-32.0W
Finish		East to west	5.0	41-53.4N 87-32.0W
			12.4	

Course C YELLOW				
Start				41-53.4N 87-32.0W
Wilson Ave Intake Crib Light	20135	Mark to port	5.29	41-58.0N 87-35.5W
<i>A gate bounded by; Clemson Shoal Lighted Bell(CLSB) Buoy 4 and an Orange Mark placed about 100 yards east of CSLB buoy 4</i>	19910		9.95	41-48.4N 87-32.0W
68th Street Crib Light	19870	Mark to starboard	1.2	41-47.2N 87-31.9W
<i>A gate bounded by; Clemson Shoal Lighted Bell(CLSB) Buoy 4 and an Orange Mark placed about 100 yards east of CSLB buoy 4</i>	19910		1.2	41-48.4N 87-32.0W
Finish		East to west	5.0	41-53.4N 87-32.0W
			22.72	

Course D PINK				
Start				41-53.4N 87-32.0W
Clemson Shoal Lighted Bell Buoy 4	19910	Mark to starboard	6.2	41-48.4N 87-32.0W
68th Street Crib Light	19870	Mark to port	1.2	41-47.2N 87-31.9W
Clemson Shoal Lighted Bell Buoy 4	19910	Mark to port	1.3	41-48.4N 87-32.0W
Wilson Ave Intake Crib Light	20135	Mark to port	10.0	41-58.0N 87-35.5W
Finish		East to west	5.2	41-53.4N 87-32.0W
			22.8	

ADDENDUM A: Page 2

VERVE DISTANCE RACE

	Light List #	Rounding/ Crossing Direction	Approx. Distance (nm)	Approximate Location
Course E PURPLE				
Start				41-53.4N 87-32.0W
Grossepoint Outer Lighted Bell Buoy 4	20255	Mark to port	15.5	42-08.2N 87-35.3W
Wilmette Wreck Lighted Bell Buoy WR2	20250	Mark to port	4.07	42-05.7N 87-39.0W
Finish		East to west	13.36	41-53.4N 87-32.0W
			32.92	

Course F BLUE				
Start				41-53.4N 87-32.0W
Indiana Shoal Buoy 2 (Red Nun)	19785	Mark to starboard	9.64	41-46.2N 87-23.4W
68th Street Crib Light	19870	Mark to starboard	6.42	41-47.2N 87-31.9W
Clemson Shoal Lighted Bell Buoy 4	19910	Mark to port	2.35	41-48.4N 87-32.0W
Wilson Ave Intake Crib Light	20135	Mark to port	13.42	41-58.0N 87-35.5W
Finish		East to west	5.2	41-53.4N 87-32.0W
			35.29	

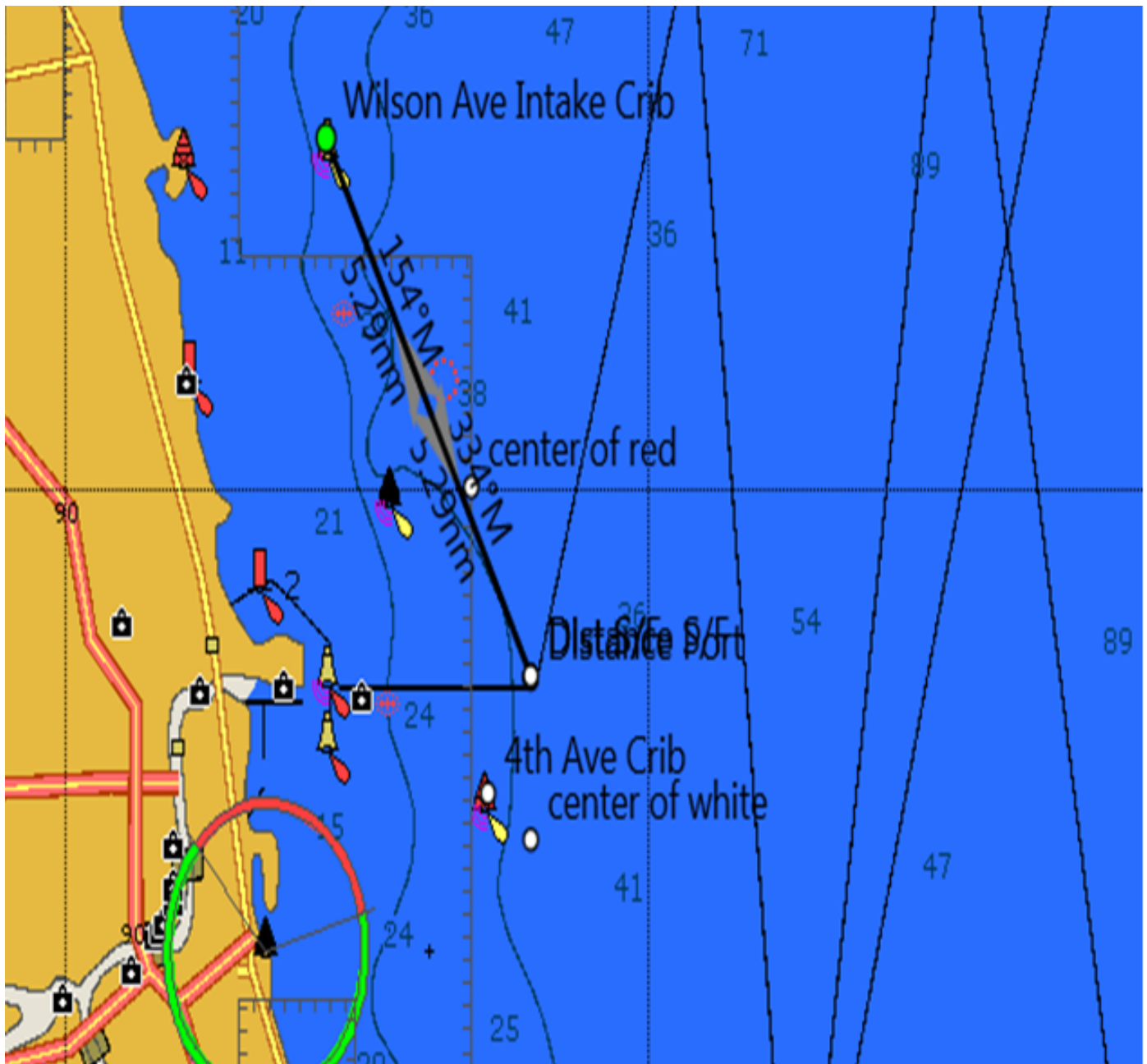
Course G RED				
Start				41-53.4N 87-32.0W
Indiana Shoal Lighted Gong Buoy 4	19625	Mark to starboard	9.64	41-43.4N 87-19.5W
Calumet East Shoal Lighted Buoy 4	19795	Mark to starboard	4.2	41-44.0N 87-28.2W
Finish		East to west	9.82	41-53.4N 87-32.0W
			23.66	

ADDENDUM B: Page 1

VERVE DISTANCE RACE

Course A GREEN

Mark	Latitude	Longitude	Bearing	Range nm
Dist S/F	41 53.400n	087 32.000w		
Wilson Ave Intake Crib P	41 58.000n	087 35.500w	334°	5.29
Dist S/F	41 53.400n	087 32.000w	154°	5.29
				10.57

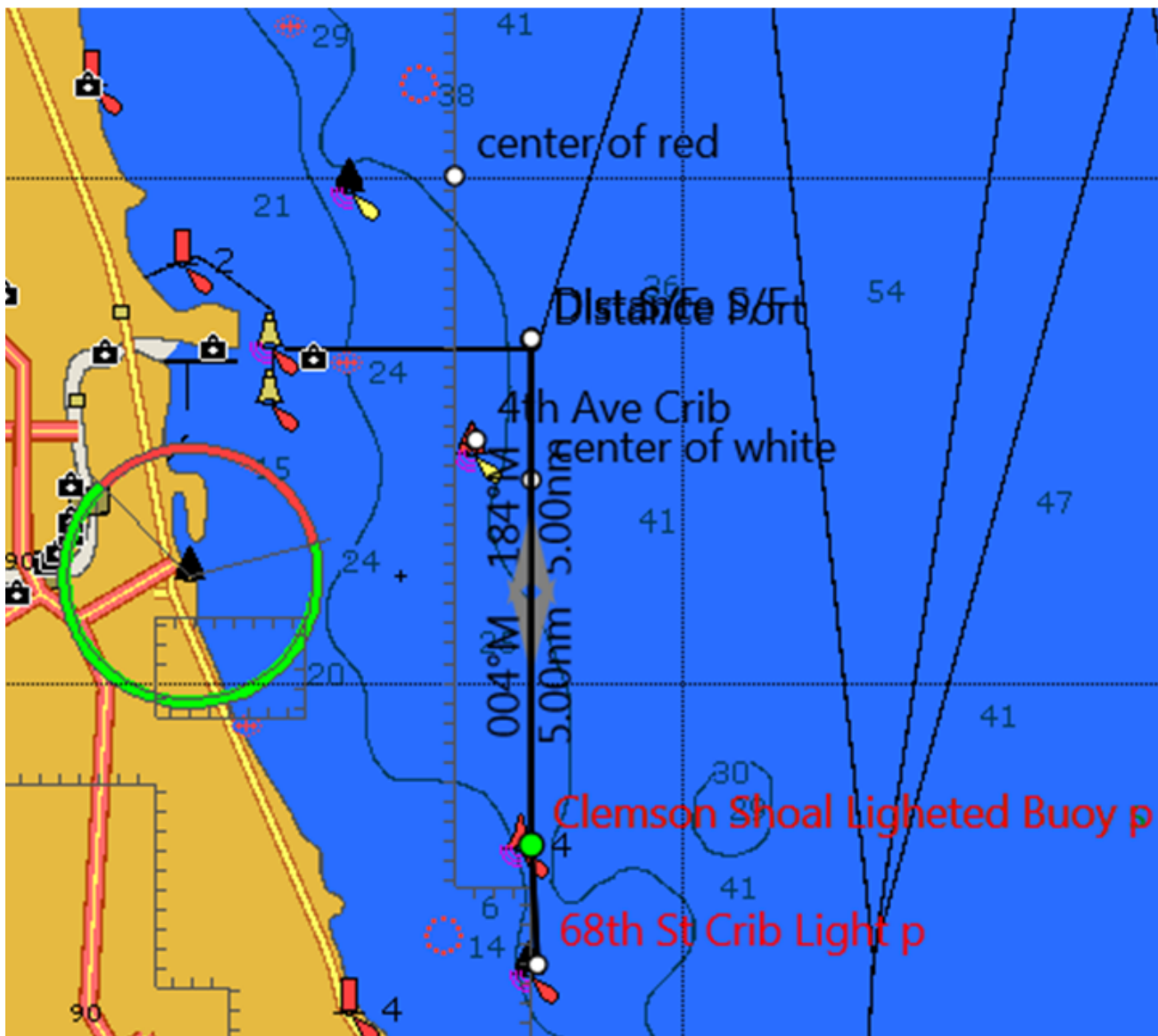


ADDENDUM B: Page 2

VERVE DISTANCE RACE

Course B TEAL

Mark		Latitude	Longitude	Bearing	Range nm
Dist S/F		41 53.400n	087 32.000w		
Clemson Shoal Lighted Buoy S	S	41 48.400n	087 32.000w	184°	5.00
68th St Crib Light	P	41 47.200n	087 31.900w	180°	1.20
Clemson Shoal Lighted Buoy P	P	41 48.400n	087 32.000w	000°	1.20
Dist S/F		41 53.400n	087 32.000w	004°	5.00
					12.40



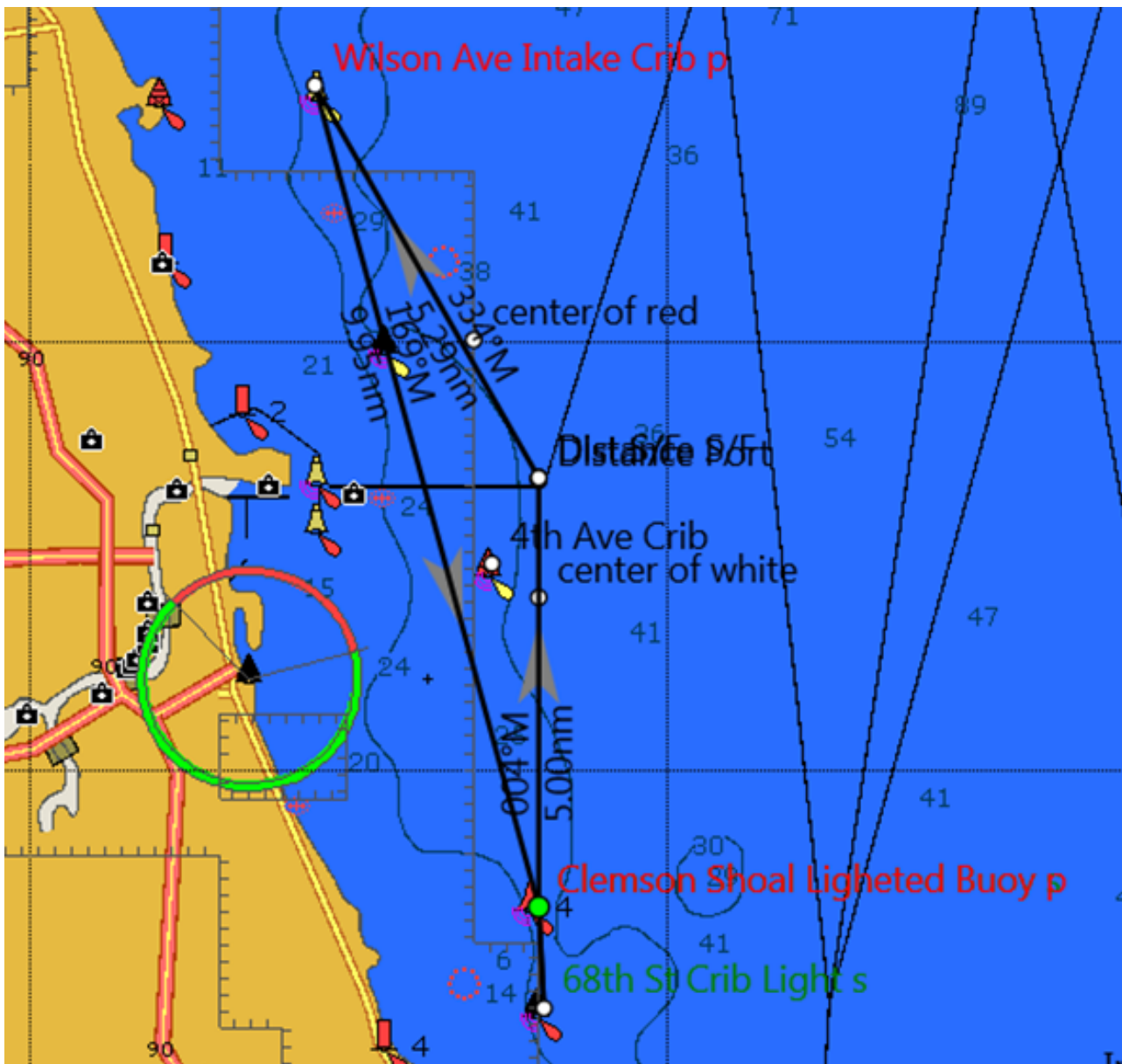
ADDENDUM B: Page 3

VERVE DISTANCE RACE

Course C YELLOW

Mark		Latitude	Longitude	Bearing	Range nm
Dist S/F		41 53.400n	087 32.000w		
Wilson Ave Intake Crib	P	41 58.000n	087 35.500w	334°	5.29
Clemson Shoal Lighted Buoy	S	41 48.400n	087 32.000w	169°	9.95
68th St Crib Light	S	41 47.200n	087 31.900w	180°	1.20
Clemson Shoal Lighted Buoy	P	41 48.400n	087 32.000w	000°	1.20
Dist S/F		41 53.400n	087 32.000w	004°	5.00

22.64



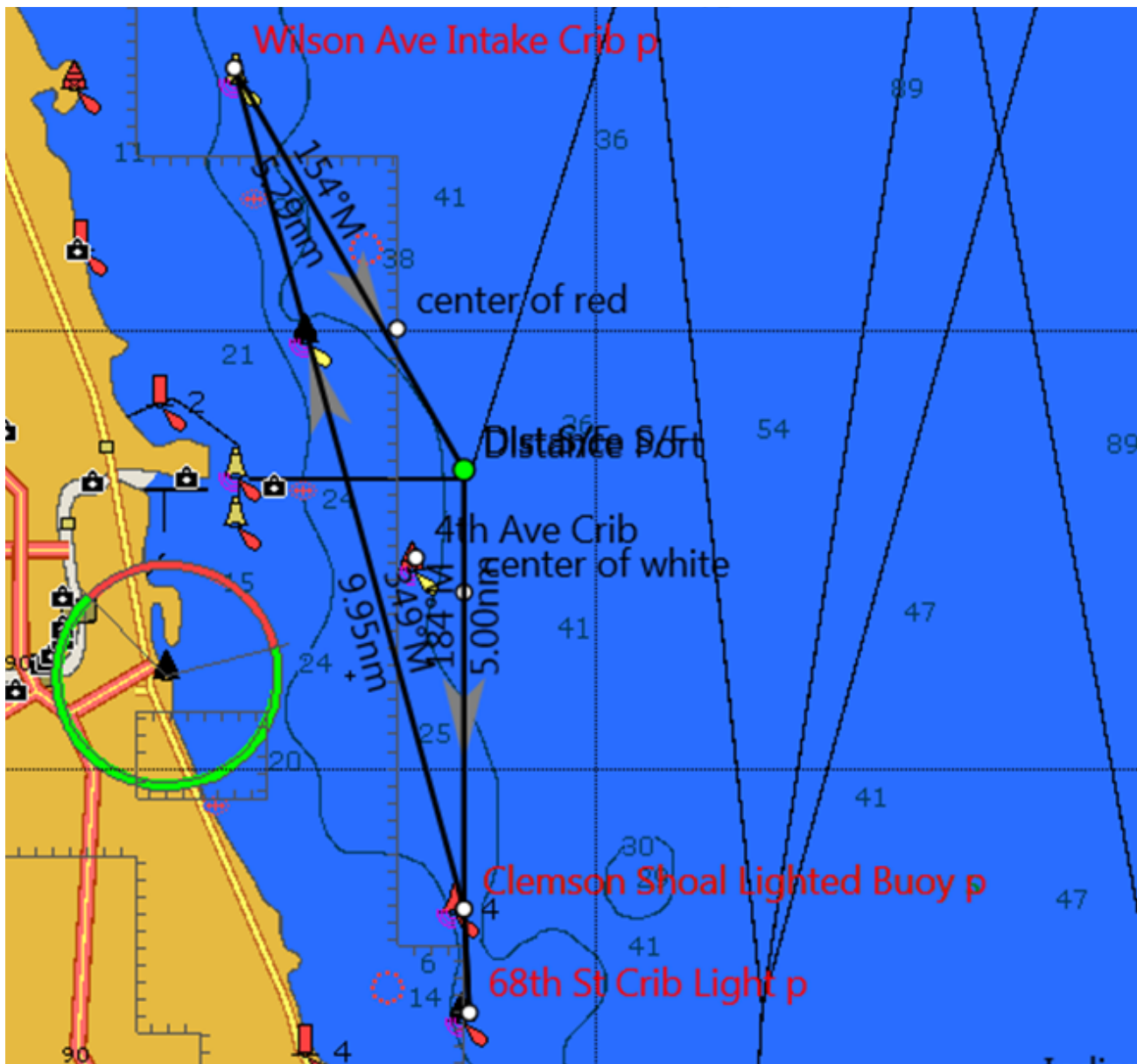
ADDENDUM B: Page 4

VERVE DISTANCE RACE

Course D PINK

Mark		Latitude	Longitude	Bearing	Range nm
Dist S/F		41 53.400n	087 32.000w		
Clemson Shoal Lighted Buoy S	S	41 48.400n	087 32.000w	184°	5.00
68th St Crib Light	P	41 47.200n	087 31.900w	180°	1.20
Clemson Shoal Lighted Buoy P	P	41 48.400n	087 32.000w	000°	1.20
Wilson Ave Intake Crib	P	41 58.000n	087 35.500w	349°	9.95
Dist S/F		41 53.400n	087 32.000w	154°	5.29

22.64

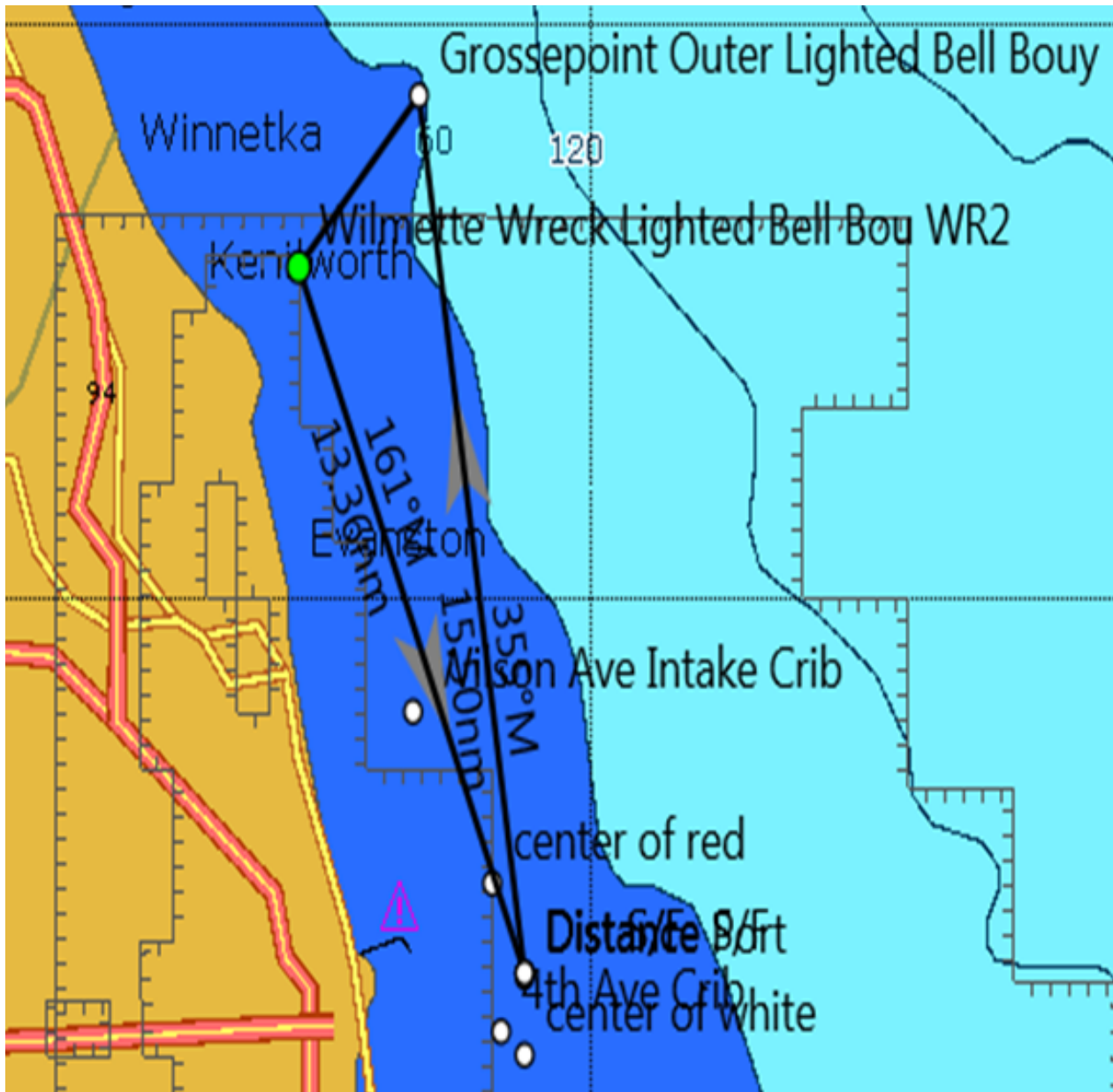


ADDENDUM B: Page 5

VERVE DISTANCE RACE

Course E PURPLE

Mark		Latitude	Longitude	Bearing	Range nm
Dist S/F		41 53.400n	087 32.000w		
Grossepoint Outer Lighted Bell Bouy	P	42 08.700n	087 35.300w	355°	15.50
Wilmette Wreck Lighted Bell Bou WR2	P	42 05.700n	087 39.000w	226°	4.07
Dist S/F		41 53.400n	087 32.000w	161°	13.36
					32.92

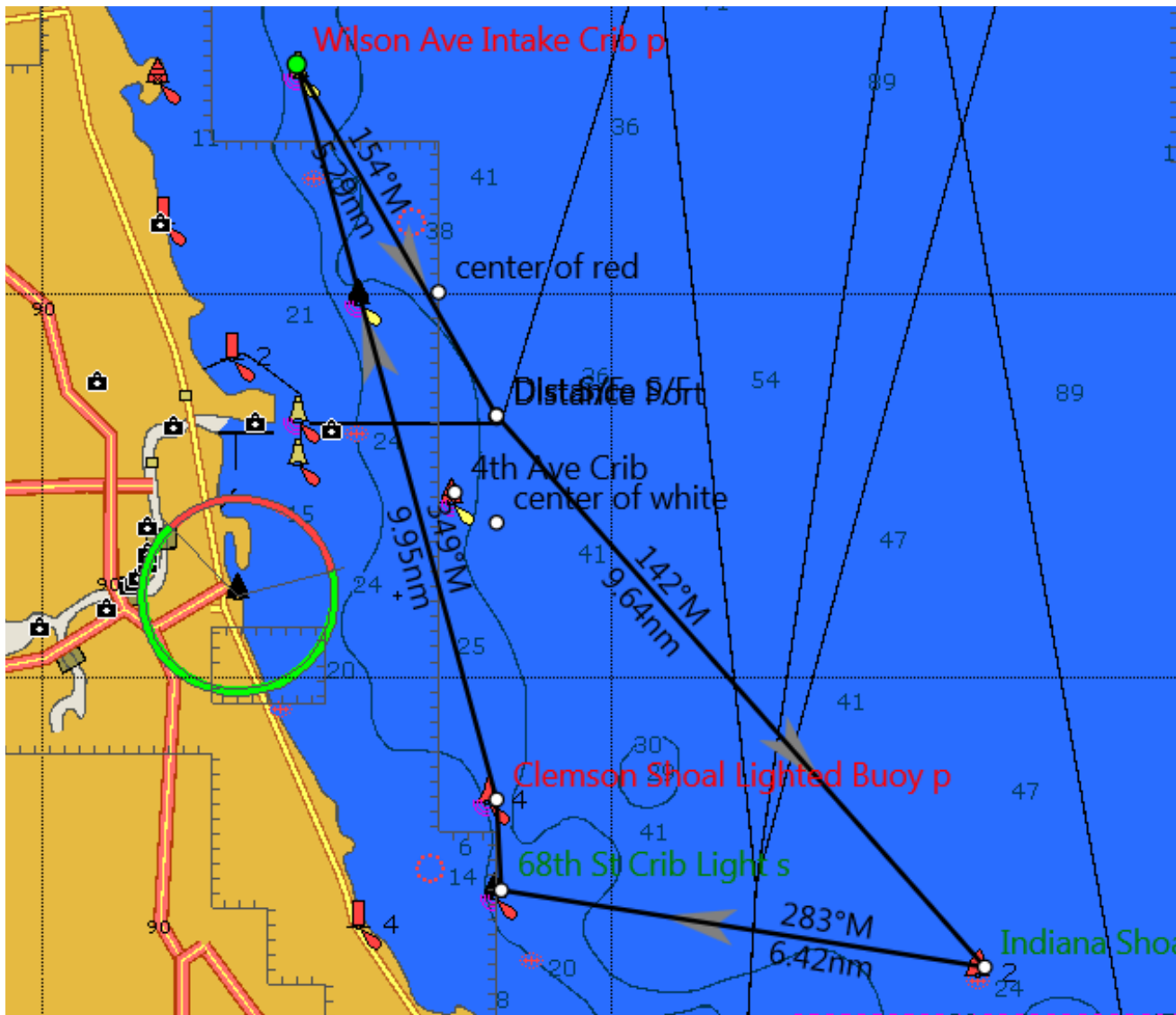


ADDENDUM B: Page 6

VERVE DISTANCE RACE

Course F BLUE

Mark		Latitude	Longitude	Bearing	Range nm
Dist S/F		41 53.400n	087 32.000w		
Indiana Shoal Buoy	S	41 46.200n	087 23.400w	142°	9.64
68th St Crib Light	S	41 47.200n	087 31.900w	283°	6.42
Clemson Shoal Lighted Buoy	P	41 48.400n	087 32.000w	000°	1.20
Wilson Ave Intake Crib	P	41 58.000n	087 35.500w	349°	9.95
Dist S/F		41 53.400n	087 32.000w	154°	5.29
					32.49



ADDENDUM B: Page 7

VERVE DISTANCE RACE

Course G RED

Mark	Latitude	Longitude	Bearing	Range nm
Dist S/F	41 53.400n	087 32.000w		
Indiana Shoal Buoy	S 41 46.200n	087 23.400w	142°	9.64
Calumet East Shoal Lighted Bouy 4 S	41 44.000n	087 28.200w	242°	4.20
Dist S/F	41 53.400n	087 32.000w	347°	9.82
				23.66

