



## Etchells Southern Area Championships

6<sup>th</sup> & 7<sup>th</sup> July 2024

### SAILING INSTRUCTIONS

Royal Thames Yacht Club

Run from Cowes

---

The Organizing Authority (OA) is the Royal Thames Yacht Club in conjunction with the UK Etchells Class.

The notation [NP] in a rule means that a boat may not protest another boat for breaking that rule. This changes RRS 60.1 (a).

#### 1. RULES

- 1.1 The event will be governed by the rules as defined in The Racing Rules of Sailing (RRS).
- 1.2 The International Etchells Class Code of Conduct will apply– details can be found via this link: <https://etchells.org/news/article/ieca-code-of-conduct>
- 1.3 Boats will be provided with bow number stickers by the UK Etchells class. They shall be placed 52cm aft of the bow, 6cm from the shearline and 6cm apart. Single digit numbers (e.g.'2') shall display the leading zero (e.g.'02'). These stickers shall be applied prior to the first race of the series. It is the responsibility of competitors to ensure that these are properly in place before racing each day.
- 1.4 The RYA Racing Charter is in effect and competitors are expected to sail in compliance with it. The Charter can be found at the front of the RYA edition of the Racing Rules of Sailing (the yellow pages after the definitions), or on the RYA website at [www.rya.org.uk/racingrules](http://www.rya.org.uk/racingrules).

#### 2. CHANGES TO SAILING INSTRUCTIONS

Any change to the sailing instructions will be posted before 0900 on the day it will take effect on the Official Notice Board, except that any changes to the schedule of races will be posted by 2000 on the day before it will take effect.

#### 3. COMMUNICATION WITH COMPETITORS

- 3.1. Notices to competitors will be posted on the official notice board located at: [https://www.yachtscoring.com/event\\_documents.cfm?eid=16509](https://www.yachtscoring.com/event_documents.cfm?eid=16509)
- 3.2. The race committee will use the event Whatsapp group to alert competitors when there has been a posting. The link to this group can be found at the end of these Sailing Instructions.
- 3.3. Competitors briefing will take place at the Cowes Etchells fleet base in Cowes Yacht Haven on Saturday 6<sup>th</sup> July at 09.15.
- 3.4. The RTYC event race office is located in Shepards Wharf Marina.
- 3.5. On the water, the race committee intends to monitor and communicate with competitors on VHF radio channel 06.
- 3.6. The following communications may be made by the race committee on VHF radio: location of race committee vessel, alternate preparatory signals, courses, postponement, abandonment, starting signals, recalls.

- 3.7. [DP] From the first warning signal until the end of the last race of the day, except in an emergency, a boat shall not make voice or data transmissions and shall not receive voice or data communication that is not available to all boats.
- 4. CODE OF CONDUCT**
- [DP] Competitors and support persons shall comply with reasonable requests from Race Officials.
- 5. SIGNALS MADE ASHORE**
- No signals will be displayed ashore. The race committee will use the RTYC Southern Area Championships event Whatsapp group to keep competitors informed whilst ashore.
- 6. SCHEDULE OF RACES**
- Six races are scheduled, with a maximum of four (4) races per day may be sailed.
- 7. CLASS FLAG**
- The class flag will be International Code Flag Echo.
- 8. RACING AREA**
- The location of the start line will be announced via the event Whatsapp group and repeated on vhf channel 06 by 09.45 each race day.
- 9. COURSES**
- 9.1. The diagrams in SI Addendum A show the course(s), including the approximate angles between legs, the order in which marks are to be passed, and the side on which each mark is to be rounded.
- 9.2. No later than the warning signal, the race committee signal vessel will display the course signal and the approximate compass bearing of the first leg.
- 9.3. If either gate mark 4s or 4p is missing, boats shall round the remaining gate mark to port.
- 10. MARKS**
- 10.1. Marks 1, 1a, 4s and 4p will be orange inflatable buoys.
- 10.2. The start marks will be between the Race Committee Boat- Gemini Breeze (10m blue hull and white top sided motor boat) displaying an Orange Flag and either a dan buoy with a staff displaying an orange flag or an anchored RIB with a staff displaying an orange flag.
- 10.3. The finish marks will be between the Race Committee Boat displaying a Blue flag and a dan buoy displaying a Blue flag.
- 11. OBSTRUCTIONS**
- The Moving Prohibited Zone (MPZ), as detailed by the Associated British Ports of Southampton – Notice to Mariners No 08 of 2022, is designated as an obstruction. More information can be found by following this link: [2022 No 08 Port of Southampton - Precautionary Area \(Thorn Channel\).pdf \(southamptonvts.co.uk\)](https://www.southamptonvts.co.uk/2022-No-08-Port-of-Southampton-Precautionary-Area-(Thorn-Channel).pdf)
- 12. THE START**
- 12.1. Races will be started using RRS 26 with the warning signal made five (5) minutes before the starting signal.
- 12.2. To alert boats that a race will begin soon, the orange starting line flag will be displayed with multiple sound signals not less than five (5) minutes before a warning signal is displayed.
- 12.3. Flags P or U preparatory signals will be used initially and then if required, this will be escalated to a Black Flag preparatory signal.
- 12.4. The starting line is defined as being between a staff displaying an orange flag on the committee vessel at the starboard-end and a staff displaying an orange flag on a Dan bouy or on a rib at the port end.
- 12.5. In addition to RRS 29.1, if any part of a boat's hull is on the course side of the starting line at her starting signal and she is identified, the race committee will attempt to hail her bow or sail number on VHF radio. Failure to

hail her number, failure of her to hear such a hail, or the order in which boats are hailed will not be grounds for a redress request. This changes RRS 62.1(a).

- 12.6. A boat that does not start within 4 minutes after her starting signal will be scored Did Not Start without a hearing. This changes RRS A5.1 and A5.2.

### **13. CHANGE OF THE NEXT LET OF THE COURSE**

- 13.1. To change the next leg of the course, the race committee will move the original mark or the finishing line to a new position.
- 13.2. The race committee may change a leg of the course by up to ten (10) degrees in bearing and/or 100m in length without a signal. This changes RRS 33 and Race Signals.

### **14. THE FINISH**

- 14.1 The finishing line is defined as being between a staff displaying a blue flag on the committee vessel at the starboard-end and a staff displaying an orange flag on either a Dan bouy or on a rib at the port end.

### **15. PENALTY SYSTEM**

- 15.1. A boat may take a One-Turn Penalty when she may have broken a rule of Part 2 or rule 31 while racing. However, when a boat may have broken a rule of Part 2 while in the zone around a mark other than a starting mark, her penalty shall be a Two-Turns Penalty. This changes RRS 44.1.
- 15.2. In RRS 44.2 insert after the first sentence: "However, if Mark 1a (spreader mark) is set, a boat may take a penalty for an incident in the zone around Mark 1 or on the leg between Mark 1 and Mark 1a, as soon as possible after leaving the zone around Mark 1a.

### **16. TARGET TIMES AND TIME LIMITS**

- 16.1. The target time for each race is 45 minutes. Failure to meet this time shall not be grounds for redress. This changes RRS 62.1 (a).
- 16.2. The time limit for each for race will be 90 minutes. If no boat has finished within the race time limited, the race will be abandoned. This shall not be grounds for redress. This changes 62.1 (a).
- 16.3. Finish Window: The time for boats to finish after the first boat sails the course and finishes is 15 minutes.
- 16.4. All boats still racing more than 15 minutes after the first boats finishes, shall be awarded the points for the place behind the last yacht, which has finished the race within the time limit. This changes RRS A5.

### **17. HEARING REQUESTS**

- 17.1. The protest time limit is 60 minutes after the last boat finishes the last race of the day or the race committee signals no more racing today, whichever is later. The time will be posted on the online official notice board.
- 17.2. Hearing forms are available from the race office at Shepards Wharf Marina.
- 17.3. Notices will be posted no later than 30 minutes after the protest time limit to inform competitors of hearings in which they are parties or named as witnesses. Hearings will be held virtually via Microsoft Teams.

### **18. SCORING**

- 18.1. One (1) race is required to constitute a series.
- 18.2. When upto 4 races have been completed, a boat's series score will be the total of her race scores. This changes NoR 14.2.
- 18.3. When 4 or more races have been completed, a boat's series score will be the total of her race scores excluding her worst score. This changes NoR 14.3.

### **19. SAFETY REGULATIONS**

- 19.1. [DP] A boat that retires from a race shall notify the race committee via VHF before leaving the course, or, when that is impossible, immediately after arrival ashore by contacting the race committee via the event WhatsApp Group.

### **20. REPLACEMENT OF CREW OR EQUIPMENT**

- 20.1. [DP] Substitution of competitors is not allowed without prior written approval of the OA.
- 20.2. [DP] Substitution of damaged or lost equipment is not allowed unless authorized in writing by the race committee. Requests for substitution shall be made to the committee at the first reasonable opportunity, which may be after the race.

**21. EQUIPMENT AND MEASUREMENT CHECKS**

A boat or equipment may be inspected at any time for compliance with the class rules, notice of race and sailing instructions.

## **22. OFFICIAL VESSELS**

- 21.1. The Race Committee signal vessel will be the M/V *Gemini Breeze* – 10m long blue hull, white top sides.
- 21.2. Mark laying vessels will be blue RTYC RIBs.

## **22. SUPPORT PERSON VESSELS**

- 22.1. The race committee would like to call special attention to RRS 37.
- 22.2. All support vessels shall carry a marine VHF radio capable of receiving and transmitting on all international channels.
- 22.3. [DP] All support vessels shall stay at least 100m outside the areas where boats are racing from the time of the first warning signal of the day until racing has concluded for the day.

## **23. TRASH DISPOSAL**

Trash may be placed on official vessels.

## **24. BERTHING**

Berthing is the responsibility of each competing boat.

## **25. HAUL-OUT RESTRICTIONS**

- 25.1. All boats shall be afloat no later than 09.00 on Saturday 6th July.
- 25.2. Boats shall not be hauled out during the event without prior written permission of the race committee.

## **26. DIVING EQUIPMENT AND PLASTIC POOLS**

- 26.1. No person shall swim or undertake any underwater or diving activities of any kind within Cowes Harbour without permission and/or a permit from the Cowes Harbour Master or the authorized marina manager.
- 26.2. Underwater breathing apparatus and plastic pools or their equivalent shall not be used around competing boats from 09.00 on morning of Saturday 8<sup>th</sup> June until the end of the event.

## **27. PRIZES**

Prizes will be awarded as soon as possible after racing on Sunday 7<sup>th</sup> July 2024 at the Cowes Etchells base in Cowes Yacht Haven to the following boats:

- a. The Royal Thames Yacht Club Decanter, a perpetual trophy, will be awarded to the winner of the regatta at the annual RTYC Prize Winners' Dinner. Invitation to follow.
- b. Prizes for the top three boats.
- c. The Corinthian Prize will be awarded to the highest placed boat sailed with a WS Category 1 crew.
- d. Prizes will be awarded to the top three place youth boats.

## **28. RISK STATEMENT**

RRS 3 states: "The responsibility for a boat's decision to participate in a race or to continue racing is hers alone." Sailing is by its nature an unpredictable sport and therefore inherently involves an element of risk. By taking part in the event, each competitor agrees and acknowledges that:

- a. They are aware of the inherent element of risk involved in the sport and accept responsibility for the exposure of themselves, their crew and their boat to such inherent risk whilst taking part in the event.
- b. They are responsible for the safety of themselves, their crew, their boat, and their other property whether afloat or ashore.
- c. They accept responsibility for any injury, damage or loss to the extent caused by their own actions or omissions.
- d. Their boat is in good order, equipped to sail in the event and they are fit to participate.
- e. The provision of a race management team, patrol boats and other officials and volunteers by the event organiser does not relieve them of their own responsibilities.
- f. The provision of patrol boat cover is limited to such assistance, particularly in extreme weather conditions, as can be practically provided in the circumstances.

- g. It is their responsibility to familiarise themselves with any risks specific to this venue or this event drawn to their attention in any rules and information produced for the venue or event and to attend any safety briefing held for the event.

**29. INSURANCE**

Each participating boat shall be insured with valid third-party liability insurance with a minimum cover of £3,000,000 per incident or the equivalent.

**# # # END # # #**

**ADDENDUM A – Event Whatsapp Group Join Link:**

<https://chat.whatsapp.com/Da2XX5ac7HkGdrLH0MV0K8>

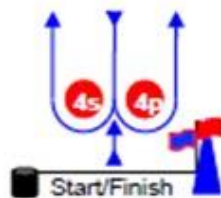
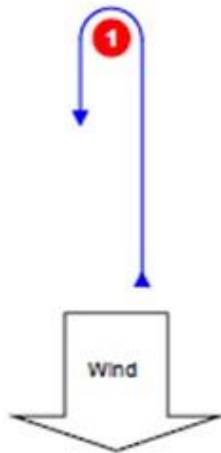
**OR Scan:**



**ADDENDUM B – COURSES**

## Course Illustrations – Windward Leeward

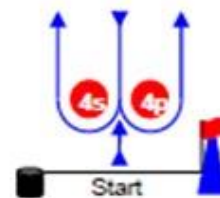
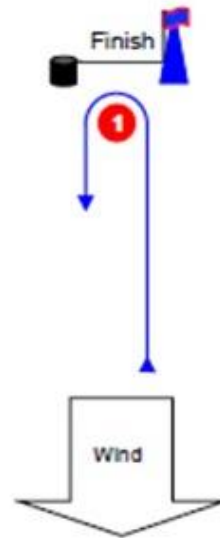
### L



#### Course: Leeward finish

| Signal | Mark Rounding Order                                    |
|--------|--|
| L2     | Start – 1 – 4s/4p – 1 – Finish                         |
| L3     | Start – 1 – 4s/4p – 1 – 4s/4p – 1 – Finish             |
| L4     | Start – 1 – 4s/4p – 1 – 4s/4p – 1 – 4s/4p – 1 – Finish |

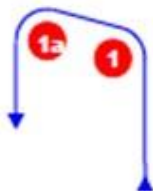
### W



#### Course: Windward Finish

| Signal | Mark Rounding Order                                |
|--------|--|
| W2     | Start – 1 – 4s/4p – Finish                         |
| W3     | Start – 1 – 4s/4p – 1 – 4s/4p – Finish             |
| W4     | Start – 1 – 4s/4p – 1 – 4s/4p – 1 – 4s/4p – Finish |

### LA / WA



#### Course: Windward/leeward with offset mark 1a

| Signal | Mark Rounding Order  |
|--------|--|
| LA2    | Start – 1 – 1a – 4s/4p – 1 – 1a – Finish                                   |
| LA3    | Start – 1 – 1a – 4s/4p – 1 – 1a – 4s/4p – 1 – 1a – Finish                  |
| LA4    | Start – 1 – 1a – 4s/4p – 1 – 1a – 4s/4p – 1 – 1a – 4s/4p – 1 – 1a – Finish |
| WA2    | Start – 1 – 1a – 4s/4p – Finish  |
| WA3    | Start – 1 – 1a – 4s/4p – 1 – 1a – 4s/4p – Finish                           |
| WA4    | Start – 1 – 1a – 4s/4p – 1 – 1a – 4s/4p – 1 – 1a – 4s/4p – Finish          |

