



XXV TROFEO S.M. LA REINA

REGATA HOMENAJE A LA ARMADA XXXVI COPA ALMIRANTE SANCHEZ-BARCAIZTEGUI REGATA INTERNACIONAL

CLASSES ORC 0,1, ClubSwan 42

SAILING INSTRUCTIONS

The "XXV TROFEO S.M. LA REINA - Regatta Homenaje a la Armada - XXXVI Copa Almirante Sánchez-Barcaíztegui" is organised by the Real Club Náutico de Valencia (RCNV), by delegation of the Real Federación Española de Vela (RFEV), with the collaboration of the Federación de Vela de la Comunidad Valenciana (FVCV). The regatta for classes 0, 1, and ClubSwan 42 will be held from 5 to 7 July.

In all the rules governing this event [NP] denotes a rule that shall not be grounds for protest by a boat and the protest committee may refuse to hold a hearing. This changes RRS 60.1 (a).

1. RULES

- 1.1 The regatta will be governed by the rules as defined in the WORLD SAILING RACING RULES OF SAILING 2021 - 2024 as well as those listed in section 2 "Rules" of the Notice of Race and the published amendments, if applicable.
- 1.2 [NP][DP] With the exception of the organisation's official drones, the use of aerial drones on club premises is strictly prohibited (EU Implementing Regulation 2019/947 and RD 1036/2017). The use of drones in the regatta areas will be permitted when they have the appropriate authorisations and have been registered at the regatta office before 10 a.m. on the day they are to operate. Any drone that the committee sees in the air and has not presented the necessary documentation will be reported to the corresponding authorities.
- 1.3 **Special Rules:** [NP][DP]
 - (a) Boats shall not throw rubbish into the water. Shall be retained on board and may be placed in receptacles ashore (RRS 47).
 - (b) Competitors may be required to carry on board cameras, sound and positioning equipment as required by the Organising Authority.
This decision shall in no way affect the measurement certificate of boats (changes RRS rule 62.1 (a)).
 - (c) ANNEX UF applies to ClubSwan 42.

2. SPARE

3. NOTICE TO COMPETITORS & CHANGES TO THE SAILING INSTRUCTIONS

- 3.1 Notices to competitors will be posted on the Official Notice Board (ONB) on the website of the event: <https://www.trofeoreina.es/documentos.php>
- 3.2 Any change to the sailing instructions will be posted on the Official Notice Board two hours before the warning signal on the day it will take effect, except that any change to the schedule of races will be posted before 21.00 hours on the day before it will take effect. At sea, the race committee will communicate with competitors on VHF radio channel 72.
- 3.3 The Race office will be located in the building of the Offices of RCNV next to the main car park.
- 3.4 In addition to RRS 29.1 & 29.2 individual and general recalls may be communicated by radio VHF. In such case, bow numbers, sail numbers or boat names may be called out for their identification. Delay in the radio communication of these calls, or the order in which they are made, or any omission or failure in the emission or reception of these, shall not be grounds for a request for redress. (This changes RRS 62.1 (a)). This rule does not reduce, modify or exonerate each boat's responsibility to start in accordance with the RRS.

4. CODE OF CONDUCT [NP][DP]

- 4.1 Competitors and support persons shall comply with the reasonable requests of the race judges.
Competitors and support persons shall place advertising provided by the organising authority with care and diligence, following the placement instructions given by the organisers.

5. SIGNALS MADE ASHORE

- 5.1 Signals made ashore will be displayed on the Main Flag Pole (MFP)) located in front of the Social Building of the Real Club Náutico de Valencia.
The MFP will display during the days of the Event, a **FLAG OF THE REAL CLUB NAUTICO DE VALENCIA** that will identify it as such.
- 5.2 When code flag "AP" is displayed ashore, the words "1 minute" are replaced with 'not less than 60 minutes' in the race signal AP. This changes RRS Race Signals, AP

6. SCHEDULE OF RACES

- 6.1 All boats will sail up to a maximum of **SEVEN** races of which at least one must be completed to award the title of winner of the **"XXV TROFEO S.M. LA REINA - REGATA HOMAGE TO THE NAVY - XXXVI ALMIRANTE MARCIAL SÁNCHEZ-BARCAITEGUI CUP"** in each of the Classes established in accordance with the Notice of Race.

6.2 The racing schedule for ORC 0, 1 and Club Swan 42 Classes is detailed below:

DATE	HOUR	ACT
4 July (Thursday)	10.00 h to 19.00 h	Confirmation of registrations, Submission of documents
5 July (Friday)	11:00 h 11.15 h 14.00 h	Meteo Briefing Skippers Meeting Races
6 July (Saturday)	10.00 h 12.00 h	Skippers Meeting Races
7 July (Sunday)	10.00 h 12.00 h 18.00 h	Skippers Meeting Races Price Giving

6.3 The Race Committee reserves the right to change the schedule at its discretion, taking into account weather conditions or other factors.

6.4 A maximum of 3 races will be sailed per day.

6.5 On the 07/07/2024, no warning signal will be made after 15:00 hrs.

6.6 For the purposes of the start, if a Class or Group does not have a minimum of 5 boats entered, they may be grouped into another Class or Group.

7. CLASSES & CLASS FLAGS

ORC CLASS

7.1 The ORC boats entries shall be group as follows:

GROUP	CLASS FLAG	SPECIFICATIONS
0	CODE FLAG "W"	18,00 >= CDL > 13,55
1	CODE FLAG "T"	13,55 >= CDL > 11,40
ClubSwan 42	BLUE FLAG WITH LOGO OF THE CLASS	CLASS CERTIFICATE

7.2 [NP][DP] All boats class flags shall be displayed on the backstay at least 1,5 meters above deck at all times, while racing, or on the stern pulpit if the boat does not have a backstay.

8. RACING AREA.

8.1 Races will be sailed in Valencia's Waters. Annex 2 shows the location of the race course.

Bravo Area ORC Groups 0, 1 y ClubSwan 42

- 8.2 The race course is defined as the area of a polygon whose edge exceeds by 100 meters the shortest theoretical course that a boat could race.
- 8.3 The starting area is defined as the rectangle covering an area 100 metres upwind and 100 metres downwind of the starting line and 200 metres outwards from each end of the line.
- 8.4 [NP][DP] Boats sailing or crossing a non-assigned area will have to remain clearly separated from the boats competing and the official boats of that area

9. COURSE

- 9.1 Appendix 1 shows the courses, including the course signals, the order in which the marks are to be passed or rounded, and the side on which each mark is to be left.
- 9.2 No later than the warning signal the Race Committee will signal the approximate magnetic bearing and length from the race committee boat to mark W.
- 9.3 The position of the marks in the Appendix are approximate. A different distance of the leg or bearing shall not be grounds for a request for redress. Nevertheless, in the previous and to the effects of the corrected time, the marks real position will be considered when calculating the distance of the legs.
- 9.4 The leeward gate may be substituted by a single mark in this case the mark is to be left to port.
- 9.5 SHORTENED COURSES: Races may be shortened at any mark, except for the windward/leeward races, these shall have a minimum of 3 legs completed (two upwind and one downwind), excluding the leg from mark W the WO of each course. The time limit remains the same as for the original course.

10. MARKS

- 10.1 Course Marks for **Area Bravo** are as follow:
Course marks: RED inflatable.
Change of course mark: WHITE Inflatable.
- 10.2 **Starting marks:** Race committee boat at the starboard end and the staff on the pin boat or an inflatable White mark on the port end, both displaying an orange flag.
- 10.3 **Finishing marks:** A boat of the Race committee and a buoy, both displaying Blue flag.
- 10.4 A Race Committee boat signaling a change of course is a mark for the purposes of the provisions of Sailing Instruction 12.4

11. START

- 11.1 The starting line will be between the staff on the Race Committee boat at the starboard end of the line and the staff on the pin boat or an inflatable WHITE mark on the port end both staff displaying an orange flag.
- 11.2 To alert boats that a race or sequence of races will begin soon, the orange starting line flag will be displayed with one sound at least five minutes before a warning signal is made.
- 11.3 [DP] Boats whose warning signal has not been given shall keep clear of the starting area, as defined in I.R 8.3.
- 11.4 A boat starting later than four minutes after her starting signal will be scored did not start (DNS) without a hearing. This changes RRS A4 and A5.1.

12. CHANGE OF POSITION OF THE NEW MARK

- 12.1 To change the next leg of the course, the race committee will lay a new mark, or move the finish line and will remove the original ones as soon as practicable or will replace the leeward gate GS/GP.
- 12.2 When the position of the windward mark (W) is changed, the WO mark shall be replaced and Mark Wi will not be laid.
- 12.3 If, as a result of a new change of course, any mark has to be replaced, it shall be replaced by a mark of the original shape and colour.
- 12.4 Except at a gate, boats shall pass between the race committee boat signaling the change of the next leg and the nearby mark, leaving the mark to port and the race committee boat to starboard

13. THE FINISH

- 13.1 The finishing line will be as described in Appendix 1
- 13.2 The finishing line will be the line between a staff displaying a Blue flag on board a Race Committee boat and a buoy displaying a blue flag.
- 13.3 [NP][DP] When crossing the finishing line at night or in poor visibility each boat shall illuminate her sail number with a strong light and identify herself to the Race Committee by radio.

14. PENALTY SYSTEM.

- 14.1 The RRS 44.1 is changed so that the 2-turns penalty is replaced by the 1-turn penalty.
[NP][DP]Un barco que haya efectuado una penalización o, que se haya retirado conforme a las reglas 44.1 deberá rellenar un formulario de reconocimiento en la Oficina de Regatas dentro del tiempo límite para protestar.
- 14.2 APPENDIX UF applies to ClubSwan 42.

15. TIME LIMITE.

- 15.1 Classes ORC 0 and 1: The time limit for each boat is calculated in accordance with rule 205 of the RTC.

Time Limit = (1.2 * ((BEAT VMG6+RUN VMG6)/2) * M (Real length of the course)

- 15.2 Class ClubSwan42:

- 15.3 Time limits and estimated times in minutes for the first boat are as follows

T. Limit 1ª mark	T. Limit	T. limite after the 1º boat finishes	Estimate time
25 minutes	90 minutes	15 minutes	50 minutes

- 15.4 If no boat has passed Mark W within the Mark W time limit the race will be abandoned. Failure to meet the target time will not be grounds for redress. This change RRS 60.1(b).
- 15.5 Before each race, and as a reference, the time limit for each boat in ORC classes calculated according to the intended theoretical length of the course, shall be published in the TOA.

15.6 For the classes competing on corrected time, those Boats who finish after the time limit will be scored DNF, this changes RRS 35, A4 and A5.1.

16. HEARING REQUESTS

16.1 Hearing request forms will be available at the Race Office. Protests, requests for redress and requests for reopening shall be delivered there within the appropriate time limit.

16.2 Protest Time Limites are as follow:

Protest Time Limit	ORC	60 minutes after the finish of each boat in the last race of the day finishes or the Race Committee signals no more racing for the day, whichever is later
	ClubSwan 42	60 minutes after the last boat in the last race of the day finishes or the Race Committee signals no more racing for the day, whichever is later

The resulting time will be announced on the Official Notice Board (ONB).

16.3 Notices will be posted no later than 30 minutes after the end of the protest time limit, to inform competitors of hearings in which they are parties or named as witnesses. Hearings will be held in the Jury rooms nearby the Race Office at the Real Club Nàutico de Valencia.

16.4 For the purpose of RRS 64.4 (b) the authority is the RFEV Technical Officials Committee.

16.5 [NP] No measurement protests between boats will be accepted on the last day, except from the Measurement Committee.

17. SCORING, COMPENSATION & RESULTS

Scoring System

17.1 Event scoring system will be the Low Point Scoring System, as described in Appendix A4 of the RRS.

And:

(a) When fewer than 5 valid races have been completed, the total score for each boat shall be the sum of all her points.

(b) When 5 or more races have been completed, each boat's total score shall be the sum of all her points, discarding her worst score.

17.2 The system of compensation will be established in accordance with Rule 204 of the RTC.

There will be a classification for each of the established Classes or Grouping of Classes provided there is a minimum of 5 boats entered otherwise the RC may group them at its discretion.

18. SAFETY REGULATIONS [NP][DP]

18.1 Boats arriving for any reason at a point on land other than the Real Club Náutico de Valencia shall immediately inform:

Real Club Náutico de Valencia	96.367.90.11	VHF 69
Race Officer	630.921.251	VHF 72
Maritime Rescue Coordination Centre	900.202.202	VHF 10 / 16

18.2 Boats not leaving the harbour for the day's races, or not starting or retiring from a race, will inform the Race Committee as soon as possible.

If they are on the water, they shall do so through the channels indicated for each of the Groups or Classes.

18.3 Boats shall return **only** to their assigned places or mooring.

18.4 In order to facilitate search and rescue operations, any vessel requesting assistance is required to report its position and external identifying details.

18.5 All competitors will carefully observe this sailing instruction. Failure to do so may result in their being required to pay the costs of search and rescue operations.

19. CHANGES OF CREW [DP]

19.1 Changes to crew list shall be made in writing at the Race Office indicating the name and I.D. or Passport number of the substitute crew member before 10:00 hours of each day, but in case of emergency, it can be communicated at the first reasonable opportunity, and in any case, within the protest time limit.

19.2 The change in crew weight caused by any substitution of a competitor may be controlled by the Technical Committee in order to ensure that the maximum crew weight is maintained.

19.3 Requests for replacement of damaged or lost equipment shall be made to the Technical Committee at the first reasonable opportunity.

20. MEASUREMENT AND EQUIPMENT INSPECTIONS. SAIL NUMBERS

INSPECCIONES DE MEDICIÓN [NP][DP]

20.1 A boat may be checked or inspected at any time to establish its compliance with the Measurement Regulations.

On the water, a boat can be instructed by a Technical Committee measurer to proceed immediately to the measurement inspections area

20.2 Once the provisional results of the day have been published for the first time, the Technical Committee will publish on the ONB the list of boats to be inspected. The boat's representative shall come to the Principal Measurer immediately, to be assigned a measurement inspection time and place.

The boat's representative is committed to check whether his boat has been listed for measurement control.

20.3 **[NP]Protests from boat against boat, about the offset of any participating boat**, will not be admitted, except through the Technical Committee, after consultation with the entity managing the certificates (RFEV / ORC).

SAIL NUMBERS [NP][DP]

- 20.4 Boats shall register and use the sail number registered on their Valid Measurement Certificate, except with the prior written permission of the Principal Race Officer.

SAIL NUMBERS ON BOARD

- 20.5 The number of sails a boat may carry on board when racing shall be in accordance with her measurement certificate or the ClubSwan 42 Class Rules.

21. OFFICIAL BOATS IDENTIFICATION.

- 21.1 The official boats will be identified by displaying flags as follows:

Race Committee ALPHA	White flag with letter "A"
Race Committee BRAVO	White flag with letter "B"
Race Committee CHARLIE	White flag with letter "C"
Protest Committee	White flag with letter "J"
Technical Committee	White flag with letter 'M'
Media and Auxiliary	White flag with letter PRESS o MEDIA

22. SUPORT BOATS [NP][DP]

Team leaders, coaches and other support staff shall not remain in the area where boats are racing from the warning signal of the first Class to start until all boats have finished or until the Race Committee signals a postponement, general recall or abandonment.

23. HAUL-OUT RESTRICTIONS & MOORING [NP][DP]

- 23.1 Boats shall not be hauled out after 18.00h of the previous day of the first warning signal, except with and according to the terms of prior written authorization of the race committee.
- 23.2 In the event of an urgent need to haul-out, the person in charge of the boat shall make every effort to communicate by vhf, telephone or otherwise with the Race Officer and, if unsuccessful, authorization may be requested at a later date.

24. PLASTIC SCREENS [NP][DP]

Plastic pools or their equivalent shall not be used around the boats between the starting signal of the first race and the end of the race. **"XXV TROFEO S.M. LA REINA – REGATA HOMENAJE A LA ARMADA – XXXVI COPA ALMIRANTE MARCIAL SÁNCHEZ-BARCAITEGUI"**

25. RADIO COMMUNICATIONS

25.1 [DP] Except in an emergency, no boat will make or receive communications not available to all boats.

25.2 The Race Committee will use the following channels in each Area for its communications to competitors.

AREA	CANAL VHF
BRAVO Area	72 VHF
MARINERÍA	69 VHF

25.3 30 minutes before the warning signal for the 1st race of the day, the Race Committees of each Area will, if possible, broadcast a check of the channels assigned to each Area.

26. TROPHIES

26.1 The list of trophies will remain at the ONB. for the duration of the regatta.

26.2 Trophies will be awarded as specified in the Notice of Race.

26.3 The Organizing Authority will award the **Trofeo S.M. la Reina** to the overall winner provided that he/she complies with the established Award Rules. These Regulations will be published in the ONB

26.4 Failure to attend the Trophy Ceremony will result in the loss of the trophy. In addition, the Organizing Committee will not admit the registration for the next edition of those Owners who do not attend to collect their trophy.

26.5 The Real Club Náutico de Valencia will award trophies to the first classified in each of the established Classes, as foreseen in the Notice of Race, on **SUNDAY 7th July 2024**, once the final classifications have been published.

26.6 The Social Events scheduled during the test days will be published on the Official Notice Board (ONB).

27 LIABILITY

All participants in the "**XXV TROFEO S.M. LA REINA – REGATA HOMENAJE A LA ARMADA – XXXVI COPA ALMIRANTE MARCIAL SÁNCHEZ-BARCAITEGUI**" " do so at their own risk and responsibility.

The Organizing Committee and all persons or bodies involved in the organization of the event disclaim any liability whatsoever for any loss, damage, injury or inconvenience that may occur to persons or things, both on land and at sea, as a result of participation in the events covered by these sailing instructions.

Attention is drawn to the Fundamental Rule 3, DECISION TO RACE, of Part 1 of the RRS which states:

"It is the sole responsibility of a boat to decide whether to participate in a race or to continue racing."

27 LOCAL MARINE REGULATIONS

The Real Decreto 62/2008 states the conditions of maritime safety, navigation and life at sea applicable to nautical sports events.

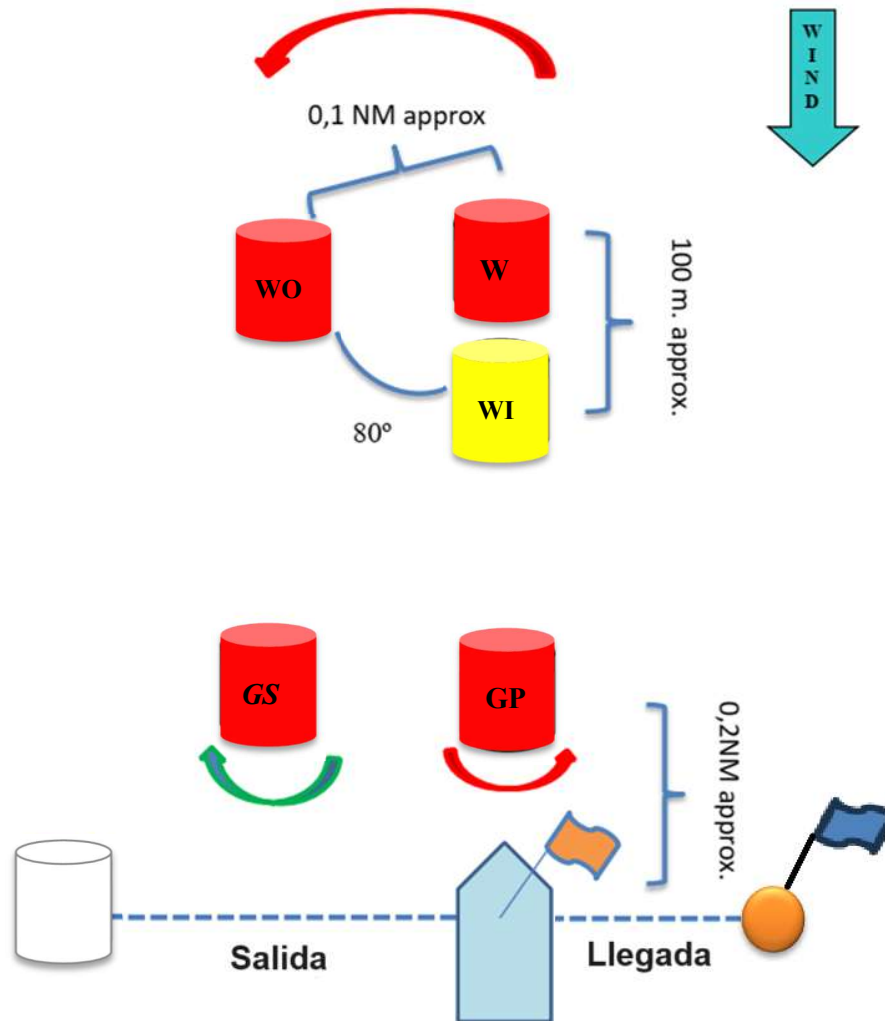
Competitors are alerted that boats can only participate if they are dispatched in accordance with the administrative regulations for navigating the waters where the race will be sailed.

Competitors must declare, with adequate prior to the beginning of the event, the insurances subscribed to participating in nautical sports events, including the risks covered and the liability limits as required in the Notice of Race

APPENDIX 1

APPENDIX 1 COURSE

COURSE : Start – WI – W – WO – WI - GP/GS– WI -W – WO – WI - Finish (Downwind).



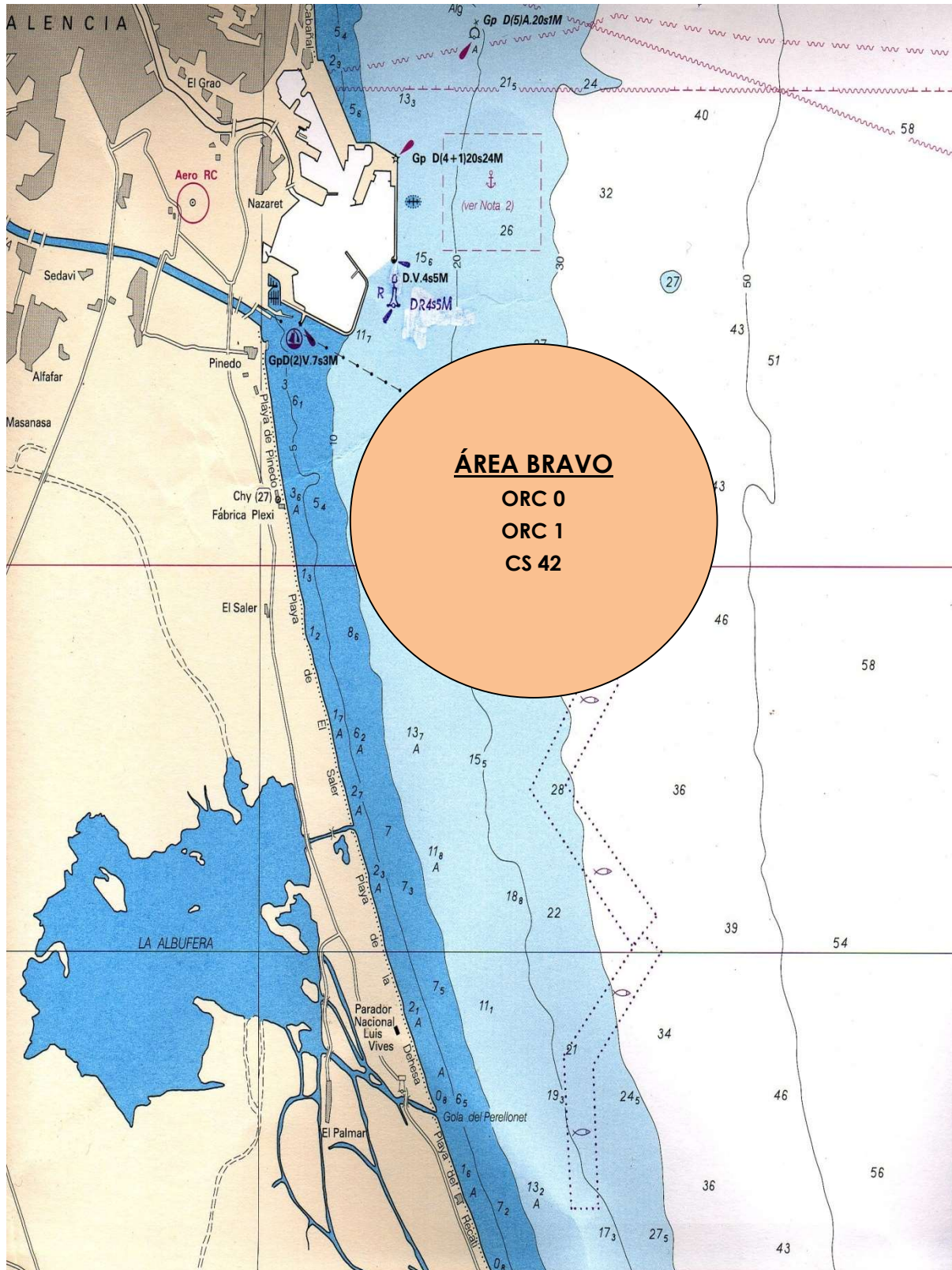
- Except at a Gate all course marks shall be left to port. When at the gate there is only one mark shall be round to port. This changes RRS 28.

Note: These drawings are schematic. The distances and mark positions are not to scale.

This information is approximate. A different distance of the leg or bearing shall not be ground for a request for redress. This changes RRS 60.1(b).

ALL COURSE MARKS WILL BE LEFT TO PORT EXCEPT GS THAT WILL BE LEFT TO STARBOARD.

APPENDIX 2



APPENDIX UF

UMPIRED FLEET RACING

Swan One Design Edition

Version: 9th March 2023

Umpired fleet races shall be sailed under The Racing Rules of Sailing as changed by this appendix. Races shall be umpired. The rule changes in UF1 have been approved by World Sailing under Regulation 28.1.5(b) on the condition that only the provided options are used. This appendix applies only when it is referred to in the Notice of Race and made available for all competitors.

UF1 CHANGES TO THE DEFINITIONS, THE RULES OF PART 1 AND 2, AND RULE 70

UF1.1 *Add to the definition Proper Course: 'A boat taking a penalty or manoeuvring to take a penalty is not sailing a proper course.'*

UF1.2 *Add new rule 7 to Part 1:*

7 LAST POINT OF CERTAINTY

The umpires will assume that the state of a boat, or her relationship to another boat, has not changed, until they are certain that it has changed.'

UF1.3 *Rule 14 is changed to:*

14 AVOIDING CONTACT

14.1 *If reasonably possible a boat shall*

- (a) avoid contact with another boat,*
- (b) not cause contact between boats, and*
- (c) not cause contact between a boat and an object that should be avoided.*

However, a right-of-way boat, or one sailing within the room or mark-room to which she is entitled, need not act to avoid contact until it is clear that the other boat is not keeping clear or giving room or mark-room.

14.2 *When there is contact between hulls, the umpires may, without a hearing, impose a scoring penalty of 1 point on a boat that was penalized in the incident. Furthermore, the umpires may also impose a scoring penalty of 0,5 points on other boats if they consider that these boats contributed to the contact. This rule also applies to bowsprit, pushpit, pulpit, stanchions, mast, boom and shrouds.*

14.3 *When there is contact that causes damage, or the umpires decide a boat has broken rule 14 and damage resulted, they may, without a hearing, impose a scoring penalty on any boat involved in the incident. The minimum penalty to be applied in such a case is 1 point.*

UF1.4 *When rule 20 applies, the following arm signals are required in addition to the hails:*

- (a) for room to tack, repeatedly and clearly pointing to windward; and*
- (b) for 'You tack', repeatedly and clearly pointing at the other boat and waving the arm to windward.*

UF1.5 *Rule 70 is deleted.*

UF1.6 *(a) The definition Mark-Room is changed to:*

Mark-Room *Room for a boat to sail her proper course to round or pass the mark on the required side.*

However, mark-room for a boat does not include room to tack unless she is overlapped inside and to windward of the boat required to give mark-room and she would be fetching the mark after her tack.

UF1.7 *Rule 17 is deleted.*

UF2 CHANGES TO OTHER RULES

UF2.1 Rule 28.2 is changed to:

28 SAILING THE COURSE

28.2. A boat may correct any errors in sailing the course, provided she has not rounded the next mark or crossed the finishing line to finish.

UF2.2 Rule 31 is changed to:

31 TOUCHING A MARK

While racing, neither the crew nor any part of a boat's hull shall touch a starting mark before starting, a mark that begins, bounds or ends the leg of the course on which she is sailing, or a finishing mark after finishing. In addition, while racing, a boat shall not touch a race committee vessel that is also a mark. This rule also applies to bowsprit, pushpit, pulpit, stanchions, boom and crew.

UF3 ON WATER PROTESTS AND PENALTIES

UF3.1 Delete RRS 44.2 and replace with:

44.2 Penalty

After getting well clear of other boats as soon after the incident as possible, a boat takes a Penalty by promptly making the required turn as follows.

a) Before starting, or when on a leg of the course to a windward mark, or a finish at Mark WI, a boat shall promptly sail clear, and as soon as reasonably possible gybe and luff to a close-hauled course.

b) On a leg of the course to a leeward mark, a gate, or the finishing line when finishing on a downwind leg, a boat shall promptly sail clear, and as soon as reasonably possible tack and bear away to a course that is more than 90 degrees from the true wind.

c) On a leg of the course to mark WO a boat shall promptly sail clear, and as soon as reasonably possible:

i) gybe and luff to a close-hauled course, or

ii) tack and bear away to a course that is more than 90 degrees from the true wind.

d) In a long-distance race, a boat shall promptly sail clear and as soon as reasonably possible do a turn, including one tack and one gybe.

However, unless the course is shortened to finish at the windward mark, penalties within the zone of the windward mark or penalties on the offset leg may be delayed and taken as soon as possible on the downwind leg.

When a boat takes the penalty at or near the finishing line, her hull shall sail completely to the course side of the line before finishing.

UF3.2 The first sentence of rule 44.1 is changed to: 'A boat may take a penalty when, in an incident while racing, she may have broken one or more of the rules of Part 2 (except rule 14 when she has caused damage or injury), rule 31 or rule 42. However, when she may have broken a rule of Part 2 and rule 31 in the same incident, she need not take the penalty for breaking rule 31'

UF3.3 On the Water Protests by Boats and Penalties

(a) While racing, a boat may protest another boat under a rule of Part 2 (except rule 14) or under rule 31 or rule 42; however, a boat may only protest under a rule of Part 2 for an incident in which she was involved. To do so she shall hail 'Protest' and conspicuously display a Y flag at the first reasonable opportunity for each. She shall remove the flag before, or at the first reasonable opportunity after a boat involved in the incident has taken a penalty voluntarily or after an umpire's decision.

- (b) A boat that protests as provided in rule UF3.3(a) is not entitled to a hearing, unless an umpire signals in accordance with UF3.5(d). Instead, a boat involved in the incident may acknowledge breaking a rule by voluntarily taking a penalty. An umpire may penalize any boat that broke a rule and was not exonerated, unless the boat took a penalty voluntarily.

UF3.4 Penalties and Protests Initiated by an Umpire

- (a) When a boat:

- (1) breaks rule 31 and does not take a penalty,
- (2) breaks rule 42,
- (3) gains an advantage despite taking a penalty,
- (4) commits a breach of sportsmanship, or
- (5) fails to comply with rule UF3.6 or to take a penalty when required to do so by an umpire,
- (6) fails to comply with rule UF2.1 (rule 28.2) an umpire shall disqualify her under rule UF3.5(c),
- (7) breaks ClubSwan 42 Class Rule C9.6 (b) and interferes with another boat,

an umpire may penalize her without a protest by another boat. The umpire may impose a penalty or more, each signalled in accordance with rule UF3.5(b), or disqualify her under rule UF3.5(c), or report the incident to the protest committee for further action. If a boat is penalized under rule UF3.4(a)(5) for not taking a penalty or taking a penalty incorrectly, the original penalty is cancelled,

- (8) breaks SI 9.1 (c)

- (b) An umpire who decides, based on his own observation or a report received from any source, that a boat may have broken a rule, other than rule UF3.6 or rule 28 or a rule listed in rule UF3.3(a), may inform the protest committee for its action under rule 60.3. However, he will not inform the protest committee of an alleged breach of rule 14 unless there is damage or injury.

UF3.5 Umpire Signals

An umpire will signal a decision as follows:

- (a) A green and white flag with one long sound means 'No penalty.'
- (b) A red flag with one long sound means 'a penalty is imposed or remains outstanding.' The umpire will hail or signal to identify each such boat.
- (c) A black flag with one long sound means 'A boat is disqualified.' The umpire will hail or signal to identify the boat disqualified.
- (d) A Blue flag with one long sound means 'The umpires do not have the facts required to make a decision.'

UF3.6 Imposed Penalties

- (a) A boat penalized under rule UF3.5(b) shall take a penalty.
- (b) A boat disqualified under rule UF3.5(c) shall promptly leave the course area.

UF4 RACE COMMITTEE ACTIONS

- UF4.1** At the finishing line, the race committee will inform the competitors about each boat's finishing place or scoring abbreviation. After this has been done, the race committee will promptly display flag B with one sound. Flag B will be displayed for at least two minutes and then removed with one sound. If the race committee changes the scoring information provided at the finishing line while flag B is displayed, it will display flag L with one sound. Flag B will continue to be displayed for at least two minutes after any changes are made.

UF5 PROTESTS; REQUESTS FOR REDRESS OR REOPENING; APPEALS; OTHER PROCEEDINGS

UF5.1 No proceedings of any kind may be taken in relation to any action or non-action by an umpire.

UF5.2 A boat is only entitled to a hearing when the umpires have signalled in accordance with UF3.5(d) or under UF5.3.

UF5.3 A boat intending to

- (a) protest another boat under a rule other than rule UF3.6 or rule 28, or a rule listed in rule UF3.3(a),
- (b) protest another boat under rule 14 if there was contact that caused damage or injury, or
- (c) request redress

Shall inform the race committee in the following way:

hail or contact the race committee by radio before or during the display of flag B.

UF5.4 The time limit defined in rule UF5.3 also applies to protests under rule UF5.9, UF5.10 and UF5.11 when such protests are permitted. The protest committee shall extend the time limit if there is good reason to do so.

UF5.5 The race committee will promptly inform the protest committee about any protests or requests for redress made under rule UF5.3.

UF5.6 The third sentence of rule 61.1(a) and all of rule 61.1(a)(2) are deleted.

Rule 62.1(a) is deleted.

UF5.7 The first three sentences of rule 64.2 are changed to: 'When the protest committee decides that a boat that is a party to a protest hearing has broken a rule, it may impose penalties other than disqualification, and may make any other scoring arrangement it decides is equitable. If a boat has broken a rule when not racing, the protest committee shall decide whether to apply any penalty to the race sailed nearest in time to that of the incident or make some other arrangement.'

UF5.8 Hearings

Except for a hearing under rule 69.2

- (a) Protests and requests for redress need not be in writing.
- (b) The protest committee may inform the protestee and schedule the hearing in any way it considers appropriate and may communicate this orally.
- (c) The protest committee may take evidence and conduct the hearing in any way it considers appropriate and may communicate its decision orally.
- (d) If the protest committee decides that a breach of a rule has had no effect on the outcome of the race, it may impose a scoring penalty of points or fraction of points or make any other arrangement it decides is fair, which may be to impose no penalty.
- (e) If the protest committee penalizes a boat in accordance with rule UF5.7 or if a standard penalty is applied, all other boats will be informed about the change of the penalized boat's score.

UF5.9 The race committee will not protest a boat.

UF5.10 The protest committee may protest a boat under rule 60.3. However, it will not protest a boat for breaking rule UF3.6 or rule 28, a rule listed in rule UF3.3(a), or rule 14 unless there is damage or injury.

UF5.11 The technical committee will only protest a boat under rule 60.4 when it decides that a boat or personal equipment does not comply with the class rules, rule 50, or the rules in the equipment regulations of the event, if such exist. In such a case, the technical committee shall protest.

UF5.12 Rule 66.2 is changed to 'A party to the hearing under this appendix may not request a reopening.'